



NITROUS PRODUCTS



BLACKOUT

Weight Specifications

Weight of Cylinder & Gas: 24Lbs.6oz.
Weight of Cylinder Empty: 14Lbs.6oz.
Weight of Gas: 10Lbs.0oz.

CONTENTS: NITROUS OXIDE MIXTURE WITH MAXIMUM 100 PPM SULFUR DIOXIDE
NOTE: FOR RACING USE ONLY

WARNING: CONTENTS UNDER PRESSURE. DO NOT PUNCTURE OR INCINERATE. THIS MIXTURE MAY DECOMPOSE WITH
HEAT AND RELEASE ENERGY. EXPOSURE OF CONTAINER TO TEMPERATURES IN EXCESS OF 130° F MAY CAUSE EXPLOSIVE
RELEASE. EXPOSURE OF LIQUID TO TEMPERATURES IN EXCESS OF 130° F MAY CAUSE EXPLOSIVE
RELEASE. THIS MIXTURE MUST BE USED BY INDIVIDUALS WHO ARE FAMILIAR WITH THIS MIXTURE AND ITS APPLICATION.
DO NOT BREATHE VAPORS. KEEP OUT OF REACH OF CHILDREN. DO NOT BREATHE VAPORS.
AVOID CONTACT AND RAPID SUFFOCATION. SULFUR DIOXIDE



HOT NEW PRODUCTS



Blackout Nitrous Systems™
FEATURED ON PAGE 03



2010 V6/V8 Camaro Nitrous Systems
PAGE 07



Liquid Filled Pressure Gauge Kits
PAGE 30



Safe Shot System & Upgrade Kit
PAGE 23



Race EFI Nitrous System
PAGE 14



Adjustable Bottle Heater
PAGE 31

Nitrous Systems

<i>Vehicle-Specific Nitrous Systems</i>	
Ford Nitrous Systems.....	04-05
GM Nitrous Systems.....	06-07
Chrysler Nitrous Systems.....	08-09
Sport Compact Nitrous Systems.....	10-11
Wet Nozzle Technology.....	12
Universal Wet Nitrous Systems.....	13-15
Direct Port Nitrous Systems.....	16-17
Perimeter Plate Technology.....	18
Perimeter Plate Nitrous Systems.....	19-21
Dry Nitrous Systems.....	22
Safe Shot Nitrous System.....	23
Diesel Nitrous Systems.....	24-25
Motorcycle Nitrous Systems.....	26-27

Accessories

Nitrous Purge Kits.....	28
Show Purge Kit.....	28
LED Purge Kit.....	29
Machine Gun Purge Kit.....	29
Nitrous Pressure Gauge.....	30
Liquid Filled Pressure Gauge.....	30
Nitrous Pressure Regulator.....	30
Nitrous Bottle Heaters.....	31
Traction Control Window Switch.....	31
Programmable TPS Switch.....	31
Remote Bottle Valve Opener.....	32
Safety Blow Down Kits.....	32
Fuel Flow Check Tool.....	32
Add-A-Stage Nitrous Kit.....	33
Racer's Tuning Kit.....	33
Nitrous Fill Station.....	33
Fuel System.....	33
Nitrous Bottles & Accessories.....	34

Components

Nitrous Management Units.....	35
Nozzles.....	35
Plates.....	35
Electrical Components.....	36
Tools.....	36
Nitrous/Fuel Jets.....	37
Fittings.....	38-39
Steel Braided Hoses.....	40
Solenoids & Accessories.....	40

References

About Us.....	02
Zex™ Nitrous System Series Options.....	03
Merchandise & Apparel.....	41
Online Resources.....	42
Frequently Asked Questions.....	43
COMP Performance Group™ Family.....	44
Warranty.....	45

QUICK REFERENCE GUIDE

- Application Chart
- Spark Plugs

* see insert



ABOUT US

ZEX™ - SAFER • SMARTER • FASTER

Since its founding in 1998, ZEX™ has designed and manufactured truly superior bolt-on nitrous systems and related components. We integrate advanced technology and superior customer service to provide you with the ideal nitrous solution for any application.



As a member of the COMP Performance Group™, ZEX™ is able to utilize countless R&D resources for constant new product developments. Our innovative designs and custom-fit nitrous systems allow for easy installation and optimized performance. Patented technological developments such as our Active Fuel Control™, which adjusts fuel enrichment with changes in the bottle pressure, now enables safer, more efficient nitrous injection for increased horsepower gains without sacrificing engine safety.



In addition to nitrous systems, our product line also includes a full line of innovative nitrous accessories, spark plugs and much more. With cutting edge ZEX™ nitrous technology you can be sure that no power-adding option is safer, smarter or faster.





ZEX™ NITROUS SYSTEM SERIES OPTIONS

When it comes to nitrous, we know it's not only about finishing first, but about looking good while doing it. This is why we insist that every one of our nitrous bottles has a sleek, show-quality shine in your choice of finishes.

NEW

Blackout Nitrous System™

ZEX™ Blackout Nitrous Systems™ are the newest addition to the ZEX™ family, featuring unprecedented looks, performance and power potential. Like all ZEX™ nitrous systems, the Blackout kits incorporate the most technologically advanced performance features available, including the patented ZEX™ Active Fuel Control™. This feature automatically adjusts the nitrous fuel enrichment so your engine never runs too rich or too lean. Power settings vary for each application specific system, and all kits ship complete with appropriate tuning jets, as well as fuel tap fittings, solenoids, filters and all necessary activation electronics. Systems feature all-new black powder-coated bottles, carbon-fiber looking hoses and fittings for a variety of carbureted and fuel injection applications that are perfect for street/strip and all out drag-racing.

*Blackout Nitrous Systems™ & bottles are denoted by a "B" at the end of the part #.



Classic Purple Nitrous System

The ZEX™ Classic Purple Nitrous System is iconic ZEX™. On-lookers will recognize the infamous purple bottle as you race past the competition. This Classic Purple System is sure to draw attention and have the crowd talking.

*Classic Purple Nitrous Systems & bottles are denoted when NO letters appear at the end of the part #.



Polished Nitrous System

Sure, you want your ZEX™ nitrous oxide injection system to deliver the ultimate in performance, but you also want it to look the part? The lustrous Polished Nitrous System adds the perfect amount of flash that boasts your horsepower gains.

*Polished Nitrous Systems & bottles are denoted by a "P" at the end of the part #.



FORD

Whether you have a Ford Mustang or an F-Series truck, ZEX™ can accommodate your nitrous needs. We offer complete nitrous kits for several Mustang applications as well as F-Series trucks, including diesels. Our Quick Reference Guide has a complete listing of Ford specific kits and accessories.



Custom designed nitrous system is specifically tailored to the Mustang's new 5.0L V8 engine.



Includes a custom designed billet fuel rail adapter for installing nitrous on 2005-2010 Mustangs.



Innovative cigarette lighter power adapter provides power for the V6 Mustang kit but doubles as an arming switch.



NEW

2011-Current Mustang GT Nitrous System

ZEX™ engineers have custom designed the first plug-and-play nitrous system on the market specifically designed for the 2011-Current Ford Mustang GT 5.0L. This system is specifically tailored to the Mustang's new 5.0L V8 engine. ZEX™ engineers not only tuned the kit to add 75-175 additional horsepower, but also made the installation easy and ensured engine safety at the same time.

- Adjustable from 75-175 additional HP
- Active Fuel Control™ adjusts fuel delivery with changes in nitrous bottle pressure
- Throttle-by-wire TPS switch activates nitrous at wide open throttle

DESCRIPTION	PART #
2011-Current Mustang GT Nitrous System (Purple)	82390
2011-Current Mustang GT Blackout Nitrous System™	82390B

2005-2010 Mustang GT Nitrous System

Due to a fuel system redesign on the 2005 to 2010 Mustang GT, standard EFI nitrous kits are no longer compatible for these vehicles. ZEX™ developed a plug-and-play kit especially for these Mustangs that is adjustable from 75-175 horsepower. The kit comes with all necessary components, including solenoids, filters and activation electronics - all assembled in the Nitrous Management Unit.

- Adjustable from 75-175 HP; perfect for stock or modified engines
- Patented electronic TPS switch activates nitrous at wide open throttle
- Includes a billet fuel rail adapter for tapping into the Mustang's fuel system; a must-have component when installing nitrous on 2005-2010 Mustangs

DESCRIPTION	PART #
2005-2010 Mustang GT Nitrous System (Purple)	82034
2005-2010 Mustang GT Nitrous System (Polished)	82034P
2005-2010 Mustang GT Blackout Nitrous System™	82034B

2005-2010 V6 Mustang Nitrous System

With a strong factory rated 4.0L V6 putting out a solid 210 horsepower, the V6 Mustang is an excellent candidate for a shot of nitrous. This direct-fit wet nitrous system, made specifically for the new generation V6 Mustang, includes all necessary hoses, wires and even a custom machined billet fuel rail adapter that have all been engineered and manufactured for a perfect fit on these Mustangs.

- Designed to add anywhere from 55-100 HP
- Includes fuel rail adapter custom designed for this application
- Designed specifically for plug & play installation in S197 4.0L V6 Mustangs

DESCRIPTION	PART #
2005-2010 V6 Mustang Nitrous System (Purple)	82307



FORD

Patent #s: 6,234,155
7,147,173



#82217B

2005-2010 High Output Mustang Nitrous System

If our standard street nitrous kits aren't enough power, this is just the system you need. Designed specifically for Ford Modular 3V engines, this easy-to-install kit features jets to allow tunability from 100-250 horsepower. The kit also features our patented electronic TPS switch that reliably activates the system at wide open throttle, perfect for the Mustang's throttle-by-wire technology.

- Adjustable from 100-250 HP
- High-flow nitrous and fuel solenoids for maximum power potential
- Active Fuel Control™ adjusts fuel flow as bottle pressure varies, so you're never too rich or too lean

DESCRIPTION	PART #
2005-2010 High Output Mustang Nitrous System (Purple)	82242



High-flow nitrous and fuel solenoids provide maximum power & reliable activation in the High Output Mustang Kit.

1999-2004 Mustang GT Nitrous System

Finally, a custom made kit for 1999-2004 Mustangs. With power settings adjustable from 75-175 horsepower, this kit features custom engineered hoses, wires and billet fuel rail adapters for a perfect fit and easy install. Like all ZEX™ kits, this system features Active Fuel Control™ to adjust fuel enrichment and uses an electronic TPS switch for perfect nitrous activation at wide open throttle.

- 75-175 HP, a perfect power range for stock or fully built engines
- Billet fuel rail adapter bolts right on, no drilling required for the kit's fuel connections
- Fuel jets have been tuned for the 40 psi fuel pressure found on these Mustangs

DESCRIPTION	PART #
1999-2004 Mustang GT Nitrous System (Purple)	82217
1999-2004 Mustang GT Blackout Nitrous System™	82217B



Billet fuel rail adapter bolts directly on to 1999-2004 Mustang GTs – no drilling or cutting of lines required.

RECOMMENDED ACCESSORIES



- | | |
|--|-------------|
| ◀ Nitrous Purge Kit (Part #82010) | See page 28 |
| Liquid Filled Pressure Gauge (Part #82341) | See page 30 |
| Adj. Pressure Controlled Nitrous Bottle Heater (Part #82369) | See page 31 |
| Traction Control Window Switch (Part #82085) | See page 31 |
| Remote Bottle Valve Opener (Part #82009) | See page 32 |
| Black Velvet Bottle Bag (Part #82000B) | See page 34 |

GENERAL MOTORS

Patent #s: 6,234,155
7,147,173

GM produces some of the most popular applications on the road, and ZEX™ has created nitrous kits for many of them, including the widely used LSX engines. We also have universal systems for many other GM vehicles;



#82235B



Extra long 18 ft. feed line is provided for clean bottle installation in an LS-equipped F-Body's deep trunk.

LSX Nitrous System

The LSX Nitrous System is specifically fuel tuned for GM's LSX engines (LS1, -2, -3, -6, -7, L99, Gen III & Gen IV). These engines use higher fuel pressures (58 psi) and have noticeable power increases when custom jetted. In addition to optimized jet tuning, this kit also includes an extra long 18 ft. nitrous feed line from the bottle. This is nearly 2 feet longer than most universal kits, but it gives you the extra length needed for installing the nitrous bottle deep in an F-Body chassis trunk.

- Adjustable from 75-175 HP
- Extra long nitrous feed line for easy installation in all F-Bodied vehicles
- For optimum safety, ZEX™ electronics use the vehicle's TPS sensor to activate the nitrous system only at wide open throttle

DESCRIPTION	PART #
LSX Nitrous System (Purple)	82235
LSX Blackout Nitrous System™	82235B



GENERAL MOTORS

LSX High Output Nitrous System

Our LSX (LS1, -2, -3, -6, -7, L99, Gen III & Gen IV) High Output System is ideal for any GM LSX-powered vehicle looking for a serious power upgrade from the standard ZEX™ system. This kit features giant, high-flow nitrous and fuel solenoids and -4AN nozzle feed lines. All of this high-flow hardware allows you to spray from 100-250 horsepower. Also included with this ZEX™ system is Fuel Shear™ Technology, which injects enrichment fuel directly in the nitrous plume for better atomization.

- Allows you to spray from 100-250 HP
- Enrichment fuel injected into nitrous plume for better atomization
- Engineered specifically for GM engines

DESCRIPTION	PART #
LSX High Output Nitrous System (Purple)	82087
LSX High Output Nitrous System (Polished)	82087P



Large, high-flow solenoids for big power & a programmable TPS switch for electronic throttle activation on LSX engines are included in the High Output Kit.

NEW

2010-Current V6/V8 Camaro Nitrous Systems

With the release of the 2010 Chevy Camaro, ZEX™ engineers have custom designed two nitrous systems specifically tailored to the Gen V Camaro engine, one for the V6 and another for the V8. The V6 kit offers a 55-100 horsepower upgrade, while the V8 version adds 75-175 additional horsepower. Each kit is designed to have an easy installation, and Active Fuel Control™ adjusts fuel delivery with changes in bottle pressure to operate at a safe air/fuel ratio. The easy-to-install ZEX™ systems are available in both the classic purple or the new Blackout series with black powder coated bottle and all necessary accessories for a simple, two hour installation. With all the extra torque and horsepower, it's not uncommon to see over one second improvements in the quarter mile.

- V6 system adjustable from 55-100 additional HP
- V8 system adjustable from 75-175 additional HP
- Active Fuel Control™ adjusts fuel delivery with changes in nitrous bottle pressure

DESCRIPTION	PART #
2010-Current Gen V V6 Camaro Nitrous System (Purple)	82367
2010-Current Gen V V6 Camaro Blackout Nitrous System™	82367B
2010-Current Gen V V8 Camaro Nitrous System (Purple)	82380
2010-Current Gen V V8 Camaro Blackout Nitrous System™	82380B



Available for both the V6 & V8 applications, this system is specifically tailored for clean installation into the 2010-Current Camaro.

Silverado Nitrous System

Safely add 75-125 horsepower to 1999 and newer Vortec V8-powered Chevy Silverado trucks. This nitrous kit was specifically designed to fit on Chevrolet's 4.8L, 5.3L and 6.0L Vortec V8 engines and features patented ZEX™ technology, including Active Fuel Control™ to adjust fuel enrichment and an electronic TPS sensor to automatically engage nitrous at wide open throttle. You won't find a more powerful or easy-to-install system on the market.

- Fully adjustable power settings from 75-125 HP
- Custom engineered components for a clean install on your truck
- Factory pre-assembled for a simple, two hour installation

DESCRIPTION	PART #
Silverado Nitrous System (Purple)	82231



Extra long nozzle lines make Nitrous Management Unit placement in the Silverado's engine bay much easier.

Chrysler fans are dedicated to their vehicles so we dedicated a full range of nitrous systems to Chrysler engines. We have a kit for everything from Hemi trucks to Jeep Grand Cherokees and everything in between.



#82322B



Hemi Challenger Nitrous System

Engineered for a simple plug-and-play installation into the 2008-current Hemi Challenger, this system includes a custom designed fuel line adapter and brackets. The ultimate in engine safety, this kit uses an advanced safety technology called Active Fuel Control™ as well as an electronic TPS switch. The system's technology monitors the nitrous bottle pressure and adjusts the kit's fuel enrichment so you get the perfect power boost when you need it without running too rich or too lean.

- Safely adds 75-125 fully adjustable HP
- Designed specifically for plug-and-play installation
- Active Fuel Control™ adjusts fuel enrichment with variations in bottle pressure

Specially designed wet nitrous system delivers 75-175 additional horsepower for the 2008-Current Hemi Challenger.

DESCRIPTION	PART #
Hemi Challenger Nitrous System (Purple)	82322
Hemi Challenger Blackout Nitrous System™	82322B



Hemi Truck Nitrous System

Safely add 75-125 horsepower to 2003 and newer Chrysler Hemi truck engine applications. The late model Hemi electronic fuel injected engines are the perfect platform for nitrous upgrades. The Hemi Truck Nitrous System has several unique features, including an in-line style fuel adapter that just snaps into place. The Hemi trucks also have a relatively high base fuel pressure, 58 psi, requiring a special jet selection that's included in the kit for perfect tuning.

- Safely adds 75-125 HP
- Custom length hoses and wiring for a clean install on these trucks
- Special jet selection included for optimum fuel tuning

DESCRIPTION	PART #
Hemi Truck Nitrous System (Purple)	82176
Hemi Truck Nitrous System (Polished)	82176P
Hemi Truck Blackout Nitrous System™	82176B



In-line style fuel adapter easily snaps into place on Hemi trucks.

Hemi Charger/Magnum Nitrous System

The 2005 and newer Charger/Magnum Nitrous System has a fuel tap adapter that replaces the factory fuel line assembly on the passenger side of the engine. Much like the Hemi truck engine, the Charger and Magnum Hemi engines also uses a high pressure, 58 psi, fuel system. Because of this, special jets are included in the kit for the optimum tuning.

- Kit is fully adjustable from 75-125 HP
- Fuel line adapter for the nitrous kit replaces passenger-side O.E.M. fuel line assembly
- Kit fits the SRT8 models perfectly, make an easy 500+ HP with the 6.1L engine

DESCRIPTION	PART #
Charger/Magnum Nitrous System (Purple)	82177
Charger/Magnum Nitrous System (Polished)	82177P



Custom fuel line kit includes OEM quality connectors and hose for the Charger/Magnum system.

Jeep Grand Cherokee SRT8 Nitrous System

Add this kit to an otherwise stock Jeep Grand Cherokee SRT8 and you'll be running low 12s in the quarter mile. Mildly modified Jeep SRT8s have already been in the 11s. The custom Jeep SRT8 fuel rail adapter clears the tight fuel rail connection at the back of the engine and is adjustable from 75-125 horsepower. Included is special fuel jetting for the 6.1L Hemi engine.

- Adjustable from 75-125 HP
- Special fuel line adapter for the Jeep SRT8 engine makes for easy install
- Low 12 second quarter mile for stock Jeep, high 11 second E.T. with basic bolt-ons

DESCRIPTION	PART #
Jeep Grand Cherokee SRT8 Nitrous System (Purple)	82241



Supplied fuel line quick connectors make installation on the SRT8 easy with no cutting or drilling needed.

SPORT COMPACT

Small displacement sport compact vehicles respond amazingly well to nitrous oxide injection. Understanding the engineering behind these complex power plants, ZEX™ has designed highly sophisticated systems that are easy-to-install. Take a look at all the sport compact application specific nitrous kits ZEX™ has to offer.



#82220P



Every hose, wire & a custom machined billet fuel rail adapter has been engineered specifically for a perfect fit on the 2003-2006 350Z.



This kit for 2007 & later 350Zs ships with fuel line quick connectors to simplify the installation process.



Adjustable boost switch deactivates nitrous once turbo spools up.

2003-2006 Nissan 350Z Nitrous System

The ZEX™ 2003-2006 350Z Nitrous System is the only direct fit nitrous system on the market for this incredible car. The kit includes a custom designed billet fuel adapter that simply bolts on to the factory fuel rail. This adapter keeps you from having to cut any fuel lines during installation. Because of the 350Z's higher than usual base fuel pressure of 51 psi, we have also included a custom set of tuning jets that not only maximize power but engine safety as well.

- Adjustable from 55-100 HP; perfect for serious performance increases
- ZEX™ Active Fuel Control™ adjusts fuel enrichment with variations in bottle pressure; you are never too rich or too lean
- ZEX™ electronics activate the nitrous system only at wide open throttle

DESCRIPTION	PART #
2003-2006 Nissan 350Z Nitrous System (Purple)	82220
2003-2006 Nissan 350Z Nitrous System (Polished)	82220P

2007-2009 Nissan 350Z Nitrous System

ZEX™ has developed an innovative wet nitrous system for the dual throttle body engine in 2007-2009 350Zs that can add anywhere from 75-100 horsepower. ZEX™ electronics use the vehicle's throttle-by-wire system to activate the nitrous at wide open throttle, and Active Fuel Control™ Technology adjusts fuel enrichment with variations in bottle pressure, so you're never too rich or too lean.

- Power settings are fully adjustable from 75-100 HP with supplied tuning jets; perfect for mild to wild performance
- Hoses, wires & fuel line adapter are custom designed for the 2007 & newer 350Z
- Designed for a plug & play installation on 350Z dual throttle body engines

DESCRIPTION	PART #
2007-2009 Nissan 350Z Nitrous System (Purple)	82238
2007-2009 Nissan 350Z Nitrous System (Polished)	82238P

Turbo Nitrous System

The ZEX™ Turbo Nitrous System is specifically designed to help spool-up engines equipped with big turbos. This kit has all of the same great features as our standard EFI wet nitrous systems but includes the addition of a fully adjustable boost switch. This innovative switch allows you to spray a small shot of nitrous to help spool-up the turbo. Then, as soon as a certain level of turbo boost is reached, the nitrous automatically shuts off.

- Adjustable from 25-75 HP
- Eliminates boost lag for instant turbo power
- Shuts off nitrous once the turbo has spooled-up

DESCRIPTION	PART #
Turbo Nitrous System (Purple)	82218



SPORT COMPACT

Patent #: 6,234,155
7,147,173



#82314

Scion tC Nitrous System

The ZEX™ plug & play nitrous system for the 2005-current Scion tC is designed for perfect fitment and installs in just two hours. The kit includes OEM quality fuel connectors, making it easy to hook-up the nitrous system's fuel connections. The kit also includes custom tuning options for maximum power and safety.

- **Designed to add 55-75 additional HP**
- **Electronic TPS switch activates nitrous at wide open throttle**
- **Custom fuel connectors are supplied to make installation simple; no cutting or drilling of your factory fuel system lines is required**

DESCRIPTION	PART #
Scion tC Nitrous System (Purple)	82321
Scion tC Blackout Nitrous System™	82321B



Supplied fuel line quick connectors make the installation process easy, with no cutting or drilling needed.

Honda Fit Nitrous System

Add a burst of power to your Honda with a ZEX™ nitrous kit made just for the 2007-Current Honda Fit. Nothing will get you out ahead of the competition like a shot of nitrous. ZEX™ has made it easy with a custom designed nitrous system that installs in just two hours and adds anywhere from 35-55 additional horsepower. Everything is designed for a clean, custom looking installation.

- **Adjustable from 35-55 HP; perfect for serious performance increases**
- **ZEX™ electronics activate the nitrous system only at wide open throttle; works perfectly with the throttle-by-wire technology found on the Fit**
- **Designed for a custom, plug & play installation on all 2007-current Honda Fits**

DESCRIPTION	PART #
Honda Fit Nitrous System (Purple)	82314



Customized fuel line connectors make each ZEX™ nitrous kit a perfect fit for the requested application

RECOMMENDED ACCESSORIES



Nitrous Purge Kit (Part #82010)	See page 28
◀ Liquid Filled Pressure Gauge (Part #82341)	See page 30
Adj. Pressure Controlled Nitrous Bottle Heater (Part #82369)	See page 31
Traction Control Window Switch (Part #82085)	See page 31
Remote Bottle Valve Opener (Part #82009)	See page 32
Black Velvet Bottle Bag (Part #82000B)	See page 34



WET NOZZLE TECHNOLOGY

Most nozzle designs are all alike. Other manufacturers may change a hole location here or a tip angle there, but in reality, there really hasn't been a breakthrough in nozzle technology in over 20 years... until now. The most important function of a nozzle is to properly mix and atomize the correct amounts of nitrous and fuel. Some designs spray a solid stream of fuel at the nitrous stream and hope that it will atomize properly. Other designs are forced to run excessively rich, so when nitrous bottle pressure and flow increase, their systems won't run dangerously lean. ZEX™ has developed two new nozzle technologies that not only give our design the ability to atomize the fuel to levels never achieved before, but also to adjust fuel delivery on its own. The result is a nozzle that atomizes fuel and nitrous better than any previous design and provides the optimized tune-up at all bottle pressures. These groundbreaking technologies give you a significant power advantage over conventional nozzles.



POWER ADVANTAGE #1 Fuel Shear™ Technology:

ZEX™ Fuel Shear™ Technology injects enrichment fuel using a fuel transfer tube. This tube allows the ZEX™ nozzle to directly inject fuel into the highest velocity area of the nitrous plume. This high-speed nitrous shears the fuel away from the tube, atomizing it to levels other nozzle designs never achieve. This high level of atomization ensures perfect fuel distribution from cylinder to cylinder, ensuring one cylinder is never dangerously rich or lean, like competitor's nozzles. This finely atomized mixture delivered by the ZEX™ nozzle also burns more powerfully and maximizes the horsepower you get from your nitrous system.

Patent #: 7,147,173

POWER ADVANTAGE #2 Active Fuel Control™ Technology:

Active Fuel Control™ is a revolutionary nitrous tuning and safety feature. In your engine, a vacuum is created as nitrous gas is sprayed across the open end of the nozzle's fuel transfer tube. As bottle pressure rises or lowers due to bottle temperature changes, the speed of the nitrous discharge varies to the same degree. This causes the level of vacuum draw in the fuel transfer tube to vary as well. This variable vacuum draw causes the ZEX™ nozzle to actually "pull" more or less enrichment fuel into the engine. This means your engine never runs dangerously lean or overly rich. The nitrous tune-up stays dead-on for maximum engine safety and power at all times.



NITROUS
OUTLET

FUEL
TRANSFER
TUBE





UNIVERSAL WET KITS

Patent #s: 6,234,155
7,147,173

4-6 Cylinder EFI Wet Nitrous System

The ZEX™ 4-6 Cylinder Wet Nitrous Kit is a universal kit that is designed to work safely on stock type engines but is also engineered to perform flawlessly on highly modified turbocharged and supercharged applications. It is a simple, two hour installation and the kit includes proper tuning jets, a range of fuel tap fittings, solenoids, filters and activation electronics that are factory pre-assembled in the Nitrous Management Unit.

- Includes jets for adding 55-75 HP
- Active Fuel Control™ monitors bottle pressure & adds or subtracts enrichment fuel for maximum engine safety & power
- Engineered for stock type engines but will also work on highly modified engines



#82021B

DESCRIPTION	PART #
4-6 Cylinder EFI Wet Nitrous System (Purple)	82021
4-6 Cylinder EFI Wet Nitrous System (Polished)	82021P
4-6 Cylinder EFI Wet Blackout Nitrous System™	82021B

V8 EFI Wet Nitrous System

Another universal kit designed to work with stock type engines is our V8 EFI Nitrous System. Designed to provide anywhere from 75-125 additional horsepower, this can also be installed on turbocharged/supercharged vehicles and is still only a two hour installation. All necessary components are shipped with the kit, including tuning jets, fuel tap fittings and a Nitrous Management Unit that contains solenoids, filters and activation electronics.



#82023

- Designed to provide 75-125 HP
- Uses both Active Fuel Control™ to monitor bottle pressure and a ZEX™ patented TPS switch to activate nitrous
- Ships with tuning jets, fuel tap fittings, solenoids, filters and all necessary activation electronics

DESCRIPTION	PART #
V8 EFI Wet Nitrous System (Purple)	82023
V8 EFI Wet Nitrous System (Polished)	82023P
V8 EFI Wet Blackout Nitrous System™	82023B

Truck Nitrous System

This nitrous system is specially engineered for the performance and safety needs of hot rod, off-road and late model truck owners. When designing the truck nitrous systems, ZEX™ engineers looked at truck configurations, which feature larger engine bays and different in-cab mounting locations than cars. Designed to work equally well on 4, 6 or 8 cylinder EFI engines, the Truck Nitrous System is a perfect fit on pickup trucks.

- Adjustable from 55-125 HP
- Active Fuel Control™ monitors bottle pressure to adjust fuel enrichment
- Nitrous activates electronically at wide open throttle using engine TPS; perfect nitrous engagement, especially on new throttle-by-wire trucks
- Designed specifically for trucks that feature large engine bays and different in-cab mounting locations than cars

DESCRIPTION	PART #
Truck Nitrous System (Purple)	82047
Truck Nitrous System (Polished)	82047P



#82047

UNIVERSAL WET KITS

NEW

Patent #s: 6,234,155
7,147,173

Race EFI Nitrous System

For serious race applications, the ZEX™ Race EFI Nitrous System is the best choice. Featuring Fuel Shear™ Technology, enrichment fuel is injected directly into the center of the nitrous plume, yielding total and even fuel atomization. Tunable from 100-250 horsepower, the race kit features other important ZEX™ features such as Active Fuel Control™ to adjust fuel enrichment with fluctuations in bottle pressure and the patented ZEX™ electronic TPS switch for nitrous activation at wide open throttle.

- Delivers 100-250 HP increase
- Features several unique ZEX™ technologies: Active Fuel Control™, Fuel Shear™ Technology & patented TPS switch
- Designed for serious street/strip & race applications

#82037P



DESCRIPTION	PART #
Race EFI Nitrous System (Purple)	82037
Race EFI Nitrous System (Polished)	82037P

RECOMMENDED ACCESSORIES



Nitrous Purge Kit (Part #82010)	See page 28
Liquid Filled Pressure Gauge (Part #82341)	See page 30
◀ Adj. Pressure Controlled Nitrous Bottle Heater (Part #82369)	See page 31
Traction Control Window Switch (Part #82085)	See page 31
Remote Bottle Valve Opener (Part #82009)	See page 32
Black Velvet Bottle Bag (Part #82000B)	See page 34



UNIVERSAL WET KITS

Dual Stage EFI Nitrous System

The ZEX™ Dual Stage EFI Nitrous System is more effective than a typical single stage system because it gradually adds the nitrous power in two separately controlled stages, instead of as one big “hit”, to give you a faster quarter mile ET. The first nitrous stage is activated automatically when you go to wide open throttle via the TPS-mounted switch. The second stage activates when you press an additional activation push-button. It also includes jets for adding an extra 50-300 horsepower and is a complete kit, right down to the wire ties.

- Tunable from 50-300 additional HP
- Two separate power stages for maximum traction control
- Fuel Shear™ Technology injects enrichment fuel directly into nitrous plume for better atomization
- Active Fuel Control™ adjusts fuel enrichment in accordance with bottle pressure so you'll never run too rich or too lean again

#82065



DESCRIPTION	PART #
Dual Stage EFI Nitrous System (Purple)	82065

Dual Nozzle EFI Nitrous System

ZEX™ has developed an innovative wet nitrous system designed specifically for any dual throttle body EFI engine. Two nozzles, dual feed lines, all required hoses, wires and fittings have been engineered and manufactured for a perfect fit on any dual throttle body engine. You won't find a more powerful or easy-to-install nitrous system on the market.

- Designed specifically for dual throttle body equipped engines
- Adjustable from 75-175 HP; perfect for mild to wild performance
- ZEX™ electronics use the vehicle's TPS sensor to activate the nitrous system at wide open throttle; fully compatible with throttle-by-wire engines
- ZEX™ Active Fuel Control™ adjusts fuel enrichment with variations in bottle pressure; you're never too rich or too lean

#82194



DESCRIPTION	PART #
Dual Nozzle EFI Nitrous System	82194

DIRECT PORT

4 Cylinder EFI Direct Port Nitrous System

The ZEX™ 4 Cylinder EFI Direct Port Nitrous System is unique in that it comes with pre-made nozzle flex lines to make installation a snap, so you don't have to spend hours cutting and bending traditional hard-lines. This kit also features a unique dual stage jetting system that gives you much finer cylinder-to-cylinder tuning options. The kit adds 50-200 horsepower and uses our patented fuel adjusting nitrous nozzle.

- Adjustable from 50-200 HP, perfect for fully built competition engines
- Uses one injector nozzle per cylinder for perfect nitrous and fuel distribution
- Dual stage jet technology uses one jet in the distribution block and one jet in the injector nozzle to offer finer tuning adjustments & HP level changes



#82030

DESCRIPTION	PART #
4 Cylinder EFI Direct Port Nitrous System	82030



DIRECT PORT

Patent #: 6,234,155

LSX™ Manifold Direct Port Nitrous System

The ZEX™ LSX™ Manifold Direct Port Nitrous System is the only custom made system for the FAST™ LSX™ Intake Manifold. Like all of our EFI Direct Port Systems, the kit includes custom distribution flex lines for easy installation. Designed to add from 75-300 horsepower, the kit uses a patented injector nozzle that delivers optimum nitrous and fuel atomization and activates at wide open throttle using our patented throttle position sensor technology.

- Adds anywhere from 75-300 HP
- Uses custom made distribution flex-lines that give it a perfect fit on the popular FAST™ LSX™ Intake Manifold
- Includes 10 lb. bottle, brackets, nitrous & fuel solenoids, electronic throttle activation switch & all plumbing & electrical connectors required for installation



#82032

DESCRIPTION	PART #
LSX™ Manifold Direct Port Nitrous System	82032



Small & Big Block V8 EFI Direct Port Nitrous Systems

A complete, easy-to-install direct port nitrous system for any V8 EFI engine. The kit adds 75-300 horsepower; uses our self-adjusting, patented injector nozzles; and activates nitrous at wide open throttle using our patented throttle position sensor switch technology. The kit includes everything necessary, including a bottle, brackets, solenoids, plumbing and electrical connectors, making it a snap to install on virtually any V8 EFI engine.

- Adjustable from 75-300 HP
- Uses distribution flex lines that make for an easy fit on your intake manifold; no time wasted on bending and cutting hard lines
- Includes a 10 lb. nitrous bottle, brackets, nitrous and fuel solenoids, electronic throttle activation switch and all plumbing and electrical connectors



#82062

DESCRIPTION	PART #
Small Block V8 EFI Direct Port Nitrous System	82062
Big Block V8 EFI Direct Port Nitrous System	82063

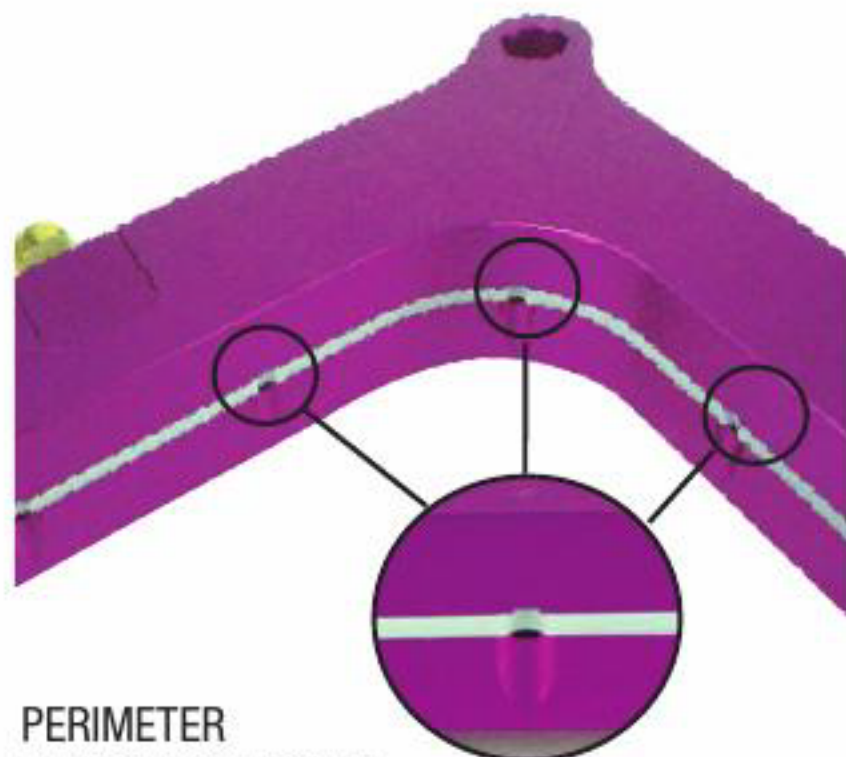
PERIMETER PLATE TECHNOLOGY

Typical spray bar nitrous plates are built on obsolete 30-year-old technology. Not surprisingly, these plates suffer from design compromises that can result in less-than-optimal performance and reliability. For example, because of their inherent inefficiency, traditional plate systems are usually calibrated to create an overly rich fuel mixture in some cylinders, simply to prevent a lean condition in others. The ZEX™ Perimeter Injection™ Technology uses incredibly precise metering and distribution to eliminate this imbalance. It's a whole new way of thinking about plate systems! The engineering process that yielded these advances took over two years to complete and resulted in three totally new nitrous technologies, each of which gives you a significant power advantage over conventional plate systems.

POWER ADVANTAGE #1

Perimeter Injection™ Technology:

Unlike traditional nitrous kits, the ZEX™ Perimeter Plate employs multiple injection points to create a perfectly atomized blend of fuel and nitrous. This mixture is then fired directly into the center of the intake plenum, ensuring equal dispersal between cylinders. By optimizing cylinder-to-cylinder distribution, ZEX™ Perimeter Injection™ Technology generates maximum power without sacrificing engine safety.



PERIMETER INJECTION™ POINTS



POWER ADVANTAGE #2

Cryo-Sync™ Technology:

The ZEX™ Perimeter Plate routes the nitrous through a set of internal passages before spraying it into your engine. During this circulation process, the nitrous temperature drops to 127 degrees below zero! This cryogenic phenomenon effectively turns the plate into an ultra-efficient Cryo-Sync™, cooling your carburetor and intake manifold for additional power.

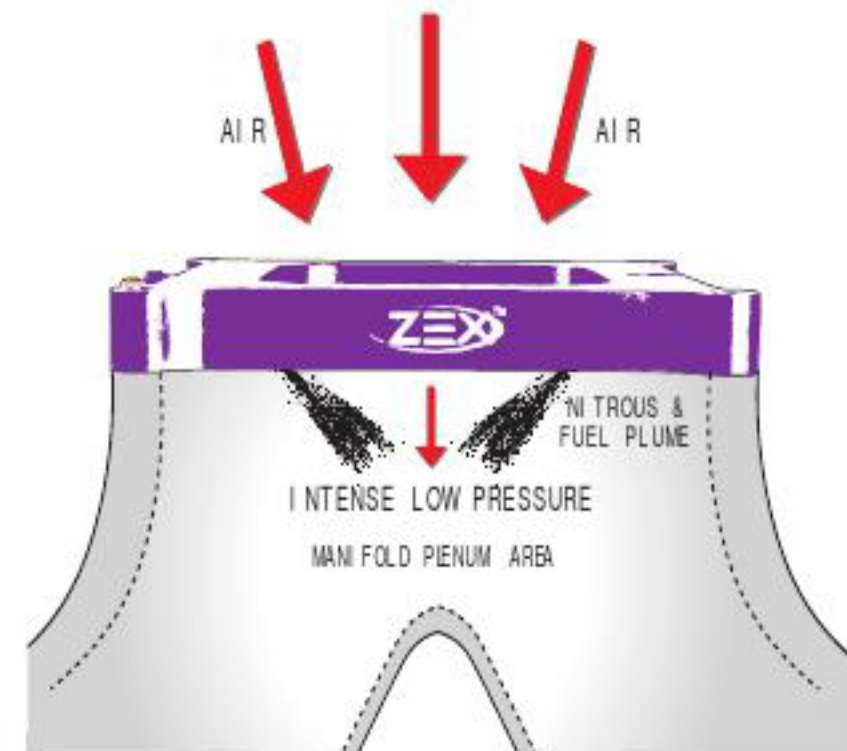
** Go to ZEX.com for a video clip demonstrating the Cryo-Sync™ Technology at work.*



POWER ADVANTAGE #3

Airflow Enhancement™ Technology:

The ZEX™ Perimeter Plate has been designed to inject the nitrous at an optimized angle, toward the center of the intake plenum. In addition to ensuring proper cylinder distribution, this ZEX™-developed technology creates a pocket of intense low pressure just below the carburetor while the nitrous is being sprayed. This low-pressure area enhances airflow into your engine, which further improves power gains.



MAKE THE SWITCH – Whether you're installing a new plate nitrous system or simply want to upgrade your old setup for improved performance, ZEX™ has a Perimeter Plate package to fit your needs. Our Perimeter Plate Nitrous System (Part #82040) is a complete, bolt-on kit that is adjustable from 100-300 horsepower. For those of you who are currently using a traditional spray-bar type plate system, we offer our easy-to-install Perimeter Plate Conversion Kit (Part #82043).



PERIMETER PLATE



#82195



LS Series Perimeter Plate Conversion Kit comes with plate & adapter (shown); also includes all necessary gaskets & bolts.

NEW

LS SERIES PERIMETER PLATE BLACKOUT NITROUS SYSTEM™

Typical spray bar nitrous plates are built on 30 year old technology and suffer from design compromises that can result in less than optimal performance and reliability. But ZEX™ has created three advanced nitrous technologies, each of which gives the user significant power advantages over conventional plate systems. And now, ZEX™ has a complete, race ready perimeter plate system for LS applications that is compatible with both cable and throttle-by-wire engines and is a direct fit for the new FAST™ LSX_{RT}™/LSX_{RT}™ 102mm Intake Manifolds. Adjustable from 100-250 horsepower, the system provides optimum spray efficiency and fuel distribution with nitrous and fuel outlets placed at 12 injection points around the perimeter of the intake manifold's inlet.

- Activated at wide open throttle using ZEX™ patented electronic TPS switch (Part# 82195)
- Cryo-Sync™ Technology cools throttle body while nitrous sprays, thus creating a cooler air charge & greater HP
- Airflow Enhancement™ Technology creates a pocket of intense low pressure just behind throttle body, as nitrous is being sprayed, that enhances airflow into engine for greater HP gains
- Included adapter ring allows plate to fit all 90mm and larger, 4-bolt style OEM and aftermarket throttle body/manifold combinations
- Perimeter plate conversion kit is available separately for converting any single-nozzle nitrous system to perimeter injection

DESCRIPTION	PART #
LS Series Perimeter Plate Blackout Nitrous System™ (Throttle-By-Wire)	82195
LS Series Perimeter Plate Blackout Nitrous System™ (Non Throttle-By-Wire)	82391
LS Series Perimeter Plate Conversion Kit	82039

Dual Perimeter Plate Nitrous Systems

Until recently, nitrous systems for dual 4-barrel intake manifolds have consisted of a couple of plates bolted under the carburetors, equipped with crude brass spray bars to inject nitrous and fuel into the intake charge. The ZEX™ system has nitrous and fuel outlets placed at 24 injection points around the perimeter of the intake manifold's plenum. This distributes nitrous oxide and fuel perfectly and guarantees the most horsepower possible. With another ZEX™-developed technology called Cryo-Sync™, super chilled nitrous is injected through the ZEX™ plates to cool the carbs and intake before being injected into the engine. Finally, ZEX™ Airflow Enhancement™ Technology creates an intense low pressure area under the carbs while you spray, helping to smooth and increase the airflow into the engine.

- Tunable from 100-300 HP
- Fits all side-by-side, dual 4-barrel intake manifolds
- Available for both square flange & Dominator applications

DESCRIPTION	PART #
Square Flange Dual Perimeter Plate Nitrous System (Purple)	82185
Square Flange Dual Perimeter Plate Nitrous System (Polished)	82185P
Dominator Dual Perimeter Plate Nitrous System (Purple)	82190



#82190

PERIMETER PLATE

Perimeter Plate Nitrous Systems

Our revolutionary Perimeter Injection™ Technology provides optimum nitrous and fuel atomization for maximum horsepower. The ZEX™ Perimeter Plate Nitrous System is a complete kit that provides the optimum spray efficiency with nitrous and fuel outlets placed at 12 injection points around the perimeter of the intake manifold opening. This provides optimum distribution of nitrous oxide and fuel and delivers the most horsepower possible from your kit. Through an ingenious cooling technology called Cryo-Sync™, super chilled nitrous is injected through the ZEX™ plate before being injected into the engine. This rapidly cools the carburetor and intake manifold, generating even greater power. The ZEX™ Perimeter Plate Nitrous System is tunable from 100-300 horsepower and is available for both square flange and Dominator, four-barrel carbureted applications.

- Adjustable from 100-300 HP
- Nitrous & fuel are injected via outlets placed at 12 points around intake plenum
- Cryo-Sync™ Technology cools the carburetor & manifold for additional power
- Available for both square flange & Dominator four-barrel applications



DESCRIPTION	PART #
Square Flange Perimeter Plate Nitrous System (Purple)	82040
Square Flange Perimeter Plate Nitrous System (Polished)	82040P
Square Flange Perimeter Plate Blackout Nitrous System™	82040B
Dominator Perimeter Plate Nitrous System (Purple)	82048
Dominator Perimeter Plate Nitrous System (Polished)	82048P
Dominator Perimeter Plate Blackout Nitrous System™	82048B

Perimeter Plate Conversion Kits

Update your obsolete spray-bar type nitrous system with one of our Perimeter Plate Conversion Kits. This cost effective and easy-to-install alternative immediately delivers all the benefits of the ZEX™ Perimeter Plate Nitrous System without having to purchase an entirely new nitrous kit. The conversion kit includes the perimeter plate, fitted carburetor gaskets and jet conversion chart.



- Advanced Perimeter Injection™ technology results in even distribution of fuel and nitrous for maximum power & engine safety
- Creates a low pressure point in the intake plenum for increased engine airflow
- Utilizes three revolutionary ZEX™ patented nitrous technologies: Perimeter Injection™, Cryo-Sync™ Technology & Airflow Enhancement™ Technology
- Available for square flange & Dominator applications

DESCRIPTION	PART #
Square Flange Perimeter Plate Conversion Kit	82043
Dominator Perimeter Plate Conversion Kit	82072
LS Series Perimeter Plate Conversion Kit	82039

Add 'B' to any part # for a Blackout Kit



PERIMETER PLATE

EFI Perimeter Plate Nitrous System

For years, if you wanted to put a plate nitrous system on your formerly carbureted, now EFI manifold, you had to buy a carburetor plate kit and try to make it work by guessing the correct jetting for the application. ZEX™ developed the industry's only complete nitrous system specifically designed for popular square flange EFI conversion manifolds. You can now get all the benefits from the latest Perimeter Injection™ Technology in a powerful and safe, easy-to-install EFI nitrous kit that can instantly add anywhere from 100-300 horsepower!



#82221

- Adjustable from 100-300 HP
- Cryo-Sync™ Technology cools the perimeter plate, throttle body & manifold for added power
- Nitrous & fuel spray efficiently through outlets placed at 12 injection points around the plate
- Compatible with any square flange, four-barrel style, EFI conversion intake manifold

DESCRIPTION	PART #
Square Flange EFI Perimeter Plate Nitrous System	82221

Race Perimeter Plate Nitrous Systems

The ZEX™ Race Perimeter Plate Nitrous System is for the serious competitor who wants only the highest performing system on his or her race car. This race kit is fully adjustable between 100-450 horsepower. Featuring ZEX™ Perimeter Injection™ Technology, nitrous is injected directly into the intake manifold plenum in a 360 degree ring. This smoothes out the distribution and results in a consistent and safe power delivery. The system also benefits from Cryo-Sync™ Technology to help lower the temperature of the carb and manifold surfaces, creating a cooler, denser nitrous/fuel/air charge entering the engine. The system includes the perimeter plate, a 10 or 15 lb. nitrous bottle with high-flow race valve, -6AN feed lines and fuel and nitrous solenoids.

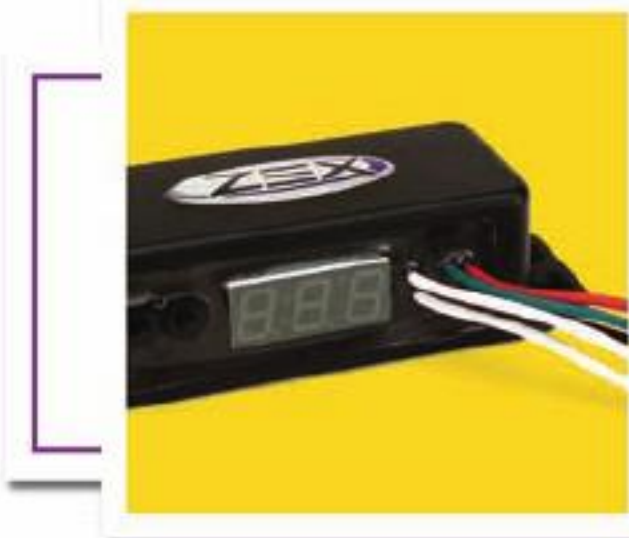
- Add anywhere from 100-450 HP
- Nitrous bottles available in 10 or 15 lb. size
- Both square flange & Dominator intake manifold applications available

#82237

DESCRIPTION	PART #
Square Flange Race Perimeter Plate System (10 lb. Purple Bottle)	82311
Square Flange Race Perimeter Plate System (10 lb. Blackout Bottle)	82311B
Square Flange Race Perimeter Plate System (15 lb. Purple Bottle)	82237
Dominator Race Perimeter Plate System (10 lb. Purple Bottle)	82312
Dominator Race Perimeter Plate System (10 lb. Blackout Bottle)	82312B
Dominator Race Perimeter Plate System (15 lb. Purple Bottle)	82310



RECOMMENDED ACCESSORIES



Nitrous Purge Kit (Part #82010)	See page 28
Liquid Filled Pressure Gauge (Part #82341)	See page 30
Adj. Pressure Controlled Nitrous Bottle Heater (Part #82369)	See page 31
◀ Traction Control Window Switch (Part #82085)	See page 31
Remote Bottle Valve Opener (Part #82009)	See page 32
Black Velvet Bottle Bag (Part #82000B)	See page 34

DRY KITS

Dry Nitrous Systems

ZEX™ Dry Nitrous Systems incorporate the patented Active Fuel Control™, which monitors nitrous bottle pressure and adjusts fuel enrichment to achieve the perfect mixture. This ensures your engine will never run too rich or too lean when you engage the nitrous system. ZEX™ nitrous activates at wide open throttle using an electronic switch that monitors your engine's TPS sensor. The design ensures that your nitrous is engaged at the perfect wide open throttle position every time. The design of the ZEX™ Dry Nitrous System makes it a simple and easy two hour installation.

- All major components are factory pre-assembled inside the Nitrous Management Unit
- A complete Dry system - everything is included for a safe, proper installation
- Designed to work safely on many fuel injected, naturally aspirated, return style fuel system engines

Patent #s: 5,967,099
6,105,563
6,234,155

#82015



EFI DRY NITROUS SYSTEMS APPLICATION CHART

VEHICLE	YEAR	PART #		HP RATING
Acura				
Integra	1986-2001	82011	82011P	55-75 HP
Chevrolet				
Camaro	1993-1997	82018	82018P	75-125 HP
Corvette	1993-1996	82018	82018P	75-125 HP
Ford				
Mustang 5.0	1986-1998	82015	82015P	75-125 HP
Honda				
Civic	1988-2000	82011	82011P	55-75 HP
Prelude S, SI, SH, VTEC	1988-2001	82011	82011P	55-75 HP
S2000	2000-2002	82011	82011P	55-75 HP
Hyundai				
Tiburon	1997-1999	82011	82011P	55-75 HP
Mitsubishi				
Eclipse 6 Cyl.	2000-2005	82011	82011P	55-75 HP
Nissan				
Sentra SE, SE-R	1991-1998	82014	82014P	55-75 HP
Pontiac				
Firebird/Trans Am	1993-1997	82018	82018P	75-125 HP
Saturn				
SL/SC	1991-1995	82014	82014P	55-75 HP
Volkswagen				
Golf	1993-2001	82016	82016P	55 HP
Jetta	1993-2001	82016	82016P	55 HP

*P denotes Polished Bottle Kit



QUICK REFERENCE GUIDE

See pages 2-17

Year	Part #	HP Rating
2001	82021	65-75 HP
2002-2008	82021	55-75 HP
2001-2005	82021	55-75 HP
All	82040	100-300 HP
1993-2002	82235	75-175 HP
1996-2002	82021	55
1990-2005	82021	
2005-Current	82021	
2005-Current	82021	



QUICK REFERENCE GUIDE



SPARK PLUGS

Vehicle	Year	Part #	HP Rating	Nitrous Systems <i>See Pages 4-27</i>	Power Tune™ Spark Plugs <i>See Quick Reference Guide Page E</i>	Power Racer™ Spark Plugs <i>See Quick Reference Guide Page E</i>	4 and 6 Cyl. Spark Plugs <i>See Quick Reference Guide Page F</i>	Purge Kits <i>See Pages 28-29</i>
					Part #	Part #	Part #	Part #
ACURA								
Integra RS, LS, GS, & GSR	1986-2001	82021 (*P, B)	55-75 HP		n/a	n/a	82003-4	82010
RSX	2002-2006	82021 (*P, B)	55-75 HP		n/a	n/a	82003-4	82010
NSX	1991-2005	82021 (*P, B)	55-75 HP		n/a	n/a	82003-6	82010
CHEVROLET AND GMC								
Holley 4bbl. Applications (sq. flange)	All	82040	100-300 HP		n/a	n/a	n/a	82010
Camaro (SS & Z28)	1993-2002	82235 (*B)	75-175 HP		82070-8	82071-8	n/a	82010
Camaro (V6)	1996-2002	82021 (*P, B)	55-75 HP		82070-1**	82071-1**	n/a	82010
Camaro (V6)	2010-Current	82367 (*B)	55-100 HP		n/a	n/a	n/a	82010
Camaro (V8)	2010-Current	82380 (*B)	75-175 HP		82070-8	82071-8	n/a	82010
Cavalier	1990-2005	82021 (*P, B)	55-75 HP		n/a	n/a	n/a	82010
Cobalt SS	2005-2010	82021 (*P, B)	55-75 HP		n/a	n/a	n/a	82010
Cobalt (non-supercharged)	2005-2010	82021 (*P, B)	55-75 HP		n/a	n/a	n/a	82010
Corvette	1992-Current	82235 (*B)	75-175 HP		82070-8	82071-8	n/a	82010
Gen III (LS1, -2, -6) High Output	All	82087 (*P)	100-250 HP		82070-8	82071-8	n/a	82010
Impala SS (V8)	2006-Current	82235 (*B)	75-175 HP		82070-8	82071-8	n/a	82010
LS Series	All	82195	75-300 HP		82070-8	82071-8	n/a	82010
Silverado Trucks (V8)	1999-Current	82231	75-125 HP		82070-8	82071-8	n/a	82010
Silverado Trucks (V6)	1999-Current	82047	55-125 HP		82070-1**	82071-1**	n/a	82010
Trucks (V6 and V8)	1996-1998	82047	55-125 HP		n/a	n/a	n/a	82010
TrailBlazer SS	2006-2009	82235 (*B)	75-175 HP		82070-8	82071-8	n/a	82010
Diesel Trucks (Street Performance)	2001-Current	82028	35-200 HP		n/a	n/a	n/a	82010
Diesel Trucks (Pro-Street)	2001-Current	82079	50-300 HP		n/a	n/a	n/a	82010
Diesel Trucks (Race)	2001-Current	82044	100-600 HP		n/a	n/a	n/a	82010
CHRYSLER								
Holley 4bbl. Applications (sq. flange)	All	82040	100-300 HP		n/a	n/a	n/a	82010
Neon	2000-2002	82021 (*P, B)	55-75 HP		n/a	n/a	n/a	82010
PT Cruiser	2001-Current	82021 (*P, B)	55-75 HP		n/a	n/a	n/a	82010
300C (5.7L & 6.1L SRT8)	2005-Current	82177	75-125 HP		n/a	n/a	n/a	82010
DODGE								
Holley 4bbl. Applications (sq. flange)	All	82040	100-300 HP		n/a	n/a	n/a	82010
Charger (5.7L & 6.1L SRT8)	2005-Current	82177 (*P)	75-125 HP		n/a	n/a	n/a	82010
Challenger (Hemi)	2008- Current	82322 (*B)	75-175 HP		n/a	n/a	n/a	82010
Neon (SRT4)	2003-2005	82021 (*P, B)	55-75 HP		n/a	n/a	n/a	82010
Neon (Std.)	1995-2005	82021 (*P, B)	55-75 HP		n/a	n/a	82003-4	82010
Dakota (V6 & V8 engines)	1997-Current	82047	55-125 HP		n/a	n/a	n/a	82010
Ram Trucks (5.7L Hemi)	2003-Current	82176 (*P, B)	75-125 HP		n/a	n/a	n/a	82010
Ram Trucks (V6 & Magnum V8)	1994-Current	82047	55-125 HP		n/a	n/a	n/a	82010
Diesel Trucks (Street Performance)	1998-Current	82028	35-200 HP		n/a	n/a	n/a	82010
Diesel Trucks (Pro-Street)	1998-Current	82079	50-300 HP		n/a	n/a	n/a	82010
Diesel Trucks (Race)	1998-Current	82044	100-600 HP		n/a	n/a	n/a	82010
FORD								
Holley 4bbl. Applications (sq. flange)	All	82040	100-300 HP		n/a	n/a	n/a	82010
Focus	2000-Current	82021 (*P, B)	55-75 HP		n/a	n/a	n/a	82010
Mustang (V6 & V8 engines)	1986-1995	82023	75-125 HP		n/a	n/a	n/a	82010
Mustang (V8 engines)	1999-2004	82217	75-175 HP		82070-8	82071-8	n/a	82010
Mustang GT	2005-2010	82034 (*P, B)	75-175 HP		n/a	n/a	n/a	82010
Mustang GT	2005-2010	82242 (*P, B)	100-250 HP		n/a	n/a	n/a	82010
Mustang GT	2011	82390 (*B)	75-175 HP		n/a	n/a	n/a	82010
Mustang (V6 engines)	2005-Current	82307 (*P, B)	55-100 HP		n/a	n/a	n/a	82010
Trucks (V6 & V8 engines)	1986-Current	82047	55-125 HP		see below	see below	n/a	82010
Trucks (4.6L engines)	1999-2004	82240	75-125 HP		82070-8	82071-8	n/a	82010
Trucks (5.4L engines)	1999-2003	82240	75-125 HP		82070-8	82071-8	n/a	82010
Diesel Trucks (Street Performance)	1997-Current	82028	35-200 HP		n/a	n/a	n/a	82010
Diesel Trucks (Pro-Street)	1997-Current	82079	50-300 HP		n/a	n/a	n/a	82010
Diesel Trucks (Race)	1997-Current	82044	100-600 HP		n/a	n/a	n/a	82010

* Denotes that system is also available as Polished (P) and/or Blackout Nitrous System™ (B)
 ** Single unit, must order a quantity of (6)



SPARK PLUGS

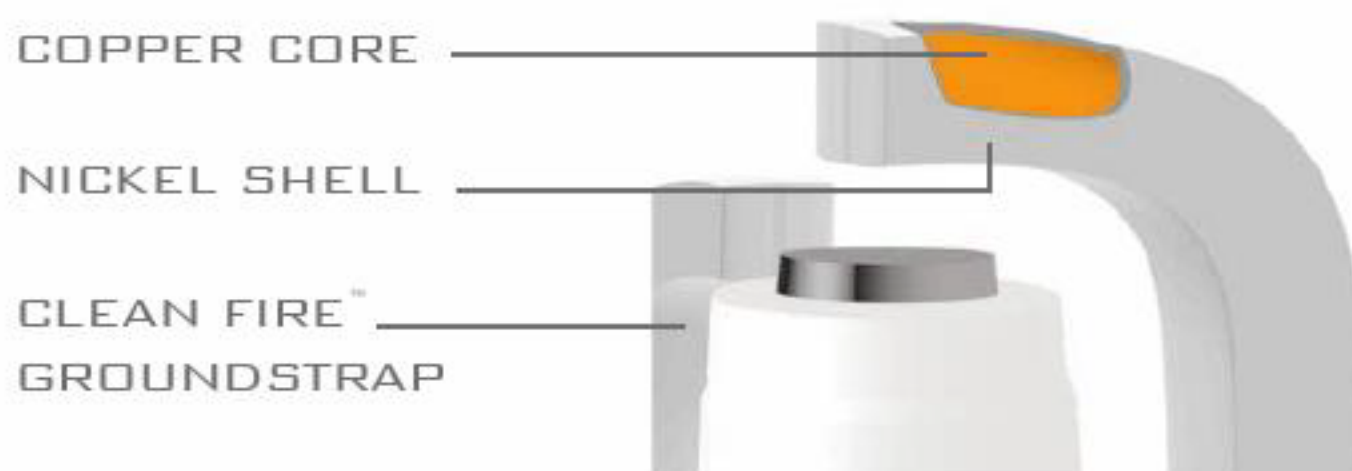
Vehicle	Year	Part #	HP Rating	Nitrous Systems	Power Tune™ Spark Plugs	Power Racer™ Spark Plugs	4 and 6 Cyl. Spark Plugs	Purge Kits
				See Pages 4-27	See Quick Reference Guide Page E	See Quick Reference Guide Page E	See Quick Reference Guide Page F	See Pages 28-29
				Part #	Part #	Part #	Part #	Part #
HONDA								
Civic	1988-Current	82021 (*P, B)	55-75 HP	n/a	n/a	82003-4	82010	
Prelude	1988-2001	82021 (*P, B)	55-75 HP	n/a	n/a	82003-4	82010	
S2000	2000-Current	82021 (*P, B)	55-75 HP	n/a	n/a	82003-4	82010	
Fit	2007-Current	82314	35-55 HP	n/a	n/a	82003-4	82010	
HYUNDAI								
Tiburon 4 cyl.	1997-2008	82021 (*P, B)	55-75 HP	n/a	n/a	82003-4	82010	
Tiburon 6 cyl.	1997-2008	82021 (*P, B)	55-75 HP	n/a	n/a	82003-6	82010	
JEEP								
Grand Cherokee SRT8	2006-Current	82241	75-125 HP	n/a	n/a	n/a	82010	
MAZDA								
Miata/MX-5	1994-Current	82021 (*P, B)	55-75 HP	n/a	n/a	82003-4	82010	
RX7	1986-1995	82021 (*P, B)	55-75 HP	n/a	n/a	n/a	82010	
RX8	2004-Current	82021 (*P, B)	55-75 HP	n/a	n/a	n/a	82010	
MERCURY								
Marauder	2003-2004	82023	75-125 HP	82070-8	82071-8	n/a	82010	
MITSUBISHI								
Eclipse 4 cyl.	1989-1999	82021 (*P, B)	55-75 HP	n/a	n/a	n/a	82010	
Eclipse 6 cyl.	2000-Current	82021 (*P, B)	55-75 HP	n/a	n/a	82003-6	82010	
Lancer Evolution	2003-Current	82021 (*P, B)	55-75 HP	n/a	n/a	82003-4	82010	
NISSAN								
300ZX (Turbo & non-turbo engines)	1989-2000	82194	75-175 HP	n/a	n/a	82003-6	82010	
350Z	2003-2006	82220 (*P)	55-75 HP	n/a	n/a	n/a	82010	
350Z	2007-2009	82238 (*P)	75-100 HP	n/a	n/a	n/a	82010	
Sentra	1991-2001	82021 (*P, B)	55-75 HP	n/a	n/a	82003-4	82010	
Sentra SE-R and SE-R Spec V	2002-Current	82021 (*P, B)	55-75 HP	n/a	n/a	n/a	82010	
PONTIAC								
Firebird	1993-2002	82235	75-175 HP	82070-8	82071-8	n/a	82010	
Grand Prix	1997-2008	82021 (*P, B)	55-75 HP	n/a	n/a	n/a	82010	
Grand Am (6 cyl. engines)	1985-2005	82021 (*P, B)	55-75 HP	82070-1**	82071-1**	n/a	82010	
Grand Am (4 cyl. engines)	1985-2005	82021 (*P, B)	55-75 HP	n/a	n/a	n/a	82010	
GTO	2004-2006	82235	75-175 HP	82070-8	82071-8	n/a	82010	
G8 GT	2008-2009	82326	75-175 HP	82070-8	82071-8	n/a	82010	
G6 (6 cyl. engines)	2005-2009	82021 (*P, B)	55-75 HP	82070-1**	82071-1**	n/a	82010	
Trans Am	1993-2002	82235	75-175 HP	82070-8	82071-8	n/a	82010	
SATURN								
SL/SC	1991-2002	82021 (*P, B)	55-75 HP	n/a	n/a	82003-4	82010	
ION Red-Line	2004-2007	82021 (*P, B)	55-75 HP	n/a	n/a	82003-4	82010	
SCION								
tC	2005-Current	82321 (*B)	55-75 HP	n/a	n/a	82003-4	82010	
SUBARU								
WRX / Sti	2002-Current	82021 (*P, B)	55-75 HP	n/a	n/a	82003-4	82010	
TOYOTA								
Celica	1990-2005	82021 (*P, B)	55-75 HP	n/a	n/a	82003-4	82010	
MR2	1985-2005	82021 (*P, B)	55-75 HP	n/a	n/a	82003-4	82010	
Supra	1986-1998	82021 (*P, B)	55-75 HP	n/a	n/a	82003-6	82010	
VOLKSWAGEN								
Golf/GTI	1993-Current	82021 (*P, B)	55-75 HP	n/a	n/a	82003-4	82010	
Jetta	1993-Current	82021 (*P, B)	55-75 HP	n/a	n/a	82003-4	82010	

* Denotes that system is also available as Polished (P) and/or Blackout Nitrous System™ (B)
 ** Single unit, must order a quantity of (6)

SPARK PLUGS

ZEX™ engineers realized early on that factory style and conventional performance spark plugs are very prone to detonation because they rely on a very hot “heat range” to keep them from fouling. The factory plugs’ high heat range and very long ground strap retain too much heat from the combustion chamber when using nitrous or under boost. This overheating causes the spark plug ground strap and center electrode to turn into a “glow plug” during just a few seconds of heavy engine load. Once the plug begins to over-heat, air and fuel in the combustion chamber tend to pre-ignite and detonate, causing engine damage. ZEX™ is the only nitrous system manufacturer with specific spark plugs manufactured for the unique requirements of nitrous and forced induction engines.

Special heat range spark plugs for nitrous applications - also perform by design with naturally aspirated setups.



POWER TUNE™ & POWER RACER™

Igniter Core™ Spark Plugs

You've heard the hype about platinum and iridium, and while these materials are durable, there's a performance trade-off due to their high electrical and thermal resistance. ZEX™ Igniter Core™ Technology uses copper, surrounded by a durable nickel shell, to conduct electricity and heat over 5 times better than platinum and almost 3 times better than iridium. The result is more horsepower producing spark energy and greater detonation resistance than platinum or iridium can deliver. Another groundbreaking development is Clean Fire™ Technology. It uses the spark from three additional ground straps to super-clean the center electrode. This burns off excess carbon and ensures you get maximum ignition power and superior resistance to fouling. Two different types of plugs have been developed with optimized heat ranges for your specific modifications and power levels. For engines with bolt-on performance parts and computer tuning, up to 400 HP, our Power Tune™ (One Step Colder) Spark Plug is for you. If you have an engine with a nitrous system, blower or turbo, our Power Racer™ (Two Steps Colder) Spark Plug will maximize performance in engines up to 700 HP.

VEHICLE	YEAR	ENGINE	POWER TUNE™ PART #	POWER RACER™ PART #
Chevrolet				
Silverado	1996-2003	4.8L, 5.0L, 5.3L, 5.7L, 6.0L, 7.4L, 8.1L	82070-8	82071-8
Camaro Z28 & SS	1993-2002	5.7L	82070-8	82071-8
Corvette	1990-2003	5.7L	82070-8	82071-8
Impala SS	1994-1996	5.7L	82070-8	82071-8
Camaro (V6)	1996-2002	3.8L	82070-1*	82071-1*
Impala (V6)	2000-Current	3.4L, 3.8L	82070-1*	82071-1*
Silverado (V6)	1999-2006	4.3L	82070-1*	82071-1*
Ford				
F-150	1997-2004	4.6L	82070-8	82071-8
F-150	1997-2003	5.4L	82070-8	82071-8
Lightning	1993-1995	5.8L	82070-8	82071-8
Lightning - Supercharged	1999-2004	5.4L		82071-8
Mustang GT	1996-2004	4.6L	82070-8	82071-8
Mustang Cobra	1993-2001	4.6L, 5.0L	82070-8	82071-8
Mustang Cobra - Supercharged	2003-2004	4.6L		82071-8
Mustang Mach 1	2003-2004	4.6L	82070-8	82071-8
Pontiac				
Firebird Formula & Trans Am	1993-2002	5.7L	82070-8	82071-8
Grand Am (V6)	1985-2005	3.0L, 3.1L, 3.3L, 3.4L	82070-1*	82071-1*
G6 (V6)	2005-Current	3.5L	82070-1*	82071-1*

* Single unit, must order a quantity of (6)





Enhanced illustration of triple-ground, super-range electrodes & projected nose

HYPERFORMANCE™

Power Adder Nitrous & Turbo Spark Plugs

ZEX™ Hyperperformance 4 Cylinder & 6 Cylinder Spark Plugs™ have an optimal heat range and ground strap designed for nitrous, turbo and supercharged engines that maximize safety and performance. Durable nickel electrodes with copper core centers stand up to extreme nitrous and boost pressures, while the triple ground strap is designed for optimum combustion efficiency. These are pre-gapped for an easy, drop-in installation and are available for both 4 and 6 cylinder engines.

VEHICLE	YEAR	PART #
Acura		
CL 2.2 & 2.3	1997-1999	82003-4
CL 3.0 & 3.2	1997-2003	82003-6
Integra RS, LS, GS & GSR	1986-2001	82003-4
Legend	1991-1996	82003-6
NSX	1995-2005	82003-6
RSX	2003-2006	82003-4
Honda		
Accord 4 Cyl.	1990-2007	82003-4
Accord 6 Cyl.	1994-2007	82003-6
CRX	1984-1991	82003-4
Civic	1992-Current	82003-4
Del Sol	1993-1997	82003-4
Prelude	1988-2002	82003-4
S2000	2000-Current	82003-4
Hyundai		
Tiburon 4 Cyl.	1997-Current	82003-4
Tiburon 6 Cyl.	2002-Current	82003-6
Infiniti		
G20	1991-2002	82003-4
Lexus		
IS300	2001-2005	82003-6

* Sets of (-4) & (-6) also available as single units (-1)

VEHICLE	YEAR	PART #
Mazda		
Miata	1990-2005	82003-4
MX-6	1993-2002	82003-6
Mitsubishi		
3000 GT	1991-1999	82003-6
Eclipse 4 Cyl.	2000-2005	82003-4
Eclipse 6 Cyl.	2000-Current	82003-6
EVO	2003-Current	82003-4
Nissan		
Maxima	1985-2002	82003-6
Sentra SE, SE-R	1991-2001	82003-4
240 SX	1989-1998	82003-4
300 ZX	1984-1996	82003-6
Saturn		
SL/SC	1991-2002	82003-4
Subaru		
WRX (Non-STI)	2002-2005	82003-4
Toyota		
Celica	1990-2005	82003-4
Supra Turbo	1987-1998	82003-6
MR2	1985-2005	82003-4
Volkswagen		
Golf GTI	1993-2007	82003-4
Jetta	1993-Current	82003-4
Beetle	1998-Current	82003-4



Triple Fire™ Spark Plugs

Igniter Core™ & Clean Fire™ Technology

You've upgraded your engine with a set of high performance cylinder heads... now what spark plugs do you use? ZEX™ has done the homework for you by engineering a line of premium spark plugs that feature several advanced technologies to maximize your ignition performance and horsepower. First, Igniter Core™ Technology uses a center electrode of pure copper surrounded by a high purity nickel shell for durability to conduct electricity and heat. Second, Clean Fire™ Technology uses the spark from all three ground straps to aid in super-cleaning the center electrode to burn off excess carbon. For any engine equipped with after-market high performance cylinder heads, Triple Fire™ Spark Plugs are the optimum choice for naturally aspirated street performance.



All listings refer to aluminum cylinder heads, except where noted.

CYLINDER HEAD

SPARK PLUG PART# (SET OF 8)

CYLINDER HEAD	SPARK PLUG PART# (SET OF 8)
AFR	
Street Head, Small Block Chevrolet	82003-8
Race Head, Small Block Chevrolet	82003-8
LT1 & LT4, Small Block Chevrolet	82003-8
Oval Port, Big Block Chevrolet	82003-8
Rectangular Port, Big Block Chevrolet	82003-8
Street Head, Small Block Ford	82003-8
Race Head, Small Block	82003-8
Dart	
PRO-1, Small Block Chevrolet	82003-8
Iron Eagle, Big Block Chevrolet*	82003-8
PRO-1, Big Block Chevrolet	82003-8
Race Series, Big Block Chevrolet	82003-8
PRO-1, Small Block Ford	82003-8
Edelbrock	
Performer, Small Block Chevrolet	82003-8
Performer RPM, Big Block Chevrolet	82003-8
Victor Jr. 23°, Small Block Chevrolet	82003-8
Performer 454-O, Big Block Chevrolet	82003-8
Performer RPM 454-O, Big Block Chevrolet	82003-8
Performer RPM 454-R, Big Block Chevrolet	82003-8
Victor Jr. 24° Rectangle Port, Big Block Chevrolet	82003-8
Performer, Big Block Ford	82003-8
Performer RPM, Small Block Ford	82003-8
Performer 5.0/5.8L, Small Block Ford	82003-8
Victor Jr., Small Block Ford	82003-8
Performer RPM FE, Big Block Ford	82003-8
Performer RPM 460, Big Block Ford	82003-8
Performer RPM 460 CJ, Big Block Ford	82003-8
Performer RPM, Small Block Chrysler	82003-8
Performer RPM 340, Small Block Chrysler	82003-8
Performer RPM Magnum, Small Block Chrysler	82003-8
Performer RPM 440, Big Block Chrysler	82003-8
Performer, AMC	82003-8
Performer RPM, AMC	82003-8

*Cast iron cylinder head

CYLINDER HEAD

SPARK PLUG PART# (SET OF 8)

CYLINDER HEAD	SPARK PLUG PART# (SET OF 8)
Edelbrock Cont.	
Performer RPM, Oldsmobile	82003-8
Performer, Pontiac	82003-8
Performer RPM, Pontiac	82003-8
440-EZ, SR, 1 & C, Big Block Chrysler	82003-8
360-1 & 360-2, Big Block Chrysler	82003-8
426-1, Hemi Chrysler	82003-8
401-SR & 1, AMC	82003-8
RHS	
Pro Action, Small Block Chevrolet	82003-8
Pro Action, Big Block Chevrolet	82003-8
Pro Action, Big Block Chevrolet*	82003-8
Pro Elite, Gen III General Motors	82070-8
Pro Action, Small Block Ford	82003-8
TFS	
R-Series 215, Small Block Chevrolet	82003-8
23° 175, Small Block Chevrolet	82003-8
18°, Small Block Chevrolet	82003-8
LT1, Small Block Chevrolet	82003-8
Oval Port, Big Block Chevrolet	82003-8
R-Series, Big Block Chevrolet	82003-8
Race Series, Big Block Chevrolet	82003-8
R-Series, Big Block Ford	82003-8
Twisted Wedge Heads, Small Block Ford	82003-8
Track Heat, Small Block Ford	82003-8
High Port, Small Block Ford	82003-8
A 460, Big Block Ford	82003-8
429/460 Street, Big Block Ford	82003-8
World Products	
Motown Lite, Small Block Chevrolet	82003-8
Merlin III, Big Block Chevrolet	82003-8
Windsor Jr., Small Block Ford	82003-8
Windsor Sr., Small Block Ford	82003-8



SAFE SHOT

35 HP IN 60 MINUTES!



#82357

NEW

Safe Shot Nitrous System & Upgrade Kit

The Safe Shot Nitrous System from ZEX™ offers an affordable option for gaining 15-35 instant horsepower, and it includes everything necessary to install the entire system in less than an hour. The only additional part needed is a hand-held programmer, which is used to increase fuel enrichment for safely operating at the upper limits of the horsepower range.

For those who already have this kit but are ready to upgrade to more serious horsepower, ZEX™ offers an expansion kit that turns the Safe Shot into a full-blown wet ZEX™ Nitrous System capable of safely adding 55-175 horsepower.

The only “upgradeable” entry-level nitrous system in the industry, the Safe Shot is guaranteed to surprise both you and your competition.

- Base Safe Shot System includes stainless steel hoses, high-flow bottle valves, solenoids & 5 lb. black powder coated bottle
- Readily accepts all popular accessories like purge kits & remote bottle openers
- Upgrade kit includes high-flow fuel solenoid, wet nitrous nozzle, tuning jets, stainless steel braided lines & other necessary components

DESCRIPTION	PART #
Safe Shot Nitrous System (Blackout)	82357
Safe Shot Nitrous Upgrade Kit	82358

ADDS 175 EXTRA HP

#82358



Diesel Nitrous System

The ZEX™ Diesel Nitrous System adds power with no additional tuning but really comes alive when used in tandem with other diesel engine performance components, such as power programmers and high-flow exhaust systems. By more thoroughly burning the increased volume of diesel fuel entering the engine, the ZEX™ Diesel Nitrous System boosts power, reduces exhaust gas temperatures and cools the air inlet charge for any EFI diesel engine.

- Power is adjustable from 35-200 additional HP
- Reduces turbo lag & greatly cools both inlet air temps & exhaust temps for additional power & engine safety
- Includes 10 lb. nitrous bottle, bottle brackets, nitrous solenoid, electronic throttle activation switch & all necessary plumbing and electrical connectors



#82028

DESCRIPTION	PART #
Diesel Nitrous System (Purple)	82028
Diesel Nitrous System (Polished)	82028P
Diesel Blackout Nitrous System™	82028B

RECOMMENDED ACCESSORIES



Nitrous Purge Kit (Part #82010)	See page 28
Liquid Filled Pressure Gauge (Part #82341)	See page 30
Adj. Pressure Controlled Nitrous Bottle Heater (Part #82369)	See page 31
Traction Control Window Switch (Part #82085)	See page 31
◀ Remote Bottle Valve Opener (Part #82009)	See page 32
Black Velvet Bottle Bag (Part #82000B)	See page 34



Pro Street Diesel Nitrous System

The Pro Street Diesel Nitrous System is engineered specifically to take advantage of the increased fuel delivery, oversized injectors and high boost capability of today's high performance EFI diesel engines. This kit features a huge nitrous solenoid & large -4AN nozzle feed line. This high-flow hardware lets you select jets that will add from 50-300 additional horsepower. To properly time and control the nitrous injection, a boost pressure switch is also used in tandem with the electronic wide open throttle switch.

- 50-300 HP nitrous shot capability
- Activated electronically only at wide open throttle using the ZEX™ patented TPS switch
- Timing of the nitrous injection is set by a user-controlled, fully adjustable boost switch



#82079B

DESCRIPTION	PART #
Pro Street Diesel Nitrous System (Purple)	82079
Pro Street Diesel Blackout Nitrous System™	82079B

Race Diesel Nitrous System

Our ultimate diesel nitrous system uses a fully adjustable boost switch to time the nitrous activation, two separate nitrous stages and twin 10 lb. cylinders. It's our top-of-the-line power producer, capable of providing 50-600 additional horsepower to any EFI diesel engine. This system will help you burn all the diesel fuel you can throw at it.

- Capable of providing between 50-600 HP
- Reduced exhaust gas & air inlet temperatures for maximum power & engine safety
- Lets you add power in two separate, independently controlled stages to control tire spin



#82044

DESCRIPTION	PART #
Race Diesel Nitrous System (Purple)	82044
Race Diesel Blackout Nitrous System™	82044B

EFI Sportbike Dry Nitrous System

The ZEX™ EFI Sportbike Dry Nitrous System is the most complete nitrous system you can buy for your EFI-equipped motorcycle. The ZEX™ kit incorporates an advanced electronic throttle position sensor switch that activates at wide open throttle. In this way, the ZEX™ kit lets you easily control the nitrous "hit" to help manage the power if the front tire lifts.

- Adjustable from 30-60 additional HP
- Each system includes a polished 2 lb. bottle, high-flow nitrous solenoid, straight-shot nitrous nozzle, electronic TPS activation switch & stainless steel braided lines
- Fits all EFI-equipped sportbikes



#82080

DESCRIPTION	PART #
EFI Sportbike Dry Nitrous System (Polished)	82080

RECOMMENDED ACCESSORIES



Nitrous Purge Kit (Part #82010)	See page 28
Liquid Filled Pressure Gauge (Part #82341)	See page 30
Adj. Pressure Controlled Nitrous Bottle Heater (Part #82369)	See page 31
Traction Control Window Switch (Part #82085)	See page 31
Remote Bottle Valve Opener (Part #82009)	See page 32
◀ Black Velvet Bottle Bag (Part #82000B)	See page 34



MOTORCYCLE

1999-2007 Hayabusa Dry Nitrous System

The ZEX™ Hayabusa Dry Nitrous System is the only kit of its kind on the market today. Easy-to-install in only a few hours, this kit comes with everything you need, including a custom bracket that hides the nitrous bottle under the Hayabusa's "hump". The kit includes our patented electronic TPS switch that activates the nitrous only at wide open throttle and gives you much better control of the nitrous "hit" compared to the more common horn button activation.

- Add anywhere from 30-60 additional HP
- Custom designed mounting bracket hides nitrous bottle under the Hayabusa's "hump"
- Each system includes a polished 2 lb. bottle, custom Hayabusa bottle bracket, high-flow nitrous solenoid, straight-shot nitrous nozzle, electronic TPS activation switch & stainless steel braided lines



#82075

DESCRIPTION	PART #
1999-2007 Hayabusa Dry Nitrous System (Polished)	82075

EFI Sportbike Direct Port Nitrous System

The ZEX™ EFI Sportbike Direct Port Nitrous System is the most advanced direct port nitrous system you can buy for your EFI-equipped motorcycle. Unlike other nitrous kits that require you to fumble with the horn button to engage the system, our patented electronic TPS activation reliably and precisely activates at wide open throttle for perfect nitrous control.

- Tunable from 50-200 additional HP
- Includes a polished 2 lb. bottle, high-flow nitrous & fuel solenoids, four nitrous nozzles, electronic TPS activation switch & stainless steel braided lines
- Fits all 4 cyl. EFI-equipped sportbikes



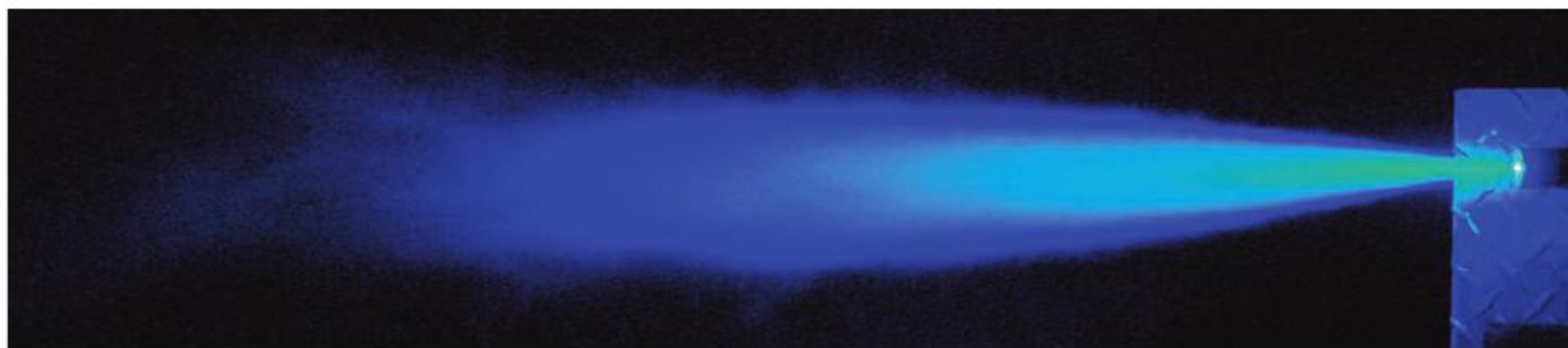
#82239

DESCRIPTION	PART #
EFI Sportbike Direct Port Nitrous System (Polished)	82239

ACCESSORIES

NITROUS PURGE SYSTEMS

ZEX™ Nitrous Purge Kits ensure instant nitrous power off the line by clearing the delivery lines of unwanted vapor, putting pure liquid nitrous at the nitrous solenoid, where you need it most.



Actual purge results from Blue LED Purge Kit.

Nitrous Purge Kits

- Purge nitrous lines of vapor & ensure instant nitrous power as soon as kit activates
- Available for both -4AN & -6AN nitrous systems
- Dual outlet kit delivers two six-foot nitrous purge clouds in a “V” pattern
- Compatible with any manufacturer’s nitrous system

DESCRIPTION	PART #
-4AN Nitrous Purge Kit	82010
-6AN Nitrous Purge Kit	82315
-4AN Dual Outlet Purge Kit	82175



#82010

Show Purge Kits

- Complete kit enables you to purge a 15 ft. cloud of colored nitrous into the air
- Gives the look of a complete nitrous system without the installation hassles
- Includes the ZEX™ Purge-Cloud LED in red, green or blue

DESCRIPTION	PART #
Show Purge Kit w/ Purple Bottle (Red LED)	82270R
Show Purge Kit w/ Purple Bottle (Green LED)	82270G
Show Purge Kit w/ Purple Bottle (Blue LED)	82270B
Show Purge Kit w/ Polished Bottle (Red LED)	82270RP
Show Purge Kit w/ Polished Bottle (Green LED)	82270GP
Show Purge Kit w/ Polished Bottle (Blue LED)	82270BP



#82270R



LED Purge Kits

- Ensures instant nitrous power by clearing delivery lines of any unwanted vapor
- Includes complete nitrous purge kit & a ZEX™ Purge-Cloud LED Kit (Purge-Cloud LED Kit available for individual purchase)
- LED light is available in red, green or blue & is powerful enough to illuminate a 15 ft. nitrous cloud

DESCRIPTION	PART #
LED Purge Kit (Red LED)	82010R
LED Purge Kit (Green LED)	82010G
LED Purge Kit (Blue LED)	82010B
Purge-Cloud Light Kit (Red LED)	82170R
Purge-Cloud Light Kit (Green LED)	82170G
Purge-Cloud Light Kit (Blue LED)	82170B



Machine Gun Purge Kits

- Pulses any purge kit on the market with a “machine gun” blast of noise
- Includes revolutionary Purge-Cloud LED light for strobe light effect
- Red, green & blue colors available
- ZEX™ laser-etched LED housing

DESCRIPTION	PART #
Machine Gun Purge Kit (Red LED)	82370R
Machine Gun Purge Kit (Green LED)	82370G
Machine Gun Purge Kit (Blue LED)	82370B

Nitrous Pressure Gauge Kits

- Allows precise monitoring of nitrous bottle pressure
- Superior quality gauge designed for accuracy and long life
- Anodized for a high-quality competition look

DESCRIPTION	PART #
-4AN Nitrous Pressure Gauge Kit	82005
-6AN Nitrous Pressure Gauge Kit	82343



NEW

Liquid Filled Pressure Gauge Kits

- Accurate bottle pressure monitoring
- Internal components are protected from the severe vibration often found in race & serious street/strip vehicles
- Specifically designed to fit any manufacturer's nitrous system
- Comes with inline adapter for -4AN & -6AN delivery lines
- Kit includes 0-1500 psi range gauge

DESCRIPTION	PART #
-4AN Liquid Filled Pressure Gauge Kit	82341
-6AN Liquid Filled Pressure Gauge Kit	82342

Programmable TPS Switch

- ZEX™ patented TPS activation circuit presented in an easy-to-install, standalone unit
- Switch allows anyone with non-ZEX™ nitrous system to activate nitrous at wide open throttle
- Fully self-programmable
- Perfect for throttle-by-wire vehicles

DESCRIPTION	PART #
Programmable TPS Switch	82108





Nitrous Bottle Heaters

Heating your nitrous bottle to achieve 900-1000 psi is the key to ultimate nitrous system performance.

- Calibrated for specific pressure range, max HP & consistent nitrous flow for engine safety
- Thermostatically controlled to ensure optimum bottle temperature is reached & maintained
- Adjustable Nitrous Bottle Heater (Part #82369) is pressure controlled to safely maintain ideal nitrous pressure
- Velcro straps for fast & easy installation on the bottle
- Electrical components are pre-assembled & molded into heaters for ease of installation
- Plug-in version (Part #82045) available; no wires to hook-up, simply plug into your cigarette lighter or power port



#82045

#82006

DESCRIPTION	PART #
Wire-In Nitrous Bottle Heater	82006
Plug-In Nitrous Bottle Heater	82045
Adjustable Pressure Controlled Nitrous Bottle Heater	82369

NEW

#82369



Traction Control Window Switch

- Allows user to select the RPM range allowing nitrous system to operate in both lower & upper RPM limits
- Allows you to select gear in which nitrous starts spraying
- Fully programmable & adjustable up to 20,000 RPM
- Perfect for traction limited, street tire type vehicles where spraying too soon results in loss of traction



#82085

DESCRIPTION	PART #
Traction Control Window Switch	82085

Remote Bottle Valve Opener

- Allows you to open the valve from the driver's seat at a moment's notice
- Manufactured from anodized billet aluminum
- Modular motor assembly provides years of trouble free use
- ZEX™ design ensures that nitrous flow is not affected by its use

DESCRIPTION	PART #
Remote Bottle Valve Opener	82009



Safety Blow Down Kits

- Safely releases nitrous pressure in the event the bottle becomes over-filled or over-heated
- Required by racetracks

DESCRIPTION	PART #
Universal Kit (Fits All Valves)	82099
Pro Safety Blow Down Kit	82345
For Valves with Internally Threaded Safety Port	82110
For Valves with Externally Threaded Safety Port	82111
#1 Replacement Blow Off Burst Disc for Internally Threaded Safety Port	82117
#2 Replacement Blow Off Burst Disc for Externally Threaded Safety Port	82118
Gasket for #1 Blow Off Burst Disc	NS6693
Gasket for #2 Blow Off Burst Disc	82119
Internally Threaded Safety Port	NS6633
Externally Threaded Safety Port	NS6600



Internally Threaded Safety Port
#NS6633



Externally Threaded Safety Port
#NS6600

Fuel Flow Check Tool

- Accurately sets flowing fuel pressure on any carbureted nitrous system
- Includes lab quality, liquid filled, fuel pressure gauge; accurate to within half a percentage point
- Includes calibrated flow jets for nitrous systems jetted from 100 to over 400 HP
- Compatible with all carbureted style nitrous systems

DESCRIPTION	PART #
Fuel Flow Check Tool	82244





#82064



Add-A-Stage Nitrous Kit

- Easy-to-install kit adds a second stage of nitrous to any manufacturer's single stage EFI nitrous system
- Faster than single stage systems because nitrous is added in two separately controlled stages
- Operated by a push button switch for ease of control
- Jets are included for adding an extra 50-250 HP

DESCRIPTION

PART #

Add-A-Stage Nitrous Kit

82064

Racer's Tuning Kit

- Kit includes all the accessories needed to optimize the performance of your nitrous system
- Kit includes a purge kit, bottle pressure gauge, bottle heater and a safety blow down kit

#82001



DESCRIPTION

PART #

Racer's Tuning Kit

82001

#82121



Nitrous Fill Station

- Allows you to accurately and safely fill virtually any kind of nitrous bottle
- Has an incredibly quiet & efficient pump
- Includes high pressure lines, fittings, adapters & filters necessary to properly set-up a refill station

DESCRIPTION

PART #

Nitrous Fill Station

82121

Booster Fuel Pump Kit

- Fuel system upgrade provides the potential to boost your fuel system flow capacity up to 650 HP, even on high fuel pressure turbo, supercharged & nitrous applications
- Installed in-line, so no dropping your fuel tank
- Kit includes pump, all hoses, hose clamps, wiring, etc. necessary for a clean & easy install
- For return-style fuel systems only



DESCRIPTION

PART #

Booster Fuel Pump Kit

82020

#82020



Nitrous Bottles

- Standard nitrous bottles have a high flow bottle valve, good for applications up to 300 HP
- Race bottles are equipped with race-flow bottle valve & high flow siphon tube for applications up to 500+ HP
- All bottles come with a ZEX™ bottle valve
- All bottles have an incredible show quality shine

DESCRIPTION	PART #
2 lb. Polished Bottle	82000PMB
5 lb. Blackout Bottle (dimensions on pg.23)	82355
10 lb. Purple Bottle	82000
10 lb. Polished Bottle	82000P
10 lb. Blackout Bottle	82340B
10 lb. Purple Race Bottle	82323
10 lb. Blackout Race Bottle	82323B
15 lb. Purple Race Bottle	82243



Maximizer Kits

- Doubles nitrous system capacity by adding an extra nitrous bottle to vehicle
- Includes everything you need; a 10 lb. nitrous bottle, padded bottle brackets, adapter fittings & high pressure braided lines
- Never run out of nitrous when you need it the most

DESCRIPTION	PART #
Maximizer Kit (Purple Bottle)	82100
Maximizer Kit (Polished Bottle)	82100P

Bottle Accessories

ZEX™ doesn't just sell complete nitrous systems; we also sell all of the small parts you need to keep running. Items such as bottle brackets, gaskets, bags and bottle outlet fittings are available for individual purchase.



DESCRIPTION	PART #
Black Velvet Bottle Bag	82000B
Nitrous Bottle Bracket Kit	82013
2 lb. Nitrous Bottle Bracket Kit	NS6744-1
Billet Nitrous Bottle Bracket Kit	82171
326 CGA Chrome Bottle Nut	NS6583
-4AN 326 CGA Outlet Fitting	NS6502
660 CGA Outlet Gasket	NS6717
-6AN Bottle Valve Fitting	NS6702A
660 CGA to -4AN Bottle Adapter Fitting	82134



*Bottles not included



COMPONENTS

Nitrous Management Units

Wet Nitrous Management Unit

Patent #: 6,234,155



PART # 82008

Dry Nitrous Management Unit

Patent #: 5,967,099
6,105,563
6,234,155



PART # 82007

Nozzles

Wet Nitrous Nozzle

Patent #: 7,147,173



PART # 82025

Dry Nitrous Nozzle



PART # NS6550

Direct Port Nitrous Nozzle

Patent #: 7,147,173



PART # 82155

Nozzle Jet Holder



PART # NS6652

Plates

Square Flange Perimeter Plate w/ Fitted Carb Gaskets



PART # 82043 (PURPLE)
82043B (BLACK)

Dominator Perimeter Plate w/ Fitted Carb Gaskets



PART # 82072 (PURPLE)
82072B (BLACK)

LS Series Perimeter Plate Conversion Kit



PART # 82039 (BLACK)

Fitted Carb Gasket for #82043 Plate



PART # 82042

Fitted Carb Gasket for #82072 Plate



PART # 82049DPG

Electrical Components

Remote Bottle Valve Opener Switch



PART #
82262SW

Boost Activated Switch

- Spool turbo system
- Adjustable from 2-24 PSI
- Small size for easy install



PART #
82081

Wide Open Throttle Micro Switch



PART #
NS6645

Aircraft Switch & Cover



PART #
82002

Switch Cover



PART #
NS6545

Nitrous Push Button



PART #
NS6534

Mini Relay

- Rated to 20 amps continuous
- Easy-to-mount compact size
- Mounting tab for easy installation



PART #
NS6552

Tools

1/16 NPT-27 Tap



PART #
NS6584

1/8 NPT-27 Tap



PART #
NS6684



Nitrous/Fuel Jets



PART #
NS6588

- Precision-machined jets from ZEX™ are used to easily adjust both nitrous and fuel flow
- Special internal taper minimizes turbulence, resulting in very consistent flow & power
- Packaged individually for ease of ordering

PART #	DIAMETER
NS6501M	.010
NS6501N	.011
NS6501O	.013
NS6501	.014
NS6501J	.016
NS6500M	.017
NS6500N	.019
NS6500O	.021
NS6501H	.024
NS6501K	.025
NS6500P	.026
NS6501G	.028
NS6500Q	.030
NS6500A	.032
NS6501F	.033
NS6500B	.034
NS6500C	.035
NS6500D	.036
NS6500E	.038
NS6500F	.040
NS6500G	.043
NS6500H	.046
NS6500I	.052
NS6500S	.053
NS6500R	.054
NS6501E	.056
NS6501D	.057
NS6500T	.062
NS6500U	.064
NS6501C	.067
NS6500V	.072
NS6500J	.073
NS6500W	.074
NS6501B	.076
NS6500K	.078
NS6501L	.080
NS6500L	.082
NS6500X	.083
NS6500Y	.088
NS6501A	.105
NS6500Z	.125

NITROUS HORSEPOWER JET CHART

EFI WET SYSTEM	4 CYL.		6 CYL.		8 CYL.	
	FUEL	N2O	FUEL	N2O	FUEL	N2O
55 HP	17	32	17	32	19	32
65 HP	19	36	19	36	21	36
75 HP	21	40	21	40	26	40
100 HP	26	46	26	46	30	46
125 HP	30	54	30	54	34	54
150 HP	38	67	38	67	38	67
175 HP	43	83	43	83	43	83

Note #1: Fuel pump upgrade required. Use ZEX™ Booster Fuel Pump Kit #82020 for return style fuel system.

MASTER JET PACK

#82199



- Includes two nitrous/fuel jets of almost every size offered by ZEX™
- 74 individual jets; 37 unique sizes from .125 down to .014
- Comes in two durable, hard plastic storage cases with labels & is subdivided into individual compartments

DESCRIPTION	PART #
Master Jet Pack	82199

Fittings

FUEL LINE ADAPTERS

Ford Fuel Rail Adapter Kit
(1999-2004)
2 Valve Modular Engines



PART #
82236

Ford Fuel Rail Adapter Kit
(2005-2010)
3 Valve Modular Engines



PART #
82035

Charger/Magnum
Fuel Line Adapter Kit
(2005-Current)
EFI Hemi Engines



PART #
82138

Nissan 350Z
Fuel Line Adapter Kit
(2007-2009)



PART #
82309

Hemi Truck
Fuel Line Adapter



PART #
82139

BULKHEAD FITTINGS

1/16 NPT Bulkhead Fitting



PART #
NS6506

Backing Nut For 1/16
NPT Bulkhead Fitting



PART #
NS6508

1/8 NPT Bulkhead Fitting
w/ Backing Nut



PART #
NS6687

DISTRIBUTION BLOCKS

1 In 4 Out,
1/8 NPT Distribution Block



PART #
NS6703A

1 In 4 Out,
1/8 NPT Distribution Block



PART #
NS6704B

8-32 x 1/2 In. Cap Screw For
Distribution Block



PART #
NS6596



Fittings

FITTINGS

-3AN To 1/8 NPT, Straight



PART #
NS6570

-4AN To 1/8 NPT, Straight



PART #
NS6588

-4AN To 1/8 NPT, 90 Deg.



PART #
NS6686

-4AN To 1/16 NPT, Straight



PART #
NS6688

1/8 NPT To
1/4 NPT Reducer



PART #
NS6578

-4AN To 1/4 NPT w/ Filter
For Fuel & Nitrous



PART #
NS6579

3/16 Diam. x 12 In. Long
Steel Purge Tube



PART #
NS6533

90 Deg., -4AN Swivel Adapter



PART #
NS6576

T-FITTINGS

-4AN Swivel Branch T-Fitting



PART #
NS6560

-4AN Swivel T-Fitting



PART #
NS6599

-4AN Aluminum Inline T-Fitting
w/ Dual 1/8 NPT Outlets



PART #
82104

.350 Hose Barb, 1/8 NPT
Outlet Fuel T-Fitting



PART #
NS6685

Steel Braided Hoses

- Teflon-lined hose assemblies with stainless steel over-braid for strength & abrasion resistance
- Hose assemblies come with straight swivel ends in -3AN and -4AN sizes



-3AN	DESCRIPTION	PART #
	4 ft., Purple Ends	NS6595
	3 ft., Purple Ends	NS6670
	2 ft., .106 ID, Purple Ends	NS6613A
	2 ft., .086 ID, Red Ends	NS6614A
	2 ft., Purple Ends	NS6568
	12 in., -3AN Purple Ends w/ -4AN hose, 1/8 NPT	NS6621
	7.5 in., .086 ID, Purple Ends, -3AN x 1/8 NPT	NS6615A
	7.5 in., .040 ID, Red Ends, -3AN x 1/8 NPT	NS6616A

-4AN	DESCRIPTION	PART #
	18 ft., Purple Ends	NS6669
	16 ft., Purple Ends	NS6569
	14 ft., Purple Ends	NS6671
	4 ft., Purple Ends	NS6597
	3 ft., Purple Ends	NS6612
	2 ft., Purple Ends	NS6668
	1 ft., Purple Ends	NS6598

Solenoids

PART #
NS6741



Race Nitrous Solenoid

- .156 Orifice
- 1/4 NPT inlet
- 1/8 NPT bottom outlet
- 17.25 Amp draw

PART #
NS6642



Pro Nitrous Solenoid

- .110 Orifice
- 1/4 NPT inlet
- 1/8 NPT outlet
- 16.7 Amp draw

PART #
NS6641



Pro Fuel Solenoid

- .156 Orifice
- 1/4 NPT inlet
- 1/8 NPT outlet
- 1.8 Amp draw

PART #
NS6521



Hi-Flow Purge Solenoid

- Comes with internal screen filter
- 1/8 NPT inlet
- 1/8 NPT outlet
- 1.8 Amp draw

SOLENOID ACCESSORIES



Solenoid/WOT
Switch Bracket

PART #
82105



Heavy Duty
Solenoid Bracket

PART #
82219



10-32 Solenoid
Bracket Screw

PART #
NS6522



MERCHANDISE & APPAREL



“Win With ZEX™” T-Shirt

Show how you have made your car into a winner with this Gildan ultra cotton heavy-weight, 100% preshrunk white t-shirt. The shirt features a small ZEX™ nitrous oxide logo on the front left chest and a graffiti style outline of a nitrous bottle with the slogan “Win With ZEX” on the back. Available in sizes M-XXL.

DESCRIPTION	PART #
“Win With ZEX™” T-Shirt	Z108-Size (M-XXL)



Purple ZEX™ Racing T-Shirt

This best selling t-shirt from ZEX™ is a Gildan 100% ultra cotton purple t-shirt with the slogan “Safer, Smarter, Faster” across the front and a nitrous bottle with the ZEX™ racing logo on the back. Available in sizes M-XXL.

DESCRIPTION	PART #
Purple ZEX™ Racing T-Shirt	Z109-Size (M-XXL)



Banners & Decals

ZEX™ decals and banners dress up your shop or tool box and are made of durable fabric to last for years. They are the perfect addition to any racer's collection.

DESCRIPTION	PART #
Banner (3'x8')	ZEX308
Small Decal (6")	ZEX100
Contingency Decal (12")	ZEX104



Black Velvet Bottle Bag

Tired of the local speed shop scratching your nitrous bottle when it gets filled? ZEX™ has the perfect solution. The ZEX™ Black Velvet Bottle Bag is a form fitting, embroidered black velvet bag that slips over any 10 lb. nitrous bottle. The bag is thin enough to be kept on the bottle, even while it is installed in brackets. It makes the perfect finishing touch to your nitrous system installation.

DESCRIPTION	PART #
Black Velvet Bottle Bag	82000B

Learn more about performance fuel system parts we have.