



YAMAHA POWER PRODUCTS

GENERATORS

PRESSURE WASHERS

PUMPS



YAMAHA

Revs Your Heart™

EF1000iS

SMALL BUT MIGHTY

Quiet, fuel efficient, and power clean enough to run sensitive electronic equipment all in a portable 28-lb package.



Features:

- Lightweight, easy to carry design – Compact lightweight alternator reduces weight to 27.9 lb., the lightest in its class.
- Smart Throttle™, load sensing RPM control – Greater fuel efficiency and noise reduction by automatically adjusting engine speed to match the load.
- Pulse Width Modulation (PWM) – For clean, high quality power. Voltage stability is within $\pm 1\%$, and frequency stability is ± 0.1 HZ. Its pure sine wave is as clean as or cleaner than public utilities power.
- Auto Warm-up – Automatically increases engine speed for 4~6 minutes to ensure smooth power delivery during cold start ups.
- 12 volt DC cable is included as standard equipment.
- Exclusive dual coil alternator stator – Greater output at a lower engine speed for reduced noise, fuel consumption, and engine wear.
- Centralized control panel – Easy access to controls.
- Gasoline petcock lets you shut off the gas to run the carb dry for storage – Prevents stale gas problems.
- 50cc Overhead Valve (OHV) engine – Noise-reducing operation with improved efficiency, increased reliability, and low oil consumption.
- Large fuel fill access – Wide mouth fuel fill reduces spilling and overflows during refueling.
- EPA & CARB Emission Engine Durability Rating – Yamaha generators have the longest emission engine durability ratings issued by the Environmental Protection Agency and the California Air Resources Board.

Specifications:

Type	Inverter
Maximum AC Output	1000 watts
Rated AC Output	900 watts
Rated / Maximum AC Current	7.5 / 8.3 amps @ 120V
Engine	OHV, air-cooled, single cylinder, 4-stroke
Displacement	50cc
Overall Length	17.7 in
Overall Width	9.4 in
Overall Height	14.9 in
Dry Weight	27.9 lb
Fuel Tank Capacity	0.66 gal
Continuous Operation at 1/4 Rated Load	11.9 hr
Noise Level	47 – 57 dBA
Limited Warranty	3 year limited warranty*

*Except commercial/rental use, 2 year Limited Warranty.

EF2000iSv2/EF2000iSHv2

QUIETLY POWERS A WIDER RANGE OF APPLICATIONS

The EF2000iSv2 incorporates a completely new controller with advanced programming, allowing the EF2000iSv2 the ability to power a much wider range of applications.



Features:

- New Controller with advanced programming – Allows the EF2000iSv2 the ability to power a much wider range of applications than previous generation EF2000iS.
- Super-quiet muffler with USFS-approved spark arrestor – Only 51.5 dBA at 1/4 load and eliminates errant sparks.
- Lightweight & Compact – 44 pounds, 2.2 cu.ft. size is easy to store and transport.
- Smart Throttle™ varies engine speed based on load – Improves fuel economy and reduces noise. Runs up to 10.5 hours at 1/4 rated load on a tank of gas.
- Gasoline petcock – Lets you shut off the gas to run the carb dry for storage and helps prevent stale gas problems.
- Fuel gauge – Allows fuel level to be seen at a glance.
- TwinTech (parallel generator operation) – The EF2000iSv2 can be operated in parallel to deliver up to 30 amps.*
- OHV engine with cast iron cylinder liner – Efficient, reliable, powerful providing long life and excellent heat dissipation. Includes steel camshaft and valve train components.
- Inverter system with Pulse Width Modulation (PWM) control – Produces a pure sine wave to run products with built-in microcomputers or microcomputer-controlled electric tools.
- Oil Watch Warning system – Prevents engine damage caused by low oil, avoiding costly repairs and minimizing down time, adding customer confidence and peace of mind.
- Auto warm-up – Increases engine speed during cold starts to handle high power demand appliances right away.
- Auto-decompression system – Reduces compression for easier starting.
- Comfortable grip handle – Easy portability and storage.

Specifications:

Type	Inverter
Maximum AC Output	2000 watts
Rated AC Output	1600 watts
Rated / Maximum AC Current	13.3 / 16.7 amps @ 120V
Engine	OHV, air-cooled, single cylinder, 4-stroke
Displacement	79cc
Overall Length	19.3 in
Overall Width	11.0 in
Overall Height	17.9 in
Dry Weight	44.1 lb
Fuel Tank Capacity	1.1 gal
Continuous Operation at 1/4 Rated Load	10.5 hr
Noise Level	51.5 – 61 dBA
Limited Warranty	3 year limited warranty

*A second Yamaha EF2000iSv2 is recommended to use the full capabilities of this model.

EF2400iSHC

HIGH OUTPUT, SMALL PACKAGE

The EF2400iSHC inverter combines light weight and the latest technology to produce the highest output.

Features:

- High Current output – This High Current model is capable of starting high efficiency AC units.
- Pulse Width Modulation – Provides power that is as clean, or cleaner than commercial power.
- Smart Throttle™ feature – Adjusts the engine speed to precisely match the load.
- Oil Watch Warning system – Prevents engine damage caused by low oil, avoiding costly repairs and minimizing down time, adding customer confidence and peace of mind.
- OHV engine – Improved efficiency, increased reliability, quieter operation.
- Compact and lightweight – Easy portability.
- Versatile power in the silent, 2000-watt class – Will run most 13,500 btu RV air conditioners, microwave/convection ovens, or even most hair blow dryers.
- Engine speed at full load (2400 watts) is only 3400 RPM – Quiet operation.
- Cast iron cylinder liner – Provides long engine life and consistent performance during continuous use.
- Rear access panel for easy servicing.
- Fuel gauge – See fuel level at-a-glance.
- Aluminum die cast frame – Strong yet lightweight.
- Gasoline petcock lets you shut off the gas to run the carb dry for storage – Prevents stale gas problems.
- 12 volt DC cable is included as standard equipment.



Specifications:

Type	Brushless, Inverter AC Generator
Maximum AC Output	2400 watts
Rated AC Output	2000 watts
Rated / Maximum AC Current	16.7 / 20 amps @ 120V
Engine	OHV, air-cooled, single cylinder, 4-stroke
Displacement	171cc
Overall Length	20.8 in
Overall Width	16.5 in
Overall Height	18.2 in
Dry Weight	75 lb
Fuel Tank Capacity	1.6 gal
Continuous Operation at 1/4 Rated Load	11.0 hr
Noise Level	53 – 60 dBA
Limited Warranty	3 year limited warranty

EF2800i

COMPACT LIGHTWEIGHT PERFORMANCE

2,800 maximum watts of output in a compact 68-pound package equals exceptional power output to weight ratio.

Features:

- Inverter system with Pulse Width Modulation (PWM) control – Provides clean power to operate computers or computer-controlled electric tools/devices.
- Smart Throttle™ – Improves fuel economy and reduces noise.
- Multi-pole alternator – Excellent power output to weight ratio.
- Ground Fault Circuit Interrupter (G.F.C.I.) – Added safety if the system senses a leak to “ground,” it automatically cuts off power to help prevent injuries.
- OHV engine – Improved efficiency, increased reliability quieter operation.
- Cast iron cylinder lining – Provides long engine life and consistent performance during continuous use.
- Oil Watch Warning System – Prevents engine damage, avoiding costly repairs and minimizing down time.
- USFS-approved spark arrestor – Reduces chance of fire caused by an errant spark.
- Noise suppressor – Reduces electrical interference with TVs and radios.
- Specially designed muffler – Reduces noise and weight.
- AC non-fuse thermal circuit breaker – Added durability and peace of mind.
- 12 volt DC cable is included as standard equipment.
- Open frame design – Provides a lighter weight and large gasoline capacity.
- EPA & CARB Emission Engine Life Rating – Yamaha generators have long emission engine life ratings issued by the Environmental Protection Agency and the California Air Resources Board.



Specifications:

Type	Brushless, Inverter
Maximum AC Output	2800 watts
Rated AC Output	2500 watts
Rated / Maximum AC Current	20.8 / 23.3 amps @ 120V
Engine	OHV, air-cooled, single cylinder, 4-stroke
Displacement	171cc
Overall Length	19.2 in
Overall Width	15.6 in
Overall Height	16.7 in
Dry Weight	68 lb
Fuel Tank Capacity	2.6 gal
Continuous Operation at 1/4 Rated Load	14.7 hr
Noise Level	65 – 68 dBA
Limited Warranty	3 year limited warranty

EF3000iS

QUIET, CLEAN POWER AT A VALUE PRICE

Quiet, portable, and powerful, this inverter generator has features such as Noise Block, Smart Throttle™, and Auto Decompression for easy recoil starting.

Features:

- Noise Block, acoustically designed sound reduction system – Sound absorbing material, used in key locations, does not resonate sound. Newly designed muffler and molded fan produce unbeatable noise reduction at 53 - 60 dBA.
- Independent gasoline petcock – Helps reduce carburetor cleaning and repairs by eliminating stale gas in the carb.
- Smart Throttle™, load sensing RPM control – Greater fuel efficiency and noise reduction by automatically adjusting engine speed to match the load.
- Long run time – Continuous operation for up to 18.6 hours without refueling (at 1/4 rated load with “Smart Throttle™” function on).
- 12 Volt DC output, battery charging cables included.
- Inverter system with Pulse Width Modulation (PWM) control – Can run products with built-in microcomputers, or microcomputer controlled electric tools.
- Centralized control panel – Easy access to controls.
- 171cc Overhead Valve (OHV) engine – Noise-reducing operation with improved efficiency, increased reliability, and low oil consumption.
- Oil Watch Warning system – Prevents engine damage to avoid costly repairs and minimize down time, adding customer confidence and peace of mind.
- Four wheels with parking brake – Easy transport and mobility.
- EPA & CARB Emission Engine Life Rating – Yamaha generators have long emission engine life ratings issued by the Environmental Protection Agency and the California Air Resources Board.
- Automatic decompression – Greatly reduces starting effort.



Specifications:

Type	Brushless, Inverter
Maximum AC Output	3000 watts
Rated AC Output	2800 watts
Rated / Maximum AC Current	23.3 / 25.0 amps @ 120V
Engine	OHV, air-cooled, single cylinder, 4-stroke
Displacement	171cc
Overall Length	26.8 in
Overall Width	17.5 in
Overall Height	21.9 in
Dry Weight	136 lb
Fuel Tank Capacity	3.4 gal
Continuous Operation at 1/4 Rated Load	18.6 hr
Noise Level	53 – 60 dBA
Limited Warranty	3 year limited warranty

EF3000iSEB

NOTHING BUT CLEAN, QUIET POWER

Noise Block, Smart Throttle™, Pulse Width Modulation, electric start - and the EF3000iSEB features Yamaha Boost Technology®.



Features:

- Yamaha Boost Technology® (YBT) – Boosts output by adding battery voltage to alternator output when needed. The Boost Control Unit (BCU) senses when extra power is needed and boosts output for up to 10 seconds, giving air conditioners, power tools, and other equipment the extra boost of power they may need to start quickly and efficiently.
- Noise Block, acoustically designed sound reduction system – Sound absorbing material, used in key locations, does not resonate sound. Newly designed muffler and molded fan produce unbeatable noise reduction.
- Smart Throttle™, load sensing RPM control – Greater fuel efficiency and noise reduction by automatically adjusting engine speed to match the load.
- Long run time – Continuous operation for up to 18.6 hours without refueling (at 1/4 rated load with “Smart Throttle™” function on).
- 12 Volt DC output, battery charging cables included.
- Inverter system with Pulse Width Modulation (PWM) control – Can run products with built-in microcomputers or microcomputer controlled electric tools.
- Centralized control panel – Easy access to controls.
- Electric starter – Effortless starting and ease of operation (battery included).
- 171cc Overhead Valve (OHV) engine – Noise-reducing operation with improved efficiency, increased reliability, and low oil consumption.
- Oil Watch Warning system – Prevents engine damage to avoid costly repairs and minimize down time adds customer confidence and peace of mind.
- Four wheels with parking brake – Easy transport and mobility.

Specifications:

Type	Brushless, Inverter
Maximum AC Output	3000 watts (+500 watts boost)
Rated AC Output	2800 watts
Rated / Maximum AC Current	23.3 / 25.0 amps @ 120V
Engine	OHV, air-cooled, single cylinder, 4-stroke
Displacement	171cc
Overall Length	26.8 in
Overall Width	17.5 in
Overall Height	21.9 in
Dry Weight	154.3 lb
Fuel Tank Capacity	3.4 gal
Continuous Operation at 1/4 Rated Load	18.6 hr
Noise Level	53 – 60 dBA
Limited Warranty	3 year limited warranty

EF4500iSE

MAXIMUM EFFICIENCY – MINIMUM NOISE

The most powerful engine in its class allows this inverter to run at a very low engine speed, reducing fuel consumption, noise, vibration and wear.



Features:

- 4500 watt maximum output, 4000 watt rated continuous output – Suitable for running two or more major RV appliances simultaneously.
- Very quiet 58–60 decibels.
- Low Speed Running – Using the most powerful engine in its class to run at a constant ultra low speed of 2600 RPM to reduce gasoline consumption, extend running time between refueling and reduce noise and engine wear.
- Up to 15.2 hours running time at one quarter rated load between refueling.
- Legal for sale in all 50 states – Meets CARB emission regulations and given highest EPA rating.
- Pulse Width Modulation Inverter System – Sine wave as clean as or cleaner than household electricity. Suitable for computers, televisions, satellite TV systems and other sensitive electronic equipment and appliances.
- Optional wireless remote control – Start and stop the generator from up to 66 feet away.
- Electric Start – Effortless turn the key to start.
- Automatic Choke – Easy starting even in cold climates.
- Low Oil Warning System – Shuts the engine off to protect the engine if the oil level drops.
- Power Meter – Easy to read meter indicates the amount of power being used and the amount that's available.
- Hour Meter – Displays the amount of running time accumulated to indicate servicing or refueling interval.
- Twin Bar – Aids in lifting and loading. Also utilize for transport and anti-theft security.
- Gas gauge – Indicates amount of gasoline to indicate refueling interval.

Specifications:

Type	Brushless, Inverter
Maximum AC Output	4500 watts
Rated AC Output	4000 watts
Rated / Maximum AC Current	33.3/37.5 amps@ 120V
Engine	OHV, air-cooled, single cylinder, 4-stroke
Displacement	357cc
Overall Length	30.7 in
Overall Width	24.3 in
Overall Height	27.2 in
Dry Weight	194 lb
Fuel Tank Capacity	4.5 gal
Continuous Operation at 1/4 Rated Load	15.2 hr
Noise Level	58 – 60 dBA
Limited Warranty	3 year limited warranty

EF6300iSDE

OUR MOST POWERFUL INVERTER EVER

The most powerful and advanced Yamaha inverter generator ever. It quietly cranks out up to 6300 watts of pure sine wave inverter power.



Features:

- Noise Block – Quiet, pleasant to use.
- Pure Sine Wave (Pulse Width Modulation) Inverter System – Run electronic equipment, appliances, variable-speed power tools and computers.
- Legal for sale in all 50 states – Meets CARB emission regulations and given highest EPA rating.
- Smart Throttle™ – Automatically adjusts engine speed to match power demand, reduces noise, fuel consumption and engine wear.
- Electric Start – Effortless starting (battery included).
- Automatic Choke – Effortless starting.
- Wireless Remote Control (optional) – Start and stop the generator from up to 66 feet away.
- Low Oil Shutoff – Protects engine from low oil damage.
- Fuel Level Gauge – See fuel level at a glance.
- Dual Voltage 120/240 Volt – Versatile, operate variety of 120V and 240V tools and appliances.
- Power Meter – See how much power is being used and how much power is available.
- Hour Meter – Shows accumulated running time for refueling and service scheduling.
- Lightweight - Easy transport.
- Twin Bar - Aid lift, transport and provide security point.

Specifications:

Type	Brushless, Inverter
Maximum AC Output	6300 watts
Rated AC Output	5500 watts
Rated / Maximum AC Current	45.8 amps /52.5 amps @120V; 22.9 amps/26.3 amps @ 240V
Engine	OHV, air-cooled, single cylinder, 4-stroke
Displacement	357cc
Overall Length	30.7 in
Overall Width	24.3 in
Overall Height	27.2 in
Dry Weight	200 lb
Fuel Tank Capacity	4.5 gal
Continuous Operation at 1/4 Rated Load	13.3 hr
Noise Level	58 – 64 dBA
Limited Warranty	3 year limited warranty

EF2600

PLENTY OF POWER, REASONABLE PRICE

Rugged, lightweight, and feature packed, the EF2600 is an excellent generator for the home or worksite.

Features:

- 4-stroke, OHV (overhead valve), single cylinder, air-cooled engine – Improved efficiency, increased reliability and quieter operation.
- Legal for sale in all 50 states – Meets CARB emission regulations.
- Auto-decompression system – Reduces compression for easier starting.
- AC Voltmeter – Provides easy-to-read voltage output.
- Oil watch warning system – Prevents engine damage, avoids costly repairs and minimizes down time. Provides added peace of mind and enhances long-term durability.
- AC Non-fuse thermal breaker – Peace of mind and added durability.
- Fuel gauge – See fuel level at-a-glance.
- Large 2.9 gallon fuel tank – Provides 8.5 hours of continuous operation @ rated load.
- Rugged full rollover frame – Added durability and protects generator engine and fuel tank.
- Mechanical governor – Maintains engine speed to deliver consistent AC output.
- Specially designed muffler – Reduces weight and noise.
- Brushless alternator – Maintenance free and reliable.
- Rubber vibration isolation mounts – Reduces vibration and increases smooth operation.
- Cast iron cylinder lining – Long engine life, excellent heat dissipation.



Specifications:

Type	Brushless
Maximum AC Output	2600 watts
Rated AC Output	2300 watts
Rated / Maximum AC Current	19 / 21.6 amps @ 120V
Engine	OHV, air-cooled, single cylinder, 4-stroke
Displacement	171cc
Overall Length	20.1 in
Overall Width	16.3 in
Overall Height	16.7 in
Dry Weight	92.6 lb
Fuel Tank Capacity	2.9 gal
Continuous Operation at Full Rated Load	8.5 hr
Noise Level	68.0 dBA
Limited Warranty	3 year limited warranty

EF5500D/EF5500DE

POWER-PACKED AND LOADED WITH FEATURES

The EF5500 offers the contractor and home backup customer 5500 watts of power at a great value.



Features:

- New and improved OHV MZ360 engine with a hemispherical head – Increases combustion efficiencies, which equals better fuel economy and longer run time.
- Rugged Wheel kit w/fold-down locking handles – Standard on EF5500DE and EF5500D.
- The battery is standard on the EF5500DE – Wheel kit and Battery are a great value and offer added convenience for transport and starting.
- Digital Hour Meter, Digital Volt Meter – Displays total run time accumulation for servicing and indicates the voltage output.
- Cast iron cylinder lining – Optimal heat dissipation.
- Automatic oil warning system shuts off engine before oil level is low – Prevents engine damage, avoids costly repairs, minimizes down time, enhances long term durability.
- Transistorized ignition provides lean, efficient spark – Maintenance-free and ensures fast, easy starting, reliable operation.
- Auto decompression – Automatically “opens” exhaust valve to reduce compression for easier starting.
- EPA Emission Engine Life Rating – The EF5500DE and EF5500D meet the strictest environmental standards - EPA and CARB.
- Ground Fault Circuit Interrupter (G.F.C.I.) – Added safety if the system senses a leak to “ground,” it automatically cuts off power to help prevent injuries.
- Fuel gauge – See fuel level at-a-glance.
- Tool kit – Makes service easier.

Specifications:

Type	Dual voltage, Brushless, AC Generator
Maximum AC Output	5500 watts
Rated AC Output	4500 watts
Rated / Maximum AC Current	36.0 / 44.0 amps @ 120V 18.75 / 22.9 amps @ 240V
Engine	MZ360
Displacement	358cc
Overall Length	29.1 in (handle down)
Overall Width	28.4 in
Overall Height	31.5 in
Dry Weight	D = 212 lb DE = 234 lb
Fuel Tank Capacity	6.9 gal
Continuous Operation at Full Rated Load	9.0 hr
Noise Level	74.1 dBA
Limited Warranty	3 year limited warranty

EF7200D/EF7200DE

ECONOMICAL AND FULL-FEATURED

The EF7200 is the economical, full-featured choice for contractors and serious home backup.



Features:

- Reduced price, more wattage – Great value with the same legendary quality and performance.
- The EF7200DE comes with an electric starter and auto choke for effortless push button starting.
- Comes standard with wheels, fold-down/locking handles and battery.
- Eight hours run time at full load – 18% longer run time than previous model.
- Digital Hour Meter, Digital Volt Meter – Displays total run time accumulation for servicing and indicates the voltage output.
- 3 year industrial and residential limited warranty with optional YES for customer peace of mind.
- Lifting eye – Convenient for hoisting and security.
- OHV engine – Improved efficiency, increased reliability, quieter operation.
- Full power, full time 120/240 dual voltage – Great for the job site or home backup.
- Ground Fault Circuit Interrupter (G.F.C.I.) – Added safety if the system senses a leak to “ground,” it automatically cuts off power to help prevent injuries.
- Fuel gauge – See fuel level at-a-glance.
- Rugged Design – Full roll cage protection for heavy jobs.

Specifications:

Type	Dual voltage, Brushless, AC Generator
Maximum AC Output	7200 watts
Rated AC Output	6000 watts
Rated / Maximum AC Current	50.0 / 60.0 amps @ 120V 25.0 / 30.0 amps @ 240V
Engine	MZ360
Displacement	358cc
Overall Length	29.1 in (handle down)
Overall Width	28.4 in
Overall Height	31.5 in
Dry Weight	D = 212 lb DE = 236 lb
Fuel Tank Capacity	6.9 gal
Continuous Operation at Full Rated Load	8.0 hr
Noise Level	74.5 dB
Limited Warranty	3 year limited warranty

EF12000DE

MEET THE CHALLENGE FOR BIG ELECTRICITY DEMAND

Really, there's just not much our highest-output gas-powered 120/240-volt output generator can't handle.

Features:

- Dual voltage – Provides the versatility of 120 and 240 volt operation.
- OHV engine (overhead valve) – Precise valve actuation and heavy-duty design offer improved efficiency, increased reliability and quiet operation.
- Cast iron cylinder lining – Provides optimal heat dissipation, consistent performance during continuous use and long engine life.
- Oil Watch Warning System – Automatically shuts off before oil level is low and cannot be re-started until oil is added. Prevents engine damage and costly repairs while enhancing long-term durability.
- Auto Voltage Regulation – Guarantees correct power delivery even with extension cords, enhances performance, adds convenience.
- Transistor Controlled Ignition (T.C.I.) – Provides clean, efficient spark that ensures fast, easy starting. Low maintenance, reliable operation.
- Noise Suppressor – Reduces electrical interference with TVs and radios.
- Auto Decompression – Automatically “opens” exhaust valve slightly to reduce initial back pressure when starting making manual starting effortless.
- USFS-approved Spark Arrestor – Offers quiet operation and keeps sparks from exiting exhaust system, reducing chance of fires caused by an errant spark.
- Ground Fault Circuit Interrupter (G.F.C.I.) – Added safety if the system senses a leak to “ground,” it automatically cuts off power to help prevent injuries.
- Fuel Gauge - Lets operator monitor how much fuel is left.
- Electric starter - For convenient ease of operation.*
- Economy idle - When there is no load on the generator, it automatically returns to idle for improved fuel efficiency and quieter operation.

*Battery not included.



Specifications:

Type	Brush, AVR AC Generator
Maximum AC Output	12,000 watts
Rated AC Output	9500 watts
Rated / Maximum AC Current	79.2 / 100.0 amps @ 120V 39.6 / 50.0 amps @ 240V
Engine	OHV, forced air-cooled, twin cylinder, 4-stroke
Displacement	653cc
Overall Length	33.3 in
Overall Width	29.6 in
Overall Height	33.3 in
Dry Weight	327.8 lb
Fuel Tank Capacity	11.4 gal
Continuous Operation at Full Rated Load	8.9 hr
Noise Level	80.0 dBA
Limited Warranty	3 year limited warranty

PW3028

LEGENDARY QUALITY, PERFORMANCE AND VALUE

Up to 3,000 pounds per square inch and 2.8 gallons-per-minute output.

Features:

- Reliable Yamaha power – Dependable 192cc 4-stroke, OHV, air-cooled engine from the name you know you can trust.
- 5-in-1 Nozzle – You've always got the right tip for your job with you.
- Durable, brass Triplex CAT Pumps® – The world leader in quality pressure washer pumps.
- Protective rubber overmold – Protect what your are washing from scratches.
- Pivoting tip – Convenient reach into wheel wells, under vehicles and more.
- Real performance – Delivers 3000 psi and 2.8 gpm to get the job done quickly.
- 30-foot hose – Steel braided high-pressure hose means longer reach.
- Built-in detergent tank – Great maneuverability with no tank to fall off mid job. Flexibility to use external detergent container for large jobs.
- Corrosion Resistant- Brass connectors and plated steel hose fittings provide longer life
- Never-flat tires – No fuss, non-pneumatic tires.
- Folding handle – Folds flat for convenient storage.
- Automatic Idle Down – Reduces fuel consumption and extends engine life.
- 360° rotating grip – The rotating grip can be positioned to right or left hand operation or whatever position feels the most comfortable and makes the cleaning job easier.
- 3-Year Factory Limited Warranty – Now that's peace of mind supported by a nationwide network of Yamaha dealers.
- Yamaha Extended Service – Additional 1, 2 or 3 years of Y.E.S. is available.



Specifications:

Length	24 in
Width	26 in
Height - Handle Up/ Handle Down	41.5 in / 25 in
Weight	96 lb
Gas Tank Capacity	1.5 gal
Run Time	1.5 – 2 hr
Tips	5 in 1: 25° psi, 40° psi, 25° 800 psi, Soap Jet, Soap Fan
Hose	30 ft
Tires	Never flat 13 x 5 x 6
PSI	3000
Low Pressure Nozzle	800 PSI
GPM	2.8
Engine	OHV, air-cooled, single cylinder, 4-stroke, EPA & CARB approved
Starting Method	Recoil w/auto decompression
Limited Warranty	3 year limited warranty*

*Commercial/rental use limited warranty 1 year

PW4040

INDUSTRIAL PRESSURE AND PERFORMANCE

The PW4040 steps up to 4,000 PSI and 4.0 gallons-per-minute to handle the tough jobs.

Features:

- 4,000 PSI & 4.0 gallons per minute – Industrial grade pressure and performance to tackle tough jobs.
- CAT Pumps® all brass triplex pump – High quality pump, excellent performance and durability.
- MZ360 commercial grade engine – Idle down technology saves fuel, less noise and reduces wear and tear.
- Pivoting tip – Allows user to clean in tough to reach areas.
- Rotating handle – Rotates 360° and locks into place for better handling and ease of use.
- Professional style quick-connect nozzles (0°, 15°, 25°, 40°) including handle mount nozzle holder.
- Easily accessible multi-tip selection – Capable of everything from blasting between bricks to cleaning dirt off an ATV.
- 3-Position pivot nozzle – Spray at various angles to access hard to reach locations.
- Tough 50' braided steel and rubber coated hose – Longer reach to clean larger jobs. Save 100' of walking every time you want to change tips.
- Corrosion Resistant- Brass connectors and plated steel hose fittings provide longer life.
- Steel wheels and axles – No breakdowns, long lasting.
- Hand truck roll cage frame – Easy transport and durability.
- Wide, non-pneumatic tires – Transport is made easy in rough terrain. Never flat tires.
- Automatic Idle Down – Reduces fuel consumption and extends engine life.
- Folding handle – Folds flat for convenient storage.
- Tool kit – Makes service easier.



Specifications:

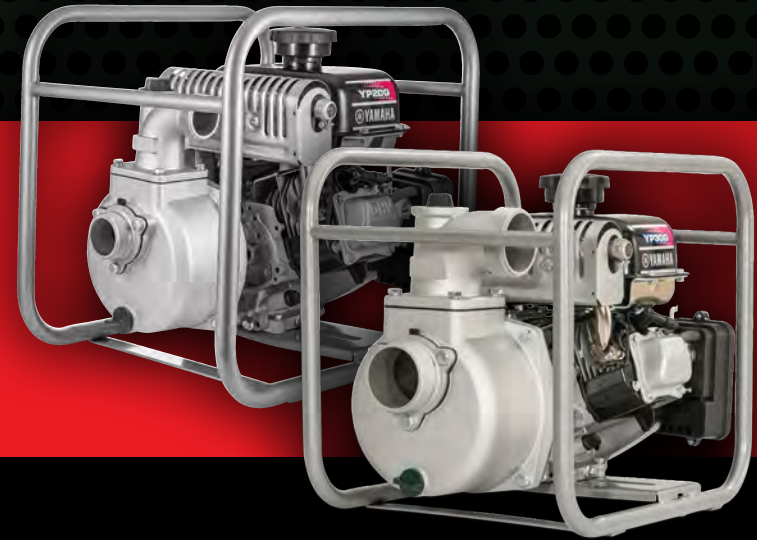
Length	26 in
Width	29 in
Height - Handle Up/ Handle Down	42 in / 24 in
Weight	171 lb
Gas Tank Capacity	1.61 gal
Tips	0° Tip, 15° Tip, 25° Tip, 40° Tip, Soap Tip
Hose	50 ft
Tires	Never flat, 12 x 4 in
PSI	4000
GPM	4.0
Engine	357cc OHV 4-stroke, single cylinder, air-cooled, EPA & CARB approved
Starting Method	Recoil w/auto decompression
Limited Warranty	3 year limited warranty*

*Commercial/rental use limited warranty 1 year

YP20G/YP30G

NEED TO MOVE SOME WATER?

A cast iron volute and impeller means these pumps are durable and reliable while pumping up to 169/259 gallons per minute.



Features:

- OHV engine – Improved efficiency, increased reliability, quieter operation.
- Cast iron cylinder lining – Has optimal heat dissipation.
- Automatic oil warning system shuts off engine before oil level is low – Prevents engine damage, avoids costly repairs, minimizes down time, enhances long term durability.
- Transistorized ignition provides lean, efficient spark – Maintenance-free and ensures fast, easy starting, reliable operation.
- Auto-decompression – Automatically “opens” exhaust valve to reduce compression for easier starting.
- EPA Emission Engine Life Rating – The YP20G and YP30G meet the strictest environmental standards – EPA and CARB.
- Factory Limited Warranty – Covers the entire waterpump for defects in parts and workmanship for three (3) years when the waterpump is used for non commercial, industrial or rental use. When the waterpump is used for commercial, industrial or rental use, Yamaha covers the waterpump for two (2) years.

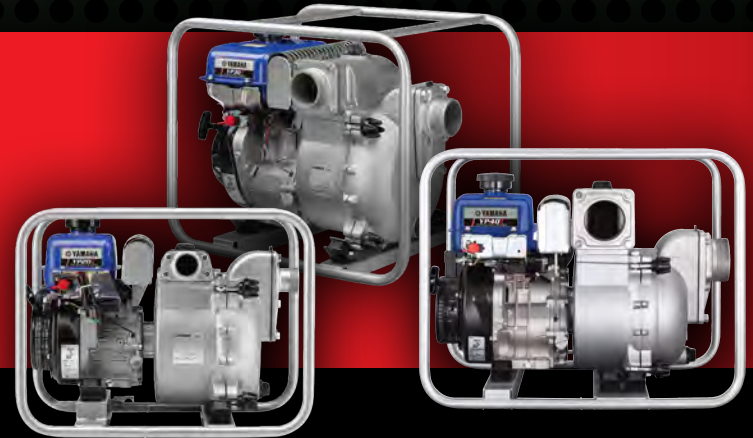
Specifications:

	YP20G	YP30G
Type	Self-priming, Centrifugal	Self-priming, Centrifugal
Caliber	2 in	3 in
Maximum Capacity	169 gal / min	259 gal / min
Total Head	89 ft	102 ft
Suction Head	26 ft	26 ft
Self-Priming Time	240 sec / 26 ft	540 sec / 26 ft
Engine	OHV, air-cooled, single cylinder, 4-stroke	OHV, air-cooled single cylinder, 4-stroke
L x W x H	15.63 x 20.39 x 18.82 in	15.63 x 20.39 x 18.82 in
Fuel Tank Capacity	1.06 gal	1.06 gal
Dry Weight	64.15 lb	66.14 lb
Limited Warranty	3 year	3 year

YP20T/YP30T/YP40T

CONSTRUCTION SITE READY PUMPING POWER

The right size pump to tackle the big jobs.



Features:

- Dewatering applications – Use for these types of dewatering applications: job site excavations, utility vaults, motocross tracks, mining sites, lakes and ponds, and barge holds
- Uses an OHV 4-stroke engine that is quieter, more powerful, and consumes less fuel than comparable engines.
- Can handle solids up to 1 1/16" (27 mm).
- Durable Pump - Impeller and volute case are cast iron for greater strength and durability; and they withstand wear from grit, sand, silt, etc.
- Outstanding Seal Durability - Newly adopted Japanese-made silicone carbide (SiC) seal - has better durability compared to conventional carbon ceramic seals.
- Standard National Pipe Thread (NPT) fittings connect easily with the suction and discharge hoses.
- 3 year industrial and residential warranty with optional Y.E.S. for customer peace of mind.
- Cast iron cylinder lining – Optimal heat dissipation.
- Automatic oil warning system shuts off engine before oil level is low – Prevents engine damage, avoids costly repairs, minimizes down time and enhances long term durability.
- Transistor Controlled Ignition (T.C.I.) – Provides clean, efficient spark that ensures fast, easy starting. Low maintenance, reliable operation.
- Auto decompression – Automatically "opens" exhaust valve to reduce compression for easier starting.

Specifications:

	YP20T	YP30T	YP40T
Type	Self-priming, Centrifugal	Self-priming, Centrifugal	Self-priming, Centrifugal
Suction Port	2 in	3 in	4 in
Discharge Port	2 in	3 in	4 in
Discharge Capacity	184 gal / min	356 gal / min	449 gal / min
Total Head	92 ft	79 ft	89 ft
Suction Head	26 ft	26 ft	26 ft
Self-Priming Time	100 sec / 26.25 ft	100 sec / 26.25 ft	200 sec / 26.25 ft
Solids Handling (Max)	.79 in	1 1/16 in	1 1/16 in
Engine	MZ 175 4-stroke, OHV, Forced air cooled	MZ 300 4-stroke, OHV, Forced air cooled	MZ 360 4-stroke, OHV, Forced air cooled
L x W x H	26.18 x 18.19 x 20.31 in	26.97 x 19.88 x 21.85 in	30.12 x 21.46 x 24.61 in
Fuel Tank Capacity	4 gal	5.5 gal	6.1 gal
Dry Weight	105 lb	138 lb	174 lb
Limited Warranty	3 year	3 year	3 year

SPECIFICATIONS

GENERATORS

INVERTER SERIES

PREMIUM SERIES

GENERATORS	EF1000 S	EF2000 Sv2	EF2400 SHC	EF2800	EF3000 S	EF3000 SEB	EF4500 SE	EF6300 SDE	EF2600	EF5500D/DE	EF7200D/DE	EF12000D
TYPE	BRUSHLESS INVERTER	BRUSHLESS INVERTER	BRUSHLESS INVERTER	BRUSHLESS INVERTER	BRUSHLESS INVERTER	BRUSHLESS INVERTER	BRUSHLESS INVERTER	BRUSHLESS INVERTER	BRUSHLESS AC GENERATOR	DUAL VOLTAGE, BRUSHLESS, AC GENERATOR	DUAL VOLTAGE, BRUSHLESS, AC GENERATOR	BRUSH, AVR, DUAL VOLTAGE, AC GENERATOR
RATED VOLTAGE	120V	120V	120V	120V	120V	120V	120V	120/240V	120V	120/240V	120/240V	120/240V
FREQUENCY	60 Hz	60 Hz	60 Hz	60 Hz	60 Hz	60 Hz	60 Hz	60 Hz	60 Hz	60 Hz	60 Hz	60 Hz
MAXIMUM AC OUTPUT	1000 watts	2000 watts	2400 watts	2800 watts	3000 watts	3000 watts (+500 watts boost)	4500 watts	6300 watts	2600 watts	5500 watts	7200 watts	12000 watts
RATED AC OUTPUT	900 watts	1600 watts	2000 watts	2500 watts	2800 watts	2800 watts	4000 watts	5500 watts	2300 watts	4500 watts	6000 watts	9500 watts
RATED/MAXIMUM AC CURRENT	7.5 / 8.3 amps @ 120 V	13.3 / 16.7 amps @ 120 V	16.7 / 20 amps @ 120 V	20.8 / 23.3 amps @ 120 V	23.3 / 25 amps @ 120 V	23.3 / 25 amps @ 120 V	33.3 / 37.5 amps @ 120 V	45.8 / 52.5 amps @ 120 V 22.9 / 26.3 amps @ 240V	19 / 21.6 amps @ 120 V	36.0 / 44.0 amps @ 120V 18.75 / 22.9 amps @ 240 V	50 / 60 amps @ 120 V 25 / 30 amps @ 240V	100 / 79.2 amps @ 120 V 50 / 39.6 amps @ 240V
DC OUTPUT	8 amps @ 12V	8 amps @ 12V	8 amps @ 12V	8.3 amps @ 12V	12 amps @ 12V	12 amps @ 12V	-	-	-	-	-	-
ENGINE												
TYPE	OHV, AIR-COOLED, SINGLE CYLINDER, 4-STROKE							OHV, AIR-COOLED, SINGLE CYLINDER, 4-STROKE				
DISPLACEMENT	50cc	79cc	171cc	171cc	171cc	171cc	357cc	357cc	171cc	358cc	358cc	653cc
STARTING SYSTEM	RECOIL w/ AUTO DECOMPRESSION					ELECTRIC w/ AUXILIARY RECOIL & AUTO DECOMPRESSION w/ optional wireless remote	ELECTRIC w/ AUTO DECOMPRESSION w/ optional wireless remote		RECOIL w/ AUTO DECOMPRESSION	RECOIL w/ AUTO DECOMPRESSION + ELECTRIC START FOR "DE" MODELS w/ optional remote		ELECTRIC w/ AUTO DECOMPRESSION w/ optional remote
GENERAL												
OVERALL LENGTH	17.7 in	19.3 in	20.8 in	19.2 in	26.8 in	26.8 in	30.7 in	30.7 in	20.1 in	31.5 in	31.5 in	33.3 in
OVERALL WIDTH	9.4 in	11 in	16.5 in	15.6 in	17.5 in	17.5 in	24.3 in	24.3 in	16.3 in	28.4 in	28.4 in	29.6 in
OVERALL HEIGHT	14.9 in	17.9 in	18.2 in	16.7 in	21.9 in	21.9 in	27.2 in	27.2 in	16.7 in	29.1 in (handle down)	29.1 in (handle down)	33.3 in
DRY WEIGHT	27.9 lbs	44.1 lbs	75 lbs	68 lbs	136 lbs	154.3 lbs	194 lbs	200 lbs	92.6 lbs	212 lbs / 234 lbs	212 lbs / 236 lbs	327.8 lbs
FUEL TANK CAPACITY	.66 gal	1.1 gal	1.6 gal	2.6 gal	3.4 gal	3.4 gal	4.5 gal	4.5 gal	2.9 gal	6.9 gal	6.9 gal	11.4 gal
CONTINUOUS OPERATION HOURS AT LOAD	11.9 hr @ 1/4 load	10.5 hr @ 1/4 load	11.0 hr @ 1/4 load	14.7 hr @ 1/4 load	18.6 hr @ 1/4 load	18.6 hr @ 1/4 load	15.2 hr @ 1/4 load	13.3 hr @ 1/4 load	8.5 hr @ rated load	9.0 hr @ rated load	8.0 hr @ rated load	8.9 hr @ rated load
NOISE LEVEL	47-57 dBA	51.5-61 dBA	53-60 dBA	64-68 dBA	53-60 dBA	53-60 dBA	58-60 dBA	58-64 dBA	68 dBA	74.1 dBA	74.5 dBA	80 dBA
LIMITED WARRANTY	3 years*	3 years	3 years	3 years	3 years	3 years	3 years	3 years	3 years	3 years	3 years	3 years

All units feature T.C.I. ignition system.

*3 Years Limited Warranty (except commercial/rental use = 2 year Limited Warranty)

FEATURES

GENERATORS

INVERTER SERIES

PREMIUM SERIES

GENERATORS	EF1000 S	EF2000 Sv2	EF2400 SHC	EF2800	EF3000 S	EF3000 SEB	EF4500 SE	EF6300 SDE	EF2600	EF5500D/DE	EF7200D/DE	EF12000D
OHV ENGINE	•	•	•	•	•	•	•	•	•	•	•	•
CAST-IRON CYLINDER LINING		•	•	•	•	•	•	•	•	•	•	•
BRUSHLESS ALTERNATOR	•	•	•	•	•	•	•	•	•	•	•	
OIL WARNING ENGINE SHUT-OFF SYSTEM	•	•	•	•	•	•	•	•	•	•	•	•
TRANSISTOR CONTROLLED IGNITION (T.C.I.)	•	•	•	•	•	•	•	•	•	•	•	•
NOISE SUPPRESSOR	•	•	•	•	•	•	•	•	•	•	•	•
NOISE BLOCK	•	•	•		•	•	•	•				
AUTO DECOMPRESSION	•	•	•	•	•	•	•	•	•	•	•	•
USFS-APPROVED SPARK ARRESTOR	•	•	•	•	•	•	•	•	•	•	•	•
FUEL GAGE		•	•	•	•	•	•	•	•	•	•	•
BUILT-IN HOUR METER							•	•		•	•	
ELECTRIC STARTING						•	•	•		• (only on DE model)	• (only on DE model)	•
ECONOMY IDLE/SMART THROTTLE™	S	S	S	S	S	S	S	S		E	E	E
AUTOMATIC CHOKE							•	•		•	•	•
DUAL VOLTAGE (120/240V)								•		•	•	•
GROUND FAULT CIRCUIT INTERRUPTER (GFCI)								•		•	•	•
12V DC OUTPUT W/PROTECTOR	•	•	•	•	•	•						
BATTERY CHARGING CORD	•	•	•	•	•	•						
FULLY ENCLOSED DESIGN	•	•	•		•	•	•	•				
TOOL KIT	•	•	•	•	•	•	•	•	•	•	•	•
WHEELS			4-wheel opt.		4-wheel std.	4-wheel std.	4-wheel std.	4-wheel std.		2-wheel std.	2-wheel std.	4-wheel std.
REMOTE CONTROL STARTER KIT (OPTIONAL)						wireless	wireless	wireless		wired remote	wired remote	wired remote

SPECIFICATIONS

PRESSURE WASHERS

PRESSURE WASHERS	PW3028	PW4040
LENGTH	24 in	26 in
WIDTH	26 in	29 in
HEIGHT - HANDLE UP/ HANDLE DOWN	41.5 in / 25 in	42 in / 24 in
WEIGHT	96 lb	171 lb
GAS TANK CAPACITY	1.5 gal	1.61 gal
RUN TIME	1.5 – 2 hr	n/a
TIPS	5 in 1: 25° psi, 40° psi, 25° 800 psi, Soap Jet, Soap Fan	0° Tip, 15° Tip, 25° Tip, 40° Tip, Soap Tip
HOSE	30 ft	50 ft
TIRES	Never flat 13 x 5 x 6	Never flat 12 x 4 in
PSI	3000	4000
LOW PRESSURE NOZZLE	800 PSI	
GPM	2.8	4.0
ENGINE	OHV 4-stroke, single cylinder, Air cooled, EPA & CARB approved	358cc OHV 4-stroke, single cylinder, air -cooled, EPA & CARB approved
STARTING METHOD	Recoil w/auto decompression	Recoil w/auto decompression
LIMITED WARRANTY	3 year limited warranty. Commercial/rental use limited warranty 1 year	3 year limited warranty. Commercial/rental use limited warranty 1 year

WATER PUMPS

PUMPS	YP20G	YP30G	YP40T
CALIBER (OUTLET DIAMETER)	2 in	3 in	4 in
MAXIMUM CAPACITY	169 gal/min	259 gal/min	449 gal/min
TOTAL HEAD	89 ft	102 ft	89 ft
SUCTION HEAD	26 ft	26 ft	26 ft
SELF-PRIMING TIME	240 sec/26 ft	540 sec/66 ft	200 secs/26 ft
SOLID HANDLING CAPABILITY	none	none	1 1/6" (27mm)
ENGINE			
TYPE	OHV, AIR-COOLED, SINGLE CYLINDER, 4-STROKE		
DISPLACEMENT	171cc	171cc	357cc
GENERAL			
OVERALL LENGTH	15.63 in	15.63 in	30.12 in
OVERALL WIDTH	20.39 in	20.39 in	21.46 in
OVERALL HEIGHT	18.82 in	18.82 in	24.61 in
DRY WEIGHT	64.15 lb	66.14 lb	174.39 lb
FUEL TANK CAPACITY	1.06 gal	1.06 gal	1.61 gal
LIMITED WARRANTY	3 years	3 years	3 years

APPLICATION WORKSHEET

APPLIANCE

Generator Sizing

When purchasing a generator, it's important that you select one that's capable of meeting your energy requirements. You must match the rated output of the generator to the maximum anticipated power to be used.

This section will assist you in estimating the power requirement so you can purchase the generator that will satisfy your needs. This includes using the accompanying worksheet to make a list of the tools and appliances you expect to operate, as well as the approximate power requirements for each device.

Once you have the list, you can estimate the highest demand that will be put on the generator under the "worst-case" conditions. With this figure, you can determine the appropriate model Yamaha generator for your particular needs.

Take It Step-By-Step

Follow these steps when determining your energy needs:

1. Identify the wattage requirements for the tools and appliances that you want to power. The power requirement for the tool or appliance can be found on its identification plate or in the owner's manual. If the power requirement is given in amps, multiply the amps times volts to determine the required watts.

$$\text{Amps} \times \text{Volts} = \text{Watts}$$

2. Add up the required watts of all the tools and appliances you expect to operate simultaneously.
3. The total watts determined in step 2 is the size Yamaha generator you need. These three simple steps will "size" a generator.

	RUNNING WATTAGE RANGE	STARTING WATTAGE RANGE	YOUR RUNNING WATTAGE
RESIDENTIAL			
REFRIGERATOR	200-500	600-1500	
1000-WATT MICROWAVE OVEN	1500	1700	
SUMP PUMP	500-1200	1000-2500	
WELL PUMP (240V)	2500-5000	4000-10,000	
TELEVISION	150-300		
COFFEEMAKER	500-800		
COMPUTER	200-800		
PRINTER	500		
PERSONAL HEATER	1500		
LIGHTS	See bulb wattage		
ELECTRIC RANGE EACH BURNER (240V)	2500		
WATER HEATER (240V)	4500		
HAIR DRYER	1500-1750		
AQUARIUM HEATER & PUMP	500-2000		
RECREATIONAL VEHICLE			
AIR CONDITIONER	1200-2000	2000-3500	
REFRIGERATOR	650		
WATER HEATER	1400		
BATTERY CHARGER	150-1000		
GENERAL			
RECIPROCATING SAW	500		
ROTARY HAMMER	1000		
CHAIN SAW 7 1/4"	1200		
CIRCULAR SAW	2000	3000	
1/2" DRILL	700		
BELT SANDER	1000		
DISC SANDER 9"	1200		
DISC GRINDER	1800		
TOTAL:			

ACCESSORIES

GENERATOR, PRESSURE WASHER, & PUMP

A. GENERATOR, PRESSURE WASHER, & PUMP COVERS

Protect your investment during storage with covers made from premium SurLast® polyester fabric. This UV-resistant material fights fading while protecting your equipment from the elements. A special urethane coating lets moisture escape from underneath while remaining water repellent. The cover is mold and mildew resistant, as well as tear and abrasion resistant for durability.

B. AM/WATT™ APPLIANCE LOAD TESTER

Gives quick, accurate readout of watts or amps used by 120 volt AC electrical devices (1875 Watts Maximum) such as refrigerators, space heaters, hair dryers and much more. Has a 26" cord to reach remote electrical outlets. Easy amps/watts slide switch. Perfect for matching appliance loads to generator power output.

C. SIDEWINDER PARALLEL POWER CABLES

The fast, safe, and easy way to combine the power of two Yamaha EF2000iSv2 Inverter generators. Cable features include polarized IP30 banana plugs, quick connection to parallel jacks on both generators, color-coded wire leads, exclusive flexible tip construction that resists breakage, compatibility with a standard 30A RV cord, rugged over-braided cable design, and a handy Velcro mounting system.

D. REMOTE STARTER KIT

Add extra convenience for getting up and going when you need to with the Remote Starter Kit. Features a 33-foot cord with remote starter switch.

E. TWIN TECH CABLE

Connect two EF2000iSv2 generators in-line with a Twin Tech cable and output for Max 30 AMPs and Rated 25 AMPs of power. Includes standard 30 amp twist-lock receptacle. For RV use, the RV Adapter Kit is required.

F. YAMAHA QUICK START REMOTE START KIT

This convenient Yamaha QuickStart Remote Start Kit allows you to start and stop your Yamaha generator remotely. QuickStart Remote Start Kit connects into a connector already in place on the generator's wiring harness, and mounts securely inside the generator using an existing mounting bolt.

G. RV ADAPTER KIT

The RV Adapter Kit has a 30A receptacle for RV use. Required if connecting the Twin Tech Cable to RV.

H. BATTERY TENDER® PLUS

1.25 amp battery charger designed to fully charge a battery and maintain it at proper storage voltage without the damaging effects caused by trickle chargers. Included is a quick connect ring terminal harness for hard to reach areas and alligator clips for an alternate connection.

I. YAMAHA DELUXE HOUR METER

Helps you keep track of your engine's operating hours. Also includes pre-programmed service intervals at 10 hours (initial) and every 50 hours thereafter. A flash alert displays for a 2-hour period upon reaching the specified interval.



ACCESSORIES

PRESSURE WASHER

A. CAT PUMPS® OIL

Promotes better performance and longer pump life. Features anti-corrosion technology keeping your pump conditioned and protected and anti-wear stabilizers for reliable performance day after day.

B. PRESSURE WASHER PUMP PROTECTOR

Promotes better performance and longer pump life. Features anti-corrosion technology keeping your pump conditioned and protected and anti-wear stabilizers for reliable performance day after day.

C. YAMAHA GUTTER CLEANER

The Yamaha Gutter Cleaner is ideal for fast and effective gutter cleaning. Two high-pressure water jets blast debris out and away. Directs debris and water away from the user for clean, dry operation. Quick-connect capable for easy attachment.

D. YAMAHA NOZZLE KIT

The Yamaha Nozzle Kit features 0°, 25°, 40°, Soap, and 800 psi nozzles for cleaning a variety of surfaces. Heavy-duty electropolish finish for more durability and longer performance life. Includes 800 psi nozzle for safe cleaning of delicate surfaces.

E. YAMAHA REPLACEMENT WAND

The Yamaha Replacement Wand is an ideal upgrade for old or worn out spray wands. Quick-connect capable for easy attaching of all quick-connect accessories.

F. YAMAHA STEEL BRAIDED HOSE

The Yamaha Steel Braided Hose is constructed for durability and long life. Quick-connect capable to easily attach an additional 30 feet for more reach than standard hoses. Links to existing hoses for longer reach.

G. YAMAHA SURFACE CLEANER

Cleans large surfaces up to 4x faster than a standard nozzle. Rotating nozzles provide streak free, even cleaning. 15" cleaning path for much faster cleaning. Purchase of the surface cleaner must include purchase of the replacement wand as the pivoting tip can be damaged by added weight of surface cleaner.

H. YAMAHA TELESCOPING POLE

The Yamaha Telescoping Pole features an adjustable height that extends between 7-16.5'. Quick Connect capable for easy attaching. Angled wand tip for more direct contact with high surfaces.

I. YAMAHA WAND EXTENSION KIT

Extend the length of your pressure washer with the Yamaha Wand Extension Kit. Add 36 inches for easier reaching. Includes quick-connect adapter to transform any threaded nozzle into a quick-connect nozzle.

J. YAMAHA TURBO NOZZLE

The Yamaha Turbo Nozzle cleans up to 50% faster than a standard nozzle. Delivers 0° rotating spray pattern for faster cleaning.



YAMALUBE & QUALITY CARE PRODUCTS

OIL, CHEMICALS & ADDITIVES

A. YAMACLEAN® PRO-WASH SPRAY CONCENTRATE

Special concentrated formula for use in pressure washer soap tanks. A biodegradable vehicle wash that removes grime and soil. Rinses clean and helps keep your vehicle looking new. Safe for use on most surfaces when used as directed. NOTE: For use as Yamaclean Pro-Wash Spray, dilute 1 part Yamaclean Pro-Wash Spray Concentrate with 1 part water.

B. 10W-30 GOLF CAR AND GENERATOR OIL

Specially formulated mineral base oil and additive system for the rigors of a constant load and frequent start-ups as found with the normal operation of a golf car or generator. This oil meets or exceeds the JASO MA requirements.

C. FUEL MED RX

This proprietary, alcohol-free blend fights moisture, oxidation, and phase separation in ethanol enriched fuels, and protects fuel system metals from corrosion. Use continuous treat rate if out of season fuel will sit in a tank for 7+ days. The storage treat rate keeps fuel fresh for up to one year. The 16-oz. size has a chambered bottle for easy measuring, and the 3.2-oz. size is blended to add to 5 gallons of gas for extra convenience.

D. ENGINE MED RX

Provides superior carbon deposit control, cleaning injectors, carburetors, intake valves and ports, and combustion chambers. It also protects fuel system metals from ethanol sulfate salt corrosion. Add it at every fill up to avoid unnecessary engine repairs due to poor quality gas, and to keep your engine clean and running efficiently. The 16-oz. size has a chambered bottle for easy measuring, and the 3.2-oz. size is blended to add to 5 gallons of gas for extra convenience.

A.



B.



C.



D.



Discover other generators on our website.