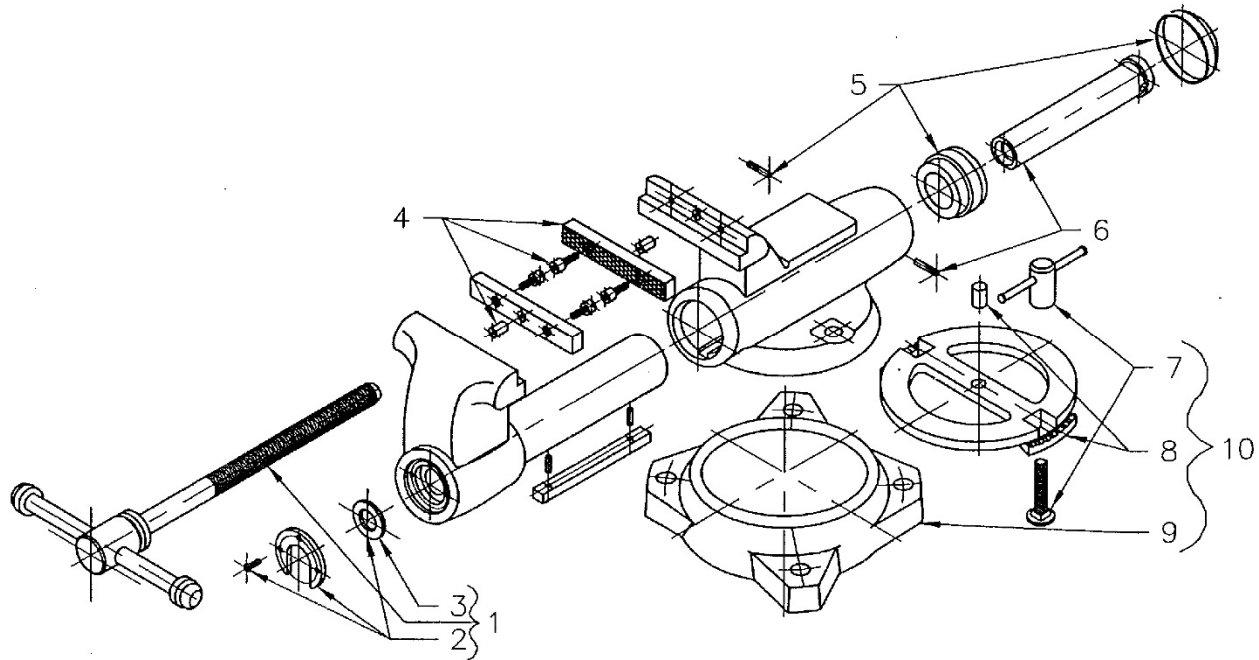




#28833, 6-inch Swivel Base Machinist Vise (model 600S)



Replacement parts

| Item | Part No. | Description |
|------|----------|---|
| 1 | 2900050 | Spindle Assembly Complete |
| 2 | 2904500 | Spindle Retainer (with 3 screws and #3) |
| 3 | --- | Thrust Washer (<i>not available separately</i>) |
| 4 | 2903280 | Serrated Jaw Inserts with 4 screws |
| 5 | 2901070 | End Piece Assembly Complete, with 2 pins |
| 6 | 2901080 | Casing Nut with 2 pins |
| 7 | 2904160 | Lock Nut Assemblies |
| 8 | 1010830 | Inner Ring with Dowel Pin |
| 9 | 1010840 | Outer Ring only |
| 10 | 2904150 | Swivel Base Assembly Complete (includes #7,8,9) |

Specifications

| | |
|--------------|--------------------|
| Stock no. | 28832 |
| Model no. | 600S |
| Jaw width | 6 in. (153 mm) |
| Jaw opening | 10 in. (254 mm) |
| Throat depth | 5-1/2 in. (140 mm) |
| Net weight | 156 lbs. (71 kg) |

Note: See reverse side for important safety instructions.



IMPORTANT SAFETY INSTRUCTIONS

- Misuse of vise can cause serious injury to eyes, hands, limbs, etc.
- To ensure safety, vise must be set up and used properly.
- Before setting up and using, read, understand, and follow all instructions as outlined below.

When setting up vise:

- Use proper size bolts, nuts, lock and flat washers, in all base mounting Holes. Never weld base of vise to any metal object.
- Only hand-tighten swivel base lock down nuts at the sides of the vise.
- Never use a pipe extension to tighten lock nut handles; this can cause the handles to bend and overstress the lock down bolts.
- Make sure the bench top to which the vise is mounted is properly secured.

When using vise:

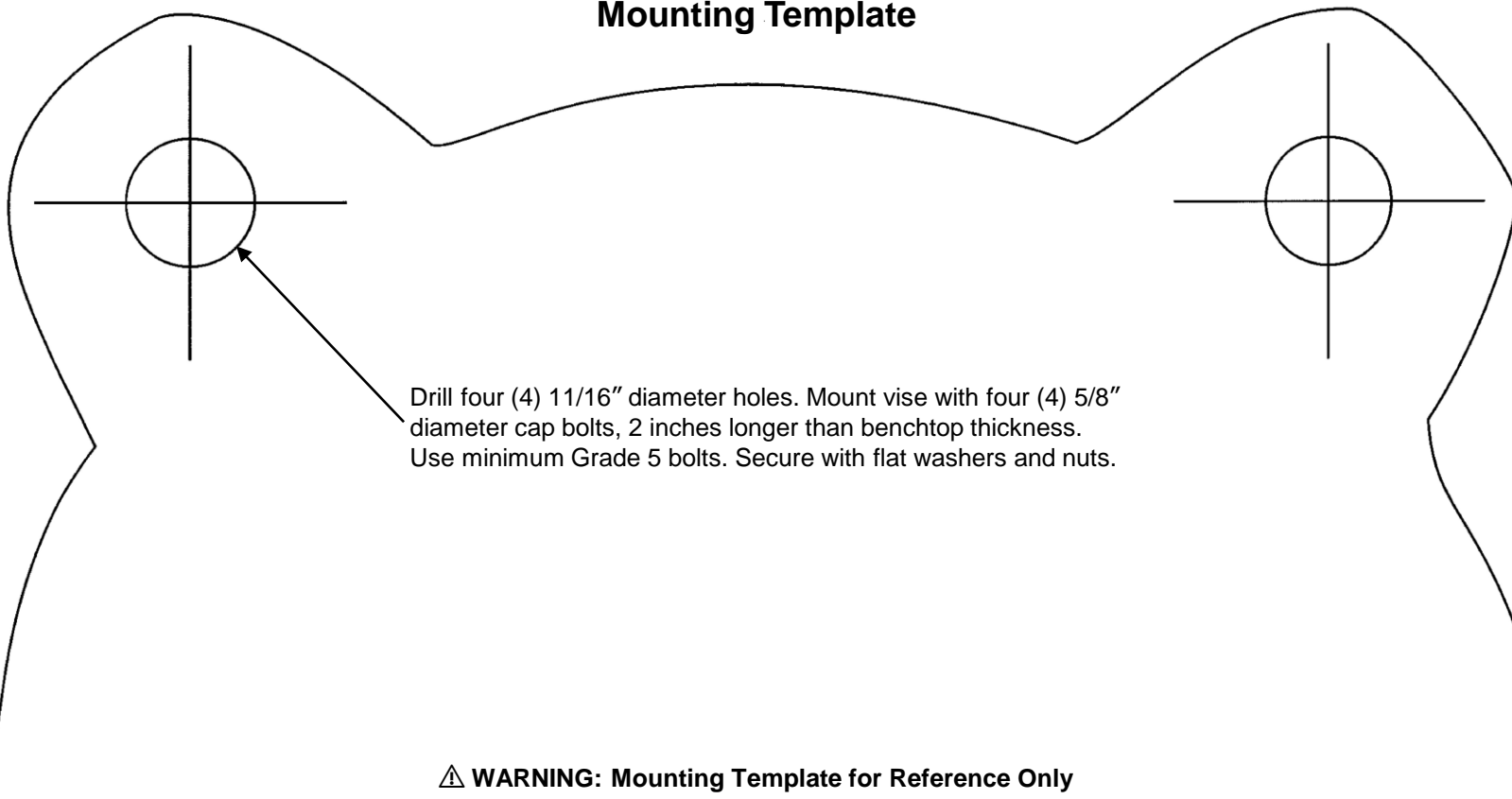
- Always use vise of proper size and capacity to hold work object.
- Never use a hammer, pipe extension or cheater bar on spindle handle of vise.
- Never unscrew moveable jaw beyond the maximum specified opening of the vise.
- Never use vise as a press for assembly or disassembly of objects.
- Always wear eye and face protection when striking vise-held objects or when using power tools with a vise.
- NOTE: The spindle handle ("tommy bar") has been engineered to bend if excessive clamping pressure is applied, to prevent potential damage to vise.



WARNING: This product can expose you to chemicals including titanium dioxide which is known to the State of California to cause cancer.

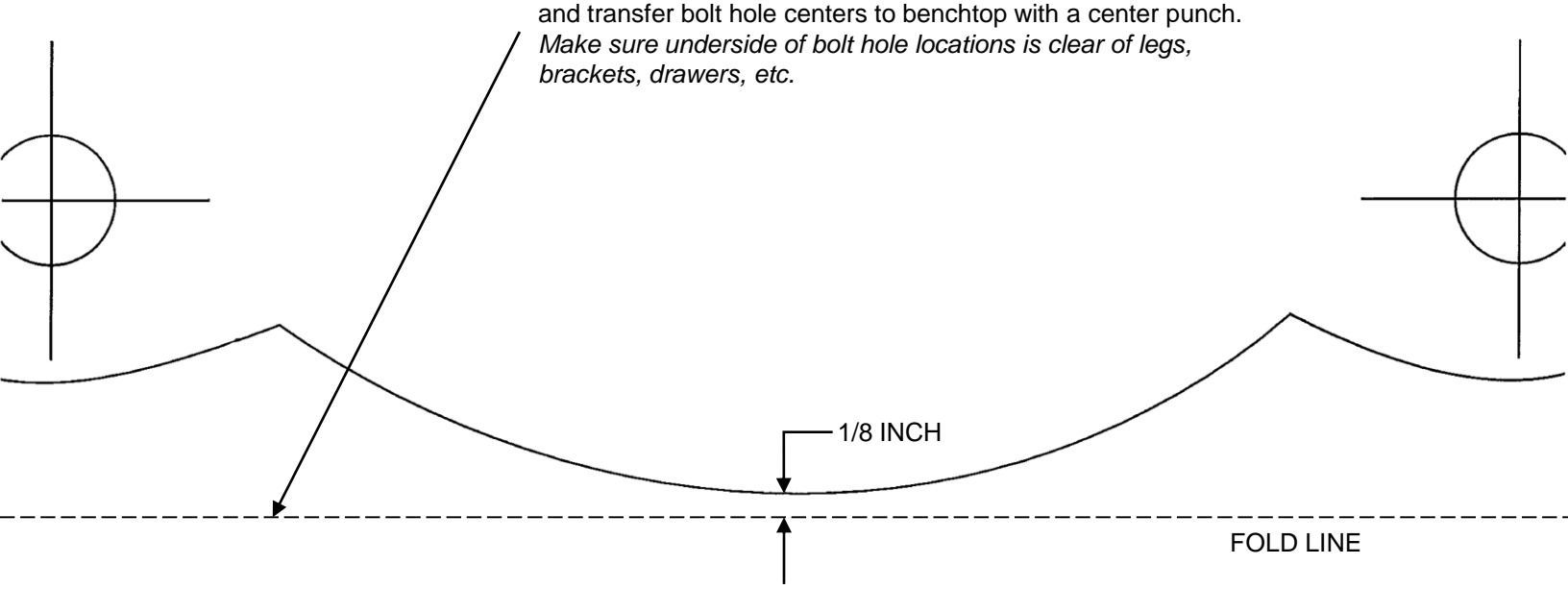


#28833 Model 600S Machinist Vise Mounting Template



Drill four (4) 11/16" diameter holes. Mount vise with four (4) 5/8" diameter cap bolts, 2 inches longer than benchtop thickness. Use minimum Grade 5 bolts. Secure with flat washers and nuts.

⚠ WARNING: Mounting Template for Reference Only



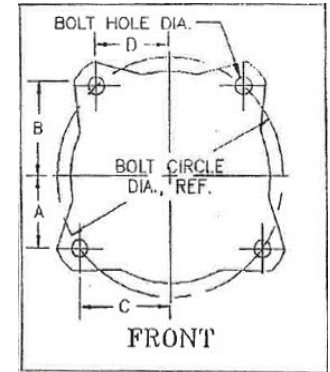
Align dashed line with edge of workbench. Tape paper in place and transfer bolt hole centers to benchtop with a center punch. *Make sure underside of bolt hole locations is clear of legs, brackets, drawers, etc.*

1/8 INCH

FOLD LINE



Bullet Bench Vise Mounting Dimensions



| | Stock No. | Model | Base Outer Ring Part No. | Dimension A (in.) | Dimension B (in.) | Dimension C (in.) | Dimension D (in.) | Bolt Circle Diameter (in.) | Bolt Hole Diameter (in.) | Mounting Bolt Diameter (in.) |
|--------------------|-----------|--------|--------------------------|-------------------|-------------------|-------------------|-------------------|----------------------------|--------------------------|------------------------------|
| Combo Pipe & Bench | 28825 | C0 | 1011990 | 2 3/16" | 2 7/8" | 3 1/16" | 2 7/16" | 7 1/2" | 9/16" | 1/2" |
| | 28826 | C1 | 1011980 | 2 9/16" | 3 5/16" | 3 9/16" | 2 13/16" | 8 3/4" | 11/16" | 5/8" |
| | 28827 | C2 | 1010840 | 2 13/16" | 3 3/4" | 4 " | 3 1/8" | 9 3/4" | 11/16" | 5/8" |
| | 28828 | C3 | 1011080 | 3 1/2" | 4 3/8" | 4 1/2" | 3 5/8" | 11 3/8" | 11/16" | 5/8" |
| Machinist | 28830 | 300S | 1012010 | 1 7/8" | 2 7/16" | 2 9/16" | 2 1/16" | 6 3/8" | 7/16" | 3/8" |
| | 28831 | 400S | 1011980 | 2 9/16" | 3 5/16" | 3 9/16" | 2 13/16" | 8 3/4" | 11/16" | 5/8" |
| | 28832 | 500S | 1011980 | 2 9/16" | 3 5/16" | 3 9/16" | 2 13/16" | 8 3/4" | 11/16" | 5/8" |
| | 28833 | 600S | 1010840 | 2 13/16" | 3 3/4" | 4 " | 3 1/8" | 9 3/4" | 11/16" | 5/8" |
| | 28834 | 800S | 1011080 | 3 1/2" | 4 3/8" | 4 1/2" | 3 5/8" | 11 3/8" | 11/16" | 5/8" |
| Tradesman XC | 28840 | 1745XC | 1011990XC | 2 3/16" | 2 7/8" | 3 1/16" | 2 7/16" | 7 1/2" | 9/16" | 1/2" |
| | 28841 | 1755XC | 1011980XC | 2 9/16" | 3 5/16" | 3 9/16" | 2 13/16" | 8 3/4" | 11/16" | 5/8" |
| | 28842 | 1765XC | 1011980XC | 2 9/16" | 3 5/16" | 3 9/16" | 2 13/16" | 8 3/4" | 11/16" | 5/8" |
| | 28843 | 1780XC | 1010840XC | 2 13/16" | 3 3/4" | 4 " | 3 1/8" | 9 3/4" | 11/16" | 5/8" |
| Tradesman | 28805 | 1745 | 1011990 | 2 3/16" | 2 7/8" | 3 1/16" | 2 7/16" | 7 1/2" | 9/16" | 1/2" |
| | 28806 | 1755 | 1011980 | 2 9/16" | 3 5/16" | 3 9/16" | 2 13/16" | 8 3/4" | 11/16" | 5/8" |
| | 28807 | 1765 | 1011980 | 2 9/16" | 3 5/16" | 3 9/16" | 2 13/16" | 8 3/4" | 11/16" | 5/8" |
| | 28808 | 1780A | 1010840 | 2 13/16" | 3 3/4" | 4 " | 3 1/8" | 9 3/4" | 11/16" | 5/8" |