

# Wet & Dry Ultra Vac<sup>™</sup>



User's Manual

CONTENTS

**Specifications** ..... 4

**Parts & Accessories** ..... 4

**Warnings** ..... 5

**Usage** ..... 5

    Vacuuming Instructions ..... 5

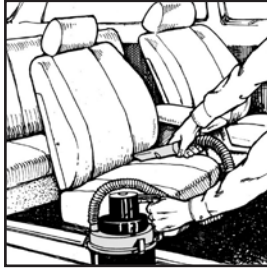
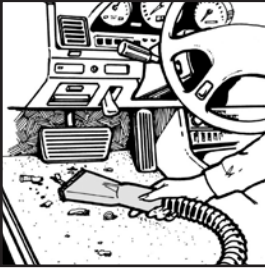
    Inflating Instructions ..... 5

**Care & Maintenance** ..... 5

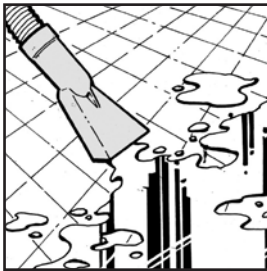


# Wet & Dry Ultra Vac™ by Wagan Tech®

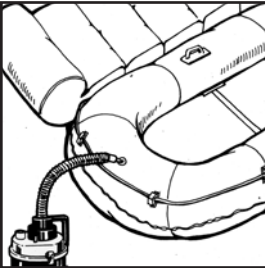
Ideal for cars, boats, recreational vehicles, and equipment for use outdoors.



Cleans carpeted surfaces including hard to reach areas.



Picks up water and other liquids.



Inflates air mattresses, boats, and other sports equipment.

# User's Manual—Read before using this equipment

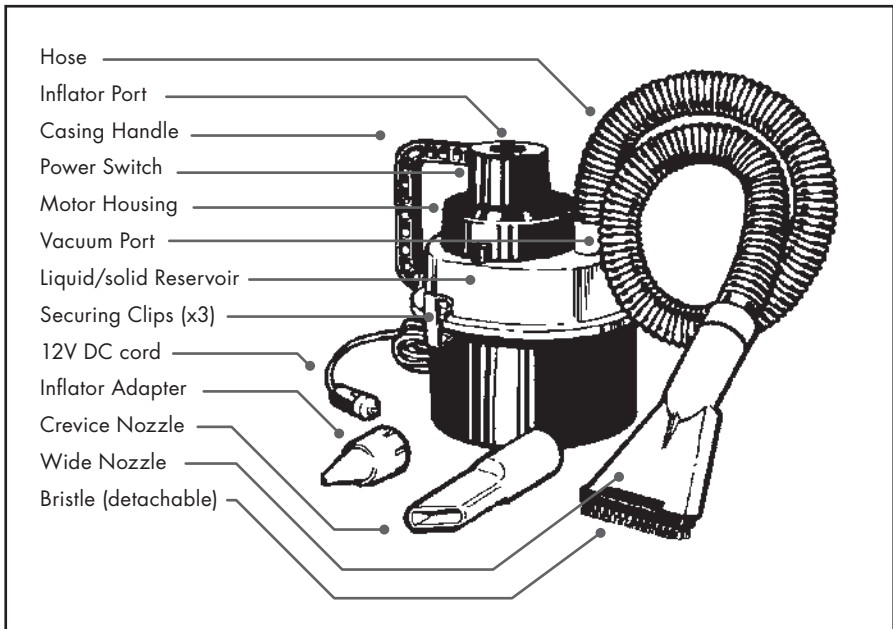
Thank you for purchasing the Wet & Dry Ultra Vac™ by Wagan Tech®. With normal care and proper treatment, it will provide years of reliable service. Please read all operating instructions carefully before use.

## SPECIFICATIONS

- Operating Voltage: 12V
- Operating Wattage: 93W

## PARTS & ACCESSORIES

1. Detach the dirt reservoir by releasing the three clips located around the reservoir.
2. Remove all contents from the reservoir and make sure you have the following:
  - 9-foot long 12V DC cord: plugs directly into the cigarette socket
  - 40-inch flexible hose
  - Wide nozzle for suctioning liquids
  - Bristle: attachable to wide nozzle, ideal for upholstery
  - Crevice nozzle: allows you to clean under seats and other narrow areas
  - Inflating adaptor: for pumping air into sports equipment, air mattresses, etc
3. Resecure the reservoir back in place with the three clips.



# Wet & Dry Ultra Vac™ by Wagan Tech®

---

## WARNINGS

- This vacuum cleaner operates from 12 volt sockets only and is designed for use with the 12 volt cigarette lighter socket in your car.
- You must ensure that all other electrical equipment in the car are switched off when vacuum is in use.

## USAGE

### *Vacuuming Instructions*

1. Select the attachment you wish to use and connect it to one end of the hose.
2. Connect the other end of the hose to the Vacuum Port.
3. Plug the DC cord into your DC socket.
4. Locate the power switch on the motor housing underneath the casing handle and turn the unit on. (Tip: It is a good idea to leave your car running while operating this unit to avoid draining your battery.)
5. When finished, turn the unit off using the same power switch then unplug the DC cord from the DC socket.
6. Clean out dirt, debris, and etc from the reservoir by unlatching the three clips in the same manner as described in "Parts & Accessories".
7. Return vacuum parts back into the canister for storing.

### *Inflating Instructions*

1. Connect the Inflator Adapter to one end of the hose.
2. Connect the other end of the hose to the Inflator Port.
3. Follow steps #3-7 from the "Vacuuming Instructions".

## CARE & MAINTENANCE

1. DO NOT submerge vacuum in water.
2. After using the Wet & Dry Ultra Vac to vacuum up liquid, make sure to clean the reservoir and filter. Let all parts dry fully before storing it away for future use.

