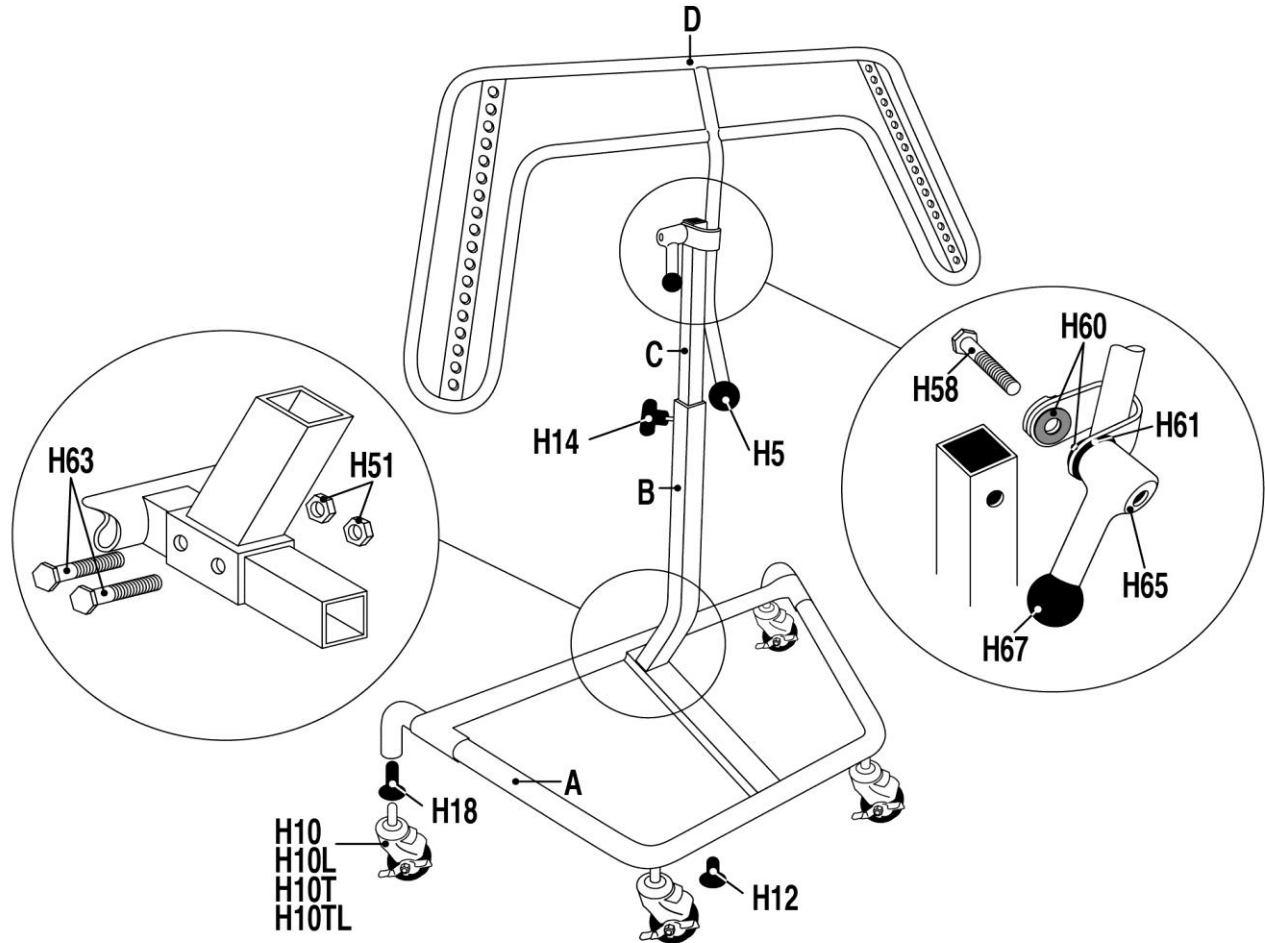




Time Shaver Tools Inc.

WT10 WING THING - PARTS AND ASSEMBLY GUIDE



PART#	WT10 HARDWARE PARTS	QTY.
WT10-	DESCRIPTION	USED
H5	HANDLE, BALL, LARGE, 3/8-16 STUD TYPE	1
H10	CASTER W/ BRAKE, 3' DIA. GRIP RING STEM	4
H10L	CASTER W/ BRAKE, 4' DIA. GRIP RING STEM (OPTION)	4
H10T	CASTER W/ BRAKE, 3' DIA. THREADED STEM (AUG 2016)	4
H10LT	CASTER W/ BRAKE, 4' DIA. THREADED STEM (OPTION)	4
H12	CASTER SOCKET, SMALL (FOR GRIP RING STEM)	2
H14	T-HANDLE 3/8-16 STUD TYPE	1
H18	CASTER SOCKET, MEDIUM, WT10 ONLY	2
H51	NYLOC NUT 5/16-18, FOR UPRIGHT AND LEGS	6
H52	HEX BOLT, 5/16-18 X 1-3/4 FOR LEGS (NOT SHOWN)	4
H58	HEX BOLT, 3/8-16 X 2	1

PART#	WT10 HARDWARE PARTS (CONT.)	QTY.
WT10-	DESCRIPTION	USED
H60	WASHER, FRICTION	2
H61	NYLON WASHER 3/8	1
H63	HEX BOLT, 5/16-18 X 2-1/4	2
H65	ALUM. KNOB INCL. BALL KNOB & WASHER	1
H67	BALL HANDLE, SMALL 3/8-16 STUD TYPE	1
A	BASE	1
B	UPRIGHT	1
C	SLIDER	1
D	WING TOP	1
WT10 INCLUDED EXTENSIONS (NOT SHOWN)		
EX02S	EXTENSION BKT, PAIR W/HANDLES, 9" LONG	1