



Time Shaver Tools Inc.



WK9 WORKTOP KIT

Assembly Guide



Time Shaver Tools Inc.



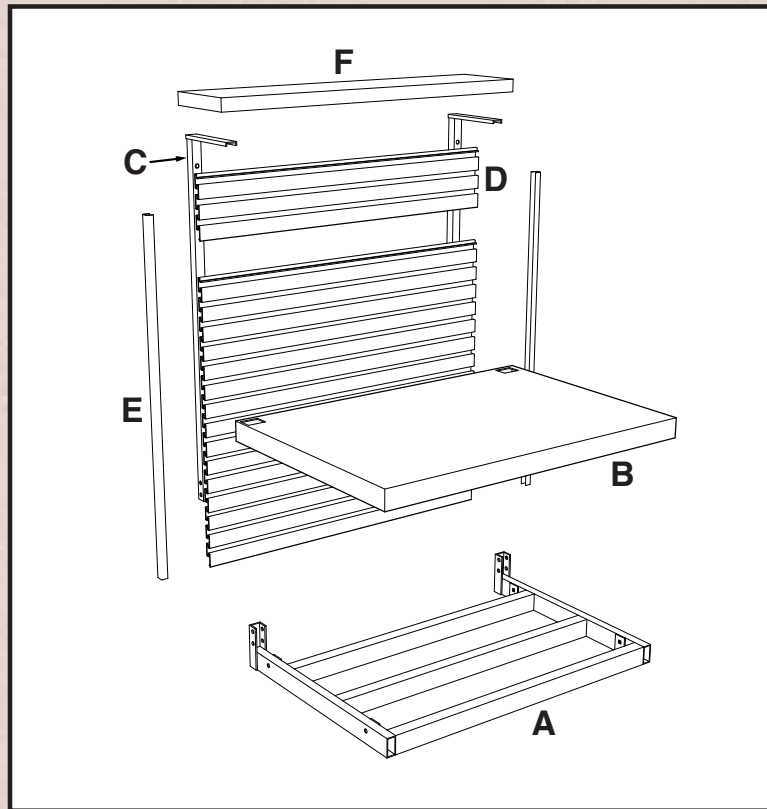
Tools and supplies needed for assembly:

- Cordless drill with #2 Phillips bit
- 5/16" drill bit
- #2 Phillips screwdriver
- Bubble level
- Sharp felt tip marker
- 3/8" and 7/16" wrenches
- Plastic tip hammer
- Wide masking tape
- Pure silicone sealer in caulking gun

Prepare Tool Chest:

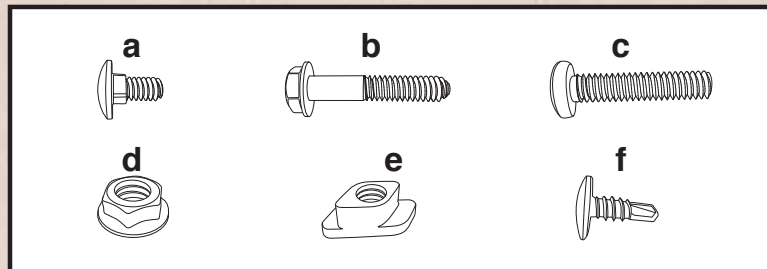
- Confirm that top dimensions of your rolling tool chest are 26-27" WIDE X 18" DEEP.
- Make sure that SWIVEL CASTERS and SIDE HANDLE are on your right when facing front of chest.
- Begin with tool chest on a level floor.
- Remove top drawer.

WK9 WORKTOP KIT Schematic Illustration



Parts list

- | | |
|-------------------|-------------------------|
| A. Main frame (1) | D. Slatwall section (6) |
| B. Countertop (1) | E. Side molding (2) |
| C. Upright (2) | F. Shelf (1) |



Hardware List

- | | |
|-----------------------------|-----------------------------|
| a. Short carriage bolt (4) | d. Steel nut (8) |
| b. Hex head bolt (4) | e. Aluminum nut (12) |
| c. Long Phillips screw (12) | f. Drill point Phillips (8) |

WK10 WORKTOP KIT Step by step



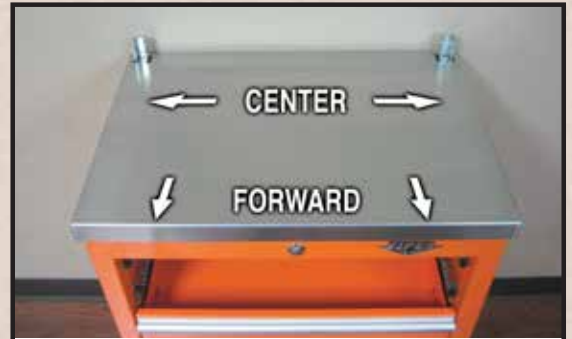
1. Place MAIN FRAME (A) on tool chest in the CENTER and against BACK lip. Mark the location of four square mounting holes on top of tool chest. Remove MAIN FRAME.



2. Drill 5/16" (8mm) holes at four marked locations. Attach MAIN FRAME to top of chest with SHORT CARRIAGE BOLTS (a) and NUTS (d). Tighten NUTS inside tool chest.



3. Apply a 1/8" bead of pure silicone from a caulking gun onto top surfaces of MAIN FRAME. Dab some silicone around carriage bolt heads to ease disassembly if needed.



4. Set COUNTERTOP onto MAIN FRAME. Press down to COMPLETELY FLATTEN silicone. Slide COUNTERTOP FULLY FORWARD with equal overhang on sides. Use masking tape to hold COUNTERTOP while silicone dries.



5. Place UPRIGHTS (C) into MAIN FRAME BRACKETS with top SHELF SUPPORTS pointing toward front of tool chest. Attach UPRIGHTS with LONG HEX BOLTS (b) and FLANGE NUTS (d). Finger tighten nuts.

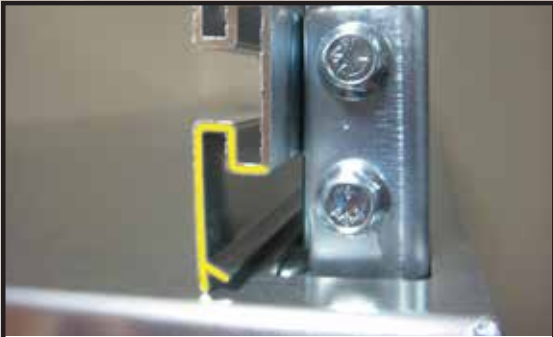


6. Insert LONG PHILLIPS SCREWS (c) into holes in UPRIGHTS with screw heads at the back. Thread ALUMINUM NUTS (e) one or two turns onto each screw.

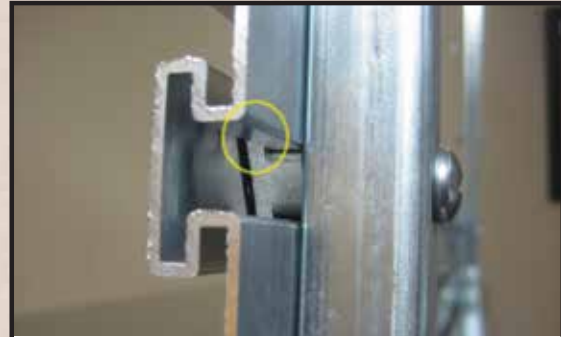


Time Shaver Tools Inc.

WK10 WORKTOP KIT Step by step



7. Set the bottom SLATWALL PANEL (D) on top of counter with the wide section down as shown.



8. Rotate first SLATWALL PANEL up onto the two lowest ALUMINUM NUTS. Tighten SCREWS just enough to keep ALUMINUM NUTS engaged in SLATWALL PANEL.



9. Install the other five SLATWALL PANELS using the same orientation as the first (Fig. 7). Tap edge of panels with plastic hammer to align vertically. Tighten LONG PHILLIPS SCREWS on UPRIGHTS.



10. Check slatwall face for vertical and tighten HEX BOLTS and NUTS on UPRIGHTS.



Time Shaver Tools Inc.



11. Attach **LONG SIDE MOLDINGS (E)** to the edges of **SLATWALL PANELS**. Install a **DRILL POINT PHILLIPS SCREW (f)** on each **MOLDING** in the location shown (back).



12. Place **SHELF (F)** on top of **UPRIGHTS**. Center **SHELF** side to side above **SLATWALL**. Slide **SHELF** all the way forward. Install two **DRILL POINT SCREWS** through top of **SHELF** into each **UPRIGHT** as shown.

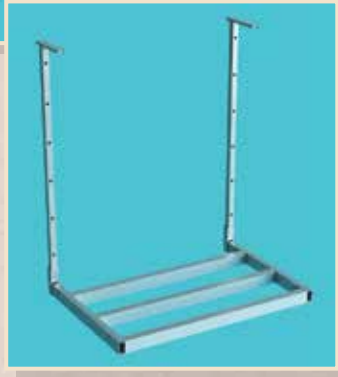


13. Install a **DRILL POINT SCREW** into each side molding on the back side near the top.



14. Reinstall top drawer to complete assembly.

THREE WORKTOP KIT MODELS



WK9

- 27-1/4" Wide Counter, Slat Wall and Shelf
- Fits Tool Cabinets: 26" or 27" W X 18" D
- Sturdy Steel Frame
- Mounting Hardware



WK10

- 42" Wide Counter, Slat Wall and Shelf
- Fits Tool Cabinets: 26" or 27" W X 18" D
- Trash Opening with Stainless Trim Ring
- Main Frame, Full Side Frame, Slat Covers
- Printed Instructions
- Mounting Hardware



WK11

- 42" Wide Counter, Slat Wall and Shelf
- Fits Tool Cabinets: 41" or 42" W X 18" D
- Main Frame, Upper Side Frame
- Printed Instructions
- Mounting Hardware

CHOOSE FROM THREE **WORKTOP KIT** MODELS



- Three Worktop Kit models fit on top of widely available rolling tool cabinets
- Organize tools and supplies around your process placing everything within easy reach
- Sturdy steel frame installs in minutes and firmly supports counter and slatwall panel
- Heavy gauge aluminum countertop and shelf designed for everyday commercial use
- Double sided aluminum slatwall allows easy access to frequently used tools and supplies
- Special slatwall nuts available to provide threaded mounting points for bolt-on accessories
- Fits popular slatwall accessories such as hooks, air tool hangers, parts bins, shelves and more



Time Shaver Tools Inc.

Learn more about tool chests and cabinets we have.