



**Time Shaver Tools Inc.**



# **WK10 WORKTOP KIT**

*Assembly Guide*



# Time Shaver Tools Inc.



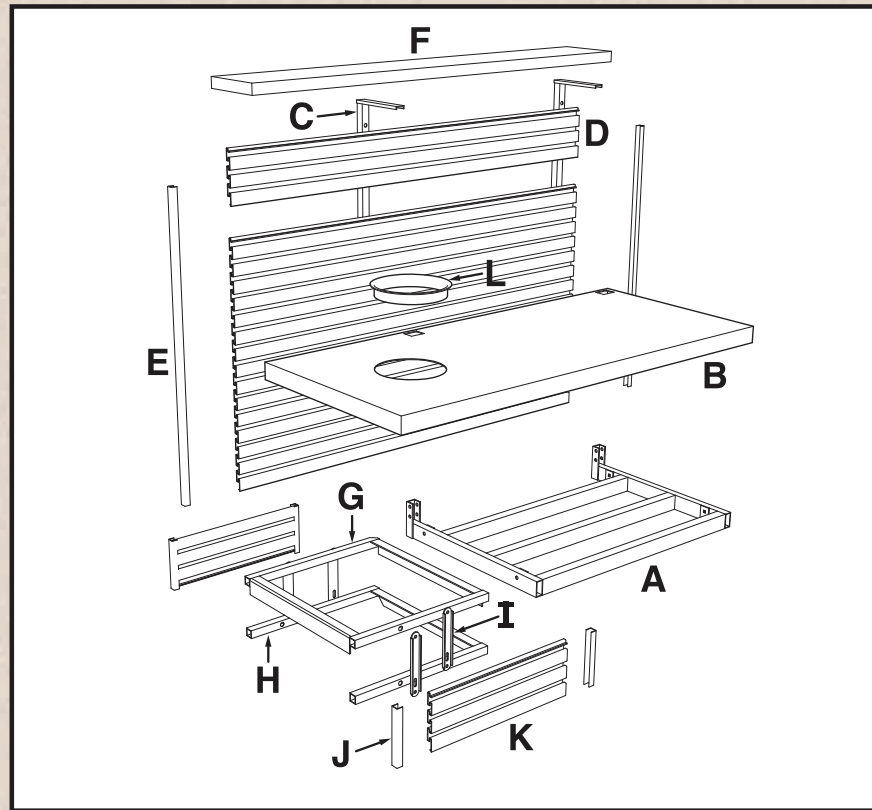
## Tools and supplies needed for assembly:

- Cordless drill with #2 Phillips bit.
- 5/16" drill bit.
- #2 Phillips screwdriver.
- Bubble level.
- Sharp felt tip marker.
- 3/8" and 7/16" wrenches.
- Plastic tip hammer.
- Wide masking tape.
- Pure silicone sealer in caulking gun.

## Prepare Tool Chest:

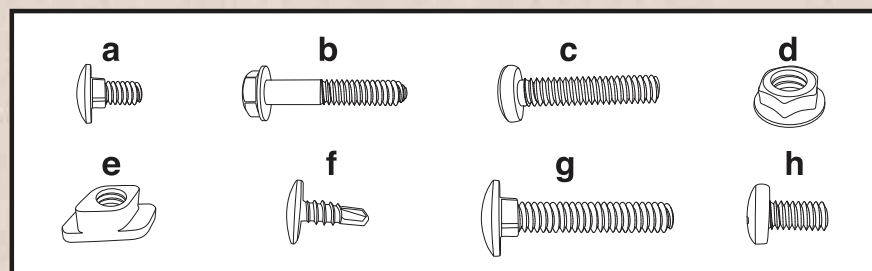
- Confirm that top dimensions of your rolling tool chest are 26-27" WIDE X 18" DEEP.
- Make sure that SWIVEL CASTERS and SIDE HANDLE are on your right when facing front of chest.
- Begin with tool chest on a level floor.
- Remove top two drawers.

# WK10 WORKTOP KIT Schematic Illustration



## Parts list

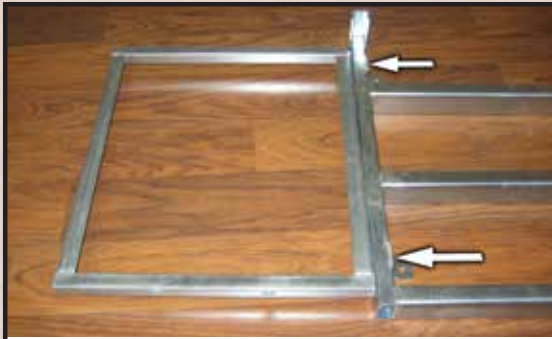
- |                                 |                                    |
|---------------------------------|------------------------------------|
| <b>A.</b> Main frame (1)        | <b>G.</b> Upper side frame (1)     |
| <b>B.</b> Countertop (1)        | <b>H.</b> Lower side frame (1)     |
| <b>C.</b> Upright (2)           | <b>I.</b> Side frame connector (4) |
| <b>D.</b> Slatwall section (6)  | <b>J.</b> Short side molding (4)   |
| <b>E.</b> Long side molding (2) | <b>K.</b> Slatwall side cover (2)  |
| <b>F.</b> Shelf (1)             | <b>L.</b> Trim ring (1)            |



## Hardware List

- |                                    |                                     |
|------------------------------------|-------------------------------------|
| <b>a.</b> Short carriage bolt (4)  | <b>e.</b> Aluminum nut (16)         |
| <b>b.</b> Hex head bolt (4)        | <b>f.</b> Drill point Phillips (12) |
| <b>c.</b> Long Phillips screw (12) | <b>g.</b> Long carriage bolt (2)    |
| <b>d.</b> Steel nut (12)           | <b>h.</b> Short Phillips screw (14) |

# WK10 WORKTOP KIT Step by step



1. Connect UPPER SIDE FRAME (G) to MAIN FRAME (A) with LONG CARRIAGE BOLTS (g) and FLANGE NUTS (d). Insert BOLTS from right to left. Hand tighten NUTS.



2. Place MAIN FRAME (A) on top of tool chest. Push FRAME against the LEFT and BACK lip of tool chest. Mark the location of four square mounting holes on top of tool chest. Remove MAIN FRAME.



3. Drill 5/16" (8mm) holes at four marked locations. Attach MAIN FRAME to top of chest with SHORT CARRIAGE BOLTS (a) and NUTS (d). Tighten NUTS inside tool chest.



4. Tap UPPER SIDE FRAME (G) to a centered position on side of tool chest. Tighten NUTS (d) connecting UPPER SIDE FRAME to MAIN FRAME.



5. Attach all four CONNECTOR BRACKETS (I) to UPPER and LOWER SIDE FRAMES with PHILLIPS SCREWS (h). Position CONNECTOR BRACKETS with ribs facing out and long slots down. Gently tighten SCREWS.



6. Check top of UPPER SIDE FRAME for level. Bend UPPER SIDE FRAME up or down if necessary to make level.



7. On LOWER SIDE FRAME, mark two hole locations that avoid reinforcements inside tool chest wall. Example: For Viper tool chest, mark the two inner holes in bracket.



8. Rotate LOWER SIDE FRAME up. Drill two marked holes with 5/16" drill. Rotate LOWER SIDE FRAME down. Fasten LOWER SIDE FRAME with PHILLIPS SCREWS (f) and NUTS (d). Tighten NUTS inside tool chest. Tighten CONNECTOR BRACKET SCREWS.



9. Apply a 1/8" bead of pure silicone from a caulking gun onto top surfaces of MAIN FRAME and UPPER SIDE FRAME. Dab some silicone around carriage bolt heads to ease disassembly if needed.



10. Set COUNTERTOP onto MAIN FRAME. Press down firmly to COMPLETELY FLATTEN silicone. Slide COUNTERTOP FULLY FORWARD and to the LEFT. Use masking tape to hold COUNTERTOP to side and back of tool chest while silicone dries.

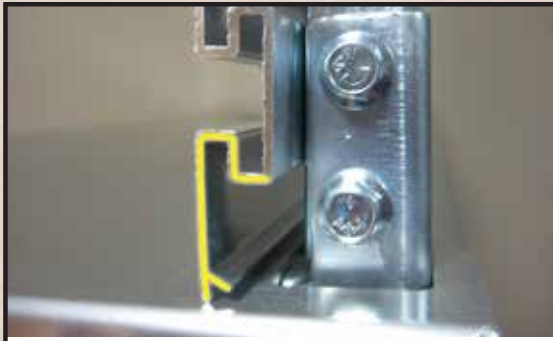


11. Place UPRIGHTS (C) into MAIN FRAME BRACKETS with top SHELF SUPPORTS pointing toward front of tool chest. Attach UPRIGHTS with LONG HEX BOLTS (b) and FLANGE NUTS (d). Finger tighten nuts.

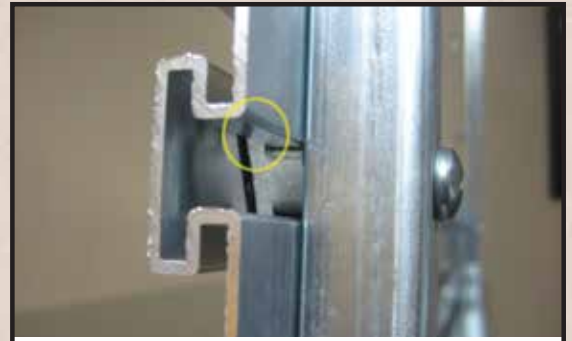


12. Insert LONG PHILLIPS SCREWS (c) into holes in UPRIGHTS with screw heads at the back. Thread ALUMINUM NUTS (e) one or two turns onto each screw.

# WK10 WORKTOP KIT Step by step



13. Place the bottom SLATWALL PANEL (D) on the COUNTERTOP with the highlighted section down as shown.



14. Rotate first SLATWALL PANEL up onto the two lowest ALUMINUM NUTS. Tighten SCREWS just enough to keep ALUMINUM NUTS engaged in SLATWALL PANEL. Keep all SCREWS slightly loose.



15. Stack up five more SLATWALL PANELS using same orientation as the first (Fig. 13). Tap sides with plastic hammer to align sides vertically. Tighten LONG PHILLIPS SCREWS on UPRIGHTS.



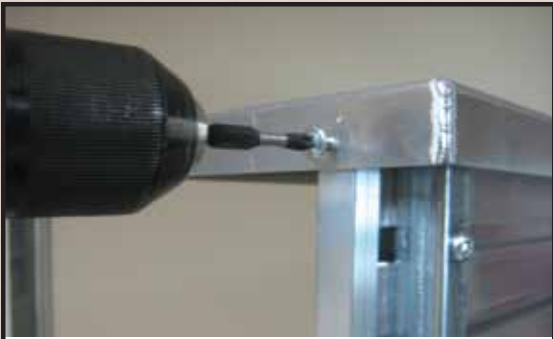
16. Check slatwall face for vertical and tighten HEX BOLTS and NUTS on UPRIGHTS.



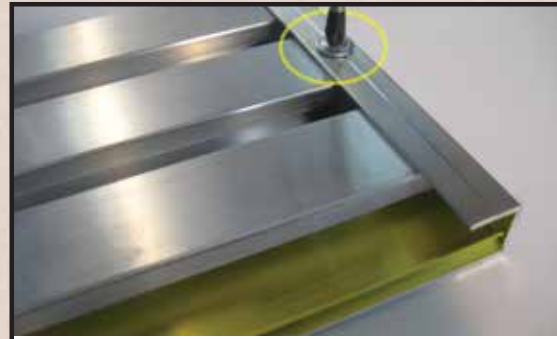
17. Attach LONG SIDE MOLDINGS (E) to the edges of SLATWALL PANELS. Install a DRILL POINT PHILLIPS SCREW (f) on each MOLDING on the back side, in the location shown.



18. Place SHELF (F) on top of UPRIGHTS. Center SHELF side to side above SLATWALL. Slide SHELF all the way forward. Install two DRILL POINT SCREWS through top of SHELF into each UPRIGHT as shown.



19. Install a **DRILL POINT SCREW** into each side of the shelf. The screw should go through shelf lip into the center of each **SIDE MOLDING**.



20. Attach **SHORT SIDE MOLDINGS (J)** to **SLATWALL SIDE COVERS (K)**. Install one **DRILL POINT SCREW** on back of each molding. Highlighted yellow area in photo indicates back of **SLATWALL SIDE COVER**.



21. Install four **ALUMINUM NUTS** and **SHORT PHILLIPS SCREWS** into slots in **CONNECTOR BRACKETS**. Leave nuts loose.



22. Mount **SIDE COVERS** onto **ALUMINUM NUTS**. Align **SLATWALL SIDE COVERS** parallel with outside lip of **COUNTERTOP** and tighten four **PHILLIPS SCREWS**.



23. Apply a small bead of silicone to the underside of the **TRIM RING (L)** and push it into the hole in the **COUNTERTOP**.



24. Reinstall top two drawers to complete assembly.

## CHOOSE FROM THREE **WORKTOP KIT** MODELS



- Three Worktop Kit models fit on top of widely available rolling tool cabinets
- Organize tools and supplies around your process placing everything within easy reach
- Sturdy steel frame installs in minutes and firmly supports counter and slatwall panel
- Heavy gauge aluminum countertop and shelf designed for everyday commercial use
- Double sided aluminum slatwall allows easy access to frequently used tools and supplies
- Special slatwall nuts available to provide threaded mounting points for bolt-on accessories
- Fits popular slatwall accessories such as hooks, air tool hangers, parts bins shelves and more



# Time Shaver Tools Inc.

Learn more about tool chests and cabinets we have.