

# ELECTIC TRANSFER PUMP

## INSTRUCTIONS AND PRECAUTIONS

Read all instructions and precautions before use.

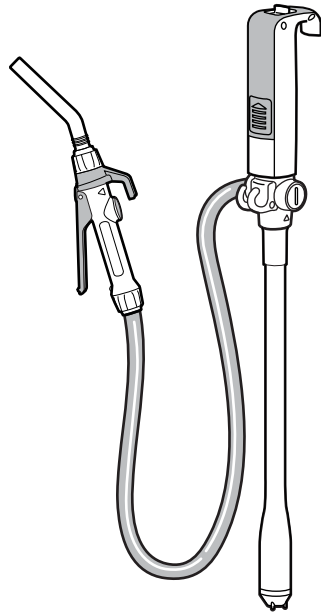
**MODEL: TREP01-02**

(TREP02 INCLUDES FILTER AND SHOWER ADAPTORS)

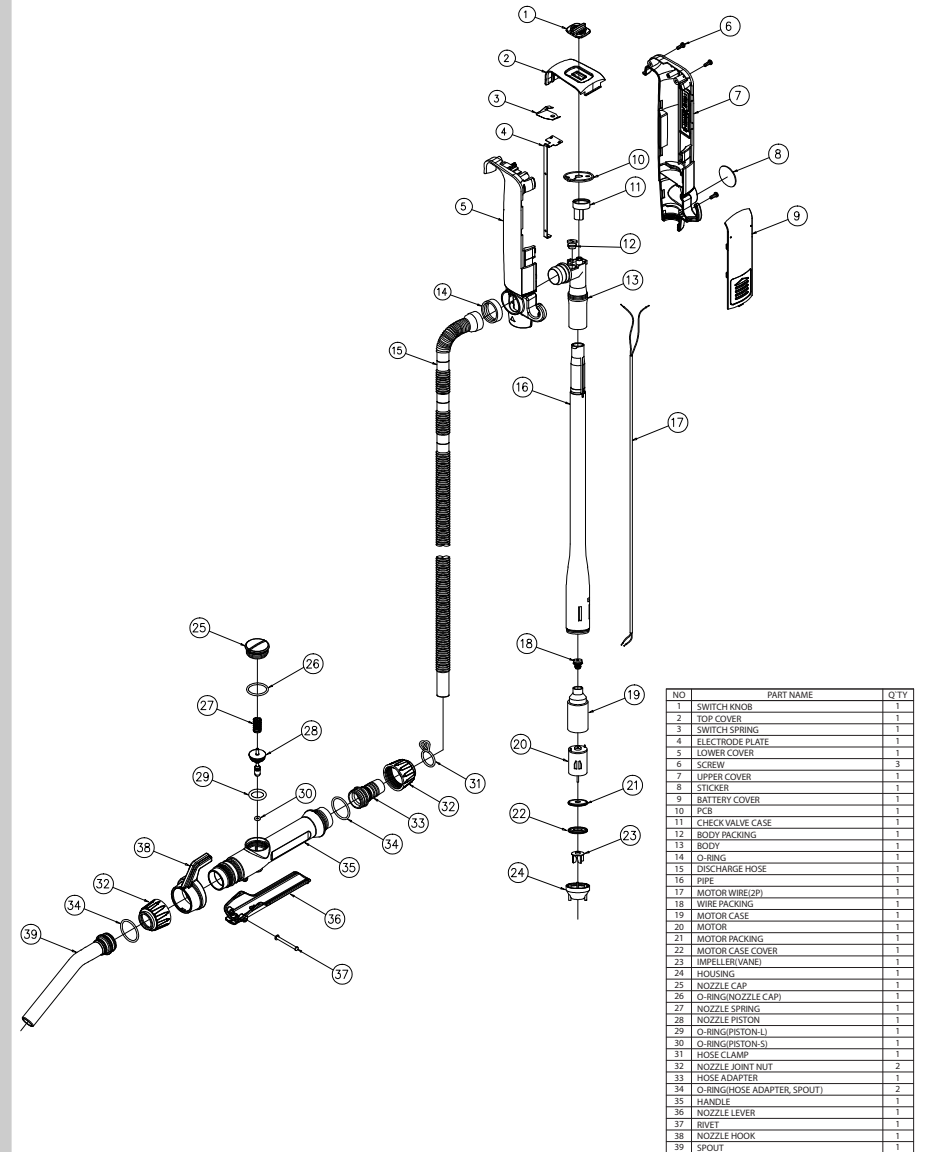
Design patent U.S.A D755,925  
D777,007

Design patent EU 002681833-0001  
002681833-0002

Design patent Japan 1534487  
1538043



## ASSEMBLY DIAGRAM



\* Specifications are subject to change without notice.

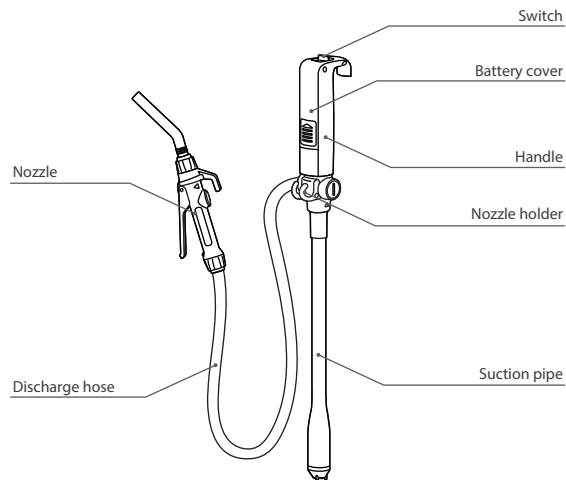
## Precautions for Use

These instructions are to ensure the product is used correctly, safely, and to prevent any possible risk or damage to the user and/or others people. Our company shall not take any responsibility for any failure of product, malfunction and damages caused by improper use by the user or third parties.

<p><b>⚠ DANGER</b> If the directions of this sign are not followed, fatal accidents can happen and the user may die or get seriously injured.</p>	<p><b>⚠ WARNING</b> If the directions of this sign are not followed, accidents can happen or the user can get injured.</p>	<p><b>⚠ CAUTION</b> If the directions of this sign are not followed, the product can get damaged or the user can get injured.</p>
---	--	---

<b>⚠ DANGER</b>	<b>⚠ WARNING</b>	<b>⚠ CAUTION</b>
Do not use for concentrated acids.	Do not refuel directly while the vehicle or equipment is turned on.	After using the pump, do not keep it on its side or upside down.
Only use on applicable liquids written on the specifications.	Do not leave the pump unattended.	Make sure to remove any left-over liquid in the discharge hose after each use.
Do not use this pump for transferring the following liquids: Aceton, Benzen, Cresol, Ethyl, Phenol, Methyl ethyl, Concentrated caustic sodaliquid, Nitric acid, Hydrochloric acid, Sulfuric acid, thinner or solvents, Etc.	Make sure to use the pump on even surface.	Do not alter or disassemble the pump.
	Do not allow children to operate the product without adult supervision.	Do not run the pump 'dry' or let the pump idle without transferring.
		Make sure to turn off the power after using the pump.
		Do not shock the pump.
		Do not use deteriorated or contaminated liquids and fuels.
		Do not place the pump in a wet area.
		Do not use this pump for hot liquids above 40°C (104°F).

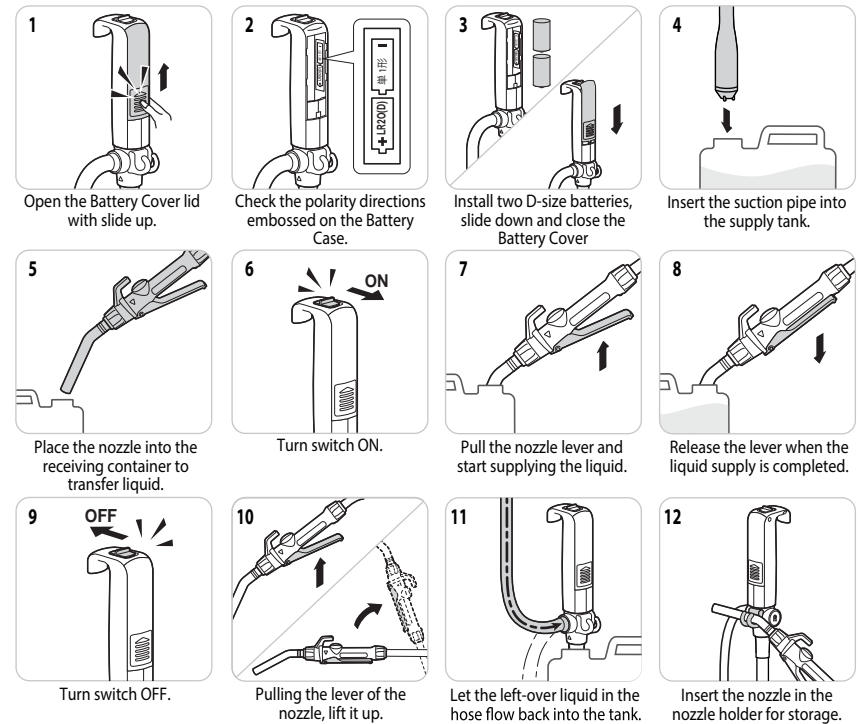
## Names of Parts



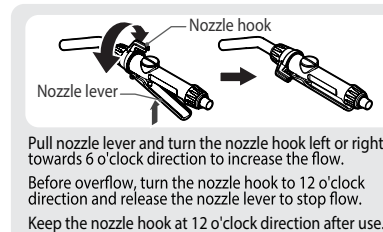
## Specifications (MODEL: TREP01 - 02)

Delivery volume	Approx. 9.5 LPM (2.5 GPM)	Operating temperature	+5°C ~ 40°C (41°F ~ 104°F)
Suction pipe length	Approx. 446mm (17.6")	Battery	D X 2 (not included)
Discharge hose length	Approx. 1m (3.3ft)	Electrical supply	3VDC, 3A
Major materials	PP, PE, ACETAL, NBR	Altitude	2000m
Pollution Degree	2	Installation Category	I
Applicable liquids	Gasoline, Diesel, DEF(AdBlue), Water, Kerosene, Antifreeze, Windshield washer fluid, Mild detergents, Agricultural chemicals, Light oils.		

## Directions for Use



## How to use flow controller



**⚠ CAUTION!**

**DO NOT LEAVE PUMP UNATTENDED WITH NOZZLE IN LOCKED POSITION WHILE REFUELING.**

FAILURE TO DO SO CAN RESULT IN OVERFLOW CAUSING **DEATH OR SERIOUS INJURY.**

ALWAYS REMOVE NOZZLE FROM LOCKED POSITION AFTER REFUELING AND TURNING OFF.