

SUNEX HD

More Power Less Noise

SX8200

SURFACE BLASTER KIT

Product Safety Information



Save these instructions

CE

⚠ WARNING	
	Read this manual before operating tool
	Always wear eye protection when operating this tool (users and bystanders)
	Always wear hearing protection when operating this tool (users and bystanders)
	Always wear face protection when operating this tool (users and bystanders)
	Rated RPM of accessory must exceed the maximum tool RPM shown
	Avoid prolonged exposure to vibration

⚠ WARNING



Read and understand all instructions. Failure to follow all instructions listed below, may result in electric shock, fire, explosion and/or serious personal injury. It is the responsibility of the owner to make sure all personnel read this manual prior to using the device. It is also the responsibility of the device owner to keep this manual intact and in a convenient location for all to see and read. If the manual or product labels are lost or not legible, contact Sunex Tools for replacements. If the operator is not fluent in English, the product and safety instructions shall be read and discussed with the operator in the operator's native language by the purchaser/owner or his designee, making sure that the operator comprehends its contents.

Always inspect, operate, and maintain this tool in accordance with American National Standards Institute Safety Code of Portable Air Tools (ANSI B186.1) and any other applicable safety codes and regulations.



These tools are rated at 90 psig / 6.2 bar max air pressure for safety, top performance, and maximum durability of parts; do not exceed this pressure while the tool is running.

Always shut off air supply, drain hose of air pressure and disconnect tool from air supply when not in use, before changing accessories, or when making repairs.

Never direct air at yourself or anyone else.



Always wear impact-resistant eye and face protection when operating or performing maintenance on this tool (users and bystanders).



High sound levels can cause permanent hearing loss.



Always use hearing protection when using this tool as recommended by your employer or OSHA regulation users and bystanders).



Do not wear jewelry or loose fitting clothes.

Do not use quick disconnect couplings at tool. See operating instructions for proper set up.



Whipping hoses can cause serious injury. Always carefully check for damaged or loose hoses and fittings before operating this tool.



Avoid direct contact with accessories during and after use. Gloves should be worn to reduce the risk of cuts or burns.

Never run the tool off of the work. The tool may run too fast and cause the accessory to be thrown off of the tool.

Use only Sunex approved accessories.



RPM OF THE ACCESSORY MUST EXCEED TOOL RPM. Use accessories rated at 4,000 RPM or higher.

Never run the tool unless the abrasive is in contact with the workpiece.

There is a risk of electrostatic discharge if used on plastic and other non-conductive materials.

Slipping, tripping, and/or falling while operating air tools can be a major cause of serious injury or death. Be aware of your surroundings and any excess hose left on the walking or working surface.



Pneumatic tools can cause vibration in use. Vibration, repetitive motions or uncomfortable positions over extended periods of time may be harmful to your hands and arms. Discontinue use of tool if discomfort, tingling feeling or pain occurs. Consult a physician before resuming use if any of these symptoms occur.



Do not stretch or overreach while using this tool.

If tool appears to malfunction, remove from service immediately and arrange for repair.



Never use tool if there is any chance of coming into contact with line electricity.

Use only Sunex certified spare parts for any repair made to tool. Repairs should only be performed by properly trained persons.

Do not lock, tape or wire the tool valve in the "on/off" position.

Do not allow the exhaust air to come in contact with hot surfaces or flames.

Avoid inhaling dust or handling debris from the work process, which can be harmful to your health. Use dust extraction and wear respiratory protective equipment when working with materials which produce airborne particles.

Some dust created by power sanding, sawing, grinding, drilling and other construction activities contains chemicals known to the State of California to cause cancer and birth defects or other reproductive harm. Some examples of these chemicals are:

- Lead from lead based paints
- Crystalline silica bricks and cement and other masonry products
- Arsenic and chromium from chemically-treated lumber

Your risk from these exposures varies, depending on how often you do this type of work. To reduce your exposure to these chemicals: work in a well ventilated area, and work with approved safety equipment, such as those dust masks that are specially designed to filter out microscopic particles.

This product may contain one or more chemicals known to the State of California to cause cancer and birth defects or other reproductive harm. *Wash hands thoroughly after handling.*

SAFETY INSTRUCTIONS - DO NOT DISCARD - GIVE TO USER

Additional Safety Warnings

Do not modify this tool or its accessories.



Daily measure the air tool speed with tachometer to make sure it is not greater than the RPM stated on the backing pad, drum or abrasive.



This tool is not recommended for use in explosive atmospheres or underwater use.

Operators and maintenance personnel must be physically able to handle the bulk, weight, and power of this tool.

This tool is for professional use only.

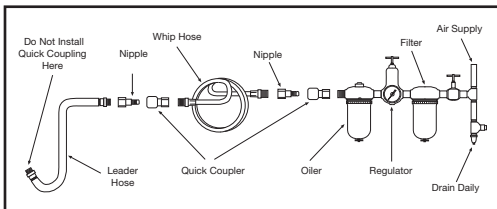
Instruction Manual

This tool is designed for removal of paint, rust, gaskets and pin stripes. No other use is permitted.

Air Supply Requirements

Tool is designed to operate at 90 psig (6.2 bar) at free speed measured at the tool, of clean, dry air. Operating this tool at higher pressures will drastically reduce the tool life and could cause injury.

The air inlet thread on this tool is a standard 1/4" NPT. Line pressure should be increased for any unusually long air hose run (over 25 feet). Minimum hose diameter should be 3/8" I.D. and all fittings should have the same inside diameter. See diagram below for proper air supply setup.



Lubrication

Lubricate the tool each day after use with quality SAE #10 air motor oil. Add the oil to the air inlet or into the hose at the nearest connection to the air supply, then run the tool until all excess oil is expelled from the exhaust. Total oil quantity needed for this procedure is approximately 1 ounce. If using an air line lubricator adjust to two drops per minute.

EC DECLARATION OF CONFORMITY

We, Sunex International Inc., declare under our sole responsibility that the product to which this declaration relates, is in conformity with the requirements of the Council Directive of June 1998 on the approximation of the laws of the Member States relating to machinery. (EN792, 98/37/EC)

Harmonized Standards Applied:

EN 792-6

National Standards Applied:

ISO 8662-7, ISO 15744-2002

Machine Name:

SX8200 Surface Blaster

Serial No.:

TS012010 or higher

Technical Data:

Spindle Thread Size: 9mm

Free Speed: 4,000 RPM

Air Pressure: 90 psig (6.2 bar)

Noise and Vibration Declaration

Tool produces a noise level (no load) of 86 dBA sound pressure with 3 dBA uncertainty per EN ISO15744-2002. Vibration level is <0.5 m/s² tested per EN 28662-1 & EN28662-7:1997

Signature of Issuer:

Name and Position of Issuer: John Stratton, Product Manager
Sunex International Inc.

Date of Issue: January 4, 2012

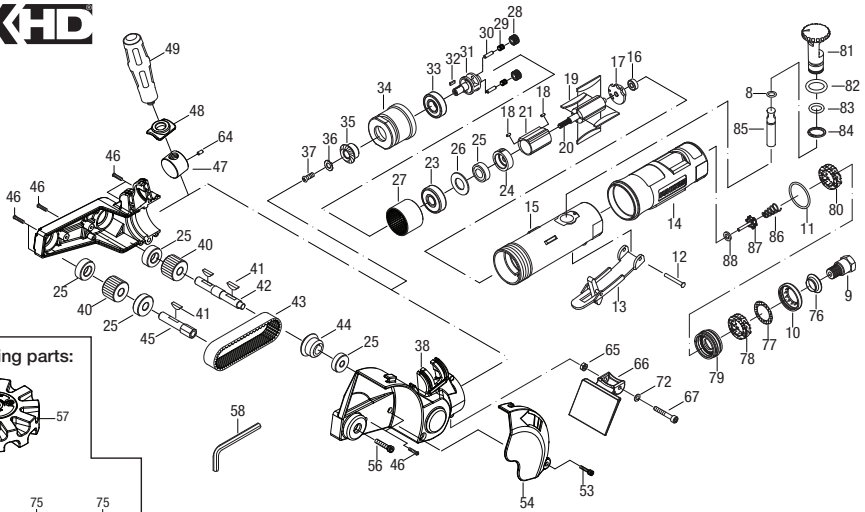
Specifications

Spindle Thread Size	9mm
Free Speed	4,000 RPM
Length	10" (254mm)
Weight	2.7 Lbs. (1.22 kg)
Avg. Air. Cons.	3.5 cfm (99.1 l/min)
Air Inlet	1/4" NPT
Min. Hose Size	3/8" I.D. (10mm)

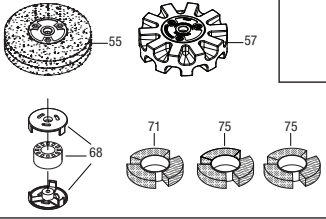
SUNEX HD

SX8200

SURFACE BLASTER KIT



Kit includes the following parts:



REF. NO.	PART NO.	DESCRIPTION	QTY.
8	RS246002	O-Ring (3.5 x 1.4)	1
9	RS820009	Air Inlet	1
10	RS820010	Exhaust Sleeve	1
11	RS31511	O-Ring (26.7 x 1.78)	1
12	RS621011	Spring Pin	1
13	RS520113	Lever	1
14	RS820014	Protecting Rubber	1
15	RS820015	Housing	1
16	RS30516	Bearing (696ZZ)	1
17	RS31517	Rear Plate	1
18	RS288323	Pin	2
19	RS288320	Rotor Blade	4
20	RS315B21	Rotor (9T)	1
21	RS31521	Cylinder	1
23	RS30524	Bearing (608ZZ)	5
24	RS31523	Front Plate	1
25	RS227B25	Bearing (6001ZZ)	1
26	RS31525	Washer	1
27	RS103927	Thread Ring Gear	1
28	RS103928	Idler Gear (16T)	2
29	RS103929	Needle Bearing	2
30	RS31528	Idler Gear Pin	2
31	RS103931	Gear Plate	1
32	RS103932	Sliding Key	1
33	RS29120	Bearing (6200ZZ)	1
34	RS103934	Clamp Nut	1
35	RS103935	Bevel Gear	1
36	RS700MB36	Washer	1
37	RS700MB37	Screw	1
38	RS103938	Plastic Housing	1
40	RS103940	Toothed Pulley	2
41	RS700MB41	Key (3 x 13)	3
42	RS103942	Belt Drive Shaft	1
43	RS103943	Toothed Belt	1
44	RS103944	Left Bevel Gear (20T)	1
45	RS103945	Belt Drive Shaft	1

REF. NO.	PART NO.	DESCRIPTION	QTY.
46	RS103946	Screw (3 x 18L)	11
47	RS103947	Nut	1
48	RS103948	Handle Ring	1
49	RS103949	Handle	1
53	RS103953	Screw	1
54	RS103954	Cover	1
56	RS820056	Screw (1/4" x 28 UNF x 7/8")	1
58	RS103958	Hex Wrench (3/16")	1
64	RS103964	Pin (3 x 5)	1
65	RS700MB65	Nut	1
66	RS700MB66	Stop Board	1
67	RS700MB67	Screw	1
72	RS700MB72	Washer	1
76	RS103740	Muffler Body	1
77	RS103741	Stainless Mesh	1
78	RS103744	Silencer	1
79	RS103743	Muffler	1
80	RS820080	Silencer	1
81	RS103735	Regulator	1
82	RS288302	O-Ring (P-10)	1
83	RS315B03	O-Ring (P-9)	1
84	RS288304	Snap Ring	1
85	RS820085	Valve Stem	1
86	RS103745	Spring	1
87	RS103746	Valve	1
88	RS103747	Washer	1
	RSSX8200KCS	Blow Mold Case Only (not shown)	1
	RSSX8200PLK	Product Label Kit (not shown)	1

ITEMS INCLUDED IN KIT SX8200

55	8200SW	Stripping Wheel	1
57	8200REW	Eraser Wheel	1
68	8200HUB	Adapter Set	1
71	8200WWF	Wire Wheel (Fine)	1
75	8200WWC	Wire Wheel (Coarse)	2

View other air specialty tools made by Sunex on our website.