



SX556-2

1" DRIVE IMPACT WRENCH
WITH 2" ANVIL

SX556-6

1" DRIVE IMPACT WRENCH
WITH EXTENDED 6" ANVIL



! WARNING



- ALWAYS READ INSTRUCTIONS BEFORE USING POWER TOOLS
- ALWAYS WEAR APPROVED SAFETY GOGGLES AND HEARING PROTECTION
- AVOID PROLONGED EXPOSURE TO VIBRATION

! WARNING

Some dust created by power sanding, sawing, grinding, drilling, and other construction activities contains chemicals known to cause cancer, birth defects or other reproductive harm. Some examples of these chemicals are:

- lead from lead-based paints,
- crystalline silica from bricks, cement and other masonry products, and
- arsenic and chromium from chemically-treated lumber.

The risk of exposure to these types of chemicals varies depending on how frequently you work with certain chemicals. To reduce your exposure to these chemicals, work in a well-ventilated area and work with approved safety equipment, such as dust masks that are specifically designed to filter out microscopic particles.

SPECIFICATIONS

Square Drive Size	1" (25.4mm)
Max. Torque	1,600 Ft.-Lbs. (2,169 Nm)
Working Torque.....	100-1,200 Ft.-Lbs. (136-1627 Nm)
Free Speed	4,000 RPM
Avg. Air. Cons.	10 cfm (283 l/min)
Air Inlet	1/2" NPT
Min. Hose Size	1/2" I.D. (12.7mm)
Length (SX556-2).....	15.5" (393.7mm)
Length (SX556-6).....	22.5" (571.5mm)
Weight (SX556-2).....	22.2 Lbs. (10.1 kg)
Weight (SX556-6).....	26.2 Lbs. (11.9 kg)

! WARNING

FAILURE TO OBSERVE THESE WARNINGS COULD RESULT IN INJURY.

THIS INSTRUCTION MANUAL CONTAINS IMPORTANT SAFETY INFORMATION.



READ THIS INSTRUCTION MANUAL CAREFULLY AND UNDERSTAND ALL INFORMATION BEFORE OPERATING THIS TOOL.

- Always operate, inspect and maintain this tool in accordance with American National Standards Institute Safety Code of Portable Air Tools (ANSI B186.1) and any other applicable safety codes and regulations.



- For safety, top performance and maximum durability of parts, operate this tool at 90 psig; 6.2 bar max air pressure with 1/2" diameter air supply hose.



- Always wear impact-resistant eye and face protection when operating or performing maintenance on this tool (users and bystanders).



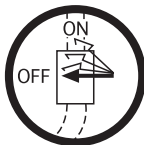
- High sound levels can cause permanent hearing loss. Always use hearing protection as recommended by your employer and

OSHA regulations while using this tool (users and bystanders).

- Keep the tool in efficient operating condition.
- Operators and maintenance personnel must be physically able to handle the bulk, weight and power of this tool.



- Air powered tools can vibrate during use. Extended exposure to vibration, repetitive motions, or uncomfortable positions during use may be harmful to your hands and arms. Discontinue use of tool if discomfort, tingling, or pain occurs. Seek medical advice before resuming use.



- Compressed air can cause severe injury. Never direct air at yourself or others. Always turn off the air supply, drain hose of air pressure and detach tool from air supply before installing, removing or adjusting any part or accessory on this tool, or before performing any maintenance on this tool. Failure to do so could result in injury. Whip hoses can cause serious injury. Always check for and replace any damaged, frayed



or loose hoses and fittings. Do not operate a damaged or worn tool. Do not use quick-detach couplings at tool. See instructions for correct set-up.

- Place the tool on the work before starting the tool. Do not point or indulge in any horseplay with this tool.

- Note direction of rotation BEFORE operating this tool.



- Slipping, tripping and/or falling while operating air tools can be a major cause of serious injury or death. Be aware of excess hose left on the walking or work surface.

- Keep body working stance balanced and firm. Do not overreach when operating the tool.

- Keep tool out of reach of children.

- Anticipate and be alert for sudden changes in motion during use of any power tool.



- Do not carry tool by the hose. Protect the hose from sharp objects and heat.

- Tool shaft may continue to rotate briefly after throttle is released. Avoid direct contact with accessories during and after use. Gloves will reduce the risk of cuts or burns.



- Keep away from rotating end of tool. Do not wear jewelry or loose clothing. Secure long hair. Scalping can occur if hair is not kept away from tool and accessories. Choking can occur if neckwear is not kept away from tool and accessories.



- Do not lubricate tools with flammable or volatile liquids such as kerosene, diesel or jet fuel.



- This tool is not insulated against electric shock.



- This tool must not be used in explosive atmospheres.

Impact wrenches are not torque control devices. Fasteners with specific torque requirements must be checked with suitable torque measuring devices after installation with an impact wrench.

- **Use only impact wrench sockets and accessories on this tool. Do not use hand sockets and accessories.**

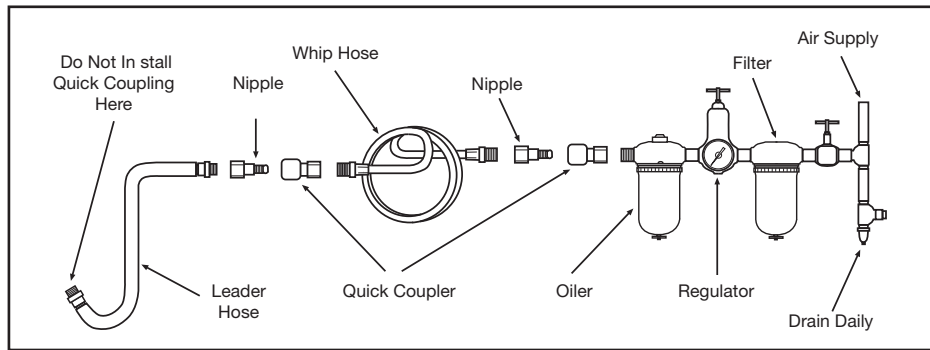
- Do not force tool beyond its rated capacity.

- Do not use (or modify) the tool for any other purpose than that for which it was designed without consulting the manufacturer's authorized representative.

- Do not remove any labels. Replace damaged labels.

- Use accessories recommended by Sunex Tools®.

- This product may contain chemicals known to the State of California to cause cancer and birth defects or other reproductive harm. *Wash hands thoroughly after handling.*



Air Supply...

Tools of this class operate on a wide range of air pressures. We recommend that air pressure measures 90 psig at the air inlet while in use. Low pressure (less than 90 psig 6.2 bar) reduces the speed and performance of all air tools. High pressure (over 115 psig 8.0 bar) exceeds the rated capacity of the tool, which will shorten tool life through faster wear and could cause injury.

Always use clean, dry air. Dust, corrosive fumes, and/or water in the air line will cause damage to the tool. Drain the air tank daily. Clean the air inlet filter screen at least per week.

The air inlet used for connecting air supply, has standard 1/2" NPT American Thread. Line pressure should be increased to compensate for unusually long air hoses (over 25 feet). Minimum hose diameter should be 1/2" I.D. Fittings should have the same inside dimensions and should be tightly secured.

Ensure an accessible emergency shut off valve has been installed in the air supply line and make others aware of its location.

Lubrication...

Lubricate the air motor daily with quality air tool oil. If no air line oiler is used, run 1/2 ounce of air tool oil through the tool by squirting oil into the tool's air inlet or into the nearest connection to the air inlet, reconnecting air supply, and then running tool. Do not use more than 1/2 ounce of oil, as overfilling will reduce the performance of the tool.

Troubleshooting...

Other factors outside the tool may cause loss of power or erratic action. Reduced compressor output, excessive drain on the air line, moisture or restrictions in air pipes or the use of hose connections of improper size or poor conditions may reduce air supply. Grit or gum deposits in the tool may cut power and may be corrected by cleaning the air strainer and flushing out the tool with gum solvent oil or an equal mixture of SAE #10 and kerosene. If outside conditions are in order, disconnect tool from hose and take tool to your nearest authorized service center.

Operation...

This tool is an impacting tool and not a torque meter. When specific torque is required, it must be checked with a torque meter after fitting the fastener with the Impact.

If a nut does not move within five seconds, use a larger size Impact. Do not use Impact Wrench beyond rated capacity, as this can drastically reduce the tool life.

Always turn off the air supply, drain hose of air pressure and detach tool from air supply before installing, removing or adjusting any part or accessory on this tool, or before performing any maintenance on this tool.

NOTE: Actual torque on a fastener is directly related to joint hardness, tool speed, condition of socket and the time the tool is allowed to impact.

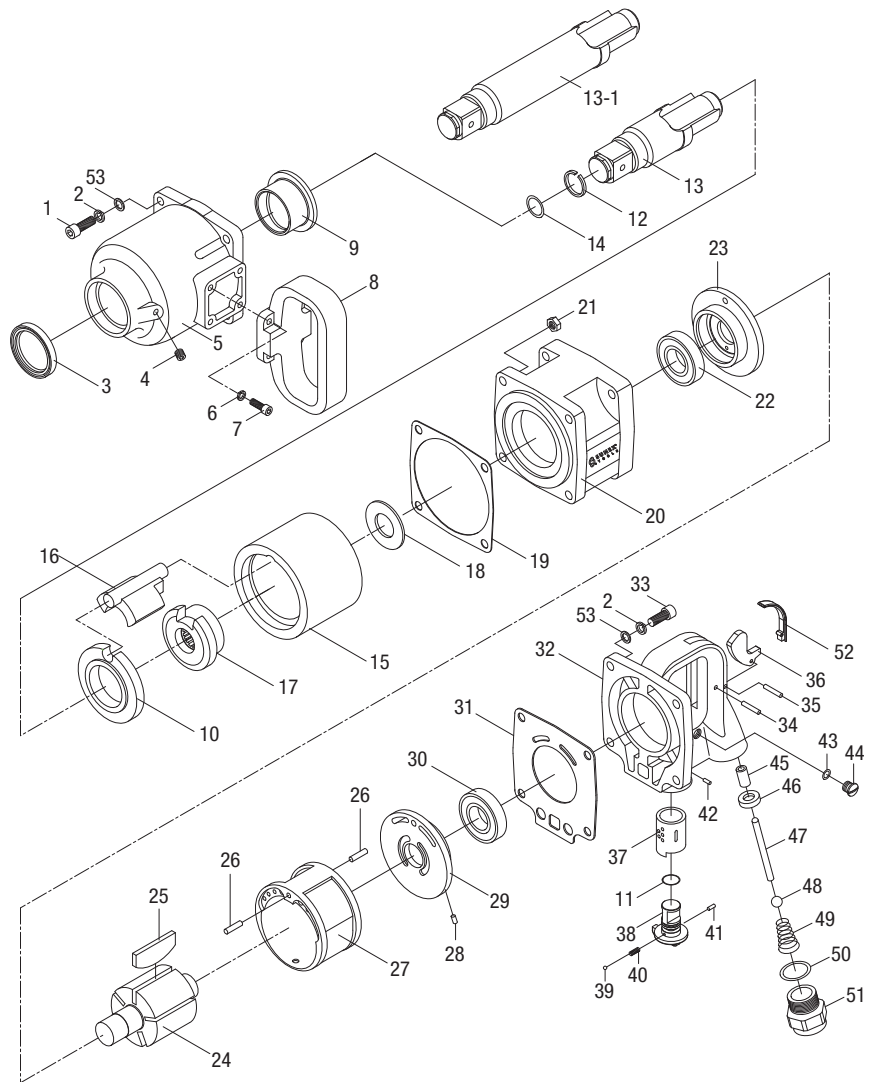
Use the simplest possible tool-to-socket hook up. Every connection absorbs energy and reduces power.

SX556-2

1" DRIVE IMPACT
WRENCH WITH 2"
EXTENDED ANVIL

SX556-6

1" DRIVE IMPACT
WRENCH WITH 6"
EXTENDED ANVIL



REF. NO.	PART NO.	DESCRIPTION	QTY.	REF. NO.	PART NO.	DESCRIPTION	QTY.
1	RS55601	Screw	4	28	RS55628	Spring-type Straight Pin	1
2	RS55602	Lock Washer	8	29	RS55629	Rear Plate	1
3		Oil Seal (Incl. w/ #5)	1	30	RS55630	Bearing	1
4	RS55604	Hex Socket Head Set Screw	1	31	RS55631	Rear Cylinder Gasket	1
5	RS55605	Front Casing Assy. (Incl. #3, 5, 9)	1	32	RS55632	Rear Casing Assy. (Incl. #32, 37, 45, 46)	1
6	RS55606	Lock Washer	4	33	RS55633	Hex Socket Cap Screw	4
7	RS55607	Hex Socket Cap Screw	4	34	RS55634	Spring-type Straight Pin (4 x 22)	1
8	RS55608	Side Handle	1	35	RS55635	Spring-type Straight Pin (4 x 24)	1
9		Anvil Bushing (Incl. w/ #5)	1	36	RS55636	Trigger	1
10	RS55610	Front Washer	1	37		Reverse Valve Bushing (Incl. w/ #32)	1
11	RS55611	O-Ring	1	38	RS55638	Reverse Valve Assembly (Incl. #38-41)	1
12	RS55612	Retainer Ring	1	39		Steel Ball (Incl. w/ #38)	1
13	RS113700	Extended 2" Anvil (Incl. #12-14)	1	40		Spring (Incl. w/ #38)	1
13-1	RS113713	Extended 6" Anvil (Incl. #12-14)	1	41		Spring-type Straight Pin (Incl. w/ #38)	1
14	RS55614	O-Ring	1	42	RS55642	Spring-type Straight Pin (4 x 28)	1
15	RS55615	Hammer Cage	1	43	RS55643	O-Ring	1
16	RS55616	Hammer	1	44	RS55644	Screw	1
17	RS55617	Hammer Cam	1	45		Throttle Valve Bushing (Incl. w/ #32)	1
18	RS55618	Spacer	1	46		Rubber Seal (Incl. w/ #32)	1
19	RS55619	Front Cylinder Gasket	1	47	RS55647	Throttle Valve Plunger	1
20	RS55620	Motor Housing Assy. (Incl. #20, 22, 23, 26, 27)	1	48	RS55648	Steel Ball	1
21	RS55621	All-Metal Locking Nut	4	49	RS55649	Spring	1
22		Bearing (Incl. w/ #20)	1	50	RS55650	O-Ring	1
23		Front Plate (Incl. w/ #20)	1	51	RS55651	Air Inlet Connector	1
24	RS55624	Rotor	1	52	RS55652	Rubber Shield	1
25	RS55625	Vane (pack of 5)	1	53	RS55653	Flat Washer	8
26		Spring-type Straight Pin (Incl. w/ #20)	2				
27		Cylinder (Incl. w/ #20)	1				

Also available:

RS556TK Tune-Up Kit (Incl. #3, 11, 12, 14, 19, 25 (5), 31, 43, 46, 50)