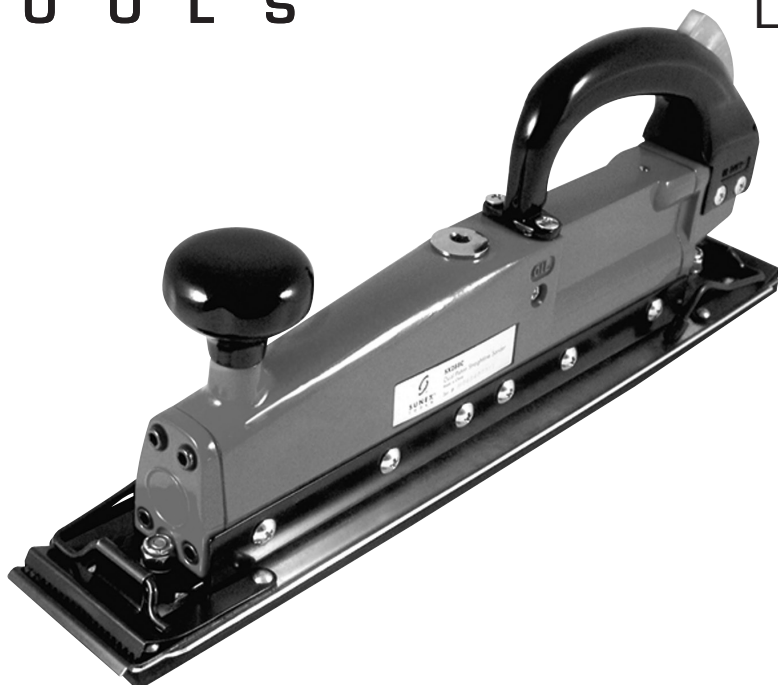




SX288C

DUAL PISTON STRAIGHT LINE SANDER



SX288C SPECIFICATIONS

Pad Size.....	16" x 2-1/2"
Stroke Length.....	1"
Stroke Per Min.....	2500
Avg. Air Cons.....	8 CFM
Rec. Air Pressure.....	90 psig
Sound Pressure Level.....	93 dBA
Height.....	6-3/16"
Length.....	16"
Shipping Wt.....	7 lbs.
Hose Diameter.....	3/8" I.D.

! WARNING



READ THIS MANUAL BEFORE OPERATING TOOL.



ALWAYS WEAR EYE PROTECTION AND BREATHING APPARATUS WHEN OPERATING OR PERFORMING MAINTENANCE ON THIS TOOL.



ALWAYS WEAR HEARING PROTECTION WHEN OPERATING THIS TOOL.



AVOID PROLONGED EXPOSURE TO VIBRATION

! WARNING

Some dust created by power sanding, sawing, grinding, drilling, and other construction activities contains chemicals known to cause cancer, birth defects or other reproductive harm. Some examples of these chemicals are:

- lead from lead-based paints,
- crystalline silica from bricks and cement and other masonry products, and
- arsenic and chromium from chemically-treated lumber.

Your risk from these exposures varies, depending on how often you do this type of work. To reduce your exposure to these chemicals: work in a well ventilated area, and work with approved safety equipment, such as those dust masks that are specially designed to filter out microscopic particles.



⚠ WARNING

To reduce the risk of injury, anyone using, repairing, maintaining, or changing accessories on this tool must read and understand these instructions before performing any of these tasks.

⚠ WARNING

FAILURE TO OBSERVE THESE WARNINGS COULD RESULT IN INJURY



THIS INSTRUCTION MANUAL CONTAINS IMPORTANT SAFETY INFORMATION.

READ THIS INSTRUCTION MANUAL CAREFULLY AND UNDERSTAND ALL INFORMATION BEFORE OPERATING THIS TOOL.

It is the responsibility of the owner to make sure all personnel read this manual prior to using the device. It is also the responsibility of the device owner to keep this manual intact and in a convenient location for all to see and read. If the manual or product labels are lost or not legible, contact Sunex Tools for replacements. If the operator is not fluent in English, the product and safety instructions shall be read and discussed with the operator in the operator's native language by the purchaser/owner or his designee, making sure that the operator comprehends its contents.

- Always operate, inspect and maintain this tool in accordance with American National Standards Institute Safety Code of Portable Air Tools (ANSI B186.1) and any other applicable safety codes and regulations.

- For safety, top performance and maximum durability of parts, operate this tool at 90 psig; 6.2 bar max air pressure with 3/8" diameter air supply hose.



- Always wear impact-resistant eye and face protection (users and bystanders) when operating or performing maintenance on this tool.



- Always wear hearing protection (users and bystanders) when using this tool. High sound levels can cause permanent hearing loss. Use hearing protection as recommended by your employer or OSHA regulation.



- Always wear dust mask or respirator (including bystanders).
- Keep the tool in efficient operating condition.



- Operators and maintenance personnel must be physically able to handle the bulk, weight and power of this tool.

- Keep tool out of reach of children.

- Start under work bench.

- Air powered tools can vibrate in use. Vibration, repetitive motions or uncomfortable positions over extended periods of time may be harmful to your hands and arms. Discontinue use of tool if discomfort, tingling feeling or pain occurs. Seek medical advice before resuming use.



- Air under pressure can cause severe injury. Never direct air at yourself or others. Always turn off the air supply, drain hose of air pressure and detach tool from air supply before installing, removing or adjusting any accessory on this tool, or before performing any maintenance on



this tool. Failure to do so could result in injury. Whip hoses can cause serious injury. Always check for damaged, frayed or loose hoses and fittings, and replace immediately. Do not use quick detach couplings at tool. See instructions for correct set-up.

- Slipping, tripping and/or falling while operating air tools can be a major cause of serious injury or death. Be aware of excess hose left on the walking or work surface.

- Keep body working stance balanced and firm. Do not overreach when operating the tool.

- Anticipate and be alert for sudden changes in motion during start up and operation of any power tool.



- Do not carry tool by the hose. Protect the hose from sharp objects and heat.



- Sanding pad may continue to reciprocate briefly after throttle is released. Avoid direct contact with sanding pad during and after use. Gloves will reduce the risk of cuts or burns.

- This tool is not insulated against electric shock.



- Keep away from reciprocating sanding pad. Do not wear jewelry or loose clothing. Secure long hair. Scalping can occur if hair is not kept away from tool and accessories. Choking can occur if neckwear is not kept away from tool and accessories.



- This tool must not be used in explosive atmospheres.

- Use accessories recommended by Sunex Tools.

- Do not force tool beyond its rated capacity.

- Do not remove any labels. Replace damaged labels.



- Use replacement parts and accessories recommended by Sunex Tools.

- Do not lubricate tools with flammable or volatile liquids such as kerosene, diesel or jet fuel.

- Do not use (or modify) the tool for any other purpose than that for which it was designed without consulting the manufacturer's authorized representative.

- This product may contain one or more chemicals known to the State of California to cause cancer and birth defects or other reproductive harm. *Wash hands thoroughly after handling.*

SAFETY INSTRUCTIONS - DO NOT DISCARD - GIVE TO USER

Air Supply Requirements

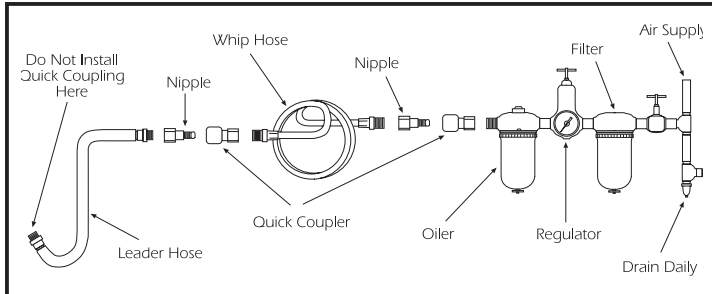
Tools operate on a wide range of air pressures. We recommend that air pressure measures 90 psig at the tool with the trigger fully depressed and no load applied to the tool. Low pressure (less than 90 psig/6.2 bar) reduces the speed and performance of all air tools. High pressure (over 115 psig/8.0 bar) exceeds the rated capacity of the tool, which will shorten tool life and may create a hazardous condition.

Always use clean, dry air. Dust, corrosive fumes, and/or water in the air line will cause damage to the tool. Drain water from air line and compressor prior to running tool. Clean the air inlet filter screen weekly. The air inlet used for connecting the air supply has standard 1/4" NPT American Thread. Line pressure should be increased to compensate for unusually long air hoses (over 25 feet). Minimum hose diameter should be 3/8" I.D. Fittings should have the same inside dimensions and should be tightly secured.

Ensure an accessible emergency shut off valve has been installed in the air supply line and make others aware of its location.

⚠ WARNING

Always turn off the air supply, drain hose of air pressure and detach tool from air supply before installing, removing or adjusting any part or accessory on this tool, or before performing any maintenance on this tool.



Lubrication

Lubricate the air motor daily with high quality air tool oil. If no air line oiler is used, run 1/2 oz. of oil through the tool. The oil can be squirted into the tool air inlet or into the hose at the nearest connection to the air supply, then run the tool. A rust inhibitive oil is acceptable for air tools.

WARNING: After an air tool has been lubricated, oil will discharge through the exhaust port during the first few seconds of operation. The exhaust port must be covered with a towel before applying air pressure to prevent serious injury.

Operation

The sander has a reciprocating pad and produces a smooth and professional finish to most surfaces. Suitable for removing paint and rust from metal surfaces, smoothing edges, shaping welded surfaces including fiberglass and wood surfaces for further finishing. After mounting sandpaper, start this sander under a bench in order to make sure sandpaper is firmly attached.

Abrasive paper can be held by 2 clamps or PSA paper. Do not use the tool for any other purpose than that for which it was designed. Do not modify the tool for any other purpose.

Speed can be varied by the trigger (19).

Always turn off the air supply, drain hose of air pressure and detach tool from air supply before installing, removing or adjusting any part or accessory on this tool, or before performing any maintenance on this tool. After mounting sandpaper, start this Sander under a bench in order to make sure sandpaper is firmly attached. Apply light pressure to the work area and allow the sandpaper to provide the desired finish.

Be careful when sanding around sharp edges to prevent cutting sandpaper and pad. Change sandpaper when worn or clogged. Use sandpaper specifically sized to the pad.

Periodically check air inlet screen and remove any contaminants.

⚠ WARNING



READ THIS MANUAL BEFORE OPERATING TOOL.



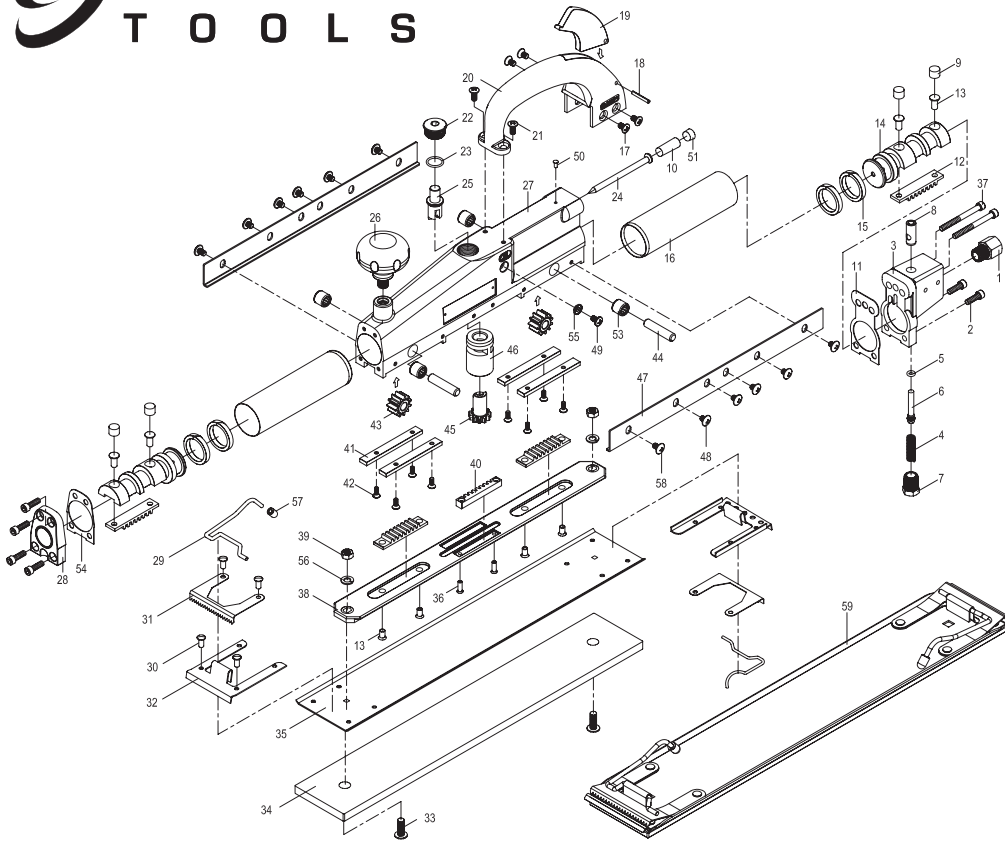
ALWAYS WEAR EYE PROTECTION AND BREATHING APPARATUS WHEN OPERATING OR PERFORMING MAINTENANCE ON THIS TOOL.



ALWAYS WEAR HEARING PROTECTION WHEN OPERATING THIS TOOL.



AVOID PROLONGED EXPOSURE TO VIBRATION



Ref. #	Item #	DESCRIPTION	QTY.	Ref. #	Item #	DESCRIPTION	QTY.
1	RS28601	Hose Adaptor	1	31	*	Compression Spacer	2
2	RS28602	Cap Screw	6	32	*	Fixed Plate	2
3	RS28603	Rear Cap	1	33	RS28633	Screw	2
4	RS28604	Valve Spring	1	34	*	Foam Pad	1
5	RS28605	O-Ring	1	35	*	Pad Plate	1
6	RS28606	Throttle Valve	1	36		Rivet (Included in #38)	2
7	RS28607	Valve Plug	1	37	RS28637	Cap Screw	2
8	RS28608	Valve Bushing	1	38	RS28638A	Carrier Assembly (Incl. #12, 13, 36, 40)	1
9	RS28609	Oil Cotton	4	39	RS28639	Locking Nut	2
10		Oil Cotton (Included in #27)	1	40		Slide Gear (Included in #38)	1
11	RS28611	Gasket	1	41	RS28641	Brass Plate	4
12		Flat Gear (Included in #14 & 38)	4	42	RS28642	Screw	8
13		Rivet (Included in #14 & 38)	8	43	RS28643	Gear	2
14	RS28614A	Piston Assembly (Incl. #12, 13)	2	44	RS28644	Gear Shaft	2
15	RS18615	Piston Ring	4	45	RS28645	Switch Gear	1
16		Cylinder (Included in #27)	2	46		Switch Sleeve (Included in #27)	1
17	RS28617	Screw	4	47	RS28647	Bolt Guide	2
18	RS28618	Spring Pin	1	48	RS28648	Screw	12
19	RS28619	Trigger	1	49	RS28649	Screw	1
20	RS28620	Handle	1	50		Rivet (Included in #27)	1
21	RS28621	Screw	2	51		Plug (Included in #27)	1
22	RS28622	Plug	1	53	RS28653	Needle Bearing	4
23	RS28623	O-Ring	1	54	RS28654	Front Gasket	1
24		Pin (Included in #27)	1	55	RS28655	Washer	1
25	RS28625	Switch	1	56	RS28656	Washer	2
26	RS28626	Palm Handle	1	57	*	Plastic Plug	2
27	RS28627	Housing (Incl. #10, 16, 24, 46, 50 & 51)	1	58	RS28658	Screw	2
28	RS28628C	Front Cover	1	59	RS28635A	Pad Assembly (incl. #29-35, 57)	1
29	*	Wire Clip	2	Not Shown	RSSX288CLK	Product Label Kit	1
30	*	Rivet	8				