



SUNEX[®]
T O O L S



!WARNING

Some dust created by power sanding, sawing, grinding, drilling, and other construction activities contains chemicals known to cause cancer, birth defects or other reproductive harm. Some examples of these chemicals are:

- lead from lead-based paints,
- crystalline silica from bricks and cement and other masonry products, and
- arsenic and chromium from chemically-treated lumber.

Your risk from these exposures varies, depending on how often you do this type of work. To reduce your exposure to these chemicals: work in a well ventilated area, and work with approved safety equipment, such as those dust masks that are specially designed to filter out microscopic particles.

!WARNING



ALWAYS READ INSTRUCTIONS BEFORE USING POWER TOOLS



ALWAYS WEAR SAFETY GOGGLES



WEAR HEARING PROTECTION



AVOID PROLONGED EXPOSURE TO VIBRATION

SPECIFICATIONS

Number of Needles	19	Air Inlet Thread	1/4" NPT
Needle Diameter.....	3mm	Rec. Hose ID.....	3/8"
Rec. Air Pressure.....	90 PSI	Sound Level.....	97dBA
Air Consumption.....	10 CFM	Overall Length	11"
Blows Per Minute	3,000 BPM	Weight.....	5.72 Lb.

SX246
PISTOL
GRIP
NEEDLE
SCALER

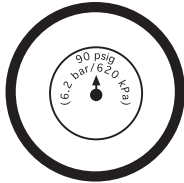
! WARNING

**FAILURE TO OBSERVE THESE WARNINGS
COULD RESULT IN INJURY.**



This Instruction Manual Contains Important Safety Information.

READ THIS INSTRUCTION MANUAL CAREFULLY AND UNDERSTAND ALL INFORMATION BEFORE OPERATING THIS TOOL.



- Always operate, inspect and maintain this tool in accordance with American National Standards Institute Safety Code of Portable Air Tools (ANSI B186.1) and any other applicable safety codes and regulations.



- For safety, top performance and maximum durability of parts, operate this tool at 90 psig/6.2 bar max air pressure with 3/8" diameter air supply hose.



- Always wear impact-resistant eye and face protection when operating or performing maintenance on this tool. Always wear hearing protection when using this tool.



- High sound levels can cause permanent hearing loss. Use hearing protection as recommended by your employer or OSHA regulation.



- Keep the tool in efficient operating condition.



- Operators and maintenance personnel must be physically able to handle the bulk, weight and power of this tool.

- Air under pressure can cause severe injury. Never direct air at yourself or others. Always turn off the air supply, drain hose of air pressure and detach tool from air supply before installing, removing or adjusting any accessory on this tool, or before performing any maintenance on this tool. Failure to do so could result in injury. Whip hoses can cause serious injury.

- Always check for damaged, frayed or loose hoses and fittings, and replace immediately. Do not use quick detach couplings at tool. See instructions for correct set-up.

- Air powered tools can vibrate in use. Vibration, repetitive motions or uncomfortable positions over extended periods of time may be harmful to your hands and arms. Discontinue use of tool if discomfort, tingling feeling or pain occurs. Seek medical advice before resuming use.



- Place the tool on the work before starting the tool. Do not point or indulge in any horseplay with this tool.

- Slipping, tripping and/or falling while operating air tools can be a major cause of serious injury or death. Be aware of excess hose left on the walking or work surface.



- Keep body working stance balanced and firm. Do not overreach when operating the tool.

- Anticipate and be alert for sudden changes in motion during start up and operation of any power tool.



- Do not carry tool by the hose. Protect the hose from sharp objects and heat.

- Tool shaft may continue to rotate briefly after throttle is released. Avoid direct contact with accessories during and after use. Gloves will reduce the risk of cuts or burns.

- Keep away from rotating end of tool. Do not wear jewelry or loose clothing.

- Secure long hair. Scalping can occur if hair is not kept away from tool and accessories. Choking can occur if neckwear is not kept away from tool and accessories.

- Do not lubricate tools with flammable or volatile liquids such as kerosene, diesel or jet fuel.

- Do not force tool beyond its rated capacity.

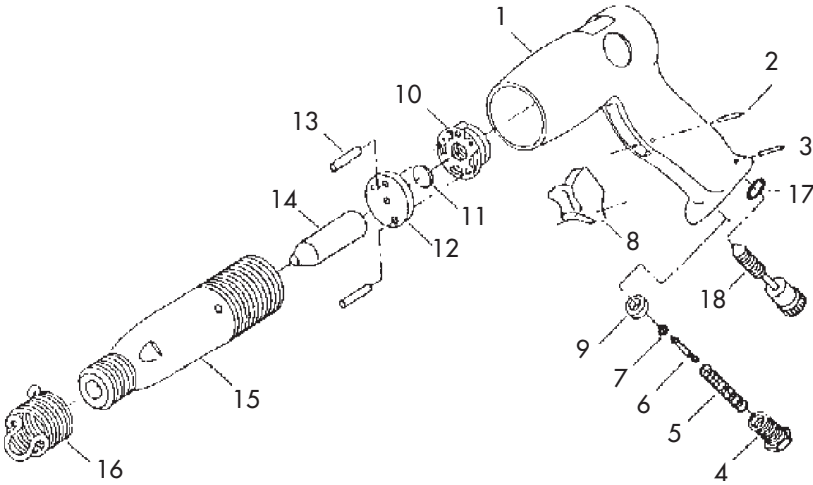
- Do not remove any labels. Replace any damaged labels.

- Use accessories recommended by Sunex Tools.

SX246

PISTOL GRIP NEEDLE SCALER

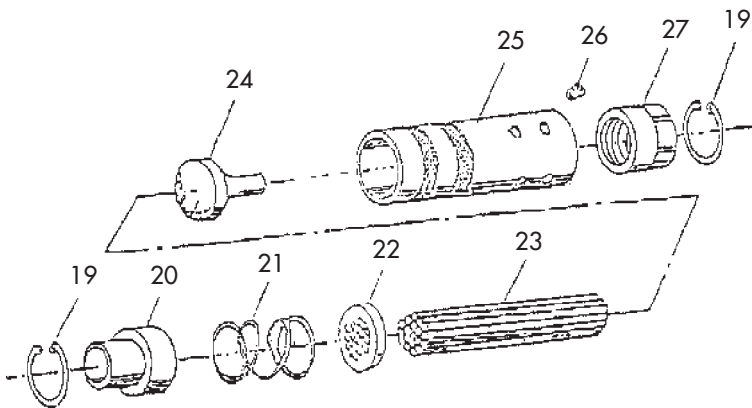
Air Hammer



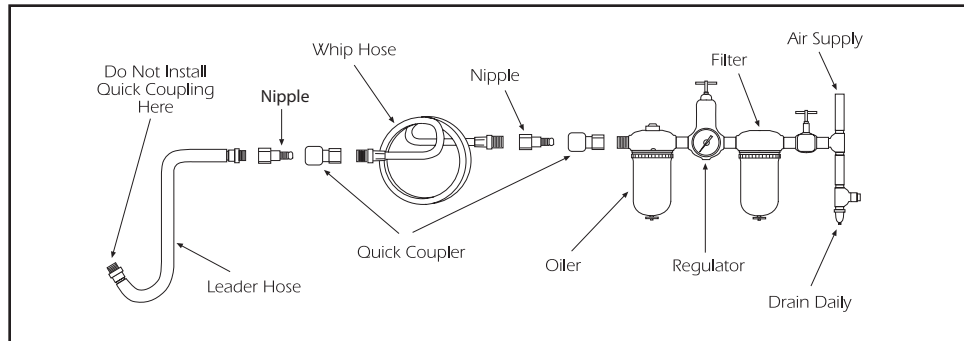
Ref. #	Item #	DESCRIPTION	QTY
1	RS24601	Handle	1
2	RS24602	Trigger Pin	1
3	RS24603	Regulator Pin	1
4	RS24604	Hose Adapter	1
5	RS24605	Throttle Spring	1
6	RS24606	Valve Stem	1
7	RS24607	O-Ring	1
8	RS24608	Aluminum Trigger	1
9	RS24609	Steel Ball Seat	1
10	RS24610	Upper Valve Case	1
11	RS24611	Valve Disc	1
12	RS24612	Lower Valve Case	1
13	RS24613	Valve Pin	2
14	RS24614	Piston	1
15	RS24615	Cylinder	1
16	*RS87301	Quick Change Retainer	1
17	RS24617	O-Ring	1
18	RS24618	Regulator	1

* RS87301 Not included with tool; available for purchase separately.

Needle Scaler Attachment



Ref. #	Item #	DESCRIPTION	QTY
19	RS24619	Snap Ring	2
20	RS24620	Plunger	1
21	RS24621	Spring	1
22	RS24622	Needle Holder	1
23	RS24623	Needle	19
24	RS24624	Anvil	1
25	RS24625	Housing	1
26	RS24626	Hex Screw	3
27	RS24627	Adapter	1



Air Supply...

Tools of this class operate on a wide range of air pressures. It is recommended that air pressure of these tools measures 90 PSI at the tool while running free. Higher pressure (over 90 psig; 6.2 bar) raises performance beyond the rated capacity of the tool which will shorten tool life because of faster wear and could cause injury.

Always use clean, dry air. Dust, corrosive fumes and/or water in the air line will cause damage to the tool. Drain the air tank daily. Clean the air inlet filter screen on at least a weekly schedule. The recommended hookup procedure can be viewed in figure 1.

The air inlet used for connecting air supply, has standard 1/4" NPT. Line pressure should be increased to compensate for unusually long air hoses (over 25 feet). Minimum hose diameter should be 3/8" I.D. and fittings should have the same inside dimensions and be tightly secured.

Lubrication...

Lubricate the cylinder daily with quality air tool oil. If no air line oiler is used, run a teaspoon of oil through the tool. The oil can be squirted into the tool air inlet or into the hose at the nearest connection to the air supply, then run the tool.

Operation...

Make sure needle housing is tightened securely on cylinder before operating tool.

To Change Needles:

Remove front retaining ring (#19) and slide plunger (#20), return spring (#21) and needle holder (#22) out from front of needle housing (#25).

Remove old needles from holder (#22) and insert new ones. The holes in the needle holder are countersunk; make sure needles drop inside holder so that top of each needle is flush with top of holder.

To regulate air, turn air regulator knob (#18) out (counterclockwise) for maximum air pressure and in (clockwise) for minimum air pressure.