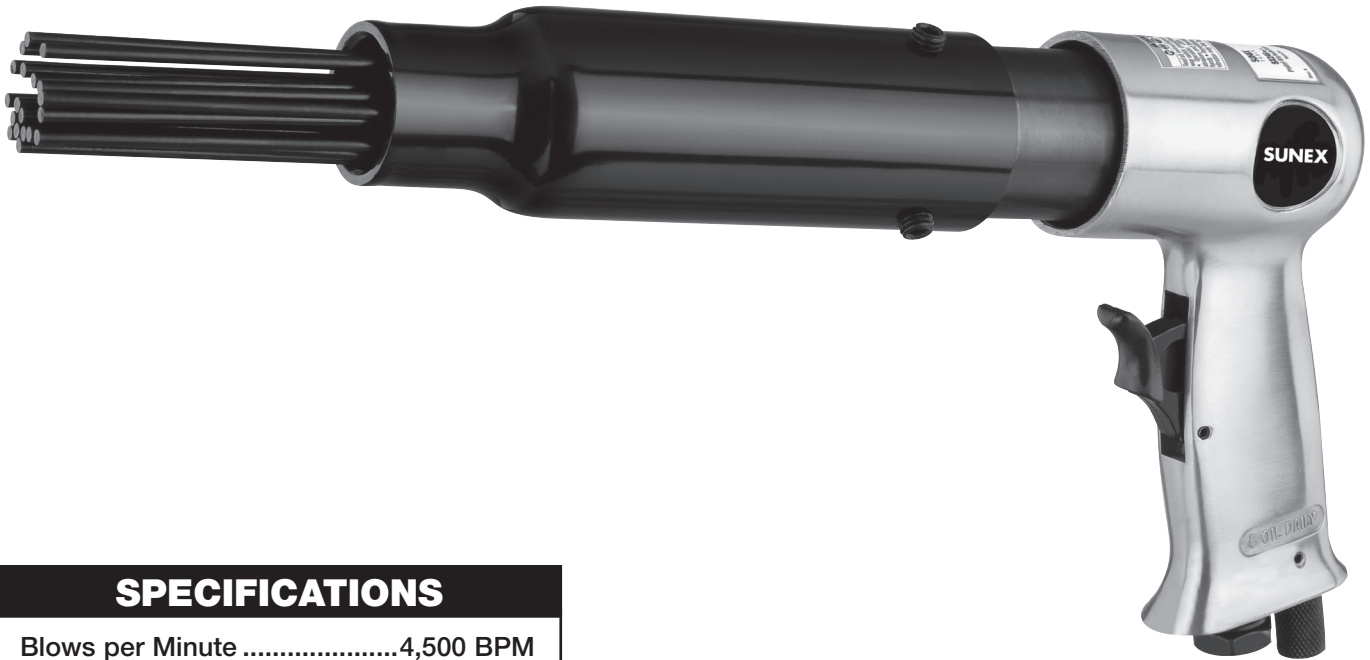


SUNEX[®]
T O O L S

SX246 Rev. A
PISTOL GRIP NEEDLE SCALER



SPECIFICATIONS

Blows per Minute	4,500 BPM
Number of Needles	19
Needle Diameter.....	3mm
Average Air Consumption.....	10 CFM
Air Inlet.....	1/4" NPT
Air Supply Hose Size.....	3/8" I.D.
Rec. Air Pressure.....	90 psig (6.2 bar)
Overall Length	12-7/8"
Weight.....	4.15 lb.
Sound Level.....	98 dBA

! WARNING

Some dust created by power sanding, sawing, grinding, drilling, and other construction activities contains chemicals known to cause cancer, birth defects or other reproductive harm. Some examples of these chemicals are:

- lead from lead-based paints,
- crystalline silica from bricks and cement and other masonry products, and
- arsenic and chromium from chemically-treated lumber.

Your risk from these exposures varies, depending on how often you do this type of work. To reduce your exposure to these chemicals: work in a well ventilated area, and work with approved safety equipment, such as those dust masks that are specially designed to filter out microscopic particles.

! WARNING



RATED RPM OF ACCESSORY USED MUST EXCEED THE MAXIMUM TOOL RPM SHOWN



READ THIS MANUAL BEFORE OPERATING TOOL



ALWAYS WEAR EYE PROTECTION (USERS AND BYSTANDERS) WHEN OPERATING OR PERFORMING MAINTENANCE ON THIS TOOL



ALWAYS WEAR HEARING PROTECTION WHEN OPERATING THIS TOOL



ALWAYS WEAR BREATHING APPARATUS WHEN OPERATING THIS TOOL



AVOID PROLONGED EXPOSURE TO VIBRATION

! WARNING

FAILURE TO OBSERVE THESE WARNINGS COULD RESULT IN INJURY

THIS INSTRUCTION MANUAL CONTAINS IMPORTANT SAFETY INFORMATION.

READ THIS INSTRUCTION MANUAL CAREFULLY AND UNDERSTAND ALL INFORMATION BEFORE OPERATING THIS TOOL.



• Read and understand all instructions. Failure to follow all instructions listed below, may result in electric shock, fire, explosion and/or serious personal injury. It is the responsibility of the owner to make sure all personnel read this manual prior to using the device. It is also the responsibility of the device owner to keep this manual intact and in a convenient location for all to see and read. If the manual or product labels are lost or not legible, contact Sunex Tools for replacements. If the operator is not fluent in English, the product and safety instructions shall be read and discussed with the operator in the operator's native language by the purchaser/owner or his designee, making sure that the operator comprehends its contents.

• Always operate, inspect and maintain this tool in accordance with American National Standards Institute Safety Code of Portable Air Tools (ANSI B186.1) and any other applicable safety codes and regulations.

• For safety, top performance and maximum durability of parts, operate this tool at 90 psig; 6.2 bar max air pressure with 3/8" diameter air supply hose.

• Always wear safety goggles and breathing apparatus (users and bystanders).

• High sound levels can cause permanent hearing loss. Always use hearing protection as recommended by your employer an OSHA regulations while using this tool (users and bystanders).

• Keep the tool in efficient operating condition.

• Operators and maintenance personnel must be physically able to handle the bulk, weight and power of this tool.

• Air under pressure can cause severe injury. Never direct air at yourself or others. Always turn off the air supply, drain hose of air pressure and detach tool from air supply before installing, removing or adjusting any accessory on this tool, or before performing any maintenance on this tool. Failure to do so could result in injury. Whip hoses can cause serious injury. Always check for damaged, frayed or loose hoses and fittings, and replace immediately. Do not use quick detach couplings at tool. See instructions for correct set-up.

• Keep tool out of reach of children.

• Air powered tools can vibrate in use. Vibration, repetitive motions or uncomfortable positions over extended periods of time may be harmful to your hands and arms. Discontinue use of tool if discomfort, tingling feeling or pain occurs. Seek medical advice before resuming use.

• Slipping, tripping and/or falling while operating air tools can be a major cause of serious injury or death. Be aware of excess hose left on the walking or work surface.

• Keep body working stance balanced and firm. Do not overreach when operating the tool.

• Do not point or indulge in any horseplay with this tool.



• Anticipate and be alert for sudden changes in motion during start up and operation of any power tool.

• Do not carry tool by the hose. Protect the hose from sharp objects and heat.

• Tool shaft may continue to reciprocate briefly after throttle is released. Avoid direct contact with accessories during and after use. Gloves will reduce the risk of cuts or burns.

• Keep away from reciprocating end of tool. Do not wear jewelry or loose clothing. Secure long hair. Scalping can occur if hair is not kept away from tool and accessories. Choking can occur if neckwear is not kept away from tool and accessories.

• Do not use (or modify) the tool for any other purpose than that for which it was designed without consulting the manufacturer's authorized representative.

• **Never use dull, chipped or damaged accessories.** Never cool a hot accessory in water as brittleness and early failure can result. Accessory breakage or tool damage may result from prying. Take smaller bites to avoid getting stuck.

• Never operate tool until inspected and confirmed needles are properly secured in the tool.

• Ensure the work piece is securely fixed.

• **RPM OF THE ACCESSORY MUST EXCEED TOOL RPM. Use accessories rated at 4,500 RPM or higher.**

• Use accessories recommended by Sunex Tools.

• Do not lubricate tools with flammable or volatile liquids such as kerosene, diesel or jet fuel.

• This tool is not insulated against electric shock.

• This tool must not be used in explosive atmospheres.

• Servicing and repairs should only be made by an authorized service center.

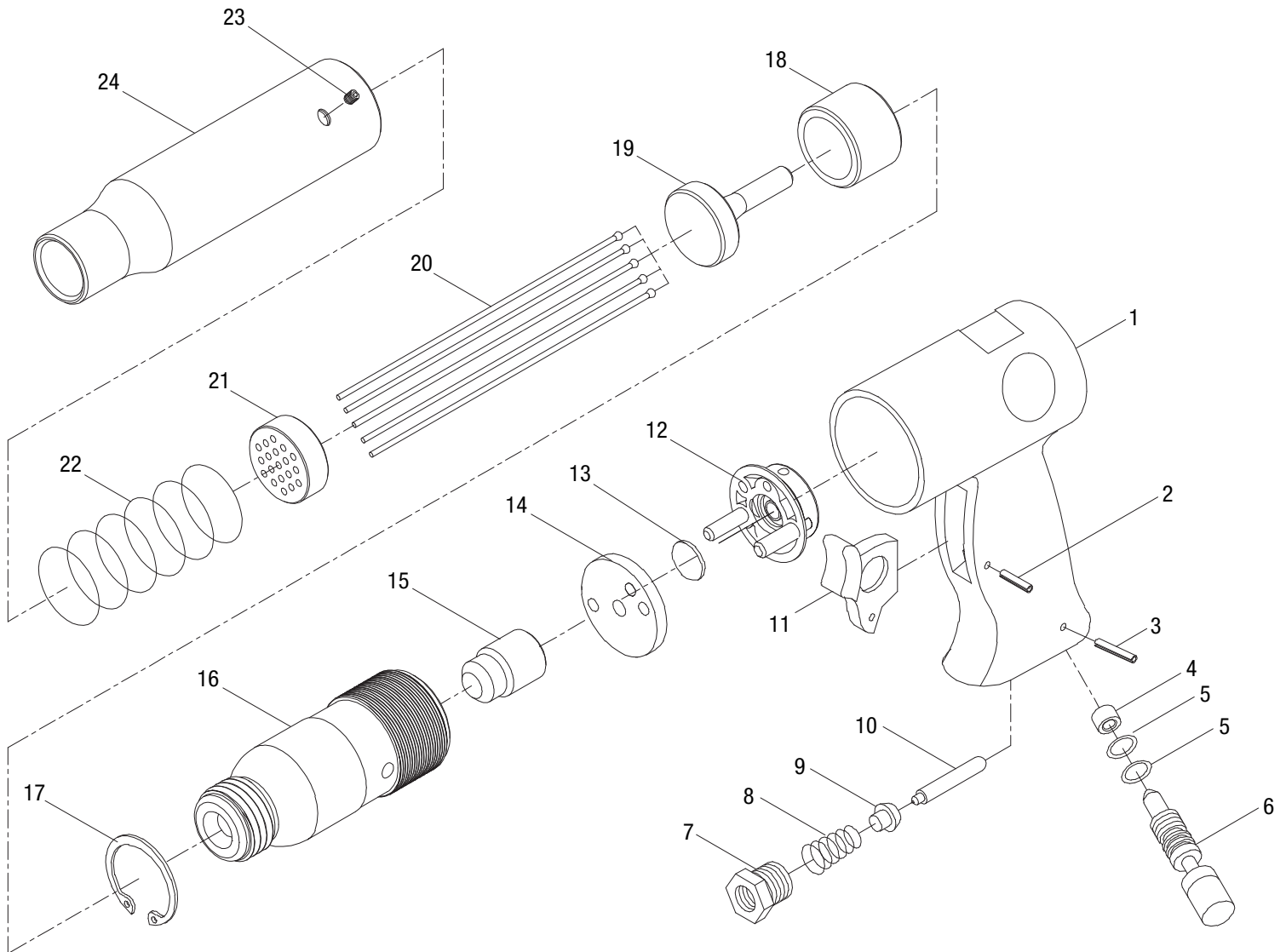
• Do not force tool beyond its rated capacity.

• Do not remove any labels. Replace damaged labels.

• Failure to heed these warnings may result in personal injury and/or property damage.

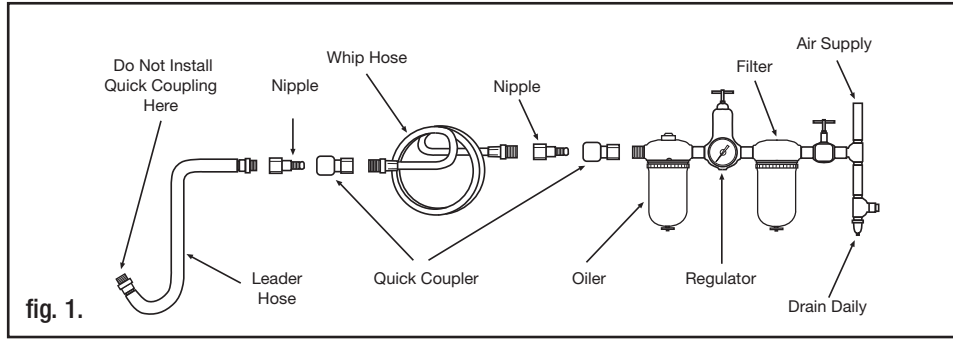
WARNING: This product can expose you to chemicals including nickel which is known to the State of California to cause cancer and birth defects or other reproductive harm.





REF. NO.	PART NO.	DESCRIPTION	QTY.
1	RS50301	Motor Housing	1
2	RS50302	Trigger Pin (3x18)	1
3	RS50303	Regulator Pin (3x20)	1
4	RS50304	Valve	1
5	RS50305	O-Ring	2
6	RS50306	Air Regulator	1
7	RS50307	Air Inlet	1
8	RS50308	Spring	1
9	RS50309	Seal Plug	1
10	RS50310	Valve Stem	1
11	RS50311	Trigger	1
12	RS50312	Rear End Plate	1
13	RS50313	Valve Plate	1

REF. NO.	PART NO.	DESCRIPTION	QTY.
14	RS50314	Front End Plate	1
15	RS50315	Piston	1
16	RS50316	Cylinder	1
17	RS50317	Snap Ring (40)	1
18	RS50318	Clamp Nut	1
19	RS50319	Hammer	1
20	RS50320	Needle	19
21	RS50321	Needle Supporter	1
22	RS50322	Spring	1
23	RS50323	Screw (M8x8)	3
24	RS50324	Sleeve	1
	RSSX246PL	Product Label Kit (not shown)	1



AIR SUPPLY

Tools operate on a wide range of air pressures. It is recommended that air pressure measures 90 psig at the tool with the trigger fully depressed and no load applied to the tool. Higher pressure (over 90 psig; 6.2 bar) raises performance beyond the rated capacity of the tool, which will shorten tool life and could cause injury.

Always use clean, dry air. Dust, corrosive fumes and/or water in the air line will cause damage to the tool. Drain the water from air lines and compressor prior to running tool. Clean the air inlet filter screen weekly. The recommended hookup procedure can be viewed in FIG. 1.

The air inlet used for connecting air supply has standard 1/4" NPT. Line pressure should be increased to compensate for unusually long air hoses (over 25 feet). Minimum hose diameter should be 3/8" I.D. and fittings should have the same inside dimensions and be tightly secured.

Ensure an accessible emergency shut off valve has been installed in the air supply line and make others aware of its location.

TROUBLESHOOTING

Other factors outside the tool may cause loss of power or erratic action. Reduced compressor output, excessive drain on the air line, moisture or restrictions in air pipes or the use of hose connections of improper size or poor conditions may reduce air supply. Grit or gum deposits in the tool may cut power and may be corrected by cleaning the air strainer and flushing out the tool with gum solvent oil or an equal mixture of SAE #10 and kerosene. If outside conditions are in order, disconnect tool from hose and take tool to your nearest authorized service center.

LUBRICATION AND MAINTENANCE

Lubricate the air motor daily with high quality air tool oil. If no air line oiler is used, run 1/2 oz. of oil through the tool. The oil can be squirted into the tool air inlet or into the hose at the nearest connection to the air supply, then run the tool. A rust inhibitive oil is acceptable for air tools.

WARNING: After an air tool has been lubricated, oil will discharge through the exhaust port during the first few seconds of operation. The exhaust port must be covered with a towel before applying air pressure to prevent serious injury.

OPERATION

Always turn off the air supply, drain hose of air pressure and detach tool from air supply before installing, removing or adjusting any part or accessory on this tool, or before performing any maintenance on this tool.

Needle Scalers are used for removal of rust, old paint, concrete and slag from new welds on many uneven metal surfaces. Needles adapt themselves to flat, curved and uneven surfaces. Excessive speed reduction indicates too much force being applied to the work surface. Apply moderate hand pressure to the tool and allow the tools accessories to do the work.

NOTE: During operation, safety goggles should always be worn to guard against flying debris (users and bystanders).