



## ! WARNING



**ALWAYS READ INSTRUCTIONS BEFORE  
USING POWER TOOLS**



**ALWAYS WEAR SAFETY GOGGLES**



**WEAR HEARING PROTECTION**



**AVOID PROLONGED EXPOSURE TO VIBRATION**

## SPECIFICATIONS

Collet Opening.....0.401" (10.19mm)  
Blows per Minute .....2,200 BPM  
Bore Diameter.....3/4" (19mm)  
Piston Stroke ..... 3-3/4" (95.25mm)  
Weight ..... 4.6 Lbs. (2.09 kg)  
Length .....8.88" (225.55mm)

Average Air  
Consumption ..... 4 CFM (91 l/min)  
Air Inlet.....1/4" NPT  
Minimum  
Hose Size.....3/8" I.D. (10mm)  
Sound Level.....110 dBA

**SX243**  
HEAVY  
DUTY LONG  
BARREL AIR  
HAMMER  
WITH QUICK  
CHANGE CHISEL  
RETAINER



## ⚠ WARNING

To reduce the risk of injury, anyone using, repairing, maintaining, or changing accessories on this tool must read and understand these instructions before performing any of these tasks.

- ⚠ Always inspect, operate, and maintain this tool in accordance with American National Standards Institute Safety Code of Portable Air Tools (ANSI B186.1) and any other applicable safety codes and regulations.
- ⚠ These tools are rated at 90 psi / 6.2 bar max air pressure for safety, top performance, and maximum durability of parts; do not exceed this pressure while the tool is running.
- ⚠ Always shut off air supply, drain hose of air pressure and disconnect tool from air supply when not in use, before changing accessories, or when making repairs.
- ⚠ Never direct air at yourself or anyone else.
- ⚠ Always wear impact-resistant eye and face protection when operating or performing maintenance on this tool.
- ⚠ High sound levels can cause permanent hearing loss. Always use hearing protection when using this tool as recommended by your employer or OSHA regulation.
- ⚠ Do not wear jewelry or loose fitting clothes.
- ⚠ Do not use quick disconnect couplings at tool. See operating instructions for proper set up.
- ⚠ Whipping hoses can cause serious injury. Always carefully check for damaged or loose hoses and fittings before operating this tool.
- ⚠ Never operate a tool unless the accessory is retained in the tool with a proper retainer that has been approved by Sunex Tools®.
- ⚠ To avoid injury, retainer parts must be replaced when they become worn, cracked, or distorted.
- ⚠ Avoid direct contact with accessories during and after use. Gloves should be worn to reduce the risk of cuts or burns.
- ⚠ Never run the tool off of the work. Accessory must be held firmly against work surface before tool is throttled.
- ⚠ Slipping, tripping, and/or falling while operating air tools can be a major cause of serious injury or death. Be aware of your surroundings and any excess hose left on the walking or working surface.
- ⚠ Pneumatic tools can cause vibration in use. Vibration, repetitive motions or uncomfortable positions over extended periods of time may be harmful to your hands and arms. Discontinue use of tool if discomfort, tingling feeling or pain occurs. Consult a physician before resuming use if any of these symptoms occur.
- ⚠ Do not stretch or overreach while using this tool.
- ⚠ If tool appears to malfunction, remove from service immediately and arrange for repair.
- ⚠ Never use tool if there is any chance of coming into contact with line electricity.
- ⚠ Use only Sunex certified spare parts for any repair made to tool. Repairs should only be performed by properly trained persons.
- ⚠ Do not lock, tape or wire the tool valve in the "on/off" position.
- ⚠ Do not allow the exhaust air to come in contact with hot surfaces or flames.
- ⚠ Avoid inhaling dust or handling debris from the work process, which can be harmful to your health. Use dust extraction and wear respiratory protective equipment when working with materials which produce airborne particles.
- ⚠ Some dust created by power sanding, sawing, grinding, drilling and other construction activities contains chemicals known to the State of California to cause cancer and birth defects or other reproductive harm. Some examples of these chemicals are:
  - Lead from lead based paints
  - Crystalline silica bricks and cement and other masonry products
  - Arsenic and chromium from chemically-treated lumberYour risk from these exposures varies, depending on how often you do this type of work. To reduce your exposure to these chemicals: work in a well ventilated area, and work with approved safety equipment, such as those dust masks that are specially designed to filter out microscopic particles.

### Additional Safety Warnings

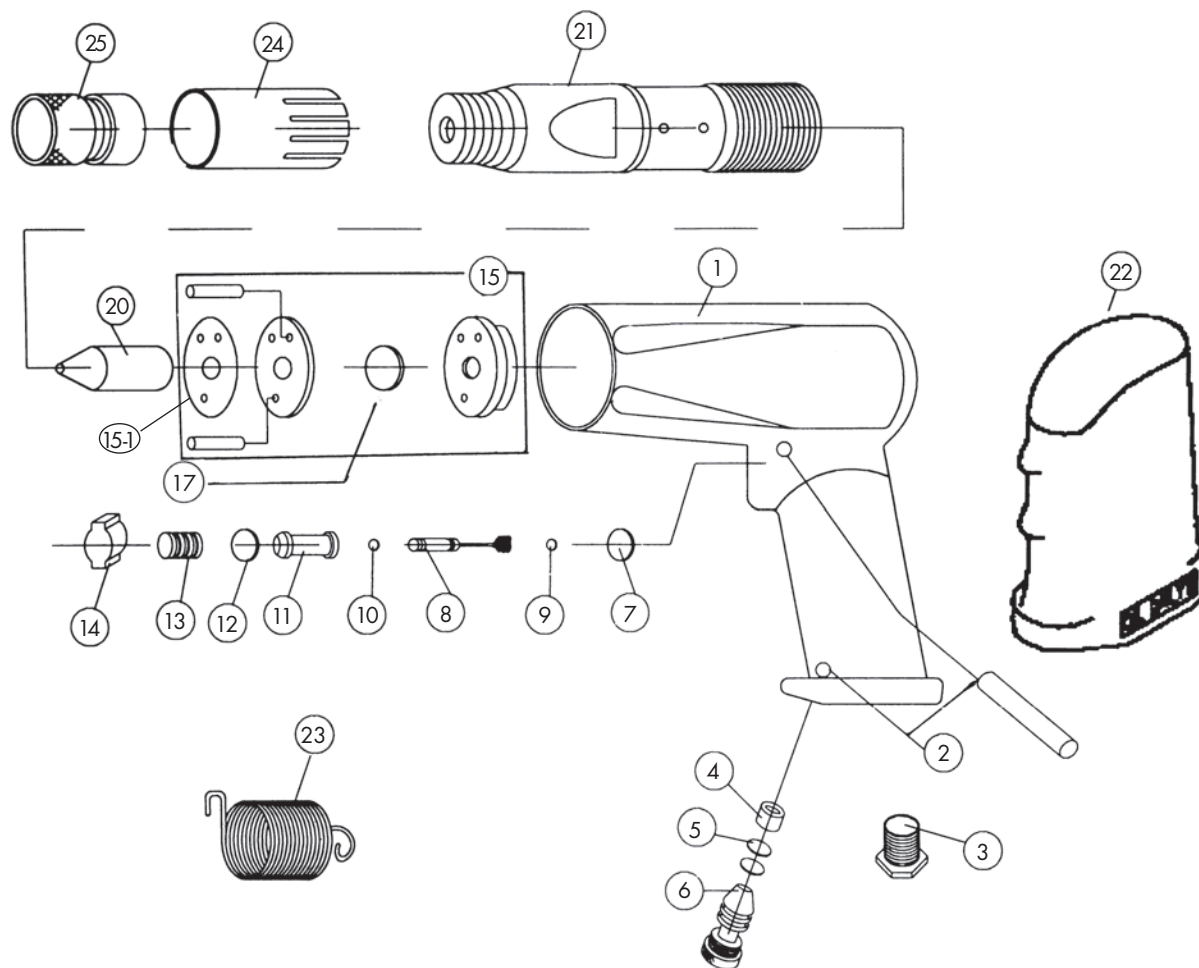
- ⚠ Do not modify this tool or its accessories.
- ⚠ This tool is not recommended for use in explosive atmospheres or underwater use.
- ⚠ Operators and maintenance personnel must be physically able to handle the bulk, weight, and power of this tool.
- ⚠ This tool is for professional use only.

**SAFETY INSTRUCTIONS - DO NOT DISCARD - GIVE TO USER**

# SX243

## HEAVY DUTY LONG BARREL AIR HAMMER

WITH QUICK CHANGE CHISEL RETAINER



REF. NO.	PART NO.	DESCRIPTION	QTY.
1	RS243001	Housing (incl. #2-14, 22)	1
2	RS848002	Roll Pin (3 x 18mm)	2
3	RS848003	Inlet Bushing	1
4	RS848004	Cap	1
5	RS848005	O-Ring (4.9 x 2.2mm)	2
6	RS848006	Regulator	1
7	RS848007	O-Ring (11 x 2.4mm)	1
8	RS848008V	Valve Stem	1
9	RS848009	O-Ring (3.8 x 1.9mm)	1
10	RS848010	O-Ring (3.5 x 1.5mm)	1
11	RS848011	Valve Bushing	1
12	RS848012	O-Ring (12 x 2mm)	1

REF. NO.	PART NO.	DESCRIPTION	QTY.
13	RS848013	Spring	1
14	RS848014	Trigger Button	1
15-1	RS848015S-1	Metal Disk Plate	1
15	RS171815	Valve Block Assembly	1
17	RS171816	Valve Disk	1
20	RS848019	Piston	1
21	RS848320	Cylinder	1
22	RS248022B	Comfort Grip	1
23	RS87301	Retainer Spring (optional)	1
24	RS848023	Exhaust Deflector	1
25	RS248025	Quick Change Chuck	1

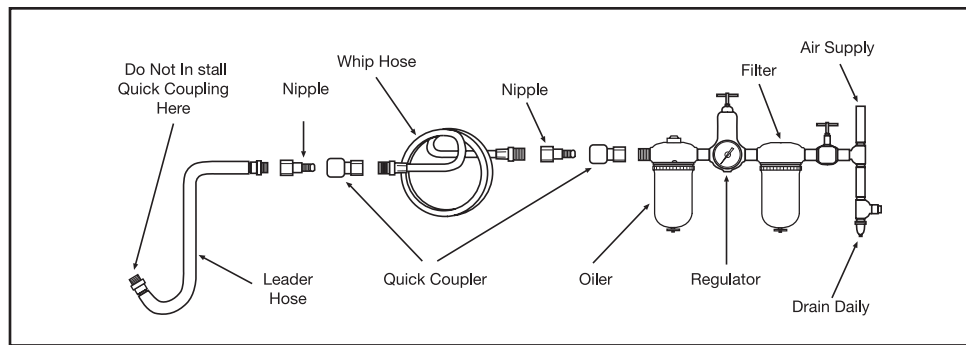


FIGURE 1

## Air Supply...

Tools of this class operate on a wide range of air pressures. It is recommended that air pressure of these tools measures 90 PSI at the tool while running free. Higher pressure (over 90 psig; 6.2 bar) will shorten the tool life and can cause accessory failure due to over speed.

Always use clean, dry air. Dust, corrosive fumes and/or water in the air line will cause damage to the tool. Drain the air tank daily. Clean the air inlet filter screen on at least a weekly schedule. The recommended hookup procedure can be viewed in figure 1.

## Lubrication...

Lubricate the tool each day after use with quality SAE #10 air motor oil. Add the oil to the air inlet or into the hose at the nearest connection to the air supply then run the tool until all excess oil is expelled from the exhaust. Total oil quantity needed for this procedure is approximately 1 ounce.

## Troubleshooting...

Other factors outside the tool may cause loss of power or erratic action. Reduced compressor output, excessive drain on the air line, moisture or restrictions in air pipes or the use of hose connections of improper size or poor conditions may reduce air supply. Grit or gum

deposits in the tool may cut power and may be corrected by cleaning the air strainer and flushing out the tool with gum solvent oil or an equal mixture of SAE #10 and kerosene. If outside conditions are in order, disconnect tool from hose and take tool to your nearest authorized service center.

## Operation...

Always place a chisel in the hammer and hold the tool down to the work before operating. Damage to the tool or the retainer may result if this precaution is not followed.

The chisel retainers are not designed for complete safety against accidental release of cutters or hammers. To avoid injury, the throttle (trigger) must never be depressed unless the chisel is held firmly against the work place. When tool is not in actual use, the chisel must be removed. During operation, safety goggles should ALWAYS be used to guard against flying rust and chips. When using tool, regulate the speed so that the chisel is not being driven out of the cylinder. If piston is allowed to strike the cylinder wall, internal damage will result.