



! WARNING

Some dust created by power sanding, sawing, grinding, drilling, and other construction activities contains chemicals known to cause cancer, birth defects or other reproductive harm. Some examples of these chemicals are:

- lead from lead-based paints,
- crystalline silica from bricks and cement and other masonry products, and
- arsenic and chromium from chemically-treated lumber.

Your risk from these exposures varies, depending on how often you do this type of work. To reduce your exposure to these chemicals: work in a well ventilated area, and work with approved safety equipment, such as those dust masks that are specially designed to filter out microscopic particles.

! WARNING

- MAX AIR PRESSURE:
90 PSIG, 6.2 BAR



ALWAYS READ INSTRUCTIONS BEFORE USING POWER TOOLS



ALWAYS WEAR SAFETY GOGGLES



WEAR HEARING PROTECTION



AVOID PROLONGED EXPOSURE TO VIBRATION

SPECIFICATIONS

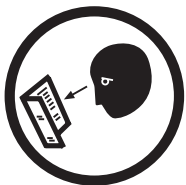
Air Inlet.....1/4" NPT	Vacuum Level 7.5mmHg
Min. Hose Size.....5/16" I.D.	Sound Level.....92 dBA
Rec. Air Pressure90 PSIG	Length.....5.7"
Avg. Air Consumption.....3.36 CFM	Shipping Weight..... 1.47 lbs.

SX1000

DUAL FUNCTION AIR VACUUM

!WARNING

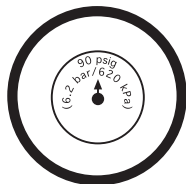
FAILURE TO OBSERVE THESE WARNINGS COULD RESULT IN INJURY



This Instruction Manual Contains Important Safety Information.

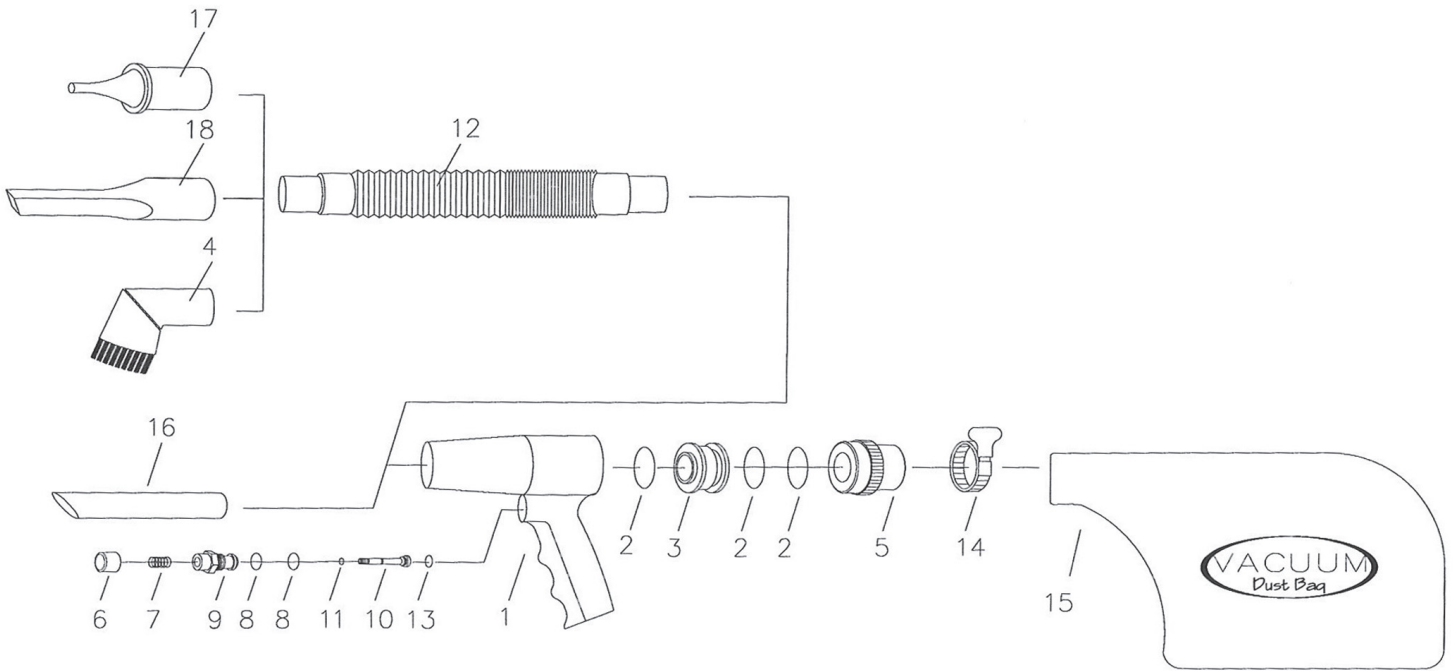
READ THIS INSTRUCTION MANUAL CAREFULLY AND UNDERSTAND ALL INFORMATION BEFORE OPERATING THIS TOOL.

- Always operate, inspect and maintain this tool in accordance with American National Standards Institute Safety Code of Portable Air Tools (ANSI B186.1) and any other applicable safety codes and regulations.
- For safety, top performance and maximum durability of parts, operate this tool at 90 psig; 6.2 bar max air pressure with 5/16" diameter air supply hose.
- Always wear impact-resistant eye and face protection when operating or performing maintenance on this tool.
- Always wear hearing protection when using this tool. High sound levels can cause permanent hearing loss. Use hearing protection as recommended by your employer or OSHA regulation.
- Keep the tool in efficient operating condition.
- Operators and maintenance personnel must be physically able to handle the bulk, weight and power of this tool.
- Compressed air can cause severe injury. Never direct air at yourself or others. Always turn off the air supply, drain hose of air pressure and detach tool from air supply before installing, removing or adjusting any accessory on this tool, or before performing any maintenance on this tool. Failure to do so could result in injury. Whip hoses can cause serious injury. Always check for damaged, frayed or loose hoses and fittings, and replace immediately. Do not use quick detach couplings at tool. See instructions for correct set-up.
- Air powered tools can vibrate during use. Vibration, repetitive motions or uncomfortable positions over extended periods of time may be harmful to your hands and arms. Discontinue use of tool if discomfort, tingling feeling or pain occurs. Seek medical advice before resuming use.

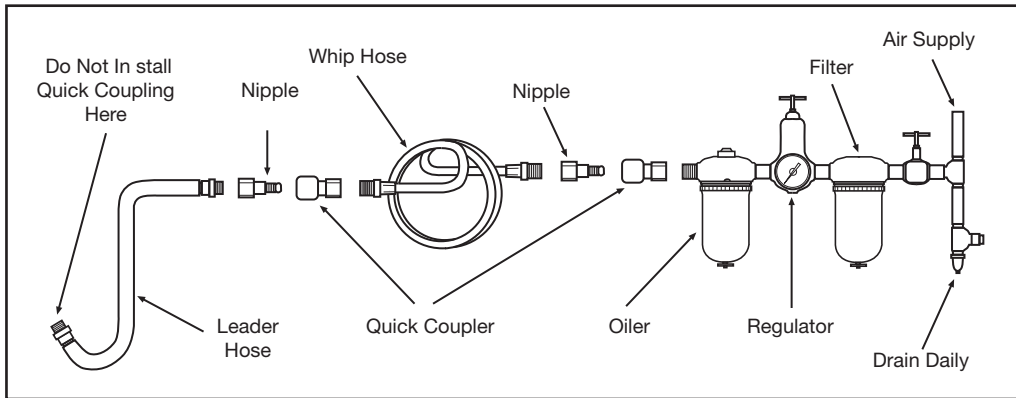


- Place the tool on the work before starting the tool. Do not point or indulge in any horseplay with this tool.
- Slipping, tripping and/or falling while operating air tools can be a major cause of serious injury or death. Be aware of excess hose left on the walking or work surface.
- Keep body working stance balanced and firm. Do not overreach when operating the tool.
- Anticipate and be alert for sudden changes in motion during start up and operation of any power tool.
- Do not carry tool by the hose. Protect the hose from sharp objects and heat.
- Tool shaft may continue to rotate briefly after throttle is released. Avoid direct contact with accessories during and after use. Gloves will reduce the risk of cuts or burns.
- Keep away from rotating end of tool. Do not wear jewelry or loose clothing. Secure long hair. Scalping can occur if hair is not kept away from tool and accessories. Choking can occur if neckwear is not kept away from tool and accessories.
- Do not use near flammable materials, such as gas tanks.
- Do not vacuum any liquids.
- Take care that the exhaust air does not point towards any other person or material or substance that could be contaminated by oil droplets. When first lubricating a tool or if the tool exhaust has a high oil content do not allow the exhaust air to come near very hot surfaces or flames.
- This tool is not suitable for underwater use or use in explosive environments.
- Do not lubricate tools with flammable or volatile liquids such as kerosene, diesel or jet fuel.
- Do not force tool beyond its rated capacity.
- Do not remove any labels. Replace damaged labels.
- Use accessories recommended by Sunex Tools®.

SX1000: DUAL FUNCTION AIR VACUUM



REF. NO.	PART NO.	DESCRIPTION	QTY.	REF. NO.	PART NO.	DESCRIPTION	QTY.
1	RSVG01	Housing	1	10	RSVG10	Valve Stem	1
2	RSVG02	O-Ring (Pack of 3)	1	11	RSVG11	O-Ring	1
3	RSVG03	Valve	1	12	RSVG12	Flexible Hose	1
4	RSVG04	Brush	1	13	RSVG13	O-Ring	1
5	RSVG05	End Cap	1	14	RSVG14	Clamping Ring	1
6	RSVG06	Bottom	1	15	RSVG15	Dust Bag	1
7	RSVG07	Spring	1	16	RSVG16	Extension Tube	1
8	RSVG08	O-Ring (Pack of 2)	1	17	RSVG17	Small Diameter Vacuum Tube	1
9	RSVG09	Valve Seat	1	18	RSVG18	Flat Tube	1



Air Supply...

Tools of this class operate on a wide range of air pressures. It is recommended that air pressure of these tools measures 90 PSI at the tool while running free. Higher pressure (over 90 psig; 6.2 bar) raises performance beyond the rated capacity of the tool; which will shorten tool life because of faster wear and could cause injury.

Always use clean, dry air. Dust, corrosive fumes and/or water in the air line will cause damage to the tool. Drain the air tank daily. Clean the air inlet filter screen on a weekly schedule. The recommended connection procedure can be viewed in the above figure.

The air inlet used for connecting air supply, has standard 1/4" NPT. Line pressure should be increased to compensate for unusually long air hoses (over 25 feet). Minimum hose diameter should be 5/16" I.D. and fittings should have the same inside dimensions and be tightly secured.

Operation...

To operate as a blow gun, remove end cap (#5), remove and reverse the position of the valve (#3). Always ensure that the o-rings (#2) are replaced properly.

Factors outside the tool may cause loss of power or erratic action. Reduced compressor output, excessive drain on the air line, moisture or restrictions in air pipes or the use of hose connections of improper size or poor condition may reduce air supply. Grit or gum deposits in the tool may cut power and may be corrected by cleaning the air strainer and flushing out the tool with gum solvent oil or an equal mixture of SAE #10 oil and kerosene. If outside conditions are in order and the tool continues erratic action or low power, disconnect tool from hose and take tool to your nearest authorized service center.