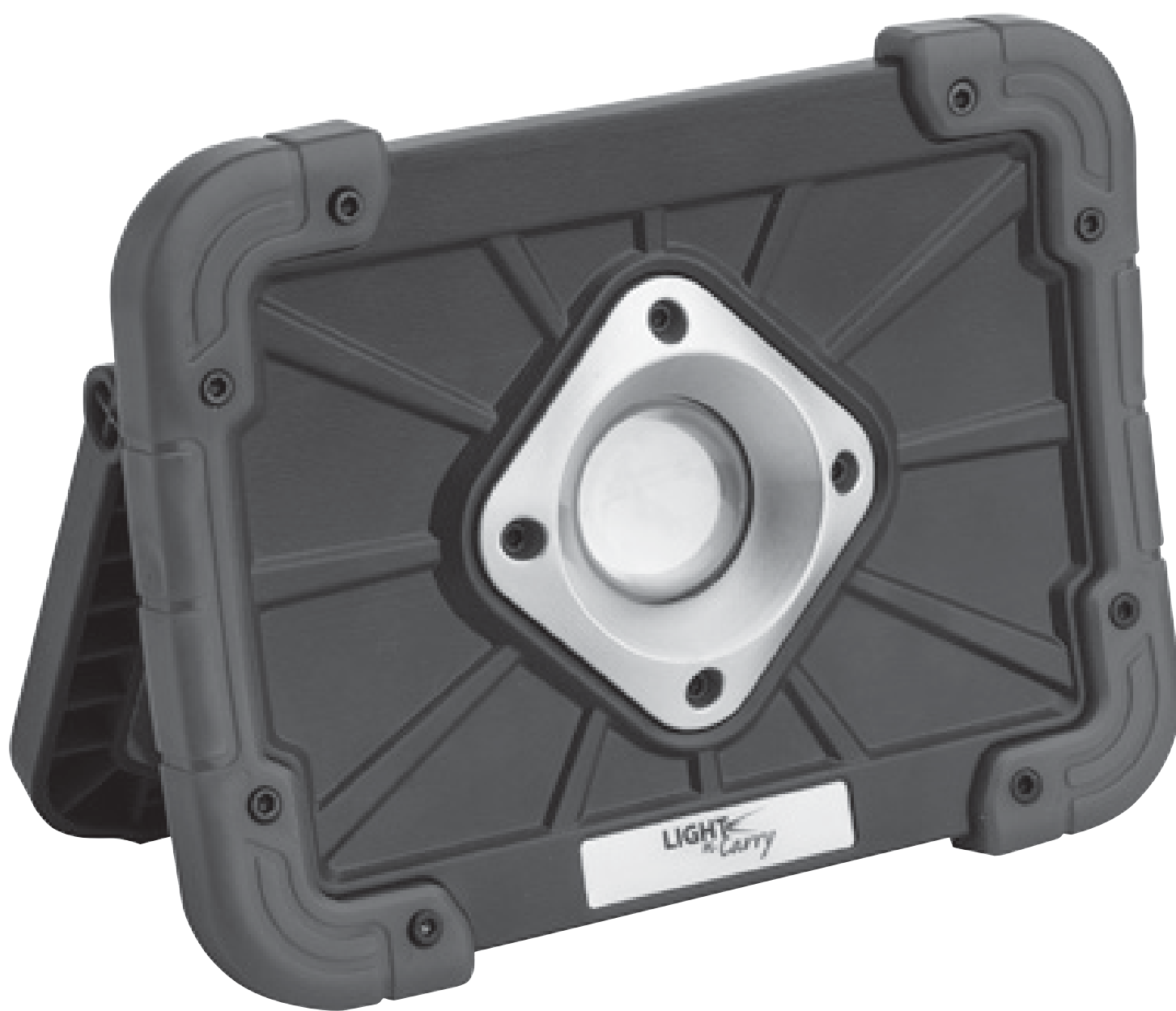


LIGHT n Carry®

COB LED Rechargeable Flood Light
Operator's Manual

Model Nos. LNC2251 and LNC2551



⚠ WARNING	
	Failure to follow instructions may cause damage or explosion, always shield eyes. Read entire instruction manual before use.

⚠ WARNING: This product can expose you to chemicals, including Vinyl-Chloride, Styrene and Acrylonitrile, which are known to the State of California to cause cancer.




PLEASE SAVE THIS OWNERS MANUAL AND READ BEFORE EACH USE.

This manual will explain how to use the flood light safely and effectively. Please read and follow these instructions and precautions carefully.

This unit has a sealed lithium battery that should be kept at full charge. Recharge when first received, immediately after each use, and every three months if not used. Failure to perform maintenance charges may cause the battery life to be reduced greatly.

A/F/S (Flood) Lighting Solutions

Whether on a building site, in an industrial environment or in an automotive garage, Light-N-Carry A/F/S lighting solutions provide bright illumination, long run times and easy recharging. Portable, powerful, versatile – you can count on Light-N-Carry.

⚠ WARNING	
	Read these instructions completely before using the Light-N-Carry and save them for future reference.
	Fire Risk – do not disassemble, crush, puncture or ignite internal battery.
	Do not use any other charger except the one provided to charge the flood light. Use of a charger not supplied by the manufacturer may result in a risk of fire, injury to persons and/or damage to property.

IMPORTANT SAFETY INSTRUCTIONS

SAVE THESE INSTRUCTIONS – This manual contains important safety and operating instructions for Model Nos. LNC2251 and LNC2551. Read, understand and follow all instructions, cautions and warnings listed in this manual. Failure to follow all instructions could result in personal injury, injury to others and property damage.

IMPORTANT! – Charge flood light immediately after purchase, after each use, and at least every 3 months when not in use.

DO NOT turn on the flood light while it is being charged.

DO NOT handle or move the flood light while it is being charged.

DO NOT look directly into the light or shine the light directly into the eyes of any person or animal.

DO NOT allow children to use the flood light.

DO NOT operate the flood light if it has received a sharp blow, been dropped, or otherwise damaged in any way; take it to a qualified service person.

DO NOT allow the unit's battery to stay in a discharged state for long periods of time. This has a detrimental effect on battery life.

AC CHARGER FOR INDOOR USE ONLY. DO NOT expose the charger to water or use in damp conditions.

WARNING: When the battery is removed from the light, care should be taken to prevent battery contacts (on the rear of battery) from interacting with any conductive surfaces. Also, the removed battery should not be exposed to water, other fluids or shop chemicals.

WARNING: DO NOT charge battery if its temperature is below 32°F (0°C). If the battery was in below freezing temperatures, bring it indoors and allow to warm up prior to charging.

DO NOT use the flood light with a charger which has a damaged cord or plug. Replace the cord or plug immediately.

To reduce the risk of damage to the charger plug, pull by the plug, rather than the cord, when disconnecting the charger.

DO NOT use the provided charger to charge or power any other electrical item.

PERSONAL SAFETY PRECAUTIONS

WARNING: To reduce risk of fire or burns, do not disassemble, crush or puncture internal battery, short external contacts, or dispose of in fire or water.

WARNING: Avoid direct exposure of LED light to eyes. Do not shine into the eyes of people or animals. Keep away from children.

DO NOT disassemble the flood light; take it to a qualified service person when service or repair is required. Incorrect reassembly may result in a risk of fire.

DO NOT operate in, charge in or expose to temperatures above 140°F (60°C).

Recycle or dispose of the used battery as required by local regulations.

FEATURES

- ON/OFF Power Button
- COB LED Flood Light with 3 Settings (low, medium, high)
- USB Power Outlet (5V, 1.1A)
- State of Charge / Charging Status LED Indicator
- Dual Magnets on Unit Handle
- AC wall Charger
- Removeable Battery - 2 Included

CHARGING

WARNING: When the battery is removed from the light, care should be taken to prevent battery contacts (on the rear of battery) from interacting with any conductive surfaces. Also, the removed battery should not be exposed to water, other fluids or shop chemicals

NOTE: CHARGE THE FLOOD LIGHT IMMEDIATELY AFTER PURCHASE, AFTER EACH USE, AND AT LEAST EVERY 3 MONTHS WHEN NOT IN USE. Failure to do this will reduce the battery's useful life.

Connect the pin jack end of the charging cord to the pin jack port on the flood light and plug the AC charger into a functioning AC outlet.

The green state of charge / charging status LEDs will blink in succession to indicate charging progress. To reach full charge, continue charging until all four LEDs are lit solid.

Charging will take approximately 4 hours, depending on the unit's state of charge at the start of the cycle.

The charging process is fully automatic and the battery can remain connected to the charger indefinitely without adverse consequences.

OPERATING INSTRUCTIONS

NOTE: Do not turn on the flood light while it is being charged.

Direct the lens away from your eyes before turning on the flood light.

Press the POWER button to achieve the operational mode desired:

- Press POWER to turn on unit and activate USB power supply
- Press POWER for flood light low brightness mode.
- Press POWER a second time for flood light medium brightness mode.
- Press POWER a third time for flood light high brightness mode.
- Press POWER a fourth time to turn the unit OFF.

The unit can be powered OFF from any operational mode by pressing and holding the POWER button for 3 seconds.

The unit incorporates a rotating arm with integrated magnets in its base for ideal positioning, allowing it to be attached to any ferrous metal surface.

Recharge the flood light after use and every 3 months when not in use.

MAINTENANCE INSTRUCTIONS

After use and before performing maintenance, disconnect the flood light from the charger.

Use a dry cloth to wipe any dirt or oil from the charger, cord and light.

Any servicing should be performed by qualified service personnel.

STORAGE INSTRUCTIONS

Store inside in a cool, dry place.

Take care to avoid/prevent damage to the charger, cord and unit. Failure to do so could result in personal injury or property damage.

Charge the flood light's internal battery immediately after purchase, after use and every 3 months when not in use.

All batteries are affected by temperature. The ideal storage temperature is 70°F. The internal battery will gradually self-discharge (lose power) over time, especially in warm environments. Leaving the battery in a discharged state may result in shorter than expected battery life.

REPLACEMENT PARTS

Charger replacement kit (includes wall charger and pin jack cable)
– Model No. LNC236

Replacement battery kit – Model No. LNC233