



PRO POWER TIRE INFLATOR

HEAVY-DUTY: 4x4 • SUV • TRUCK



! **ATTENTION! READ ALL INSTRUCTIONS CAREFULLY**
FAILURE TO FOLLOW WARNING INSTRUCTIONS CAN RESULT IN FIRE,
PERSONAL INJURY OR PROPERTY DAMAGE.

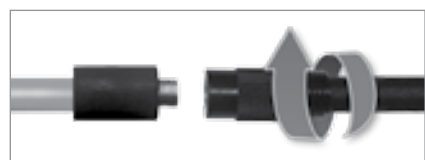
PART# 40031



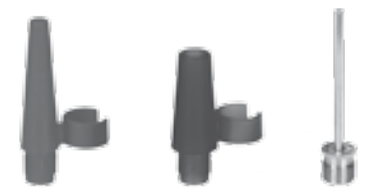
TECH SPECS

IDEAL USES	Tires
TIRE INFLATION TIME	3 min*
CFM	1.25 (35 LPM)
COIL AIR HOSE LENGTH	16' (4.9 m)
POWER CORD LENGTH	10' (3.0 m)
POWER SOURCE	12 volt accessory power outlet
GAUGE	In-line dial gauge
LIGHT	LED

* (0-35 PSI, Standard Tire: P195/65 R15)



CANVAS BAG



FLOATY FLOATY BALL

CAUTION: HOT • DO NOT HOLD IN HAND WHILE OPERATING • PLACE INFLATOR ON A HARD, CLEAN SURFACE.

1. **DO NOT** run vehicle while inflator is operating. Engine must be turned OFF.
2. **DO NOT** use inflator continuously for more than 10 minutes. Allow unit to cool approximately 25 minutes between uses. Do not leave inflator unattended.
3. **ALWAYS** use a pressure gauge to check tire pressure. **DO NOT** overinflate.
4. Keep inflator out of reach of children.
5. For use with 12 volt DC power outlets rated 15 amps or higher. Do not use with older 8 amp cigarette lighter receptacles.

INFLATE TIRES



1. Screw air hose connector onto tire's valve stem.
2. Plug power cord into 12 volt accessory power outlet.
3. Press on switch to turn on inflator. Inflate tire to manufacturer's recommended air pressure.* When proper pressure is reached, press off switch to turn off inflator. Unplug power cord and remove air hose connector.

*NOTE: Correct tire pressure can be found in vehicle owner's manual or on driver's side door jamb.

TROUBLESHOOTING

Inflator does not turn on:

1. The fuse, located in the plug adapter, may have blown. Unscrew the tip of the plug adapter, remove fuse and inspect. If necessary, replace fuse with one of the same size and amperage.
2. Check vehicle's power outlet fuse; it should be a minimum of 15 amps.
3. Check receptacle and plug terminals for dirt (particularly tobacco). Use a non-conductive probe (not fingers or metal) to dislodge and remove debris.
4. Push the power plug firmly into the receptacle and twist it back and forth.



Inflator runs but does not inflate:

1. Be sure the air hose connector is tightly screwed onto the valve stem.
2. Check tire for leaks. Check hose for breaks and leaks at fittings.

Inflator runs slowly:

1. The inflator may have overheated from excessive use. Shut it off and allow it to cool for 25 minutes.
2. The voltage may be too low. Check the condition of your vehicle's battery.

NOTE: If tire is totally deflated, it is possible that the tire could separate from the rim allowing air to leak out when trying to inflate. In the event this occurs, it may be necessary to jack up the tire prior to inflation.