

INSTRUCTION MANUAL

SAVE THIS MANUAL FOR FUTURE REFERENCE

⚠ WARNING: For your own safety, read the tool instruction manual before using any accessory. Failure to heed these warnings may result in personal injury and serious damage to the pressure washer and the accessory. When servicing this tool, use only identical replacement parts.

- Your washer operates at fluid pressures and velocities high enough to penetrate human and animal flesh, which could result in amputation or other serious injury. Leaks caused by loose fittings or worn or damaged hoses can result in injection injuries. **DO NOT TREAT FLUID INJECTION AS A SIMPLE CUT!** See a physician immediately!
- Inspect the high-pressure hose regularly. Replace the hose immediately if it is damaged, worn, has melted from contacting the engine, or shows any signs of cracks, bubbles, pinholes, or other leakage. Never grasp a high-pressure hose that is leaking or damaged.
- Never touch, grasp or attempt to cover a pinhole or similar water leak on the high-pressure hose. The stream of water IS under high pressure and WILL penetrate skin.
- Make sure hose and fittings are tightened and in good condition. Never hold onto the hose or fittings during operation.
- Do not allow hose to contact muffler.
- Never attach or remove wand or hose fittings while system is pressurized.

⚠ WARNING: Always wear safety glasses. Wear protective clothing to protect against accidental spraying.

NOTICE: The high pressure spray from your pressure washer is capable of causing damage to surfaces such as wood, glass, automobile paint, auto striping and trim, and delicate objects such as flowers and shrubs. Before spraying, check the item to be cleaned to assure yourself that it is strong enough to resist damage from the force of the spray.

NOTE: Before each use inspect the product for damage. Replace any damaged part before use.

In a continued commitment to improve quality, the manufacturer reserves the right to make component changes or design changes when necessary.

SAVE THESE INSTRUCTIONS

SPECIFICATIONS

⚠ WARNING: DO NOT use the extension hoses with pressure washers exceeding the working pressure listed on the hose.

Range of pressure: Not to exceed working pressure listed on the hose
 Spray gun/wand: Fits guns and high pressure pumps with M22 or quick connect connections

ASSEMBLY INSTRUCTIONS

BEFORE ASSEMBLY

1. Shut off the pressure washer and turn off the water supply.
2. Pull trigger on gun handle to relieve any water pressure.
3. Disconnect high pressure hose (A) from pump outlet.

ASSEMBLY

FOR USE AS AN EXTENSION HOSE (FIG. 1)

1. Attach high pressure hose (A) to gun (B). Tighten securely.
2. **M22:** Attach high pressure hose (A) to extension hose (C) using provided adaptor (D). Ensure connections are secure.

Quick Connect: Attach high pressure hose (A) to extension hose (C). Ensure connections are secure.

3. Connect extension hose (C) to pump outlet (E).

FOR USE AS A REPLACEMENT HOSE (FIG. 2)

1. Attach high pressure hose (A) to gun (B). Tighten securely.
2. Connect high pressure hose (A) to pump outlet (E).

FIG. 1

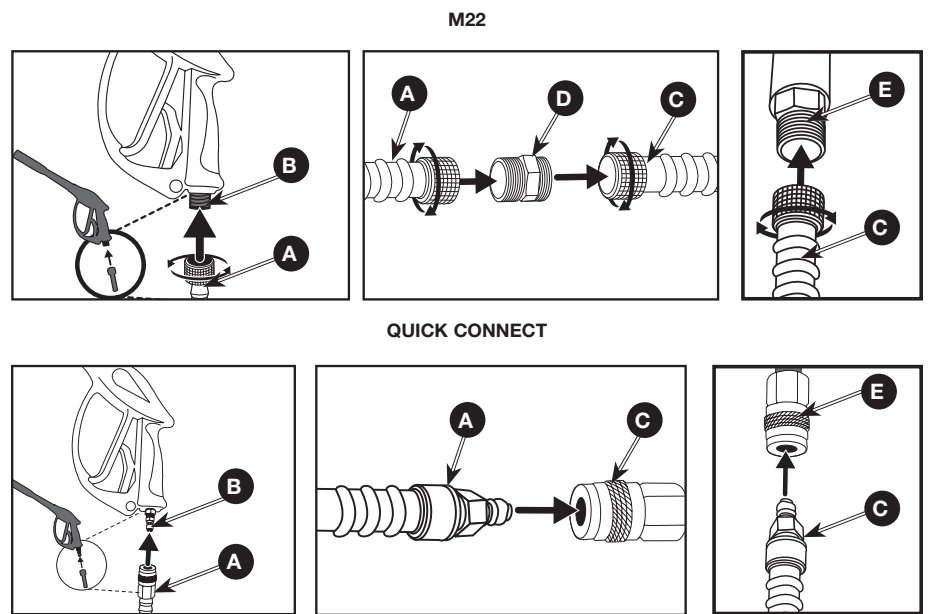


FIG. 2

