



Driven by **PERFORMANCE™**

PRODUCT CATALOG

RESIDENTIAL | COMMERCIAL | INDUSTRIAL

PRESSURE WASHERS | MOBILE TRAILERS | PORTABLE GENERATORS & INVERTERS | HOSES | ACCESSORIES | PUMPS



TABLE OF CONTENTS

- PG 3 RESIDENTIAL PRESSURE WASHERS**
- PG 4 CLEAN MACHINE® SERIES
- PG 5 PREMIUM RESIDENTIAL PRESSURE WASHERS**
- PG 6-7 MEGASHOT™ SERIES
- PG 8 COMMERCIAL PRESSURE WASHERS**
- PG 9 POWERSHOT™ SERIES
- PG 10 PRO SERIES
- PG 10 ALUMINUM SERIES
- PG 11 ALUMINUM WATER BLASTER® SERIES
- PG 11 WATER BLASTER® SERIES
- PG 12 INDUSTRIAL PRESSURE WASHERS**
- PG 13 WATER SHOTGUN® SERIES
- PG 14 INDUSTRIAL SERIES
- PG 14 RENTAL SERIES
- PG 15-16 SANITIZING MISTER
- PG 17-18 SUPER PRO ROLL CAGE SERIES
- PG 19 HOT WATER PRESSURE WASHERS**
- PG 20 BRUTE SERIES
- PG 21-22 TRAILER MOUNTED PRESSURE WASHERS**
- PG 23-24 PREMIUM PORTABLE & INVERTER GENERATORS**
- PG 25-26 COMMERCIAL SERIES
- PG 27-28 INDUSTRIAL SERIES
- PG 29-30 INVERTER GENERATORS AND PARALLEL BOX
- PG 31-32 PREMIUM PORTABLE TRASH PUMPS**
- PG 33-37 HIGH PERFORMANCE HOSES**
- PG 38 PROFESSIONAL CLEANING SOLUTIONS**
- PG 39-41 PREMIUM ACCESSORIES**
- PG 42 POWERBOOST® & LOW OIL SHUTDOWN TECHNOLOGY**
- PG 43-44 PRESSURE WASHER PUMP KITS**
- PG 45 SIMPSON® INFORMATION**
- PG 45 BECOME A DEALER
- PG 45 CETA® TESTING STANDARDS

THE SIMPSON® ADVANTAGE

Driven by Performance™ for more than 50 years, SIMPSON continues to provide the advantage you need to get the job done right every time. We design, engineer and manufacture products that are reliable, durable, and built to perform every time you need them. Whether you are a DIYer or an industry pro, SIMPSON offers an enhanced experience with professional results guaranteed. Join the historic journey and take the ADVANTAGE!

RESIDENTIAL PRESSURE WASHERS

The combination of lightweight portable frames, OEM axial cam pumps, and powerful electric motors or gas engines make the residential pressure washers perfect for any cleaning job around the house.



POWERED by SIMPSON POWERED BY KOHLER.

RESIDENTIAL PRESSURE WASHERS

CLEAN MACHINE® SERIES



BONUS!
Includes on board soap tank



MODEL NUMBER	CM60976(-S)
PART NUMBER	60976 (61016)
PRESSURE RATING	2300 PSI
FLOW RATING	1.2 GPM
ENGINE	SIMPSON® 120V Electric Motor
PUMP	OEM Technologies™ Axial Cam
HOSE	1/4" x 25' x M22
TIRE/WHEEL	10" Never-flat
LIMITED WARRANTY	1 yr Frame, 1yr Pump, 1yr Motor

MODEL NUMBER	CM61083-S <small>LOW OIL SHUTDOWN</small>
PART NUMBER	(61083)
PRESSURE RATING	3400 PSI
FLOW RATING	2.5 GPM
ENGINE	CRX® 208cc
PUMP	OEM Technologies™ Axial Cam
HOSE	5/16" x 25' x M22
TIRE/WHEEL	10" Premium Pneumatic
LIMITED WARRANTY	5yr Frame, 1yr Pump, 2yr Engine



BONUS!
Includes 15" steel surface cleaner



MODEL NUMBER	CM61135(-S) <small>LOW OIL SHUTDOWN</small>
PART NUMBER	(61135)
PRESSURE RATING	2800 PSI
FLOW RATING	2.3 GPM
ENGINE	CRX® 163cc
PUMP	OEM Technologies™ Axial Cam
HOSE	1/4" x 25' x M22, HyFlex™
TIRE/WHEEL	12" Never-flat
LIMITED WARRANTY	5yr Frame, 1yr Pump, 2yr Engine

MODEL NUMBER	CM61117 <small>LOW OIL SHUTDOWN</small>
PART NUMBER	61117
PRESSURE RATING	3300 PSI
FLOW RATING	2.4 GPM
ENGINE	KOHLER® SH Series
PUMP	OEM Technologies™ Axial Cam
HOSE	1/4" x 25' x M22, HyFlex™
TIRE/WHEEL	10" Premium Pneumatic
LIMITED WARRANTY	5yr Frame, 1yr Pump, 2yr Engine

MODEL NUMBER	CM61118 <small>LOW OIL SHUTDOWN</small>
PART NUMBER	61118
PRESSURE RATING	3500 PSI
FLOW RATING	2.5 GPM
ENGINE	KOHLER® SH Series
PUMP	AAA® AX300 PRO Axial
HOSE	5/16" x 25' x M22, MorFlex®
TIRE/WHEEL	10" Premium Pneumatic
LIMITED WARRANTY	5yr Frame, 2yr Pump, 2yr Engine

(-S) Indicates shippable packaging.

LOW OIL SHUTDOWN - Indicates engine is equipped with Low Oil Shutdown Technology. See page 42 for details.



PREMIUM RESIDENTIAL PRESSURE WASHERS



Designed for the do-it-yourselfer that needs a bit more out of a residential pressure washer, our premium residential pressure washers are ready to take on the toughest home projects.



POWERED BY SIMPSON HONDA POWERED BY KOHLER.

PREMIUM RESIDENTIAL PRESSURE WASHERS



MEGASHOT™ SERIES



BONUS!
Includes on board soap tank



MODEL NUMBER	MS60773(-S)	MS61114(-S)	MS60809(-S)
PART NUMBER	60773 (60784)	61114 (61114S)	(60809)
PRESSURE RATING	2800 PSI	2800 PSI	3000 PSI
FLOW RATING	2.3 GPM	2.3 GPM	2.4 GPM
ENGINE	HONDA® GCV160	KOHLER® GTX675 (Lifetime no oil change)	HONDA® GCV160
PUMP	OEM Technologies™ Axial Cam	OEM Technologies™ Axial Cam	OEM Technologies™ Axial Cam
HOSE	1/4" x 25' x M22, MorFlex®	1/4" x 25' x M22, HyFlex™	1/4" x 25' x M22, MorFlex®
TIRE/WHEEL	12" Never-flat	12" Never-flat	12" Never-flat
LIMITED WARRANTY	5yr Frame, 1yr Pump, 2yr Engine	5yr Frame, 1yr Pump, 2yr Engine	5yr Frame, 1yr Pump, 2yr Engine

(-S) Indicates shippable packaging.

BONUS!
Includes 15" steel surface cleaner & on board soap tank



BONUS!
Includes 5-N-1 Nozzle



BONUS!
Includes 5-N-1 Nozzle



MODEL NUMBER	MS60805(-S)	MS61043(-S)* LOW OIL SHUTDOWN	MS61043(-S)* LOW OIL SHUTDOWN
PART NUMBER	(60808)	61043 (61066)	61106 (61107)
PRESSURE RATING	3000 PSI	3000 PSI	3000 PSI
FLOW RATING	2.4 GPM	2.4 GPM	2.4 GPM
ENGINE	HONDA® GCV160	SIMPSON® 212cc	SIMPSON® 208cc
PUMP	OEM Technologies™ Axial Cam	OEM Technologies™ Axial Cam	OEM Technologies™ Axial Cam
HOSE	1/4" x 25' x M22, MorFlex®	1/4" x 25' x M22, MorFlex®	1/4" x 25' x M22, MorFlex®
TIRE/WHEEL	12" Never-flat	10" Premium Pneumatic	10" Premium Pneumatic
LIMITED WARRANTY	5yr Frame, 1yr Pump, 2yr Engine	5yr Frame, 1yr Pump, 2yr Engine	5yr Frame, 1yr Pump, 2yr Engine

(-S) Indicates shippable packaging.

*Contact a Sales Representative for availability. See page 45 for information. *49 State Compliant

*Contact a Sales Representative for availability. See page 45 for information. *50 State Compliant

LOW OIL SHUTDOWN - Indicates engine is equipped with Low Oil Shutdown Technology. See page 42 for details.

PREMIUM RESIDENTIAL PRESSURE WASHERS



MEGASHOT™ SERIES

GAS POWERED



MODEL NUMBER	MS60763(-S)	MS31025HT	MSH3125-S	MS61049(-S)*
PART NUMBER	(60763)	60652	60551	61049 (61062)
PRESSURE RATING	3100 PSI	3200 PSI	3200 PSI	3300 PSI
FLOW RATING	2.4 GPM	2.5 GPM	2.5 GPM	2.4 GPM
ENGINE	KOHLER® RH265	HONDA® GC190	HONDA® GC190	HONDA® GC190
PUMP	OEM Technologies™ Axial Cam	OEM Technologies™ Axial Cam	OEM Technologies™ Axial Cam	OEM Technologies™ Axial Cam
HOSE	1/4" x 25' x M22, MorFlex®	1/4" x 25' x M22, MorFlex®	1/4" x 25' x M22, MorFlex®	1/4" x 35' x M22, MorFlex®
TIRE/WHEEL	12" Never-flat	10" Premium Pneumatic	10" Premium Pneumatic	10" Premium Pneumatic
LIMITED WARRANTY	5yr Frame, 1yr Pump, 2yr Engine	5yr Frame, 1yr Pump, 2yr Engine	5yr Frame, 1yr Pump, 2yr Engine	5yr Frame, 1yr Pump, 2yr Engine

*Contact a Sales Representative for availability
See page 45 for information.

BONUS!
Includes 15" steel
surface cleaner



MODEL NUMBER	MS61033(-S)	MS60921	MS61124(-S) <small>LOW OIL SHUTDOWN</small>	MS61084(-S) <small>LOW OIL SHUTDOWN</small>
PART NUMBER	(61033)	60921	61124	61084 (61085)
PRESSURE RATING	3300 PSI	3300 PSI	3400 PSI	3400 PSI
FLOW RATING	2.4 GPM	2.4 GPM	2.4 GPM	2.5 GPM
ENGINE	HONDA® GC190	HONDA® GC190	KOHLER® SH Series	KOHLER® SH Series
PUMP	OEM Technologies™ Axial Cam	OEM Technologies™ Axial Cam	OEM Technologies™ Axial Cam	OEM Technologies™ Axial Cam
HOSE	1/4" x 25' x M22, MorFlex®	1/4" x 25' x M22, MorFlex®	5/16" x 35' x M22, MorFlex®	5/16" x 25' x M22, MorFlex®
TIRE/WHEEL	10" Premium Pneumatic	10" Premium Pneumatic	10" Premium Pneumatic	10" Premium Pneumatic
LIMITED WARRANTY	5yr Frame, 1yr Pump, 2yr Engine	5yr Frame, 1yr Pump, 2yr Engine	5yr Frame, 1yr Pump, 3yr Engine	5yr Frame, 1yr Pump, 2yr Engine

(-S) Indicates shippable packaging.

LOW OIL SHUTDOWN - Indicates engine is equipped with Low Oil Shutdown Technology. See page 42 for details.

COMMERCIAL PRESSURE WASHERS



Our commercial pressure washers are perfect for professionals who take on jobs a bit larger than the ones found around the house.

COMMERCIAL PRESSURE WASHERS



POWERSHOT™ SERIES

GAS POWERED



BONUS!
Includes 15" steel surface cleaner



MODEL NUMBER	PS3228-S <small>LOW OIL SHUTDOWN</small>	PS61002(-S) <small>LOW OIL SHUTDOWN</small>	PS61115(-S) <small>LOW OIL SHUTDOWN</small>	PS60995(-S) <small>LOW OIL SHUTDOWN</small>
PART NUMBER	60629	61002 (61014)	61115	60995 (60996)
PRESSURE RATING	3300 PSI	3500 PSI	3500 PSI	3600 PSI
FLOW RATING	2.5 GPM	2.5 GPM	2.5 GPM	2.5 GPM
ENGINE	HONDA® GX200	HONDA® GX200	KOHLER® SH Series	HONDA® GX200
PUMP	AAA™ Triplex	AAA™ AX300 Axial Cam	AAA™ AX300 Axial Cam	AAA™ Triplex
HOSE	5/16" x 25' x M22, MorFlex®	5/16" x 25' x M22, MorFlex®	5/16" x 25' x M22, MorFlex®	5/16" x 25' x M22, MorFlex®
TIRE/WHEEL	10" Premium Pneumatic	10" Premium Pneumatic	10" Premium Pneumatic	10" Premium Pneumatic
LIMITED WARRANTY	10yr Frame, 5yr Pump, 3yr Engine	10yr Frame, 2yr Pump, 3yr Engine	10yr Frame, 2yr Pump, 3yr Engine	10yr Frame, 5yr Pump, 3yr Engine

COMMERCIAL PRESSURE WASHERS



PRO SERIES

GAS POWERED



OUR BEST ENGINE COVERAGE GUARANTEED **5 YEAR EXTENDED PROTECTION PLUS**



MODEL NUMBER	PS61044(-S) <small>POWER BOOST</small>	PS61042 <small>POWER BOOST</small>	PS60982(-S) <small>POWER BOOST LOW OIL SHUTDOWN</small>	PS60918 <small>LOW OIL SHUTDOWN</small>
PART NUMBER	61044 (61064)	61042	60982 (61000)	60918
PRESSURE RATING	3400 PSI	3400 PSI	3700 PSI	4000 PSI
FLOW RATING	2.3 GPM	2.5 GPM	2.5 GPM	3.5 GPM
ENGINE	HONDA® GS190	BRIGGS & STRATTON® CRX950	HONDA® GX200	HONDA® GX270
PUMP	AAA™ AX300 PRO Axial	AAA™ AX300 PRO Axial	AAA™ Triplex	AAA™ Triplex
HOSE	5/16" x 25' x M22, MorFlex®	5/16" x 25' x M22, MorFlex®	5/16" x 50' x M22, MorFlex®	3/8" x 50' x QC, Steel-braided Monster
TIRE/WHEEL	10" Premium Pneumatic	10" Premium Pneumatic	10" Premium Pneumatic	13" Premium Pneumatic
LIMITED WARRANTY	10yr Frame, 5yr Pump, 3+2yr Engine	10yr Frame, 5yr Pump, 3+2yr Engine	10yr Frame, 5yr Pump, 3+2yr Engine	10yr Frame, 5yr Pump, 3+2yr Engine

ALUMINUM SERIES

GAS POWERED



MODEL NUMBER	PS60869 <small>LOW OIL SHUTDOWN</small>	PS4240 <small>LOW OIL SHUTDOWN</small>	PS60843 <small>LOW OIL SHUTDOWN</small>
PART NUMBER	60869	60456	60843
PRESSURE RATING	4000 PSI	4200 PSI	4400 PSI
FLOW RATING	3.5 GPM	4.0 GPM	4.0 GPM
ENGINE	HONDA® GX270	HONDA® GX390	SIMPSON® 420cc
PUMP	AAA™ Triplex	AAA™ Triplex	AAA™ Triplex
HOSE	3/8" x 50' x QC, Steel-braided Monster	3/8" x 50' x QC, Steel-braided Monster	3/8" x 50' x QC, Steel-braided Monster
TIRE/WHEEL	13" Premium Pneumatic	13" Premium Pneumatic	13" Premium Pneumatic
LIMITED WARRANTY	10yr Frame, 5yr Pump, 3yr Engine	10yr Frame, 5yr Pump, 3yr Engine	10yr Frame, 5yr Pump, 3yr Engine

MODEL NUMBER	ALH3228-S <small>LOW OIL SHUTDOWN</small>	ALH3425-S <small>LOW OIL SHUTDOWN</small>	ALH4240 <small>LOW OIL SHUTDOWN</small>
PART NUMBER	60735	60689	60688
PRESSURE RATING	3400 PSI	3600 PSI	4200 PSI
FLOW RATING	2.5 GPM	2.5 GPM	4.0 GPM
ENGINE	HONDA® GX200	HONDA® GX200	HONDA® GX390
PUMP	CAT PUMPS® Triplex	AAA™ Triplex	CAT PUMPS® Triplex
HOSE	5/16" x 25' x QC, Steel-braided Monster	5/16" x 35' x M22, MorFlex®	3/8" x 50' x QC, Steel-braided Monster
TIRE/WHEEL	10" Premium Pneumatic	10" Premium Pneumatic	13" Premium Pneumatic
LIMITED WARRANTY	10yr Frame, 5yr Pump, 3yr Engine	10yr Frame, 5yr Pump, 3yr Engine	10yr Frame, 5yr Pump, 3yr Engine

LOW OIL SHUTDOWN - Indicates engine is equipped with Low Oil Shutdown Technology. See page 42 for details.

POWER BOOST - Indicates pump equipped with PowerBoost® Technology. See page 42 for details.
(-S) Indicates shippable packaging.

LOW OIL SHUTDOWN - Indicates engine is equipped with Low Oil Shutdown Technology. See page 42 for details.

POWER BOOST - Indicates pump equipped with PowerBoost® Technology. See page 42 for details.

(-S) Indicates shippable packaging.

COMMERCIAL PRESSURE WASHERS

ALUMINUM WATER BLASTER® SERIES



GAS POWERED



LIGHTWEIGHT ALUMINUM FRAME!

LIGHTWEIGHT ALUMINUM FRAME!

LIGHTWEIGHT ALUMINUM FRAME!



MODEL NUMBER	ALWB60827 <small>LOW OIL SHUTDOWN</small>	ALWB60828 <small>LOW OIL SHUTDOWN</small>	ALWB60825 <small>LOW OIL SHUTDOWN</small>
PART NUMBER	60827	60828	60825
PRESSURE RATING	4200 PSI	4200 PSI	4400 PSI
FLOW RATING	4.0 GPM	4.0 GPM	4.0 GPM
ENGINE	HONDA® GX390	HONDA® GX390	SIMPSON® 420cc
PUMP	AAA™ Triplex	CAT PUMPS® Triplex	AAA™ Triplex
HOSE	3/8" x 50' x QC, Steel-braided Monster	3/8" x 50' x QC, Steel-braided Monster	3/8" x 50' x QC, Steel-braided Monster
TIRE/WHEEL	13" Premium Pneumatic	13" Premium Pneumatic	13" Premium Pneumatic
LIMITED WARRANTY	10yr Frame, 5yr Pump, 3yr Engine	10yr Frame, 5yr Pump, 3yr Engine	10yr Frame, 5yr Pump, 3yr Engine

WATER BLASTER® SERIES

GAS POWERED



MODEL NUMBER	WB4200 <small>LOW OIL SHUTDOWN</small>	WB60824 <small>LOW OIL SHUTDOWN</small>
PART NUMBER	60205	60824
PRESSURE RATING	4200 PSI	4400 PSI
FLOW RATING	4.0 GPM	4.0 GPM
ENGINE	HONDA® GX390	SIMPSON® 420cc
PUMP	AAA™ Triplex	AAA™ Triplex
HOSE	3/8" x 50' x QC, Steel-braided Monster	3/8" x 50' x QC, Steel-braided Monster
TIRE/WHEEL	13" Premium Pneumatic	13" Premium Pneumatic
LIMITED WARRANTY	10yr Frame, 5yr Pump, 3yr Engine	10yr Frame, 5yr Pump, 3yr Engine

INDUSTRIAL PRESSURE WASHERS



Featuring high-performance, industrial-grade pumps and welded robust steel frames, these machines are built to take on the toughest industrial jobs.



LOW OIL SHUTDOWN - Indicates engine is equipped with Low Oil Shutdown Technology. See page 42 for details.



POWERED by **SIMPSON** POWERED by **HONDA** POWERED BY **KOHLER** POWERED by **VANGUARD**



INDUSTRIAL PERFORMANCE

- FEATURING HIGH PERFORMANCE, AAA™ OR COMET INDUSTRIAL GRADE PUMPS.
- EQUIPPED WITH A BOLT-ON EXTERNAL UNLOADER AND BYPASS HOSE.
- DURABLE HEAVY GAUGE FRAME DESIGN.



WATER SHOTGUN® SERIES

GAS POWERED



Includes external fuel tank

MODEL NUMBER	WS4050V	WS5050H
PART NUMBER	60242	60243
PRESSURE RATING	4000 PSI	5000 PSI
FLOW RATING	5.0 GPM	5.0 GPM
ENGINE	VANGUARD® V-Twin / E-Start	HONDA® GX630 / E-Start
PUMP	COMET Premium Series	COMET Premium Series
HOSE	3/8" x 50' x QC, R2 Wrapped Rubber	3/8" x 50' x QC, R2 Wrapped Rubber
TIRE/WHEEL	13" Premium Aluminum	13" Premium Aluminum
LIMITED WARRANTY	10yr Frame, 7yr Pump, 3yr Engine	10yr Frame, 7yr Pump, 3yr Engine

*Battery not included. Requires 12V Garden tractor battery type U1. *Battery not included. Requires 12V Garden tractor battery type U1.

LOW OIL SHUTDOWN - Indicates engine is equipped with Low Oil Shutdown Technology. See page 42 for details.

INDUSTRIAL PRESSURE WASHERS



INDUSTRIAL SERIES



LOW OIL SHUTDOWN

- Featured on all units (Excludes electric and HONDA® GC models). See page 42 for details.



MODEL NUMBER	PART NUMBER	PRESSURE RATING	FLOW RATING	DRIVE	ENGINE/MOTOR	PUMP	TIRE/WHEEL	HOSE	LIMITED WARRANTY
IS61129	61129	1500 PSI	2.0 GPM	DIRECT	120V ELECTRIC	AAA™ Industrial Triplex	N/A- HANDHELD	5/16" x 25' x QC, Steel-braided Monster	5yr Pump, 1yr Motor
IS61023 ¹	61023	2700 PSI	2.7 GPM	DIRECT	HONDA® GC190	AAA™ AX300 PRO Axial	10" Foam Filled	5/16" x 50' x QC, Steel-braided Monster	10yr Frame, 3yr Pump, 2yr Engine
IS61022 ¹	61022	3000 PSI	2.7 GPM	DIRECT	HONDA® GX200	AAA™ AX300 PRO Axial	10" Foam Filled	5/16" x 50' x QC, Steel-braided Monster	10yr Frame, 3yr Pump, 3+2yr Engine
IS61024 ²	61024	3000 PSI	3.0 GPM	DIRECT	HONDA® GX200	AAA™ Industrial Triplex	10" Foam Filled	3/8" x 50' x QC, Steel-braided Monster	10yr Frame, 7yr Pump, 3+2yr Engine
IS61026 ²	61026	3500 PSI	4.0 GPM	DIRECT	HONDA® GX270	AAA™ Industrial Triplex	13" Foam Filled	3/8" x 50' x QC, Steel-braided Monster	10yr Frame, 7yr Pump, 3+2yr Engine
IS61028 ²	61028	4400 PSI	4.0 GPM	DIRECT	HONDA® GX390	AAA™ Industrial Triplex	13" Foam Filled	3/8" x 50' x QC, Steel-braided Monster	10yr Frame, 7yr Pump, 3+2yr Engine
IS61029 ²	61029	4400 PSI	4.0 GPM	DIRECT	SIMPSON® 420cc	AAA™ Industrial Triplex	13" Foam Filled	3/8" x 50' x QC, Steel-braided Monster	10yr Frame, 7yr Pump, 3+2yr Engine
IS61030 ²	61030	4200 PSI	4.0 GPM	BELT	HONDA® GX390	COMET Industrial Triplex	13" Foam Filled	3/8" x 50' x QC, Steel-braided Monster	10yr Frame, 7yr Pump, 3+2yr Engine

¹Black welded heavy gauge steel frame, powdered coated for corrosion resistance.

²Ultra lightweight aircraft grade aluminum frame.



RENTAL SERIES



FEATURING:

- Steel dashboards with set up/use instructions
- Gas and 230V electric units with heavy-duty aluminum frames
- Gas and 230V electric units have bolt-on external unloader and bypass hose
- Digital hour meter
- Heavy-duty inlet filter
- Engine vibration dampeners
- Professional grade insulated trigger gun and lance



LOW OIL SHUTDOWN - Featured on all units (Excludes electric models). See page 42 for details.

MODEL NUMBER	PART NUMBER	PRESSURE RATING	FLOW RATING	DRIVE	ENGINE/MOTOR	PUMP	TIRE/WHEEL	HOSE	LIMITED WARRANTY
IR61094	61094	1500 PSI	2.0 GPM	DIRECT	120V ELECTRIC	AAA™ Industrial Triplex	8" Never-Flats	3/8" x 25' x QC, Steel-braided Monster	5yr Frame, 5yr Pump, 1yr Motor
IR61130	61130	2000 PSI	3.0 GPM	DIRECT	230V ELECTRIC	AAA™ Industrial Triplex	13" Foam Filled	3/8" x 50' x QC, Steel-braided Monster	10yr Frame, 7yr Pump, 1yr Motor
IR61131	61131	2500 PSI	3.5 GPM	DIRECT	230V ELECTRIC	AAA™ Industrial Triplex	13" Foam Filled	3/8" x 50' x QC, Steel-braided Monster	10yr Frame, 7yr Pump, 1yr Motor
IR61132	61132	3000 PSI	4.0 GPM	DIRECT	230V ELECTRIC	AAA™ Industrial Triplex	13" Foam Filled	3/8" x 50' x QC, Steel-braided Monster	10yr Frame, 7yr Pump, 1yr Motor
IR61143	61143	2700 PSI	3.0 GPM	DIRECT	HONDA® GX200	AAA™ Industrial Triplex	10" Foam Filled	3/8" x 50' x QC, Steel-braided Monster	10yr Frame, 7yr Pump, 3yr Engine
IR61095	61095	3000 PSI	3.0 GPM	DIRECT	HONDA® GX200	AAA™ Industrial Triplex	10" Foam Filled	3/8" x 50' x QC, Steel-braided Monster	10yr Frame, 7yr Pump, 3yr Engine
IR61133	61133	3500 PSI	4.0 GPM	DIRECT	HONDA® GX270	AAA™ Industrial Triplex	13" Foam Filled	3/8" x 50' x QC, Steel-braided Monster	10yr Frame, 7yr Pump, 3yr Engine
IR61134	61134	4400 PSI	4.0 GPM	DIRECT	SIMPSON® 420cc	AAA™ Industrial Triplex	13" Foam Filled	3/8" x 50' x QC, Steel-braided Monster	10yr Frame, 7yr Pump, 3yr Engine
IR61096	61096	4400 PSI	4.0 GPM	DIRECT	HONDA® GX390	AAA™ Industrial Triplex	13" Foam Filled	3/8" x 50' x QC, Steel-braided Monster	10yr Frame, 7yr Pump, 3yr Engine

INTRODUCING THE SM1200 ALL IN ONE Sanitizing Mister and Pressure Washing System



VERSATILE: The new Simpson SM1200 provides misting and powerful pressure washing all-in-one machine.

PORTABLE: The small, lightweight design is easy to maneuver and transport, so you can use the SM1200 inside or out.

POWERFUL: With its powerful self-priming supply pump, the SM1200 can draw water or chemicals vertically up to 5 feet.



DESIGNED FOR INTERIOR & EXTERIOR USE

PROFESSIONAL MISTING NOZZLE	SELF-PRIMING SUPPLY PUMP	ELECTRIC INDUCTION MOTOR	DUAL-ACTION METERING VALVE	AAA™ INDUSTRIAL TRIPLEX PUMP	HIGH PRESSURE/CHEMICAL HOSE
WITH QC PLUG					

*PRODUCT IMAGES MAY VARY SLIGHTLY FROM THE PRODUCT YOU RECEIVE. PLEASE CONTACT YOUR SALES REPRESENTATIVE FOR QUESTIONS ON YOUR PRODUCT.

- ✓ **PROFESSIONAL MISTING NOZZLE:** Designed to deliver a uniform mist resulting in an outstanding disinfecting application
- ✓ **SELF-PRIMING SUPPLY PUMP:** Allows the SM1200 to draw water or chemicals vertically up to 5 feet through its large 3/8" supply hose (Included)
- ✓ **ELECTRIC INDUCTION MOTOR:** 1.6 horsepower, 120-volt, 35 foot power cord with GFCI is designed to operate from any standard 15-amp outlet
- ✓ **DUAL-ACTION METERING VALVE:** Allows the user to quickly switch between misting and pressure washing modes
- ✓ **AAA™ INDUSTRIAL TRIPLEX PUMP:** Designed to deliver top performance
- ✓ **HIGH PRESSURE/CHEMICAL HOSE:** The 75 foot high pressure hose is designed to handle a wide variety of cleaning and sanitation chemicals for misting and high pressure washing

MODEL NUMBER	SM1200
PART NUMBER	61102
PRESSURE RATING	1200 PSI
FLOW RATING	2.0 GPM
ENGINE	120V MOTOR
PUMP	AAA™ Triplex + Self-Priming Supply Pump
HOSE	1/4" x 75' x QC, High Pressure/5' Supply Hose
TIRE/WHEEL	10" Never-Flat
LIMITED WARRANTY	5yr Frame, 5yr Pump, 4yr Self Priming Pump, 1yr Motor



HEALTH CARE

- Hospitals
- Medical & Dental Offices
- Pharmacies
- Ambulances

VETERINARY

- Animal Kennels
- Animal Transportation Vehicles & Units
- Examination & Surgery Rooms

STADIUMS & ARENAS

- Sport Complexes
- Concert Halls
- Amphitheaters

FOOD PROCESSING & HANDLING

- Restaurants
- Cafeterias & Kitchens
- Refrigerated Storage Units
- Food Processing Plants

FARMING & AGRICULTURE

- Animal Pens
- Egg & Meat Processing Facilities
- Fleet Equipment

MAINTENANCE & HOSPITALITY

- Hotels & Guest Services
- Fitness Center & Pools
- Guest Rooms
- Banquet Halls & Conference Rooms
- Lobbies & Bars

EDUCATION

- Schools & Daycare Facilities
- Play Grounds & Equipment
- Cafeterias
- Desks & Chairs
- Bathrooms

GROCERY & RETAIL

- Food Markets
- Department Stores
- Clothing & Specialty Shops
- Barber Shops & Salons

FITNESS FACILITIES

- Gyms & Locker Rooms
- Weight Lifting Equipment
- Aerobic & Equipment
- Spas/Saunas & Tanning Rooms
- Showers
- Water Fountains

PUBLIC TRANSPORTATION

- Buses & Trains
- Planes & Helicopters
- Boats & Ferries
- Ships & Cruise lines
- Rental Cars & Facilities

MANUFACTURING FACILITIES

- Material Handling Plants
- Packaging Facilities
- Warehouse & Distribution Centers

Included with SM1200 (61102)	Additional Accessories	Optional Dual Misting Kit (# 88256)
75' High-Pressure Chemical Hose x1	75' High-Pressure Chemical Hose x1 (#30208)	Three-Way Hose Adapter x1
Pressure Washer Spray Gun x1	Dedicated Misting Spray Gun x1 (# 88257)	75' High-Pressure Chemical Hose x1
16" Steel Wand x1	31" Spray Wand (# 80479)	Dedicated Misting Spray Gun x1
4-Piece QC Nozzle x1	Misting Nozzle with QC (#88258)	
QC Misting Nozzle x1	Misting Nozzle with MNPT Connection (#88259)	
5' Supply Hose x1	Three-Way Hose Adapter (#88260)	
Dedicated spray gun and misting nozzle with QC hose connection x1		

INDUSTRIAL PRESSURE WASHERS

SUPER PRO ROLL CAGE SERIES

GAS POWERED



HEAVY DUTY HOSE REELS AVAILABLE

SOLD SEPARATELY. SEE NEXT PAGE FOR DETAILS OR PAGE 41.



65200

SMALL

31" x 24.25" x 28.25"



65208

MEDIUM

42" x 36.25" x 33.5"



65228

LARGE

47.5" x 29.5" x 38.5"

Large external fuel tank for extended run time.



INDUSTRIAL PRESSURE WASHERS

SUPER PRO ROLL CAGE SERIES

GAS POWERED



LOW OIL SHUTDOWN - Featured on all units (Excludes 65228). See page 42 for details.

MODEL NUMBER	PART NUMBER	PRESSURE RATING	FLOW RATING	DRIVE	ENGINE	PUMP	TIRE/WHEEL	HOSE	LIMITED WARRANTY
SMALL									
SW3625HADS	65200	3600 PSI	2.5 GPM	DIRECT	HONDA® GX200	AAA™ Industrial Triplex	10" Premium Pneumatic	5/16" x 25' x QC, Steel Braided	10yr Frame, 5yr Pump, 3yr Engine
SW3625SADS	65202	3600 PSI	2.5 GPM	DIRECT	SIMPSON® 208cc	AAA™ Industrial Triplex	10" Premium Pneumatic	5/16" x 25' x QC, Steel Braided	10yr Frame, 5yr Pump, 3yr Engine
MEDIUM									
SW4035HADM	65203	4000 PSI	3.5 GPM	DIRECT	HONDA® GX270	AAA™ Industrial Triplex	10" Premium Pneumatic	3/8" x 50' x QC, Steel Braided	10yr Frame, 5yr Pump, 3yr Engine
SW4440HCDM	65206	4400 PSI	4.0 GPM	DIRECT	HONDA® GX390	AAA™ Industrial Triplex	10" Premium Pneumatic	3/8" x 50' x QC, Steel Braided	10yr Frame, 5yr Pump, 3yr Engine
SW4440SCDM	65208	4400 PSI	4.0 GPM	DIRECT	SIMPSON® 420cc	AAA™ Industrial Triplex	10" Premium Pneumatic	3/8" x 50' x QC, Steel Braided	10yr Frame, 5yr Pump, 3yr Engine
SW4440HCBM	65209	4200 PSI	4.0 GPM	BELT	HONDA® GX390	AAA™ Industrial Triplex	10" Premium Pneumatic	3/8" x 50' x QC, Steel Braided	10yr Frame, 5yr Pump, 3yr Engine
SW4440SCBDM	65211	4400 PSI	4.0 GPM	BELT	SIMPSON® 420cc	AAA™ Industrial Triplex	10" Premium Pneumatic	3/8" x 50' x QC, Steel Braided	10yr Frame, 5yr Pump, 3yr Engine
LARGE									
SW3080HUGL	65217*	3000 PSI	8.0 GPM	GEAR	HONDA® GX690	UDOR Industrial Triplex	13" Premium Pneumatic	3/8" x 50' x QC, Steel Braided	10yr Frame, 7yr Pump, 3yr Engine
SW4060SUGL	65219*	4000 PSI	6.0 GPM	GEAR	SIMPSON® 680cc	UDOR Industrial Triplex	13" Premium Pneumatic	3/8" x 50' x QC, Steel Braided	10yr Frame, 7yr Pump, 3yr Engine
SW5050HCGL	65227*	5000 PSI	5.0 GPM	GEAR	HONDA® GX690	UDOR Industrial Triplex	13" Premium Pneumatic	3/8" x 50' x QC, Steel Braided	10yr Frame, 7yr Pump, 3yr Engine
SW7040KCGL	65228*	7000 PSI	4.0 GPM	GEAR	KOHLER® CH750	UDOR Industrial Triplex	13" Premium Pneumatic	3/8" x 50' x QC, Steel Braided	10yr Frame, 7yr Pump, 3yr Engine

*Battery not included. Requires 12V Garden tractor battery type U1.

HIGH-PERFORMANCE INDUSTRIAL FEATURES



Strong steel lifting points for quick crane lifting and **reinforced welded design** with solid wheel axle for easy forklift transfer.

On small and medium models ONLY.



Bolt-on external unloader with bypass hose provides durability for extended pump life.



Four wheel, heavy gauge 1.5" steel frame design with a wheel locking brake system.



High & low pressure mountable hose reels available. (Sold separately)



Premium SIMPSON®, HONDA® or KOHLER® engines for powerful performance.

HOSE REELS ALSO LISTED IN ACCESSORIES SECTION ON PAGE 41.

PORTABLE



PART NUMBER	80399	80490	80403	80401
MAX PRESSURE	5000 PSI	5000 PSI	5000 PSI	5000 PSI
MAX TEMP	212° F	212° F	212° F	212° F
HOSE CAPACITY	100' x 3/8" or 125' x 1/4"	100' x 3/8" or 125' x 1/4"	200' x 3/8" or 250' x 1/4"	100' x 3/8" or 125' x 1/4"
MATERIAL	Heavy-duty Steel Construction	Heavy-duty Steel Construction	Heavy-duty Steel Construction	Heavy-duty Steel Construction

*Does not have Hose Reel Guide

HOSE REEL INSTALLATION KITS ALL INSTALLATION KITS COME COMPLETE WITH JUMPER HOSES & HARDWARE. INSTALLATION KITS MUST BE PURCHASED IN ORDER FOR HOSE REEL TO BE CONNECTED TO UNIT.

PART #	80381	80382	80383
DESCRIPTION	Roll Cage low pressure kit	Small Roll Cage high pressure kit	M/L Roll Cage high pressure kit

HOT WATER PRESSURE WASHERS



Removing heavy grease, oil, salt, and algae can be a tough job but SIMPSON's hot water line is up to the task. With sizes ranging from the Mini Brute to the Super Brute, there is a SIMPSON hot-water machine ready to take on the toughest jobs no matter how big or small.



HOT WATER PRESSURE WASHERS

BRUTE SERIES



GAS POWERED ELECTRIC INDUCTION MOTOR



MINI BRUTE^{1,3}



KING BRUTE



BIG BRUTE^{2,3}



BIG BRUTE^{2,3}

MODEL NUMBER	MB1518	KB3028	BB65106 <small>LOW OIL SHUTDOWN</small>	BB65105 <small>LOW OIL SHUTDOWN</small>
PART NUMBER	60363	65100	65106	65105
PRESSURE RATING	1500 PSI	3000 PSI	4000 PSI	4000 PSI
FLOW RATING	1.8 GPM	2.8 GPM	4.0 GPM	4.0 GPM
ENGINE/MOTOR	120 V Electric	BRIGGS & STRATTON® OHV 1100	HONDA® GX390	VANGUARD® V-Twin
PUMP	AAA® Triplex	CAT PUMPS® Industrial Triplex	COMET Industrial Triplex	COMET Industrial Triplex
ENGINE FUEL CAPACITY	N/A	.75 gal Gasoline	6.0 gal Gasoline	6.0 gal Gasoline
BURNER FUEL CAPACITY	4.0 gal Diesel	5.0 gal Diesel	11 gal Diesel	11 gal Diesel
DRIVE	Direct Drive	Direct Drive	Direct Drive	Direct Drive
START	Electric	Recoil	E-Start	E-Start
TIRE/ WHEEL	13" Premium Pneumatic	13" Premium Pneumatic	10" Premium Pneumatic	10" Premium Pneumatic
LIMITED WARRANTY	10yr Frame, 5yr Pump, 1yr Motor	10yr Frame, 5yr Pump, 2yr Engine	10yr Frame, 5yr Pump, 3yr Engine	10yr Frame, 5yr Pump, 3yr Engine



BIG BRUTE^{2,3}



SUPER BRUTE^{2,3}

65110

SUPER BRUTE^{2,3}

MODEL NUMBER	BB65108 <small>LOW OIL SHUTDOWN</small>	SB3555 <small>LOW OIL SHUTDOWN</small>	SB4066 <small>LOW OIL SHUTDOWN</small>
PART NUMBER	65108	65110	65115
PRESSURE RATING	4000 PSI	3500 PSI	4000 PSI
FLOW RATING	4.0 GPM	5.5 GPM	6.6 GPM
ENGINE/MOTOR	VANGUARD® V-Twin	VANGUARD®570cc	SIMPSON® 679cc
PUMP	UDOR Industrial Triplex	COMET Premium Series Industrial Triplex	UDOR Industrial Triplex
ENGINE FUEL CAPACITY	6.0 gal Gasoline	10 gal Gasoline	10 gal Gasoline
BURNER FUEL CAPACITY	11 gal Diesel	10 gal Diesel	10 gal Diesel
DRIVE	Gear Drive	Belt Drive	Gear Box
START	E-Start	E-Start	E-Start
TIRE/ WHEEL	10" Premium Pneumatic	Forklift Feet / Permanent Mount	Forklift Feet / Permanent Mount
LIMITED WARRANTY	10yr Frame, 7yr Pump, 3yr Engine	10yr Frame, 7yr Pump, 3yr Engine	10yr Frame, 7yr Pump, 3yr Engine



65110

SUPER BRUTE^{2,3}

MODEL NUMBER	SB65123 <small>LOW OIL SHUTDOWN</small>
PART NUMBER	65123
PRESSURE RATING	3500 PSI
FLOW RATING	5.5 GPM
ENGINE/MOTOR	HONDA® GX630
PUMP	General Pump®
ENGINE FUEL CAPACITY	10 gal Gasoline
BURNER FUEL CAPACITY	10 gal Diesel
DRIVE	Belt Drive
START	E-Start
TIRE/ WHEEL	Forklift Feet / Permanent Mount
LIMITED WARRANTY	10yr Frame, 5yr Pump, 3yr Engine

¹ MINI BRUTE includes a 15 amp high limit switch and 35' GFCI cord; not pictured.
² Battery not included on E-Start units. Requires 12V Garden tractor battery Type U1.
³ All Brute series models come standard with gun, lance, hose and nozzles.

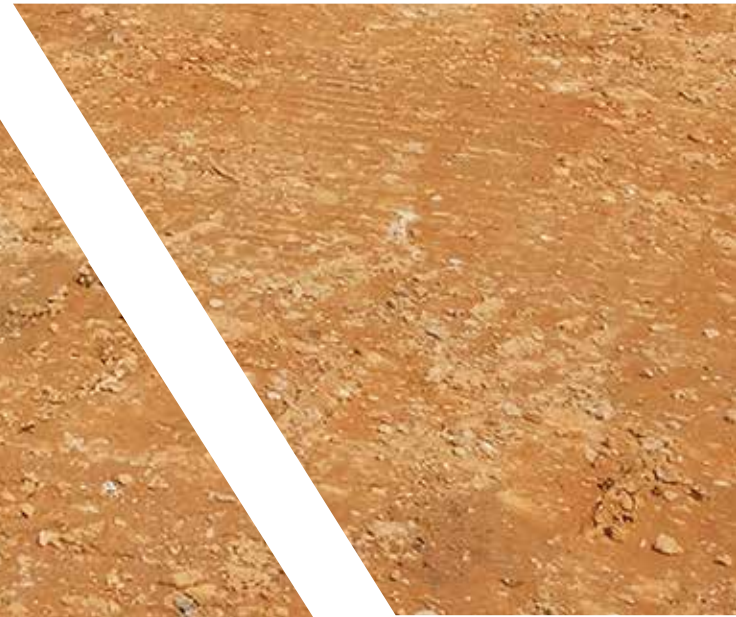
Contact a Sales Representative for more details. See page 45 for information.
LOW OIL SHUTDOWN Indicates engine is equipped with Low Oil Shutdown Technology. See page 42 for details.



TRAILER MOUNTED PRESSURE WASHERS



SIMPSON's mobile pressure washing systems will handle a variety of tough commercial cleaning applications. These products are perfectly suited for contract cleaners, mobile detailers, municipalities, resorts, and many other professionals. SIMPSON trailers are NATM certified as an over-the-road pressure washer system.



MOBILE TRAILER PRESSURE WASHERS



- ✓ CUSTOM SUPERIOR CRAFTSMANSHIP
- ✓ THICK WALL RECTANGULAR STEEL TUBING



95001



95003



95006

	STAGE 1A COLD WATER				STAGE 1B COLD WATER				STAGE 1C HOT WATER					
MODEL NUMBER	95000	LOW OIL SHUTDOWN	95001	LOW OIL SHUTDOWN	95002	LOW OIL SHUTDOWN	95003*	LOW OIL SHUTDOWN	95004*	LOW OIL SHUTDOWN	95005*	LOW OIL SHUTDOWN	95006*	LOW OIL SHUTDOWN
PRESSURE RATING	3200 PSI		3800 PSI		4200 PSI		4200 PSI		4200 PSI		4000 PSI		4000 PSI	
FLOW RATING	2.8 GPM		3.5 GPM		4.0 GPM		4.0 GPM		4.0 GPM		4.0 GPM		4.0 GPM	
ENGINE	HONDA® GX200		HONDA® GX270		HONDA® GX390		HONDA® GX390 w/ Recoil & E-Start		VANGUARD V-TWIN w/ E-Start		HONDA® GX390 w/ Recoil & E-Start		VANGUARD V-TWIN w/ E-Start	
PUMP	CAT PUMPS® Triplex		CAT PUMPS® Triplex		CAT PUMPS® Triplex		CAT PUMPS® Triplex		CAT PUMPS® Triplex		COMET Triplex		COMET Triplex	
TRAILER SIZE	7' Overall (4' x 4' Platform)		9' Overall (4' x 5.5' Platform)		9' Overall (4' x 5.5' Platform)		9' Overall (4' x 5.5' Platform)		9' Overall (4' x 5.5' Platform)		9' Overall (4' x 5.5' Platform)		9' Overall (4' x 5.5' Platform)	
TRAILER FRAME	Rectangular thick wall steel tubing		Rectangular thick wall steel tubing		Rectangular thick wall steel tubing		Rectangular thick wall steel tubing		Rectangular thick wall steel tubing		Rectangular thick wall steel tubing		Rectangular thick wall steel tubing	
AXLE RATING	2000 lbs		2000 lbs		2000 lbs		2000 lbs		2000 lbs		3500 lbs		3500 lbs	
TIRE	12" 6-Ply		12" 6-Ply		12" 6-Ply		12" 6-Ply		12" 6-Ply		13" 6-Ply		13" 6-Ply	
LIGHTING	LED		LED		LED		LED		LED		LED		LED	
TRAILER HITCH BALL SIZE	2" Ball		2" Ball		2" Ball		2" Ball		2" Ball		2" Ball		2" Ball	
WATER TANK SIZE	100 Gal		150 Gal		150 Gal		150 Gal		150 Gal		200 Gal		200 Gal	
HIGH PRESSURE HOSE	3/8" x 50' Steel-braided Monster w/ QC		3/8" x 100' Steel-braided Monster w/ QC		3/8" x 100' Steel-braided Monster w/ QC		3/8" x 100' Steel-braided Monster w/ QC		3/8" x 100' Steel-braided Monster w/ QC		3/8" x 100' Armor Hose™ w/ QC		3/8" x 100' Armor Hose™ w/ QC	
HIGH PRESSURE HOSE REEL	100'		100'		100'		100'		100'		100'		100'	
SUPPLY HOSE	N/A		N/A		N/A		N/A		N/A		3/4" x 75'		3/4" x 75'	
SUPPLY HOSE REEL	N/A		N/A		N/A		N/A		N/A		Standard		Standard	
LIMITED WARRANTY	1yr Frame, 5yr Pump, 3yr Engine		1yr Frame, 5yr Pump, 3yr Engine		1yr Frame, 5yr Pump, 3yr Engine		1yr Frame, 5yr Pump, 3yr Engine		1yr Frame, 5yr Pump, 3yr Engine		1yr Frame, 5yr Pump, 3yr Engine		1yr Frame, 5yr Pump, 3yr Engine	

95004 Comes with external fuel tank. *Battery not included. Requires 12V Garden tractor battery type U1.

LOW OIL SHUTDOWN Indicates engine is equipped with Low Oil Shutdown Technology. See page 42 for details.



PREMIUM PORTABLE & INVERTER GENERATORS



Powershot™ portable and inverter generators by Simpson® are engineered to provide power in even the toughest weather conditions. Reliable and easy to use, Powershot™ portable and inverter generators are ideal for back-up power, tailgate parties, construction sites and or any other outdoor event where and when power is needed most.

PREMIUM GENERATORS

COMMERCIAL SERIES



MODEL NUMBER	SPG3640 <small>LOW OIL SHUTDOWN</small>	SPG3645 <small>LOW OIL SHUTDOWN</small>	SPG5568 <small>LOW OIL SHUTDOWN</small>
PART NUMBER	70062	70005	70006
STARTING WATTS	4500	4500	6875
RUNNING WATTS*	3600	3600	5500
AC VOLTAGE	120V	120V	120/240V
AC FREQUENCY	60 Hz	60 Hz	60 Hz
ENGINE	SIMPSON® OHV	SIMPSON® OHV	SIMPSON® OHV
DISPLACEMENT	224cc	224cc	420cc
VOLTAGE REGULATION	Automatic	Automatic	Automatic
START	Recoil	Recoil	Recoil
FUEL CAPACITY	3.4 gal Gasoline	3.4 gal Gasoline	6.1 gal Gasoline
TIRE/WHEEL	N/A	8" Never-flat	9" Never-flat
DIMENSIONS	27" x 23.1" x 20"	28.7" x 21.6" x 22.8"	31.1" x 21.6" x 23.8"
WEIGHT	101.4 lb	117.94 lb	194 lb
RUN TIME- 50% LOAD	8 Hours	8 Hours	9 Hours
dBA- 25% LOAD @ 7M+	71	72	79
LIMITED WARRANTY**	3yr Residential, 6m Commercial	3yr Residential, 6m Commercial	3yr Residential, 6m Commercial

+Approximate sound levels per ISO 3744, ISO 10884 (Extrapolated to sound pressure @ 7M)

GENERATOR PANEL CONFIGURATIONS*:

SPG3640



SPG3645



SPG5568



SPG7085E



SPG7593E



SPG8310E



PREMIUM GENERATORS

COMMERCIAL SERIES



MODEL NUMBER	SPG7085E <small>LOW OIL SHUTDOWN</small>	SPG7593E <small>LOW OIL SHUTDOWN</small>	SPG8310E <small>LOW OIL SHUTDOWN</small>
PART NUMBER	70010	70007	70008
STARTING WATTS	8500	9375	10000
RUNNING WATTS*	7000	7500	8300
AC VOLTAGE	120/240V	120/240V	120/240V
AC FREQUENCY	60Hz	60 Hz	60 Hz
ENGINE	HONDA® GX390	SIMPSON® OHV	SIMPSON® OHV
DISPLACEMENT	389cc	420cc	439cc
VOLTAGE REGULATION	Automatic	Automatic	Automatic
START	Recoil/E-Start	Recoil/E-Start	Recoil/E-Start
FUEL CAPACITY	6.1 gal Gasoline	6.1 gal Gasoline	6.1 gal Gasoline
TIRE/WHEEL	9" Never-flat	9" Never-flat	9" Never-flat
DIMENSIONS	31.1" x 21.6" x 23.8"	31.1" x 21.6" x 23.8"	31.1" x 21.6" x 23.8"
WEIGHT	191.8 lb	209.4 lb	220 lb
RUN TIME- 50% LOAD	8 Hours	8 Hours	8 Hours
dBA- 25% LOAD @ 7M+	74	76	78
LIMITED WARRANTY**	3yr Residential, 6m Commercial <small>Battery not included. Uses 12V-14AH battery.</small>	3yr Residential, 6m Commercial <small>Battery not included. Uses 12V-14AH battery.</small>	3yr Residential, 6m Commercial <small>Battery not included. Uses 12V-14AH battery.</small>

+Approximate sound levels per ISO 3744, ISO 10884 (Extrapolated to sound pressure @ 7M)

DISCOVER YOUR POWER NEEDS. SIZING YOUR GENERATOR

- 1 Select the devices you wish to run at the same time
- 2 List any starting watts required by your devices
- 3 Add up the running watts of all of your devices
- 4 Add the HIGHEST starting watt listed to the total running watts required by your devices

DEVICE	STARTING WATTS	RUNNING WATTS	RECOMMENDED SIZE
LIGHT BULB	N/A	100	MINIMUM AMOUNT OF STARTING WATTS NEEDED ON YOUR GENERATOR
REFRIGERATOR/FREEZER	2200	700	
CELL PHONE CHARGER	N/A	25	
TOTAL	2200	825	

High altitude carburator kits and USDA Forestry approved spark arresters available, but not included.

*Generator per PGMA (Portable Generator Manufacturers' Association) standard ANSI/PGMA G300-2015, Safety and Performance of Portable Generators.

**See Operator's Manual for complete warranty details.

LOW OIL SHUTDOWN - Indicates engine is equipped with Low Oil Shutdown Technology. See page 42 for details.

PREMIUM GENERATORS

INDUSTRIAL SERIES

LIFTING HOOK

Equipped with a strong steel lifting hook for quick crane lifting and easy job site transfer

EASY ACCESS CONTROL PANEL

Equipped with run time indicator

WELDED WHEEL BARROW LIFTING HANDLE

For stable maneuvering and easy mobility across a variety of terrains

PREMIUM HONDA® ENGINES

Equipped with low oil shutdown to protect engine and extend product life



V-MOUNT VIBRATION ISOLATION SYSTEM
Extends generator life

UL LISTED RECEPTACLES

GFCI outlets standard on all models for use in OSHA safe work environments

WATERPROOF OUTLET COVERS

Provides safety and durable protection for all receptacles

HIGH-QUALITY 100% COPPER-WOUND BRUSHLESS ALTERNATOR

Provides reliable, low THD power that is safe for use on sensitive devices

PREMIUM NEVER-FLAT WHEELS

Provide easy maneuverability across various types of terrain

AUTO IDLE DOWN

Reduces noise and saves fuel

HEAVY-DUTY WELDED STEEL FRAME WITH POWDER COATED FINISH

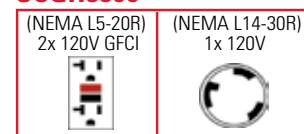
Provides durability and corrosion resistance

MODEL NUMBER	SCGH5500 <small>LOW OIL SHUTDOWN</small>	SCGH8500 <small>LOW OIL SHUTDOWN</small>	SCGH8500E <small>LOW OIL SHUTDOWN</small>
PART NUMBER	70053	70054	70055
STARTING WATTS	5500	8500	8500
RUNNING WATTS*	4500	7000	7000
AC VOLTAGE	120V/240V	120V/240V	120V/240V
AC FREQUENCY	60 Hz	60 Hz	60 Hz
ENGINE	HONDA® GX270	HONDA® GX390	HONDA® GX390
DISPLACEMENT	270cc	389cc	389cc
VOLTAGE REGULATION	Automatic	Automatic	Automatic
START	Recoil	Recoil	Recoil/ E-Start*
FUEL CAPACITY	7.9 gal	7.9 gal	7.9 gal
TIRE/WHEEL	9" Never-flat	9" Never-flat	9" Never-flat
RUN TIME - 50% LOAD	17	12	12
dBA - 25% LOAD @ 7M+	72	74	74
LIMITED WARRANTY**	3yr Commercial	3yr Commercial	3yr Commercial

Please contact a Sales Representative for more details
See page 45 for information.

+Approximate sound levels per ISO 3744, ISO 10884 (Extrapolated to sound pressure @ 7M)

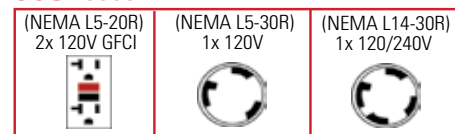
SCGH5500



SCGH8500



SCGH8500E



LOW OIL SHUTDOWN - Indicates engine is equipped with Low Oil Shutdown Technology. See page 42 for details.

Battery not included. Requires 12V-14AH battery.

DEVICE WATTAGES

HEATING & COOLING

DEVICE	STARTING WATTS	RUNNING WATTS
10,000 BTU CENTRAL AC ¹	3000	1500
24,000 BTU CENTRAL AC ¹	4950	3800
1/2 HP FURNACE FAN BLOWER ¹	2300	875
1/3 HP FURNACE FAN BLOWER ¹	1400	700
HEAT PUMP	4500	4700
13 GAL HUMIDIFIER	-	175
SPACE HEATER	-	1800
10,000 BTU WINDOW AC	1800	1200
12,000 BTU WINDOW AC	3950	3250

RESIDENTIAL

DEVICE	STARTING WATTS	RUNNING WATTS
COFFEE MAKER	-	1750
ELECTRIC DRYER	1800	5750
ELECTRIC RANGE	-	1500/ELEMENT
ELECTRIC WATER HEATER	1000	2000
1/2 HP GARAGE DOOR OPENER	2350	500-875
1250 WATT HAIR DRYER	-	1250
100 WATT LIGHT BULB	-	100
1000 WATT MICROWAVE	-	1000
REFRIGERATOR/ FREEZER	2200	700
SECURITY SYSTEM	-	500
1/2 HP SUMP PUMP	2150	800-1050
1/3 HP SUMP PUMP	1300	800
TELEVISION	-	200-500
TOASTER	-	1200-1650
WASHING MACHINE	2300	1150
1/2 HP WELL PUMP	2100	1000
1/3 HP WELL PUMP	1400	750

¹Wattages listed are approximated, always check appliances for actual figures.

High altitude carbtorator kits and USDA Forestry approved spark arreoters available, but not included.

*Generator per PGMA (Portable Generator Manufactures' Association) standard ANSI/PGMA G300-2015, Safety and Performance of Portable Generators.

**See Operator's Manual for complete warranty details.

RECREATIONAL

DEVICE	STARTING WATTS	RUNNING WATTS
AM/ FM RADIO	-	100
BLENDER	450	400
20" BOX FAN	-	200
CD/ DVD PLAYER	-	100
CELLPHONE BATTERY CHARGER	-	25
COLOR TV	-	200-500
ELECTRIC GRILL	-	1650
INFLATER PUMP	150	50
OUTDOOR LIGHT STRING	-	250
13,500 BTU RV AC	700	1500
SLOW COOKER	-	250

LANDSCAPING

DEVICE	STARTING WATTS	RUNNING WATTS
ELECTRIC HEDGE TRIMMER	-	400
ELECTRIC LAWN MOWER	-	1200
9" ELECTRIC LINE TRIMMER	-	350-500
1/2 HP 12" ELEC. CHAIN SAW	-	900-1220

WORK SITE

DEVICE	STARTING WATTS	RUNNING WATTS
1HP AIR COMPRESSOR	4500	2000
1/2 HP AIR COMPRESSOR	2000	1400
1/3 HP AIRLESS PAINT SPRAYER	1200	600
3" BELT SANDER	2400	1200
8" BENCH GRINDER	1100	1400
6 1/2" CIRCULAR SAW	2300	800-1000
1/2" HAND DRILL	900	600
3/8" HAND DRILL	600	400
10" MITER SAW/TABLE SAW	2100	840
QUARTZ HALOGEN WORK LAMP	-	1000
RECIPROCATING SAW	-	960

AMP UP WITH PORTABLE POWER

INVERTER GENERATOR AND PARALLEL BOX ACCESSORY



NOW WITH GFCI PROTECTION!
70061



RV PLUG ADAPTER INCLUDED!
70059



RV PLUG ADAPTER INCLUDED!
70063

MODEL NUMBER	SIG2218	SIG3632	SIG4540
PART NUMBER	70061	70059	70063
STARTING WATTS	2200	3600	4500
RUNNING WATTS*	1800	3200	4000
AC VOLTAGE	120V	120V	120V
AC FREQUENCY	60 Hz	60 Hz	60 Hz
ENGINE	SIMPSON®	SIMPSON®	SIMPSON®
START	Recoil	Recoil / Electric	Recoil / Electric
FUEL CAPACITY	1.2 gal Gasoline	1.5 gal Gasoline	2.4 gal Gasoline
RUN TIME- 25% LOAD	10 Hour	9 Hour	9 Hour
dBA- 25% LOAD @ 7M+	53	67	69
OUTLET TYPE	120V Duplex (5-20R) GFCI 12V DC Automotive	120V (5-30R) 120V Duplex (5-20R) GFCI 12V DC Automotive	120V (TT-30R) RV Outlet 120V Duplex (5-20R) GFCI 12V DC Automotive
LIMITED WARRANTY**	3yr Consumer, 1yr Commercial	3yr Consumer, 1yr Commercial Battery Included	3yr Consumer, 1yr Commercial Battery Included

+Approximate sound levels per ISO 3744, ISO 10884 (Extrapolated to sound pressure @ 7M)

PARALLEL BOX ACCESSORY

MODEL NUMBER	SIG22PK
PART NUMBER	80442
AMPS	30
LIMITED WARRANTY	90 Days

The SIG22PK parallel box includes two sets of power leads and grounding wires for easy connection between two inverter generators rated up to 3300 running watts.

Inverter generators and parallel box sold separately.

High altitude carburator kits available but not included.

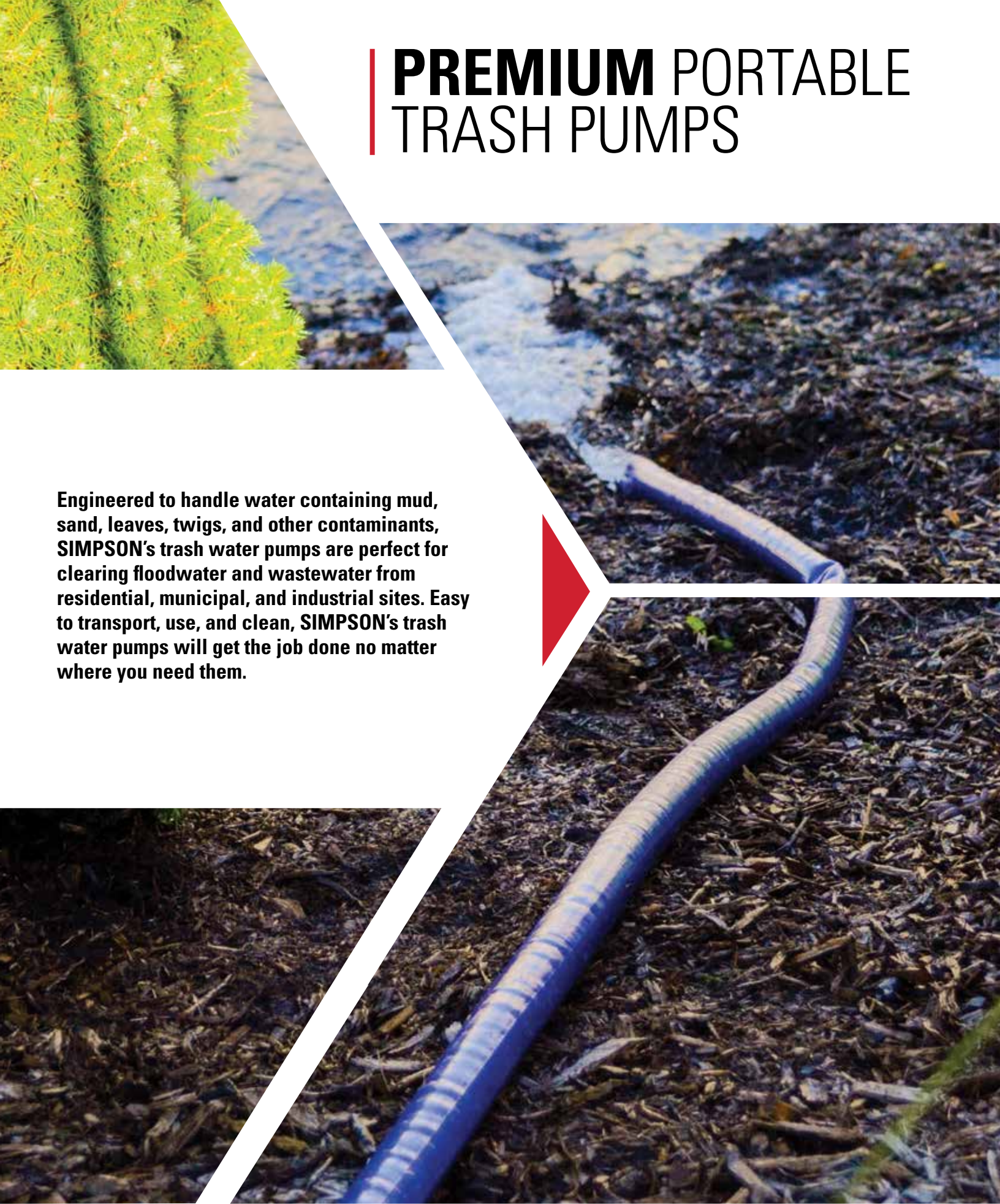
*Generator per PGMA (Portable Generator Manufacturers' Association) standard ANSI/PGMA G300-2015, Safety and Performance of Portable Generators.

**See Operator's Manual for complete warranty details.



PREMIUM PORTABLE TRASH PUMPS

Engineered to handle water containing mud, sand, leaves, twigs, and other contaminants, SIMPSON's trash water pumps are perfect for clearing floodwater and wastewater from residential, municipal, and industrial sites. Easy to transport, use, and clean, SIMPSON's trash water pumps will get the job done no matter where you need them.



PREMIUM PORTABLE TRASH PUMPS

POWERSHOT™ SERIES

GAS POWERED



MODEL NUMBER	S8TP02 <small>LOW OIL SHUTDOWN</small>
PART NUMBER	71002
ENGINE	KOHLER® SH270
START	Recoil
FLOW RATE	158 GPM
INLET/OUTLET DIAMETER	2"
FUEL TANK CAPACITY	2.5 gal
SUCTION HEAD LIFT	25'
TOTAL HEAD LIFT	95'
LIMITED WARRANTY	3yr

MODEL NUMBER	S8TP03 <small>LOW OIL SHUTDOWN</small>
PART NUMBER	71003
ENGINE	HONDA® GX200
START	Recoil
FLOW RATE	285 GPM
INLET/OUTLET DIAMETER	3"
FUEL TANK CAPACITY	2.5 gal
SUCTION HEAD LIFT	25'
TOTAL HEAD LIFT	95'
LIMITED WARRANTY	3yr

FEATURES

PUMP HOUSING MATERIAL = DIE CAST ALUMINUM

MECHANICAL SEAL MATERIAL = SILICON CARBIDE

IMPELLER MATERIAL = CAST IRON

INCLUDES

HOSE CLAMPS (X3)

HOSE BARBS (X2)

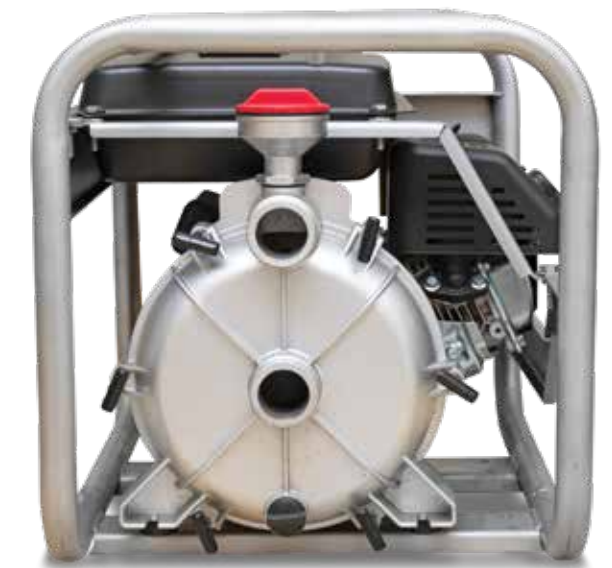
HOSE NUTS (X2)

GASKETS (X2)

STRAINER ATTACHMENT (X1)

STRAINER (X1)

TOOL KIT

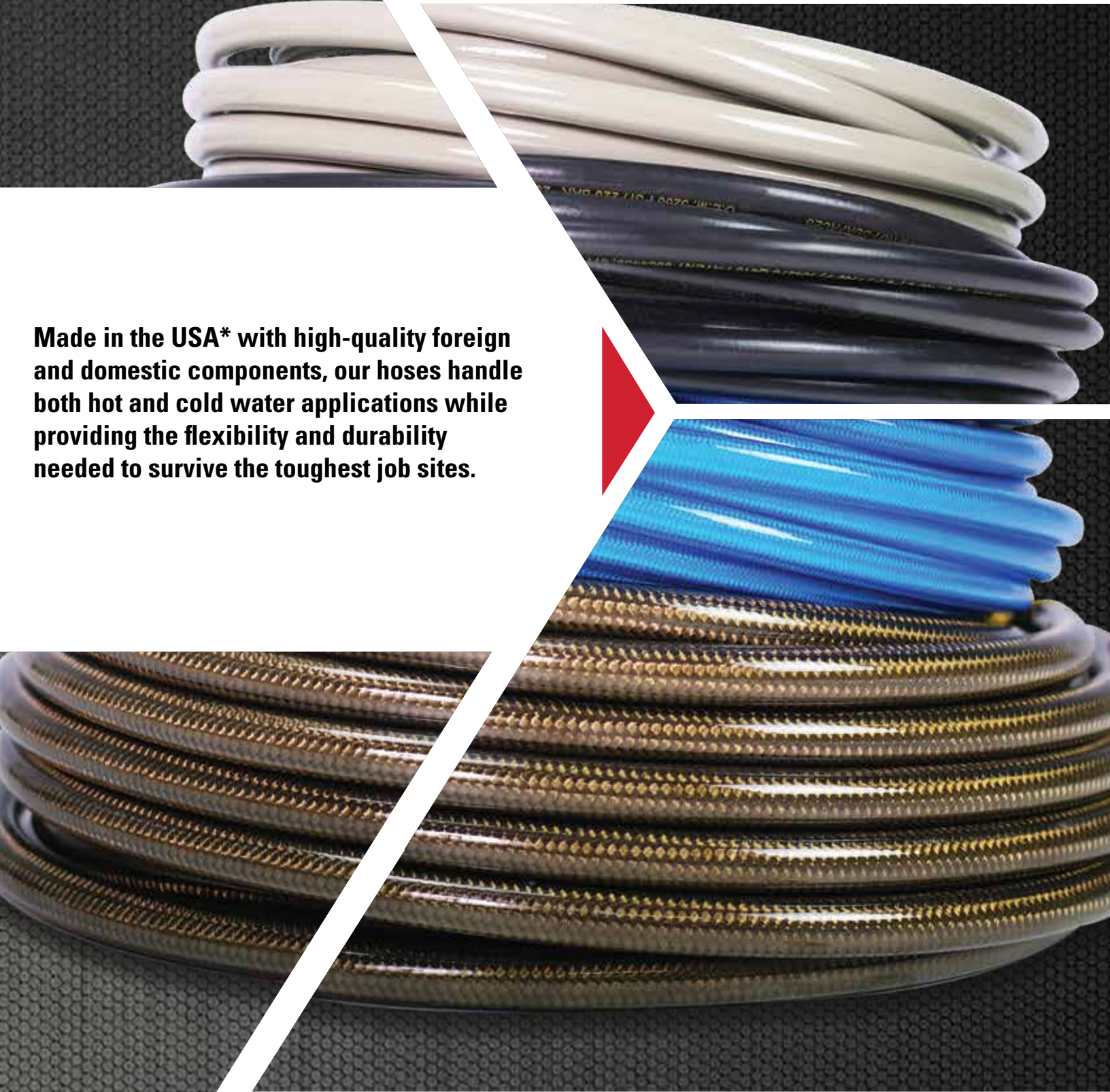


POWERED BY **HONDA** POWERED BY **KOHLER**

LOW OIL SHUTDOWN - Indicates engine is equipped with Low Oil Shutdown Technology. See page 42 for details.

HIGH-PERFORMANCE HOSES

Made in the USA* with high-quality foreign and domestic components, our hoses handle both hot and cold water applications while providing the flexibility and durability needed to survive the toughest job sites.



*Excluding the Wrapped Rubber Hose Series.

HIGH PERFORMANCE HOSES



LIMITED WARRANTY



MORFLEX® HOSE SERIES

SIMPSON's MorFlex technology is used for high flexibility and kink resistance. It has a lightweight polyester braid for easy handling and a polyurethane outer jacket that is non-marring and abrasion-resistant. MorFlex hoses are equipped with threaded M22 connections with a dual o-ring design to fit most gas and electric pressure washers with standard M22 connections. M22 x M22 adapter included.



PART NUMBER	40224 (41107)	40225 (41108)	40226 (41109)
MAX PRESSURE	3300 PSI	3700 PSI	3700 PSI
ID x LENGTH	1/4" x 25'	5/16" x 25'	5/16" x 50'
MAX TEMP	140° F	140° F	140° F
INNER MATERIAL	Polyester	Polyester	Polyester
OUTER MATERIAL	Polyurethane w/ 4" Bend Protectors	Polyurethane w/ 4" Bend Protectors	Polyurethane w/ 4" Bend Protectors
FITTINGS	M22 FNPT x M22 FNPT	M22 FNPT x M22 FNPT	M22 FNPT x M22 FNPT

SANTOPRENE™ HOSE

SIMPSON's Santoprene cold water hose delivers extended hose life. This polyester and steel-braided, abrasion resistant hose is designed to fit most gas and electric pressure washers with standard M22 connections. M22 x M22 adapter included.



PART NUMBER	41182
MAX PRESSURE	4000 PSI
ID x LENGTH	1/4" x 25'
MAX TEMP	140° F
INNER MATERIAL	Polyester & Steel-braided
OUTER MATERIAL	Santoprene w/ 4" Bend Protectors
FITTINGS	M22 FNPT x M22 FNPT

M22 ADAPTER INCLUDED
WITH MORFLEX® & SANTOPRENE™ HOSES
USED TO CONNECT MULTIPLE HOSES WITH STANDARD M22 CONNECTIONS



STEEL-BRAIDED MONSTER HOSE SERIES

SIMPSON's Monster hose series is designed using dual-braided construction of steel over polyester for high durability. The translucent polyurethane outer jacket is non-marring, abrasion resistant, and designed to fit most gas pressure washers with standard quick connect fittings. Its one wipe clean, anti-microbial feature makes it ideal to be used in most any environment.



PART NUMBER	41113	41028 (41071)	41030
MAX PRESSURE	4500 PSI	4500 PSI	4500 PSI
ID x LENGTH	3/8" x 25'	3/8" x 50'	3/8" x 100'
MAX TEMP	140° F	140° F	140° F
INNER MATERIAL	Polyester & Steel-braided	Polyester & Steel-braided	Polyester & Steel-braided
OUTER MATERIAL	Polyurethane w/ 4" Bend Protectors	Polyurethane w/ 4" Bend Protectors	Polyurethane w/ 4" Bend Protectors
FITTINGS	QC Socket & Plug	QC Socket & Plug	QC Socket & Plug

PART NUMBER	41032	41034
MAX PRESSURE	4500 PSI	4500 PSI
ID x LENGTH	3/8" x 150'	3/8" x 200'
MAX TEMP	140° F	140° F
INNER MATERIAL	Polyester & Steel-braided	Polyester & Steel-braided
OUTER MATERIAL	Polyurethane w/ 4" Bend Protectors	Polyurethane w/ 4" Bend Protectors
FITTINGS	QC Socket & Plug	QC Socket & Plug

(Comes in retail packaging)

HIGH PERFORMANCE HOSES



LIMITED WARRANTY **90 DAY ACCESSORY**

ARMOR HOSE™ SERIES

The Armor hot water hose is built for high temperature applications up to 250°F and is designed with dual-braided construction of steel over polyester. The translucent polyurethane outer jacket is non-marring, abrasion resistant, and designed to fit most gas pressure washers with standard quick connect fittings. Its one wipe clean, anti-microbial feature makes it ideal to be used in most any environment.



PART NUMBER	41114 (41095)	41096	41115
MAX PRESSURE	4500 PSI	4500 PSI	4500 PSI
ID x LENGTH	3/8" x 50'	3/8" x 100'	3/8" x 200'
MAX TEMP	250° F	250° F	250° F
INNER MATERIAL	Polyester & Steel-braided	Polyester & Steel-braided	Polyester & Steel-braided
OUTER MATERIAL	Polyurethane w/ 4" Bend Protectors	Polyurethane w/ 4" Bend Protectors	Polyurethane w/ 4" Bend Protectors
FITTINGS	QC Socket & Plug	QC Socket & Plug	QC Socket & Plug

WRAPPED RUBBER HOSE SERIES

SIMPSON's wrapped rubber hose series features dual-braided construction of steel over polyester and is jacketed with wrapped rubber for high strength, durability and kink resistance. These hoses provide exceptional performance in high temperature applications up to 250°F and pressure ratings from 4,500 to 10,000 PSI.



PART NUMBER	41183	41184	41185
MAX PRESSURE	4500 PSI	8000 PSI	8000 PSI
ID x LENGTH	3/8" x 50'	3/8" x 50'	3/8" x 100'
MAX TEMP	250° F	250° F	250° F
INNER MATERIAL	R1 Steel-braided	R2 Steel-braided	R2 Steel-braided
OUTER MATERIAL	Wrapped Rubber w/ 6" Bend Protectors	Wrapped Rubber w/ 24" Bend Protectors	Wrapped Rubber w/ 24" Bend Protectors
FITTINGS	Steel QC w/ Plug	Stainless Steel QC w/ Plug	Stainless Steel QC w/ Plug

PART NUMBER	41186	41187	41188	41189
MAX PRESSURE	8000 PSI	10,000 PSI	10,000 PSI	10,000 PSI
ID x LENGTH	3/8" x 200'	3/8" x 50'	3/8" x 100'	3/8" x 200'
MAX TEMP	250° F	250° F	250° F	250° F
INNER MATERIAL	R2 Steel-braided	R2 Steel-braided	R2 Steel-braided	R2 Steel-braided
OUTER MATERIAL	Wrapped Rubber w/ 24" Bend Protectors	Wrapped Rubber w/ 24" Bend Protectors	Wrapped Rubber w/ 24" Bend Protectors	Wrapped Rubber w/ 24" Bend Protectors
FITTINGS	Stainless Steel QC w/ Plug	Stainless Steel QC w/ Plug	Stainless Steel QC w/ Plug	Stainless Steel QC w/ Plug

PART NUMBER	41190	41191	41192
MAX PRESSURE	10,000 PSI	10,000 PSI	10,000 PSI
ID x LENGTH	1/2" x 50'	1/2" x 100'	1/2" x 200'
MAX TEMP	250° F	250° F	250° F
INNER MATERIAL	R2 Steel-braided	R2 Steel-braided	R2 Steel-braided
OUTER MATERIAL	Wrapped Rubber w/ 24" Bend Protectors	Wrapped Rubber w/ 24" Bend Protectors	Wrapped Rubber w/ 24" Bend Protectors
FITTINGS	Stainless Steel QC w/ Plug	Stainless Steel QC w/ Plug	Stainless Steel QC w/ Plug

HIGH PERFORMANCE HOSES



LIMITED WARRANTY **90 DAY ACCESSORY**

JETXTREME™ JETTER HOSE SERIES

SIMPSON's Jetxtreme hose series is packed with performance for the toughest of jobs. This hose is constructed with a polyester braided inner tube and a polyurethane, anti-microbial outer jacket that provides added strength and durability. It's one wipe clean feature allows for quick clean up and storage from your jobsite. Designed to handle your hot water jetting needs up to 250°F, the Jetxtreme hose series offers a wide range of PSI performances.



PART NUMBER	30120	30121	30122
MAX PRESSURE	4000 PSI	4000 PSI	4000 PSI
ID x LENGTH	3/8" x 50'	3/8" x 75'	3/8" x 100'
MAX TEMP	250° F	250° F	250° F
INNER MATERIAL	Polyester braided	Polyester braided	Polyester braided
OUTER MATERIAL	Polyurethane	Polyurethane	Polyurethane
FITTINGS	Solid MNPT x Solid MNPT	Solid MNPT x Solid MNPT	Solid MNPT x Solid MNPT

PART NUMBER	30123	30124	30125	30170
MAX PRESSURE	4000 PSI	4000 PSI	4000 PSI	3000 PSI
ID x LENGTH	3/8" x 150'	3/8" x 200'	3/8" x 300'	1/4" x 25'
MAX TEMP	250° F	250° F	250° F	250° F
INNER MATERIAL	Polyester braided	Polyester braided	Polyester braided	Polyester braided
OUTER MATERIAL	Polyurethane	Polyurethane	Polyurethane	Polyurethane
FITTINGS	Solid MNPT x Solid MNPT	Solid MNPT x Solid MNPT	Solid MNPT x Solid MNPT	Solid MNPT x Solid MNPT

PART NUMBER	30171	30172	30173	30174
MAX PRESSURE	3000 PSI	3000 PSI	3000 PSI	3000 PSI
ID x LENGTH	1/4" x 50'	1/4" x 100'	1/4" x 150'	1/4" x 200'
MAX TEMP	250° F	250° F	250° F	250° F
INNER MATERIAL	Polyester braided	Polyester braided	Polyester braided	Polyester braided
OUTER MATERIAL	Polyurethane	Polyurethane	Polyurethane	Polyurethane
FITTINGS	Solid MNPT x Solid MNPT	Solid MNPT x Solid MNPT	Solid MNPT x Solid MNPT	Solid MNPT x Solid MNPT

PART NUMBER	30175	30176	30200	30201
MAX PRESSURE	3000 PSI	3000 PSI	4000 PSI	4000 PSI
ID x LENGTH	1/4" x 250'	1/4" x 300'	1/2" x 50'	1/2" x 75'
MAX TEMP	250° F	250° F	250° F	250° F
INNER MATERIAL	Polyester braided	Polyester braided	Polyester braided	Polyester braided
OUTER MATERIAL	Polyurethane	Polyurethane	Polyurethane	Polyurethane
FITTINGS	Solid MNPT x Solid MNPT	Solid MNPT x Solid MNPT	Solid MNPT x Solid MNPT	Solid MNPT x Solid MNPT

PART NUMBER	30202	30203	30204	30205
MAX PRESSURE	4000 PSI	4000 PSI	4000 PSI	4000 PSI
ID x LENGTH	1/2" x 100'	1/2" x 150'	1/2" x 200'	1/2" x 5'
MAX TEMP	250° F	250° F	250° F	250° F
INNER MATERIAL	Polyester braided	Polyester braided	Polyester braided	Polyester braided
OUTER MATERIAL	Polyurethane	Polyurethane	Polyurethane	Polyurethane
FITTINGS	Solid MNPT x Solid MNPT	Solid MNPT x Solid MNPT	Solid MNPT x Solid MNPT	Solid MNPT x Solid MNPT

PART NUMBER	30206
MAX PRESSURE	4000 PSI
ID x LENGTH	1/2" x 400'
MAX TEMP	250° F
INNER MATERIAL	Polyester braided
OUTER MATERIAL	Polyurethane
FITTINGS	Solid MNPT x Solid MNPT

(Comes in retail packaging)

HIGH PERFORMANCE HOSES



CARPET HOSE SERIES



LIMITED WARRANTY



SIMPSON's carpet cleaning solution hoses are ideal for many commercial cleaning applications. These solution hoses are built with a non-marring bonded jacket and a seamless heat resistant inner tube. Also included are 4-inch bend protectors to prevent harmful twists and breaks during cleaning. This heavy duty hose is flexible, lightweight, and is rated up to 3000 PSI.



PART NUMBER	30210	30211	30213
MAX PRESSURE	3000 PSI	3000 PSI	3000 PSI
ID x LENGTH	3/8" x 25'	3/8" x 50'	3/8" x 100'
MAX TEMP	250° F	250° F	250° F
INNER MATERIAL	Polyester braided	Polyester braided	Polyester braided
OUTER MATERIAL	Polyurethane	Polyurethane	Polyurethane
FITTINGS	SS Solid MNPT x SS Solid MNPT	SS Solid MNPT x SS Solid MNPT	SS Solid MNPT x SS Solid MNPT

PART NUMBER	30214	30215	30218	30219
MAX PRESSURE	3000 PSI	3000 PSI	3000 PSI	3000 PSI
ID x LENGTH	3/8" x 150'	3/8" x 200'	3/8" x 40'	3/8" x 24"
MAX TEMP	250° F	250° F	250° F	250° F
INNER MATERIAL	Polyester braided	Polyester braided	Polyester braided	Polyester braided
OUTER MATERIAL	Polyurethane	Polyurethane	Polyurethane	Polyurethane
FITTINGS	SS Solid MNPT x SS Solid MNPT	SS Solid MNPT x SS Solid MNPT	SS Solid MNPT x SS Solid MNPT	SS Solid MNPT x SS Solid MNPT

PART NUMBER	30140	30141	30142	30143
MAX PRESSURE	3000 PSI	3000 PSI	3000 PSI	3000 PSI
ID x LENGTH	1/4" x 25'	1/4" x 50'	1/4" x 100'	1/4" x 150'
MAX TEMP	250° F	250° F	250° F	250° F
INNER MATERIAL	Polyester braided	Polyester braided	Polyester braided	Polyester braided
OUTER MATERIAL	Polyurethane	Polyurethane	Polyurethane	Polyurethane
FITTINGS	SS Solid MNPT x SS Solid MNPT	SS Solid MNPT x SS Solid MNPT	SS Solid MNPT x SS Solid MNPT	SS Solid MNPT x SS Solid MNPT

PART NUMBER	30144	30145	30146	30155
MAX PRESSURE	3000 PSI	3000 PSI	3000 PSI	3000 PSI
ID x LENGTH	1/4" x 200'	1/4" x 250'	1/4" x 300'	1/4" x 12"
MAX TEMP	250° F	250° F	250° F	250° F
INNER MATERIAL	Polyester braided	Polyester braided	Polyester braided	Polyester braided
OUTER MATERIAL	Polyurethane	Polyurethane	Polyurethane	Polyurethane
FITTINGS	SS Solid MNPT x SS Solid MNPT	SS Heavy-duty MNPT x SS Heavy-duty MNPT	SS Heavy-duty MNPT x SS Heavy-duty MNPT	Steel Solid 1/4" MNPT x Steel Solid 1/4" MNPT

PART NUMBER	30156	30157	30258	30259
MAX PRESSURE	3000 PSI	3000 PSI	3000 PSI	3000 PSI
ID x LENGTH	1/4" x 15"	1/4" x 18"	3/8" x 12"	3/8" x 15"
MAX TEMP	250° F	250° F	250° F	250° F
INNER MATERIAL	Polyester braided	Polyester braided	Polyester braided	Polyester braided
OUTER MATERIAL	Polyurethane	Polyurethane	Polyurethane	Polyurethane
FITTINGS	Steel Heavy-duty 1/4" MNPT x Steel Heavy-duty 1/4" MNPT	Steel Heavy-duty 1/4" MNPT x Steel Heavy-duty 1/4" MNPT	SS Solid MNPT x SS Solid MNPT	SS Solid MNPT x SS Solid MNPT

PART NUMBER	30260	30161	30177	30178
MAX PRESSURE	3000 PSI	3000 PSI	3000 PSI	3000 PSI
ID x LENGTH	3/8" x 18"	1/4" x 13"	1/4" x 12"	1/4" x 15"
MAX TEMP	250° F	250° F	250° F	250° F
INNER MATERIAL	Polyester braided	Polyester braided	Polyester braided	Polyester braided
OUTER MATERIAL	Polyurethane	Polyurethane	Polyurethane	Polyurethane
FITTINGS	SS Solid MNPT x SS Solid MNPT	SS Solid MNPT x SS Solid MNPT	SS Heavy-duty 3/8" MNPT x SS Heavy-duty 3/8" MNPT	SS Heavy-duty 3/8" MNPT x SS Heavy-duty 3/8" MNPT

PART NUMBER	30179	30207
MAX PRESSURE	3000 PSI	3000 PSI
ID x LENGTH	1/4" x 18"	1/4" x 75'
MAX TEMP	250° F	250° F
INNER MATERIAL	Polyester braided	Polyester braided
OUTER MATERIAL	Polyurethane	Polyurethane
FITTINGS	SS Heavy-duty 3/8" MNPT x SS Heavy-duty 3/8" MNPT	SS Heavy-duty 3/8" MNPT x SS Heavy-duty 3/8" MNPT

VITAL OXIDE

PROFESSIONAL GRADE CLEANING

Vital Oxide is an EPA registered hospital disinfectant cleaner, mold killer and super effective odor eliminator. Ready to use with no mixing required, just spray, wipe or fog right from the bottle. Non-irritating to the skin and non-corrosive to treated articles.

VITAL OXIDE IN ACTION:

- **Used in emergency response to eliminate Norovirus out-breaks.**
- **Clinical trials have shown a decrease of 95% in Health-care Associated Infections (HAI'S) of Acinetobacter spp in hospital environment.**
- **Used in disaster response to eliminate mold and mildew from flood damage.**
- **University and government sponsored studies document long-term effectiveness on mold and mold spores, even eliminating mold spores.**

MODEL NUMBER	CONTENTS AMOUNT
82245	5 GALLON PAIL
82246*	15 GALLON DRUM
82247*	55 GALLON DRUM
82248*	261 GALLON TOTE



*Shipping times vary due to availability. Contact your sales rep for more information

CLEANING DETERGENT

PROFESSIONAL GRADE CLEANING

SIMPSON® pressure washer cleaners are specifically formulated to enhance your pressure washer's performance. Featuring different formulas, multi- purpose, heavy-duty, and biodegradable, SIMPSON® cleaners will help cut through tough grease, power away stains, and easily remove mold and mildew on the jobsite and at home.

FOR USE ON MULTIPLE SURFACES:

- **DECK, FENCE & PATIO**
- **BRICK, SIDING & CONCRETE**
- **CARS, TRUCKS, BIKES & RVs**
- **OUTDOOR FURNITURE**



MULTI-PURPOSE



HEAVY-DUTY



NATURAL GREEN FORMULA

PART NUMBER	88289 (88281)	88290 (88282)	88291 (88283)
CONTENT AMOUNT	1 Gallon	1 Gallon	1 Gallon

PREMIUM ACCESSORIES

SIMPSON® offers a wide variety of premium pressure washer accessories to enhance your cleaning experience. Many accessories are designed to fit most pressure washers, providing more cleaning options for the homeowner and professional to keep you cleaning effectively and efficiently.



PREMIUM ACCESSORIES

LIMITED WARRANTY **90 DAY** ACCESSORY

GUNS & LANCES

FRONT LOAD SPRAY GUN

PART NUMBER	80147
MAX PRESSURE	3400 PSI
MAX GPM	8.0 GPM
MAX TEMP	140° F
INLET - HOSE CONNECT	M22 Male
OUTLET - LANCE CONNECT	M22 Female



360° SWIVEL SIDE ASSIST SPRAY GUN

PART NUMBER	80148
MAX PRESSURE	4500 PSI
MAX GPM	6.6 GPM
MAX TEMP	140° F
INLET - HOSE CONNECT	M22 Male w/ 3/8" Female QC plug adapter
OUTLET - LANCE CONNECT	M22 Female



HOT WATER SPRAY GUN

PART NUMBER	80178
MAX PRESSURE	5075 PSI
MAX GPM	12.0 GPM
MAX TEMP	212° F
INLET - HOSE CONNECT	3/8" FNPT with adapters*
OUTLET - LANCE CONNECT	1/4" FNPT



*INCLUDES BONUS ADAPTERS
QTY 1: 3/8" MNPT x M22 Male
QTY 1: 3/8" MNPT x QC Plug

DIAL-N-WASH® ADJUSTABLE PRESSURE REGULATOR

PART NUMBER	82232
MAX PRESSURE	4500 PSI
MAX GPM	4.0 GPM
MAX TEMP	140° F
INLET - LANCE CONNECT	M22 Female
OUTLET - GUN CONNECT	M22 Male



16" SPRAY LANCE

PART NUMBER	80149
MAX PRESSURE	3600 PSI
MAX GPM	N/A
MAX TEMP	140° F
INLET - GUN CONNECT	M22 Male
OUTLET - NOZZLE CONNECT	1/4" QC Coupler



31" SPRAY LANCE

PART NUMBER	80479
MAX PRESSURE	4500 PSI
MAX GPM	N/A
MAX TEMP	140° F
INLET - GUN CONNECT	M22 Male
OUTLET - NOZZLE CONNECT	1/4" QC Coupler



48" INSULATED LANCE

PART NUMBER	80179
MAX PRESSURE	5000 PSI
MAX GPM	N/A
MAX TEMP	212° F
INLET - GUN CONNECT	1/4" MNPT
OUTLET - NOZZLE CONNECT	1/4" QC Coupler



O-RING & FILTER KIT



PART NUMBER	80151
TWO FILTERS	One Size
TWO O-RING SETS	Five Sizes

DID YOU KNOW?

- You should always replace any worn or broken nozzles as they can potentially be a safety hazard.
- You should always use accessories that are within your pressure washer's PSI range. Always refer to your product user manual for additional details.



NOZZLES

SET OF 5 SPRAY NOZZLES: 0°, 15°, 25°, 40° AND SOAP



PART NUMBER	80145	80146
MAX PRESSURE	3600 PSI	4500 PSI
MAX TEMP	212° F	212° F
NOZZLE SIZE	3.0, SOAP	4.0, SOAP
LANCE CONNECT	1/4" QC Plug	1/4" QC Plug

SET OF 2 SECOND STORY NOZZLES: WASH AND SOAP



PART NUMBER	80177
MAX PRESSURE	5000 PSI
MAX TEMP	212° F
NOZZLE SIZE	10.0, 40.0
LANCE CONNECT	1/4" QC Plug

5-N-1 SPRAY NOZZLE: 0°, 15°, 25°, 40° AND SOAP



PART NUMBER	80142
MAX PRESSURE	3600 PSI
MAX TEMP	140° F
NOZZLE SIZE	2.8 - 3.2, SOAP
LANCE CONNECT	1/4" QC Plug

PREMIUM ACCESSORIES (CONT.)

OSCILLATING TURBO NOZZLES

LIMITED WARRANTY **90 DAY** ACCESSORY



PART NUMBER	80143	80144	80355	80356	80357	80358
MAX PRESSURE	3600	4500	5500	5500	5500	5500
MAX TEMP	212° F	212° F	212° F	212° F	212° F	212° F
NOZZLE SIZE	3.0	4.0	5.0	6.0	7.0	8.0
LANCE CONNECT	1/4" QC Plug	1/4" QC Plug	1/4" QC Plug	1/4" QC Plug	1/4" QC Plug	1/4" QC Plug

HOSE REELS



HOSE REELS

PART NUMBER	80399	80490	80403	80401
MAX PRESSURE	5000 PSI	5000 PSI	5000 PSI	5000 PSI
MAX TEMP	212° F	212° F	212° F	212° F
HOSE CAPACITY	100' x 3/8"	100' x 3/8" or 125' x 1/4"	200' x 3/8"	100' x 3/8" or 125' x 1/4"
MATERIAL	Heavy-duty Steel Construction	Heavy-duty Steel Construction	Heavy-duty Steel Construction	Heavy-duty Steel Construction

*Does not have Hose Reel Guide

SURFACE CLEANERS

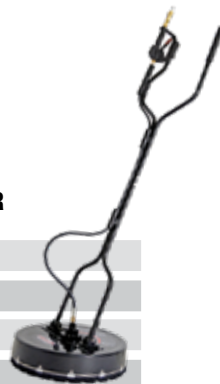
15" SURFACE CLEANER

PART NUMBER	80165
MAX PRESSURE	3700 PSI
MAX TEMP	140° F
LANCE CONNECT	1/4" Plug
MATERIAL	Powder Coated Steel Construction



20" COMMERCIAL SURFACE CLEANER

PART NUMBER	80182
MAX PRESSURE	4500 PSI
MAX TEMP	212° F
LANCE CONNECT	3/8" Plug
MATERIAL	Heavy-duty ABS
FILTER	High Pressure Inlet



PUMP CARE

PUMP GUARD

PART NUMBER	80130
CONTENT AMOUNT	12oz



PUMP GUARD- AEROSOL

PART NUMBER	88266
CONTENT AMOUNT	4oz



15W40 PUMP OIL

PART NUMBER	80138
CONTENT AMOUNT	16oz

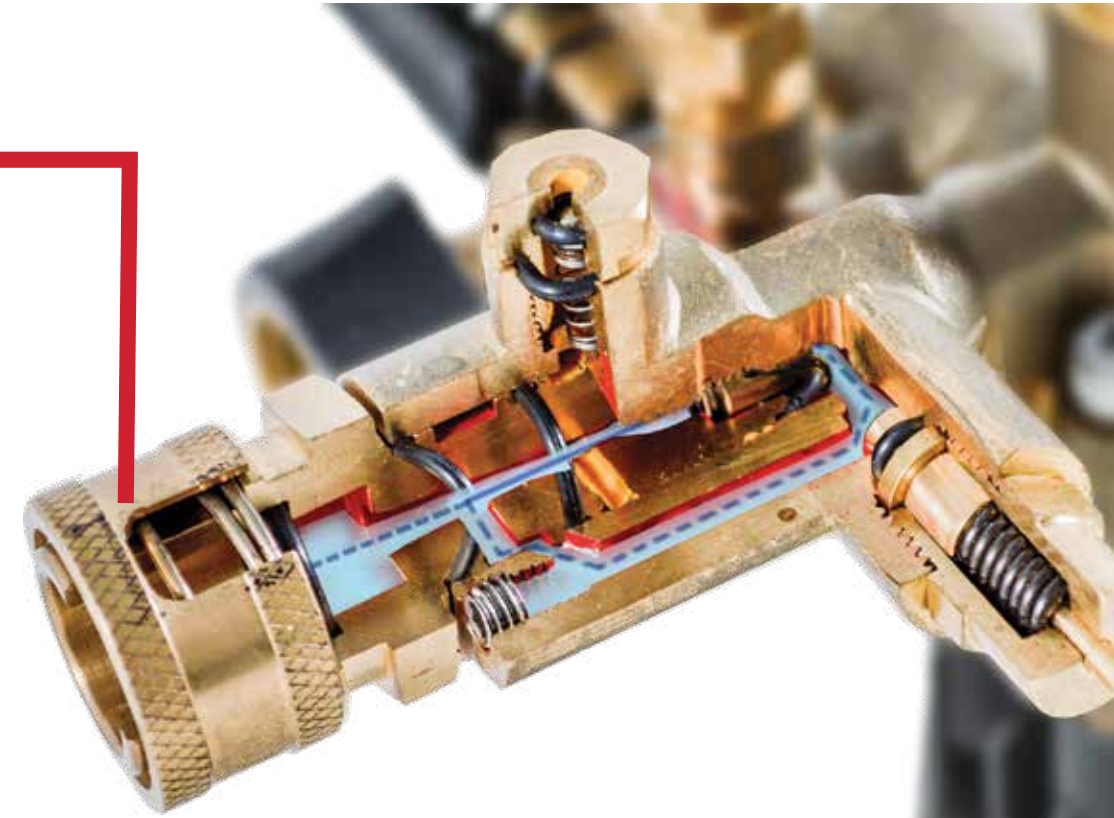


POWER BOOST

ADVANCED PUMP TECHNOLOGY

With PowerBoost® technology, high water pressure levels trigger a bypass around the venturi nozzle, where chemical suction takes place, reducing pressure loss. Pumps with PowerBoost deliver higher pressure at the nozzle for improved impact and cleaning performance.

- HIGHER PRESSURE AT THE NOZZLE
- GREATER IMPACT AND CLEANING PERFORMANCE



LOW OIL SHUTDOWN

The Low Oil Shutdown (LOS) feature helps to prevent engine damage due to a low oil condition. LOS is an oil level sensor inside the engine crankcase. When the engine oil reaches a level that is too low for proper operation, the LOS will automatically stop the engine, indicating the oil needs to be refilled.

PREMIUM PUMPS

All Pump Kits come fully plumbed. Includes:

- Pump
- Mounting hardware (Nuts & Bolts)
- Siphon hose with filter
- Shaft key
- Instruction booklet

OEM TECHNOLOGIES™ AXIAL CAM PUMP KITS



Vertical Pump Kit Materials



PART NUMBER	90025	VERTICAL	90026	VERTICAL	90027	VERTICAL
MAX PRESSURE	2400 PSI		3000 PSI		3300 PSI	
MAX GPM	2.0 GPM		2.5 GPM		2.4 GPM	
MANIFOLD	Clear Anodized Aluminum Manifold		Clear Anodized Aluminum Manifold		Brass Manifold	
UNLOADER	Integrated w/ Easy Start Unloader		Integrated w/ Easy Start Unloader		Integrated w/ Easy Start Unloader	
SHAFT SIZE	7/8" Shaft		7/8" Shaft		7/8" Shaft	
THREADING	Garden Hose Inlet/ M22 Outlet		Garden Hose Inlet/ M22 Outlet		Garden Hose Inlet/ M22 Outlet	
LIMITED WARRANTY	1yr		1yr		1yr	



Horizontal Pump Kit Materials



PART NUMBER	90028	HORIZONTAL	90029	HORIZONTAL
MAX PRESSURE	3000 PSI		3300 PSI	
MAX GPM	2.4 GPM		2.4 GPM	
MANIFOLD	Clear Anodized Aluminum Manifold		Brass Manifold	
UNLOADER	Integrated w/ Easy Start Unloader		Integrated w/ Easy Start Unloader	
SHAFT SIZE	3/4" Shaft		3/4" Shaft	
THREADING	Garden Hose Inlet/ M22 Outlet		Garden Hose Inlet/ M22 Outlet	
LIMITED WARRANTY	2yr		2yr	

AAA™ PUMP KITS



AAA™ Triplex Pump Kit Materials



PART NUMBER	90038	C42 TRIPLEX	90039	C42 TRIPLEX	90034	C42 TRIPLEX
MAX PRESSURE	3800 PSI		4000 PSI		4400 PSI	
MAX GPM	3.5 GPM		3.5 GPM		4.0 GPM	
MANIFOLD	Brass Manifold		Brass Manifold		Brass Manifold	
UNLOADER	Integrated & Adjustable w/ Easy Start Unloader		Integrated & Adjustable w/ Easy Start Unloader		Integrated & Adjustable w/ Easy Start Unloader	
SHAFT SIZE	1" Shaft		1" Shaft		1" Shaft	
THREADING	Garden Hose Inlet/ QC Outlet		Garden Hose Inlet/ QC Outlet		Garden Hose Inlet/ QC Outlet	
LIMITED WARRANTY	5yr		5yr		5yr	

PREMIUM PUMPS (CONT.)

AAA™ PUMP KITS



Pump Kit Materials



AX300 AXIAL CAM **POWER BOOST**

PART NUMBER	90052
MAX PRESSURE	3500 PSI
MAX GPM	2.5 GPM
MANIFOLD	Brass Manifold
UNLOADER	Integrated & Adjustable w/ Easy Start Unloader
SHAFT SIZE	3/4" Shaft
THREADING	Garden Hose Inlet/ M22 Outlet
LIMITED WARRANTY	3yr



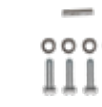
C32 TRIPLEX **POWER BOOST**

PART NUMBER	90036
MAX PRESSURE	3200 PSI
MAX GPM	2.8 GPM
MANIFOLD	Brass Manifold
UNLOADER	Integrated & Adjustable w/ Easy Start Unloader
SHAFT SIZE	3/4" Shaft
THREADING	Garden Hose Inlet/ M22 Outlet
LIMITED WARRANTY	5yr



C32 TRIPLEX **POWER BOOST**

PART NUMBER	90037
MAX PRESSURE	3700 PSI
MAX GPM	2.5 GPM
MANIFOLD	Brass Manifold
UNLOADER	Integrated & Adjustable w/ Easy Start Unloader
SHAFT SIZE	3/4" Shaft
THREADING	Garden Hose Inlet/ M22 Outlet
LIMITED WARRANTY	5yr



Pump Kit Materials



C3X TRIPLEX

PART NUMBER	90058
MAX PRESSURE	3000 PSI
MAX GPM	3.0 GPM
MANIFOLD	Brass Manifold
UNLOADER	Remote Unloader with Bypass Hose
SHAFT SIZE	3/4" Shaft
THREADING	Garden Hose Inlet/ QC Outlet
LIMITED WARRANTY	5yr



C4X TRIPLEX

PART NUMBER	90057
MAX PRESSURE	3500 PSI
MAX GPM	4.0 GPM
MANIFOLD	Brass Manifold
UNLOADER	Remote Unloader with Bypass Hose
SHAFT SIZE	1" Shaft
THREADING	Garden Hose Inlet/ QC Outlet
LIMITED WARRANTY	5yr



C4X TRIPLEX

PART NUMBER	90056
MAX PRESSURE	4400 PSI
MAX GPM	4.0 GPM
MANIFOLD	Brass Manifold
UNLOADER	Remote Unloader with Bypass Hose
SHAFT SIZE	1" Shaft
THREADING	Garden Hose Inlet/ QC Outlet
LIMITED WARRANTY	5yr

AAA™ PUMP UNLOADERS



PART NUMBER	80362
MAX PRESSURE	3600 PSI
MAX GPM	12 GPM
MATERIAL	Brass Construction
THREADING	3/8" FTP Inlet/ QC Outlet
MAX TEMP	212° F



PART NUMBER	80361
MAX PRESSURE	4500 PSI
MAX GPM	12 GPM
MATERIAL	Brass Construction
THREADING	3/8" FTP Inlet/ QC Outlet
MAX TEMP	212° F



PART NUMBER	80404
MAX PRESSURE	5500 PSI
MAX GPM	12 GPM
MATERIAL	Brass Construction
THREADING	3/8" FTP Inlet/ QC Outlet
MAX TEMP	212° F



PART NUMBER	80405
MAX PRESSURE	6500 PSI
MAX GPM	12 GPM
MATERIAL	Stainless Steel Construction
THREADING	3/8" FTP Inlet/ QC Outlet
MAX TEMP	212° F



PART NUMBER	80364	BANJO UNLOADER
MAX PRESSURE	3600 PSI	
MAX GPM	12 GPM	
MATERIAL	Brass Construction	
THREADING	3/8" FTP Inlet/ QC Outlet	
MAX TEMP	212° F	



PART NUMBER	80363	BANJO UNLOADER
MAX PRESSURE	4500 PSI	
MAX GPM	12 GPM	
MATERIAL	Brass Construction	
THREADING	3/8" FTP Inlet/ QC Outlet	
MAX TEMP	212° F	

INTERESTED IN BECOMING A **SIMPSON® DEALER?**

Partner with a vertically integrated manufacturer of outdoor power equipment as a SIMPSON® dealer and enjoy the following benefits:

- 1** Dedicated Account Representative to help grow your **SIMPSON** business
- 2** Access to exclusive sales promotions
- 3** Invitations to exclusive **DEALER ONLY** trade shows and events
- 4** View our full library of literature including promotional sales materials
- 5** Become your own service center and increase your business



CETA CPC-100 CERTIFIED **TESTING STANDARDS**

Why choose a CETA Certified product?



- ✓ PROFESSIONAL MEMBER BASE:**
CETA has a membership base of over 200 entities from four different countries representing manufacturers, dealers, service providers, customers/end-users and associates.
- ✓ TOP INDUSTRY RATINGS:**
CETA only allows for products to operate within and no less than 90% of the product rating. This accounts for normal variances within the manufacturing process.
- ✓ PRECISE TESTING STANDARDS:**
CETA certified products are rated based on performance recorded using the **same** nozzle as opposed to utilizing skewed data from different nozzle sizes.
- ✓ CERTIFIED PERFORMANCE:**
The CETA standard provides the end-user with a pressure washer that is certified to perform as intended with any nozzle provided as OEM equipment.

THANK YOU FOR **CHOOSING SIMPSON®**



Learn more about pressure washers we have.