

## **ATTENTION!**

Read all safety rules carefully before attempting to operate. Retain for future reference.

## **DANGER!**

Never operate this unit when flammable materials or vapors are present because electrical devices produce arcs or sparks that can cause a fire or explosion.

**NEVER OPERATE  
UNATTENDED!**

User manual. Please review before operating vac.



# shop·vac<sup>®</sup>

BRAND

## Shop Vac<sup>®</sup> Wet/Dry Vacuums

**SERIES 586, 587, 610, 850, 925, 950, 962, 965, 970, 984, 991**  
**Commercial/Industrial Use**

### **Description**

The Shop-Vac<sup>®</sup> Wet/Dry vacuum cleaners are for vacuuming wet and dry non-volatile materials. Equipped with powerful, permanently lubricated, Single or Two-Stage By-Pass motors. Standard filtration systems to handle dry or wet pick-up. Double filtration is available for most Shop-Vac<sup>®</sup> Vacs and is standard on Shop-Vac<sup>®</sup> Commercial Vacuums. Equipped with heavy duty dolly or easy roll caster system. Automatic float shut off prevents overflow during wet pick-up. Includes versatile 1-1/4" (3.18cm), 1-1/2" (3.81cm) or 2-1/2" (6.35cm) diameter accessories. Tank styles include steel with rust resistant epoxy phenolic coated interiors, durable stainless steel and rugged dent resistant polypropylene tank. UL listed.

# IMPORTANT SAFETY INSTRUCTIONS

When using an electrical appliance, basic precautions should always be followed, including the following: **READ ALL INSTRUCTIONS BEFORE USING THIS APPLIANCE.**

## **WARNING** – TO REDUCE THE RISK OF FIRE, ELECTRIC SHOCK OR INJURY:

1. Do not leave appliance when plugged in. Unplug from outlet when not in use and before servicing. Connect to a properly grounded outlet only. See Grounding Instructions.
2. Do not expose to rain – store indoors.
3. Do not allow to be used as a toy. Close attention is necessary when used by or near children.
4. Use only as described in this manual. Use only Manufacturer's recommended attachments.
5. Do not use with damaged cord or plug. If appliance is not working as it should, has been dropped, damaged, left outdoors or dropped into water, contact Shop-Vac Corporation for assistance.
6. Do Not: pull or carry by cord, use cord as a handle, close a door on cord or pull cord around sharp edges or corners. Do not run appliance over cord. Keep cord away from heated surfaces.
7. Do not unplug by pulling on cord. To unplug, grasp the plug; not the cord.
8. Do not handle plug or appliance with wet hands.
9. Do not put any object into openings. Do not use with any openings blocked; keep free of dust, lint, hair and anything that may reduce air flow.
10. Keep hair, loose clothing, fingers and all parts of body away from openings and moving parts.
11. Do not pick up anything that is burning or smoking, such as cigarettes, matches or hot ashes.

12. Do not use without dust bag and/or filters in place.
13. Turn off all controls before unplugging.
14. Use extra care when cleaning on stairs.
15. Do not use to pick up flammable or combustible liquids such as gasoline or use in areas where they may be present.
16. Do not use your cleaner as a sprayer of flammable liquids such as oil base paints, lacquers, household cleaners, etc.
17. Do not vacuum toxic, carcinogenic, combustible or other hazardous materials such as asbestos, arsenic, barium, beryllium, lead, pesticides or other health endangering materials. Specially designed units are available for these purposes.
18. Do not pick up soot, cement, plaster or drywall dust without cartridge filter and collection filter bag in place. These are very fine particles that may pass through the foam and affect the performance of the motor or be exhausted back into the air. Additional collection filter bags are available.
19. Do not leave the cord lying on the floor once you have finished the cleaning job. It can become a tripping hazard.
20. Use special care when emptying heavily loaded tanks.
21. To avoid spontaneous combustion, empty tank after each use.
22. The operation of a utility vac can result in foreign objects being blown into eyes, which can result in eye damage. Always wear safety goggles when operating vacuum.
23. **STAY ALERT.** Watch what you are doing and use common sense. Do not use vacuum cleaner when you are tired, distracted or under the influence of drugs, alcohol or medication causing diminished control.

## SAVE THESE INSTRUCTIONS

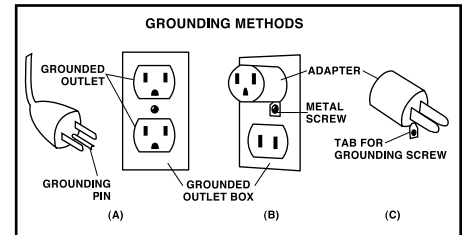
## **WARNING** – DO NOT LEAVE VACUUM UNATTENDED WHEN IT IS PLUGGED IN AND/OR OPERATING. UNPLUG UNIT WHEN NOT IN USE.

## GROUNDING INSTRUCTIONS

This appliance must be grounded. If it should malfunction or breakdown, grounding provides a path of least resistance for electric current to reduce the risk of electric shock. This appliance is equipped with a cord having an equipment-grounding conductor and grounding plug. The plug must be inserted into an appropriate outlet that is properly installed and grounded in accordance with all local codes and ordinances.

## **WARNING** – IMPROPER CONNECTION OF THE EQUIPMENT-GROUNDING CONDUCTOR CAN RESULT IN A RISK OF ELECTRIC SHOCK. CHECK WITH A QUALIFIED ELECTRICIAN OR SERVICE PERSON IF YOU ARE IN DOUBT AS TO WHETHER THE OUTLET IS PROPERLY GROUNDED. DO NOT MODIFY THE PLUG PROVIDED WITH THE APPLIANCE – IF IT WILL NOT FIT THE OUTLET, HAVE A PROPER OUTLET INSTALLED BY A QUALIFIED ELECTRICIAN.

This appliance is for use on a nominal 120-volt circuit, and has a grounded plug that looks like the plug illustrated in **sketch A**. A temporary adapter that looks like the adapter illustrated in **sketches B and C** may be used to connect this plug to a 2-pole receptacle as shown in **sketch B** if a properly grounded outlet is not available. The temporary adapter should be used only until a properly grounded outlet (**sketch A**) can be installed by a qualified electrician. The green colored rigid ear, lug or the like extending from the adapter must be connected to a permanent ground such as a properly grounded outlet box cover. Whenever the adapter is used, it must be held in place by a metal screw.



The green colored rigid ear, lug or the like extending from the adapter must be connected to a permanent ground such as a properly grounded outlet box cover. Whenever the adapter is used, it must be held in place by a metal screw.

IN CANADA, THE USE OF A TEMPORARY ADAPTOR IS NOT PERMITTED BY THE CANADIAN ELECTRICAL CODE. Make sure that the appliance is connected to an outlet having the same configuration as the plug. No adapter should be used with this appliance.

## EXTENSION CORDS

When using the appliance at a distance where an extension cord becomes necessary, a 3-conductor grounding cord of adequate size must be used for safety, and to prevent loss of power and overheating. Use the table below to determine A.W.G. wire size required. To determine ampere rating of your vacuum, refer to nameplate located on rear of motor cover.

Volts	Total length of cord in feet			
	25	50	100	150
120V				
Ampere Rating More Than	AWG			
Not More Than				
0 - 6	18	16	16	14
6 - 10	18	16	14	12
10 - 12	16	16	14	12
12 - 16	14	12	<b>Not recommended</b>	

Before using appliance, inspect power cord for loose or exposed wires and damaged insulation. Make any needed repairs or replacements before using your appliance. Use only three-wire outdoor extension cords which have three-prong grounding-type plugs and three-pole receptacles which accept the extension cord's plug. When vacuuming liquids, be sure the extension cord connection does not come in contact with the liquid.

**NOTE:** STATIC SHOCKS ARE COMMON IN DRY AREAS OR WHEN THE RELATIVE HUMIDITY OF THE AIR IS LOW. THIS IS ONLY TEMPORARY AND DOES NOT AFFECT THE USE OF THE APPLIANCE. TO REDUCE THE FREQUENCY OF STATIC SHOCKS IN YOUR HOME, THE BEST REMEDY IS TO ADD MOISTURE TO THE AIR WITH A CONSOLE OR INSTALLED HUMIDIFIER.

## UNPACKING

1. Remove vacuum cleaner and all accessories from the carton.
2. Important: Open tank cover by pushing latches or clamps outward with thumbs and remove any accessories that may have been shipped in the tank.
3. Assemble dolly or caster system following instructions in included Replacement Parts Manual.

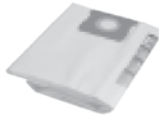
4. Before replacing cover, please refer to Dry Pick-up or Wet Pick-up operation to ensure proper filter installation.
5. Replace cover and make sure latches or clamps are secured over raised area of tank cover.

# The Shop-Vac® Filtration System

## FILTERS

### Best

#### High Efficiency Collection Filter Bags



- Fine dust and particles
- Easy to install and use
- High efficiency for improved air quality and excellent airflow characteristics reducing the loss of suction power
- Dry pick-up only

#### HEPA Abrasion Resistant Cartridge Filter



- Non-stick surface
- Wet or dry pick-up
- Easy cleanup
- Efficient, easy to use
- Fine dust and particles

#### HEPA CleanStream® Cartridge Filter\*



- Non-stick surface
- Wet or dry pick-up
- Easy cleanup
- Efficient, easy to use
- Fine dust and particles



#### HEPA Cartridge Filter



- Dry pick-up only
- Fine dust and particles
- Efficient, easy to use

### Better

#### Ultra Web® Cartridge Filter\*\*



- Wet or dry pick-up
- Easy cleanup
- Fine dust and particles

#### Full Polyester Filter



- Full circumference tank filter
- Dry pick-up only
- Durable, reusable, economical

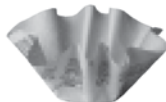
#### Super Performance Polyester Filter



- Dry pick-up only
- General purpose
- Reusable cloth filter

### Good

#### Reusable Disc Filter



- Dry pick-up only
- General purpose
- Reusable disc

#### Foam Sleeve



- Wet pick-up only
- Use as a secondary filter with all other Shop-Vac® filters except Cartridge and HEPA Cartridge filters
- Reusable foam

#### Cloth Filter



- Dry pick-up only
- General purpose
- Reusable cloth filter

## FILTER COMBINATIONS

**Cage Filters:** Cartridge filters, foam sleeve, reusable disc, cloth filter, super performance polyester  
 ++ **PLUS** ++ **Tank Filters:** High efficiency collection filter bags, full polyester filter

**THE MOST EFFICIENT FILTRATION FOR YOUR WET/DRY VACUUM IS A COMBINATION OF:**

**BEST CAGE FILTERS**

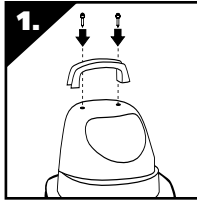


**BEST TANK FILTERS**

# ASSEMBLY

## TOP HANDLE ASSEMBLY

To attach top handle, align holes in handle and holes in motor cover and secure with screws provided (Figure 1).



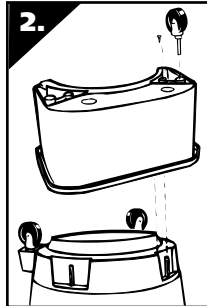
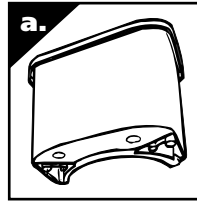
## REAR CASTER ACCESSORY CADDY AND FRONT CASTER FEET ASSEMBLY

(Not standard with all models)

You will find four casters, two caster feet, an accessory caddy and four screws with your wet/dry vacuum.

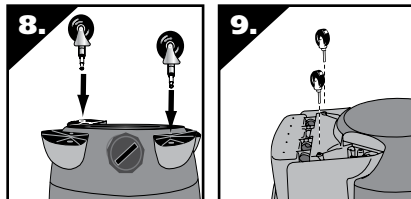
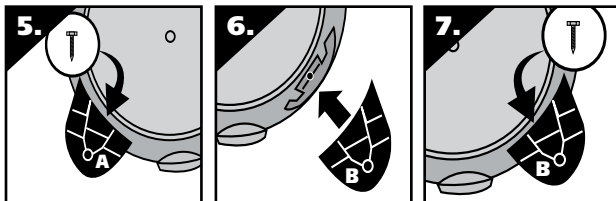
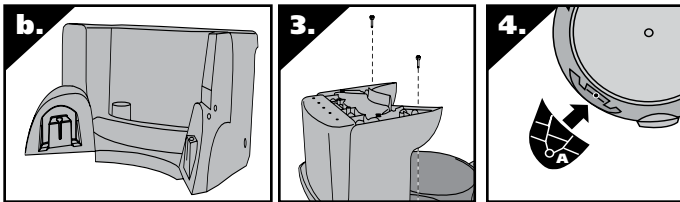
If your accessory caddy looks like the one pictured in (Figure a) assemble as follows.

1. With cord disconnected from receptacle and tank cover removed, turn tank upside down so that the bottom is facing up.
2. Insert two caster feet into adjacent slots at front of tank. Secure with screws provided.
3. Take accessory caddy and place into remaining slots at back of tank. Secure with screws provided (Figure 2).
4. Install casters into caddy and feet by inserting the caster stems into the holes provided. Apply pressure and twisting motion until casters snap into place.



If your accessory caddy looks like the one pictured in (Figure b) assemble as follows.

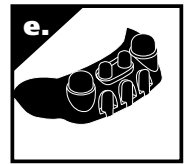
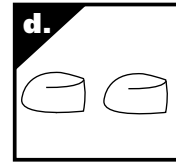
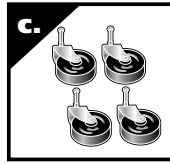
1. With cord disconnected from receptacle and tank cover removed, turn tank upside down so that the bottom is facing up.
2. Take accessory caddy and place into slots (on rear of tank opposite of drain). Secure with screws provided (Figure 3).
3. With tank drain facing you, take caster foot marked with the letter A (Figure 4) and place in slot on left side of tank also marked with the letter A. Secure with screw provided (Figure 5).
4. Take caster foot marked with the letter B (Figure 6) and place in slot on right side of tank also marked with the letter B. Secure with screw provided (Figure 7).
5. If flatwashers are included in hardware package place flatwasher over stem of caster before installing casters into feet or accessory caddy. **NOTE:** Flatwashers are not required with all units.
6. Install casters into caster feet and accessory caddy by inserting the caster stems into the holes provided. Apply pressure and twisting motion until caster snap into place (Figure 8 & 9).



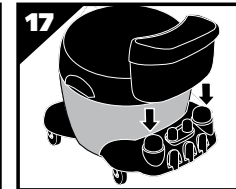
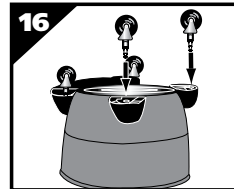
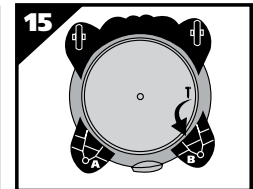
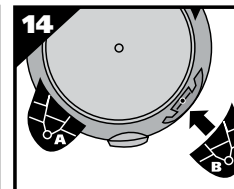
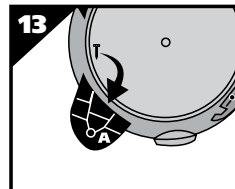
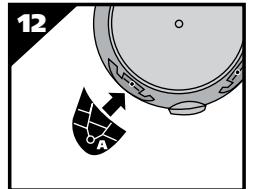
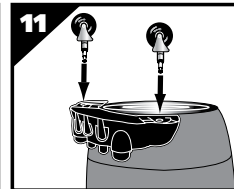
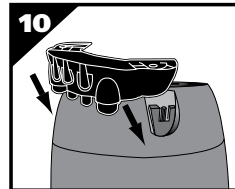
## REAR CASTER DOLLY/TOOL HOLDER AND FRONT CASTER FEET ASSEMBLY

(Not standard with all models)

You will find four casters (c.), two caster feet (d.), rear caster dolly/tool holder (e.), and four screws with your wet/dry vacuum. Assemble as follows:



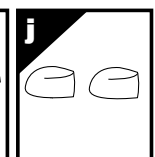
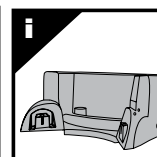
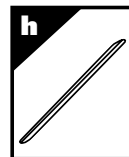
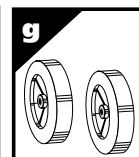
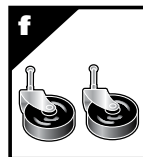
1. With cord disconnected from receptacle and tank cover removed, turn tank upside down so that the bottom is facing up.
2. Take rear caster dolly and place into slots (on rear of tank, opposite of drain) and secure with screws provided (Figure 10).
3. If flatwashers are included in hardware package place flatwasher over stem of caster before installing casters into feet. **NOTE:** Flatwashers are not required with all units.
4. Insert casters into bottom of rear caster dolly by placing stem of caster into holes provided. Apply pressure and twisting motion until casters snap into place (Figure 11).
5. With tank drain facing you, take caster foot marked with the letter A (Figure 12) and place in slot on left side of tank also marked with the letter A and secure with screw provided (Figure 13).
6. Take caster foot marked with the letter B (Figure 14) and place in slot on right side of tank also marked with the letter B and secure with screw provided (Figure 15).
7. Insert casters into feet by placing stem of caster into holes provided. Apply pressure and twisting motion until casters snap into place (Figure 16).
8. Return tank to upright position.
9. Place tool basket (Not standard with all models) with curved surface against tank on rear caster dolly assembly (Figure 17).



## REAR WHEEL DOLLY/TOOL HOLDER AND FRONT CASTER FEET ASSEMBLY

(Not standard with all models)

You will find two casters (f.), two large rear wheels (g.), one axle (h.), rear dolly/basket (i.), two caster feet (j.) and four screws with your wet/dry vacuum. Assemble as follows:

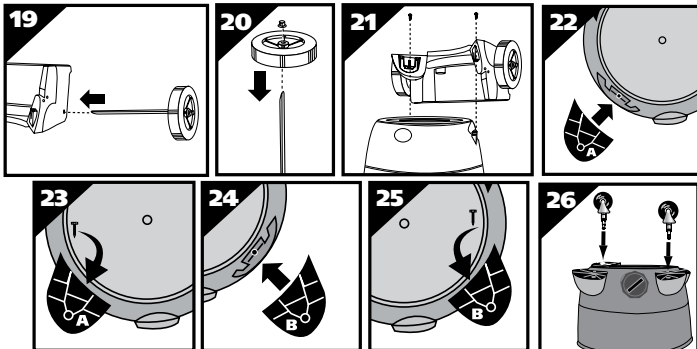
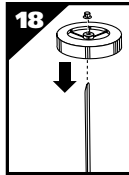


1. With cord disconnected from receptacle and tank cover removed, turn tank upside down so that the bottom is facing up.

- Place axle upright on a hard surface and hammer on (1) cap nut. Place (1) wheel on axle and slide down to cap nut (**Figure 18**). Be sure flat side of wheel hub is facing outward.
- Slide axle through holes provided in dolly/basket (**Figure 19**).
- Slide remaining wheel onto axle and hammer on second cap nut (**Figure 20**).
- Take rear dolly assembly and place into slots (on rear of tank opposite drain) and secure with screws provided (**Figure 21**).
- With tank drain facing you, take caster foot marked with the letter A (**Figure 22**) and place in slot on left side of tank also marked with the letter A and secure with screw provided (**Figure 23**).
- Take caster foot marked with the letter B (**Figure 24**) and place in slot on right side of tank also marked with the letter B and secure with screw provided (**Figure 25**).
- If flatwashers are included in hardware package place flatwasher over stem of caster before installing casters into feet.

**NOTE:** Flatwashers are not required with all units.

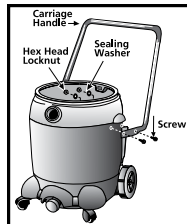
- Insert casters into feet by placing stem of caster into holes provided. Apply pressure and twisting motion until casters snap into place (**Figure 26**).
- Return tank to upright position.



## INSTALLING THE CARRIAGE HANDLE

**(Not standard with all models)**

Stand vacuum right side up. Place metal carriage handle outside of tank and under the side carrying handles. Be sure to spread the ends of the carriage handles when assembling to prevent damage to the tank. Align holes of carriage handle to holes in tank and fasten tightly with screws, washers, and nuts provided. The sealing washer and screw have a close fitting tolerance. Rubber side of sealing washer should fit against inside wall of tank. Failure to properly install rubber washer could result in water leakage or loss of performance. Replace the tank cover and clamp the lid latches securely.



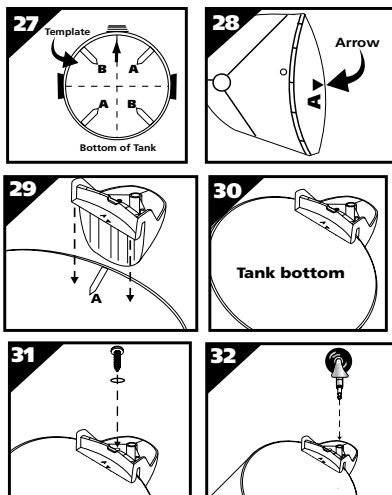
## CASTER FEET AND CASTER ASSEMBLY FOR METAL TANKS

**(Not standard with all models)**

- With cord disconnected from receptacle and tank cover removed, turn tank upside down so that the bottom is facing up.
- With a pair of scissors, trim the enclosed template to fit your size tank. Sizes will be 11", 14" or 16" diameters.
- Once template is cut out, place on bottom of tank. Align inlet arrow on template with center of inlet on tank (**Figure 27**).
- If caster feet are attached together, separate by removing webbing.
- Take caster foot marked with the letter A and align arrow on foot (**Figure 28**) with arrow on template also marked with the letter A (**Figure 29**).
- Place groove of foot over rim of tank and push until the caster foot is tight against bottom of tank (**Figure 30**).
- Secure feet with screw and washer when provided (**Figure 31**).
- If flatwashers are included in hardware package place flatwasher over stem of caster before installing casters into feet.

**NOTE:** Flatwashers are not required with all units.

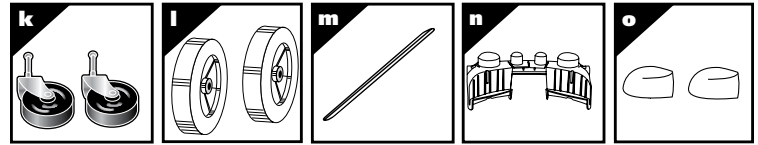
- Insert casters into feet by placing stem of caster into holes provided. Apply pressure and twisting motion until casters snap into place (**Figure 32**).
- Repeat steps 3-8 with remaining feet.
- Return tank to upright position.



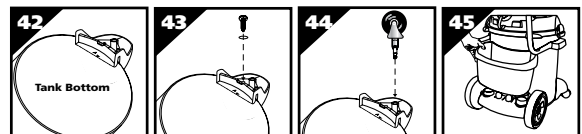
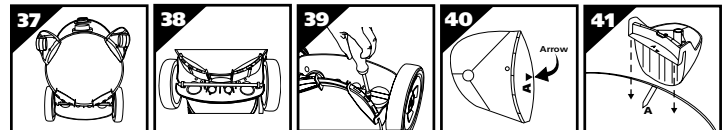
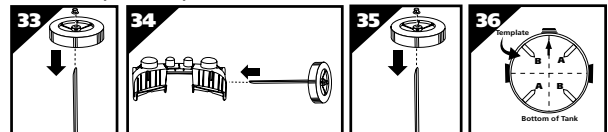
## REAR WHEEL DOLLY/TOOL HOLDER AND FRONT CASTER FEET ASSEMBLY FOR METAL TANKS

**(Not standard with all models)**

You will find two casters (k.), two large rear wheels (l.), one axle (m.), rear dolly (n.), two caster feet (o.) and four screws with your wet/dry vacuum. Assemble as follows:



- With cord disconnected from receptacle and tank cover removed, turn tank upside down so that the bottom is facing up.
- Place axle upright on a hard surface and hammer on (1) cap nut. Place (1) wheel on axle and slide down to cap nut (**Figure 33**). Be sure flat side of wheel hub is facing outward.
- Slide axle through holes provided in dolly (**Figure 34**).
- Slide remaining wheel onto axle and hammer on second cap nut (**Figure 35**).
- With a pair of scissors, trim the enclosed template to fit your size tank. Sizes will be 11", 14" or 16" diameters.
- Once template is cut out, place on bottom of tank, align inlet arrow on template with center of inlet on tank (**Figure 36**).
- Align cutouts in center of rear dolly with bars on template (**Figure 37**).
- Place groove of rear dolly over rim of tank and push until the dolly is tight against bottom of tank (**Figure 38**).
- Secure dolly with screw and washer provided (**Figure 39**).
- If caster feet are attached together, separate by removing webbing.
- Take caster foot marked with the letter A and align arrow on foot (**Figure 40**) with arrow on template also marked with the letter A (**Figure 41**).
- Place groove of foot over rim of tank and push until the caster foot is tight against bottom of tank (**Figure 42**).
- Secure feet with screw and washer provided (**Figure 43**).
- Insert casters into feet by placing stem of caster into holes provided. Apply pressure and twisting motion until casters snap into place (**Figure 44**).
- Place tool basket (**not standard with all models**), with curved surface against tank, on rear wheel dolly assembly (**Figure 45**).



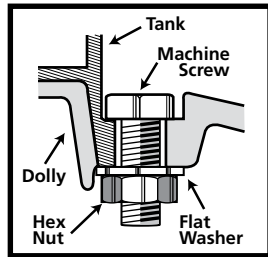
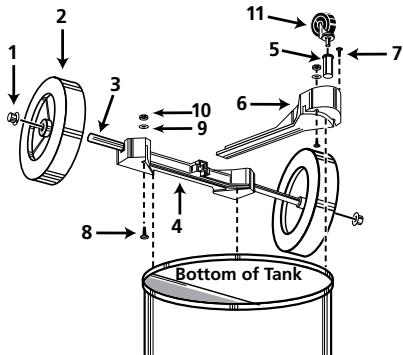
## DOLLY, CARRIAGE HANDLE AND BASKET ASSEMBLY FOR METAL TANKS

**(Not standard with all models)**

- Remove head from tank and place tank upside down on a flat surface.
- Place wheels on rear frame/axle assembly with extended hub of wheel towards dolly frame and place cap nuts on axle. Secure with hammer.
- Insert caster socket into front frame and secure with Phillips head screw.
- Place groove in front frame into lip of tank and position so frame is directly above inlet.
- Position grooves of rear frame into lip of tank and align so rear and front frames engage.
- Secure dolly frame to tank by placing machine screws up through holes in dolly frame. Ensure head of screw is fully recessed in area provided. After machine screw is inserted, tighten with flatwasher and hex nut.
- Insert caster in caster socket and apply downward pressure until caster snaps into place.
- Return vacuum to upright position. Attach carriage handle to tank by inserting bolt through the center hole of handle and tank, secure with nut provided. Attach side handles with screws provided. Be sure to spread ends of carriage handle when assembling to prevent damage to tank.
- Insert basket through center of carriage handle and slide into place.

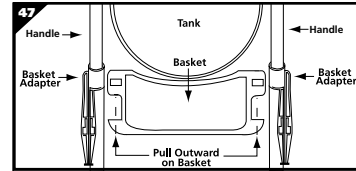
## ITEM NUMBER & DESCRIPTION

- |                  |                        |
|------------------|------------------------|
| 1. Cap nut       | 7. #8 x 1/2" lg. Screw |
| 2. 8" wheel      | 8. 1/4 - 20 x 3/4" lg. |
| 3. Axle          | Machine screw          |
| 4. Rear frame    | 9. 1/4" Flatwasher     |
| 5. Caster socket | 10. 1/4 - 20 Hex nut   |
| 6. Front frame   | 11. Caster             |

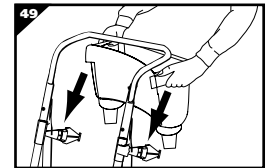
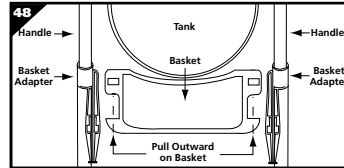


- Attach handle onto uprights by pushing down and holding buttons in on uprights.
- Place tank retaining bracket through slot and bolt in rear frame and screw on knob.
- Slide bumper down over main dolly frame until it bottoms out.
- Place axle upright on a hard surface and hammer on (1) cap nut. Place (1) wheel on axle and slide down to cap nut. Slide axle through rear of frame and slide on other wheel. Before assembling cap nut on other end of axle, be certain dolly is assembled correctly. (You may place tank on dolly and tighten knob of retaining bracket to be sure of correct assembly.)
- After ensuring dolly is assembled correctly remove tank and place dolly on side with installed cap nut on hard surface and hammer second cap nut on axle.
- Place accessory basket on adapters and pull out on outer rim of basket and snap into place (Figure 49).

### For 14" Diameter Tanks

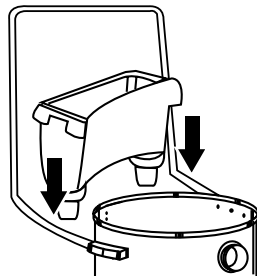
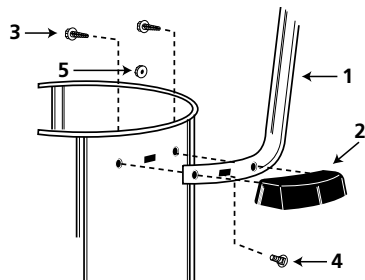


### For 16" Diameter Tanks



## ITEM NUMBER & DESCRIPTION

- |                              |                         |
|------------------------------|-------------------------|
| 1. Metal tank handle         | 4. Bolt 1/4 - 20 x 1/2" |
| 2. Side tank handle          | 5. 1/4 - 20 Hex nut     |
| 3. #10 x 3/4" Screw hex head |                         |



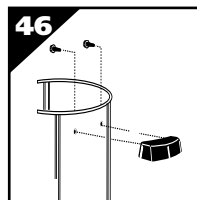
## ITEM NUMBER & DESCRIPTION

- |  |  |
|--|--|
| 1. Handle  | 12. Tank retainer bracket                  |
| 2. Handle upright                                  | 13. Threaded knob                          |
| 3. Handle brace                                    | 14. Axle                                   |
| 4. 1/4 - 20 x 11/4" Hex head machine screw (Black) | 15. 1/4 - 20 x 5/8" Hex head machine screw |
| 5. 1/4" External tooth lockwasher                  | 16. 1/4 - 20 Hex nut                       |
| 6. 1/4 - 20 Hex nut (Black)                        | 17. Caster socket                          |
| 7. Rear dolly frame                                | 18. Caster                                 |
| 8. Main dolly frame                                | 19. Bumper                                 |
| 9. 5/16 - 18 x 2 1/2" Hex head bolt                | 20. 10" Wheel (25.4cm)                     |
| 10. 5/16" Split lockwash                           | 21. Cap nut                                |
| 11. 5/16 - 18 Hex nut                              | 22. Accessory basket                       |
|  | 23. Basket adapter                         |

## SIDE TANK HANDLE ASSEMBLY

(Not standard with all models)

Attach side handles to tank with screws provided (Figure 46).



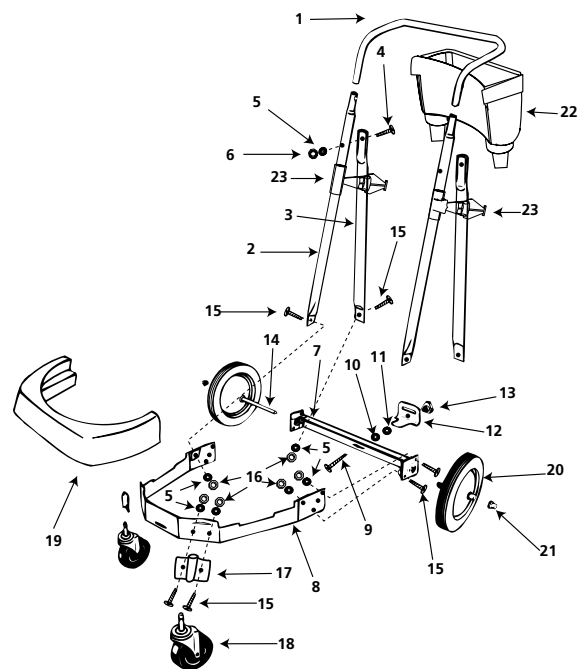
## FOUR WHEEL HEAVY DUTY DOLLY ASSEMBLY

(Not standard with all models)

Tools required:

(2) 1/2 inch open end wrenches, (2) 7/16 inch open end wrenches, or a socket set and a hammer.

- Insert 2 1/2 inch long bolt through center hole in rear frame, attach split lockwasher and nut and tighten securely.
- Attach handle brace to back of rear frame with 5/8 inch long machine screws, lockwashers, and nuts. (Finger tighten only.)
- Position main frame inside rear frame. Attach (2) 5/8 inch long machine screws, lockwashers and nuts in both sides. Tighten securely.
- Attach handle uprights, inside main frame (make sure buttons at top face inward) using 5/8 inch long machine screws, lockwashers and nuts. (Finger tighten only.) Align holes at top of handle braces with holes in handle uprights. Attach with 1 1/4 inch long machine screws, lockwashers and nuts. (Tighten securely.)
- Go back and tighten machine screws at bottom of uprights and braces.
- Attach caster sockets (open end down) to front of main frame using 5/8 inch long machine screws, lockwashers and nuts. Insert casters into sockets.
- Slide basket adapters on handle.
- See Figure 47 and Figure 48 for correct installation of adapters.



## BAND DOLLY ASSEMBLY

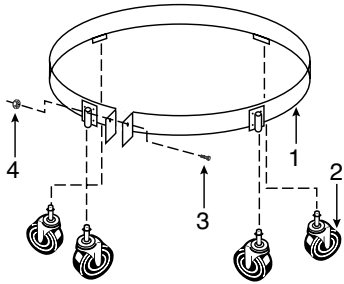
(Not standard with all models)

- Place casters into sockets on band assembly.
- Place tank upside down and slip band assembly over lip on bottom of tank.

3. Insert bolt and tighten nut until secure.

### ITEM NUMBER & DESCRIPTION

- |                          |                                   |
|--------------------------|-----------------------------------|
| 1. 55 Gal. band assembly | 3. Hex head bolt, 1/4 - 20 x 13/4 |
| 2. Caster                | 4. Hex nut, 1/4 - 20              |



## TOOL HOLDER

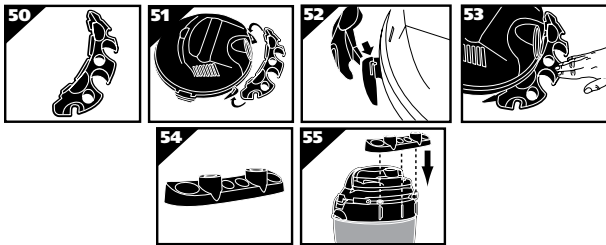
(Not standard with all models)

If your tool holder looks like the one pictured in **Figure 50**, follow these instructions.

1. With rear of unit facing you, take tool holder and position it with tabs facing rear of unit (**Figure 51**).
2. Place "J" shaped tabs into the slots on cord wraps (**Figure 52**).
3. Press down until tabs snap into place.
4. Press down on center of tool holder until tab latches on bottom lid (**Figure 53**).

If your tool holder looks like the one pictured in **Figure 54**, follow these instructions.

1. With rear of unit facing you, take tool holder and slide over notches on rear of tank (**Figure 55**).



## INSTALLATION

(See Operation section for Filters)

## OPERATION

### ⚠ DANGER

This equipment incorporates parts such as switches, motors or the like that tend to produce arcs or sparks that can cause an explosion. Do not pick up flammable, combustible, or hot materials. Do not use around explosive liquids or vapors, as electrical devices produce arcs or sparks which can cause a fire or explosion - do not use at filling stations or anywhere gasoline is stored or dispensed.

### Blower Use

Some vacuum cleaners can be used as a powerful blower by inserting the hose into the motor housing exhaust port.

### ⚠ WARNING

**ALWAYS WEAR EYE PROTECTION TO PREVENT ROCKS OR DEBRIS FROM BEING BLOWN OR RICOCHETING INTO THE EYES OR FACE WHICH CAN RESULT IN SERIOUS INJURY.**

### ⚠ WARNING

**ALWAYS DISCONNECT THE PLUG FROM THE WALL OUTLET BEFORE REMOVING THE TANK COVER.**

### ⚠ CAUTION

#### Keep Filters Clean

The efficiency of these vacuum cleaners is largely dependent on the filter.

**A clogged filter can cause overheating and possibly damage the vacuum cleaner.**

Clean or replace filters regularly. Do not use the vacuum or filters for collecting hazardous or other health endangering materials.

**NOTE:** Never machine wash or dry filters.

#### Cartridge Filter Maintenance

### ⚠ NOTICE

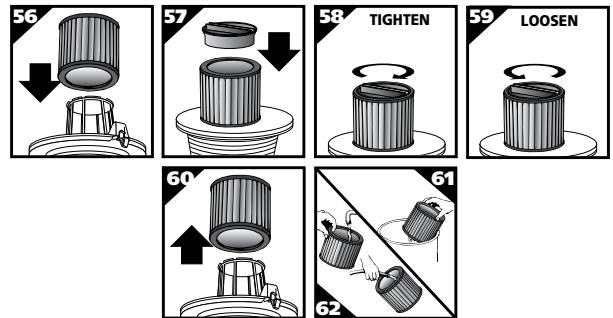
**This filter is made of high quality paper designed to stop small particles of dust. The filter can be used for wet or dry pick-up. A dry filter is necessary to pick up dry material. If you use your vac to pick up dust when the filter is wet, the filter will clog quickly and be very difficult to clean. The filter may become saturated when picking up large quantities of liquid causing misting to appear in the exhaust air. At this time, you should dry or change the filter to eliminate this occurrence. Please handle the filter carefully when removing it for cleaning or when installing it. Check the filter for tears or small holes. Even a small hole can cause dust to be exhausted. Do not use a filter with holes or tears. Replace it immediately.**

### ⚠ WARNING

**The cartridge filter is not compatible when utilizing the QPV® Pump Vacuum's pump pick-up assembly.**

#### Installing & Cleaning:

1. Slide cartridge filter down over filter cage (**Figure 56**).
2. Place filter retainer on top of cartridge filter (**Figure 57**).
3. Hold onto base of lid cage with one hand and turn retainer clockwise to tighten (**Figure 58**).
4. To remove filter for cleaning, again hold onto base of lid cage with one hand and turn retainer counter clockwise to loosen (**Figure 59**).
5. Slide cartridge filter off filter cage (**Figure 60**).
6. Clean dry filter by tapping it on inside of waste can (**Figure 61**).
7. Clean wet filter by rinsing from the inside (**Figure 62**).
8. When wet (to prevent mold and/or mildew build-up), the cartridge filter should be removed and allowed to air dry for a 24-hour period before being re-installed back onto the filter cage.



#### Dry Pickup

See the Shop-Vac® Vacuum Filter Reference and Installation chart on page 3 to determine which type of dry filtration is best for your needs. Better quality filtration is required for finer dry materials. Collection filter bags are recommended for very fine materials such as dry wall dust.

**Note:** When using the vacuum to pick-up very fine dust such as sawdust or dry wall dust, it will be necessary to empty the tank and clean the filter at more frequent intervals to maintain maximum pick-up power or upgrade to collection filter bags.

#### Wet Pickup

See the Shop-Vac® Vacuum Filter Reference and Installation chart on page 3 to determine which type of wet filtration is best for your needs. Remove the dry filters plus all dirt and debris found in the tank assembly. Wet pick-up requires only the foam sleeve or cartridge filter to be in place. Do not use dry filters for wet pick-up. When picking up several tanks full of liquid, the filter will become saturated and misting may appear in the exhaust air. At this time, you should dry the filter or change to a dry filter to eliminate the misting and possible dripping of liquid around the lid. After completing a wet pick-up job, raise the hose to drain into tank before shutting off the vac. The interior of the tank should be periodically rinsed clean.

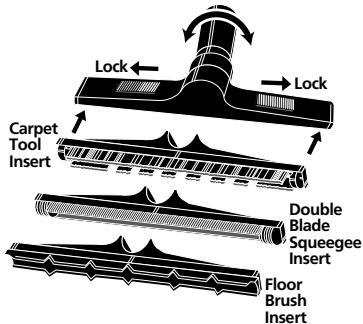
**Note:** Wet pick-up accessories should be washed periodically with soap and water, especially after picking up wet, sticky liquids.

# ACCESSORIES, HOSES AND WANDS

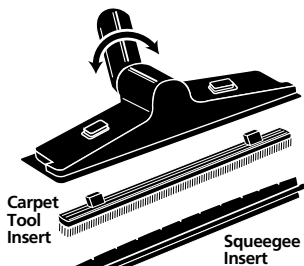
All Shop-Vac® vacuums covered in this manual come with accessories to cover wet and dry cleanup jobs. Not all vacs include all accessories shown.

## Nozzles and Accessories

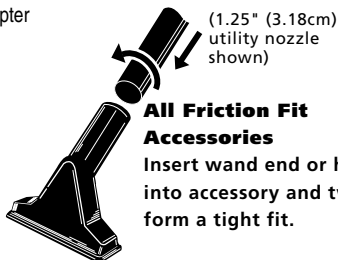
**Note:** When using 1.5" (3.8cm) accessories, adapter may be needed to attach accessory to hose end.



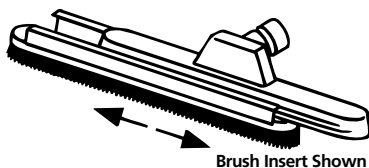
**14" (35.56cm) ABS Plastic Master Nozzle**  
Inserts lock into place by sliding red buttons. Elbow swivels.



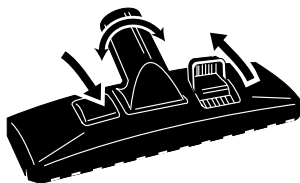
**Deluxe 12" (30.48cm) Nozzle**  
Inserts snap-in and out. Elbow swivels.



**All Friction Fit Accessories**  
Insert wand end or hose into accessory and twist to form a tight fit.

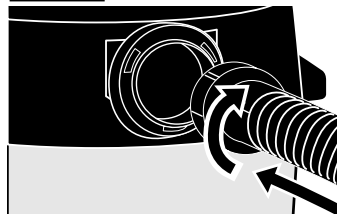


**14" (35.56cm) Metal Master Nozzle**  
Inserts lock into place by sliding insert onto nozzle.

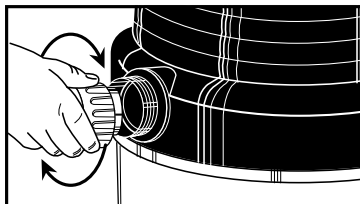


**Dual Surface Selector Nozzle**  
Levers control brush position for various types of cleaning.

## Hoses

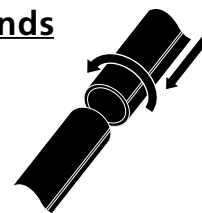


**All Friction Fit Hoses**  
Insert machine hose end into tank and twist to form a tight fit.

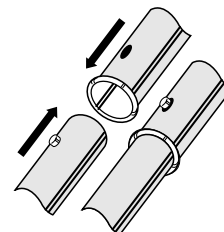


**Posi-Lock Hoses**  
Insert hose collar onto threaded tank inlet and tighten.

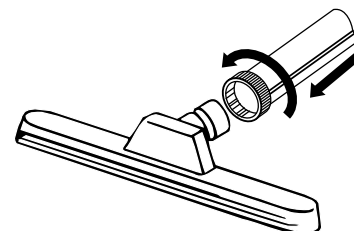
## Wands



**All Friction Fit Wands**  
Insert wand ends together and twist to form a tight fit.



**Positive Locking Wands**  
Insert wand ends together until metal push button locks.



**Locking Nut Wand End**  
Insert wand end over nozzle and tighten nut.

## Automatic Shutoff

The vacuum cleaner is equipped with an automatic shutoff that operates when picking up liquids. When the liquid in the tank reaches a certain level, an internal float will seat itself against a seal at the intake of the motor, shutting off suction. When this happens, the motor will develop a higher than normal pitch noise indicating that you need to switch off the vac and empty the liquid.

**Note:** If accidentally tipped over, the float shutoff device could seat against the seal and shut off suction. If this happens, simply place the vacuum cleaner in upright position and turn off the switch until the float returns to its normal position.

## CAUTION

### Emptying Tank

Use special care when emptying heavily loaded tanks. Your Wet/Dry Vacuum may be emptied of liquid waste by removing the tank cover. To empty, switch off the vac and remove the plug from the wall receptacle. Remove the tank cover and empty the tank.

**Note:** For those models with a drain plug, tank can be emptied by removing drain cap and draining liquid waste into a suitable drain.

## Maintenance

## WARNING

Be sure to disconnect power supply before attempting to service or remove any components.

## Storage

Before storing the vacuum cleaner, always empty and clean the tank. Never allow liquids to sit in the tank for any extended period of time.

**Always store the vacuum cleaner indoors.**

## Lubrication

No lubrication is necessary as the motor is equipped with lifetime lubricated bearings.

## Service

Do not attempt to service your Shop-Vac® wet/dry vacuum cleaner beyond that described in this manual. Refer all other servicing to a qualified service center.

## WARNING

If any of the motor housing parts should become detached or broken, exposing the motor or any other electrical components, operation should be discontinued immediately to avoid personal injury or further damage to the vacuum. Repairs should be made before reusing the vacuum.



# SHOP-VAC® VACUUM FILTER CLEANING REFERENCE



## Foam Sleeve

Rinse with water, dry and reinstall.



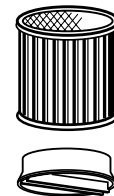
## Full Polyester Filter

Brush off dirt and reinstall; if filter gets wet, rinse with water, dry and reinstall.



## Super Performance Filter

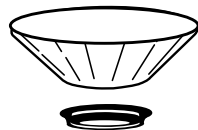
Dispose of after filter develops rips or tears.



## Cleanstream® Abrasion Resistant Cartridge Filter

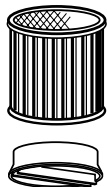
Clean installed filter by simply tapping or shaking the vacuum unit. To restore optimum airflow, remove filter, tap end cap against a hard surface to loosen debris. Additional debris can be removed by rinsing outside surface of filter with running water. Avoid dampening inside of filter. Completely air dry filter after washing.

**Important:** DO NOT BRUSH. DO NOT clean filter media with abrasive materials. Do not scrub to clean between pleats. This will permanently damage the filter's ability to stop dust.



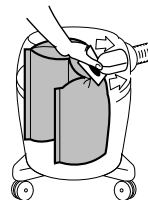
## Reusable Disk Filter

Rinse with water, dry and reinstall; do not machine wash.



## Cartridge Filter & Ultra Web® Cartridge Filter

From inside of filter, rinse with water, dry completely and reinstall; do not use with foam sleeve (except for 962 series).



## All Collection Bags

Dispose of bag when full.

## Troubleshooting Chart

Symptom	Possible Cause(s)	Corrective Action
<b>Parts/accessories missing</b>	1. Packed in tank	1. Check in tank
<b>Vacuum cleaner will not start</b>	1. No power at receptacle 2. Defective switch 3. Defective motor	1. Check for power 2. Replace switch 3. Replace motor
<b>Dust discharging from exhaust</b>	1. Filter not installed/not installed properly 2. Filter damaged 3. Filter clogged or dust is too fine 4. Filter not functional	1. Properly install filter 2. Replace filter 3. Use more efficient filter 4. Clean and replace filter
<b>Loss of suction</b>	1. Loose hose connection 2. Filter clogged 3. Full tank 4. Hole in hose	1. Tighten hose connection 2. Clean or replace filter 3. Empty tank 4. Replace hose
<b>Static shock</b>	1. Dry environment 2. Relative humidity of air is low	1. Add moisture to air (if practical, use a console or installed humidifier). 2. This situation is temporary and does not affect the use of the vacuum cleaner.