

# Operating Instructions

## Series 5005 Spring Driven Hose Reels

Low, Medium and High Pressure Model Numbers:

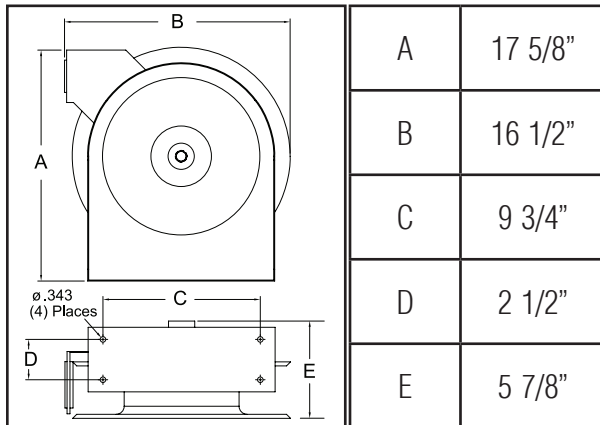
5605 OLP  
5650 OLP

5605 OMP

5405 OHP  
5435 OHP



### Dimensions



### SAFETY

1. Do not use reel at higher pressures or temperatures than listed on the back of this bulletin.
2. Remove all spring tension before beginning disassembly process.

### INSTALLATION:

A flexible hose connection must be used between the hose reel inlet and the source of supply to prevent possible misalignment and binding.

### MOUNTING:

The hose reel is equipped with a universal mounting bracket so that it can be mounted on the floor, wall or ceiling; whichever place is convenient. The hose guide arm can be moved to the position desired by removing the screws fastening the guide bracket to the reel base. Shift the guide arm bracket so the hose comes off the reel at the desired position and replace the screws. **NOTE:** For proper installation in wall mount applications, ensure reel is mounted with inlet on the right as you are facing the reel. Failing to do so could cause latching issues.

### LUBRICATION:

Hose reel spring and bearings are factory lubricated and require no further lubrication.

### REPLACING HOSE:

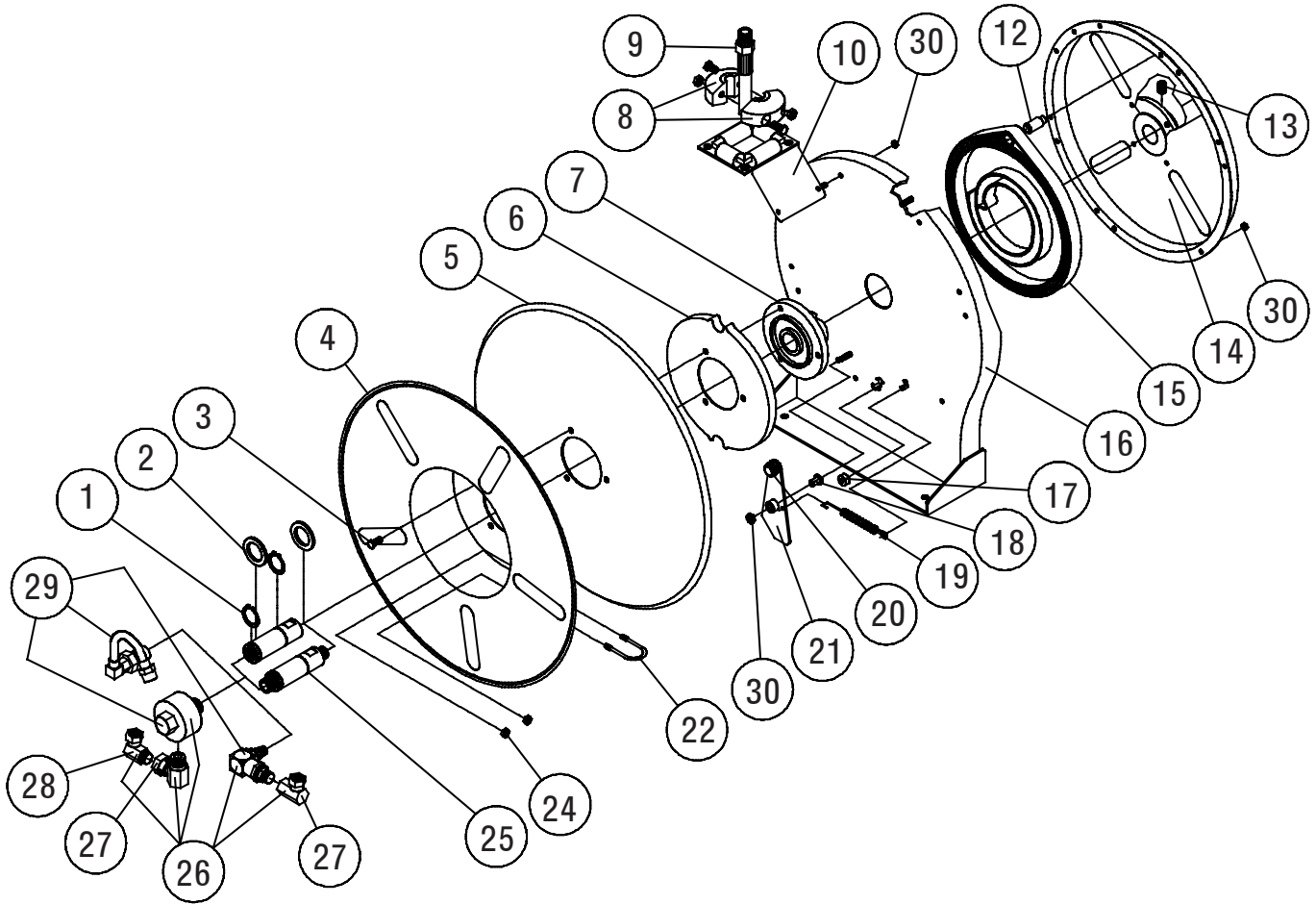
1. Wind spool flange clockwise-facing swivel-until spring is tight.
2. Back off three turns and latch.
3. Insert hose through roller guide.
4. Connect hose fitting to swivel joint and secure hose with clamps.

### ADJUSTMENTS:

To adjust spring tension, add or remove wraps of hose from the spool, one wrap at a time until desired tension is obtained.

### REPAIRS:

Extensive repairs should be performed only by an authorized serviceman or factory to avoid damage which may void your warranty. Remove all spring tension before beginning disassembly process.



Item #	Part #	# Req.	Description	Item #	Part #	# Req.	Description	Item #	Part #	# Req.	Description
1	300031	2	1" Snap Ring	10	S500107	1	Guide Arm Assembly	19	S400018	1	Latch Spring
2	300034	2	Spacing Washer	12	S261360	1	Spring Case Stud	20	400020	1	O-ring
3	S295-102	3	Hex Screw	13	300006	1	3/8-16 x 1/2" Set Screw	21	S400109	1	Latch Plate Assembly
4	260149	1	Reel Flange	14	S600094	1	Spring Case & Hub Assembly	22	2-117440	1	U-Bolt Hose Clamp
5	260151	1	Sheave Disk	16	600029	1	Base Assembly	24	261650-1	2	1/4-20 Nylock Nut
6	S500019	1	Latch Cam	17	S400021	1	Latch Bumper	30	S82-15	9	Nyloc Nut 10-32 x 3/8"
7	S260648	1	Spring Arbor	18	S400012	1	Latch Bushing				

Item #	Description	# Req.	5605 OLP	5650 OLP	5605 OMP	5405 OHP	5435 OHP
8	Bumper Stop Assembly	1	None	1-HR1004	None	None	1-HR1004
9	Hose Assembly	1	None	S601013-50	None	None	20-260044
15	Drive Spring Assembly	1	S600050	S600050	S600050	S600050	600020
25	Main Shaft	1	602555	602555	602305	602306	602306
26	Swivel & Ell Assembly	1	None	None	S600358	S260492	S260492
27	90° Elbow	1	None	None	S257-72	S257-10	S257-10
28	90° Elbow	1	None	None	S257-25	None	None
29	Swivel Assembly	1	S600886	S600886	602032	S260042	S260042
Hose I.D. and Length			None	3/8" x 50'	None	None	1/4" x 35'
Reel Inlet Connection			3/8" F.P.T.	3/8" F.P.T.	3/8" F.P.T.	1/4" F.P.T.	1/4" F.P.T.
Max. Operating Pressure			500 P.S.I.	300 P.S.I.	3000 P.S.I.	5000 P.S.I.	5000 P.S.I.
Max. Operating Temperature			210 °F	150 °F	210 °F	210 °F	210 °F