



EOS II™ INTRINSICALLY SAFE LED HEADLAMP

Operating and Maintenance
Instructions

Battery Installation — See Battery Installation Diagram

- 3 AAA**
- Alkaline (LR03)
 - LITHIUM (L92)
 - Lithium batteries may be used, but have not been approved by UL

Princeton Tec cares about the environment and recommends recycling batteries.

Observe proper battery polarity when installing the batteries. Improper installation of the batteries will damage the light and void the warranty.

WARNING ⚠

- Never mix fresh and used batteries.
- Never mix different battery brands or chemistry types.
- Always remove drained batteries immediately.
- Remove batteries during long periods of storage.

NOTE: Lithium batteries offer extended constant brightness time, extreme cold weather performance, and are lighter weight. Rechargeable NiCad or NiMH batteries may result in reduced brightness due to lower nominal voltage.

The EOS II battery compartment has a waterproof seal. It is important to keep this seal free from dirt and away from harsh chemicals in order to preserve waterproof integrity. Inspect the seal every time batteries are changed. If dirt is present, wipe gently with a damp cotton swab and mild soap until dirt is removed.

NOTE: Some battery types can emit hydrogen gas, which can create an explosion potential in sealed devices if it is not vented or removed. The EOS is equipped with a platinum catalyst to remove this gas. Upon severe impact, the catalyst could fracture. If you notice a rattling sound in the headlamp or gray particles in the battery compartment, do not use the headlamp. See the warranty and return policy for more information.

Switch Operation - See Switch Operation Diagram

Modes (High and low) are selected by pressing and releasing the button within 1.5 seconds of the previous button press.

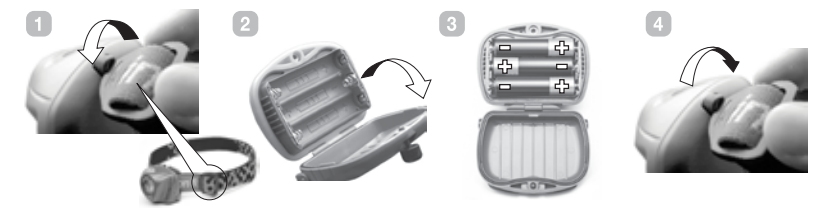
To turn the EOS II off, press and hold until the light turns off.

Troubleshooting

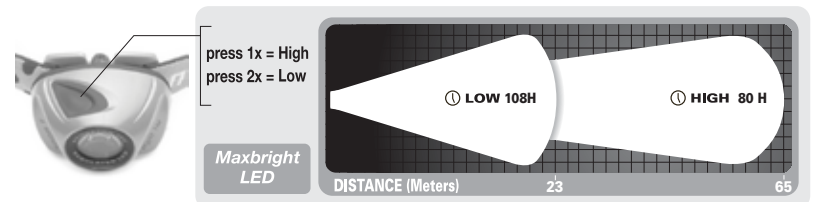
If the EOS II fails to light:

- Check the batteries for proper installation.
- Replace batteries if proper installation is confirmed.

Battery Installation



Operation



* Princeton Tec calculates total burn time as the time it takes for the light source to produce a minimum of 0.25 lux at 2 meters. 0.25 lux is about the equivalent of a full moon on a clear night. Regulated burn time is less than overall burn time.

- Check circuit board for water (the seal may have been compromised by improper rear cover installation). The light will resume normal operation once the water is shaken or blown out and the light is left open until completely dry. If the light has been contaminated with salt water, flush the unit with fresh water and dry as described above.

Princeton Tec reserves the right to change product specifications without notice.

FOR CALIFORNIA RESIDENTS:

WARNING: This product contains Bisphenol A (BpA) a chemical known to the State of California to cause birth defects or other reproductive harm.

PRINCETON TEC EOS II FOR USE IN HAZARDOUS LOCATIONS
ONLY AS TO INTRINSIC SAFETY.
3PRJ

CL I, DIV 1, GR A, B, C, D, TEMP CODE T4, Exia.
WARNING - SUBSTITUTION OF COMPONENTS MAY IMPAIR INTRINSIC SAFETY.
WARNING - TO PREVENT IGNITION OF FLAMMABLE OR COMBUSTIBLE ATMOSPHERES, DISCONNECT POWER BEFORE SERVICING.
WARNING - TO REDUCE THE RISK OF IGNITION OF A FLAMMABLE OR EXPLOSIVE ATMOSPHERE, CHANGE BATTERIES ONLY IN AN AREA KNOWN TO BE NON-HAZARDOUS.
WARNING - TO REDUCE THE RISK OF EXPLOSION; DO NOT MIX OLD BATTERIES WITH USED BATTERIES, OR MIX BATTERIES FROM DIFFERENT MANUFACTURERS.
APPROVED FOR USE WITH THREE 1.5V AAA BATTERIES, DURACELL MN2400 OR ENERGIZER E92.