

2016 | COMPLETE PRODUCT CLUSTER



**POISON**  **SPYDER**

# Poison Spyder 2016

Poison Spyder Story

Larry McRae

Quality and Craftsmanship

Motorsports Pedigree

Toughest Trails in the U.S.A.

SpyderShell™ Armor Coat

The Cluster

## Bumpers

Built For the Hammers - BFH™

RockBrawler™

Tire Carriers

## Fenders & Flares

Crusher Flare

DeFenders

## Rocker Armor

Brawler Rockers™

Rocker Knockers™

Ricochet Rockers™

## Corner Armor

Crusher Corners™

Tramp Stamp™ & TrailGate™

## Hood Louver

Hood Louver

## Cages

Lazer-Fit™ Full Cage

## Diff Covers

Bombshell™ Diff Covers

Applications and Data

Index

# THE POISON SPYDER STORY

Since World War II, the Jeep has been the all-around go-anywhere vehicle. But as the sport of four-wheeling has evolved, the trails have gotten tougher and the Jeeps have evolved to meet the challenge. Most Jeep modifications start out as home-made, DIY projects. And as hardcore rock-crawling began to grow in popularity during the 1990's, many Jeep enthusiasts were starting to "armor" their Jeeps to withstand the punishment of these tougher trails.

Poison Spyder's origins took shape among these early rock-crawling pioneers. It was a company that was born of a need for innovative, armor-tough, high performance Jeep accessories that could handle the punishment being dished out by the latest hardcore trails from California to Colorado. Rock crawlers quickly discovered that while bumpers needed to be tough, they also needed to be tight to the Jeep, to keep from hanging up on obstacles. The result: gone are the fat tube full width bumpers, in favor of high clearance, low-drag bumpers made of tough steel plate. Gone are diamond-plate body panels, as those who really use their Jeeps found they not only grip the rocks but easily bend or tear. In their place are armor panels made of smooth, cold hard steel to both protect the Jeep's body and also allow it to slide over the rocks rather than hang up on them.

Many ideas that first took shape in Jeepers' garages were first commercially produced as a Poison Spyder product. The Tube Fender, upon which most of

the Jeep armor industry was based, first found commercial success as a Poison Spyder product. And many of our product brand names have almost reached generic-term status since they were first-to-market and the standard by which all competitors are judged. Crusher Corners, Rocker Knockers, Stingers, and the term "Comp Cut", for example, were all first coined by Poison Spyder, setting the pace for the rest of the industry to follow.

In 2009 Poison Spyder entered a new chapter when Larry and Cheri McRae bought the brand and set up shop in southern California. Since then, the McRae's have guided the company through further innovation and impressive growth. While continuing to service the legacy of the early Jeep Wranglers and CJ's the company was founded upon, the growing popularity of the JK Wrangler, and Poison Spyder's innovations to armor it, have fueled the company's rise from a niche manufacturer to an industry leader. It's products have continued to evolve, for example the venerable Tube Fender, originally pioneered by Poison Spyder, has since been replaced by the even tougher, better-looking all-plate DeFender product line.

The relentless pursuit of innovation drives Poison Spyder. The company is always looking for the latest development in manufacturing technology, the next step in the state of the art of Jeep armor design, the next great idea for bringing its products to the Jeep enthusiast community.



# PASSION, DETERMINATION AND **LARRY MCRAE**

Family man, businessman, off-roader, racer, entrepreneur, designer, American. All of these traits come together in Larry McRae, the president of Poison Spyder. For our employees, he's an inspiration. For our fans, he's an icon.

Larry's love of all things off-road and outdoors germinated at an early age, bouncing around in the back of the family 4X4 while exploring the mountains and deserts of California and the southwest. And once he was old enough for his father to let him take the wheel, he was hooked. From these roots grew a lifetime of exploring the backcountry, enjoying the freedom of the great outdoors, building lifelong friendships with his fellow off-road travelers, organizing clubs and events, cutting new trails, and eventually finding success in competitive rock crawling and desert racing. And during his free time he managed to grow several successful businesses, from real estate to construction.

This diverse wealth of experience and enthusiasm would culminate in Larry and his wife Cheri purchasing Poison Spyder Customs in 2009. If Larry is the passion behind Poison Spyder, Cheri is the strength behind the man. Together, they have turned Poison Spyder from a small producer of niche products to a household name in the Jeep and off-road aftermarket industry.

Under Larry's guidance, Poison Spyder has built a fan base upon admiration of the company's products. To this day Larry personally oversees product development, ensuring that the ultimate off-road enthusiast--Larry himself--gives each new Poison Spyder product its stamp of approval. As a company run by enthusiasts, Poison Spyder is able to keep its finger on the pulse of the off-road community, earning that community's respect while bringing it the products it wants. And speaking of the off-road community, Larry's favorite aspect of Poison Spyder is in traveling the country to off-road events, exploring new trails and off-road challenges, meeting other enthusiasts and spreading the word about Poison Spyder.

Larry recently won the ultimate battle, chalking up a win against oral cancer among his many accomplishments. With the tireless help of Cheri and thoughts and prayers from thousands of fans around the world, Larry has recovered and is back doing what he does best: helping design awesome Jeep products and touring the country on behalf of Poison Spyder. Seek him out at an event in your part of the country, chances are he'll be there, eager to hit your local trails and talk Jeeps around the campfire afterward.



# RELENTLESS PURSUIT OF QUALITY AND CRAFTSMANSHIP

A Poison Spyder Jeep is easy to pick out from a crowd. It is built for performance in the rocks and on the trail, with a simplicity of design that is both elegant and efficient. Absent are the post-apocalyptic looks of typical Jeep aftermarket parts, which are cluttered with unnecessary bulk and pointless design features. A Poison Spyder Jeep is built for the job at hand: getting through the toughest terrain with the least damage to both the Jeep and the terrain. And that simplicity of function and design elegance leads to a signature look that is unmistakably Poison Spyder.

Every Poison Spyder product is 3D CAD engineered using solid models of the Jeep right in the computer, to design as tight to the factory components as possible to maximize clearance. Bumpers and rocker armor use multi-faceted designs to coax as much clearance for the terrain, large tires, and suspension articulation as possible. Even something as simple as a recovery shackle tab is designed to work with each specific bumper with the least possible encroachment into the bumper's generous approach or departure angles.

The latest technologies flow from design to manufacturing, where all plate steel components are CNC laser cut and precision brake-formed on state-of-the-art equipment. Steel tubular components are made of high strength DOM structural tubing, CNC laser notched and CNC bent for accuracy and repeatability. These technologies allow something as simple as a stinger tube to have a complex notch where it joins a bumper shell, so that it can benefit from the strength of being welded to 2 or 3 separate planes on the bumper surface, rather than simply welded only to the top plate as the rest of the industry does. Laser notched and etched cage kits result in the most accurately designed, easiest to assemble cage on the market.

But the touch of real craftsmen is what finishes each Poison Spyder product. Highly skilled welders lay down Poison Spyder's signature stacked-dime welds, and each part is hand-finished for smooth surfaces, perfect edges and uniform corners. And all of this is done right in our Banning, California manufacturing facility, where we proudly slap Made In The U.S.A. stickers onto crates and pallets bound for Jeep enthusiasts all over the world.







# MOTORSPORTS PEDIGREE

While the weekend wheeler and rock crawler have been the inspiration for many of Poison Spyder's products, nothing exemplifies toughness better than motorsports and racing.

Starting in 2003, future Poison Spyder president Larry McRae would go on to win multiple championships as part of the winningest team in competitive rock crawling history. Larry's passion for putting the hammer down and going fast also found an outlet in the desert, racing to multiple Baja 1000 wins. The pinnacle of off-road motorsports competition – where the finesse, strategy and technical driving of hardcore rock crawling are combined with the high speed perils of open desert racing – would finally come together with the advent of King Of the Hammers and Ultra4.

Not content to merely enter the race, Poison Spyder has used it as the proving ground for many of its commercial products. In 2011, Poison Spyder took a stock Jeep Wrangler JK and in 17 days turned it into a

King of the Hammers racer. The following season the company built a racer from the ground up to compete in the new Modified class, with McRae guiding it to wins in the KOH Every Man Challenge, the grueling Vegas to Reno race, and eventually the season championship. In 2012, Larry entered the same car in the Unlimited Ultra4 class, finishing 11th in a race that saw only a handful of finishers from a field of about 150.

It was this commitment to “racing what we sell” that led to the creation of Crispy (named for the burned-out Jeep it was built on), which debuted at the 2014 King Of the Hammers. Crispy is a high performance Ultra4 racer built within a factory JK body and running off-the-shelf Poison Spyder parts. And that is ultimately why Poison Spyder races. Every Jeep built for racing, and every mile raced, helps make Poison Spyder products stronger, lighter, and better engineered for hardcore trail use.







## SpyderShell™ Armor Coat

Poison Spyder's SpyderShell™ Armor Coat has been engineered to provide your Poison Spyder product with years of unmatched great looks, corrosion protection and weather-resistance. Our proprietary 5-stage system starts with media blasting the entire part, to remove contaminants and prep the metal surface for the best possible adhesion. Next, any seams are sealed with 3M Scotch-Weld to block moisture from entering and causing corrosion where the powder can not reach. The first coat to be applied is a zinc-rich powdered black primer, which is baked on to form an impenetrable bond between the metal

product and the coating. The primer is black--rather than traditional gray--so that any rock chips or trail damage are less conspicuous. The final top coat is an industrial grade, "super-durable" architectural finish in semi-gloss black, which is engineered to retain its appearance through years of exposure to sun and weather. SpyderShell™ is a coating process unmatched by any other Jeep armor after-market manufacturer, for which we are confident in offering a 5-year warranty on materials and workmanship.



P1  
Black 20% Semi Gloss



## SpyderShell™ Armor Coat – Features

5-stage process to ensure quality, durability and great looks

Black semi-gloss super-durable top-coat

Architectural-grade outdoor coating to withstand years of exposure to the elements

Humidity tested – 1,000 hours of resistance with no loss of adhesion or blistering

Excellent resistance to most solvents, oils, acids and alkalies

5-Year warranty

Poison Spyder "Crispy" JK navigating tough terrain  
Trail: The Hammers, Johnson Valley California



# THE CLUSTER



Poison Spyder "Daddy Long Legs" LJ fully stretched  
Trail: Pritchett Canyon, Moab Utah



Poison Spyder "Papa Smurf" YJ conquering obstacles  
Trail: The Hammers, Johnson Valley California



Poison Spyder CJ Wheelin'  
Trail: The Hammers, Johnson Valley California



Poison Spyder "Venomous" Pushing the limits  
Trail: Pritchett Canyon, Moab Utah

# Bumpers - **BFH™** Built for **Hammers**

Poison Spyder BFH bumpers have been designed specifically for those hardcore Jeepers who value strength, simplicity and function. These bumpers were literally “Built For the Hammers” with the best ground clearance and tire clearance on the market. The small form factor and angled facets of the BFH bumper improve its ability to fit through or slide over the most technical trail obstacles. Each bumper is CNC laser-cut from a single piece of high strength 3/16-inch plate steel, then precision brake-formed for an exact fit. Some manufacturers have begun producing aluminum bumpers in order to “save weight”, but at a mere 35 pounds, the BFH front bumper is among the lightest bumpers on the market, and you sacrifice none of the strength or durability you would with an aluminum bumper.

## **For your Jeep:**

---

JK, TJ, YJ, CJ

**P.50**







# BFH™ - Front

Matches width of frame rails

Maximizes tire clearance and approach angle while minimizing weight

Four CNC laser notched DOM tube options

Customize the BFH bumper to fit your wheeling style: choose from Brawler Bar, Trail Stinger, Comp Stinger, or no bar

Trimmed frame rails (JK only)

Maximizes departure angle compared to the bulky, stock frame ends

Integrated winch mount

Just add a fairlead and mount your winch

Optional 1-inch thick CNC machined heavy duty, high clearance shackle tabs

Heavy duty recovery with no loss in approach angle

**For your Jeep:**

JK, TJ, YJ, CJ

P.50



# BFH™ - Rear

## One piece construction

Maximizes tire clearance and approach angle

## Matches tub width

Nothing hanging out to get caught on rocks, protects lower corners of Jeep's tub

## Trimmed frame rails (JK only)

Maximizes departure angle compared to the bulky, stock frame ends

## Optional 1-inch thick CNC machined heavy duty, high clearance shackle tabs

Heavy duty recovery with no loss in approach angle

## No spare tire carrier

Lower cost, less weight, no rattles



## For your Jeep:

JK, TJ, YJ, CJ

P.50

# RockBrawler™

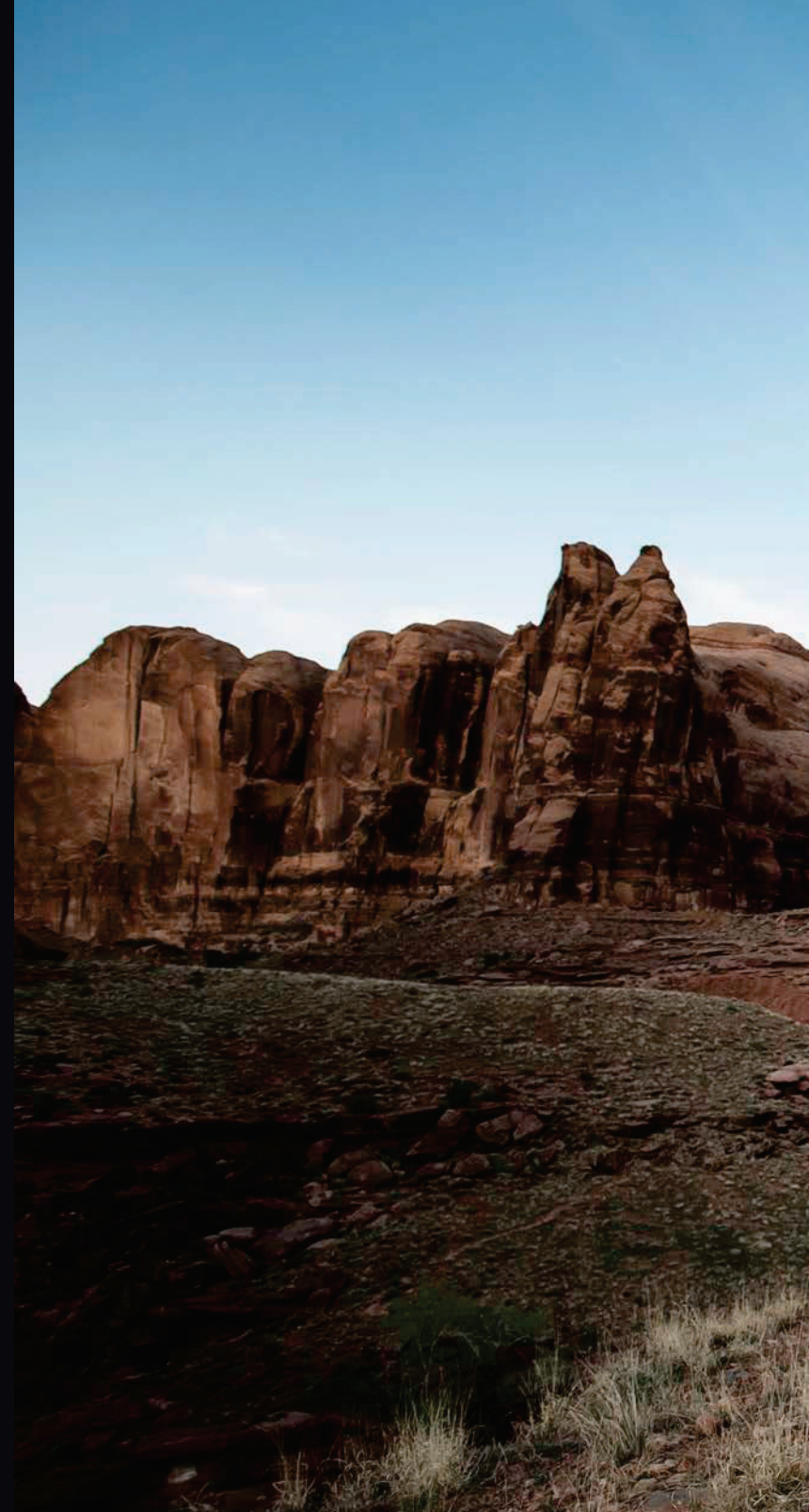
Poison Spyder RockBrawler bumpers are perfect for the Jeep owner that is looking for more coverage and features than our minimalist BFH line. These bumpers look great on daily driven Jeeps yet can withstand trail abuse that would fold other brands in half. RockBrawler bumpers are specifically designed to maximize protection while providing clearance for big tires from the angled facets that prevent rubbing, even at full suspension articulation or full lock of the wheel. Features include D-ring recovery shackle tabs, winch compatibility, recessed light mounts, receiver hitches, and spare tire carriers. All with the same bombproof construction that Poison Spyder is famous for. Every RockBrawler bumper starts as a piece of 3/16-inch thick high pressure steel plate that is then CNC laser cut and brake formed to perfectly fit your Jeep.

## For your Jeep:

---

|    |                      |
|----|----------------------|
| JK | <a href="#">P.52</a> |
| TJ | <a href="#">P.54</a> |

---





# RockBrawler™ Front

Brawler Bar, Stinger, or bare top

Customize your grill protection

Choose Brawler Lite, Brawler  
MID or Brawler Full Width

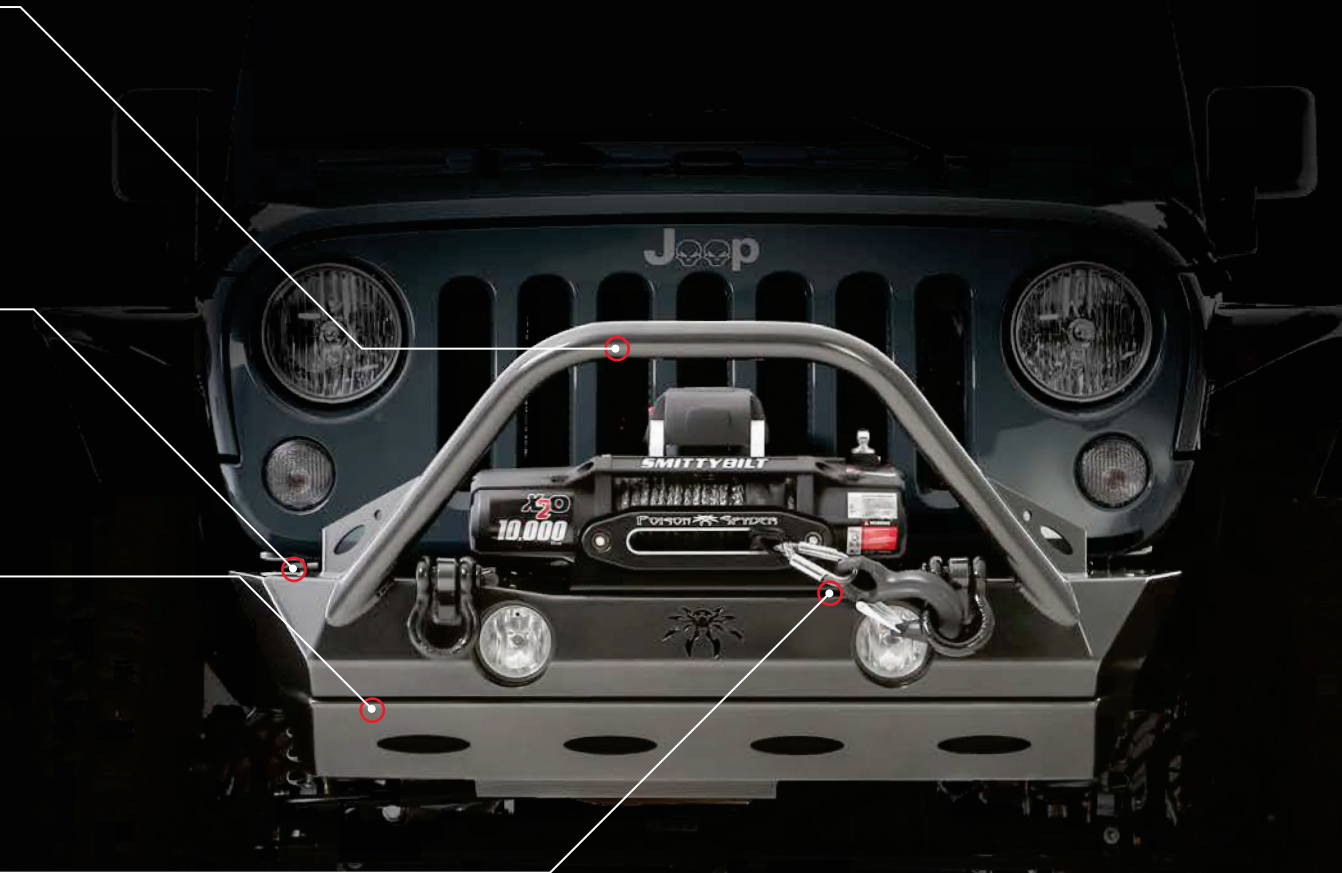
Various widths to match your driving style  
and protection needs

Optional skidplate

Protect your electronic sway bar motor  
or keep it bare for optimum ground clearance

Integrated winch mount

Fits most winches up to 15,000 lbs  
(fairlead mount sold separately)



**For your Jeep:**

|    |      |
|----|------|
| JK | P.52 |
| TJ | P.54 |

# RockBrawler™ Rear

Choose from Standard Width  
or Full Width

Your choice to maximize either protection or  
clearance to match your driving style

Ingenious RockBrawler II  
Tire Carrier mechanism

Conveniently opens and closes with the  
tailgate with no extra steps

Integrated receiver hitch

Frenched into bumper to optimize ground clearance

Optional 1-inch thick shackle mounts

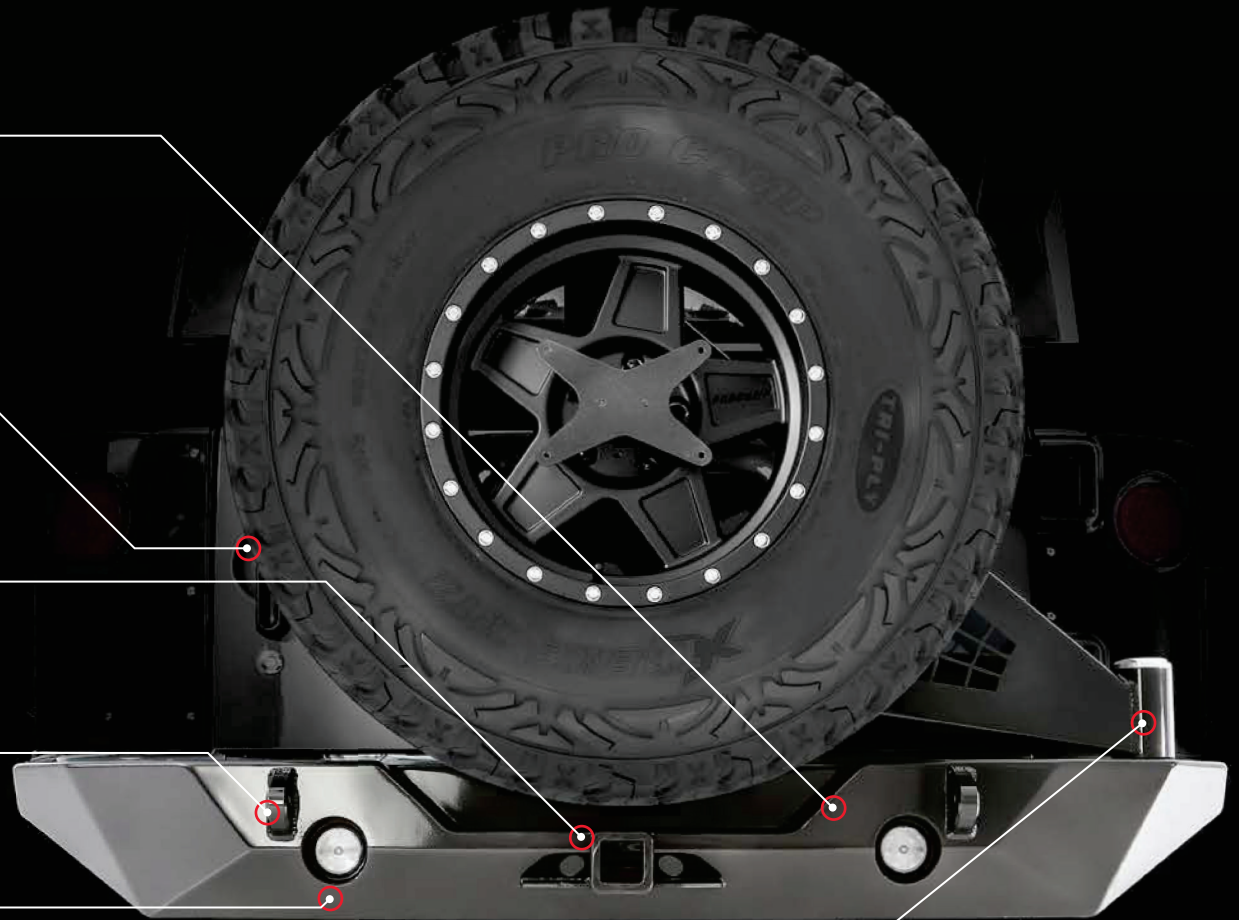
Strong recovery points to get you unstuck

Bolt-on installation

No cutting of the frame rails required

Heavy duty spindle and tapered  
roller bearing pivot unit

Smooth rattle-free spare tire carrier with  
plenty of capacity for oversize tires



## For your Jeep:

|    |      |
|----|------|
| JK | P.52 |
| TJ | P.54 |

# JK Body Mounted Tire Carrier

1-1/2-inch DOM tubing and  
3/16-inch steel plate construction

Heavy duty laser cut construction offers  
unsurpassed strength

Cam-adjustable tire mount

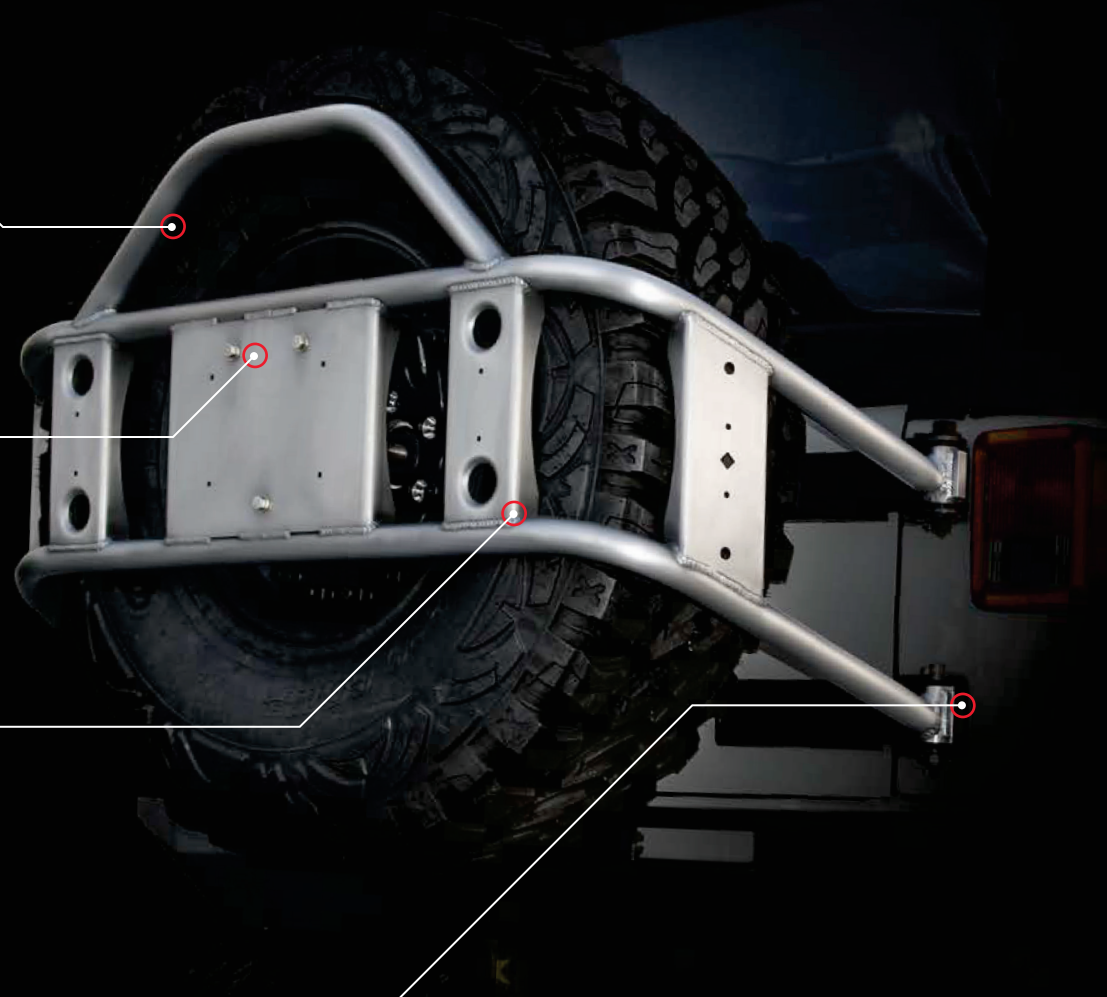
Accommodates up to 40-inch tire and easily  
opens with one hand

Multiple mounting points

Room to add Rotopax fluid carriers and a  
Hi-Lift jack

Internal brackets tie into heavy  
gauge internal body tub structure

Much stronger than simply bolting to the  
Jeep's flimsy outer sheet metal



**For your Jeep:**

JK

P.57



# TJ Rear Stinger Tire Carrier

CNC-bent 1-3/4-inch .120 wall  
DOM tubing stinger

Perfect fitment and dent resistance

License plate mount

Keeps your Jeep legal

3-Way spare tire strap

Snugly fits any size tire

Optional lower mounting plate

Replaces rear bumper for even greater strength



**For your Jeep:**

TJ

P.57

# Crusher™ Flares

When dealing with rocks, you can either be crushed, or be the one doing the crushing. Poison Spyder Crusher Flares are precision roll-formed to conform perfectly to the body lines of your Jeep. Options abound with front and rear Crusher Flares, from flare width and style to steel or aluminum construction. This allows you to customize your Jeep with the products that are a perfect fit for your specific use.

Poison Spyder Crusher Flares are constructed using 1.5-inch X .120 wall DOM (Drawn-Over-Mandrel) structural steel or 1.5-inch X .188 wall aluminum tubing as the outer "rub rail". This tubing provides better resistance to crushing, kinking, and bending than competitors' flares made with thinner wall, welded seam tubing. Lightweight aluminum Crusher Flares weigh under 12 pounds, nearly two thirds less than the bombproof steel Crusher Flares.

Both material options benefit from tying the Crusher flares into the heavy gauge steel of your Jeep's inner tube structure, not just the external sheetmetal. This Poison Spyder exclusive allows our flares to withstand bigger hits than anything else on the market and laugh off damage.

## For your Jeep:

---

JK

P.58

---





# Crusher™ Flares – Front

## Three width options

Narrow, standard or extra wide tire coverage

## Inner bracing

Increased strength to resist trail damage

## Inner fender options

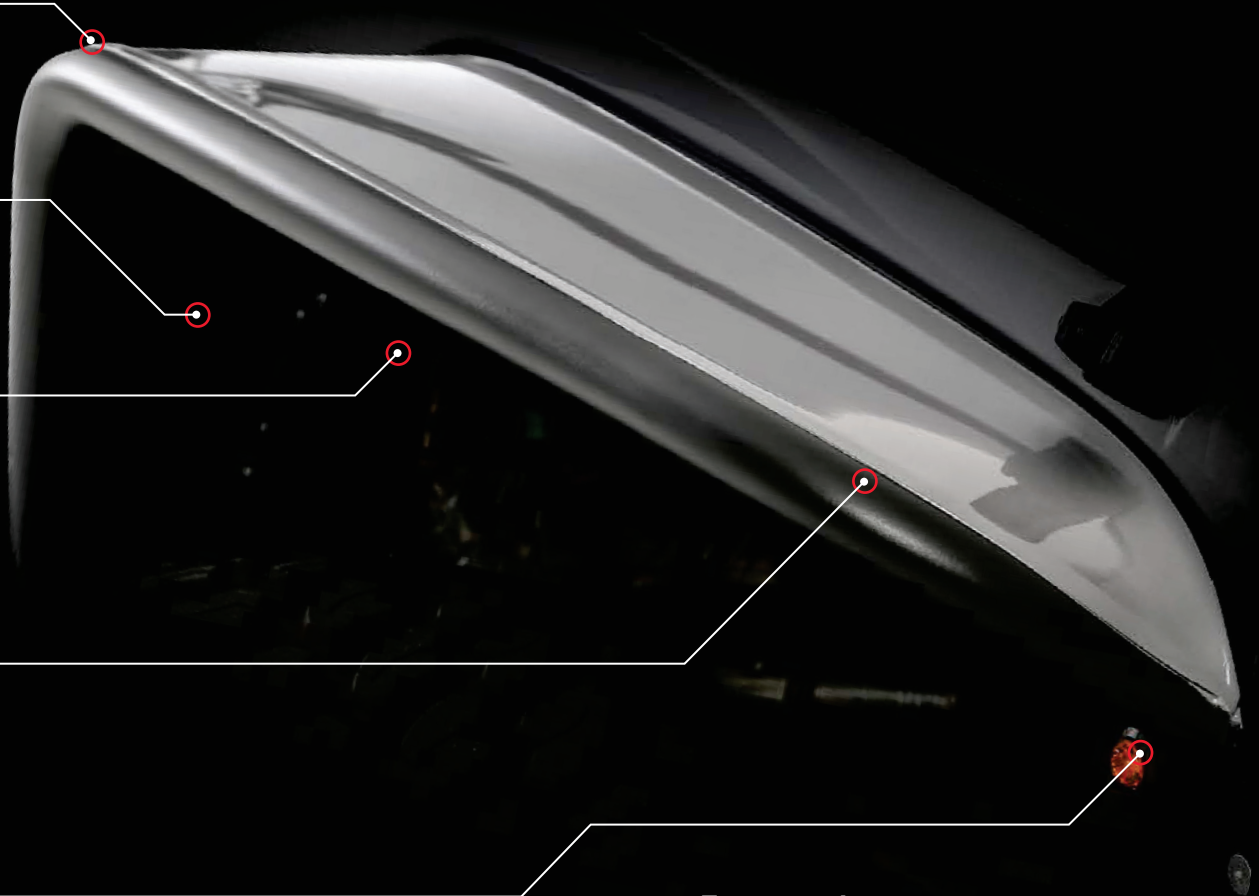
Compatible with aluminum Poison Spyder JK Inner Fenders, factory inners, or use without inner fenders

## CNC roll-bent tubes

Perfectly match the subtle curves of the Jeep's body lines

## LED compatible

Subtle, low profile lighting to keep you street legal



## For your Jeep:

JK

P.58

# Crusher™ Flares – Rear

## Various widths available

Fit your specific style and required tire coverage

## Bolt-on mounting

Full mounting plate, not just tabs

## Steel or aluminum

Your choice of lightweight or ultimate strength

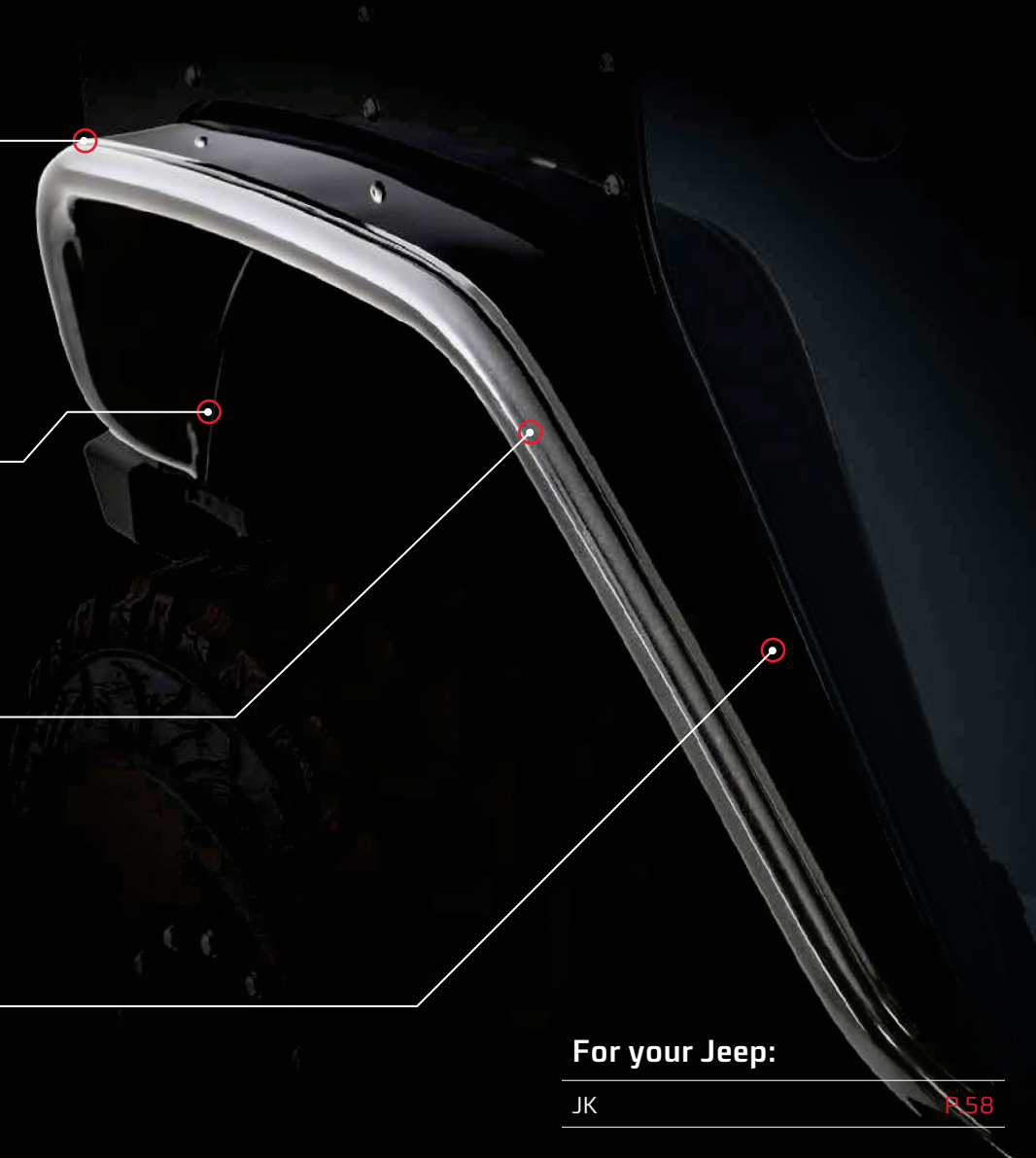
## Premium rubber liners

Prevent rattles and gaps between the fender and body

## For your Jeep:

JK

P 58





# DeFenders™

Poison Spyder pioneered the tube fender revolution nearly two decades ago, and most Jeep armor manufacturers are still stuck in the past with this out-dated concept. But the state of the art in Jeep fender armor has taken a giant leap forward with Poison Spyder's revolutionary DeFender product line. Rather than tube, the outer edges of the DeFender are brake-formed into a rugged 3-sided rub rail. Most "tube fenders" use tubing less than 1/8-inch thick as the outer edge rub rail. Compare that to the 3/16 thick material of the DeFender which is carried throughout its structure, from the outer rub rail surface to the top plates to the mounting structure. Front and rear DeFenders are not only much stronger than tube fenders, they look much better as well, with smooth flat surfaces that blend better with your Jeep's exterior appearance. Options abound, with various widths available front and rear to match your tire clearance and visibility needs, and different sized wheel openings to maximize ground clearance.

## For your Jeep:

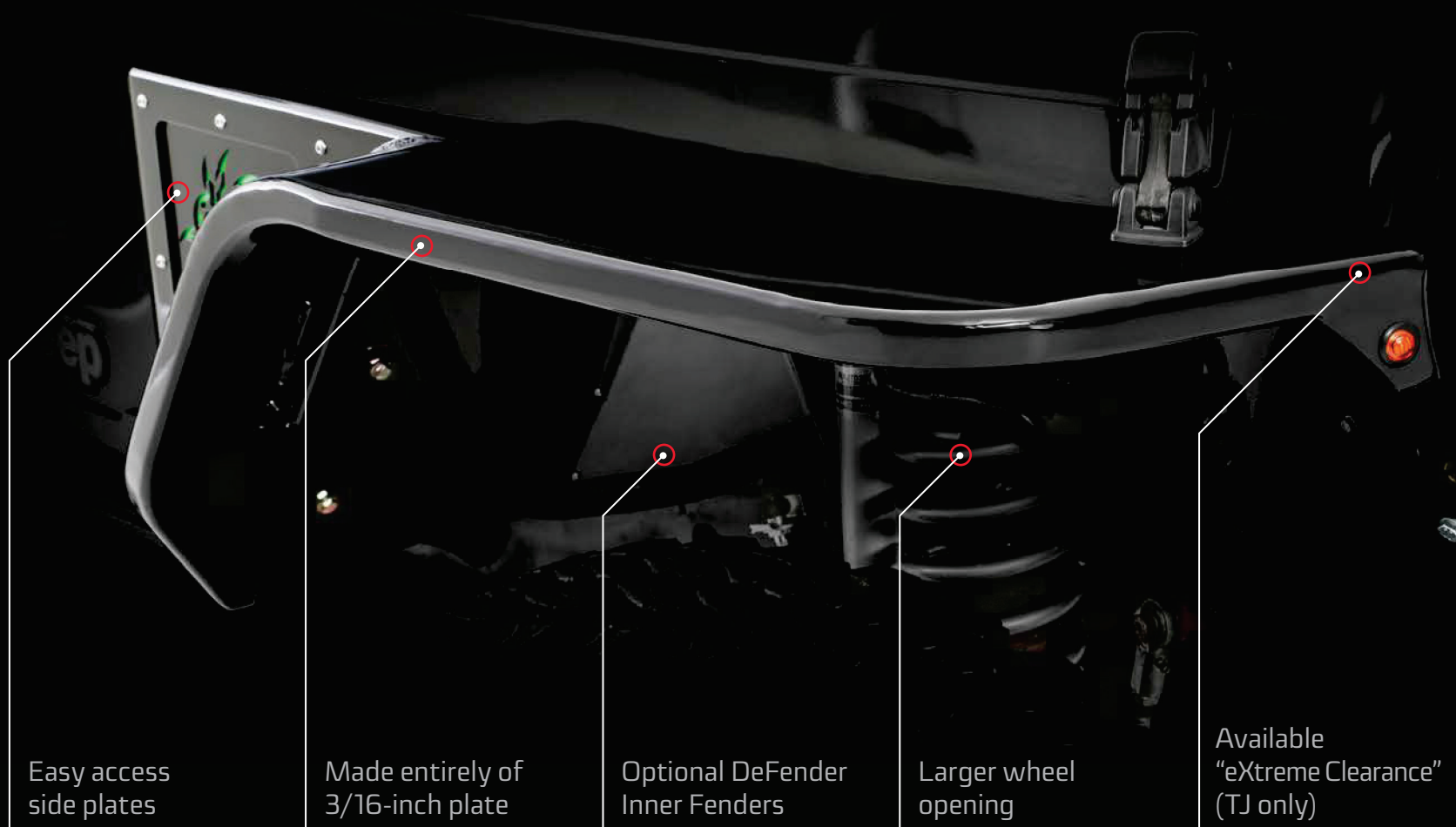
---

TJ, VJ

P. 59-62

---

# DeFenders™



Easy access side plates

Side plates ease installation. Optional "Spyder Side Inserts" improve airflow for better under-hood cooling

Made entirely of 3/16-inch plate

Heavy duty steel or light weight aluminum. 3/16-inch plate armor far surpasses the strength of traditional Tube Fenders

Optional DeFender Inner Fenders

Retain factory inner fenders, delete them, or choose from our solid or vented DeFender Inner Fenders

Larger wheel opening

Up to 2-1/2-inches larger wheel opening than typical tube fenders, and 4-inches larger than stock Jeep flares to avoid tire rub at full steering lock

Available "eXtreme Clearance" (TJ only)

Provide maximum tire clearance by raising the top-line of the DeFender and gaining an extra 3-inches for larger tires and increased suspension articulation



# Brawler™ Rockers

Poison Spyder's Brawler Rockers use a distinctive "mini boatside" profile that maximizes ground clearance while providing unmatched rocker protection for your Jeep. Brawler Rockers use a two-piece design, with the upper section conforming the subtle curvature of your JK's body, similar to our JK Body Armor. The Brawler Rocker adds a second section that protrudes 3 1/4-inch from your Jeep's body to fend off obstacles and act as a rub rail and entry step. This second piece is angled to maximize ground clearance and integrates perfectly with our JK Crusher Flares. Oval lightning holes along the length of the boatside section provide great Poison Spyder looks while allowing access to hose out mud and debris after a day on the trail, and beefy 3/16-inch thick internal gussets provide ultimate strength to withstand the biggest impacts without deformation.

## For your Jeep:

---

JK

P.63



# Brawler™ Rockers

CNC-laser cut and precision  
bake-formed

Perfect fit to your Jeep's tub

3/16-inch thick steel or  
aluminum construction

Your choice of lightweight or maximum strength

3/16-inch internal gussets

Provide increased strength with no loss of  
ground clearance

Stainless steel hardware

Never worry about rust





## Rocker **Knockers**<sup>TM</sup>

The most vulnerable areas on the body of the Jeep JK are the rocker panels, and especially with the long wheelbase of the 4-doors. Poison Spyder JK Rocker Knockers protect Jeep's rocker panels while providing a heavy duty slider to help the Jeep glide over rocks and pivot around tight obstacles. Poison Spyder JK Rocker Knockers come in two versions: either Body Mounted or Frame Mounted. The Body Mounted Rocker Knockers attach to the structural members of the Jeep's body tub in 14 strategic bolt locations for strength, while tucking up as close to the body as possible for maximum ground clearance regardless of the presence of a body lift. Frame-mounted

rocker knockers use heavy duty triangulated outriggers, bolted right to the Jeep's frame for unmatched strength and impact resistance. Both versions feature heavy duty construction, CNC laser cutting, precision brake forming, and heavy duty DOM tubing for a perfect fit and longevity. Poison Spyder's exclusive oval dimples are used on the Slider Skid for structural strength as well as the great looks you have come to expect from Poison Spyder. The slider and skid mount at an angle to the main tube of the Rocker Knocker to provide boatside-like protection from the rocks while keeping the Jeep's doors and body a safe distance from higher level trail hazards.

### **For your Jeep:**

---

JK, TJ

[P.64](#)

---

LJ, YJ, CJ

[P.65](#)



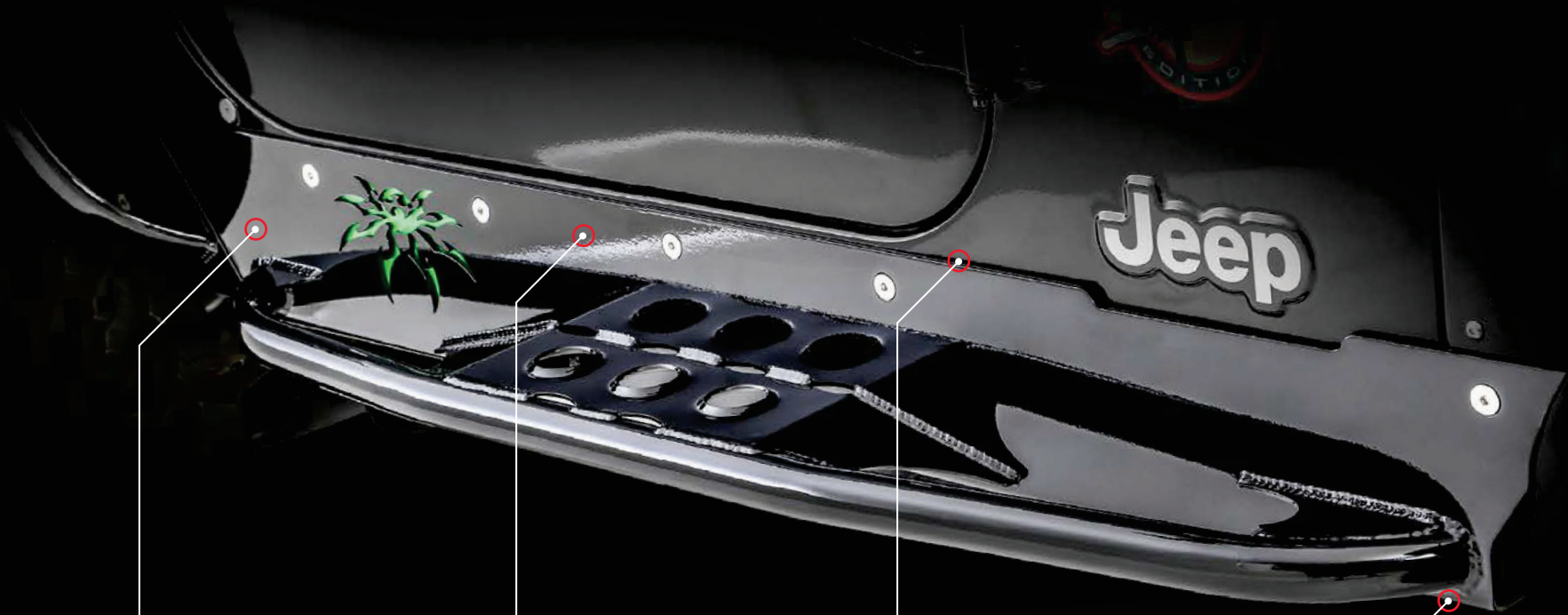
POLYARD  
OFF-ROAD

TERAFLEX

TERAFLEX

XTREME MT2  
PRO COMP

# Ricochet **Rockers**™



5-inch dimpled plate

Acts as a step with excellent traction

Mount directly to your Jeep tub

No gap or misalignment when used with a body lift

Optional Rubber Rocker Liners

Vibration absorption and paint protection

Mounts to tub body mounts

Exceptional strength with no loss of ground clearance



## Ricochet **Rockers**™

Poison Spyder Ricochet Rockers are similar to our famed Rocker Klocker, with the added utility of a combination 5-inch step and slider. This rocker protection is the pinnacle of hardcore body armor protection, style and convenience. The foundation of Poison Spyder Ricochet Rockers is CNC laser cut, high strength 3/16-inch plate steel armor. The dual tube support

and slider bar is constructed of 1.5-inch DOM tubing, the step and corner gussets are CNC laser cut from 1/8-inch steel plate, and brake-formed to act as their own gusset for strength and a clean appearance. Everything is professionally welded and comes to you ready to paint and bolt-on with the included 3/8-inch stainless countersunk hardware.

### **For your Jeep:**

---

JK, TJ, LJ, YJ, CJ

**P.66**



# JK Crusher™ Corners

Precision tool-formed from 1/8-inch plate steel then cut on a 5-axis CNC laser cutter, Poison Spyder Crusher Corners fit the compound curves of your Jeep JK like a glove, to provide trail protection without sacrificing clearance or unnecessary weight or snag points. Crusher Corners offer full coverage, extending from the rear tailgate, around the side, over the wheel openings and all the way to the door openings of your Jeep. Crusher Corners may be used with the stock JK fender flares or with our Rear Crusher Flares for the ultimate combination of rear corner armor. JK Crusher Corners come in a complete kit with stainless steel button head hardware. Installation requires drilling into the Jeep's body panels and installing threaded nut-serts.

## For your Jeep:

|            |      |
|------------|------|
| JK         | P.68 |
| TJ         | P.69 |
| LJ, YJ, CJ | P.70 |

# JK Crusher™ Corners



Button-head stainless steel hardware

Great looks, corrosion resistant, and a rounded surface to slide past obstacles

Available for two- and four-door JKs

Whatever your drive, we have the parts you need

Die-formed for a precise fit

The only full corner armor on the market that hugs the curves of your Jeep JK to fit like a glove

Four tail light options

Factory, LED Tail Lights. LED Tail and Reverse Lights, or blank, it is your choice







# Tramp Stamp™ and TrailGate™

The introduction of the Wrangler in 1987 brought many changes, one of which was the replacement of the CJs' tailgate with a rear hatch that opened to the side. The Poison Spyder TrailGate replaces your Jeep's heavy, cumbersome swing-out tailgate with a lightweight, sleek, aluminum drop-down gate and Tramp Stamp. Use it as a convenient seat at outdoor events, or as a lunch prep table for those stops along the trail. It even works great as a temporary work bench for performing trail repairs. The complete TrailGate kit includes the heavy duty, CNC laser cut aluminum TrailGate panel, lower Tramp Stamp piece, heavy duty hinges, locking flush-mount latches, limiting cables, brackets, weatherstripping and hardware.

For TJ, YJ and CJ, the stand-alone Tramp Stamp completes the Poison Spyder armor at the rear of your Jeep, integrating perfectly with Poison Spyder Crusher Corners or Trail Corners. For JK, the Tramp Stamp takes the form of a stylish trim panel for covering the factory tire mount holes on JK's where the spare tire has been removed or relocated. Related accessories provide for relocating the license plate to the center of the tailgate, and mounting your CB antenna.

## For your Jeep:

---

|    |                      |
|----|----------------------|
| JK | <a href="#">P.72</a> |
|----|----------------------|

---

|            |                      |
|------------|----------------------|
| TJ, YJ, CJ | <a href="#">P.73</a> |
|------------|----------------------|

---

# Hood Louvers

Many of the problems Jeeps encounter when crawling over rocks are due to overheating. At slow speeds there simply isn't enough airflow through the engine compartment to keep things cool. Worse, engine compartments on most vehicles are poorly vented, with no way for hot air to escape from the engine bay. Poison Spyder's Hood Louvers solve that problem by promoting proper airflow through and out of the engine compartment, while adding great looks to your Jeep.

Poison Spyder Hood Louvers are crafted from quality, thick gauge aluminum sheet. They are CNC laser-cut and precision die-stamped. Aluminum construction makes the hood louver both light weight and corrosion resistant. In addition to improved cooling performance, Poison Spyder Hood Louvers add great looks to your Jeep! The Poison Spyder Hood Louver looks great on any Jeep, whether it is painted to match the body color or powder coated a contrasting color. For convenience, it is available either bare or powder coated black. Stainless steel fasteners are supplied, as well as a full-size template with instructions for cutting the airflow holes in the hood. Because it is a one-piece design, specific for each model Jeep, installation is a quick and easy.

## For your Jeep:

JK, TJ, YJ, CJ

P.80







POISON SPYDES

Jeep

WV-123456789



# Lazer-Fit™

## Full Cage Kits

The Poison Spyder Full Cage Kit is a complete, weld-in cage designed for maximum safety, functionality, and unmistakable Poison Spyder style. Available for most Jeep Wrangler models, Poison Spyder's exclusive Lazer-Fit system ensures precise fit and easy installation. And our Full Cage Kit comes with every piece of tubing or plate steel component you need to assemble a complete Poison Spyder Full Cage. Options include entry grab handles, seatbelt bungs, jack mounts, and more to customize the cage to your specific needs.

The Lazer-Fit system starts with a 3D CAD design using an actual 3D model of the specific vehicle to ensure the best fit and use of space. Tubular components are made of high strength structural DOM tubing that is laser-cut, laser-notched and laser-etched to exact tolerances. Then tube pieces are CNC bent for a quality-assured, precise fit. YJ, TJ and LJ versions of the Full Cage Kit incorporate Poison Spyder's proprietary Lower A-Pillars. The Lower A-Pillar is engineered to provide a strong foundation for the forward section of the cage while not intruding into the dash or compromising legroom. Lazer-Fit technology results in a kit of tubes that match and fit each other perfectly, with no need for grinding, notching, fitting or cussing. Components are also etched with part identification marks to take all the guesswork out of assembling your cage. As a result, Lazer-Fit cuts the assembly time in half compared to competitors' cage kits.

### Cages for your Jeep:

---

|                        |         |
|------------------------|---------|
| Trail Cages JK, TJ, YJ | P.74-75 |
|------------------------|---------|

---

|                                 |      |
|---------------------------------|------|
| Lazer-Fit™ Cages TJ, YJ, LJ, CJ | P.76 |
|---------------------------------|------|

---

# Bombshell™

## Diff Covers

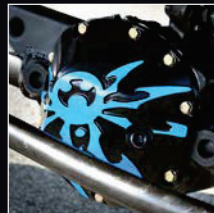
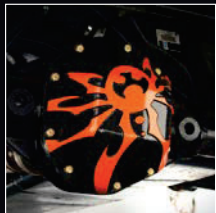
Poison Spyder Bombshell Diff Covers are designed to protect your expensive axle components from rocks and other unforgiving obstacles. Think of them as an insurance policy for your gears and lockers. Available for both factory and swapped in axles, the Bombshell is cast from high ductile iron and then the sealing surface is machined flat for a perfect, leak-free seal. Whether you have a Dana 30 or Dana 44 axle, the design of the Bombshell incorporates recesses to protect the diff cover bolt heads from trail damage, while the profile of the Bombshell acts as a ramp to help slide your Jeep up and over the most troublesome obstacles. The covers are shipped bare so that you may powder coat or paint to suit your own preference, or are available in semi-gloss black powdercoat. Each Bombshell diff cover comes in a complete kit with Grade 8 hardware, a flush-mount fill plug, and silicon sealant to complete the installation.

### For your Jeep:

Dana 30 / Dana 44

[P.78](#)

### Customize your own:





Rock Armor  
WSPC  
Rock Krawler  
BFGoodrich  
VENOMOUS  
WARN  
RIGID INDUSTRIES  
MAGNACHROME

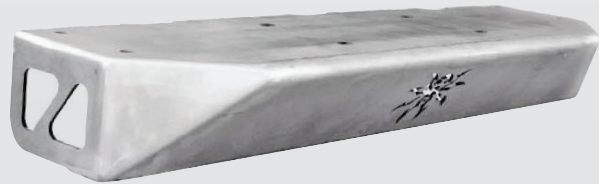
SPYDER

ROCK

# Bumpers

# Built For the Hammers - BFH™

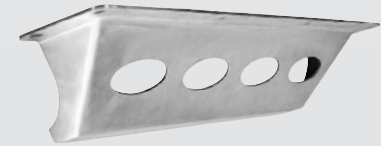
## Options



Front Bumper



Front Bumper w/ Brawler Bar



Front Skid (JK only)



Rear Bumper



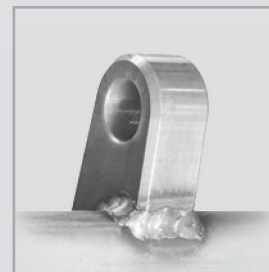
Front Bumper w/ Trail Stinger



Front Bumper w/ Comp Stinger



Rear Crossmember



Tabs for Front and Rear Bumper



# Bumpers

# Built For the Hammers - BFH™

|    | Product Description                              | Part Number  |
|----|--|--------------|
| JK | JK BFH Front Bumper                              | 17-16-020    |
|    | JK BFH Front Bumper - Brawler Bar                | 17-16-020-B  |
|    | JK BFH Front Bumper - Comp Stinger               | 17-16-020-C  |
|    | JK BFH Front Bumper - Tabs                       | 17-16-020-D  |
|    | JK BFH Front Bumper - Brawler Bar - Tabs         | 17-16-020-DB |
|    | JK BFH Front Bumper - Comp Stinger - Tabs        | 17-16-020-DC |
|    | JK BFH Front Bumper - Trail Stinger - Tabs       | 17-16-020-DS |
|    | JK BFH Front Bumper - Trail Stinger              | 17-16-020-S  |
|    | JK BFH Disco Skid '07-'11                        | 17-16-030    |
|    | JK BFH II Rear Crossmember                       | 17-17-010    |
|    | JK BFH II Rear Bumper - Tabs                     | 17-17-021-D  |
|    | JK BFH II Rear Bumper - Tabs - Lights            | 17-17-021-DL |
|    | JK BFH II Rear Crossmember - Receiver            | 17-17-030    |
|    | JK BFH II Rear Bumper - Receiver - Tabs          | 17-17-040-D  |
|    | JK BFH II Rear Bumper - Receiver - Tabs - Lights | 17-17-040-DL |

|    | Product Description                        | Part Number  |
|----|--|--------------|
| YJ | YJ BFH Front Bumper                        | 13-16-020    |
|    | YJ BFH Front Bumper - Brawler Bar          | 13-16-020-B  |
|    | YJ BFH Front Bumper - Comp Stinger         | 13-16-020-C  |
|    | YJ BFH Front Bumper - Tabs                 | 13-16-020-D  |
|    | YJ BFH Front Bumper - Brawler Bar - Tabs   | 13-16-020-DB |
|    | YJ BFH Front Bumper - Comp Stinger - Tabs  | 13-16-020-DC |
|    | YJ BFH Front Bumper - Trail Stinger - Tabs | 13-16-020-DS |
|    | YJ BFH Front Bumper - Trail Stinger        | 13-16-020-S  |

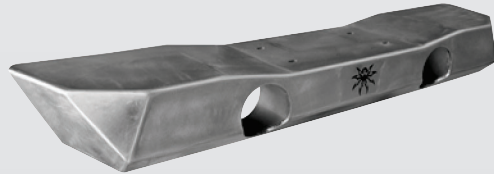
|    | Product Description                        | Part Number  |
|----|--|--------------|
| TJ | TJ BFH Front Bumper                        | 14-16-020    |
|    | TJ BFH Front Bumper - Brawler Bar          | 14-16-020-B  |
|    | TJ BFH Front Bumper - Comp Stinger         | 14-16-020-C  |
|    | TJ BFH Front Bumper - Tabs                 | 14-16-020-D  |
|    | TJ BFH Front Bumper - Brawler Bar - Tabs   | 14-16-020-DB |
|    | TJ BFH Front Bumper - Comp Stinger - Tabs  | 14-16-020-DC |
|    | TJ BFH Front Bumper - Trail Stinger - Tabs | 14-16-020-DS |
|    | TJ BFH Front Bumper - Trail Stinger        | 14-16-020-S  |
|    | TJ BFH II Rear Bumper - Standard - Tabs    | 14-61-030    |
|    | TJ Rear Bumper Brace Kit                   | 14-61-710    |

|    | Product Description                        | Part Number  |
|----|--|--------------|
| CJ | CJ BFH Front Bumper                        | 11-16-020    |
|    | CJ BFH Front Bumper - Brawler Bar          | 11-16-020-B  |
|    | CJ BFH Front Bumper - Comp Stinger         | 11-16-020-C  |
|    | CJ BFH Front Bumper - Tabs                 | 11-16-020-D  |
|    | CJ BFH Front Bumper - Brawler Bar - Tabs   | 11-16-020-DB |
|    | CJ BFH Front Bumper - Comp Stinger - Tabs  | 11-16-020-DC |
|    | CJ BFH Front Bumper - Trail Stinger - Tabs | 11-16-020-DS |
|    | CJ BFH Front Bumper - Trail Stinger        | 11-16-020-S  |



# Bumpers

## RockBrawler™ – Front

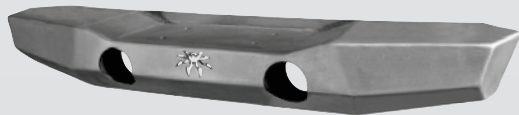
### Brawler™ Lite Front





JK

| Product Description   | Part Number   |
|---|---------------|
| JK Brawler Lite Front Bumper  | 17-59-010     |
| JK Brawler Lite Front Bumper - Brawler Bar - Plate Gussets  | 17-59-010-B   |
| JK Brawler Lite Front Bumper - Brawler Bar - Tube Gussets   | 17-59-010-BT  |
| JK Brawler Lite Front Bumper - Tabs   | 17-59-010-D   |
| JK Brawler Lite Front Bumper - Brawler Bar - Plate Gussets - Tabs  | 17-59-010-DB  |
| JK Brawler Lite Front Bumper - Brawler Bar - Tube Gussets - Tabs  | 17-59-010-DBT |
| JK Brawler Lite Front Bumper - Trail Stinger - Tabs   | 17-59-010-DST |
| JK Brawler Lite Front Bumper - Trail Stinger  | 17-59-010-ST  |
| JK Brawler Lite Front Skid   | 17-59-030     |

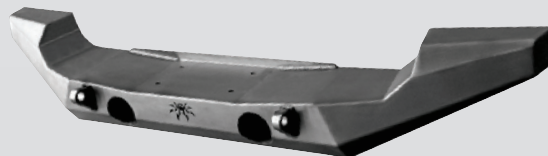
### Brawler™ Mid Front



JK

| Product Description  | Part Number   |
|--|---------------|
| JK Brawler MID Front Bumper  | 17-63-010     |
| JK Brawler MID Front Bumper - Brawler Bar  | 17-63-010-BT  |
| JK Brawler MID Front Bumper - Tabs   | 17-63-010-D   |
| JK Brawler MID Front Bumper - Brawler Bar - Tabs  | 17-63-010-DBT |
| JK Brawler MID Front Skid                         | 17-63-030     |

### Brawler™ Full Width Front



JK

| Product Description                                     | Part Number   |
|---|---------------|
| JK Brawler FULL Width Front Bumper - Tabs               | 17-64-020-D   |
| JK Brawler FULL Width Front Bumper - Brawler Bar - Tabs | 17-64-020-DBT |

# Bumpers

# RockBrawler™ – Front

Options (shown on Brawler Lite)



Brawler Bar (shown with tube gussets)



Trail Stinger (shown with tube gussets)



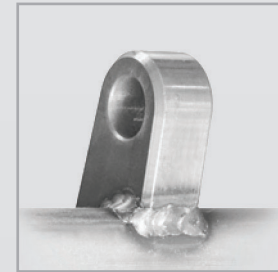
Front Skid



Plate Gussets



Tube Gussets

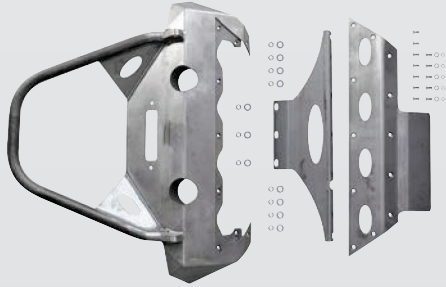


Tabs

# Bumpers

# RockBrawler™ – Front

## JK RockBrawler™ Front



|    | Product Description         | Part Number |
|----|-----------------------------|-------------|
| JK | JK RockBrawler Front Bumper | 17-60-010   |

## TJ RockBrawler™ Front

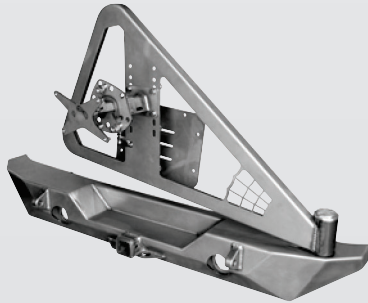




|    | Product Description                              | Part Number  |
|----|--|--------------|
|    | TJ RockBrawler Front Bumper                      | 14-59-010    |
| TJ | TJ RockBrawler Front Bumper - Brawler Bar        | 14-59-010-B  |
|    | TJ RockBrawler Front Bumper - Tabs               | 14-59-010-D  |
|    | TJ RockBrawler Front Bumper - Brawler Bar - Tabs | 14-59-010-DB |

# Bumpers

## RockBrawler™ – Rear

### JK RockBrawler™ II Rear



|    | Product Description                                    | Part Number   |
|----|--|---|
| JK | JK RockBrawler II Rear Bumper - Tabs                   |  17-62-010 |
|    | JK RockBrawler II Rear Bumper with Tire Carrier - Tabs |  17-62-020 |

### JK RockBrawler™ Full Width Rear



|    | Product Description  | Part Number  |
|----|--|--------------|
| JK | JK RockBrawler FULL Width Rear Bumper - Tabs                         | 17-62-040-D  |
|    | JK RockBrawler FULL Width Rear Bumper - Lights - Tabs                | 17-62-040-DL |
|    | JK RockBrawler FULL Width Rear Bumper - Tire Carrier - Tabs          | 17-62-050-D  |
|    | JK RockBrawler FULL Width Rear Bumper - Tire Carrier - Lights - Tabs | 17-62-050-DL |

### TJ RockBrawler™ Rear



|    | Product Description                                 | Part Number |
|----|---|-------------|
| TJ | TJ RockBrawler Rear Bumper                          | 14-61-010   |
|    | TJ RockBrawler Rear Bumper - Tabs                   | 14-61-010-D |
|    | TJ RockBrawler Rear Bumper with Tire Carrier        | 14-61-020   |
|    | TJ RockBrawler Rear Bumper with Tire Carrier - Tabs | 14-61-020-D |

 AVAILABLE WITH SPYDERSHELL™ ARMOR COAT

# Bumpers

# RockBrawler™ – Rear

## RockBrawler™ I – Rear



|    | Product Description               | Part Number |
|----|-----------------------------------|-------------|
| JK | JK RockBrawler Rear Bumper        | 17-61-010   |
|    | JK RockBrawler Rear Bumper - Tabs | 17-61-010-D |

## Rear Bumper Options



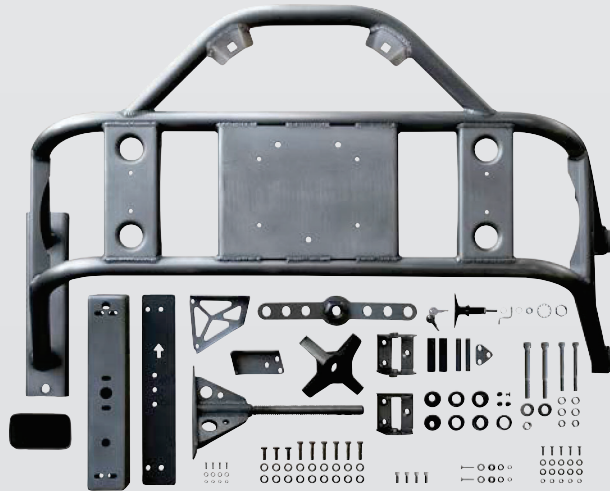
| Product Description            | Part Number |
|--------------------------------|-------------|
| RockBrawler Hi-Lift Jack Mount | 45-61-010   |



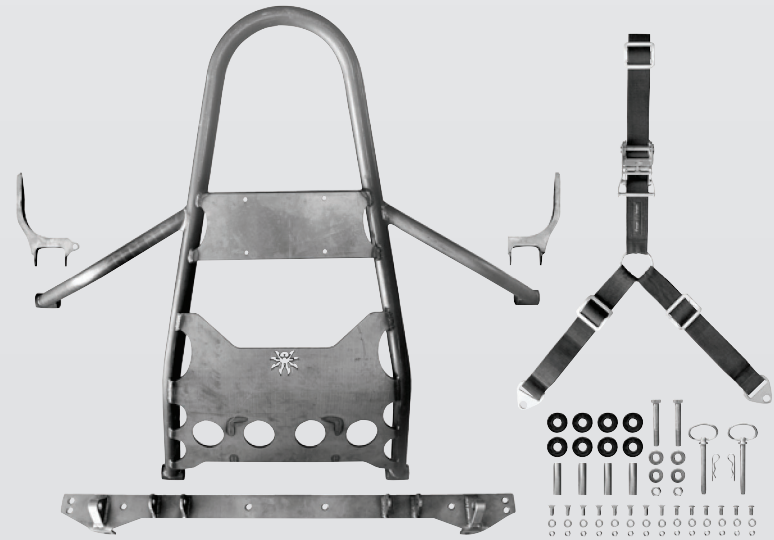
| Product Description               | Part Number |
|-----------------------------------|-------------|
| RockBrawler II Hi-Lift Jack Mount | 45-61-011   |

# Tire Carriers

# Stinger Tire Carriers



|    | Product Description          | Part Number |
|----|------------------------------|-------------|
| JK | JK Body Mounted Tire Carrier | 17-13-010   |



|    | Product Description                            | Part Number |
|----|--|-------------|
| TJ | DIY Rear Stinger Tire Carrier                  | 14-13-010   |
|    | TJ Rear Stinger Tire Carrier - No Body Lift    | 14-13-020   |
|    | TJ Rear Stinger Tire Carrier - 1" Body Lift    | 14-13-021   |
|    | TJ Rear Stinger Tire Carrier - 1.25" Body Lift | 14-13-022   |
|    | TJ Rear Stinger Tire Carrier - 2" Body Lift    | 14-13-023   |


# Flares / Fenders

# JK Crusher™ Flares

## Crusher™ Flares - Front



Standard width shown.

|    | Product Description                                 | Part Number   |
|----|---|---|
| JK | JK Front Crusher Flares - Standard Width (Steel)    |  17-03-030 |
|    | JK Front Crusher Flares - Standard Width (Aluminum) | 17-03-030-ALUM  |
|    | JK Front Crusher Flares - Narrow Width (Steel)      | 17-03-031   |
|    | JK Front Crusher Flares - Narrow Width (Aluminum)   | 17-03-031-ALUM  |
|    | JK Front Crusher Flares - Extra Wide (Steel)        | 17-03-032   |
|    | JK Front Crusher Flares - Extra Wide (Aluminum)     | 17-03-032-ALUM  |

## Crusher™ Flares - Rear



Standard width shown.

|    | Product Description                                | Part Number   |
|----|--|---|
| JK | JK Rear Crusher Flares - Standard Width (Steel)    |  17-05-010 |
|    | JK Rear Crusher Flares - Standard Width (Aluminum) | 17-05-010-ALUM  |
|    | JK Rear Crusher Flares - Extra Wide (Steel)        | 17-05-020   |
|    | JK Rear Crusher Flares - Extra Wide (Aluminum)     | 17-05-020-ALUM  |



# Flares / Fenders

# DeFender™ XC

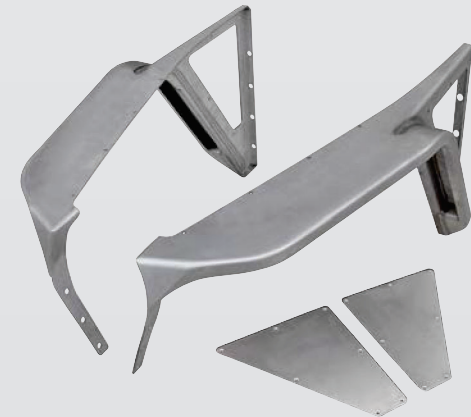
## DeFender™ XC Front Fenders



eXtreme Clearance Negative Flares



eXtreme Clearance Zero Flares



eXtreme Clearance 3-inch Tapered Flares

|    | Product Description                                       | Part Number    |
|----|---|----------------|
| TJ | TJ DeFender XC (High-Line) - Negative Flares (Steel)      | 14-02-090      |
|    | TJ DeFender XC (High-Line) - Negative Flares (Aluminum)   | 14-02-090-ALUM |
|    | TJ DeFender XC (High-Line) - Zero Flares (Steel)          | 14-02-091      |
|    | TJ DeFender XC (High-Line) - Zero Flares (Aluminum)       | 14-02-091-ALUM |
|    | TJ DeFender XC (High-Line) - 3" Tapered Flares (Steel)    | 14-02-093      |
|    | TJ DeFender XC (High-Line) - 3" Tapered Flares (Aluminum) | 14-02-093-ALUM |

# Flares / Fenders

# DeFenders™

## DeFenders™ – Front



Negative Flares



Zero Flares



5-inch Tapered Flares



3-inch Flares



3-inch Tapered Flares

|    | Product Description                         | Part Number    |
|----|---|----------------|
| TJ | TJ DeFenders - Negative Flares (Steel)      | 14-02-050      |
|    | TJ DeFenders - Negative Flares (Aluminum)   | 14-02-050-ALUM |
|    | TJ DeFenders - Zero Flares (Steel)          | 14-02-060      |
|    | TJ DeFenders - Zero Flares (Aluminum)       | 14-02-060-ALUM |
|    | TJ DeFenders - 3" Flares (Steel)            | 14-02-070      |
|    | TJ DeFenders - 3" Flares (Aluminum)         | 14-02-070-ALUM |
|    | TJ DeFenders - 3" Tapered Flares (Steel)    | 14-02-040      |
|    | TJ DeFenders - 3" Tapered Flares (Aluminum) | 14-02-040-ALUM |
|    | TJ DeFenders - 5" Tapered Flares (Steel)    | 14-02-075      |

|    | Product Description                       | Part Number    |
|----|---|----------------|
| YJ | YJ DeFenders - Negative Flares (Steel)    | 13-02-050      |
|    | YJ DeFenders - Negative Flares (Aluminum) | 13-02-050-ALUM |
|    | YJ DeFenders - Zero Flares (Steel)        | 13-02-060      |
|    | YJ DeFenders - Zero Flares (Aluminum)     | 13-02-060-ALUM |
|    | YJ DeFenders - 3" Taper Flares (Steel)    | 13-02-070      |
|    | YJ DeFenders - 3" Taper Flares (Aluminum) | 13-02-070-ALUM |

Products shown for illustrative purposes only. Construction and installation will vary by platform.

# Flares / Fenders

# DeFenders™

## Weld-On DeFender™ Flares – Rear



3-inch Rear Weld-On Shown

TJ

| Product Description   | Part Number    |
|---|----------------|
| 3" Rear Weld-On DeFender Flares (Steel)                         | 14-05-070      |
| 3" Rear Weld-On DeFender Flares (Aluminum)                      | 14-05-070-ALUM |
| 5" Rear Weld-On DeFender Flares (Steel)                         | 14-05-075      |
| 3" Comp-Cut Rear Weld-On DeFender Flares 093 - Short (Steel)    | 14-05-093      |
| 3" Comp Cut Rear Weld-On DeFender Flares 093 - Short (Aluminum) | 14-05-093-ALUM |
| 3" Comp-Cut Rear Weld-On DeFender Flares 094 - Long (Steel)     | 14-05-094      |
| 3" Comp-Cut Rear Weld-On DeFender Flares 094 - Long (Aluminum)  | 14-05-094-ALUM |

## Bolt-On DeFender™ Flares – Rear

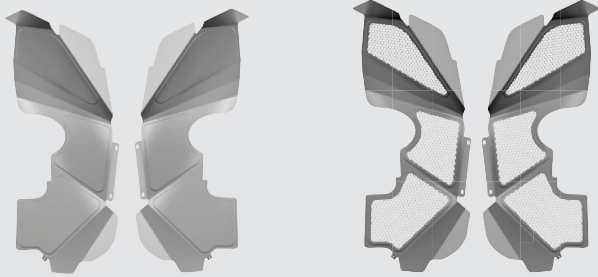


3-inch Rear Bolt-On Shown

TJ

| Product Description                                     | Part Number    |
|---|----------------|
| 3" Rear Bolt-On DeFender Flares (Steel)                 | 14-05-B70      |
| 3" Rear DeFender Flares - Standard - Bolt-on (Aluminum) | 14-05-B70-ALUM |
| 5" Rear Bolt-On DeFender Flares (Steel)                 | 14-05-B75      |

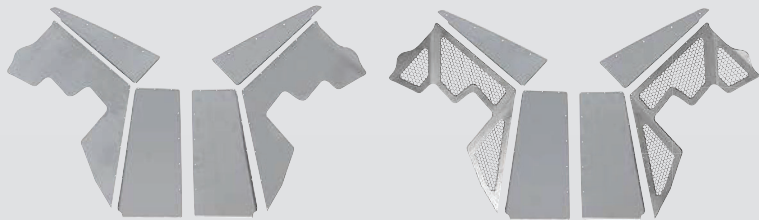
# Flares / Fenders Inner Fenders & Inserts



|    | Product Description                | Part Number |
|----|------------------------------------|-------------|
| JK | JK Front Inner Fender Kit - Solid  | 17-02-080   |
|    | JK Front Inner Fender Kit - Vented | 17-02-080-V |



|    | Product Description               | Part Number   |
|----|-----------------------------------|---------------|
| TJ | DeFender XC "Spyder" Side Inserts | 14-02-090-P05 |



|       | Product Description            | Part Number |
|-------|--------------------------------|-------------|
| TJ/YJ | DeFender "Spyder" Side Inserts | 14-02-051   |

|    | Product Description                       | Part Number   |
|----|---|---------------|
| TJ | TJ DeFender XC Solid Inner Fender Kit     | 14-02-099     |
|    | TJ DeFender XC Vented Inner Fender Kit    | 14-02-099-V   |
|    | TJ DeFender XC Vented Inner Fender Panels | 14-02-099-03V |
|    | TJ DeFender Solid Inner Fender Kit        | 14-02-080     |
|    | TJ DeFender Vented Inner Fender Panels    | 14-02-080-03V |
|    | TJ DeFender Vented Inner Fender Kit       | 14-02-080-V   |



|    | Product Description                | Part Number |
|----|------------------------------------|-------------|
| YJ | YJ DeFender Solid Inner Fender Kit | 13-02-080   |

|    | Product Description                 | Part Number   |
|----|-------------------------------------|---------------|
| TJ | DeFender XC Full Length Side Plates | 14-02-090-P04 |
|    | DeFender Full Length Side Plates    | 14-02-052     |


Products shown for illustrative purposes only. Construction and installation will vary by platform.

# Rockers / Skids

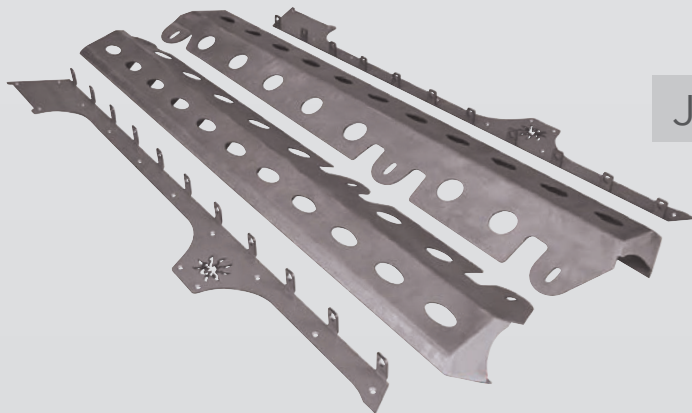
# Brawler Rockers


## Brawler Rockers - JK 2-Door



|    | Product Description                | Part Number   |
|----|------------------------------------|---|
| JK | JK 2-Dr Brawler Rockers (Steel)    |  17-08-200 |
|    | JK 2-Dr Brawler Rockers (Aluminum) | 17-08-200-ALUM  |

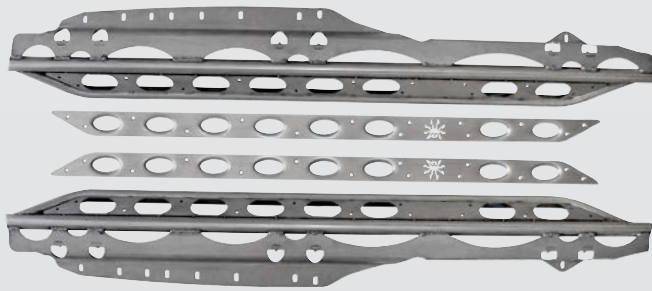
## Brawler Rockers - JK 4-Door



|    | Product Description                | Part Number   |
|----|------------------------------------|---|
| JK | JK 4-Dr Brawler Rockers (Steel)    |  18-08-200 |
|    | JK 4-Dr Brawler Rockers (Aluminum) | 18-08-200-ALUM  |

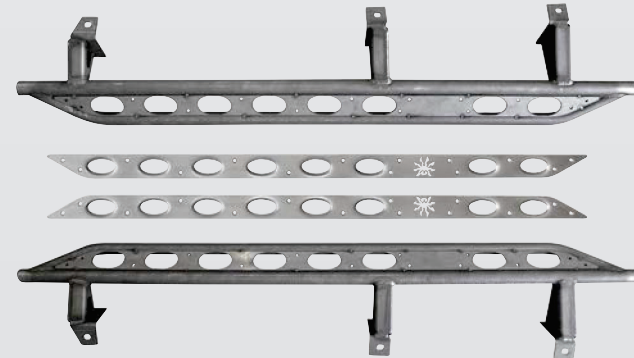
 AVAILABLE WITH SPYDERSHELL™ ARMOR COAT

# Rockers / Skids



|    | Product Description                    | Part Number |
|----|--|-------------|
| JK | JK 4-Dr Rocker Knockers - Body Mounted | 18-08-020   |
|    | JK 2-Dr Rocker Knockers - Body Mounted | 17-08-020   |

# Rocker Knockers



|    | Product Description                     | Part Number |
|----|---|-------------|
| JK | JK 4-Dr Rocker Knockers - Frame Mounted | 18-08-030   |
|    | JK 2-Dr Rocker Knockers - Frame Mounted | 17-08-030   |



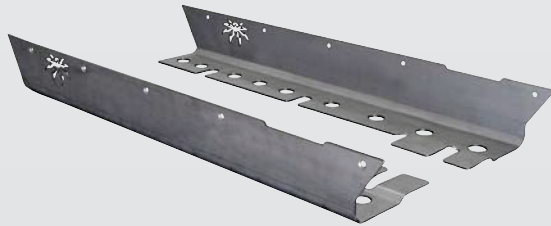
|    | Product Description | Part Number |
|----|---------------------|-------------|
| TJ | TJ Rocker Knockers  | 14-08-050   |



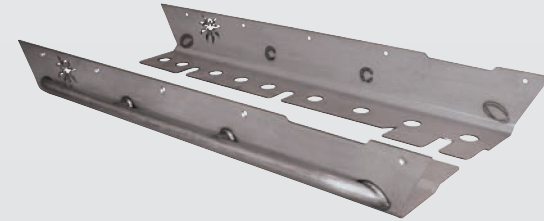
|    | Product Description             | Part Number |
|----|---------------------------------|-------------|
| TJ | TJ Rocker Knockers with Sliders | 14-08-060   |

# Rockers / Skids

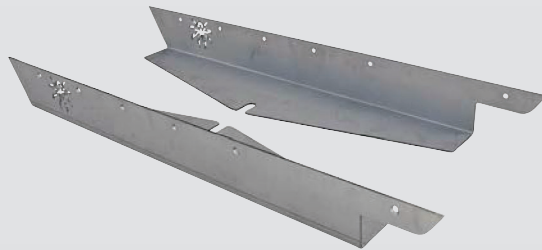
# Rocker Knockers



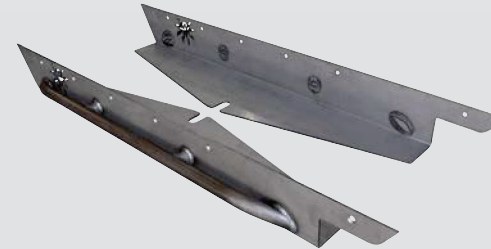
|    | Product Description                   | Part Number |
|----|---------------------------------------|-------------|
| LJ | LJ Rocker Knockers - "Daddy Longlegs" | 15-08-040   |
|    | LJ Rocker Knockers                    | 15-08-050   |



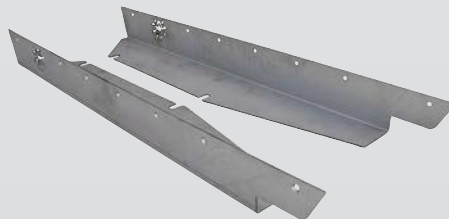
|    | Product Description                                | Part Number |
|----|--|-------------|
| LJ | LJ Rocker Knockers With Sliders - "Daddy Longlegs" | 15-08-045   |
|    | LJ Rocker Knockers with Sliders                    | 15-08-060   |



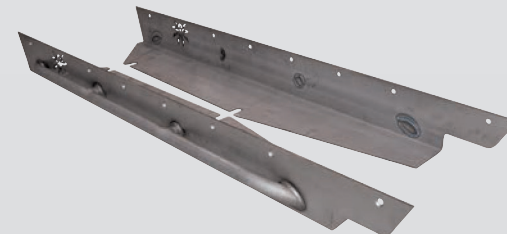
|    | Product Description                        | Part Number |
|----|--|-------------|
| YJ | YJ Rocker Knockers - Stock Wheel Opening   | 13-08-010   |
|    | YJ/CJ-7 Rocker Knockers - TJ Wheel Opening | 13-08-040   |



|    | Product Description                                     | Part Number |
|----|---|-------------|
| YJ | YJ Rocker Knockers with Slider - Stock Wheel Opening    | 13-08-020   |
|    | YJ/CJ-7 Rocker Knockers with Sliders - TJ Wheel Opening | 13-08-050   |



|    | Product Description  | Part Number |
|----|----------------------|-------------|
| CJ | CJ-5 Rocker Knockers | 10-08-010   |
|    | CJ-7 Rocker Knockers | 11-08-010   |
|    | CJ-8 Rocker Knockers | 12-08-010   |



|    | Product Description               | Part Number |
|----|-----------------------------------|-------------|
| CJ | CJ-5 Rocker Knockers with Sliders | 10-08-020   |
|    | CJ-7 Rocker Knockers with Sliders | 11-08-020   |
|    | CJ-8 Rocker Knockers with Slider  | 12-08-020   |

# Rockers / Skids



|    | Product Description                      | Part Number |
|----|--|-------------|
| JK | JK 2-Dr Ricochet Rockers - Frame Mounted | 18-08-040   |
|    | JK 2-Dr Ricochet Rockers - Frame Mounted | 17-08-040   |



|    | Product Description | Part Number |
|----|---------------------|-------------|
| LJ | LJ Ricochet Rockers | 15-50-050   |

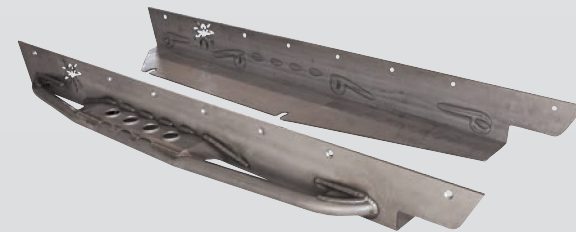
# Ricochet Rockers



|    | Product Description | Part Number |
|----|---------------------|-------------|
| TJ | TJ Ricochet Rockers | 14-50-050   |



|    | Product Description                         | Part Number |
|----|---|-------------|
| YJ | YJ Ricochet Rockers - Stock Wheel Opening   | 13-50-010   |
|    | YJ/CJ-7 Ricochet Rockers - TJ Wheel Opening | 13-50-050   |

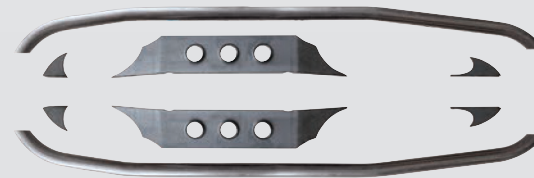
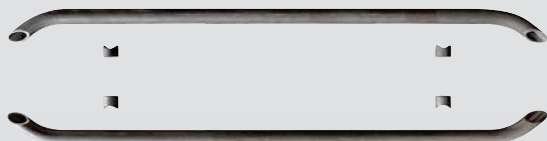
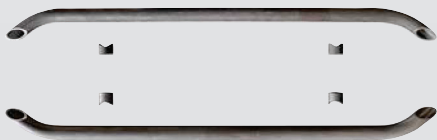
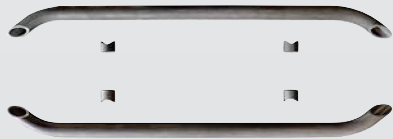


|    | Product Description   | Part Number |
|----|-----------------------|-------------|
| CJ | CJ-7 Ricochet Rockers | 11-50-010   |
|    | CJ-8 Ricochet Rockers | 12-50-010   |



# Rockers / Skids

# D.I.Y. Kits

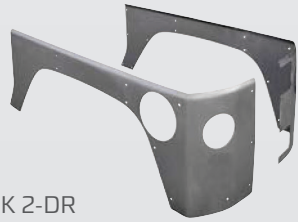


| DIY | Product Description          | Part Number |
|-----|------------------------------|-------------|
|     | DIY Slider Tube Kit - 39.5"  | DIY-08-010  |
|     | DIY Slider Tube Kit - 44.25" | DIY-08-020  |
|     | DIY Slider Tube Kit - 53.75" | DIY-08-030  |

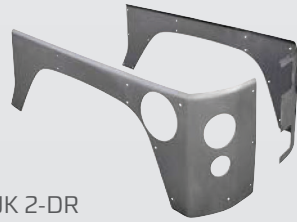
| DIY | Product Description                 | Part Number |
|-----|-------------------------------------|-------------|
|     | DIY Rico Step Kit - 45.25"          | DIY-50-020  |
|     | DIY Rico Step Kit - 54.5"           | DIY-50-040  |
|     | DIY Rico Step Kit - 66.5" (JK 4-Dr) | DIY-50-050  |

# Corner Armor

# Crusher Corners



JK 2-DR  
LED Tail Lights



JK 2-DR  
LED Tail and  
Backup Lights

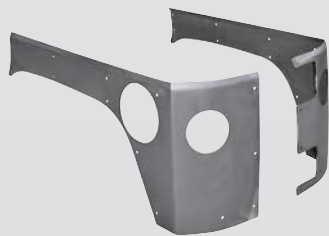


JK 2-DR  
OEM Tail Lights

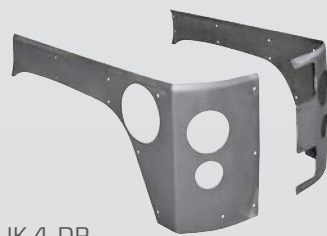


JK 2-DR  
No Light Cutouts

|    | Product Description                                | Part Number |
|----|--|-------------|
| JK | JK 2-Dr Crusher Corners - LED Tail Lights          | 17-04-030   |
|    | JK 2-Dr Crusher Corners - LED Tail & Backup Lights | 17-04-031   |
|    | JK 2-Dr Crusher Corners - OEM Tail Lights          | 17-04-032   |
|    | JK 2-Dr Crusher Corners - No Light Cutouts         | 17-04-034   |



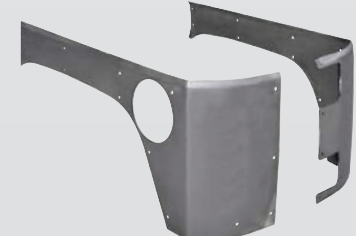
JK 4-DR  
LED Tail Lights



JK 4-DR  
LED Tail and  
Backup Lights



JK 4-DR  
OEM Tail Lights

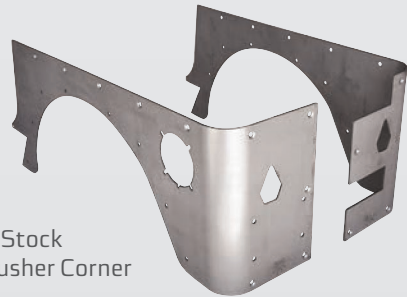


JK 4-DR  
No Light Cutouts

|    | Product Description                                | Part Number |
|----|--|-------------|
| JK | JK 4-Dr Crusher Corners - LED Tail Lights          | 18-05-020   |
|    | JK 4-Dr Crusher Corners - LED Tail & Backup Lights | 18-05-021   |
|    | JK 4-Dr Crusher Corners - OEM Tail Lights          | 18-05-022   |
|    | JK 4-Dr Crusher Corners - No Light Cutouts         | 18-05-024   |

# Corner Armor

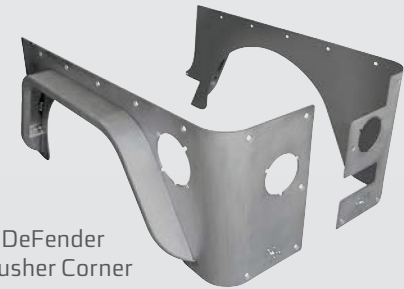
# Crusher Corners



TJ Stock  
Crusher Corner

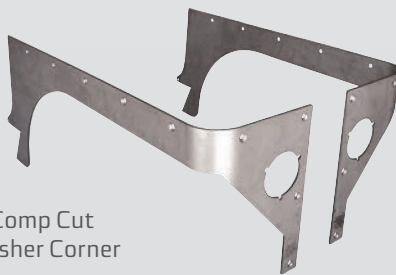


TJ Standard  
Crusher Corner



TJ DeFender  
Crusher Corner

|    | Product Description   | Part Number       |
|----|---|-------------------|
| TJ | TJ Crusher Corners - Stock (Steel)                            | 14-04-010         |
|    | TJ Crusher Corners - Stock (Aluminum)                         | 14-04-010-ALUM    |
|    | TJ Crusher Corners - Standard (Steel)                         | 14-04-020         |
|    | TJ Crusher Corners - Standard (Aluminum)                      | 14-04-020-ALUM    |
|    | TJ Crusher Corners - Standard - No Hinge Cutouts (Steel)      | 14-04-020-TG      |
|    | TJ Crusher Corners - Standard - No Hinge Cutouts (Aluminum)   | 14-04-020-TG-ALUM |
|    | TJ Crusher Corners - Standard - 3" DeFender Flares (Steel)    | 14-04-073         |
|    | TJ Crusher Corners - Standard - 3" DeFender Flares (Aluminum) | 14-04-073-ALUM    |
|    | TJ Crusher Corners - Standard - 5" DeFender Flares (Steel)    | 14-04-075         |



TJ Comp Cut  
Crusher Corner

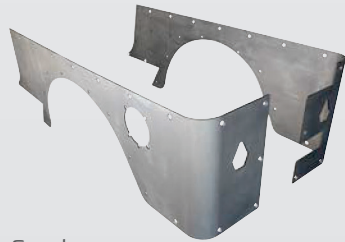


TJ Comp Cut  
Crusher Corner  
w/ 3-inch DeFender Flare

|    | Product Description   | Part Number    |
|----|---|----------------|
| TJ | TJ Crusher Corners - Comp Cut (Steel)                         | 14-04-040      |
|    | TJ Crusher Corners - Comp Cut (Aluminum)                      | 14-04-040-ALUM |
|    | TJ Crusher Corners - Comp Cut - 3" DeFender Flares (Steel)    | 14-04-053      |
|    | TJ Crusher Corners - Comp Cut - 3" DeFender Flares (Aluminum) | 14-04-053-ALUM |

# Corner Armor

# Crusher Corners



Stock



Standard



"Daddy Longlegs"



DeFender 3-inch

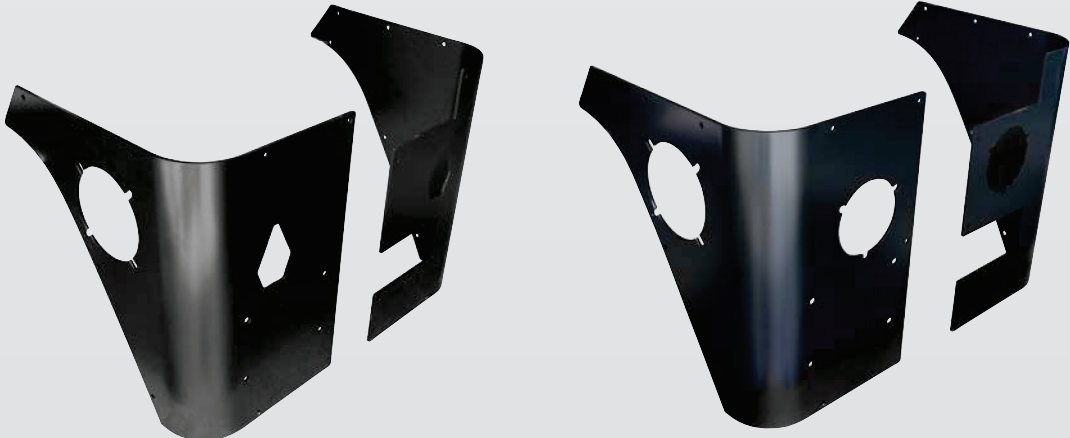
|    | Product Description   | Part Number    |
|----|---|----------------|
| LJ | LJ Crusher Corners - Stock (Steel)                                    | 15-04-010      |
|    | LJ Crusher Corners - Stock (Aluminum)                                 | 15-04-010-ALUM |
|    | LJ Crusher Corners - Standard (Steel)                                 | 15-04-020      |
|    | LJ Crusher Corners - Standard (Aluminum)                              | 15-04-020-ALUM |
|    | LJ Crusher Corners - "Daddy Longlegs" (Steel)                         | 15-04-040      |
|    | LJ Crusher Corners - "Daddy Longlegs" (Aluminum)                      | 15-04-040-ALUM |
|    | LJ Crusher Corners - "Daddy Longlegs" - 3" DeFender Flares (Steel)    | 15-04-043      |
|    | LJ Crusher Corners - "Daddy Longlegs" - 3" DeFender Flares (Aluminum) | 15-04-043-ALUM |
|    | LJ Crusher Corners - Standard - 3" DeFender Flares (Steel)            | 15-04-073      |
|    | LJ Crusher Corners - Standard - 3" DeFender Flares (Aluminum)         | 15-04-073-ALUM |
|    | LJ Crusher Corners - Standard - 5" DeFender Flares (Steel)            | 15-04-075      |

|    | Product Description   | Part Number    |
|----|---|----------------|
| YJ | YJ Crusher Corners - Stock (Steel)                            | 13-04-010      |
|    | YJ Crusher Corners - Stock (Aluminum)                         | 13-04-010-ALUM |
|    | YJ Crusher Corners - Standard (Steel)                         | 13-04-020      |
|    | YJ Crusher Corners - Standard (Aluminum)                      | 13-04-020-ALUM |
|    | YJ Crusher Corners - Comp Cut (Steel)                         | 13-04-040      |
|    | YJ Crusher Corners - Comp Cut (Aluminum)                      | 13-04-040-ALUM |
|    | YJ Crusher Corners - Standard - 3" DeFender Flares (Steel)    | 13-04-073      |
|    | YJ Crusher Corners - Standard - 3" DeFender Flares (Aluminum) | 13-04-073-ALUM |

|    | Product Description                        | Part Number    |
|----|--|----------------|
| CJ | CJ-7 Crusher Corners - Stock (Steel)       | 11-04-010      |
|    | CJ-7 Crusher Corners - Stock (Aluminum)    | 11-04-010-ALUM |
|    | CJ-7 Crusher Corners - Standard (Steel)    | 11-04-020      |
|    | CJ-7 Crusher Corners - Standard (Aluminum) | 11-04-020-ALUM |
|    | CJ-7 Crusher Corners - Comp Cut (Steel)    | 11-04-040      |
|    | CJ-7 Crusher Corners - Comp Cut (Aluminum) | 11-04-040-ALUM |

# Corner Armor

# Trail Corners



|    | Product Description                  | Part Number  |
|----|--------------------------------------|--------------|
| YJ | YJ Trail Corners - Stock Tail Lights | 13-06-010-PC |
|    | YJ Trail Corners - LED Tail Lights   | 13-06-020-PC |

|    | Product Description                  | Part Number  |
|----|--------------------------------------|--------------|
| TJ | TJ Trail Corners - Stock Tail Lights | 14-06-010-PC |
|    | TJ Trail Corners - LED Tail Lights   | 14-06-020-PC |

|    | Product Description                  | Part Number  |
|----|--------------------------------------|--------------|
| LJ | LJ Trail Corners - Stock Tail Lights | 15-06-010-PC |
|    | LJ Trail Corners - LED Tail Lights   | 15-06-020-PC |

# Exterior Accessories



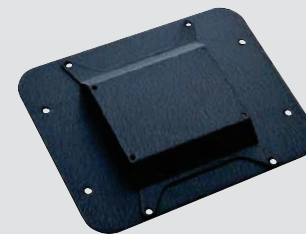
|    | Product Description                | Part Number |
|----|------------------------------------|-------------|
| JK | JK Rear License Plate Delete Cover | 17-04-112   |



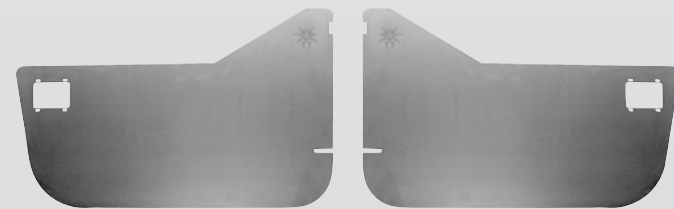
|    | Product Description | Part Number |
|----|---------------------|-------------|
| JK | JK Tramp Stamp      | 18-04-011   |



|    | Product Description                                    | Part Number  |
|----|--|--------------|
| JK | JK Tramp Stamp II (Wide Vent) with License Plate Mount | 18-04-012    |
|    | JK Tramp Stamp II (Wide Vent)                          | 18-04-012-01 |
|    | JK License Plate Mount (Wide Vent)                     | 18-04-012-02 |



|    | Product Description                                    | Part Number  |
|----|--|--------------|
| JK | JK Tramp Stamp II (Tall Vent) with License Plate Mount | 18-04-013    |
|    | JK Tramp Stamp II (Tall Vent)                          | 18-04-013-01 |
|    | JK License Plate Mount (Tall Vent)                     | 18-04-013-03 |



|    | Product Description | Part Number |
|----|---------------------|-------------|
| TJ | Crawler Door Skins  | 14-27-010   |

# Exterior Accessories



|    | Product Description | Part Number |
|----|---------------------|-------------|
| TJ | TJ TrailGate        | 14-66-010   |

|    | Product Description | Part Number |
|----|---------------------|-------------|
| YJ | YJ TrailGate        | 13-66-010   |



|       | Product Description                     | Part Number  |
|-------|---|--------------|
| TJ/YJ | TJ-YJ Tramp Stamp - Bare                | 14-04-011    |
|       | TJ-YJ Tramp Stamp - Black Powder Coated | 14-04-011-PC |



|    | Product Description             | Part Number |
|----|---------------------------------|-------------|
| TJ | TJ Tailgate Hinge Delete Plates | 14-04-005   |

|    | Product Description             | Part Number |
|----|---------------------------------|-------------|
| YJ | YJ Tailgate Hinge Delete Plates | 13-04-005   |



|    | Product Description       | Part Number  |
|----|---------------------------|--------------|
| CJ | CJ Tramp Stamp - Bare     | 11-04-011    |
|    | CJ Tramp Stamp - Black PC | 11-04-011-PC |

# Cages

# Trail Cage

JK Bolt-Together Trail Cage (2-DR and 4-Dr)



|    | Product Description                                | Part Number |
|----|--|-------------|
| JK | JK Bolt-Together Trail Cage '07-'11                | 18-19-010   |
|    | JK Bolt-Together Trail Cage '07-'11 - Grab Handles | 18-19-010-G |
|    | JK Bolt-Together Trail Cage '11+                   | 18-19-015   |
|    | JK Bolt-Together Trail Cage '11+ - Grab Handles    | 18-19-015-G |



# Cages

# Trail Cage



|    | Product Description | Part Number |
|----|---------------------|-------------|
| TJ | TJ Trail Cage Kit   | 14-18-010   |



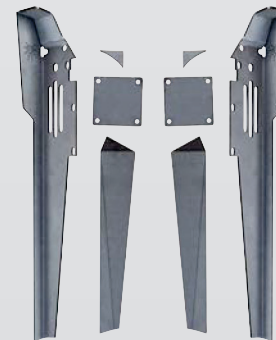
|    | Product Description | Part Number |
|----|---------------------|-------------|
| YJ | YJ Trail Cage Kit   | 13-18-010   |



|    | Product Description                 | Part Number |
|----|-------------------------------------|-------------|
| TJ | TJ Trail Cage Rear Spreader Bar Kit | 14-18-020   |

|    | Product Description      | Part Number |
|----|--------------------------|-------------|
| YJ | YJ Rear Spreader Bar Kit | 13-18-020   |

|    | Product Description          | Part Number |
|----|------------------------------|-------------|
| TJ | TJ Heavy Duty Header Bar Kit | 14-18-030   |



|    | Product Description              | Part Number |
|----|----------------------------------|-------------|
| TJ | TJ Trail Cage Lower A-Pillar Kit | 14-18-011   |

|    | Product Description              | Part Number |
|----|----------------------------------|-------------|
| YJ | YJ Trail Cage Lower A-Pillar Kit | 13-18-011   |

# Cages

# Lazer-Fit



|    | Product Description                           | Part Number  |
|----|---|--------------|
| TJ | TJ Lazer-Fit Full Cage Kit                    | 14-19-010    |
|    | TJ Lazer-Fit Full Cage - Welded               | 14-19-010-W  |
|    | TJ Lazer-Fit Full Cage - Welded w/GrabHandles | 14-19-010-WG |

|    | Product Description                               | Part Number  |
|----|---|--------------|
| LJ | LJ Lazer-Fit Full Cage Kit                        | 15-19-010    |
|    | LJ Lazer-Fit Full Cage Kit - Welded               | 15-19-010-W  |
|    | LJ Lazer-Fit Full Cage Kit - Welded w/GrabHandles | 15-19-010-WG |



|       | Product Description                 | Part Number |
|-------|-------------------------------------|-------------|
| YJ/CJ | YJ-CJ7 Lazer-Fit Full Cage Kit      | 13-19-020   |
|       | YJ-CJ7 Lazer-Fit Full Cage - Welded | 13-19-020-W |

## Additional Cage Parts

| Product Description                | Part Number |
|------------------------------------|-------------|
| Cage Gussets 90-degrees - Web (2)  | 43-43-001-W |
| Cage Gussets Curved - Web (2)      | 43-43-011-W |
| Cage Gussets 100-degrees - Web (2) | 43-43-014-W |
| Cage Grab Handles (2)              | 14-19-020   |
| Machined Seatbelt Bung             | 14-19-031   |

# Cages

# Cage Accessories



| Product Description         | Part Number |
|-----------------------------|-------------|
| PS Fire Extinguisher Holder | 57-62-110   |



| Product Description          | Part Number |
|------------------------------|-------------|
| PS Medium Duty Ratchet Strap | 57-63-010   |



| Product Description    | Part Number |
|------------------------|-------------|
| PS Grab Handles (Pair) | 57-63-200   |



| Product Description       | Part Number |
|---------------------------|-------------|
| PS 3-Way Spare Tire Strap | 57-63-001   |



| Product Description           | Part Number |
|-------------------------------|-------------|
| PS Flashlight Holder - 2-Cell | 57-62-010   |
| PS Flashlight Holder - 3-Cell | 57-62-011   |

# Differential Covers

# Bombshell™

Dana 44



Dana 30



| Product Description                          | Part Number  |
|--|--------------|
| Dana 44 Bombshell Diff Cover                 | 42-11-044    |
| Dana 44 Bombshell Diff Cover - Powder Coated | 42-11-044-PC |

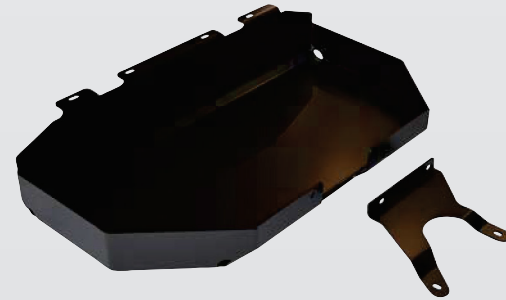
| Product Description                          | Part Number  |
|--|--------------|
| Dana 30 Bombshell Diff Cover                 | 42-11-030    |
| Dana 30 Bombshell Diff Cover - Powder Coated | 42-11-030-PC |

# Under Carriage Armor

# Skid Plates



|    | Product Description        | Part Number |
|----|----------------------------|-------------|
| YJ | YJ Steering Box Skid Plate | 13-15-010   |



|    | Product Description     | Part Number |
|----|-------------------------|-------------|
| TJ | TJ Fuel Tank Skid Plate | 14-14-010   |



|    | Product Description               | Part Number |
|----|-----------------------------------|-------------|
| TJ | 97-'02 TJ Steering Box Skid Plate | 14-15-010   |
|    | 03-'06 TJ Steering Box Skid Plate | 14-15-020   |



|    | Product Description | Part Number |
|----|---------------------|-------------|
| JK | JK Evap Skid Plate  | 17-56-012   |

# Exterior Accessories

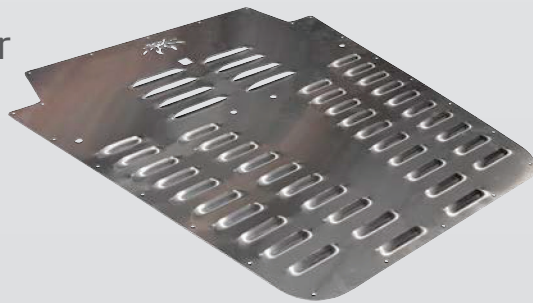
# Hood Louvers

CJ  
Hood Louver



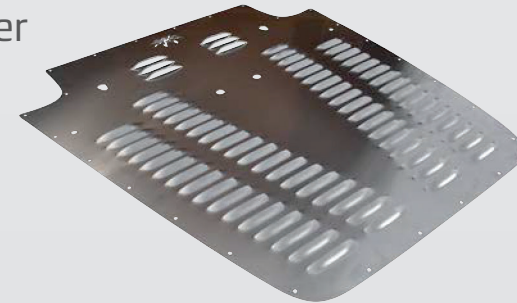
|    | Product Description                          | Part Number  |
|----|--|--------------|
| CJ | CJ Hood Louver '76-'86 - Bare                | 11-53-010    |
|    | CJ Hood Louver '76-'86 - Black Powder Coated | 11-53-010-PC |

JK  
Hood Louver



|    | Product Description                          | Part Number  |
|----|--|--------------|
| JK | JK Hood Louver '07-'12 - Bare                | 17-53-010    |
|    | JK Hood Louver '07-'12 - Black Powder Coated | 17-53-010-PC |
|    | JK Hood Louver '13+ - Bare                   | 17-53-011    |
|    | JK Hood Louver '13+ - Black Powder Coated    | 17-53-011-PC |

TJ/YJ  
Hood Louver



|    | Product Description                          | Part Number  |
|----|--|--------------|
| TJ | TJ Hood Louver '03-'06 - Bare                | 14-53-010    |
|    | TJ Hood Louver '03-'06 - Black Powder Coated | 14-53-010-PC |
|    | TJ Hood Louver '97-'02 - Bare                | 14-53-011    |
|    | TJ Hood Louver '97-'02 - Black Powder Coated | 14-53-011-PC |

|    | Product Description                  | Part Number  |
|----|--------------------------------------|--------------|
| YJ | YJ Hood Louver - Bare                | 13-53-010    |
|    | YJ Hood Louver - Black Powder Coated | 13-53-010-PC |

|    | Product Description                          | Part Number  |
|----|--|--------------|
| CJ | CJ Hood Louver '76-'86 - Bare                | 11-53-010    |
|    | CJ Hood Louver '76-'86 - Black Powder Coated | 11-53-010-PC |

# Interior Accessories

---

## Storage



| Product Name                  | Part Number |
|-------------------------------|-------------|
| PS Gear Bag 22x8x5 (JK Trunk) | 57-17-100   |



| Product Name              | Part Number |
|---------------------------|-------------|
| Poison Spyder Trail Purse | 57-48-010   |

# Lighting

# Components



| Product Name                               | Part Number |
|--|-------------|
| JK LED Tail Light Harness - Driver Side    | 41-06-010-D |
| JK LED Tail Light Harness - Passenger Side | 41-06-010-P |



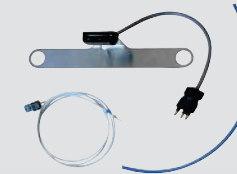
| Product Name   | Part Number |
|--|-------------|
| LED License Plate & 3rd Brake Light - 6' Extension Harness | 41-04-LP6   |



| Product Name                                   | Part Number |
|--|-------------|
| 4in LED Back-Up Light Extension Harness (Pair) | 41-06-030   |



| Product Name                                    | Part Number |
|---|-------------|
| 24in LED Back-Up Light Extension Harness (Pair) | 41-06-020   |



| Product Name   | Part Number |
|--|-------------|
| LED License Plate & 3rd Brake Light - PSC Connectors | 41-06-040   |



| Product Name                              | Part Number |
|---|-------------|
| LED Resistor Kit (for JK LED Tail Lights) | 41-04-650   |



| Product Name   | Part Number |
|--|-------------|
| LED License Plate & 3rd Brake Light - Generic Connectors | 41-04-LP1   |



| Product Name                    | Part Number |
|---------------------------------|-------------|
| 4-Pin LED Flasher - '97-'00 TJ  | 41-04-026   |
| 5-Pin LED Flasher '01-'06 TJ-LJ | 41-04-106   |
| 2-Pin LED Flasher '76-'96 CJ-YJ | 41-04-262   |

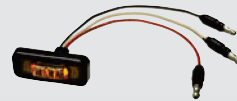


# Lighting

# Components



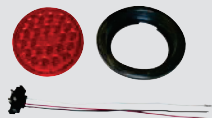
| Product Name                     | Part Number |
|----------------------------------|-------------|
| 4" 6-LED Tail Light Flange Style | 41-04-036   |



| Product Name                        | Part Number |
|-------------------------------------|-------------|
| Rectangular LED Marker Lamp - Amber | 41-04-203   |



| Product Name  | Part Number |
|---|-------------|
| 4" 24-LED Tail Light Push-In with Pigtail & Grommet - Clear/Red | 41-04-051   |



| Product Name  | Part Number |
|---|-------------|
| 4" 24-LED Tail Light Push-In with Pigtail & Grommet - Red | 41-04-050   |



| Product Name                     | Part Number |
|----------------------------------|-------------|
| 2-1/2" LED Back-Up Light - Clear | 41-04-300   |



| Product Name                    | Part Number |
|---------------------------------|-------------|
| Trucklite 7" Round LED Headlamp | 41-02-270   |



| Product Name                        | Part Number |
|-------------------------------------|-------------|
| 3/4" LED Marker Lamp - 3-Wire - Red | 41-04-070   |



| Product Name                                  | Part Number |
|---|-------------|
| 3/4" LED Marker Lamp - 3-Wire - Clear / Amber | 41-04-080   |



| Product Name                          | Part Number |
|---------------------------------------|-------------|
| 3/4" LED Marker Lamp - 3-Wire - Amber | 41-04-085   |

# Lighting

# Mounts



| Product Name                               | Part Number |
|--|-------------|
| JK Light Bar Mount (Steel) - Rigid 50" LED | 45-28-R50   |



| Product Name                       | Part Number |
|------------------------------------|-------------|
| TJ Light Bar Mount - Rigid 50" LED | 45-28-R54   |



| Product Name                                    | Part Number |
|---|-------------|
| JK Dual Light Bar Mount (Steel) - Rigid 50" LED | 45-28-E50   |



| Product Name                          | Part Number |
|---------------------------------------|-------------|
| YJ-CJ Light Bar Mount - Rigid 50" LED | 45-12-R50   |

# Lighting

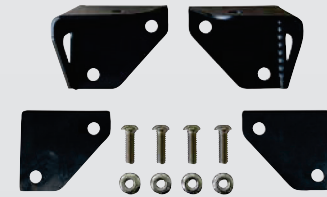
# Mounts



| Product Name                          | Part Number |
|---------------------------------------|-------------|
| JK Lower A-Pillar Light Mounts (Pair) | 45-28-RDA   |



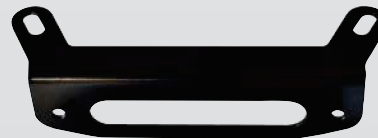
| Product Name                          | Part Number |
|---------------------------------------|-------------|
| TJ Lower A-Pillar Light Mounts (Pair) | 45-28-RDA2  |



| Product Name                             | Part Number |
|--|-------------|
| YJ-CJ Lower A-Pillar Light Mounts (Pair) | 45-12-RDA   |



| Product Name                | Part Number |
|-----------------------------|-------------|
| Roller Fairlead Light Mount | 45-28-010   |



| Product Name               | Part Number |
|----------------------------|-------------|
| Hawse Fairlead Light Mount | 45-28-020   |

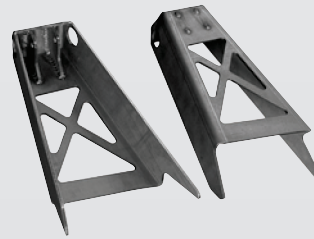


| Product Name                                 | Part Number |
|--|-------------|
| Hawse Fairlead Rigid 10" LED Light Bar Mount | 45-28-R10   |

# Builder Parts Mount / Axle / X Member



|    | Product Description | Part Number |
|----|---------------------|-------------|
| TJ | TJ BFH Body Mounts  | 14-51-030   |



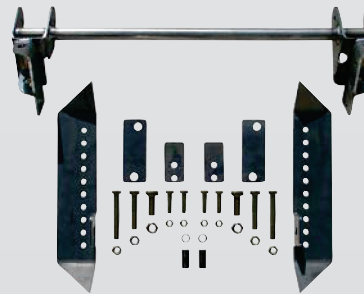
|    | Product Description              | Part Number |
|----|----------------------------------|-------------|
| TJ | TJ Upper Coilover Mounts - Front | 14-51-010   |



|    | Product Description             | Part Number |
|----|---------------------------------|-------------|
| TJ | TJ Upper Coilover Mounts - Rear | 14-51-110   |



|    | Product Description | Part Number |
|----|---------------------|-------------|
| JK | JK Antenna Mount    | 17-28-A10   |



|    | Product Description               | Part Number |
|----|-----------------------------------|-------------|
| CJ | CJ Full Width Axle Conversion Kit | 11-20-010   |



|    | Product Description                             | Part Number |
|----|---|-------------|
| JK | JK Extreme Duty Trans-Mount Crossmember '07-'11 | 18-56-020   |
|    | JK Extreme Duty Trans-Mount Crossmember '12+    | 18-56-025   |

# Accessories



| Product Description   | Part Number |
|-----------------------|-------------|
| 3/4" Recovery Shackle | 56-16-010   |



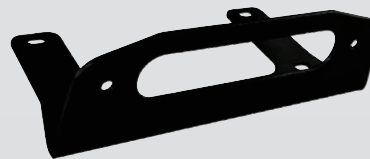
| Product Description                     | Part Number |
|---|-------------|
| Poison Spyder 3in X 30ft Recovery Strap | 57-63-515   |



| Product Description                               | Part Number |
|---|-------------|
| Wheel Spacers 1.5", 5-on-5", Hub-Centric (Pair)   | WS-17-010   |
| Wheel Spacers 1.5", 5-on-4.5", Hub-Centric (Pair) | WS-14-010   |



| Product Description           | Part Number |
|-------------------------------|-------------|
| Aluminum Hawse Winch Fairlead | 45-45-010   |



| Product Description  | Part Number |
|----------------------|-------------|
| Winch Fairlead Mount | 45-57-010   |



| Product Description      | Part Number  |
|--------------------------|--------------|
| Zeon Winch Spacer Plates | 45-57-010-03 |

# Apparel and Gifts

---





# Index

---

## A

### Accessories

Recovery Shackle 87

Recovery Strap 87

Wheel Spacers 87

Winch Accessories

    Fairlead Mount 87

    Aluminum Fairlead 87

    Winch Spacer Plates 87

### Apparel

88

## B

### Builder Parts

Axle

    CJ Full Width Axle Kit 86

Mounts

    Antenna Mount 86

    BFH Body Mount 86

    Coilover Mounts 86

X Member

    JK Extreme Duty Cross-Member 86

### Bumpers

BFH (Built for Hammers) 18

    BFH Disco Skid 20, 50

    BFH Front 18, 20, 50, 51

    BFH Rear 18, 21, 50, 51

    Rear Cross-Member 50

Jack Mounts 56

Rock Brawler 22

    Brawler Front Kit 54

    Brawler Full Width 24, 52

    Brawler Lite 24, 52, 53

    Brawler Mid 24, 52

    Brawler Skid Plate 24, 53

    Rear Bumper (No Carrier) 56

    Rock Brawler II Rear Tire Carrier 25, 55

    Rock Brawler Rear Tire Carrier 25, 55

Stingers

    Brawler Bar 50, 51

    Comp Stinger 50, 51

    Rear Stinger Tire Carrier 27

    Trail Stinger 50, 51



# Index

---

## C

### Cages

Cage Accessories

Fire Extinguisher Holder 77

Flashlight Holder 77

Ratchet Strap 77

Soft Grab Handles 77

Tire Strap 77

Lazer-Fit Full Cage Kit 46, 47, 76

Trail Cage 74, 75

### Corner Armor

Crusher Corner 40, 41, 68, 69, 70

Trail Corner 71

## E

### Exterior Accessories

Bombshell Diff Covers 48, 49

Dana 33 Cover 78

Dana 44 Cover 78

Door Skins 72

Hood Louver 44, 45, 80

License Plate Delete 72

Trail Gate 43, 42, 73

Tramp Stamp 42, 43, 72, 73

## F

### Flares/Fenders

Crusher Flares 28

Front 28, 30, 58

Rear 28, 31, 58

DeFender Flares 32

Front 32, 33, 60

Inner Fenders 33, 62

Rear 32, 33, 61

Spyder Side Insert 33

XC (Extreme Clearance) 33, 59

## I

### Interior Accessories

Gear Bag 81

Trail Purse 81

# Index

---

## L

### Lighting

Backup Lights 82

Connectors 82

Harnesses 82

Headlamps 83

LED Flashers 82

LED Marker Lamps 83

Mounts

    A-Pillar Light Mounts 85

    Fairlead Light Mounts 85

    LED Light Bar Mounts 84

Tail Lights 83

## P

### Powder Coating

SpyderShell™ Armor Coat 14,15, 52,58, 55, 63

## R

### Rocker Armor

Brawler Rockers 34, 35, 63

DIY Rocker Kits

    Rico Step Kit 67

    Slider Tubes 67

Ricochet Rockers 38, 66

Rocker Knockers 36, 64, 65

## T

### Tire Carriers

JK Body Mounted Tire Carrier 26, 57

TJ Rear Stinger Tire Carrier 27, 57

## U

### Under Carriage Armor

Skid Plates

    Evap Skid Plate 79

    Fuel Tank Skid Plate 79

    Steering Box Skid Plate 79









Learn more about off-road bumpers we have.