



PIT PAL PRODUCTS

**Thank You For Choosing Pit Pal Products!
Your Purchase Is Greatly Appreciated!**

**Please continue to choose Pit Pal Products for all of your organizational needs
in the trailer, shop, or at the track.**

Installation Instructions for #294E 48" Tire Rack Extension Kit Installation Instructions for #295E 64" Tire Rack Extension Kit

Using components and fasteners, assemble carefully using these instructions and mount on trailer or garage wall, using 5/16" bolts or #12 stainless self tapping screws (not provided). Design allows for mounting on 16" centers, to align with vertical studs in wall. More assembly instructions on reverse side.

Figure 1

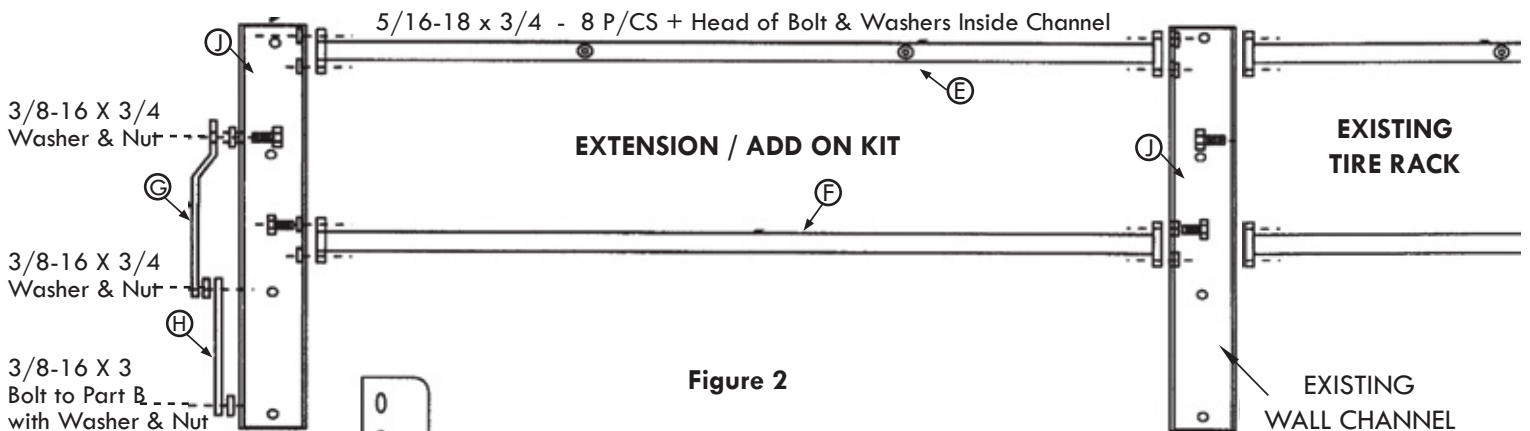
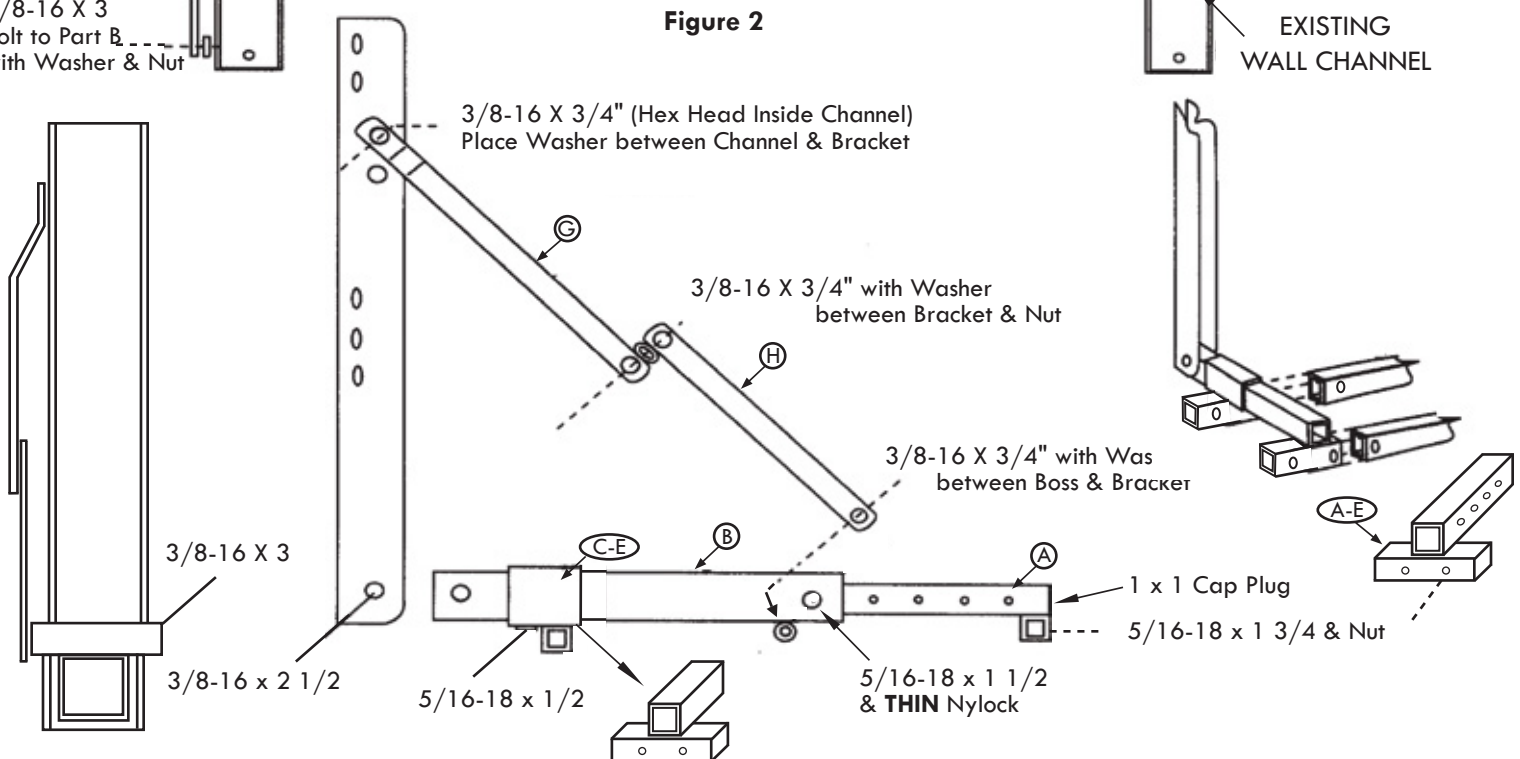


Figure 2



ASSEMBLY INSTRUCTIONS

Lay out all pieces of your tire rack to make sure all pieces are correct. Separate all hardware.

1. Decide which side of your existing mounted Adjustable Tire Rack is going to be extended. Remove the Hinge Tube Assembly on that side (Parts A B C). Leave the Scissors Support Bracket assembly attached. Put hardware to the side, you will reuse in Step 2.

2. Replace the just removed Scissors Support Bracket assembly with your new extension kit Parts A B C. (Part A) will have a two hole tube weldment on the end and the Part C weldment will have two holes. Install and reattach the Scissors Support Bracket assembly using the hardware from Step 1.

3. Fasten the Wall Cross Tube, top Part E (two holes) and Part F Tire Bumper Wall Cross Tube. Using four 5/16-18 x 3/4" hardware, screw head and washer through the inside of the channel.

4. Fasten the wall channel Part J to the Wall Cross Tube with the same hardware as Step 3. Level or line up with existing frame, fasten to wall.

5. Install the existing Hinge Assembly from Step 1 into the channel using 3/8-16 x 2 1/2" screw and lock nut. Assemble Scissors Support Brackets 3/8-16 x 3/4" with washer in between brackets. Attach Scissor Support Bracket to round sleeve on Part B using 3/8-16 x 3" screw and lock nut.

6. Install Tire Cross Tubes into extension brackets A and C using four 5/16-18 x 1 3/4" screw and lock nut.

ADJUSTABLE TIRE RACK PIECES

PART	DESCRIPTION	QTY PER RACK	MATERIAL	LENGTH	ADJUSTABLE TIRE RACK - 48" AND 64" EXTENSION KIT HARDWARE LIST:	
(A-E)	Adjustable Telescoping Support (With Weldment) LH/RH	1	1 x 1 Tube	18.000"	BOLTS: 5/16-18 x 1/2"	QTY 2
(B)	Hinge Support Tube	1	1 1/4 x 1 1/4 Tube	17.000"	5/16-18 x 3/4"	QTY 8
(C-E)	Tire Cross Tube Sleeve (Universal LH/RH)	1	1 1/2 x 1 1/2 with 1 X 1 Weldment	3.000"	5/16-18 x 1 3/4"	QTY 4
(D)	Tire Cross Tube	2	1 x 1 Tube	47 3/4"	5/16-18 x 1 1/2"	QTY 1
	48" Tire Rack	2		63 7/8"	3/8-16 x 3/4"	QTY 2
(E)	Wall Cross Tube - Top	1	1/2 x 1 1/2 Rect. Tube with 2-1" holes	46 1/8"	3/8-16 x 2 1/2"	QTY 1
	48" Tire Rack	1		62 1/8"	3/8-16 x 3"	QTY 1
(F)	Wall Cross Tube	1	1/2 x 1 1/2 Rect. Tube Weldment	46 1/8"	NUTS: 5/16-18 Nylon Lock Nuts	QTY 12
	Tire Bumper	1		62 1/8"	5/16-18 Nylon Lock Nuts (Thin)	QTY 1
(G)	Top Scissors Support Bracket	1	1/8 x 1	16"	3/8-16 Nylon Lock Nuts	QTY 4
	Formed	1		12"	WASHERS: 5/16"	QTY 8
(H)	Bottom Scissors Support Bracket	1	1/8 x 1	12"	3/8"	QTY 3
	Formed	1		12"	PLASTIC PLUGS: 1 x 1 Tube Plastic Cap Plug	QTY 1
(J)	Wall Channel	1	1/8 x 1	12"	1" Round Plastic Cap Plug	QTY 2
	Formed	1		12"	2 1/4 x 5/16" Snap Pins	QTY 1