

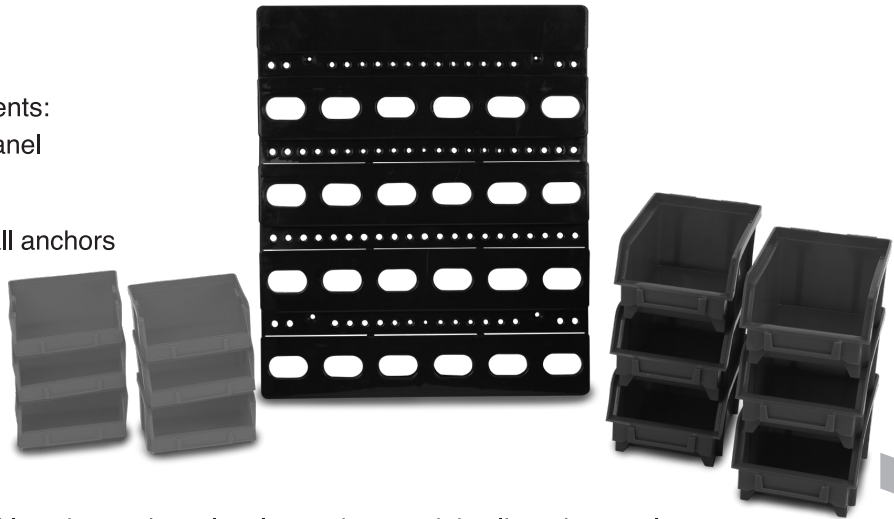
12 BIN WALL MOUNT BIN SYSTEM

Item Number W530

MOUNTING INSTRUCTIONS

Unpack and inspect the included components:

- 1 - 12.5 in. x 14.75 in. bin mounting panel
- 6 - Mini red bins
- 6 - Small blue bins
- 1 - Hardware kit with 4 screws and wall anchors



1. Position bin mounting panel in desired location and use level to make sure it is aligned properly.
2. Use pencil to mark the 4 mounting hole locations which are indicated in the picture below.
3. Take care to mount the panel right side up. The slots the bins mount onto should be facing up. If unsure attach one bin to the bin mounting panel to verify which side is up.
4. Use included hardware to secure bin mounting panel to wall. If placement allows attach one side of mounting holes directly to wall studs.

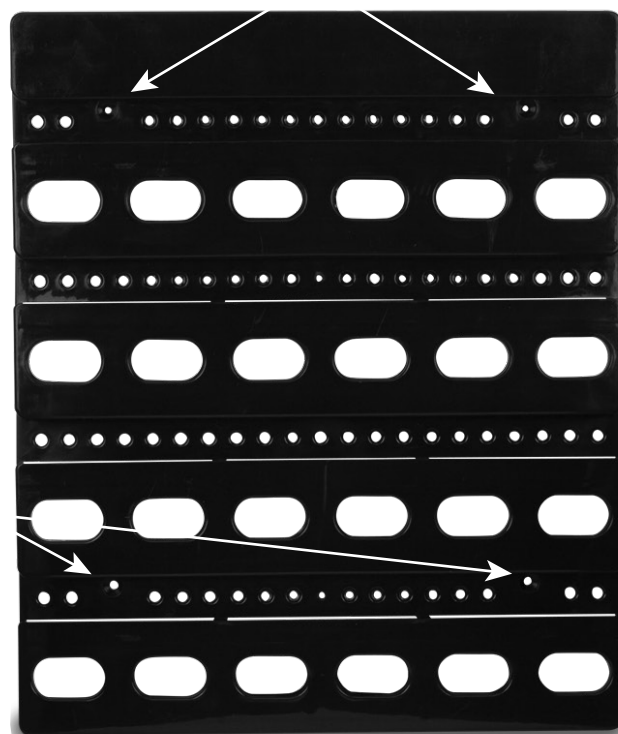
NOTE: If bins will be used for heavy duty service mount wall panel to plywood and attach plywood to wall studs

5. Enjoy your new bins. Bins can be arranged on mounting bracket in any configuration. Multiple units can be used in conjunction to expand your bin system as large as you like.

Weight Capacity

- Mini bins = 1.5 lbs.
- Small bins = 2.5 lbs.
- Total Panel weight capacity = 24 lbs.

Mounting Holes



Mounting Holes

Performance Tool®

PT
Performance Tool®

Check out the collection of fasteners we offer.