

IMPORTANT SAFETY INFORMATION

- Do not exceed rated weight capacity.
- Red bin capacity is 5 lbs. each. Blue bin capacity is 8 lbs. each.
- Always inspect bins for any cracks before use. If any damage is found do not use.

Table Top Storage Bin Rack

Stock Number W5182

MANUAL

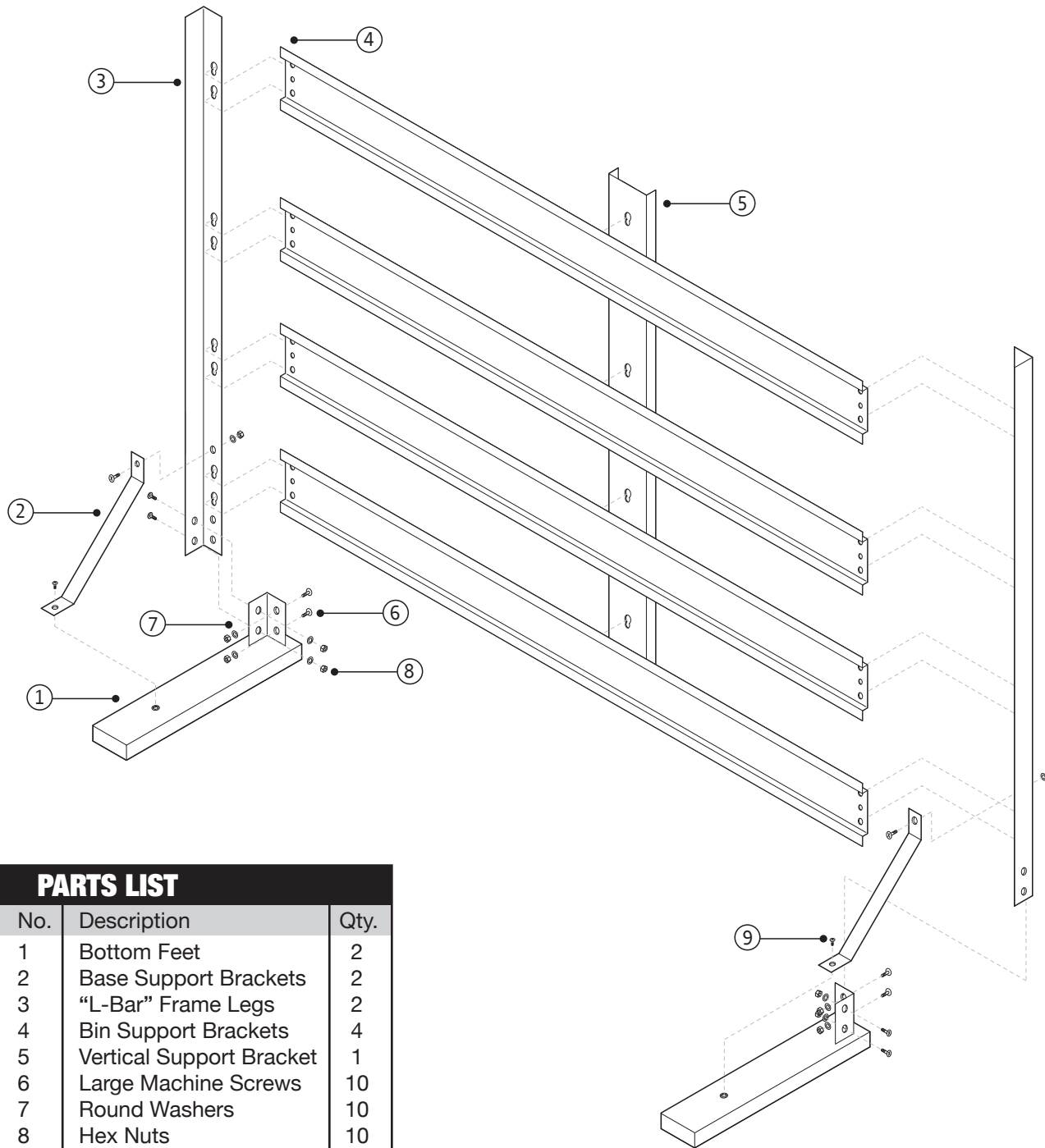


WARNING: This product and its packaging contain a chemical known to the State of California to cause cancer, birth defects or other reproductive harm.

Always wear eye protection when using tools.

FOR YOUR SAFETY,
please read these instructions carefully and retain them for future use.

**Performance
Tool®**



SPECIFICATIONS

NOTE: Specifications are subject to change without notice.

Red Bins: 14 (6-1/2 L x 4-1/16 W x 3 in. H)
 Blue Bins: 10 (9-1/4 L x 6 W x 5 in. H)
 Rack Height: 25-1/4 in.
 Rack Width: 32 in.
 Rack Depth: 10-1/8 in.
 Construction: Powder Coated Steel

TOOLS REQUIRED

- #2 Phillips head screwdriver
- 10 mm wrench or socket and ratchet

ASSEMBLY INSTRUCTIONS

1. Place the feet on a flat surface w/ the brackets facing inward. Position one of the L-Bar frame legs on the inside the bracket. **NOTE:** the tear drop shaped holes should be on the longer side of the tray, with the larger circle portion of the openings facing down.
2. Use a large screw, washer and nut to fasten the legs to each of the feet.
3. Place the bottom bin support bracket on to the legs. Make sure both holes in the support bracket are closer to the top.
4. Align the holes in the base support brackets with the threaded holes on the base, and holes in the legs. Fasten the top holes with a large screw, washer and nut. Fasten the bottom holes with two small machine screws.
5. Insert remaining bin support brackets on to the legs.
6. Align the vertical support bracket with the bolts on back of the bin support brackets, and lock into place.

Mounting to a Wall: There are 3/16 in. holes on each cross bar that are approx 30-1/4 in. apart. If mounting to a wall it is recommended that you mount to studs where possible and/or use wall anchors that will support the weight of the items you wish to store. Total weight should not exceed 100 lbs. Use a minimum of 4 anchor points, and more depending on the wall material, thickness, and weight of goods being stored.

PARTS LIST		
No.	Description	Qty.
1	Bottom Feet	2
2	Base Support Brackets	2
3	"L-Bar" Frame Legs	2
4	Bin Support Brackets	4
5	Vertical Support Bracket	1
6	Large Machine Screws	10
7	Round Washers	10
8	Hex Nuts	10
9	Small Machine Screws	2