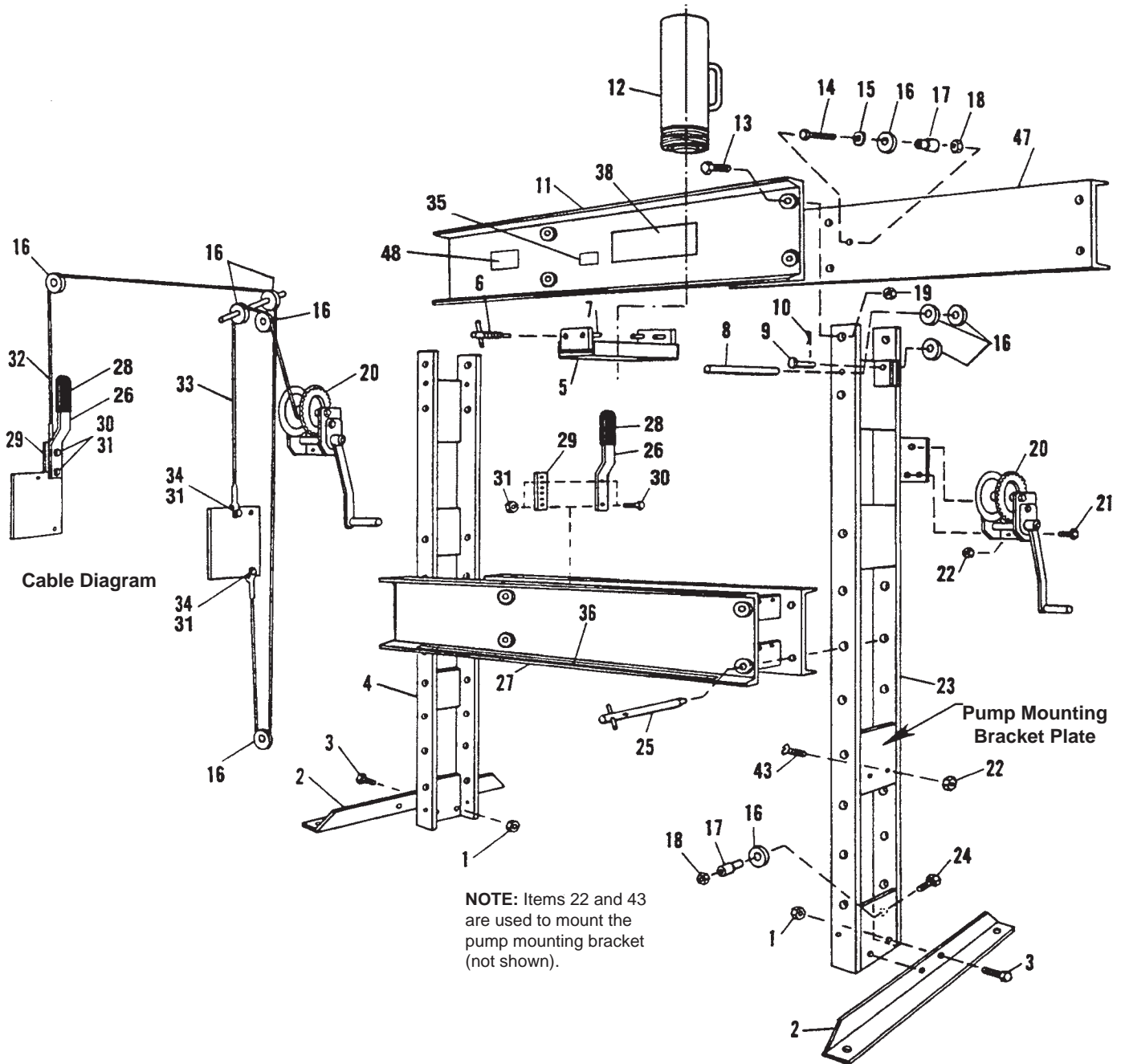


Parts List for:

1826
1826A

Hydraulic Shop Press

Maximum Capacity: 25 Tons

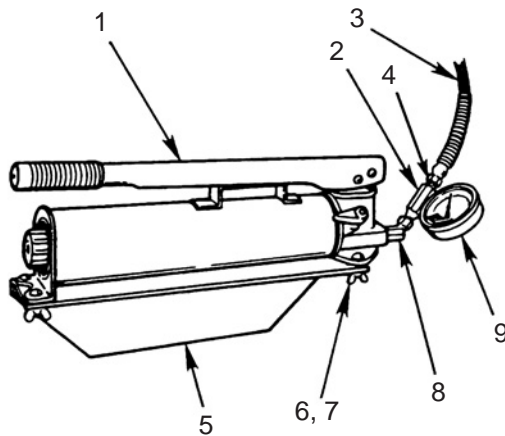


Parts List

Item No.	Part No.	No. Req'd	Description	Item No.	Part No.	No. Req'd	Description
-	61275	1	Press Frame (Complete frame only.)	22	10204	5	Hex Nut (5/8-16 UNC) (1826)
1	10208	4	Hex Nut (1/2-18 UNC)	23	10204	3	Hex Nut (5/8-16 UNC) (1826A)
2	304485	2	Angle Foot	24	42466	1	Right-hand Upright
3	11624	4	Hex Hd. Cap Screw (1/2-13 UNC x 1 1/2-in. Lg.)	25	10089	1	Hex Hd. Cap Screw (1/2-13 UNC x 2 1/2-in. Lg.)
4	42462	1	Left-hand Upright	26	25840	4	Pin Assembly
5	42412	1	Plate	27	38579	1	Handle
6	25825	1	Adjusting Screw	28	51510	1	Lower Bolster
7	10611	3	Roll Pin (3/8-in. dia. x 1 1/2-in. Lg.)	29	17241	1	Handle Grip
8	202469	1	Pulley Axle	30	201929	1	Cable Adjuster Strap
9	16654	1	Clevis Pin	31	10017	2	Hex Hd. Cap Screw (1/4-20 UNC x 1-in. Lg.)
10	10472	1	Cotter Pin	32	12809	4	Locknut (1/4-20 UNC)
11	32578	1	Upper Front Bolster	33	202473	1	Press Cable
12	52025	1	25-Ton Hydraulic Cylinder	34	204728	1	Winch Cable
13	12687	8	Hex Hd. Cap Screw (7/8-9 UNC x 2 1/4-in. Lg.)	35	10019	2	Hex Hd. Cap Screw (1/4-20 UNC x 1 1/4-in. Lg.)
14	12896	1	Hex Hd. Cap Screw (1/2-13 x 2 1/4-in. Lg.)	36	206043	1	Instruction Decal
15	12004	1	SAE Washer (1/2-in. bolt)	38	46896	1	Warning Decal
16	16653	5	Pulley (2 1/2-in. dia.)	43	14601	1	25-Ton Press Decal
17	202468	2	Spacer	47	10189	2	Flat Hd. Machine Screw (Used on 1826 only)
18	15013	2	Locknut (1/2-13 UNC)	48	33335	1	Upper Rear Bolster
19	10219	8	Hex Nut (7/8-9 UNC)	49	14401	1	Open Throat Decal
20	18895-1	1	Winch		12004	4	Washer (Not shown, used with Item No. 1)
21	10049	3	Hex Hd. Cap Screw (5/8-16 UNC x 1-in. Lg.)				

Hand Pump

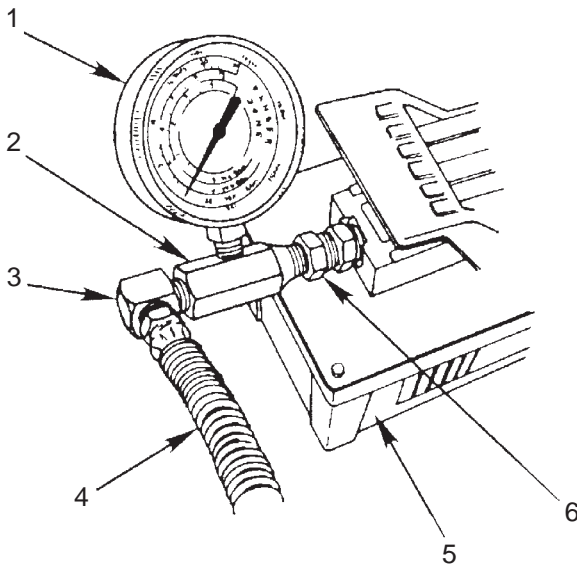
(Used on 1826)



Item No.	Part No.	No. Req'd	Description
1	4016	1	Hand Pump
2	24815	1	Tee Adapter
3	303563	1	Hydraulic Hose
4	10469	1	Straight Fitting
5	42733	1	Pump Mounting Bracket
6	10590	3	Wing Nut
7	12680	3	Thumb screw
8	10648	1	45° Elbow
9	16715	1	Gauge

Air Pump

(Used on 1826A)



Item No.	Part No.	No. Req'd	Description
1	16715	1	Gauge
2	24815	1	Tee Adapter
3	10474	1	90° Elbow
4	303563	1	Hydraulic Hose
5	4020	1	Air Pump
6	10469	2	Straight Fitting

Parts List for:

51426

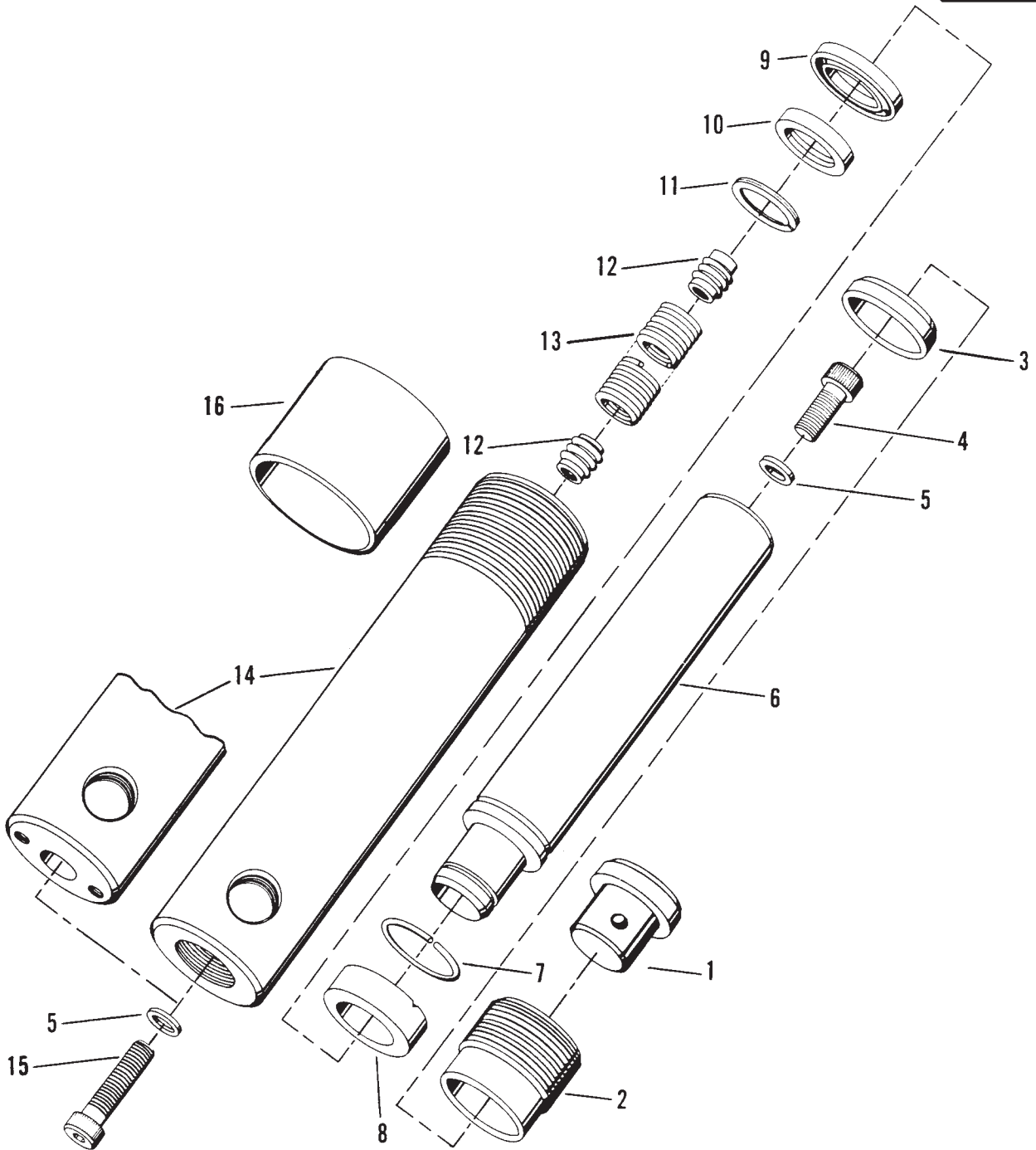
52025

58428

58429

**SINGLE-ACTING, SPRING RETURN
HYDRAULIC CYLINDER**
Max. Capacity: 25.8 Tons at 10,000 PSI

To Parts
List



Item No.	Part No.	No. Req'd	Description
2	36085	1	Retainer Nut (Torque to 90/100 ft. lbs.)
3	*16085	1	Rod Wiper
	†205716	1	Rod Wiper
4	10053	1	Soc. Hd. Cap Screw (3/8-16 X 1-1/4 lg.; Torque to 400/425 in. lbs.)
5	*†12042	2	Copper Washer
6	42181	1	Piston Rod (For 51426 & 58428)
	42183	1	Piston Rod (For 52025 & 58429)
7	201447	1	Retaining Ring
8	201352	1	Piston Head (Assemble with groove toward shoulder)
9	*15915	1	U-cup Piston Seal
	†205705	1	U-cup Piston Seal
10	201353	1	Slip Retainer
	†206556	1	U-cup Backup Washer
11	*16084	1	Retaining Ring
12	201417	2	Spring Retainer (See diagram below)
13	201448	1	Extension Spring (For 51426 & 58428)
	201450	1	Extension Spring (For, 52025 & 58429)
14	58010	1	Cylinder Body (For 51426)
	51076	1	Cylinder Body (For 58428)
	51078	1	Cylinder Body (For 52025 & 58429)
15	11531	1	Soc. Hd. Cap Screw (3/8-16 X 2" lg.; Torque to 400/425 in. lbs.)
16	36147	1	Thread Protector (For 58428 & 58429)
17	201412	1	Thread Adapter Assembly (For 51426 & 52025)

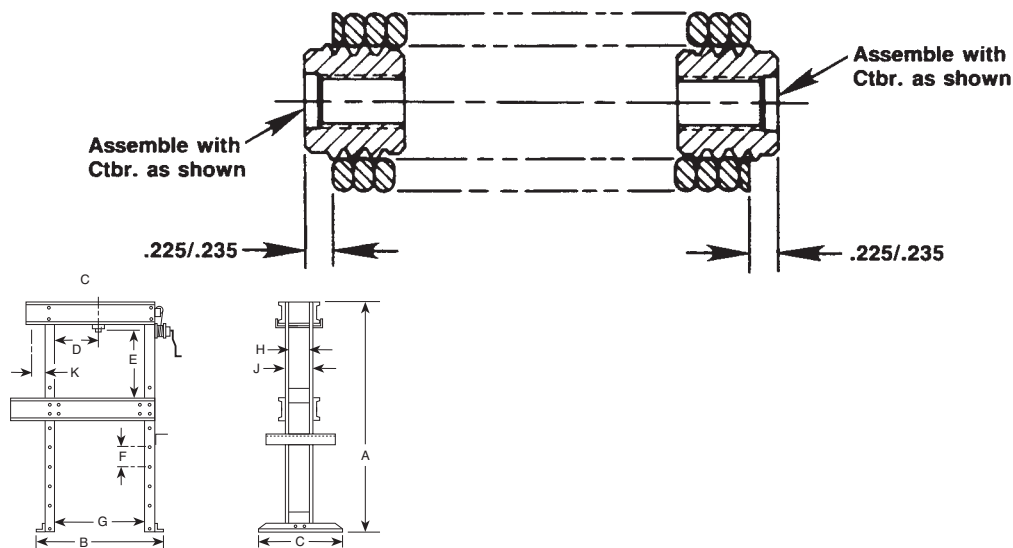
PARTS INCLUDED BUT NOT SHOWN

25600	1	Ram Half Coupler (For 58428 & 58429)
11127	1	Pressure Plug (For 51426 & 52025)
420732	1	Full Coverage Decal (For 58428)
420733	1	Full Coverage Decal (For 58429)
*37782	1	Warning Decal (For 52025)
†19526	1	O-ring (1" X 3/4 X 1/8, -210; for coupler)
†205724	1	Decal (Viton seals)



Part numbers marked with an asterisk (*) are contained in Standard Repair Kit No. 300147.
Part numbers marked with a dagger (†) are contained in Viton Seal Kit No. 300213.

SPRING & RETAINER ASSEMBLY



1826A Press Specifications

A	B	C	D*	E	F	G	H	J	K	Floor Space
68"	43"	28"	3"-29"	6-7/8"-4-3/8"	4-1/2"	32"	5-1/2"	6-1/2"	7"	28" x 25-1/4"

*Lateral head movement. Frame shipped assembled.

Check out the collection of hydraulic tools & equipment we offer.