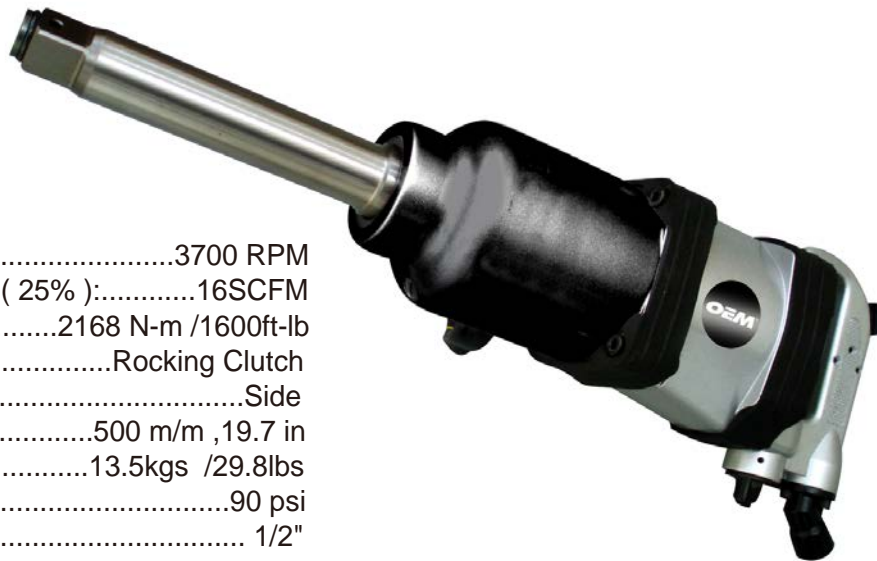




1" SQUARE DRIVE IMPACT WRENCH WITH 6" ANVIL

Model # 25811



SPECIFICATIONS:

FREE SPEED:.....3700 RPM
AVERAGE AIR CONSUMPTION(25%):.....16SCFM
MAX TORQUE:.....2168 N-m /1600ft-lb
CLUTCH TYPE:Rocking Clutch
EXHAUST:Side
LENGTH:500 m/m ,19.7 in
WEIGHT:13.5kgs /29.8lbs
AIR PRESSURE:.....90 psi
AIR INLET(NPT):..... 1/2"
SOUND PRESSURE:..... 112.2 db"
SOUND POWER:..... 123.2 db"

OIL TOOL DAILY BEFORE USE(See item 6 below)

IMPORTANT.
Please read carefully before operating tool

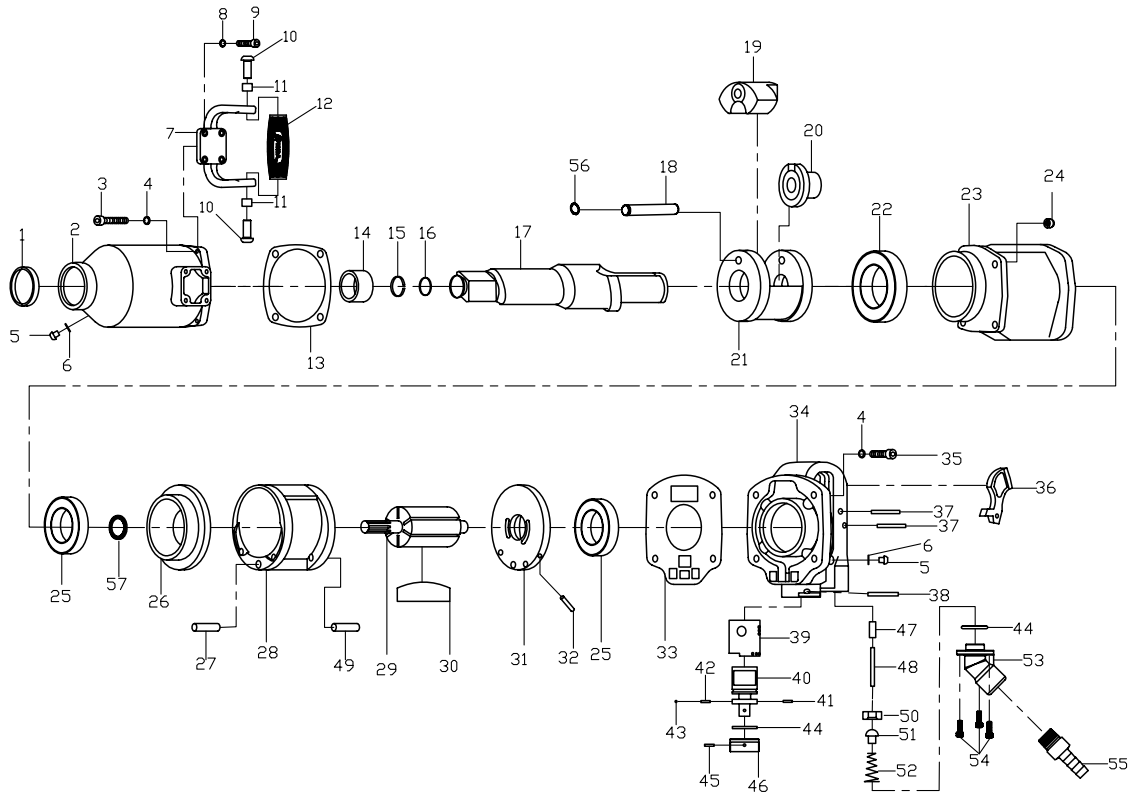
1. Be sure air is in "OFF" position when connecting tool to air supply.
2. Always wear approved eye protection when using air tools. If raising dust, wear a suitable mask.
3. Use only those accessories that are designed for use with air tools. For example, with impact wrenches do not use ordinary sockets. Use impact sockets for all- air tools.
4. Be sure to disconnect tool from air supply before changing accessories, Performing service on tool, and when not in use.
5. As with any air tool, use common sense when operating. Do not wear loose clothing or jewelry that could become caught by moving parts, causing injury. Operate tool a safe distance from yourself and others in the work area.
6. To ensure long life of the air tool be sure to oil the tool daily before using. Simply pour 4 drops of air tool oil into air inlet and run tool for a moment to clean.
7. Follow air source manufacturers directions for connection of regulators, filters, and other accessories to air source. Do not install "quick couplers" directly on tool as they put unnecessary strain on the air inlet threads possibly causing them to wear out prematurely. Instead, install them on a short length of air hose attached to the tool.

WARNING!
READ, UNDERSTAND AND FOLLOW ALL INSTRUCTIONS AND WARNINGS BEFORE OPERATING THIS TOOL. FAILURE TO DO SO MAY RESULT IN PERSONAL INJURY AND/OR PROPERTY DAMAGE AND WILL VOID WARRANTY.

OPERATING INSTRUCTIONS

To set the tool to desired torque, select a nut or screw of known tightness of the same size, thread pitch and thread condition as those on the job. Turn air regulator to low position, apply wrench to nut and gradually increase power (turn regulator to admit more air) until nut moves slightly in the direction it was originally set. The tool is now set to duplicate that tightness, note regulator setting for future use. When tightening nuts not requiring critical torque values, run nut up flush and then tighten an additional one-quarter to one-half turn (slight additional turning is necessary if gasket are being clamped). For additional power needed on disassembly work, turn regulator to its fully open position. This impact wrench is rated at 1-1/2" USS bolt size. Rating must be down graded for spring U bolts, tie bolts, long cap screws, double depth nuts, badly rusted conditions and spring fasteners as they absorb much of the impact power. When possible, clamp or wedge the bolt to prevent spring back.

Soak rusted nuts in penetrating oil and break rust seal before removing with impact wrench. If nut does not start to move in three to five seconds use a larger size impact wrench. Do not use impact wrench beyond rated capacity as this will drastically reduce tool life.



NO.	DESCRIPTION	Q'TY	NO.	DESCRIPTION	Q'TY
1	OIL SEAL	1	31	REAR PLATE	1
2	HOUSING	1	32	SET PIN	1
3	SCREW	4	33	REAR GASKET	1
4	WASHER	8	34	REAR COVER	1
5	CAP NUT	2	35	SCREW	4
6	O-RING	2	36	TRIGGER	1
7	HANDLE	1	37	SET PIN	2
8	WASHER	4	38	SET PIN	1
9	SCREW	4	39	BRASS SLEEVE	1
10	SCREW	2	40	PLUNGER	1
11	BUSHING	2	41	SET PIN	1
12	HAND GRIP	1	42	SPRING	1
13	SEAL PLATE	1	43	STEEL BALL	1
14	BUSHING	1	44	O-RING	2
15	RETAINER RING	1	45	SET PIN	1
16	O-RING	1	46	SWTTCH	1
17	ANVIL	1	47	SLEEVE	1
18	HAMMER PIN	1	48	PIN	1
19	HAMMER	1	49	SET PIN	1
20	DRIVE CAM	1	50	CUP PLUG	1
21	HAMMER CAGE	1	51	PLUG	1
22	BEARING	1	52	SPRING	1
23	HOUSING	1	53	AIR INLET	1
24	CAP UNT	4	54	SCREW	3
25	BEARING	2	55	INLET SCREW	1
26	FRONT PLATE	1	56	RETAINER RING	1
27	SET PIN	1	57	OIL SEAL	1
28	CYLINDER	1			
29	ROTOR	1			
30	ROTOR BLADE	6			