

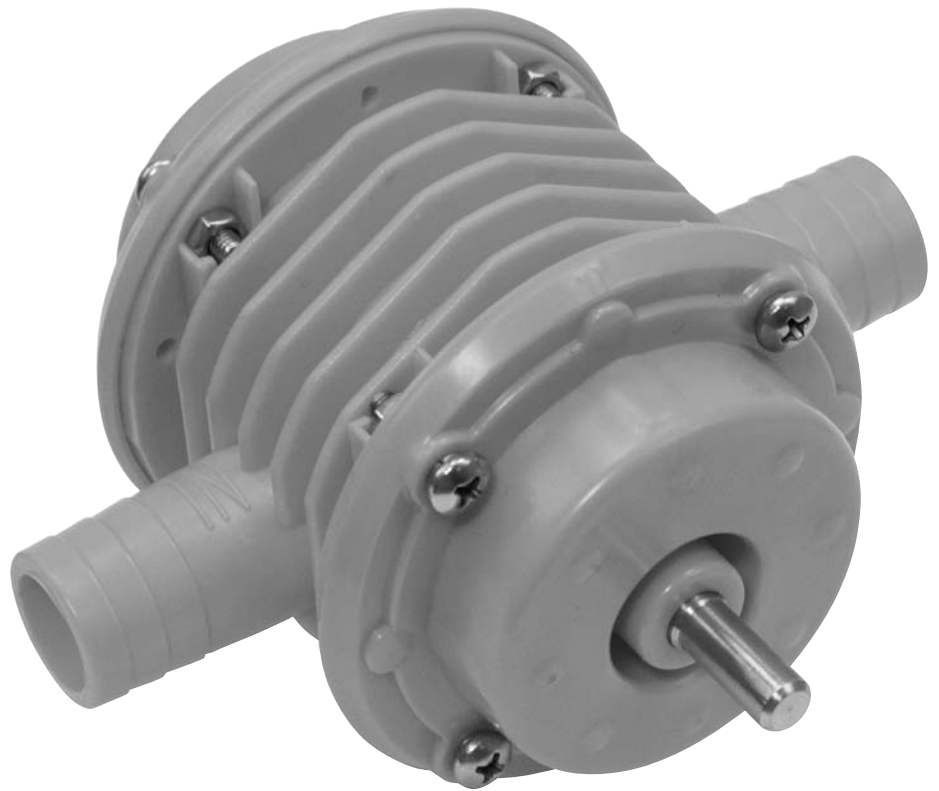
Please read and save these instructions. Read through this owner's manual carefully before using product. Protect yourself and others by observing all safety information, warnings, and cautions. Failure to comply with instructions could result in personal injury and/or damage to product or property. Please retain instructions for future reference.



MULTIPURPOSE DRILL POWERED PUMP

UNPACKING

After unpacking unit, inspect carefully for any damage that may have occurred during transit. Check for loose, missing, or damaged parts. If any damage is observed, a shipping damage claim must be filed with carrier. Do not use Drill Powered Pump if broken, bent, cracked or damaged parts (including labels) are noted. Any Drill Powered Pump that appears damaged in any way, operates abnormally or is missing parts should be removed from service immediately. If you suspect that the Drill Powered Pump was subjected to a shock load (a load that was dropped suddenly, unexpectedly, etc.) immediately discontinue use until it has been checked by a factory authorized service center.



WARNING

This is the safety alert symbol. It is used to alert you to potential personal injury hazards. Obey all safety messages that follow this symbol to avoid possible injury or death.



MULTIPURPOSE DRILL POWERED PUMP

Thank you very much for choosing an OEM-Tools Product!

For future reference, please complete the owner's record below:

Model: _____ **Purchase Date:** _____

Save the receipt, warranty and these instructions. It is important that you read the entire manual to become familiar with this product before you begin using it. This machine is designed for certain applications only. OEM-Tools cannot be responsible for issues arising from modification. We strongly recommend this machine is not modified and/or used for any application other than that for which it was designed. If you have any questions relative to a particular application, DO NOT use the machine until you have first contacted OEM-Tools to determine if it can or should be performed on the product.

For technical questions please call 1-866-458-2472.



IMPORTANT INSTRUCTIONS AND SAFETY RULES

1. Know your tool. Read this manual carefully. Learn the tool's applications and limitations, as well as, potential hazards specific to it.
2. Keep work area clean and well lit. Cluttered or dark work areas invite accidents.
3. Keep children away. All children should be kept away from the work area. Never let a child handle a tool without strict adult supervision.
4. Do not operate this tool if under the influence of alcohol or drugs. Read warning labels on prescriptions to determine if your judgment or reflexes are impaired while taking drugs. If there is any doubt, do not attempt to operate.
5. Use safety equipment. Eye protection should be worn at all times when operating this tool. Use ANSI approved safety glasses. Everyday eyeglasses are NOT safety glasses. Dust mask, non-skid safety shoes, hard hat or hearing protection should be used in appropriate conditions.
6. Wear proper apparel. Loose clothing, gloves, neckties, rings, bracelets or other jewelry may present a potential hazard when operating this tool. Keep all apparel clear of the tool.
7. Don't overreach. Keep proper footing and balance at all times when operating this tool.
8. Check for damage. Check your tool regularly. If part of the tool is damaged it should be carefully inspected to make sure that it can perform its intended function correctly. If in doubt, the part should be repaired. Refer all servicing to a qualified technician. Consult your dealer for advice.
9. Keep away from flammables. Do not attempt to operate this tool near flammable materials or combustibles. Failure to comply may cause serious injury or death.
10. Store idle tools out of the reach of children and untrained persons. Tools may be dangerous in the hands of untrained users.
 - Maintain tools with care.
 - Keep tools dry and clean.
 - Properly maintained tools are less likely to bind and are easier to control. Do not use a damaged tool. Tag damaged tools "Do not use" until repaired.
 - Check for misalignment or binding of moving parts, breakage of parts, and any other condition that may affect the tool's operation.
 - If damaged, have the tool serviced before using. Many accidents are caused by poorly maintained tools.
 - Use only accessories that are recommended by the manufacturer for your model. Accessories that may be suitable for one tool may become hazardous when used on another tool.
 - Tool service must be performed only by qualified repair personnel. Service or maintenance performed by unqualified personnel could result in a risk of injury.
 - When servicing a tool, use only identical replacement parts. Use of unauthorized parts or failure to follow maintenance instructions may create a risk of injury.
 - Maintain a safe working environment. Keep the work area well lit. Make sure there is adequate surrounding workspace. Keep the work area free of obstructions, grease, oil, trash, and other debris. Do not use this product in a damp or wet location.
 - Maintain labels and nameplates on this product. These carry important information. If unreadable or missing, contact OEM for a replacement.
 - Keep the handle dry, clean, and free from brake fluid, oil, and grease.



MULTIPURPOSE DRILL POWERED PUMP

- Before use, read and understand all warnings, safety precautions, and instructions as outlined in the vehicle manufacturer's service manual. It is beyond the scope of this manual to properly describe the correct procedure and test data for each vehicle.
- Always perform vehicle service in a properly ventilated area. Never run an engine without proper ventilation for its exhaust. Stop work and take necessary steps to improve ventilation in the work area if you develop momentary eye, nose, or throat irritation as this indicates inadequate ventilation.
- Engine parts that are in motion and unexpected movement of a vehicle can injure or kill. When working near moving engine parts, wear snug fit clothing and keep hands and fingers away from moving parts. Keep hoses and tools clear of moving parts. Always stay clear of moving engine parts. Hoses and tools can be thrown through the air if not kept clear of moving engine parts. The unexpected movement of a vehicle can injure or kill. When working on vehicles always set the parking brake or block the wheels.
- Be alert for hot engine parts to avoid accidental burns.
- If you drove your car recently, fluids could be very hot. Allow at least 2 hours before you handle any fluids. Oil and Coolant burns are very dangerous.
- Avoid accidental fire and/or explosion. Do not smoke near engine fuel and battery components.
- The warnings, precautions, and instructions discussed in this manual cannot cover all possible conditions and situations that may occur. The operator must understand that common sense and caution are factors which cannot be built into this product, but must be supplied by the operator.
- For safety purposes and the prevention of damage to expensive components it is advised that the user have an understanding of basic automotive repair and a working knowledge of automotive systems.
- We believe the information contained herein to be reliable. However, general technical information is given by us without charge and the user shall employ such information at his own discretion and risk. We assume no responsibility for results or damages incurred from the use of such information in whole or in part. Always refer to specific instructions and technical information supplied by vehicle manufacturer.
- The manufacturer declines any and all responsibility for damage to vehicles or components if said damage is the result of unskillful handling by the operator or of failure to observe the basic safety rules set forth in the instruction manual.

DISPOSAL

At the end of the useful life of the Drill Powered Pump, dispose of the components according to all state, federal, and local regulations.

PURPOSE

Designed to be used in combination with a corded or cordless drill to transfer the following liquids: fresh water, sea water, organic solvents, motor oil, heating oil, insecticides, and liquid fertilizers.



It is the pump owner's responsibility to properly handle, recycle and dispose of products and ensure that those who use this Drill Powered Pump to transfer fluids do so in a safe and environmentally responsible manner.

Be sure to follow the liquid manufacturer's or supplier's recommendations for safe storage and handling.

Ensure that all containers of liquids are properly marked.

Never use with concentrated acids or volatile, flammable liquids such as gasoline, nor with liquids which leave residue or solidify on drying.

When using a Corded Drill make sure to avoid contact with liquids as an electrical shock hazard may exist.

Be aware that sparks from a Drill Motor can serve as an ignition source for flammable or explosive vapors.



MULTIPURPOSE DRILL POWERED PUMP

PRODUCT SPECIFICATIONS

- Self Priming
- Delivery rate: without the inlet filter, delivery around 40-50 liters/min (550-650 gallons/hour.) With the filter in use, delivery rate will be slightly reduced.
- Delivery pressure: Approximately (28psi) at ground level.
- Maximum Inlet Head: up to 2 meters (6feet) vertically above surface of liquid to be pumped.
- Maximum Pumping Head (Outlet): up to 15 meters (50feet) vertically above pump, when pumping water.

(Note: These performance figures will vary according to the type of fluid and operating speed of the drill).

- Requires minimum 350 Watt Drill Motor.
- Max RPM: 3000

Lever Type Barrel Pump		
Figure	Description	Quantity
A	Pump Housing	1
B	Outlet	1
C	Inlet	1
D	Shaft	1

OPERATING INSTRUCTIONS

WARNING Always wear safety glasses and gloves!

1. Connect Drill Motor to Shaft.
2. Attach Inlet and Outlet Hoses.
3. For priming, on start-up, the pump should be as close as possible to the liquid. When pumping, the pump may be raised (but not more than 2 meters above the surface of the liquid).
4. Make sure inlet hose is fixed or weighted so that it remains in the liquid to be pumped.
5. Avoid severe bends or kinks in the inlet and supply pipes.

MAINTENANCE

1. Always store the Drill Powered Pump in a well-protected area where it will not be exposed to inclement weather, corrosive vapors, abrasive dust, or any other harmful elements.
2. If the nylon rotor blade tips become worn, they may be reversed to expose the unworn surface.
3. After use, the pump should be cleaned by pumping through water to which a little detergent has been added, followed by clean water to rinse.

