

NIGHTSTICK
Tough, Durable, Affordable™

Tactical Flashlights



These compact polymer tactical flashlights use a CREE® LED rated at 180 lumens that works in conjunction with a high-efficiency deep parabolic reflector to create a usable beam rated at 190 meters. The tail-cap switch provides momentary or constant-on functionality. Power comes from a pair of included CR-123 Lithium batteries.



TAC-300B

180 Lumens

- 3 Hours run-time
- Momentary or constant-on
- Beam distance rated at 190 meters
- Glass-filled nylon polymer housing
- Powered by 2 – CR-123 Lithium batteries (included)



TAC-300Y
TAC-300T



TAC 300 series



High-efficiency deep parabolic reflector

Tactical Flashlights

Large textured tail-switch

FEATURES: ALL MODELS

- Cree® LED technology – 50,000 + hours LED life
- Momentary or constant-on flashlight
- Sharp focused beam
- Glass-filled nylon polymer housing
- Aircraft-grade 6061-T6 aluminum tail-cap with type III hard anodized finish
- Non-slip grip
- Large textured tail-switch
- 1" Handle diameter fits most scope/flashlight mounts
- 1.25" Head diameter accepts 3rd party filters
- Waterproof
- Impact & chemical resistant
- Meets the requirements of NFPA-1971-8.6 (2013)
- Powered by 2 – CR-123 Lithium batteries (included)
- Removable pocket clip
- Available in black, tan & yellow
- Limited Lifetime Warranty*

SPECIFICATIONS

- Lumens: 180
- Run-time: 3 hours
- Beam distance: 190 meters
- Water rating: IP-X7 waterproof
- Drop rating: 2 meters
- Length: 5.5in, head diameter: 1.25in, handle diameter: 1.035in, weight: 4.4oz

FL 1 STANDARD		
180 LUMENS	3h	190m
9150cd	2m	1m

INCLUDED

- Flashlight
- Two CR-123 Lithium batteries
- Removable metal pocket clip



Weapon mountable
(400B-RPS required)

Handheld



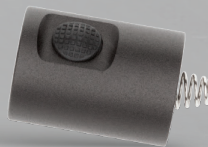
MODELS/ACCESSORIES



Safety Cones



Remote Pressure Switch



Side Switch



Spare Batteries

Model	Description	UPC 0 17398
TAC-300B	Black	80219 2
TAC-300T	Tan	80220 8
TAC-300Y	Yellow	80221 5
200-RCONE	Red safety cone	80131 7
200-YCONE	Yellow safety cone	80132 4
400B-RPS	Remote pressure switch	80130 0
400B-SS	Side switch	80141 6
CR-123-10	CR-123 Lithium batteries (10 pack)	80112 6