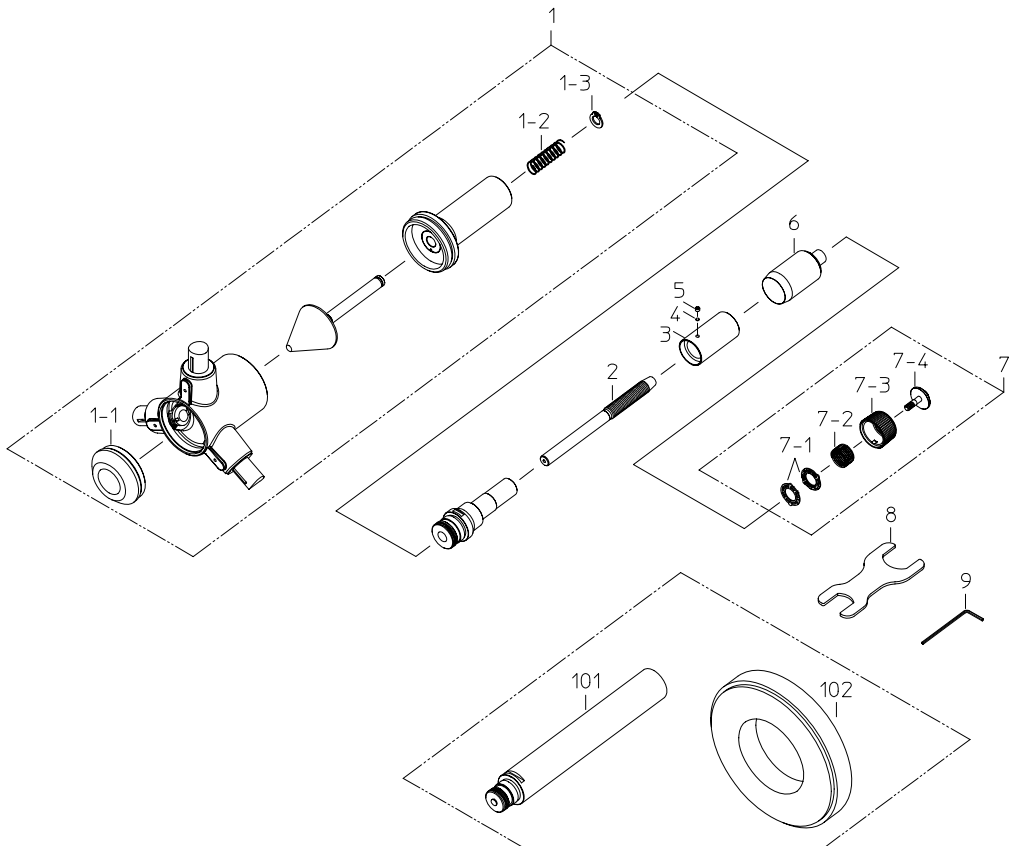


**HOLTEST(TYPE II )  
Series368**

Ref. No. 368-29-2005-APR



No. 368-29

KEY NO.	PART NAME	CATEGORY	CODE NO.				COMMENTS
			368-774	368-775	368-776	368-777	
			HT2-125R	HT2-150R	HT2-175R	HT2-200R	
1	HEAD ASSY (MM)	Y1	04AZA895	04AZA896	04AZA897	04AZA898	
	HEAD ASSY (INCH)	Y1	04AZA903	04AZA904	04AZA905	04AZA906	
1-1	CAP ASSY (MM)		04AZA815	04AZA816	04AZA817	04AZA818	
	CAP ASSY (INCH)		04AZA823	04AZA824	04AZA825	04AZA826	
1-2	SPRING, CONE	Y1	04AAB103				
1-3	SNAP RING	Y1	04AAB104				
2	SPINDLE (MM)	Y1	04AAB032				
	SPINDLE (INCH)	Y1	04AAB033				
3	OUTER SLEEVE (MM)	Y1	04AAB034	04AAB035	04AAB036	04AAB037	
	OUTER SLEEVE (INCH)	Y1	04AAB042	04AAB043	04AAB044	04AAB045	
4	SPACER		211576				
5	SET SCREW		208259				
6	THIMBLE (MM)	Y1	04AAB050				
	THIMBLE (INCH)	Y1	04AAB051				
7	RATCHET ASSY	Y1	04AZA946				
7-1	PLATE, RATCHET	Y1	04AAA941				
7-2	SPRING, RATCHET	Y1	04AAB105				
7-3	SLEEVE, RATCHET	Y1	04AAB362				
7-4	SCREW		04AAB052				
8	SPANNER		04GAA858				
9	HEX-SPANNER		202863				
	[OPTION]						
101	EXTENSION ROD (150mm)		952623				
102	SET RING (MM)		177-296	177-298	177-300	177-302	
	SET RING (INCH)		177-297	177-299	177-301	177-303	
	[PACKING]						
	HOUSING CASE		453761		453762		
	PEPER CASE		04MAA252		04MAA253		

**368** HOLTEST(TYPE II )  
Series368

Ref. No. 368-29-2005-APR

**368**