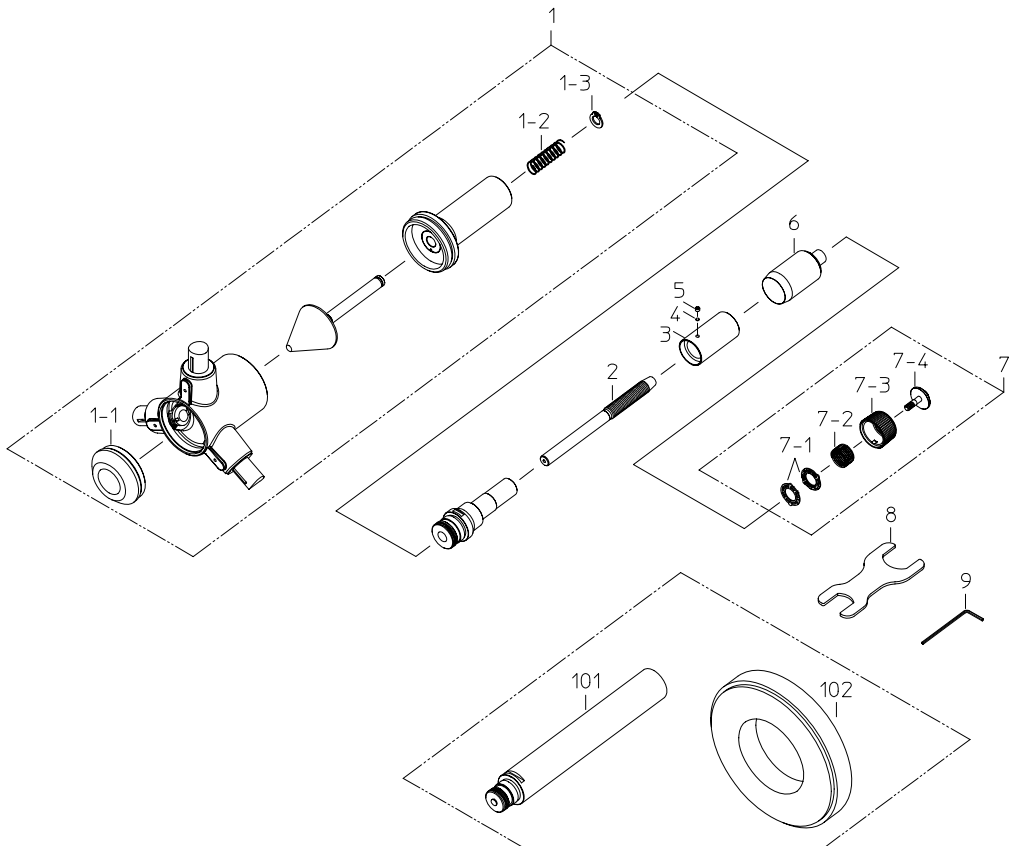


**HOLTEST(TYPE II )  
Series368**

Ref. No. 368-29-2005-APR



No. 368-29

KEY NO.	PART NAME	CATEGORY	CODE NO.				COMMENTS
			368-774	368-775	368-776	368-777	
			HT2-125R	HT2-150R	HT2-175R	HT2-200R	
1	HEAD ASSY (MM)	Y1	04AZA895	04AZA896	04AZA897	04AZA898	
	HEAD ASSY (INCH)	Y1	04AZA903	04AZA904	04AZA905	04AZA906	
1-1	CAP ASSY (MM)		04AZA815	04AZA816	04AZA817	04AZA818	
	CAP ASSY (INCH)		04AZA823	04AZA824	04AZA825	04AZA826	
1-2	SPRING, CONE	Y1		04AAB103			
1-3	SNAP RING	Y1		04AAB104			
2	SPINDLE (MM)	Y1		04AAB032			
	SPINDLE (INCH)	Y1		04AAB033			
3	OUTER SLEEVE (MM)	Y1	04AAB034	04AAB035	04AAB036	04AAB037	
	OUTER SLEEVE (INCH)	Y1	04AAB042	04AAB043	04AAB044	04AAB045	
4	SPACER			211576			
5	SET SCREW			208259			
6	THIMBLE (MM)	Y1		04AAB050			
	THIMBLE (INCH)	Y1		04AAB051			
7	RATCHET ASSY	Y1		04AZA946			
7-1	PLATE, RATCHET	Y1		04AAA941			
7-2	SPRING, RATCHET	Y1		04AAB105			
7-3	SLEEVE, RATCHET	Y1		04AAB362			
7-4	SCREW			04AAB052			
8	SPANNER			04GAA858			
9	HEX-SPANNER			202863			
	[OPTION]						
101	EXTENSION ROD (150mm)			952623			
102	SET RING (MM)		177-296	177-298	177-300	177-302	
	SET RING (INCH)		177-297	177-299	177-301	177-303	
	[PACKING]						
	HOUSING CASE		453761		453762		
	PEPER CASE		04MAA252		04MAA253		

**368** HOLTEST(TYPE II )  
Series368

Ref. No. 368-29-2005-APR

**368**