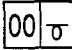




# SERVICE PARTS LIST

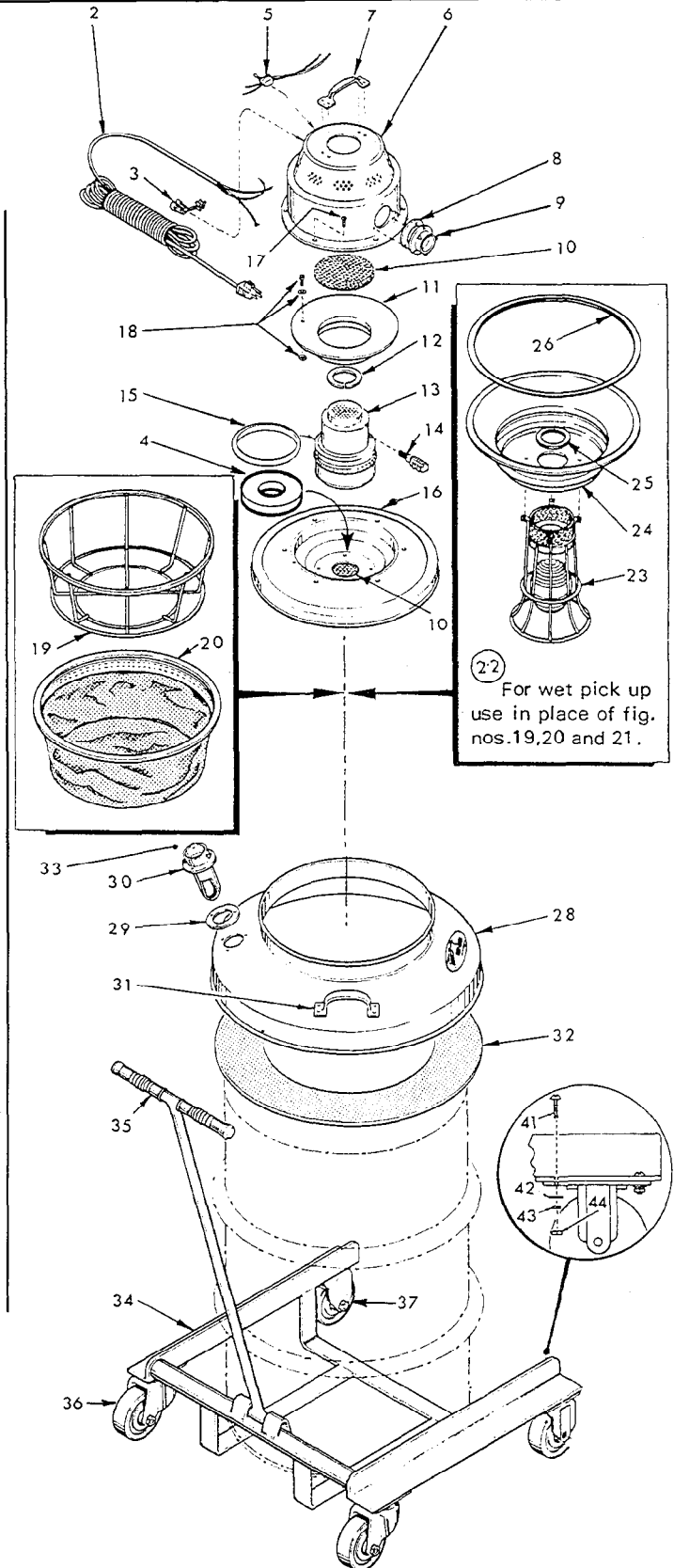
BULLETIN NO.  
54-05-0500

SPECIFY CATALOG NO. AND SERIAL NO. WHEN ORDERING PARTS		REVISED BULLETIN	DATE
VACUUM CLEANER MOTOR HEAD			Feb. '95
CATALOG NO. 8945	STARTING SERIAL NO. SERIES 1	WIRING INSTRUCTION	

EXAMPLE:  
 Component Parts (Small #)  
 Are Included When Ordering  
 The Assembly (Large #).

FOR CAT. NO. 8945-2 (230V) VACUUM CLEANER  
 MOTOR HEAD USE: 23-30-0111 MOTOR

FIG.	PART NO.	DESCRIPTION OF PART	NO. REQ.
1	-----	Cat. No. 8945 Motor Head (Includes Fig. Nos. 2 thru 18)	(1)
2	22-64-0700	Cord Set	(1)
3	44-76-0020	Cord Protector	(1)
★ 4	43-44-0500	Bottom Motor Gasket	(1)
5	23-66-0870	Switch	(1)
6	42-92-0350	Motor Cover Assembly (Includes Fig. Nos. 7 thru 10)	(1)
7	43-62-0510	Handle	(1)
★ 8	43-44-0370	Gasket	(1)
9	42-86-0070	Connector	(1)
10	45-03-0120	Perforated Aluminum Screen	(1)
11	42-04-0450	Motor Adapter	(1)
12	43-44-0470	Motor Top Gasket	(1)
13	23-30-0111	Large Bypass Motor Assembly	(1)
14	22-18-435	Carbon Brush and Holder (Set)	(1)
★ 15	43-44-0475	Top Motor Gasket	(1)
16	42-92-0270	Container Cover with Screen	(1)
17	06-85-2000	12 x 1/2 Phillips Type B Pan Hd. Screw	(6)
18	06-05-0010	Ground Screw Assembly	(1)
19	49-90-0270	Wire Frame	(1)
20	49-90-0260	Cloth Filter and Gasket	(1)
21	49-90-0320	Dacron Filter Bag (Not Shown)	(1)
22	49-90-1610	Wet Pick-Up Conversion Pan Assembly (Includes Fig. Nos. 23 thru 26)	(1)
23	42-46-0110	Float Cage Assembly	(1)
24	44-54-0050	Wet Pan Adapter	(1)
25	43-44-0340	Shut Off Gasket	(1)
26	43-44-0330	Gasket	(1)
27	49-90-1590	16" Drum Adapter Assembly (Includes Fig. Nos. 28 thru 33)	(1)
28	42-04-0430	Drum Adapter	(1)
29	43-44-0370	Inlet Gasket	(1)
30	42-86-0080	Inlet Connector Assembly	(1)
31	43-62-0500	Handle	(2)
32	43-44-0350	Gasket	(1)
33	43-33-0490	Elbow (Not Shown)	(1)
★ 34	49-90-1100	Four Wheel Drum Dolly (Includes Fig. Nos. 35 thru 44)	(1)
★ 35	43-62-0510	Handle Grip	(2)
★ 36	45-94-0300	5" Swivel Caster	(2)
★ 37	45-94-0305	5" Rigid Caster	(2)
★ 41	06-81-1810	1/4-20 Screw	(16)
★ 42	45-88-1870	Flat Washer	(16)
★ 43	06-97-4050	1/4 Split Lockwasher	(16)
★ 44	06-55-1525	1/4-20 Hex Nut	(16)





# SERVICE PARTS LIST

**BULLETIN NO.**  
**54-05-0501**

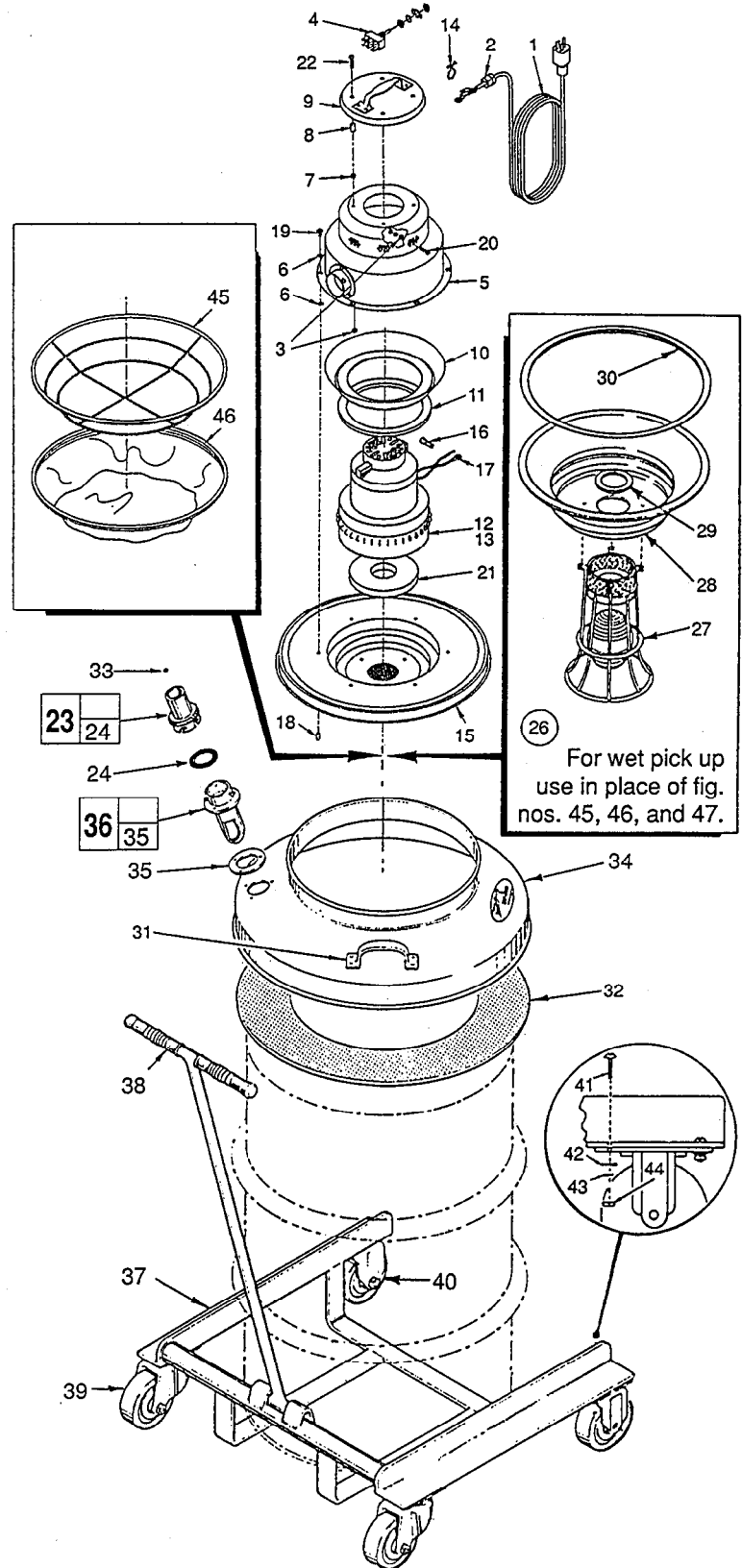
SPECIFY CATALOG NO. AND SERIAL NO. WHEN ORDERING PARTS		REVISED BULLETIN 54-05-0500	DATE June '96
<b>VACUUM CLEANER MOTOR HEAD</b>			
CATALOG NO.	8945	STARTING SERIAL NO.	642A
		WIRING INSTRUCTION <b>SEE REVERSE SIDE</b>	

**EXAMPLE:**  
Component Parts (Small #)  
Are Included When Ordering  
The Assembly (Large #).



Cat. No. 8945 Motor Head  
(Includes Fig. Nos. 1-24)

FIG.	PART NO.	DESCRIPTION OF PART	NO. REQ.
	1	22-64-0700 Cord Set	(1)
	2	44-76-0020 Strain Relief	(1)
★	3	06-55-3800 10-24 Hex Nut	(7)
	4	23-66-0870 Switch	(1)
★	5	42-92-1055 Dome Assembly	(1)
★	6	45-88-8680 #12 Internal Tooth Lockwasher	(2)
★	7	45-88-8695 .37 Dia. x .18 Nylon Spacer	(4)
★	8	45-88-8700 .37 Dia. x .56 Nylon Spacer	(4)
★	9	44-66-6175 Dome Cap With Handle	(1)
★	10	42-04-3595 Baffle	(1)
★	11	43-44-1025 Top Motor Gasket	(1)
★	12	23-30-0305 3 Stage Motor	(1)
★	13	22-18-0905 Carbon Brush and Holder (Set)	(1)
★	14	22-38-0170 Wire Tie	(1)
★	15	42-92-1060 Cover Assembly	(1)
★	16	23-71-0010 Wire Nut	(4)
★	17	23-74-1280 Terminal	(1)
★	18	44-76-0275 Screw Tip Protector	(6)
★	19	06-81-1815 12 x 1/2 Phillips Type B Pan Hd. Screw	(6)
★	20	06-81-1812 10-24 x 3/4" Phlp. Screw	(1)
★	21	43-44-1030 Bottom Motor Gasket	(1)
★	22	06-81-1825 10-24 x 1" Round Hd. Phlp. Screw	(4)
★	23	49-90-0150 Swivel Hose Connector	(1)
★	24	43-44-0275 Gasket	(1)
★	12-20-8900	Service Nameplate Kit	(1)
★	10-20-8900	Warning Label	(1)
★	10-05-5050	Conversion Label	(1)
26	49-90-1610	Wet Pick-Up Conversion Pan Assembly (Includes Fig. Nos. 27 thru 30)	(1)
	27	42-46-0110 Float Cage Assembly	(1)
	28	44-54-0050 Wet Pan Adapter	(1)
	29	43-44-0340 Shut Off Gasket	(1)
	30	43-44-0330 Gasket	(1)
	49-90-1590	16" Drum Adapter Assembly (Includes Fig. Nos. 31 thru 36)	(1)
31	43-62-0500	Handle	(2)
32	43-44-0350	Gasket	(1)
33	43-33-0490	Elbow (Not Shown)	(1)
34	42-04-0430	Drum Adapter	(1)
35	43-44-0370	Inlet Gasket	(1)
36	42-86-0080	Inlet Connector Assembly	(1)
37	49-90-1100	Four Wheel Drum Dolly (Includes Fig. Nos. 38 thru 44)	(1)
	38	43-62-0510 Handle Grip	(2)
	39	45-94-0300 5" Swivel Caster	(2)
	40	45-94-0305 5" Rigid Caster	(2)
	41	06-81-1810 1/4-20 Screw	(16)
	42	45-88-5220 Flat Washer	(16)
	43	06-97-4050 1/4 Split Lockwasher	(16)
	44	06-55-1525 1/4-20 Hex Nut	(16)
★	45	49-90-0275 Wire Frame	(1)
★	46	49-90-0265 Cloth Filter and Gasket	(1)
	47	49-90-0320 Dacron Filter Bag (Not Shown)	(1)





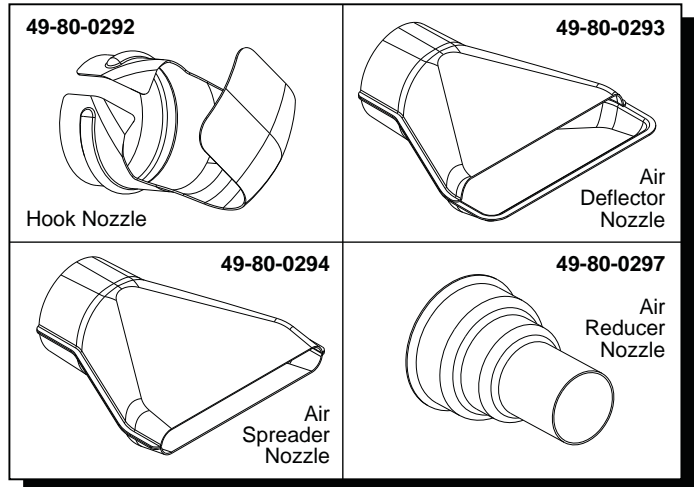
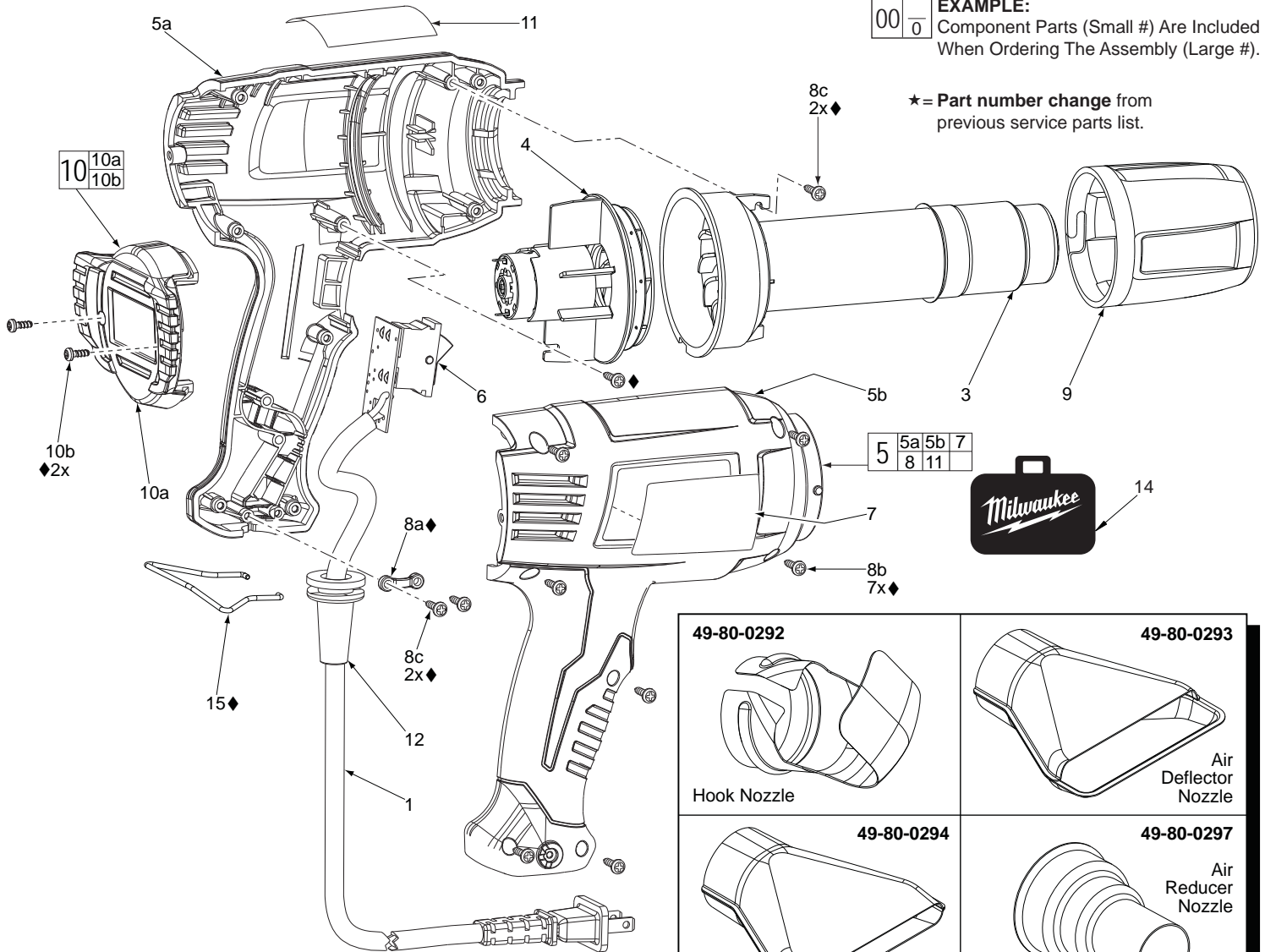
# SERVICE PARTS LIST

**BULLETIN NO.**  
**54-05-0642**

SPECIFY CATALOG NO. AND SERIAL NO. WHEN ORDERING PARTS		REVISED BULLETIN 54-05-0641	DATE Aug. 2013
<b>DOUBLE INSULATED HEAT GUN</b>			
CATALOG NO.	<b>8975-6</b>	SERIAL NUMBER	<b>731A</b>
		WIRING INSTRUCTION <b>See Reverse Side</b>	

**EXAMPLE:**  
Component Parts (Small #) Are Included  
When Ordering The Assembly (Large #).

★ = Part number change from  
previous service parts list.

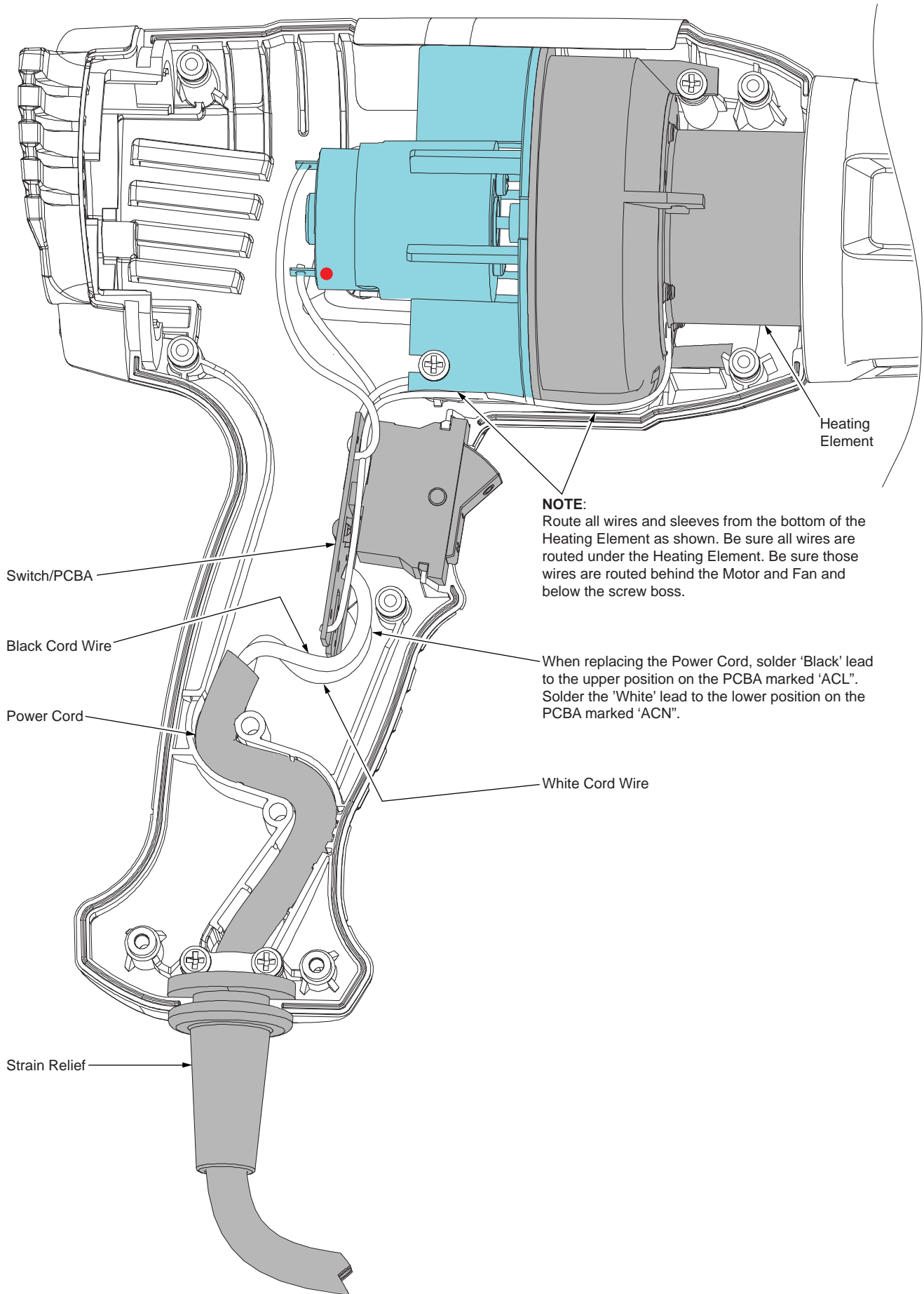


**Cat. No. 49-80-0300**  
**Heat Gun Accessory Assortment**  
Includes the four accessories listed above.

FIG.	PART NO.	DESCRIPTION OF PART	NO. REQ.
★ 1	22-64-8975	Cord Set	(1)
★ 3	-----	Heating Element Assembly	(1)
★ 4	14-46-8974	Motor and Fan Assembly	(1)
★ 5	14-46-8977	Handle Service Kit	(1)
★ 5a	-----	Left Handle Halve	(1)
★ 5b	-----	Right Handle Halve	(1)
★ 6	-----	Switch/PCBA	(1)
★ 7	12-20-8975	Service Nameplate Kit	(1)
★ 8	14-46-8979	Repair Service Kit (Includes all ♦ items)	(1)
★ 8a	-----	Cord Clamp	(1)
★ 8b	-----	M3 x 13 Phillips Pan Hd. Screw	(7)
★ 8c	-----	M3 x 13 Phillips Pan Hd. Screw	(4)
★ 9	44-90-8975	Nose Shield	(1)
★ 10	31-12-8975	End Cap Service Kit	(1)
★ 10a	-----	End Cap	(1)
★ 10b	-----	M3.5 x 8 Phillips Pan Hd. Screw	(2)
★ 11	10-20-0112	Warning Label	(1)
★ 12	44-76-8975	Strain Relief	(1)
★ 14	42-55-8975	Carrying Case	(1)
★ 15	-----	Wire Tool Support	(1)

**8 ♦ 14-46-8979 Repair Service Kit**  
Consists of:

Fig.	Description of Part	Where Used	Color	Qty.
10b	M3.5 x 8 Phillips Pan Hd. Screw	End Cap	Black	2
8b	M3 x 13 Phillips Pan Hd. Screw	Right Handle	Black	7
8c	M3 x 13 Phillips Pan Hd. Screw	Heating Element	Chrome	2
8c	M3 x 13 Phillips Pan Hd. Screw	Cord Clamp	Chrome	2
15	Wire Tool Support	Handle Halves	----	1
8a	Cord Clamp	Left Handle	----	1





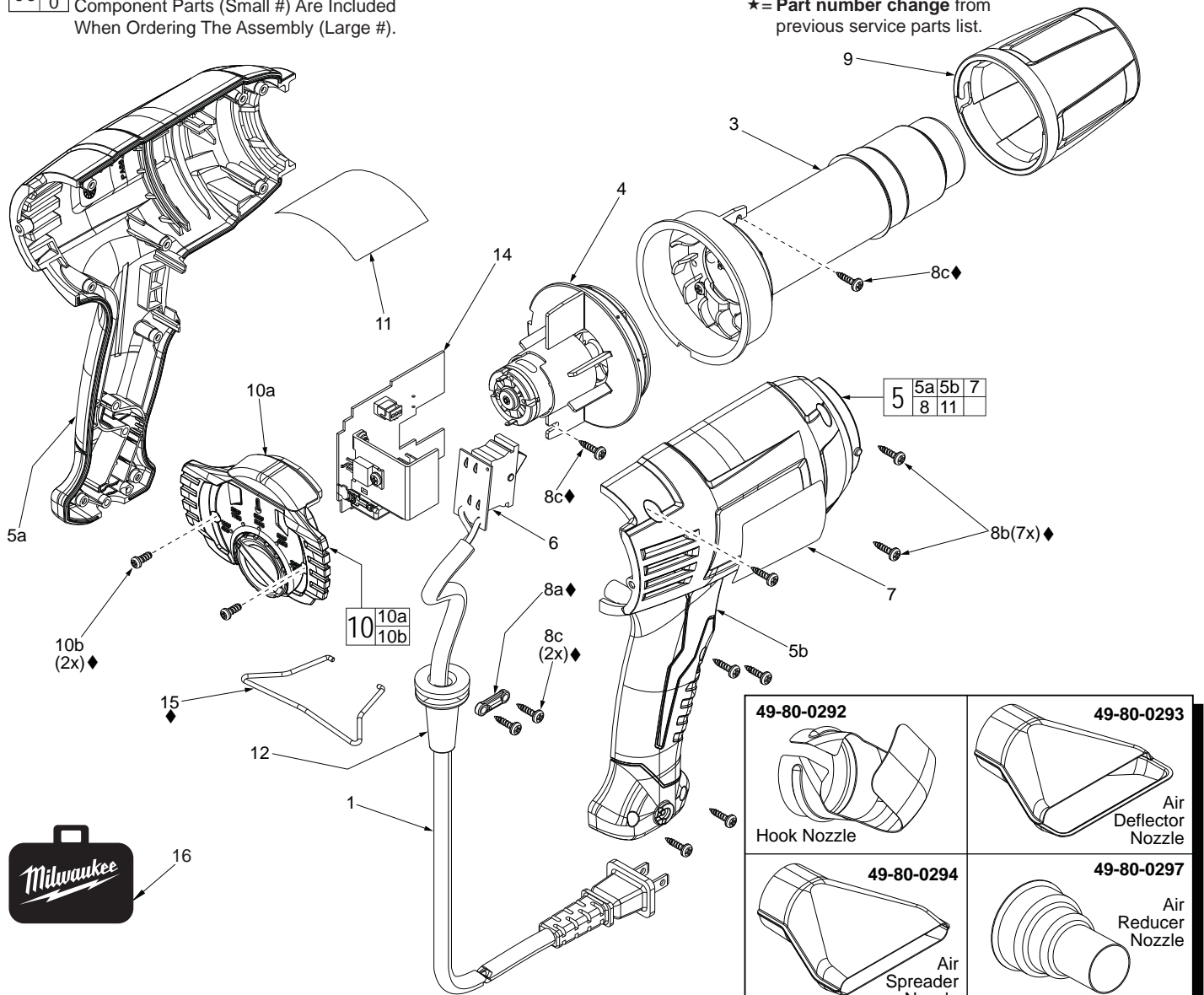
# SERVICE PARTS LIST

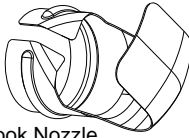
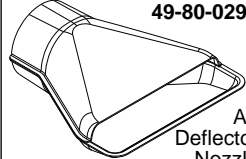
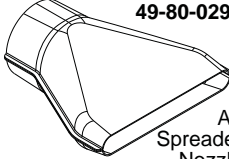
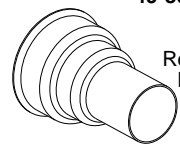
**BULLETIN NO.**  
54-05-0652

<b>SPECIFY CATALOG NO. AND SERIAL NO. WHEN ORDERING PARTS</b>			REVISED BULLETIN 54-05-0651	DATE Aug. 2013
<b>D.I. VARIABLE TEMPERATURE HEAT GUN</b>				
<b>CATALOG NO.</b>	<b>8977-20</b>	<b>SERIAL NUMBER</b>	<b>747A</b>	
			WIRING INSTRUCTION <b>See Reverse Side</b>	

**EXAMPLE:**  
Component Parts (Small #) Are Included  
When Ordering The Assembly (Large #).

★ = Part number change from  
previous service parts list.

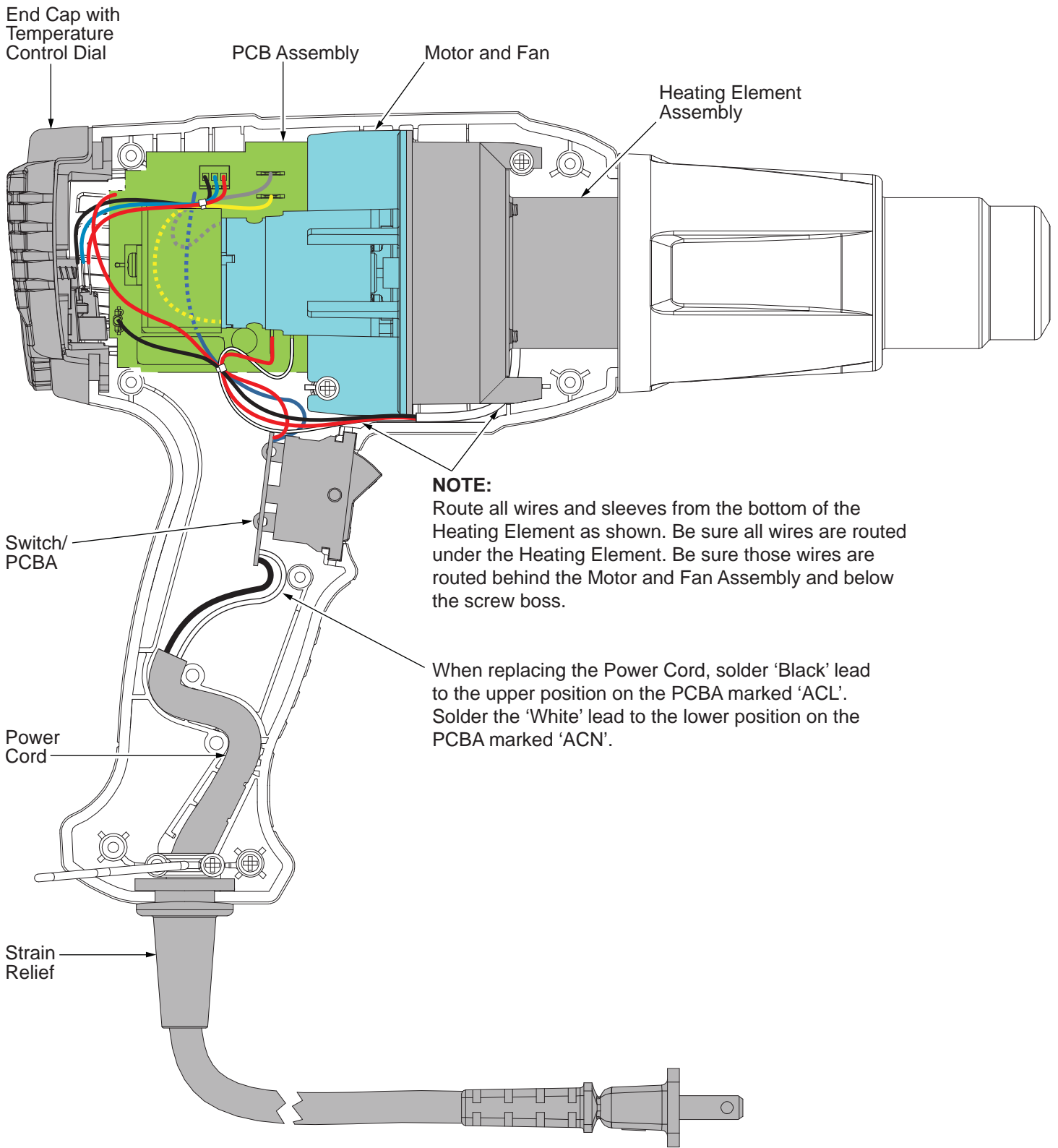


<b>49-80-0292</b>  Hook Nozzle	<b>49-80-0293</b>  Air Deflector Nozzle
<b>49-80-0294</b>  Air Spreader Nozzle	<b>49-80-0297</b>  Air Reducer Nozzle

**Cat. No. 49-80-0300**  
**Heat Gun Accessory Assortment**  
Includes the four accessories listed above.

FIG.	PART NO.	DESCRIPTION OF PART	NO. REQ.
★ 1	22-64-8975	Cord Set	(1)
★ 3	-----	Heating Element Assembly	(1)
★ 4	14-50-0435	Motor and Fan Assembly	(1)
★ 5	14-46-8977	Handle Service Kit	(1)
★ 5a	-----	Left Handle Halve	(1)
★ 5b	-----	Right Handle Halve	(1)
★ 6	-----	Switch/PCBA	(1)
★ 7	12-20-8975	Service Nameplate Kit	(1)
★ 8	14-46-8979	Repair Service Kit (Includes all ♦ items)	(1)
★ 8a	-----♦	Cord Clamp	(1)
★ 8b	-----♦	M3 x 13 Phillips Pan Hd. Screw	(7)
★ 8c	-----♦	M3 x 13 Phillips Pan Hd. Screw	(4)
★ 9	44-90-8975	Nose Shield	(1)
★ 10	31-12-8977	End Cap Service Kit	(1)
★ 10a	-----	End Cap	(1)
★ 10b	-----♦	M3.5 x 8 Phillips Pan Hd. Screw	(2)
★ 11	10-20-0112	Warning Label	(1)
★ 12	44-76-8975	Strain Relief	(1)
★ 14	-----	PCB Assembly	(1)
★ 15	-----♦	Wire Tool Support	(1)
★ 16	42-55-8975	Carrying Case	(1)

<b>8 ♦ 14-46-8979 Repair Service Kit</b>				
Consists of:				
Fig.	Description of Part	Where Used	Color	Qty.
10b	M3.5 x 8 Phillips Pan Hd. Screw	End Cap	Black	2
8b	M3 x 13 Phillips Pan Hd. Screw	Right Handle	Black	7
8c	M3 x 13 Phillips Pan Hd. Screw	Heating Element	Chrome	2
8c	M3 x 13 Phillips Pan Hd. Screw	Cord Clamp	Chrome	2
15	Wire Tool Support	Handle Halves	----	1
8a	Cord Clamp	Left Handle	----	1





# SERVICE PARTS LIST

**BULLETIN NO.**  
**54-05-0825**

<b>SPECIFY CATALOG NO. AND SERIAL NO. WHEN ORDERING PARTS</b>		REVISED BULLETIN	DATE
<b>3 - STAGE HEAT GUN with DISPLAY</b>			Dec. 2000
<b>CATALOG NO. 8988-20</b>	STARTING SERIAL NUMBER	<b>199A - 1001</b>	
		WIRING INSTRUCTION <b>See Reverse Side</b>	

**EXAMPLE:**  

00	0
----	---

 Component Parts (Small #) Are Included  
 When Ordering The Assembly (Large #).

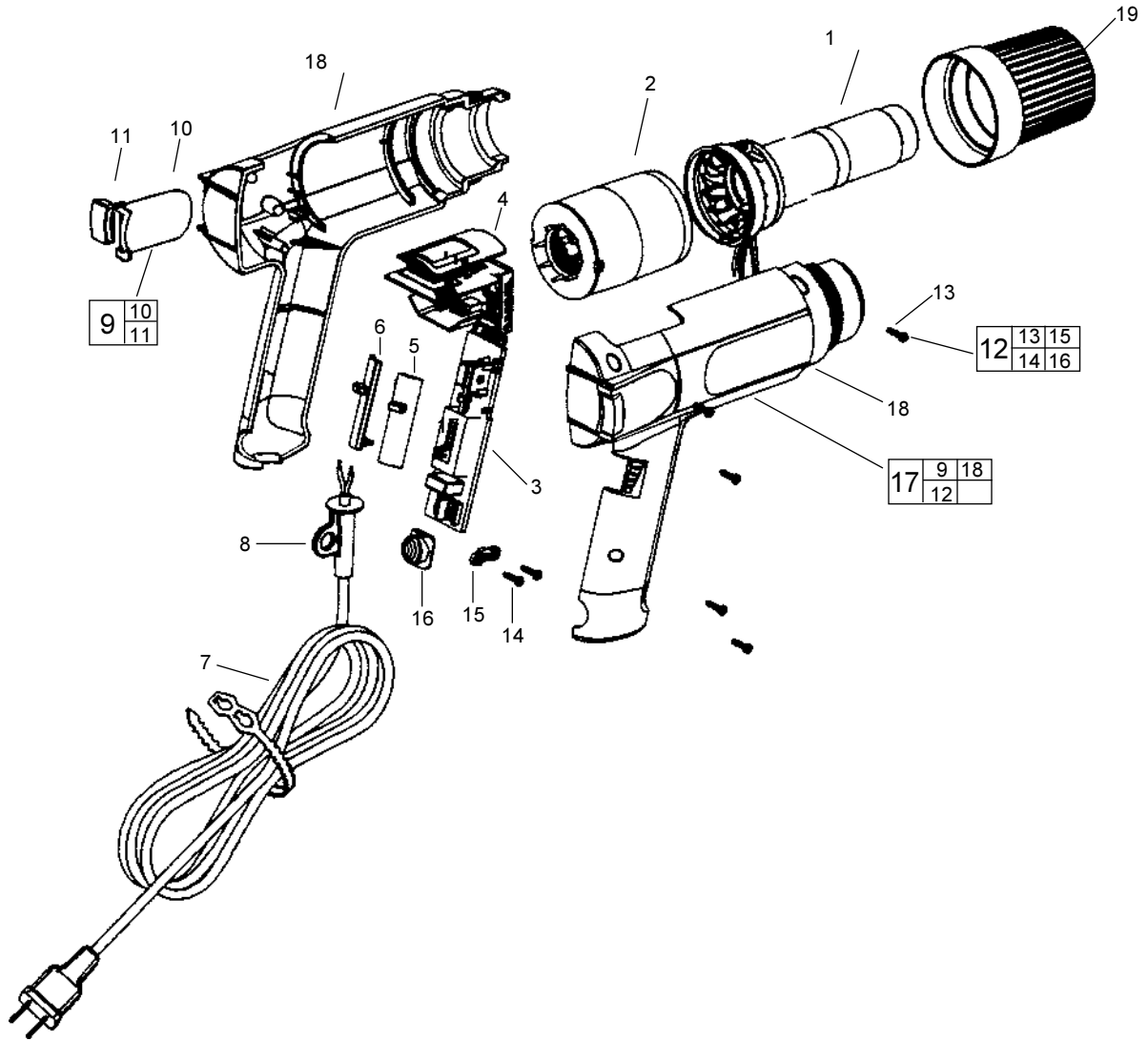
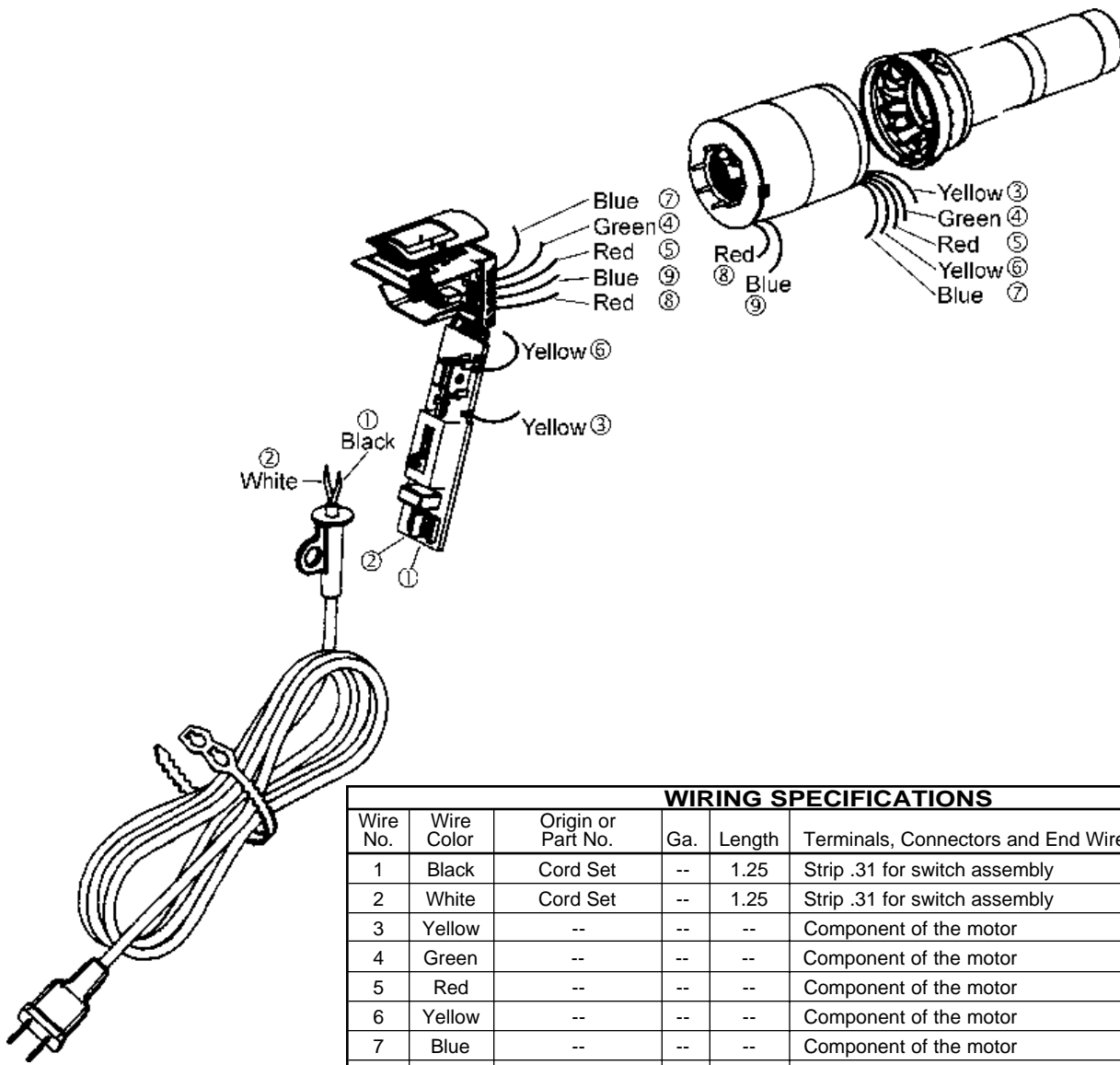
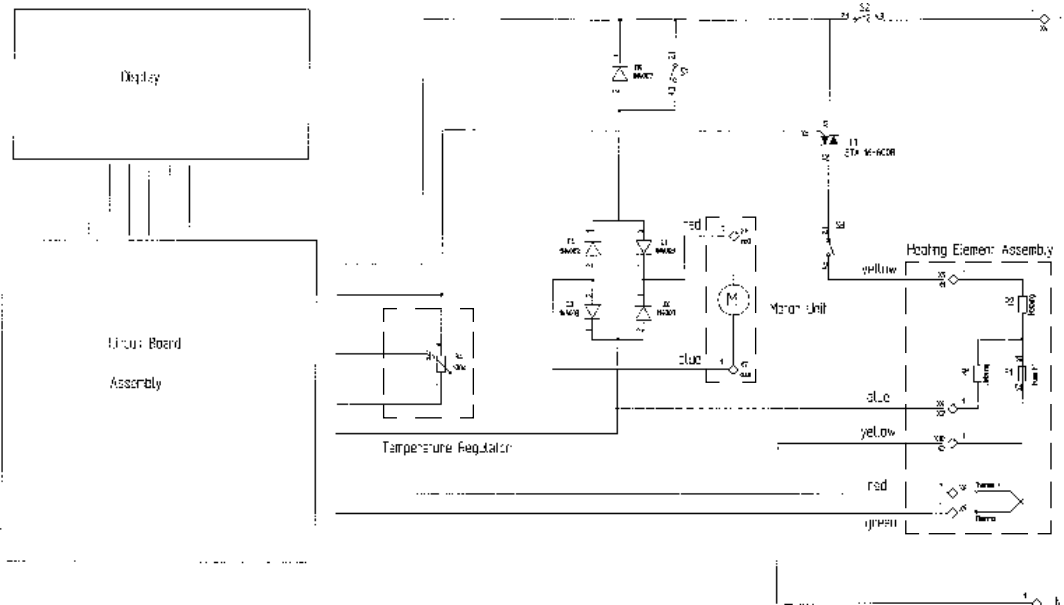


FIG.	PART NO.	DESCRIPTION OF PART	QTY.	FIG.	PART NO.	DESCRIPTION OF PART	QTY.
1	14-20-0465	Heating Element	(1)	12	14-46-8986	Repair Kit	(1)
2	14-50-0635	Motor	(1)	13	-----	Housing Screws	(5)
3	23-66-2055	Switch Assembly	(1)	14	-----	Cord Screws	(2)
4	31-15-0025	LCD Display Cover	(1)	15	-----	Cord Clamp	(1)
5	31-84-0010	Switch Cap - Temperature (Red)	(1)	16	-----	Rubber Support	(1)
6	31-84-0015	Switch Cap - Power (Blue)	(1)	17	14-38-0575	Housing Kit	(1)
7	22-64-0830	Cord	(1)	18	-----	Housing Halves	(2)
8	44-76-0165	Strain Relief	(1)	19	31-55-0165	Nose Guard	(1)
9	14-46-8988	Air Filter Kit	(1)	--	12-20-8988	Service Nameplate Kit (not shown)	(1)
10	-----	Air Filter	(2)	--	-----	Milwaukee Label (not shown)	(1)
11	-----	Rubber Pad	(2)	--	-----	Caution Label (not shown)	(1)
				--	-----	Nameplate (not shown)	(1)



WIRING SPECIFICATIONS					
Wire No.	Wire Color	Origin or Part No.	Ga.	Length	Terminals, Connectors and End Wire Preparation
1	Black	Cord Set	--	1.25	Strip .31 for switch assembly
2	White	Cord Set	--	1.25	Strip .31 for switch assembly
3	Yellow	--	--	--	Component of the motor
4	Green	--	--	--	Component of the motor
5	Red	--	--	--	Component of the motor
6	Yellow	--	--	--	Component of the motor
7	Blue	--	--	--	Component of the motor
8	Red	--	--	--	Component of the motor
9	Blue	--	--	--	Component of the motor

**BULK LEAD WIRE - BULLETIN 58-01-0003**







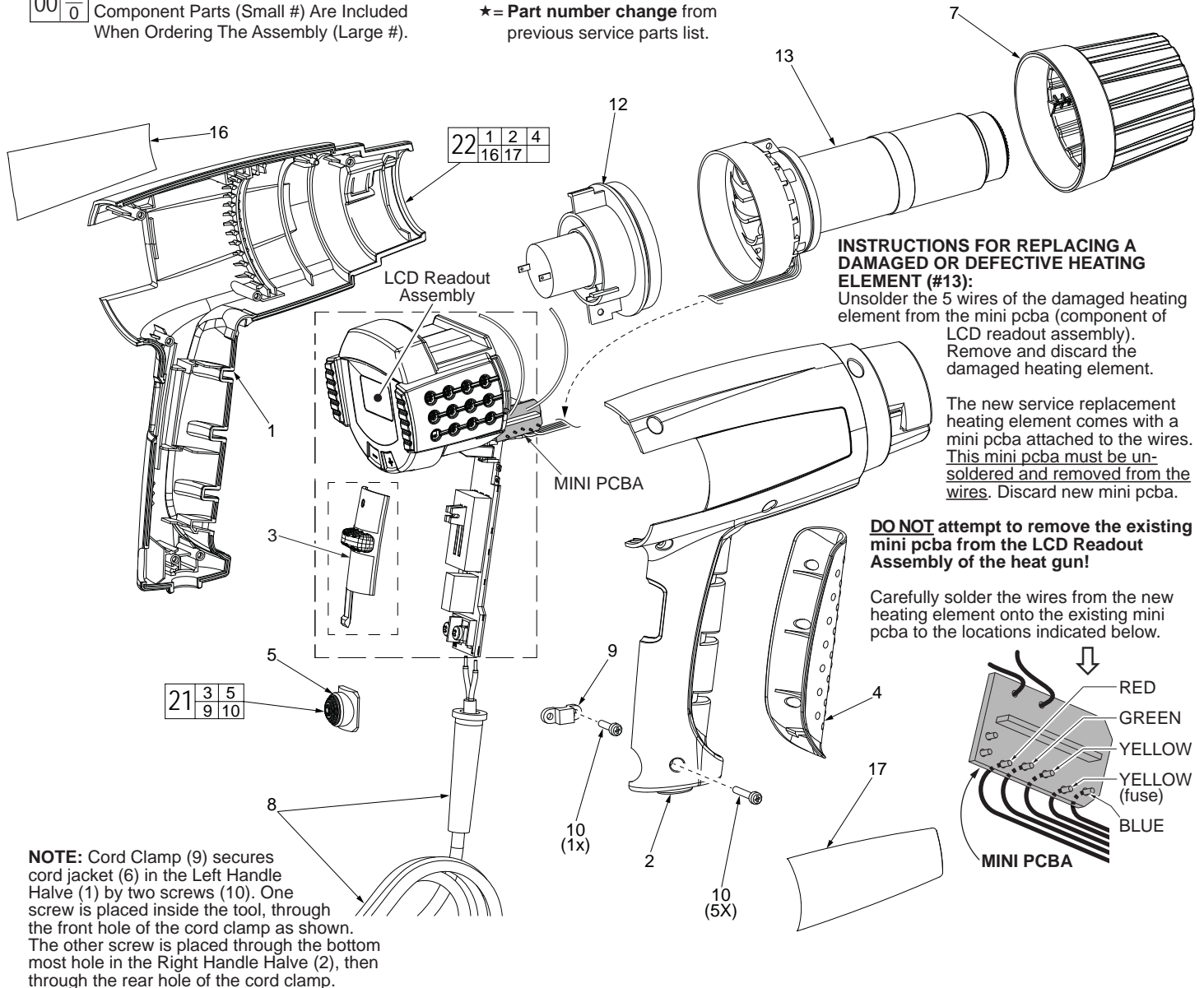
# SERVICE PARTS LIST

**BULLETIN NO.**  
54-05-0826  
**DATE**  
Feb. 2014

SPECIFY CATALOG NO. AND SERIAL NO. WHEN ORDERING PARTS			REVISED BULLETIN	DATE
<b>D.I. VARIABLE TEMP. HEAT GUN with Display</b>			54-05-0825	Feb. 2014
<b>CATALOG NO.</b>	<b>8988-20</b>	<b>SERIAL NUMBER</b>	<b>WIRING INSTRUCTION</b>	
		<b>199B</b>	<b>See Reverse Side</b>	

**EXAMPLE:**  
Component Parts (Small #) Are Included  
When Ordering The Assembly (Large #).

★ = Part number change from  
previous service parts list.



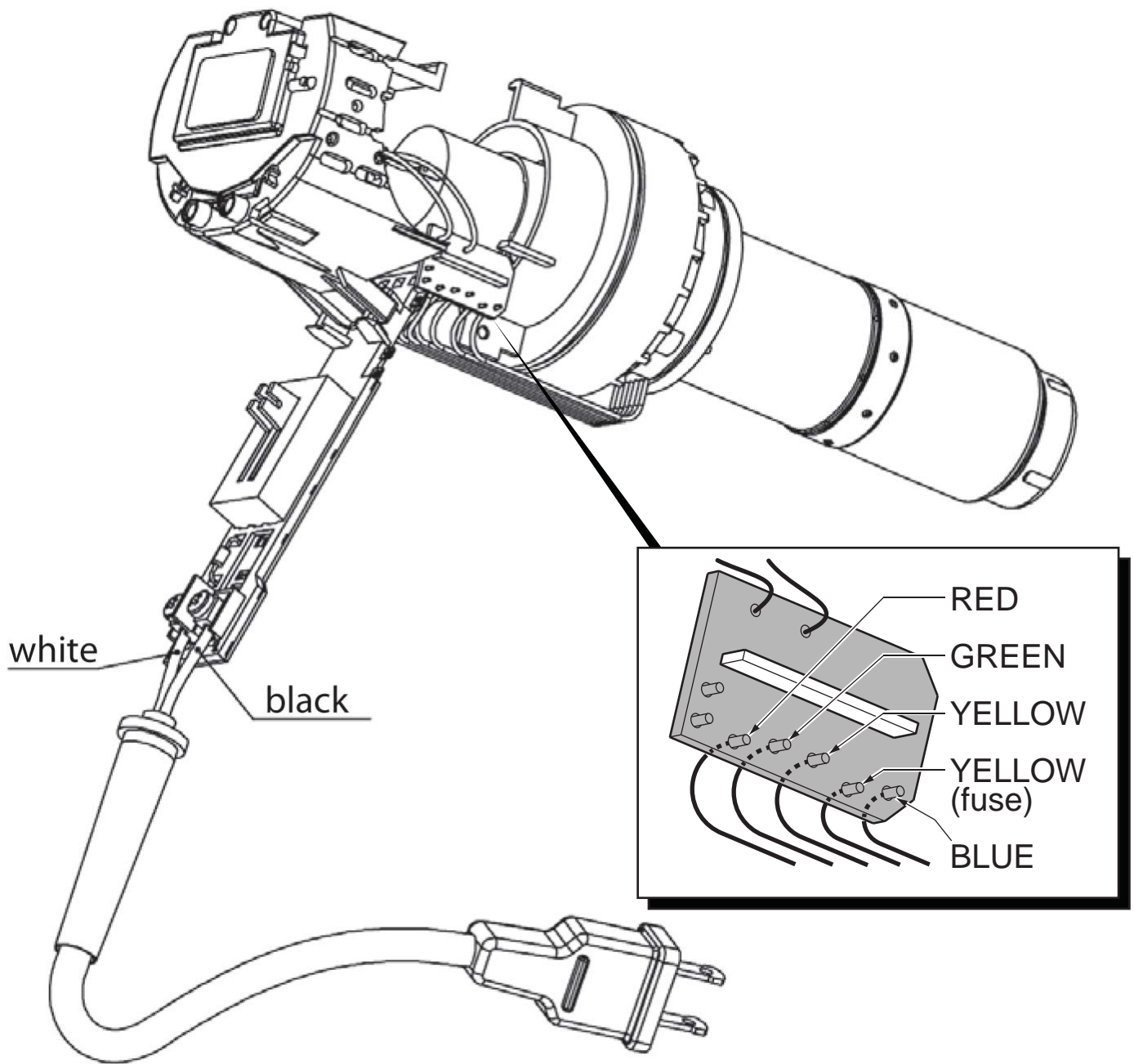
**INSTRUCTIONS FOR REPLACING A DAMAGED OR DEFECTIVE HEATING ELEMENT (#13):**  
Unsolder the 5 wires of the damaged heating element from the mini pcba (component of LCD readout assembly). Remove and discard the damaged heating element.  
  
The new service replacement heating element comes with a mini pcba attached to the wires. This mini pcba must be un-soldered and removed from the wires. Discard new mini pcba.

**DO NOT attempt to remove the existing mini pcba from the LCD Readout Assembly of the heat gun!**  
  
Carefully solder the wires from the new heating element onto the existing mini pcba to the locations indicated below.

**NOTE:** Cord Clamp (9) secures cord jacket (6) in the Left Handle Halve (1) by two screws (10). One screw is placed inside the tool, through the front hole of the cord clamp as shown. The other screw is placed through the bottom most hole in the Right Handle Halve (2), then through the rear hole of the cord clamp.

FIG.	PART NO.	DESCRIPTION OF PART	NO. REQ.
1	-----	Left Handle Halve	1
2	-----	Right Handle halve	1
3	-----	◆ Switch Cover with external markings	1
4	31-44-0013	Soft Grip	1
5	-----	◆ Rubber Tool Rest	1
7	31-55-0031	Nose Cone	1
8	22-64-0037	Cord Set with Cord Protector	1
9	-----	◆ Cord Clamp	1
10	-----	◆ Pan Head Phillips Screw (Chrome)	6
12	14-50-0051	Motor/Fan Assembly	1
13	14-20-0042	Heating Element	1
16	-----	Logo Label	1
17	12-20-8987	Service Nameplate	1
18	-----	Warning Label (Not Shown)	1
21	14-46-0021	Repair Service Kit	1
22	14-38-0022	Handle Service Kit	1

21 ◆ 14-46-0021 Repair Service Kit				
Consists of:				
Fig.	Description of Part	Where Used	Color	Qty.
3	Switch Cover w/markings	Internal Switch	Black	1
5	Rubber Tool Rest	Handle Halves	Black	1
9	Cord Clamp	Cord Jacket	White	1
10	Pan Head Phillips Screw	Cord Clamp	Chrome	1
10	Pan Head Phillips Screw	Right Handle	Chrome	5



### INSTRUCTIONS FOR REPLACING A DAMAGED OR DEFECTIVE HEATING ELEMENT (#13):

- Unsolder the 5 wires of the damaged heating element from the mini pcba (component of LCD readout assembly). Remove and discard the damaged heating element.
- The new service replacement heating element comes with a mini pcba attached to the wires. This mini pcba must be unsoldered and removed from the wires. Discard new mini pcba.
- **DO NOT attempt to remove the existing mini pcba from the LCD Readout Assembly of the heat gun!**
- Carefully solder the wires from the new heating element onto the existing mini pcba to the locations indicated in the detail.



# SERVICE PARTS LIST

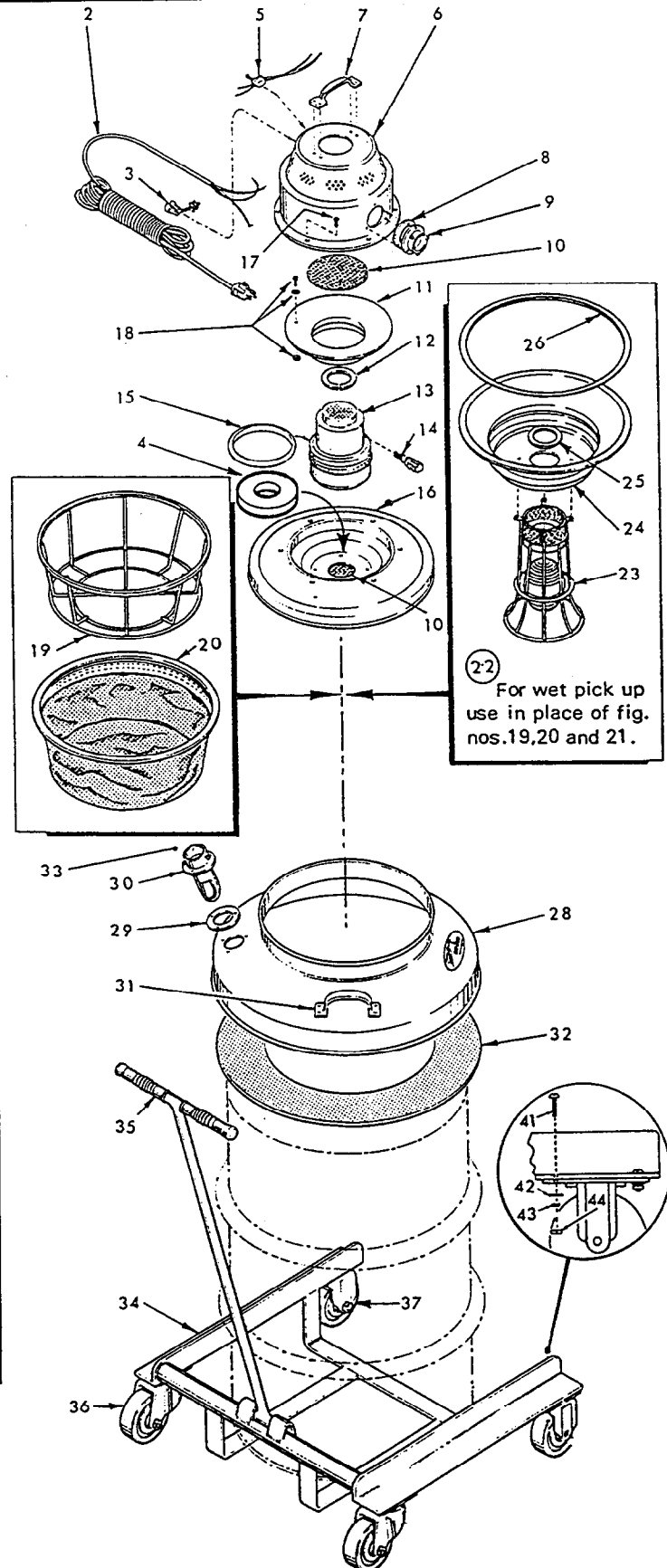
BULLETIN NO.  
55-05-0500

SPECIFY CATALOG NO. AND SERIAL NO. WHEN ORDERING PARTS		REVISED BULLETIN	DATE
<b>VACUUM CLEANER MOTOR HEAD</b>			Feb. '95
CATALOG NO. 8945-2	STARTING SERIAL NO. SERIES 1	WIRING INSTRUCTION	

EXAMPLE:  
Component Parts (Small #)  
Are Included When Ordering  
The Assembly (Large #).

00-0

FIG.	PART NO.	DESCRIPTION OF PART	NO. REQ.
1	—	Cat. No. 8945 Motor Head (Includes Fig. Nos. 2 thru 18)	(1)
2	22-64-3220	Cord Set	(1)
3	44-76-0230	Cord Protector	(1)
4	43-44-0500	Bottom Motor Gasket	(1)
5	23-66-0870	Switch	(1)
6	42-92-0350	Motor Cover Assembly (Includes Fig. Nos. 7 thru 10)	(1)
7	43-62-0510	Handle	(1)
8	43-44-0370	Gasket	(1)
9	42-86-0070	Connector	(1)
10	45-03-0120	Perforated Aluminum Screen	(1)
11	42-04-0450	Motor Adapter	(1)
12	43-44-0470	Motor Top Gasket	(1)
13	23-30-0260	Large Bypass Motor Assembly	(1)
14	22-18-0435	Carbon Brush and Holder (Set)	(1)
15	43-44-0475	Top Motor Gasket	(1)
16	42-92-0270	Container Cover with Screen	(1)
17	06-85-2000	12 x 1/2 Phillips Type B Pan Hd. Screw	(6)
18	06-05-0010	Ground Screw Assembly	(1)
19	49-90-0270	Wire Frame	(1)
20	49-90-0260	Cloth Filter and Gasket	(1)
21	49-90-0320	Dacron Filter Bag (Not Shown)	(1)
22	49-90-1610	Wet Pick-Up Conversion Pan Assembly (Includes Fig. Nos. 23 thru 26)	(1)
23	42-46-0110	Float Cage Assembly	(1)
24	44-54-0050	Wet Pan Adapter	(1)
25	43-44-0340	Shut Off Gasket	(1)
26	43-44-0330	Gasket	(1)
27	49-90-1590	16" Drum Adapter Assembly (Includes Fig. Nos. 28 thru 33)	(1)
28	42-04-0430	Drum Adapter	(1)
29	43-44-0370	Inlet Gasket	(1)
30	42-86-0080	Inlet Connector Assembly	(1)
31	43-62-0500	Handle	(2)
32	43-44-0350	Gasket	(1)
33	43-33-0490	Elbow (Not Shown)	(1)
34	49-90-1100	Four Wheel Drum Dolly (Includes Fig. Nos. 35 thru 44)	(1)
35	43-62-0510	Handle Grip	(2)
36	45-94-0300	5" Swivel Caster	(2)
37	45-94-0305	5" Rigid Caster	(2)
41	06-81-1810	1/4-20 Screw	(16)
42	45-88-8170	Flat Washer	(16)
43	06-97-4050	1/4 Split Lockwasher	(16)
44	06-55-1525	1/4-20 Hex Nut	(16)



22 For wet pick up use in place of fig. nos. 19, 20 and 21.



# SERVICE PARTS LIST

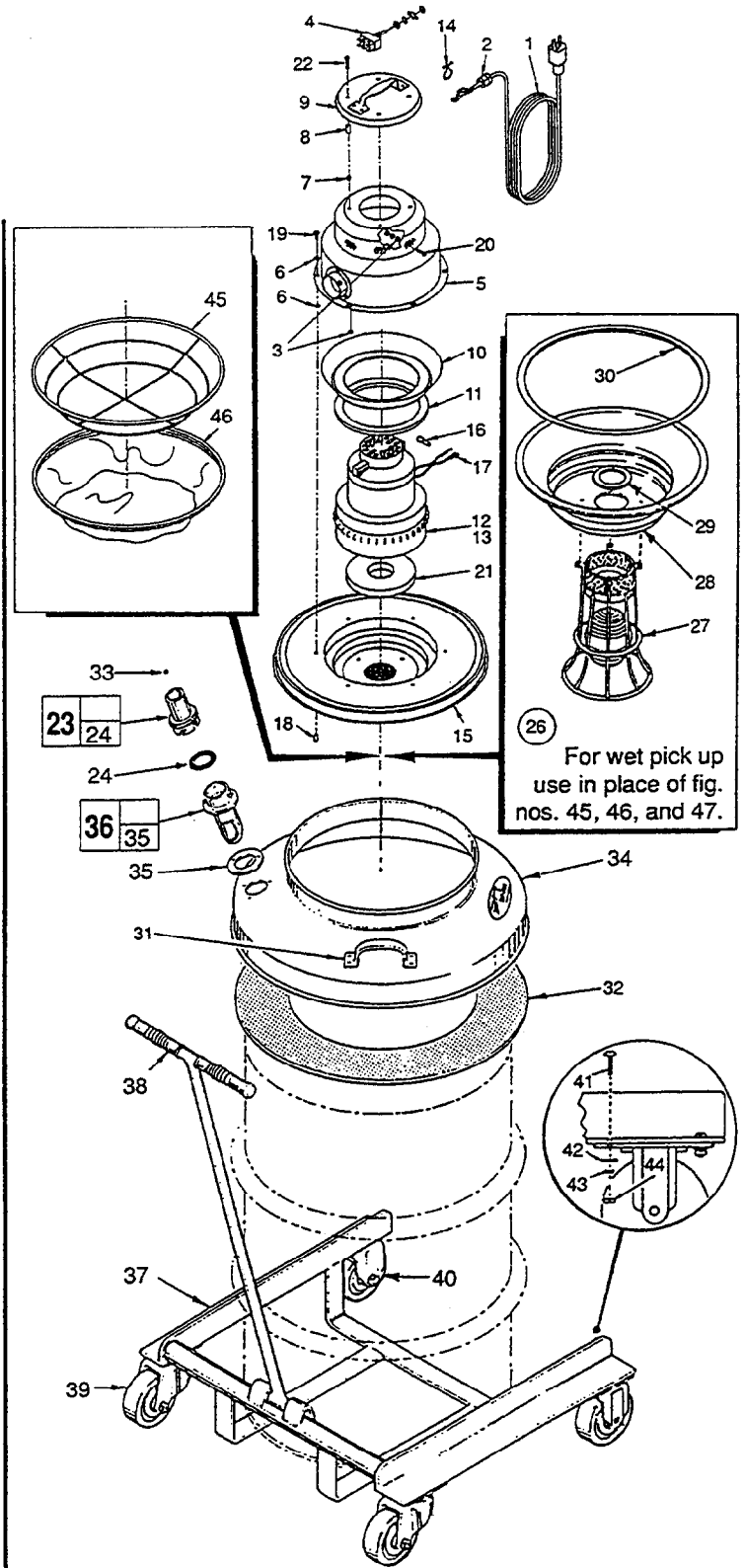
BULLETIN NO.  
55-05-0501

SPECIFY CATALOG NO. AND SERIAL NO. WHEN ORDERING PARTS		REVISED BULLETIN 55-05-0500	DATE Aug. '95
<b>VACUUM CLEANER MOTOR HEAD</b>			
CATALOG NO.	8945-2	STARTING SERIAL NO.	642A
		<b>SEE REVERSE SIDE</b>	

EXAMPLE:  
 Component Parts (Small #)  
 Are Included When Ordering  
 The Assembly (Large #).

Cat. No. 8945-2 Motor Head  
 (Includes Fig. Nos. 1-24)

FIG.	PART NO.	DESCRIPTION OF PART	NO. REQ.
1	22-64-3220	Cord Set	(1)
2	44-76-0230	Strain Relief	(1)
★ 3	06-55-3800	10-24 Hex Nut	(7)
4	23-66-0870	Switch	(1)
★ 5	42-92-1055	Dome Assembly	(1)
★ 6	45-88-8680	#12 Internal Tooth Lockwasher	(2)
★ 7	45-88-8695	.37 Dia. x .18 Nylon Spacer	(4)
★ 8	45-88-8700	.37 Dia. x .56 Nylon Spacer	(4)
★ 9	44-66-6175	Dome Cap With Handle	(1)
★ 10	42-04-3595	Baffle	(1)
★ 11	43-44-1025	Top Motor Gasket	(1)
★ 12	23-30-0310	240 V 3 Stage Motor	(1)
★ 13	22-18-0900	240 V Carbon Brush and Holder (Set)	(1)
★ 14	22-38-0170	Wire Tie	(1)
★ 15	42-92-1060	Cover Assembly	(1)
★ 16	23-71-0010	Wire Nut	(4)
★ 17	23-74-1280	Terminal	(1)
★ 18	44-76-0275	Screw Tip Protector	(6)
★ 19	06-81-1815	12 x 1/2 Phillips Type B Pan Hd. Screw	(6)
★ 20	06-81-1812	10-24 x 3/4" Phlp. Screw	(1)
★ 21	43-44-1030	Bottom Motor Gasket	(1)
★ 22	06-81-1825	10-24 x 1" Round Hd. Phlp. Screw	(4)
★ 23	49-90-0150	Swivel Hose Connector	(1)
★ 24	43-44-0275	Gasket	(1)
★	12-20-8900	Service Nameplate Kit	(1)
★	10-20-8900	Warning Label	(1)
★	10-05-5050	Conversion Label	(1)
26	49-90-1610	Wet Pick-Up Conversion Pan Assembly (Includes Fig. Nos. 27 thru 30)	
27	42-46-0110	Float Cage Assembly	(1)
28	44-54-0050	Wet Pan Adapter	(1)
29	43-44-0340	Shut Off Gasket	(1)
30	43-44-0330	Gasket	(1)
	49-90-1590	16" Drum Adapter Assembly (Includes Fig. Nos. 31 thru 36)	
31	43-62-0500	Handle	(2)
32	43-44-0350	Gasket	(1)
33	43-33-0490	Elbow (Not Shown)	(1)
34	42-04-0430	Drum Adapter	(1)
35	43-44-0370	Inlet Gasket	(1)
36	42-86-0080	Inlet Connector Assembly	(1)
37	49-90-1100	Four Wheel Drum Dolly (Includes Fig. Nos. 38 thru 44)	
38	43-62-0510	Handle Grip	(2)
39	45-94-0300	5" Swivel Caster	(2)
40	45-94-0305	5" Rigid Caster	(2)
41	06-81-1810	1/4-20 Screw	(16)
42	45-88-1870	Flat Washer	(16)
43	06-97-4050	1/4 Split Lockwasher	(16)
44	06-55-1525	1/4-20 Hex Nut	(16)
★ 45	49-90-0275	Wire Frame	(1)
★ 46	49-90-0265	Cloth Filter and Gasket	(1)
47	49-90-0320	Dacron Filter Bag (Not Shown)	(1)



# WIRING SCHEMATIC

8911, 8912, 8912-2, 8925, 8925-2  
8926, 8935, 8945, 8945-2

