

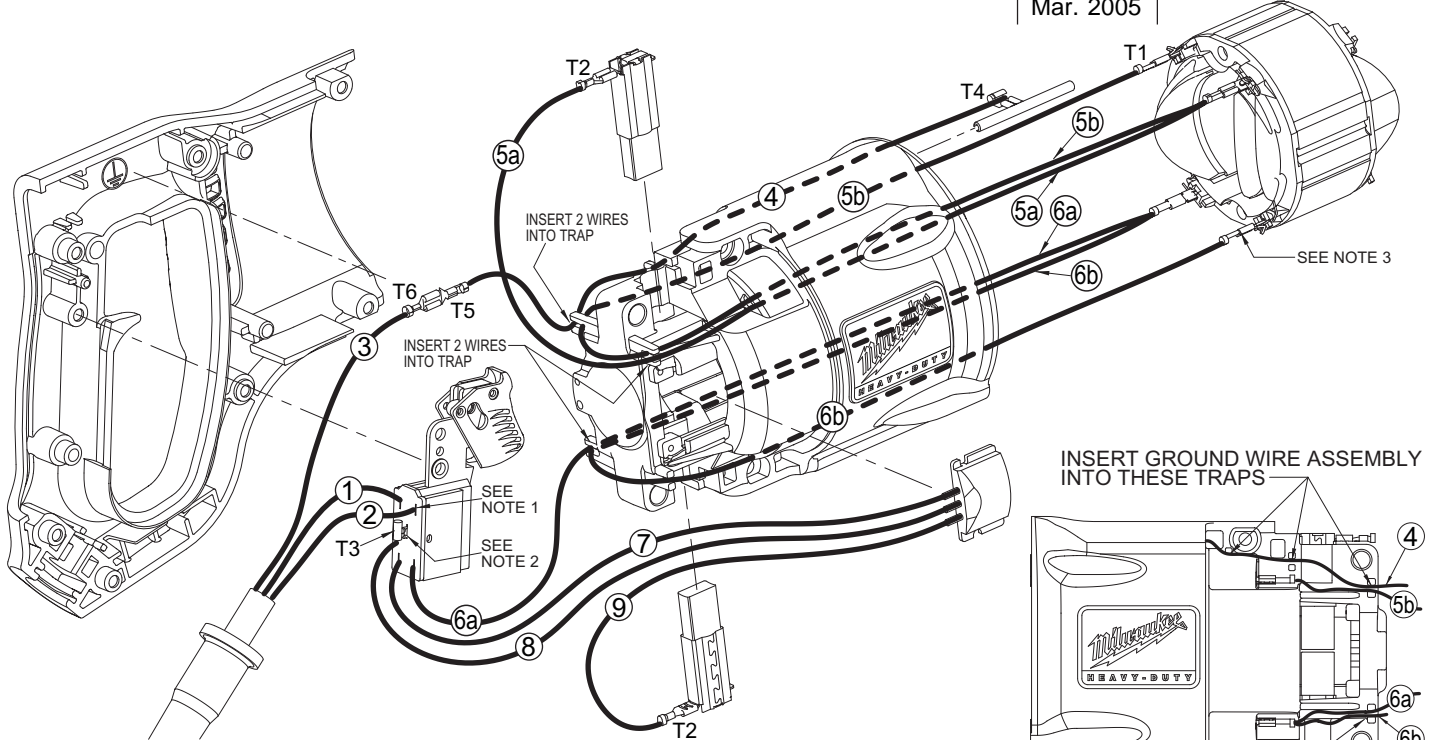
WIRING INSTRUCTIONS

TITLE

SAWZALL®

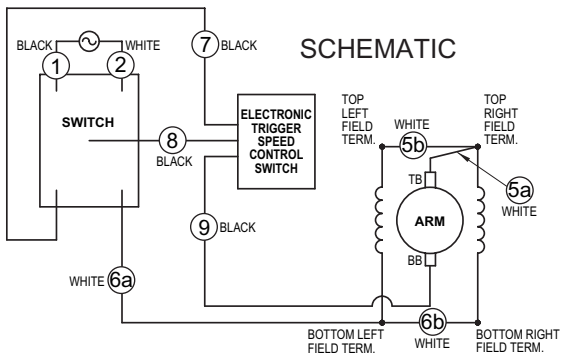
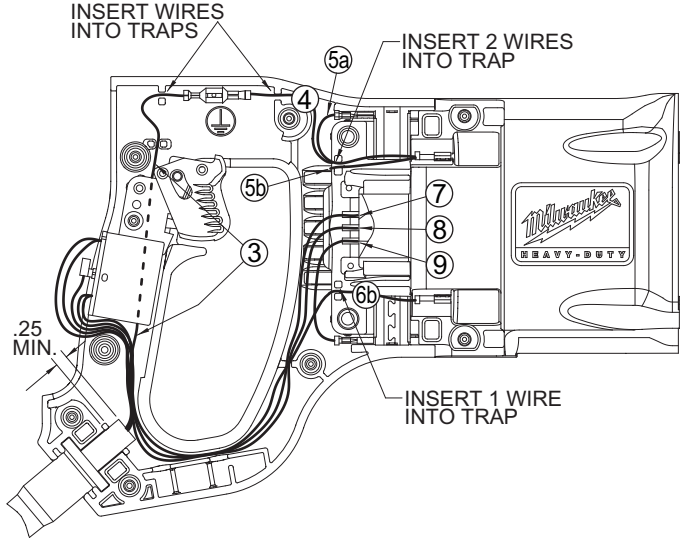
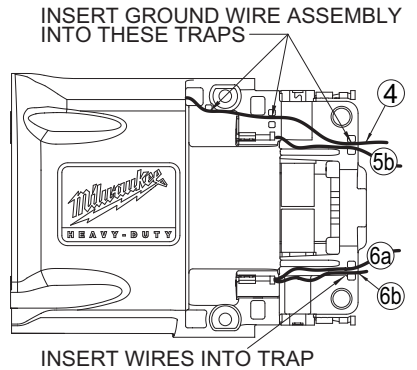
**BULLETIN
58-01-0055**

DATE
Mar. 2005



NOTES:

1. END OF WIRE INSULATION MUST BE BELOW OPENING IN DUST SHIELD ON SWITCH. (4 PLACES).
2. BENDING OF TERMINAL (T2) IS ACCEPTABLE. IF BENT DURING ASSEMBLY, DO NOT STRAIGHTEN.
3. TERMINALS MAY BE SECURED WITH BARRELS FACING IN OR OUT. (4 PLACES).



WIRING SPECIFICATIONS

Wire No.	Wire Color	Origin or Part No.	Ga.	Length	Terminals, Connectors and End Wire Preparation
1	Black	Cord Assembly	16	3.75	Strip .375 and tin.
2	White	Cord Assembly	16	3.75	Strip .375 and tin.
3	Green	Cord Assembly	16	6.00	Strip .19 for T6.
4	Green	23-94-0025	18	7.00	Strip each end .190 for T4 and T5.
5a	White	23-94-6750	18	2.90	Strip one end .19 for T2.
5b	White	23-94-6750	18	5.00	Strip one end .15 for T1.
6a	White	23-94-6755	18	9.25	Strip one .320 and tin.
6b	White	23-94-6755	18	5.00	Strip one end .15 for T1.
7	Black	14-20-3150	18	10.00	Strip .320 and tin.
8	Black	14-20-3150	18	10.00	Strip .19 for T3.
9	Black	14-20-3150	18	2.40	Strip .19 for T2.

NOTE:

All leads must be held to ± 1/8".
All lead lengths are before stripping.

TERMINAL DESCRIPTION

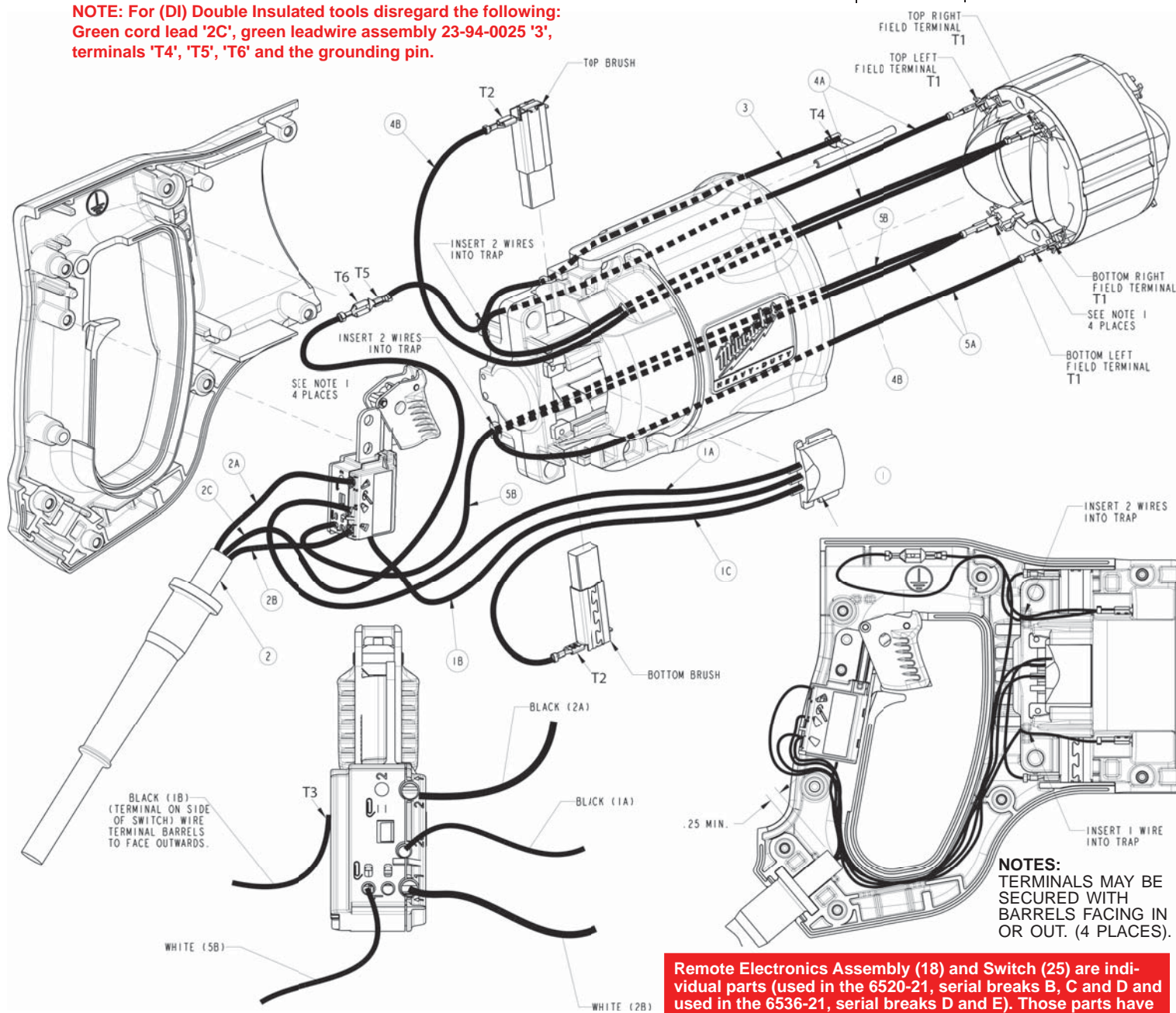
Code	Part No.	Qty.
T1	23-74-1060	4
T2	23-74-0017	2
T3	23-74-0900	1
T4	23-74-0605	1
T5	23-74-0105	1
T6	23-74-1095	1

BULK LEAD WIRE - BULLETIN 58-01-0003

WIRING INSTRUCTIONS

TITLE <div style="background-color: black; height: 15px; width: 100%;"></div>	SAWZALL®	BULLETIN 58-01-0056
		DATE Dec. 2011

NOTE: For (DI) Double Insulated tools disregard the following: Green cord lead '2C', green leadwire assembly 23-94-0025 '3', terminals 'T4', 'T5', 'T6' and the grounding pin.



NOTES:
 TERMINALS MAY BE SECURED WITH BARRELS FACING IN OR OUT. (4 PLACES).

Remote Electronics Assembly (18) and Switch (25) are individual parts (used in the 6520-21, serial breaks B, C and D and used in the 6536-21, serial breaks D and E). Those parts have been replaced by a Switch Assembly, 23-66-4245. See the next page to wire the new Switch Assembly into an existing tool.

WIRING SPECIFICATIONS

Wire No.	Wire Color	Origin or Part No.	Ga.	Length	Terminals, Connectors and End Wire Preparation
1A	Black	14-20-3151	18	10.25	Strip .320 and tin.
1B	Black or Yellow	14-20-3151	18	9.5	Strip .19 for T3.
1C	Black or Blue	14-20-3151	18	2.40	Strip .19 for T2.
2A	Black	Cord Assembly	16	4.00	Strip .340 and tin.
2B	White	Cord Assembly	16	3.25	Strip .340 and tin.
2C	Green	Cord Assembly	16	11.25	Strip .19 for T6.
3	Green	23-94-0025	18	7.00	Strip each end .190 for T4 and T5.
4A	White	23-94-6750	18	2.90	Strip one end .19 for T2.
4B	White	23-94-6750	18	5.00	Strip one end .15 for T1.
5A	White	23-94-6755	18	9.25	Strip one .320 and tin.
5B	White	23-94-6755	18	5.00	Strip one end .15 for T1.

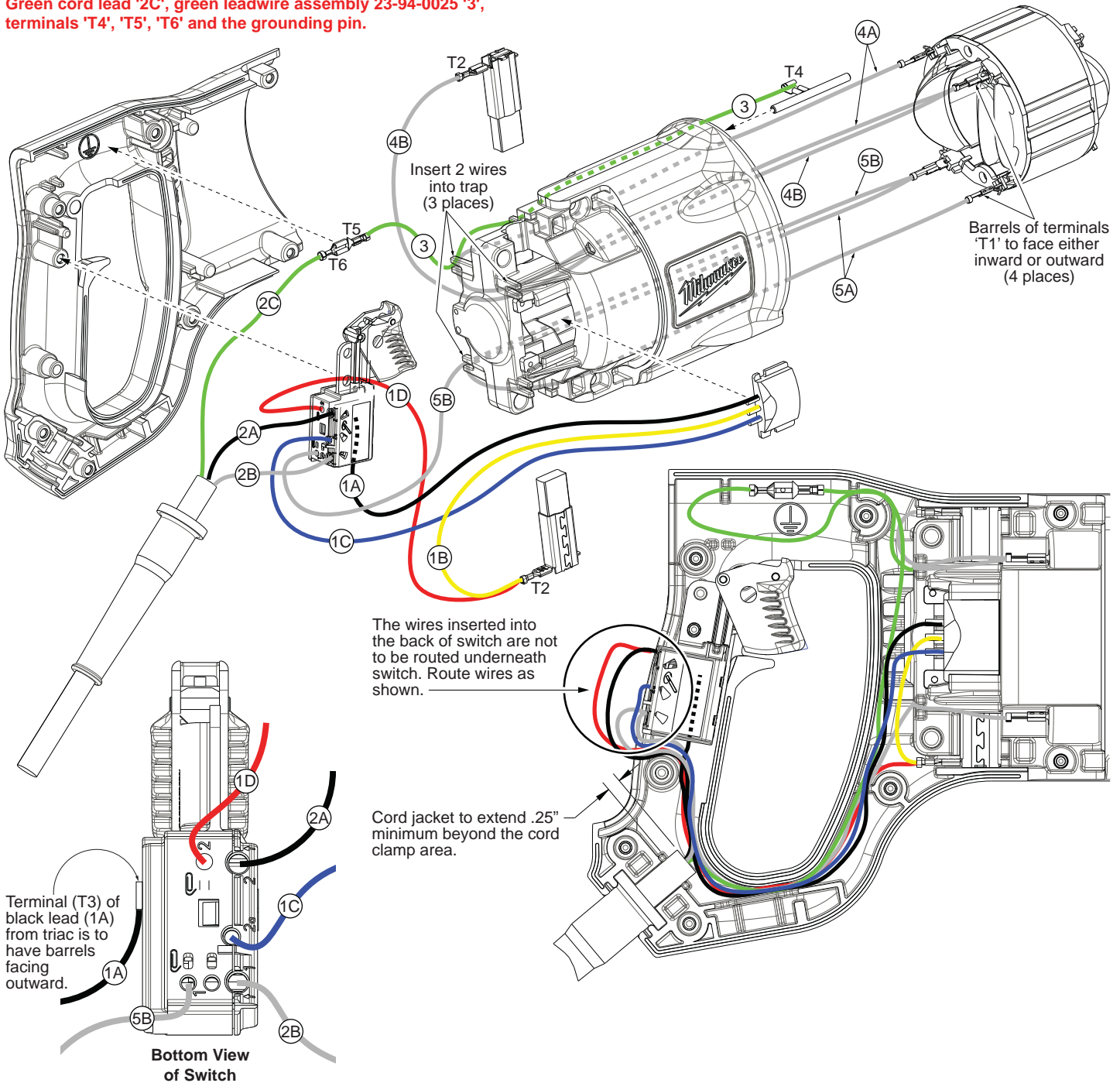
BULK LEAD WIRE - BULLETIN 58-01-0003

NOTE:
 All leads must be held to ± 1/8".
 All lead lengths are before stripping.

TERMINAL DESCRIPTION

Code	Part No.	Qty.
T1	23-74-1060	4
T2	23-74-0017	2
T3	23-74-0010	1
T4	23-74-0605	1
T5	23-74-0105	1
T6	23-74-1095	1

**NOTE: For (DI) Double Insulated tools disregard the following:
Green cord lead '2C', green leadwire assembly 23-94-0025 '3',
terminals 'T4', 'T5', 'T6' and the grounding pin.**



WIRING SPECIFICATIONS

Wire No.	Wire Color	Origin or Part No.	Ga.	Length	Terminals, Connectors and End Wire Preparation
1A	Black	TRIAC	---	---	Component of Switch Assembly 23-66-4245.
1B	Yellow	TRIAC	---	---	Component of Switch Assembly 23-66-4245.
1C	Blue	TRIAC	---	---	Component of Switch Assembly 23-66-4245.
1D	Red	TRIAC	---	---	Component of Switch Assembly 23-66-4245.
2A	Black	Cord Assembly	16	4.00	Strip .340 and tin.
2B	White	Cord Assembly	16	3.25	Strip .340 and tin.
2C	Green	Cord Assembly	16	11.25	Strip .19 for T6.
3	Green	23-94-0025	18	7.00	Strip each end .190 for T4 and T5.
4A	White	23-94-6750	18	2.90	Strip one end .19 for T2.
4B	White	23-94-6750	18	5.00	Strip one end .15 for T1.
5A	White	23-94-6755	18	9.25	Strip one .320 and tin.
5B	White	23-94-6755	18	5.00	Strip one end .15 for T1.

BULK LEAD WIRE - BULLETIN 58-01-0003

NOTE:

All leads must be held to ± 1/8".
All lead lengths are before stripping.

TERMINAL DESCRIPTION

Code	Part No.	Qty.
T1	23-74-1060	4
T2	23-74-0017	2
T3	23-74-0010	1
T4	23-74-0605	1
T5	23-74-0105	1
T6	23-74-1095	1