



# SERVICE PARTS LIST

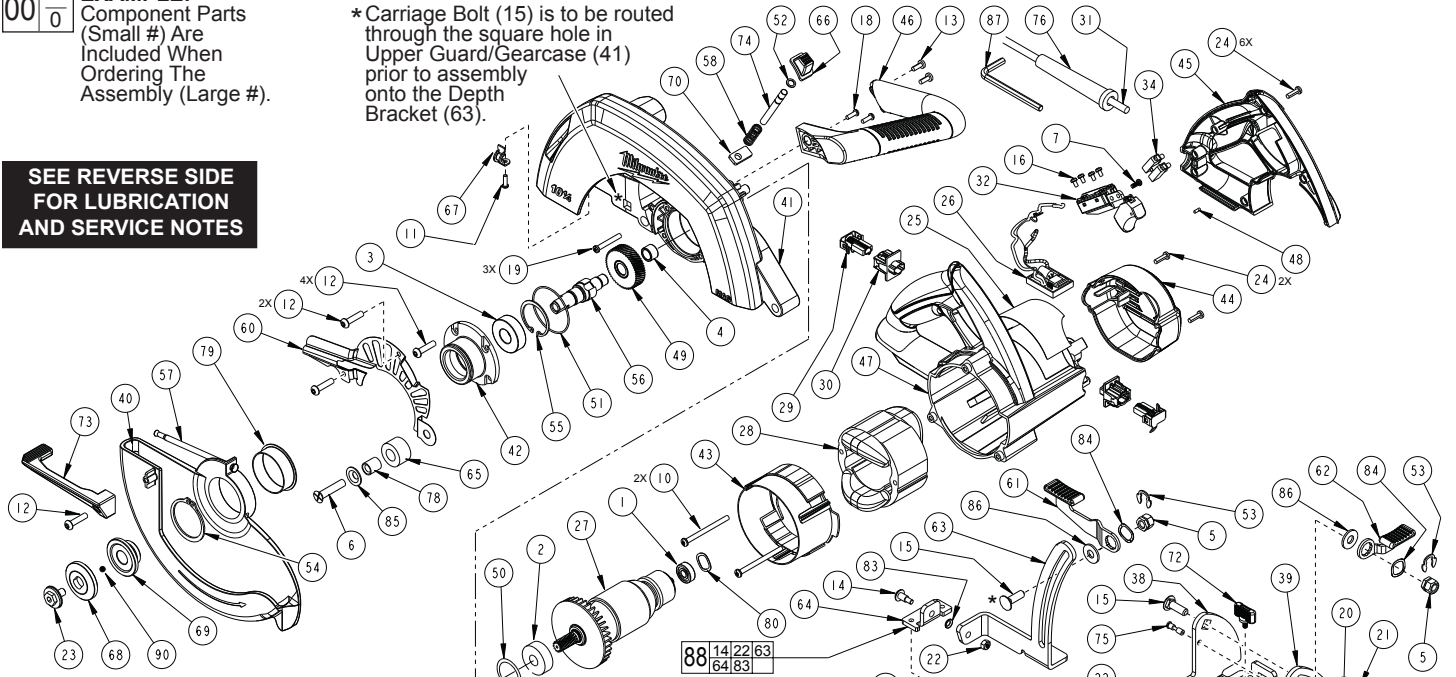
**BULLETIN NO.  
54-40-1940**

|  |                                 |                  |
|--|---------------------------------|------------------|
| SPECIFY CATALOG NO. AND SERIAL NO. WHEN ORDERING PARTS |                                 | REVISED BULLETIN |
| <b>10-1/4" CIRCULAR SAW</b>                            |                                 |                  |
| <b>CATALOG NO. 6470-21</b>                             | <b>STARTING SERIAL NO. B49A</b> |                  |

**EXAMPLE:**  
Component Parts (Small #) Are Included When Ordering The Assembly (Large #).

\* Carriage Bolt (15) is to be routed through the square hole in Upper Guard/Gearcase (41) prior to assembly onto the Depth Bracket (63).

**SEE REVERSE SIDE FOR LUBRICATION AND SERVICE NOTES**



| FIG. | PART NO.   | DESCRIPTION OF PART                         | QTY. REQ. |
|------|------------|---|-----------|
| 1    | 02-04-0847 | Ball Bearing                                | (1)       |
| 2    | 02-04-1291 | Ball Bearing                                | (1)       |
| 3    | 02-04-1747 | Ball Bearing                                | (1)       |
| 4    | 02-50-0110 | Needle Bearing                              | (1)       |
| 5    | 05-55-2030 | 8mm Bevel Hex Nut                           | (2)       |
| 6    | 05-70-0335 | M8 x 40mm Flat Hd. T-30 Screw               | (1)       |
| 7    | 05-71-0017 | M4 x 10mm T-15 Screw                        | (1)       |
| 8    | 05-74-0950 | M3 x 5mm Flat Hd. T-20 Screw                | (1)       |
| 9    | 05-74-1005 | M6 x 10mm Flat Hd. T-25 Screw               | (9)       |
| 10   | 05-74-0980 | M5 x 65mm T-25 Field Screw                  | (2)       |
| 11   | 05-74-0985 | M4 x 12mm Pan Hd. Tapt. T-20 Screw          | (1)       |
| 12   | 05-74-0990 | M5 x 15mm Pan Hd. T-25 Screw                | (7)       |
| 13   | 05-74-0995 | 8-16 x .5 Pan Hd. T-20 Screw                | (2)       |
| 14   | 05-74-1000 | M5 x 10mm T-25 Screw                        | (2)       |
| 15   | 05-77-1360 | M8 x 23mm Carriage Bolt                     | (2)       |
| 16   | 05-78-0305 | M3.5 x 7mm T-15 Switch Screw                | (4)       |
| 17   | 05-84-0980 | M5 x 10mm Set Screw                         | (1)       |
| 18   | 05-86-0200 | M5 x 11mm T-20 Screw                        | (1)       |
| 19   | 05-88-5988 | M5 x 35mm Pan Hd. Slit. T-20 Screw          | (3)       |
| 20   | 05-90-0160 | External Tooth Lock Washer                  | (1)       |
| 21   | 06-57-0050 | M6 Hex Nut                                  | (1)       |
| 22   | 05-55-0620 | M5 x 8mm Hex Nut                            | (2)       |
| 23   | 06-75-0038 | 5/16"-18 x 9/16" Blade Screw                | (1)       |
| 24   | 06-82-7270 | 8-16 x 5/8" Pan Hd. Slit. Plast. T-20 Screw | (8)       |
| 25   | 12-20-6470 | Service Nameplate Kit                       | (1)       |
| 26   | 14-20-0880 | PCB Assembly                                | (1)       |
| 27   | 16-70-0550 | Service Armature                            | (1)       |
| 28   | 18-70-0550 | Service Field                               | (1)       |
| 29   | 22-18-0035 | Brush Assembly                              | (2)       |
| 30   | 22-22-0030 | Brush Tube Assembly                         | (2)       |
| 31   | 22-64-6515 | Cord Set                                    | (1)       |
| 32   | 23-66-1813 | Switch                                      | (1)       |
| 34   | 23-74-0140 | Terminal Block                              | (1)       |
| 38   | -----      | Bevel Bracket                               | (1)       |
| 39   | -----      | Bevel Plate                                 | (1)       |
| 40   | 28-41-0662 | Lower Guard                                 | (1)       |
| 41   | 28-41-0673 | Upper Guard/Gearcase                        | (1)       |
| 42   | 28-53-0165 | Spindle Hub                                 | (1)       |
| 43   | 31-05-0017 | Fan Baffle                                  | (1)       |
| 44   | 31-15-0463 | Motor Housing Cover                         | (1)       |
| 45   | 31-44-0485 | Handle Halve - Left                         | (1)       |
| 46   | 31-44-0488 | Bale Handle Assembly                        | (1)       |
| 47   | 31-50-0156 | Motor Housing                               | (1)       |
| 48   | 31-53-0105 | Rubber Plug                                 | (1)       |
| 49   | 32-75-3225 | Output Gear                                 | (1)       |
| 50   | 34-40-0160 | O-Ring                                      | (1)       |
| 51   | 34-40-0165 | O-Ring                                      | (1)       |
| 52   | 34-60-0750 | E-Clip                                      | (1)       |
| 53   | 34-60-2330 | E-Clip                                      | (2)       |
| 54   | 34-80-0900 | External Retaining Ring                     | (1)       |
| 55   | 34-80-2975 | 40mm Retaining Ring                         | (1)       |
| 56   | 38-50-6470 | Output Spindle                              | (1)       |
| 57   | 40-50-7753 | Lower Guard Spring                          | (1)       |

**NOTE:** For item #9, some earlier tools may have used 05-74-0970 (M5 x 10 Flat Hd. T-20 screw). A drop of "Blue" Loctite, Type 242 is needed on the threads.

| FIG. | PART NO.   | DESCRIPTION OF PART             | QTY. REQ. |
|------|------------|---------------------------------|-----------|
| 58   | 40-50-8040 | Bevel Detent Spring             | (1)       |
| 59   | 40-50-8370 | Compression Spring              | (1)       |
| 60   | 42-14-1215 | Upper Guard Baffle              | (1)       |
| 61   | 42-36-1121 | Depth Lever Assembly            | (1)       |
| 62   | 42-36-1122 | Bevel Lever Assembly            | (1)       |
| 63   | -----      | Depth Bracket                   | (1)       |
| 64   | -----      | Elevation Pivot Bracket         | (1)       |
| 65   | 42-38-0225 | Rubber Bumper                   | (1)       |
| 66   | 42-42-0105 | Spindle Lock Button             | (1)       |
| 67   | 42-68-0860 | Retaining Clip                  | (1)       |
| 68   | 43-34-0263 | Outer Blade Flange              | (1)       |
| 69   | 43-34-0264 | Inner Blade Flange              | (1)       |
| 70   | 43-44-1210 | Fiber Gasket                    | (1)       |
| 71   | 43-70-0025 | Hinge Pin                       | (1)       |
| 72   | 43-98-0550 | Edge Guide Lock                 | (1)       |
| 73   | 44-10-0675 | Lower Guard Lever               | (1)       |
| 74   | 44-20-1220 | Spindle Lock                    | (1)       |
| 75   | 44-60-1155 | Bevel Detent Pin                | (1)       |
| 76   | 44-76-0050 | Strain Relief                   | (1)       |
| 77   | 45-16-0383 | Shoe                            | (1)       |
| 78   | 45-22-0390 | Bumper Sleeve                   | (1)       |
| 79   | 45-22-0765 | Lower Guard Sleeve              | (1)       |
| 80   | 45-88-0577 | Wave Spring Washer              | (1)       |
| 81   | 45-88-1390 | Plastic Washer                  | (1)       |
| 82   | 45-88-1415 | Bevel Cap                       | (1)       |
| 83   | 45-88-1435 | Curved Washer                   | (2)       |
| 84   | 45-88-7103 | Wave Washer                     | (2)       |
| 85   | 45-88-7480 | Washer                          | (1)       |
| 86   | 45-88-8460 | Washer                          | (2)       |
| 87   | 49-96-0345 | Hex Key                         | (1)       |
| 88   | 14-74-0340 | Shoe Bracket Assembly           | (1)       |
| 89   | 14-74-0330 | Shoe Bevel Assembly             | (1)       |
| 90   | 48-40-4170 | 10-1/4" Saw Blade (Not Shown)   | (1)       |
|      | 28-35-0080 | Rip Fence (Not Shown)           | (1)       |
|      | 42-55-6470 | Steel Carrying Case (Not Shown) | (1)       |

**FIG. LUBRICATION**

2,41,50 Apply a light film of grease or oil to the O-Ring (50) and the bearing bore in the Upper Guard/Gearcase (41) before assembling the Armature Bearing (2).

41 Place 1/2 Oz. Type "Y" Grease, No. 49-08-5270 in gear cavity of Upper Guard/Gearcase (41).

**NOTE:** 90-95% of the old grease must be removed prior to new grease being added.

**FIG. NOTES**

1 Orient the Ball Bearing (1) such that the seal faces the commutator of the Armature (27).

4 Orient the Needle Bearing (4) such that the vendor I.D. is facing the Gear (49). Press the bearing .045" subflush to the gear cavity wall in the Upper Guard/Gearcase (41).

6 Apply "Blue" Loctite, Type 242 to threads of the Rubber Bumper Screw (6) prior to assembly.

8 Apply "Blue" Loctite, Type 242 to the threads of the Bevel Detent Screw (8) prior to assembly.

40 Functionally check the Lower Guard (40) with the saw set at full depth of cut. Place the saw up side down with the Shoe (77) horizontal. Fully retract the Guard using Guard Lever (73) and then release it. The Guard must close briskly. Repeat Guard check two more times.

54 Orient External Retaining Ring (54) such that the beveled face is towards Lower Guard (40).

56,74 Functionally check the Spindle Lock (74). Spindle Lock must return briskly when released from engagement in Output Spindle (56).