

WIRING INSTRUCTIONS

TITLE

14" ABRASIVE CUT OFF MACHINE

BULLETIN

58-01-0552

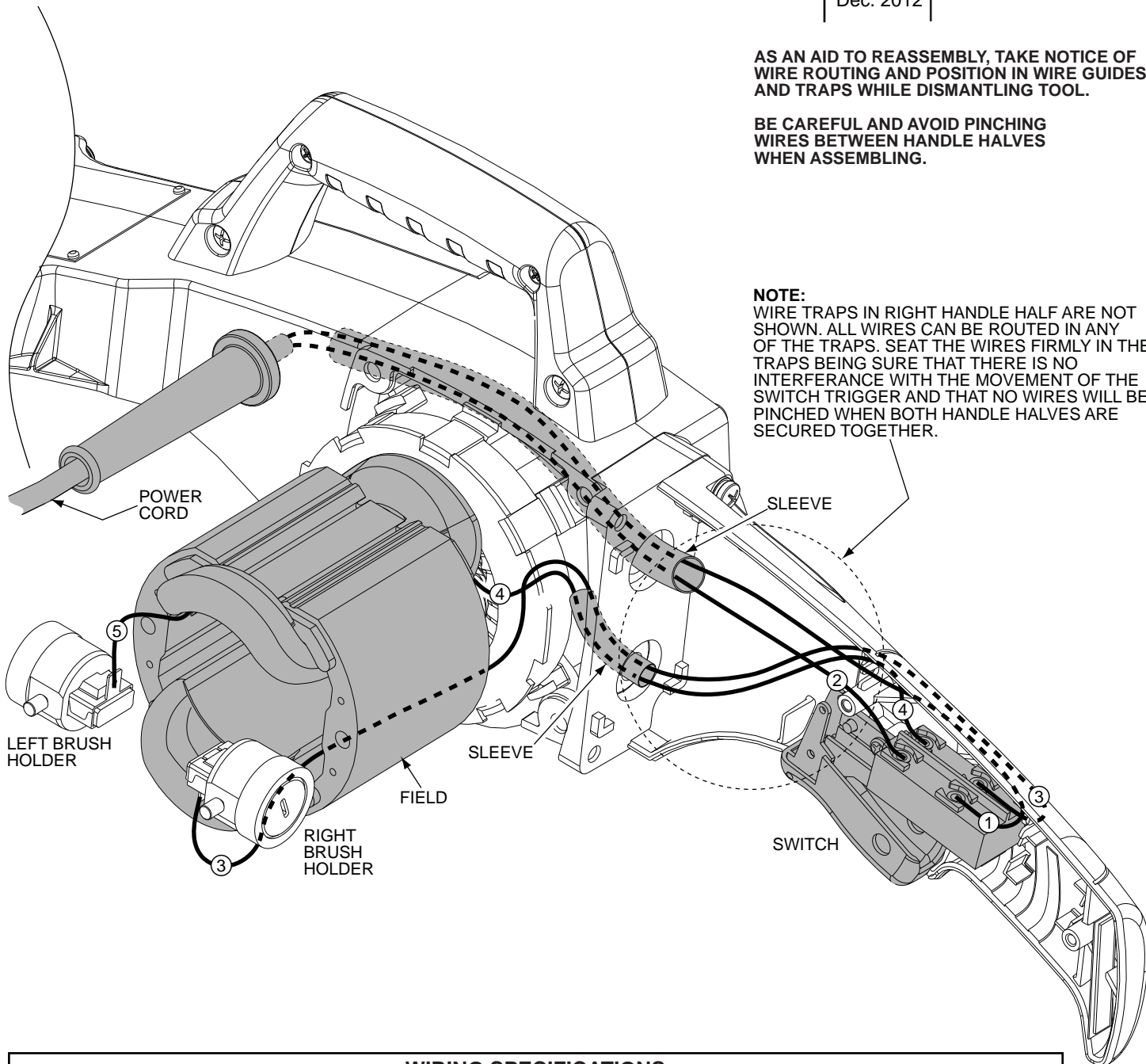
DATE
Dec. 2012

AS AN AID TO REASSEMBLY, TAKE NOTICE OF WIRE ROUTING AND POSITION IN WIRE GUIDES AND TRAPS WHILE DISMANTLING TOOL.

BE CAREFUL AND AVOID PINCHING WIRES BETWEEN HANDLE HALVES WHEN ASSEMBLING.

NOTE:

WIRE TRAPS IN RIGHT HANDLE HALF ARE NOT SHOWN. ALL WIRES CAN BE ROUTED IN ANY OF THE TRAPS. SEAT THE WIRES FIRMLY IN THE TRAPS BEING SURE THAT THERE IS NO INTERFERENCE WITH THE MOVEMENT OF THE SWITCH TRIGGER AND THAT NO WIRES WILL BE PINCHED WHEN BOTH HANDLE HALVES ARE SECURED TOGETHER.



WIRING SPECIFICATIONS

Wire No.	Wire Color	Origin or Gauge	Length	Terminals, Connectors and 1 or 2 End Wire Preparation
1	BLACK	22-64-1422	-----	COMPONENT OF CORD SET. CONNECT TO SWITCH AS SHOWN.
2	WHITE	22-64-1422	-----	COMPONENT OF CORD SET. CONNECT TO SWITCH AS SHOWN.
3	WHITE	18-70-0185	-----	COMPONENT OF FIELD. CONNECT TO SWITCH AND RIGHT BRUSH HOLDER.
4	BLACK	18-70-0185	-----	COMPONENT OF FIELD. CONNECT TO SWITCH AS SHOWN.
5	WHITE	18-70-0185	-----	COMPONENT OF FIELD. CONNECT TO LEFT BRUSH HOLDER AS SHOWN.

WIRING INSTRUCTIONS

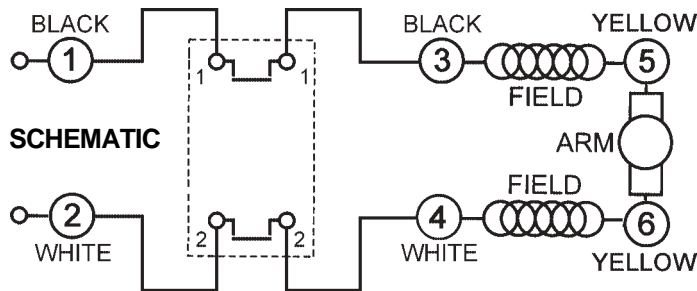
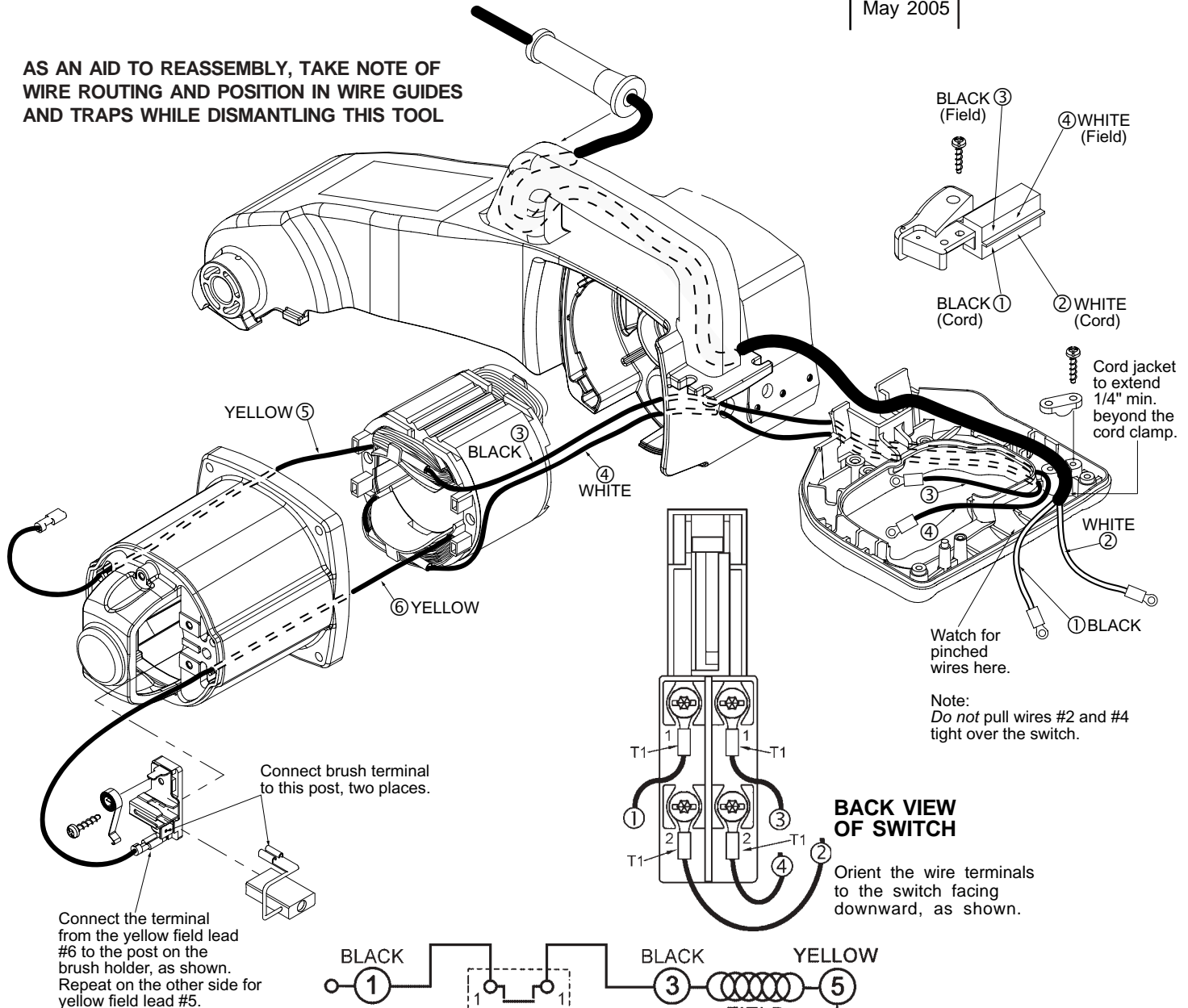
TITLE

CUT-OFF MACHINE

DATE
May 2005

**BULLETIN
58-01-0575**

AS AN AID TO REASSEMBLY, TAKE NOTE OF WIRE ROUTING AND POSITION IN WIRE GUIDES AND TRAPS WHILE DISMANTLING THIS TOOL



WIRING SPECIFICATIONS

Wire No.	Wire Color	Origin	Gauge	Length	Terminals, Connectors and 1 or 2 End Wire Preparation
1	Black	Cord Set	14	-----	Component of cord set. Strip 1/4" for T1.
2	White	Cord Set	14	-----	Component of cord set. Strip 1/4" for T1.
3	Black	Field	14	-----	Component of the field. Strip 1/4" for T1.
4	White	Field	14	-----	Component of the field. Strip 1/4" for T1.
5	Yellow	Field	14	-----	Component of the field.
6	Yellow	Field	14	-----	Component of the field.

BULK LEAD WIRE - BULLETIN NO. 58-01-0003

TERMINAL DESCRIPTION

Code	Part No.	Qty.
T1	23-74-2430	4

Drwg. 2