

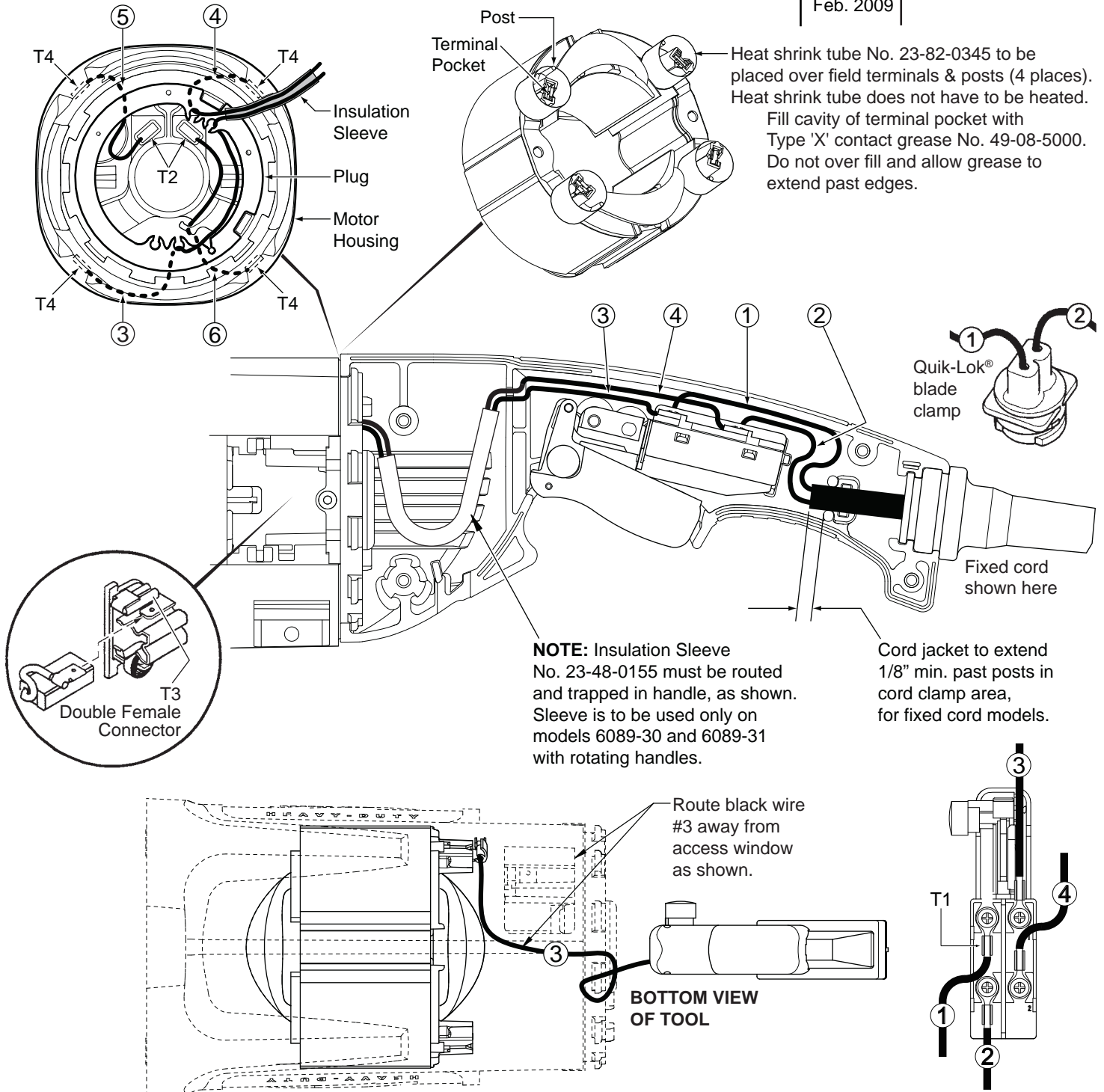
# WIRING INSTRUCTIONS

TITLE

**SANDERS/GRINDERS**

DATE  
Feb. 2009

**BULLETIN  
58-01-1375**



## WIRING SPECIFICATIONS

Wire No.	Wire Color	Origin or Gauge	Length	Terminals, Connectors and 1 or 2 End Wire Preparation
1	Black	Cord/Bld Hsg	----	Component of cord or blade housing assembly. Strip 5/16" for T1.
2	White	Cord/Bld Hsg	----	Component of cord or blade housing assembly. Strip 5/16" for T1.
3	Black	16	13-5/16"	23-94-9310. Strip 7/32" for T1/Strip 5/32" for T4.
4	White	16	11-1/4"	23-94-9315. Strip 7/32" for T1/Strip 5/32" for T4.
5	Red	16	5-1/4"	23-94-9300. Strip 7/32" for T2/Strip 5/32" for T4.
6	White	16	5"	23-94-9305. Strip 7/32" for T2/Strip 5/32" for T4.

BULK LEAD WIRE - BULLETIN NO. 58-01-0003

T1	TO SWITCH
T2	TO MOTOR HOUSING
T3	TO BRUSH HOLDER
T4	TO FIELD

TERMINAL DESCRIPTION		
Code	Part No.	Qty.
T1	23-74-0850	4
T2	23-74-0610	2
T3	23-74-2115	2
T4	23-74-0585	4

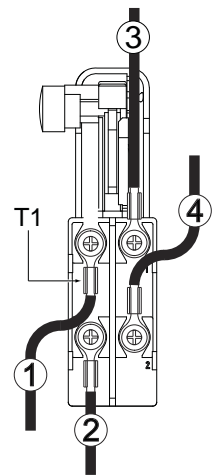
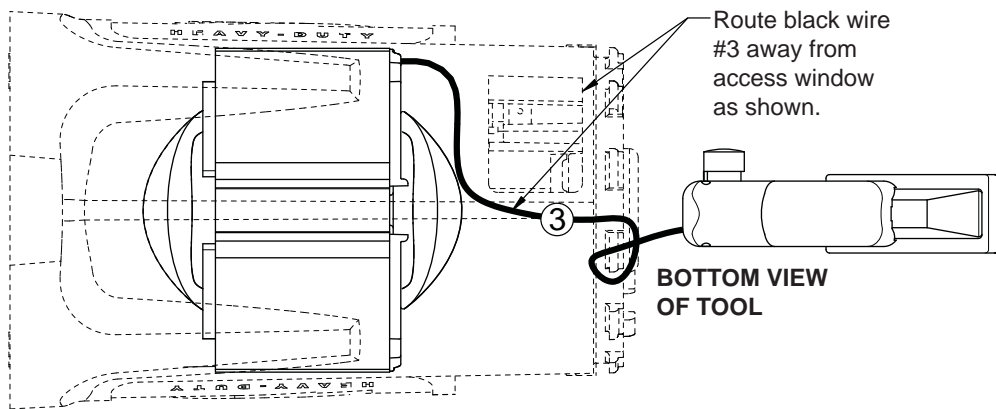
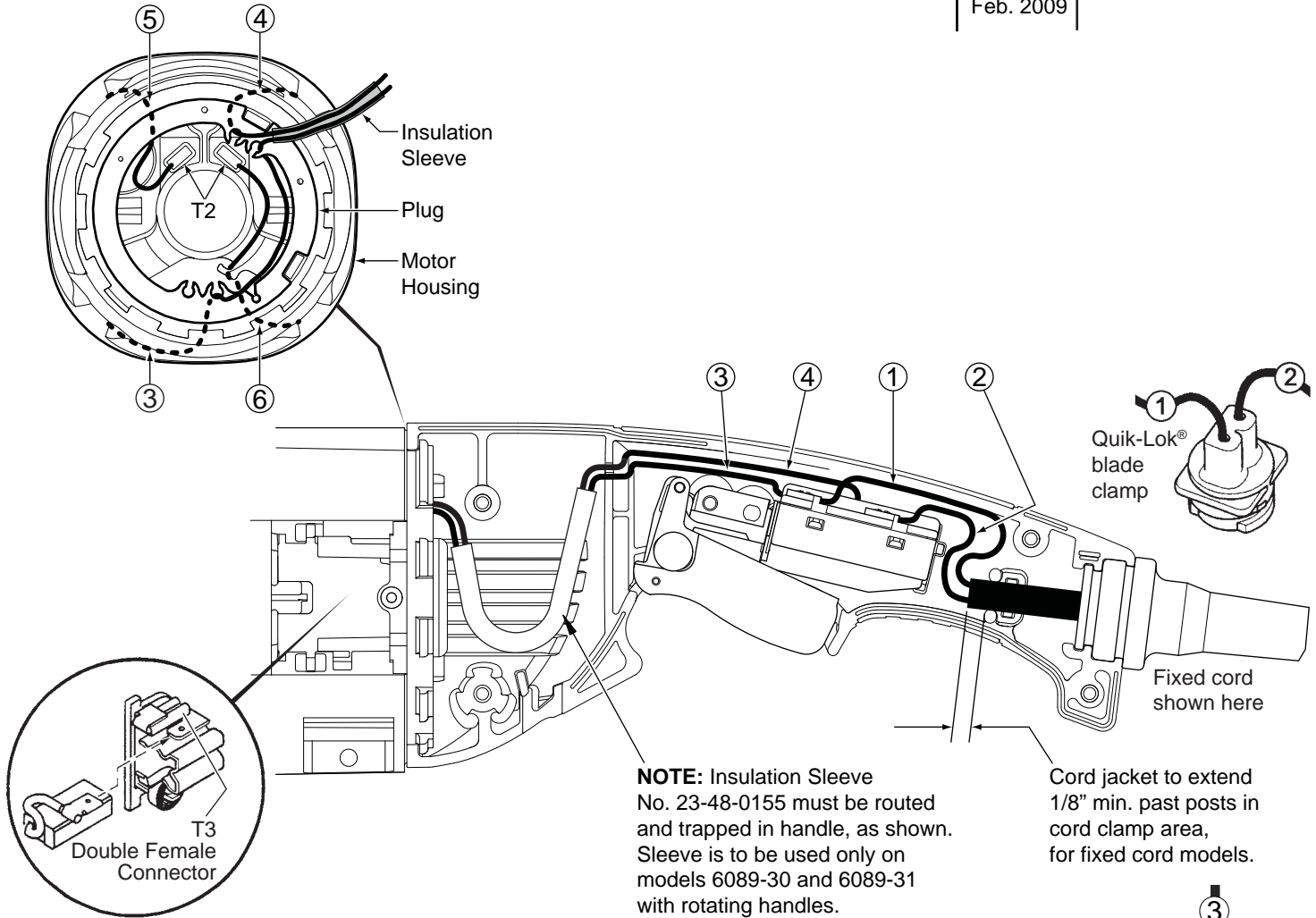
# WIRING INSTRUCTIONS

TITLE

**SANDERS/GRINDERS**

**BULLETIN  
58-01-1376**

DATE  
Feb. 2009



## WIRING SPECIFICATIONS

Wire No.	Wire Color	Origin or Gauge	Length	Terminals, Connectors and 1 or 2 End Wire Preparation
1	Black	Cord/Bld Hsg	----	Component of cord or blade housing assembly. Strip 5/16" for T1.
2	White	Cord/Bld Hsg	----	Component of cord or blade housing assembly. Strip 5/16" for T1.
3	Black	14	12-3/4"	Component of field. Strip 5/16" for T1.
4	White	14	11"	Component of field. Strip 5/16" for T1.
5	Red	16	5-3/4"	Component of field. Strip 7/32" for T2.
6	White	16	5"	Component of field. Strip 7/32" for T2.

BULK LEAD WIRE - BULLETIN NO. 58-01-0003

T1	TO SWITCH
T2	TO MOTOR HOUSING
T3	TO BRUSH HOLDER

TERMINAL DESCRIPTION		
Code	Part No.	Qty.
T1	23-74-0850	4
T2	23-74-0610	2
T3	23-74-2115	2

Drwg. 1