

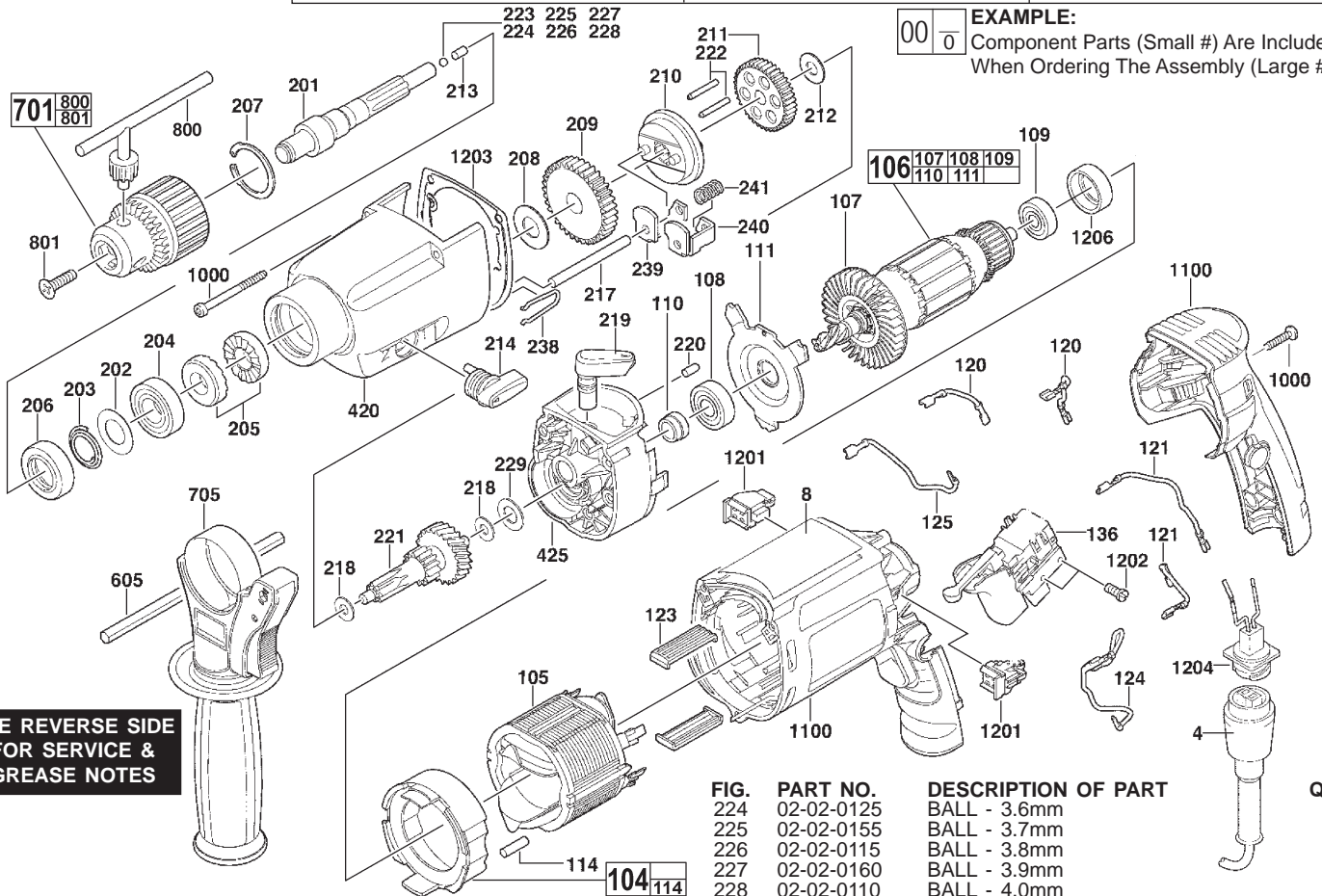


# SERVICE PARTS LIST

BULLETIN NO.  
54-24-0380

SPECIFY CATALOG NO. AND SERIAL NO. WHEN ORDERING PARTS		REVISED BULLETIN
<b>1/2" HAMMER-DRILL</b>		
CATALOG NO.	<b>5387-20</b>	SERIAL NUMBER
		<b>A68A</b>

**EXAMPLE:**  
Component Parts (Small #) Are Included  
When Ordering The Assembly (Large #).



SEE REVERSE SIDE  
FOR SERVICE &  
GREASE NOTES

FIG.	PART NO.	DESCRIPTION OF PART	QTY.
	4	48-76-5010	1
	8	12-99-5381	1
	104	42-14-0115	1
	105	18-07-0121	1
	106	16-07-0124	1
	107	22-84-0940	1
	108	02-04-0063	1
	109	02-04-0064	1
	110	45-22-0055	1
	111	42-92-0145	1
	114	45-30-0210	4
	120	23-94-0041	2
	121	23-94-0042	2
	123	42-70-1100	2
	124	23-94-0043	1
	125	23-94-0044	1
	136	23-66-0034	1
	201	38-50-0100	1
	202	45-88-8295	1
	203	40-50-8890	1
	204	02-04-1830	1
	205	44-84-0295	1
	206	44-90-0004	1
	207	44-90-0019	1
	208	45-88-1300	1
	209	32-75-0045	1
	210	44-90-0065	1
	211	32-75-0055	1
	212	45-88-0335	1
	213	44-60-1490	1
	214	44-10-0025	1
	217	44-60-1470	1
	218	45-88-8345	2
	219	44-10-0035	1
	220	44-60-1480	1
	221	32-60-0065	1
	222	44-60-1475	2
	223	02-02-0105	1
	224	02-02-0125	1
	225	02-02-0155	1
	226	02-02-0115	1
	227	02-02-0160	1
	228	02-02-0110	1
	229	45-88-0315	1
	238	40-50-0150	1
	239	42-70-0085	1
	240	42-70-0090	1
	241	40-50-0335	1
	420	31-40-0095	1
	425	28-28-0025	1
	605	43-46-0172	1
	701	48-66-0087	1
	800	48-66-4040	1
	801	05-80-0430	1
	1000	14-46-0030	1
	1100	14-38-0145	1
	1200	14-46-0020	1
	1201	22-16-0065	1
	1202	05-81-0932	2
	1203	45-06-0025	1
	1204	22-56-0050	1
	1206	45-22-0540	1

FIG.	PART NO.	DESCRIPTION OF PART	QTY.
	224	02-02-0125	1
	225	02-02-0155	1
	226	02-02-0115	1
	227	02-02-0160	1
	228	02-02-0110	1
	229	45-88-0315	1
	238	40-50-0150	1
	239	42-70-0085	1
	240	42-70-0090	1
	241	40-50-0335	1
	420	31-40-0095	1
	425	28-28-0025	1
	605	43-46-0172	1
	701	48-66-0087	1
		48-66-4040	1
	705	49-15-5300	1
	800	48-66-3280	1
	801	05-80-0430	1
	1000	14-46-0030	1
	1100	14-38-0145	1
	1200	14-46-0020	1
	1201	22-16-0065	1
	1202	05-81-0932	2
	1203	45-06-0025	1
	1204	22-56-0050	1
	1206	45-22-0540	1

**FIG. 106, 1100, 1206** **NOTES:**  
RUBBER SLEEVE (BEARING CUP) TO BE PLACED INTO MOTOR HOUSING ASSEMBLY PRIOR TO INSTALLING ARMATURE ASSEMBLY.

111, 220      DEMPLE IN BEARING COVER TO FACE PIN.

209, 210      FLATS OF SHIFT RING TO FACE SPINDLE GEAR.

223-228      THE CORRECT SIZE BALL MUST BE CHOSEN TO PROPERLY SHIM OUT THE END PLAY IN THE SPINDLE. SPINDLE IS TO HAVE A SMALL AMOUNT OF END PLAY WITHOUT BEING TIGHT.

## 5387-20 SERVICE AND GREASE NOTES

### Greasing Instructions

Type "E" Grease, No. 49-08-4122 (Included in Maintenance Set No. 14-46-0020)

Type "U" Grease, No. 49-08-0150

1. Clean ratchets faces (205) completely and apply a light coat of type "U" grease, No. 49-08-0150.
2. Place 1/16 oz. of type "E" grease, No. 49-08-4122, in and around the ratchet cavity of the gearcase (420). Other than the mating faces, lightly coat the ratchets (205) with Type "E" Grease, No. 49-08-4122.
3. Coat spindle splines (201), pin (213) and ball (223-228) with 1/16 oz. of type "E" grease, No. 49-08-4122.
4. Place 1/8 oz. of type "E" grease, No. 49-08-4122, in gear cavity of diaphragm (425).
5. Grease gear assembly (parts 208, 209, 210, 211, 212, 217, 218, 221, 222, 229, 239, 240 and 241) using 5/8 oz. type "E" grease, No. 49-08-4122.
6. Using type "E" grease, No. 49-08-4122, lightly grease O-ring on Item (219) before assembly to gearcase.

Total amount of type "E" grease: approximately 1 oz.

