

WIRING INSTRUCTIONS

TITLE

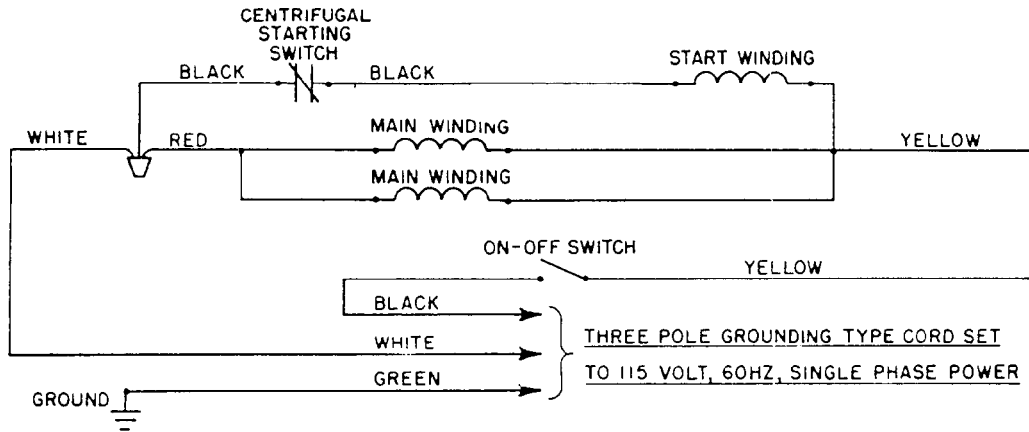
BENCH GRINDERS

BULLETIN

DATE
AUG. '86

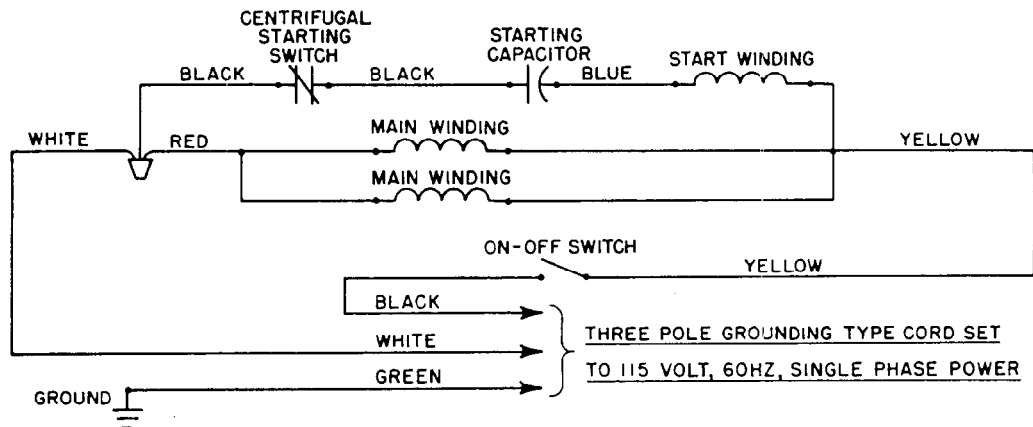
58-01-0026

SCHEMATIC DIAGRAM FOR SINGLE PHASE GRINDERS



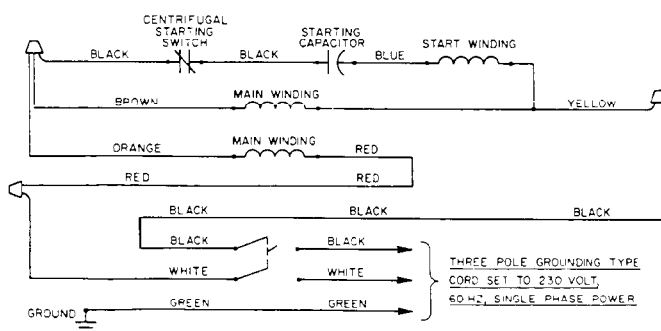
CAT. NO. 4931 & 4935

SCHEMATIC DIAGRAM FOR SINGLE PHASE GRINDERS

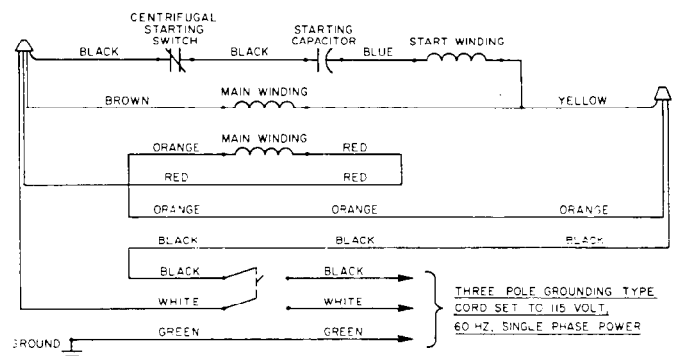


CAT. NO. 4991, 4995 & 5051

230 VOLT SCHEMATIC DIAGRAM FOR SINGLE PHASE GRINDERS

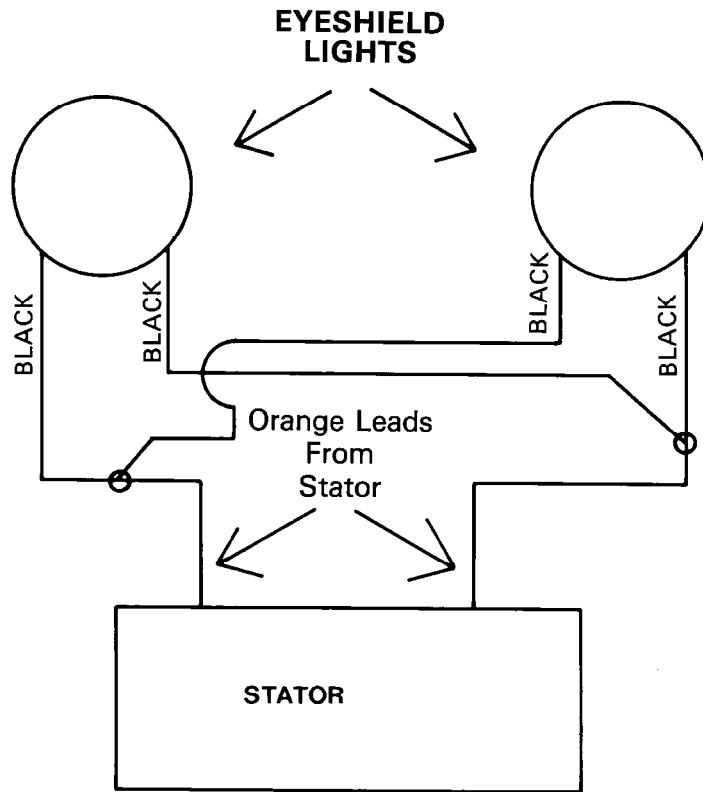


115 VOLT SCHEMATIC DIAGRAM FOR SINGLE PHASE GRINDERS



CAT. NO. 5091

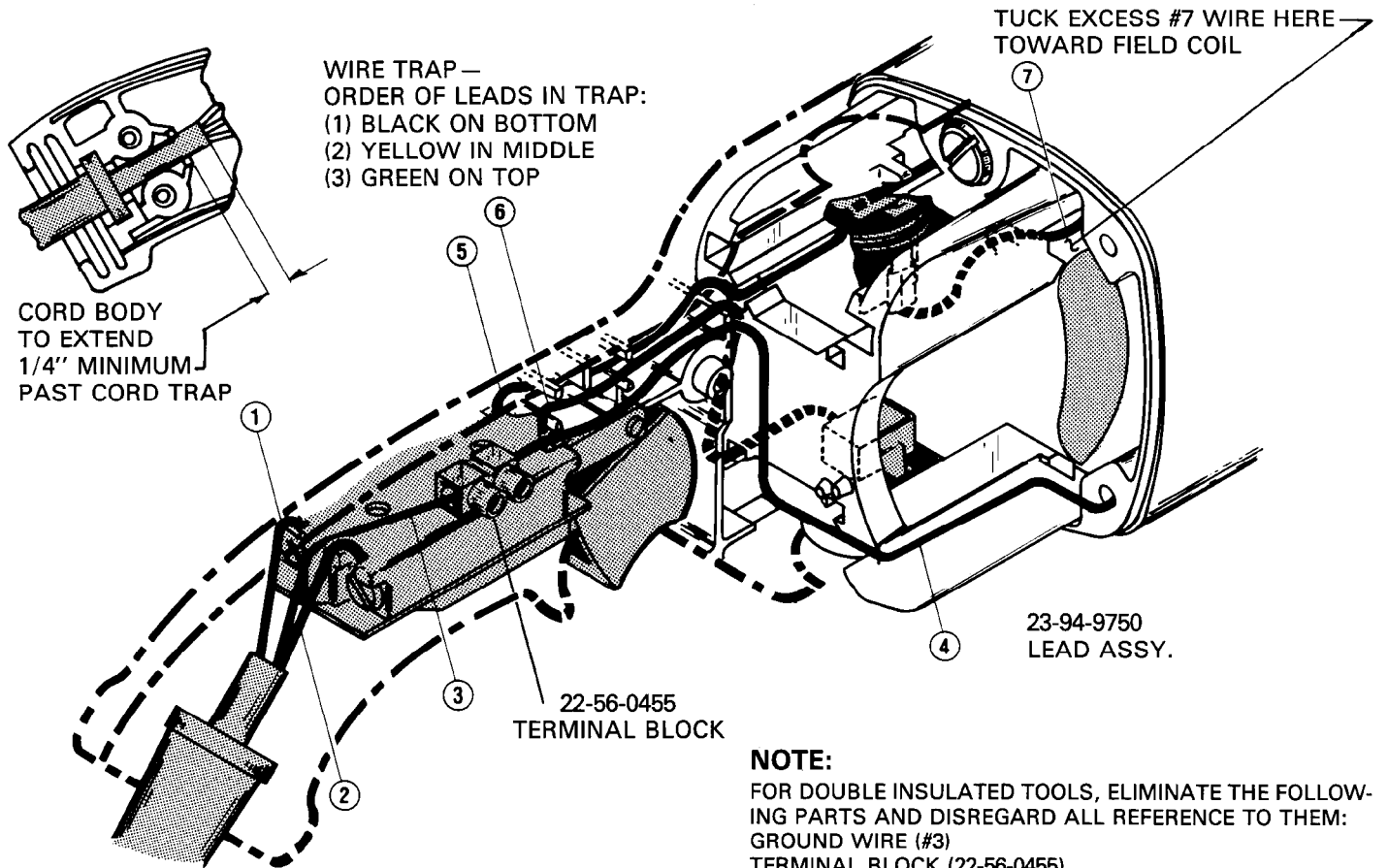
**CAT. NO. 4931, 4991, 5051 & 5091
12 VOLT LIGHT SYSTEM**



**EYESHIELD LIGHT VOLTAGE IS OBTAINED
FROM A SEPARATE ISOLATED COIL IN THE STATOR.**

WIRING INSTRUCTIONS

TITLE	SANDER	BULLETIN
	DATE Oct. '85	58-01-0301



WIRE TRAP —
ORDER OF LEADS IN TRAP:
 (1) BLACK ON BOTTOM
 (2) YELLOW IN MIDDLE
 (3) GREEN ON TOP

TUCK EXCESS #7 WIRE HERE
 TOWARD FIELD COIL

23-94-9750
 LEAD ASSY.

22-56-0455
 TERMINAL BLOCK

NOTE:
 FOR DOUBLE INSULATED TOOLS, ELIMINATE THE FOLLOWING PARTS AND DISREGARD ALL REFERENCE TO THEM:
 GROUND WIRE (#3)
 TERMINAL BLOCK (22-56-0455)
 GROUND LEAD (#4)
 GROUND LEAD TERMINAL (T3)

AS AN AID IN REASSEMBLY, TAKE NOTE OF WIRE ROUTING AND POSITION IN WIRE GUIDES AND TRAPS WHILE DISMANTLING TOOL.

WIRING SPECIFICATIONS				
Wire No.	Wire Color	Origin or Gauge	Length	Terminals, Connectors and 1 or 2 End Wire Preparation
1	BLACK	CORD	1-1/2"	STRIP 3/16" FOR T1
2	WHITE	CORD	1-1/2"	STRIP 3/16" FOR T1
3	GREEN	CORD	1-1/2"	STRIP 3/16" AND TIN FOR TERMINAL BLOCK
4	GREEN	23-94-9750	9"	STRIP 3/16" FOR T3
				STRIP 3/16" AND TIN FOR TERMINAL BLOCK
5	BLACK	FIELD	6-1/2"	STRIP 3/16" FOR T1
6	YELLOW	BRUSH	6"	STRIP 3/16" FOR T1
				STRIP 1/8" FOR T2
7	YELLOW	FIELD	1-3/4"	STRIP 1/8" FOR T2

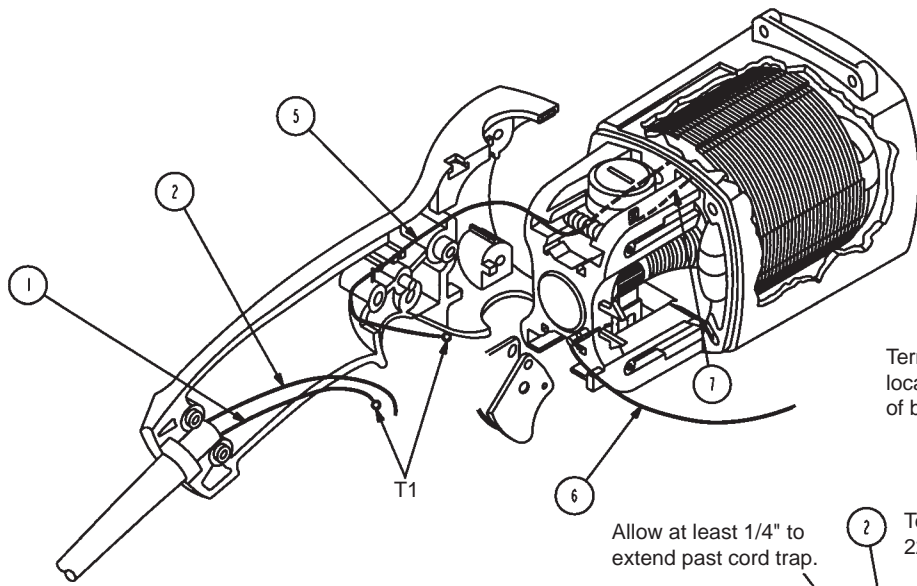
NOTE:
 All leads must be held to $\pm 1/8"$.
 All field leads to be measured from and perpendicular to laminations.
 All lead lengths are before stripping.

TERMINAL DESCRIPTION		
Code	Part No.	Qty.
T1	23-74-0851	4
T2	23-74-0755	2
T3	23-74-0810	1

WIRING INSTRUCTIONS

TITLE	SANDER	DATE
		Mar. 2012

BULLETIN
58-01-0313



NOTE:

As an aid in reassembly, take note of wire routing and position in wire guides and traps while dismantling tool.

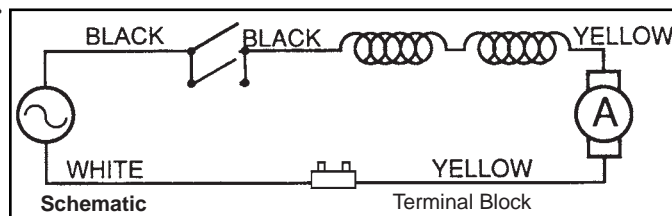
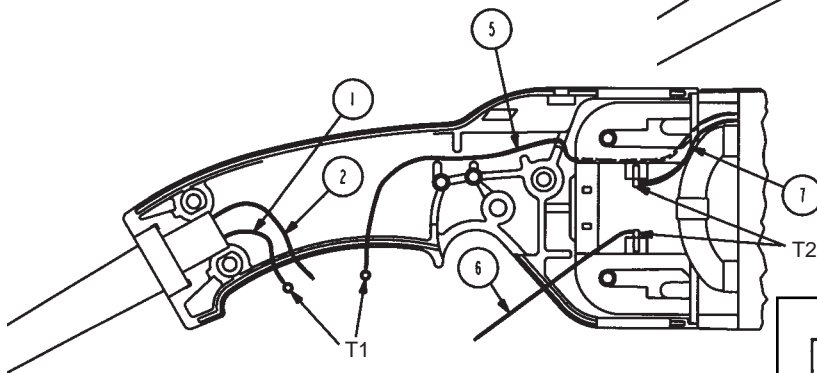
Allow at least 1/4" to extend past cord trap.

Terminal to be located on other side of brush holder.

Terminal Block 22-56-0456

Secure until detent matches hole in male connector.

Wires must be in traps, can be in any order.



WIRING SPECIFICATIONS

Wire No.	Wire Color	Origin or Part No.	Gauge	Length	Terminals, Connectors and End Wire Preparation
1	Black	Cord	16	1-1/2"	Strip 3/16" for T1
2	White	Cord	16	1-1/2"	Strip 3/16" and tin for C1
5	Blk/Bl	Field	16	7"	Strip 3/16" for T1
6	Yellow	Brush	16	8"	Strip 3/16" and tin for C1
					Strip 1/8" for T2
7	Yel/Rd	Field	16	1-3/4"	Strip 1/8" for T2

BULK LEAD WIRE - BULLETIN 58-01-0003

NOTE:

All lead lengths are before stripping. All field leads are to be measured from and perpendicular to laminations. All leads must be held to $\pm 1/8"$ unless specified elsewhere.

TERMINAL DESCRIPTION

Code	Part No.	Qty.
T1	23-74-0840	2
T2	23-74-0750	2

CONNECTOR DESCRIPTION

Code	Part No.	Qty.
C1	22-56-0456	1

WIRING INSTRUCTIONS

TITLE

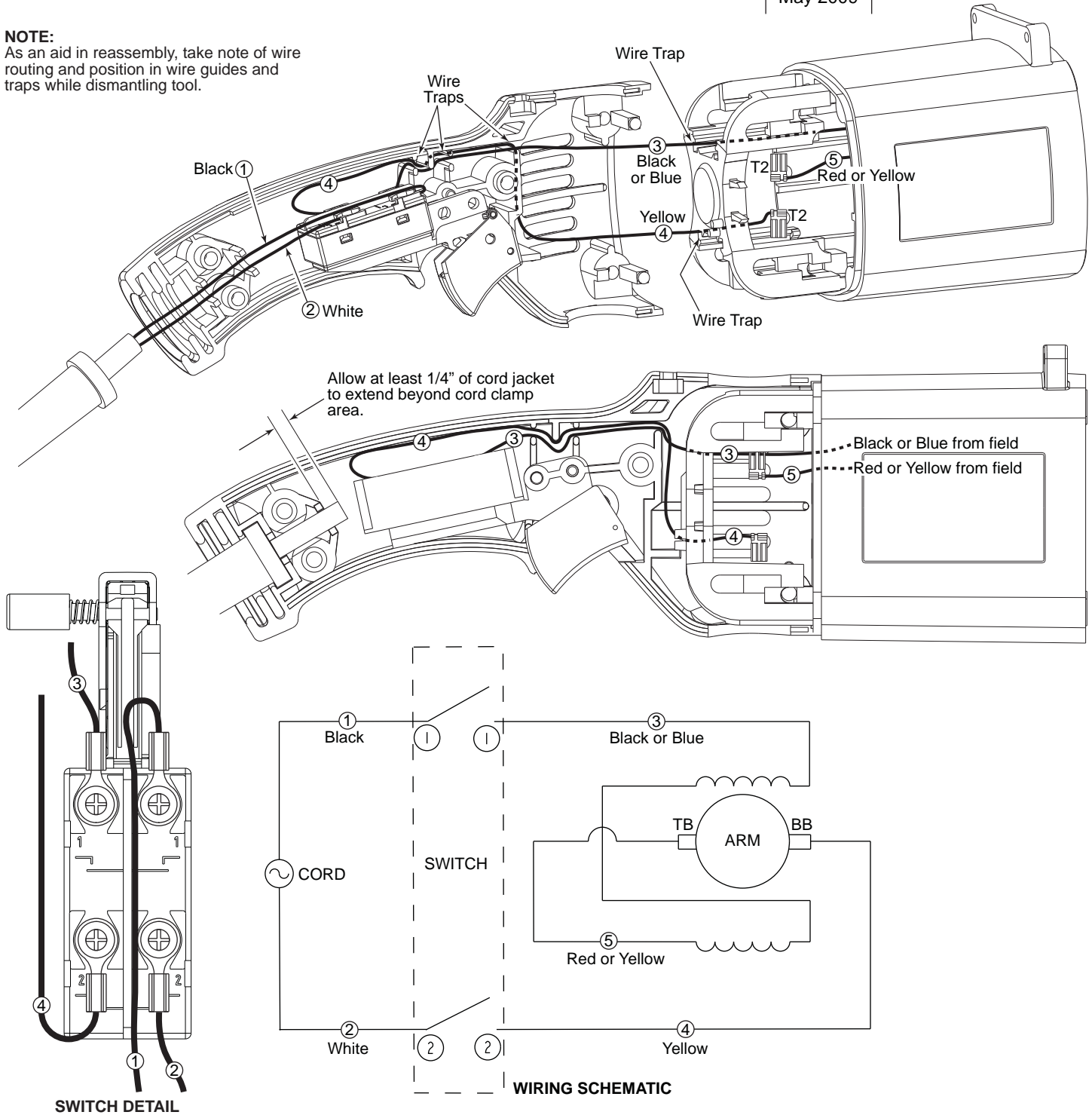
SANDER / POLISHER / GRINDERS

**BULLETIN
58-01-0314**

DATE
May 2009

NOTE:

As an aid in reassembly, take note of wire routing and position in wire guides and traps while dismantling tool.



WIRING SPECIFICATIONS					
Wire No.	Wire Color	Origin or Part No.	Gauge	Length	Terminals, Connectors and End Wire Preparation
1	Black	Cord	16	3"	Strip 3/16" for T1. Connect to right '1' on switch.
2	White	Cord	16	1-1/4"	Strip 3/16" for T1. Connect to right '2' on switch.
3	Black/Blue	Field	16	7-1/2"	Strip 3/16" for T1. Connect to left '1' on switch.
4	Yellow	-----	16	7-7/8"	Strip 3/16" for T1, connect to left '2' on switch. Strip 1/8" for T2, connect to bottom brush.
5	Red/Yellow	Field	16	3"	Strip 1/8" for T2. Connect to top brush.

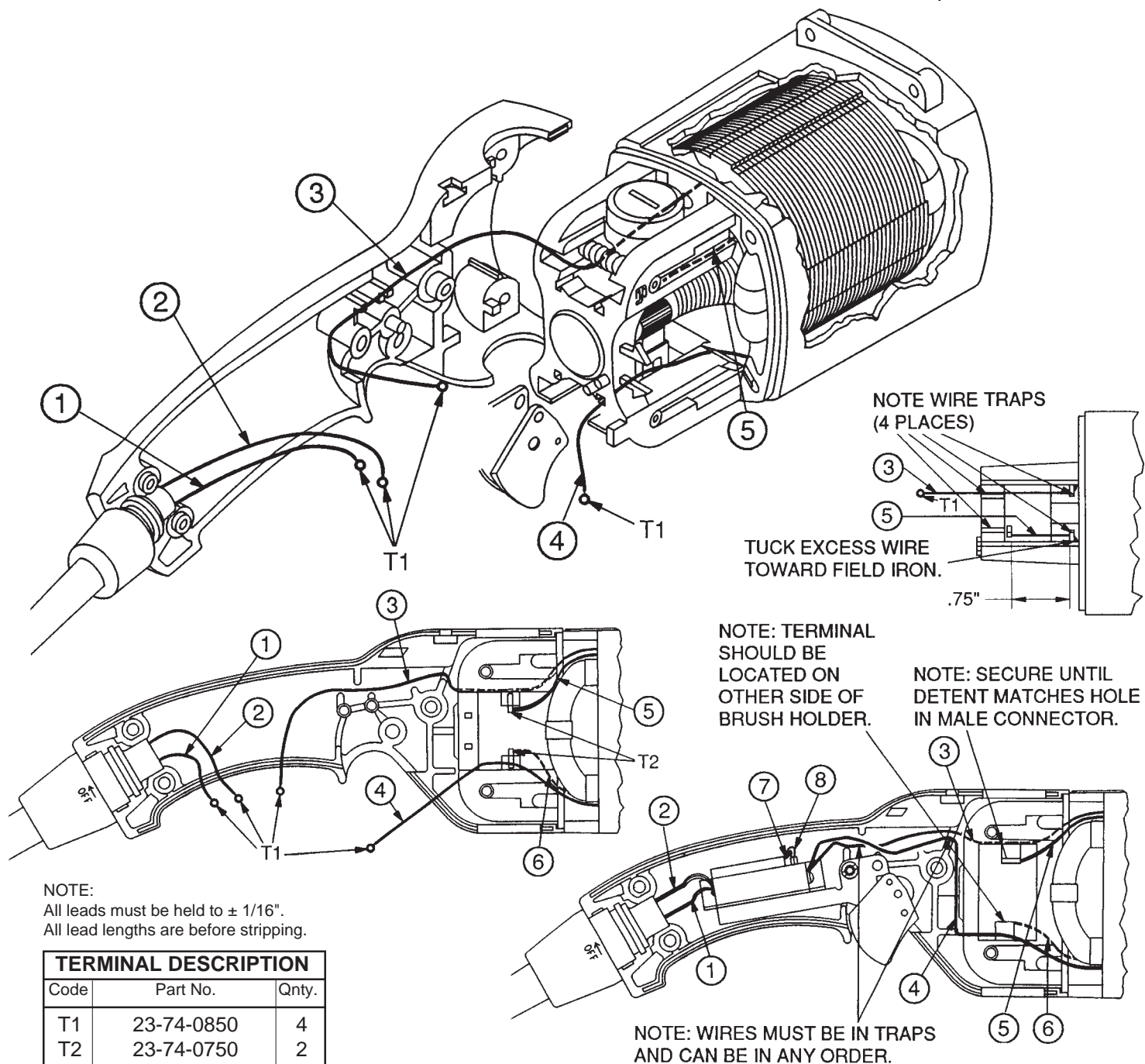
NOTE:

All lead lengths are before stripping. All field leads are to be measured from and perpendicular to laminations. All leads must be held to ± 1/8" unless specified elsewhere.

TERMINAL DESCRIPTION		
Code	Part No.	Qty.
T1	23-74-0840	4
T2	23-74-0750	2

WIRING INSTRUCTIONS

TITLE	GRINDERS	DATE	BULLETIN
		Feb. 2003	58-03-1750



NOTE:
All leads must be held to $\pm 1/16$ ".
All lead lengths are before stripping.

TERMINAL DESCRIPTION		
Code	Part No.	Qty.
T1	23-74-0850	4
T2	23-74-0750	2

WIRING SPECIFICATIONS						
Wire No.	Wire Color 230 Volt	Wire Color 5196-55 110 Volt	Wire Color 5223-55 110 Volt	Origin or Gauge	Length	Terminals, Connectors and 1 or 2 End Wire Preparation
1	Blue	White	White	Cord/16	1.50	Component of the blade hsg. assy./ Strip .19 for T1.
2	Brown	Black	Black	Cord/16	1.50	Component of the blade hsg. assy./ Strip .19 for T1.
3	Yellow	Black	Red	Field/16	7.00	Component of the field. / Strip .19 for T1.
4	Yellow	Black	Red	Field/16	7.00	Component of the field. / Strip .19 for T1.
5	Blue	Blue	Blue	Field/16	1.75	Component of the field. / Strip .19 for T2.
6	Blue	Blue	Blue	Field/16	1.75	Component of the field. / Strip .19 for T2.
7	Black	Black	Black	Suppressor	----	Component of the switch kit.
8	Black	Black	Black	Suppressor	----	Component of the switch kit.

BULK LEAD WIRE - BULLETIN 58-01-0003