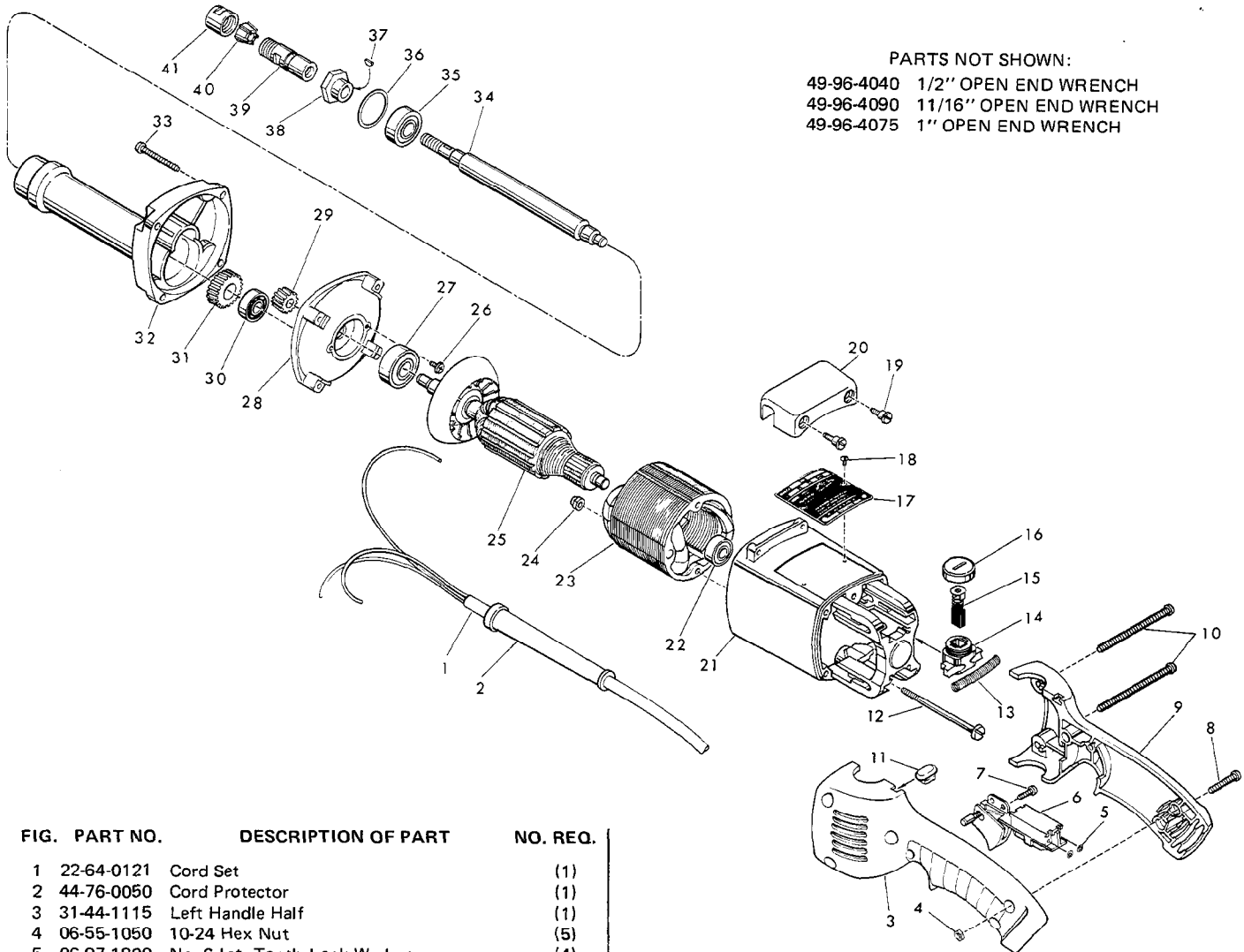




SERVICE PARTS LIST

BULLETIN NO.
54-22-1040

| | | | |
|--|------------------------------|----------------------------|-----------|
| SPECIFY CATALOG NO. AND SERIAL NO. WHEN ORDERING PARTS | | REVISED BULLETIN | DATE |
| 2" DIE GRINDER | | | Sept. '83 |
| CATALOG NO. 5196 | STARTING SERIAL NO. 675-1001 | WIRING INSTRUCTION | |
| | | 58-01-0301 | |
| CAT. NO. 5196-6 | START SER. NO. 675-1001 | BILINGUAL LABEL 10-98-6125 | |



PARTS NOT SHOWN:

- 49-96-4040 1/2" OPEN END WRENCH
- 49-96-4090 11/16" OPEN END WRENCH
- 49-96-4075 1" OPEN END WRENCH

| FIG. | PART NO. | DESCRIPTION OF PART | NO. REQ. |
|------|------------|--------------------------------------|----------|
| 1 | 22-64-0121 | Cord Set | (1) |
| 2 | 44-76-0050 | Cord Protector | (1) |
| 3 | 31-44-1115 | Left Handle Half | (1) |
| 4 | 06-55-1050 | 10-24 Hex Nut | (5) |
| 5 | 06-97-1800 | No. 6 Int. Tooth Lock Washer | (4) |
| 6 | 23-66-0255 | Switch | (1) |
| 7 | 06-95-0205 | 8-16 x 1/2 Pan Hd. Thread Form Screw | (1) |
| 8 | 06-81-4206 | 10-24 x 7/8" Pos. Pan Hd. Screw | (3) |
| 9 | 31-44-1110 | Right Handle Half | (1) |
| 10 | 06-81-5775 | 10-24 x 2-3/4" Pos. Pan Hd. Screw | (2) |
| 11 | 42-38-0190 | Bumper | (1) |
| 12 | 06-81-7480 | 10-32 x 2-3/4" Flat Hd. Screw | (2) |
| 13 | 40-50-7770 | Brush Holder Spring | (2) |
| 14 | 22-22-1300 | Brush Holder Assembly | (2) |
| 15 | 22-18-0620 | Carbon Brush Assembly | (2) |
| 16 | 23-44-0180 | Brush Retaining Screw | (2) |
| 17 | 12-99-0290 | Nameplate Blank | (1) |
| 18 | 06-85-0200 | Nameplate Screw | (2) |
| 19 | 45-04-0570 | Shoulder Screw | (2) |
| 20 | 31-70-0125 | Tool Rest | (1) |
| 21 | 31-50-0250 | Motor Housing | (1) |
| 22 | 02-04-0845 | Ball Bearing | (1) |
| 23 | 18-50-0090 | 120 Volt Field | (1) |
| 24 | 06-57-3005 | 10-32 Locking Hex Nut | (2) |
| 25 | 16-50-0130 | 120 Volt Armature | (1) |
| 26 | 06-95-0209 | 8-32 x 3/8" Taptite Screw | (2) |

| FIG. | PART NO. | DESCRIPTION OF PART | NO. REQ. |
|------|------------|--|----------|
| 27 | 02-04-1230 | Ball Bearing | (1) |
| 28 | 28-28-1565 | Diaphragm | (1) |
| 29 | 32-02-3020 | Armature Gear | (1) |
| 30 | 02-04-0910 | Ball Bearing | (1) |
| 31 | 32-75-3030 | Spindle Gear | (1) |
| 32 | 28-50-6190 | Spindle Housing | (1) |
| 33 | 06-95-0365 | 10-14 x 1-3/8" Pan Hd. Thread Form Screw | (4) |
| 34 | 38-50-5320 | Spindle Shaft | (1) |
| 35 | 02-04-1230 | Ball Bearing | (1) |
| 36 | 34-80-2600 | Internal Retaining Ring | (1) |
| 37 | 06-42-0400 | Woodruff Key | (1) |
| 38 | 43-34-0390 | Collet Flange | (1) |
| 39 | 48-68-0040 | 1/4" Collet Body | (1) |
| 40 | 48-66-0975 | 1/4" Collet | (1) |
| 41 | 48-68-0030 | 1/4" Collet Nut | (1) |



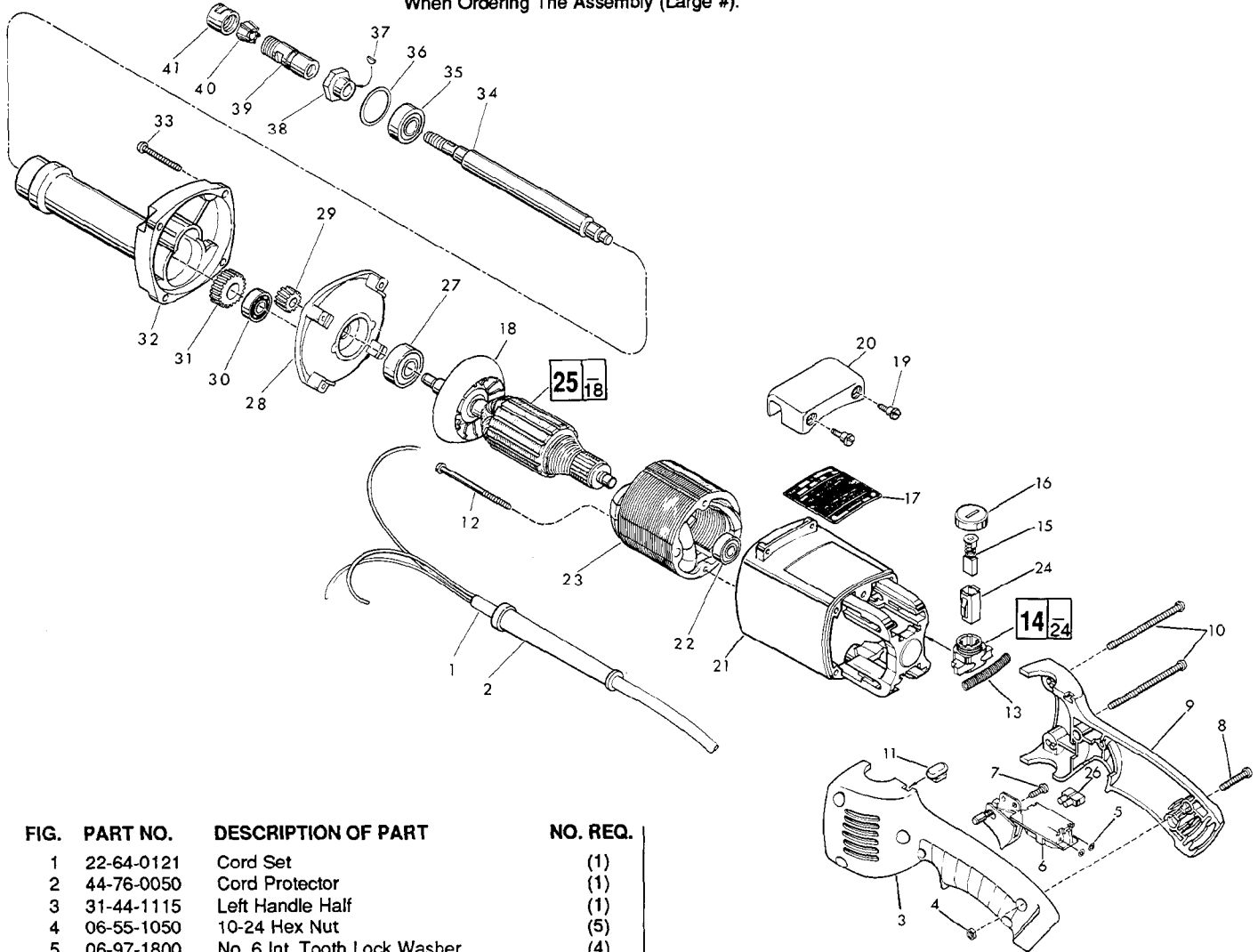
SERVICE PARTS LIST

BULLETIN NO.
54-22-1041

| | | | |
|---|-------------------------------------|---------------------------|-------------|
| SPECIFY CATALOG NO. AND SERIAL NO. WHEN ORDERING PARTS | | REVISED BULLETIN | DATE |
| 2" DIE GRINDER | | 58-01-1040 | Nov. '88 |
| CATALOG NO. 5196 | STARTING SERIAL NO. 675-8916 | WIRING INSTRUCTION | |
| | | 58-01-0301 | |

00 0

EXAMPLE:
Component Parts (Sm#) Are Included
When Ordering The Assembly (Large #).



| FIG. | PART NO. | DESCRIPTION OF PART | NO. REQ. |
|------|----------|--|----------|
| | 1 | 22-64-0121 Cord Set | (1) |
| | 2 | 44-76-0050 Cord Protector | (1) |
| | 3 | 31-44-1115 Left Handle Half | (1) |
| | 4 | 06-55-1050 10-24 Hex Nut | (5) |
| | 5 | 06-97-1800 No. 6 Int. Tooth Lock Washer | (4) |
| | 6 | 23-66-0255 Switch | (1) |
| | 7 | 06-82-7409 8-16x1/2 Pan Hd. Plastite Torx Screw | (1) |
| | 8 | 06-82-2568 10-24 x 7/8" Pan Hd. Slit. Torx Screw | (3) |
| | 9 | 31-44-1110 Right Handle Half | (1) |
| | 10 | 06-82-2598 10-24x2-3/4" Pan Hd. Slit. Torx Screw | (2) |
| | 11 | 42-38-0190 Bumper | (1) |
| ★ | 12 | 06-82-7375 8-16 x 2-1/2" Torx Taptite Screw | (2) |
| | 13 | 40-50-7770 Brush Holder Spring | (2) |
| ★ | 14 | 22-22-1325 Brush Holder Assembly | (2) |
| ★ | 15 | 22-18-0680 Carbon Brush Assembly | (2) |
| ★ | 16 | 23-44-0210 Brush Retaining Screw | (2) |
| ★ | 17 | 12-99-0292 Nameplate (Service) | (1) |
| | 18 | 22-84-0710 Fan | (1) |
| | 19 | 45-04-0570 Shoulder Screw | (2) |
| | 20 | 31-70-0125 Tool Rest | (1) |
| ★ | 21 | 31-50-0540 Motor Housing | (1) |
| | 22 | 02-04-0845 Ball Bearing | (1) |
| | 23 | 18-50-0090 120 Volt Field | (1) |
| | 24 | 22-20-0660 Brush Tube | (2) |
| | 25 | 16-50-0130 120 Volt Armature | (1) |
| | 26 | 22-56-0456 Terminal Block | (1) |
| | 27 | 02-04-1230 Ball Bearing | (1) |
| | 28 | 28-28-1565 Diaphragm | (1) |
| | 29 | 32-02-3020 Armature Gear | (1) |

| FIG. | PART NO. | DESCRIPTION OF PART | NO. REQ. |
|------|----------|---|----------|
| | 30 | 02-04-0910 Ball Bearing | (1) |
| | 31 | 32-75-3030 Spindle Gear | (1) |
| | 32 | 28-50-6190 Spindle Housing | (1) |
| | 33 | 06-82-7407 10-14 x 1-9/16" Pan Hd. Torx Screw | (4) |
| | 34 | 38-50-5320 Spindle Shaft | (1) |
| | 35 | 02-04-1230 Ball Bearing | (1) |
| | 36 | 34-80-2600 Internal Retaining Ring | (1) |
| | 37 | 06-42-0400 Woodruff Key | (1) |
| | 38 | 43-34-0390 Collet Flange | (1) |
| | 39 | 48-68-0040 1/4" Collet Body | (1) |
| | 40 | 48-66-0975 1/4" Collet | (1) |
| | 41 | 48-68-0030 1/4" Collet Nut | (1) |
| | | 49-96-4040 1/2" Open End Wrench | (1) |
| | | 49-96-4090 11/16" Open End Wrench | (1) |
| | | 49-96-4075 1" Open End Wrench | (1) |

FIG. LUBRICATION

32 3/4 Oz. Type "D" Grease, No. 49-08-4110.



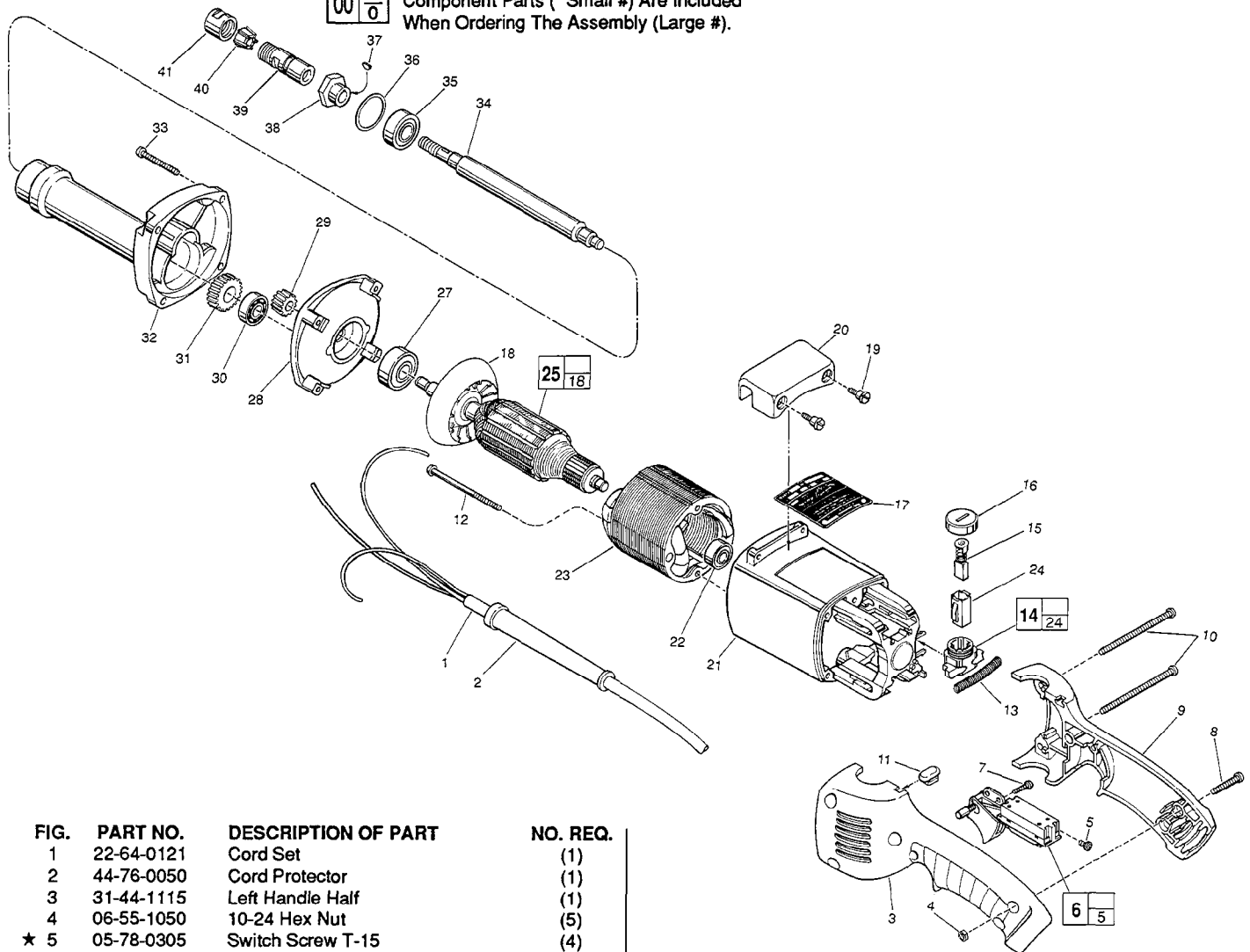
SERVICE PARTS LIST

BULLETIN NO.
54-22-1042

| | | | |
|---|---------------------------------|--|------------------------|
| SPECIFY CATALOG NO. AND SERIAL NO. WHEN ORDERING PARTS | | REVISED BULLETIN 58-01-1041 | DATE July'93 |
| 2" DIE GRINDER | | | |
| CATALOG NO. 5196 | STARTING SERIAL NO. 675A | WIRING INSTRUCTION 58-01-0301 | |



EXAMPLE:
Component Parts (Small #) Are Included
When Ordering The Assembly (Large #).



| FIG. | PART NO. | DESCRIPTION OF PART | NO. REQ. |
|------|----------|--|----------|
| | 1 | 22-64-0121 Cord Set | (1) |
| | 2 | 44-76-0050 Cord Protector | (1) |
| | 3 | 31-44-1115 Left Handle Half | (1) |
| | 4 | 06-55-1050 10-24 Hex Nut | (5) |
| ★ | 5 | 05-78-0305 Switch Screw T-15 | (4) |
| ★ | 6 | 23-66-1805 Switch | (1) |
| | 7 | 06-82-7409 8-16 x 1/2" Pan Hd. Plastite T-20 | (1) |
| | 8 | 06-82-2568 10-24 x 7/8" Pan Hd. Slit. T-25 | (3) |
| ★ | 9 | 31-44-1710 Right Handle Half | (1) |
| | 10 | 06-82-2598 10-24 x 2-3/4" Pan Hd. Slit. T-25 | (2) |
| | 11 | 42-38-0190 Bumper | (1) |
| | 12 | 06-82-7375 8-16 x 2-1/2" Taptite T-20 | (2) |
| | 13 | 40-50-7770 Brush Holder Spring | (2) |
| | 14 | 22-22-1325 Brush Holder Assembly | (2) |
| | 15 | 22-18-0680 Carbon Brush Assembly | (2) |
| | 16 | 23-44-0210 Brush Retaining Screw | (2) |
| ★ | 17 | 12-20-0160 Service Nameplate Kit | (1) |
| | 18 | 22-84-0710 Fan | (1) |
| ★ | 19 | 45-04-0720 Shoulder Screw | (2) |
| | 20 | 31-70-0125 Tool Rest | (1) |
| ★ | 21 | 31-50-0541 Motor Housing | (1) |
| | 22 | 02-04-0845 Ball Bearing | (1) |
| | 23 | 18-50-0090 120 Volt Field | (1) |
| | 24 | 22-20-0660 Brush Tube | (2) |
| | 25 | 16-50-0130 120 Volt Armature | (1) |
| ★ | 27 | 02-04-1229 Ball Bearing | (1) |
| | 28 | 28-28-1565 Diaphragm | (1) |
| | 29 | 32-02-3020 Armature Gear | (1) |

| FIG. | PART NO. | DESCRIPTION OF PART | NO. REQ. |
|------|----------|---|----------|
| | 30 | 02-04-0910 Ball Bearing | (1) |
| | 31 | 32-75-3030 Spindle Gear | (1) |
| | 32 | 28-50-6190 Spindle Housing | (1) |
| | 33 | 06-82-7407 10-14 x 1-9/16" Pan Hd. T-20 | (4) |
| | 34 | 38-50-5320 Spindle Shaft | (1) |
| ★ | 35 | 02-04-1229 Ball Bearing | (1) |
| | 36 | 34-80-2600 Internal Retaining Ring | (1) |
| | 37 | 06-42-0400 Woodruff Key | (1) |
| | 38 | 43-34-0390 Collet Flange | (1) |
| | 39 | 48-68-0040 1/4" Collet Body | (1) |
| | 40 | 48-66-0975 1/4" Collet | (1) |
| | 41 | 48-68-0030 1/4" Collet Nut | (1) |
| | | 22-56-0456 Terminal Block | (1) |
| | | 49-96-4040 1/2" Open End Wrench | (1) |
| | | 49-96-4090 11/16" Open End Wrench | (1) |
| | | 49-96-4075 1" Open End Wrench | (1) |

FIG. LUBRICATION
32 3/4 Oz. Type "D" Grease, No. 49-08-4110.



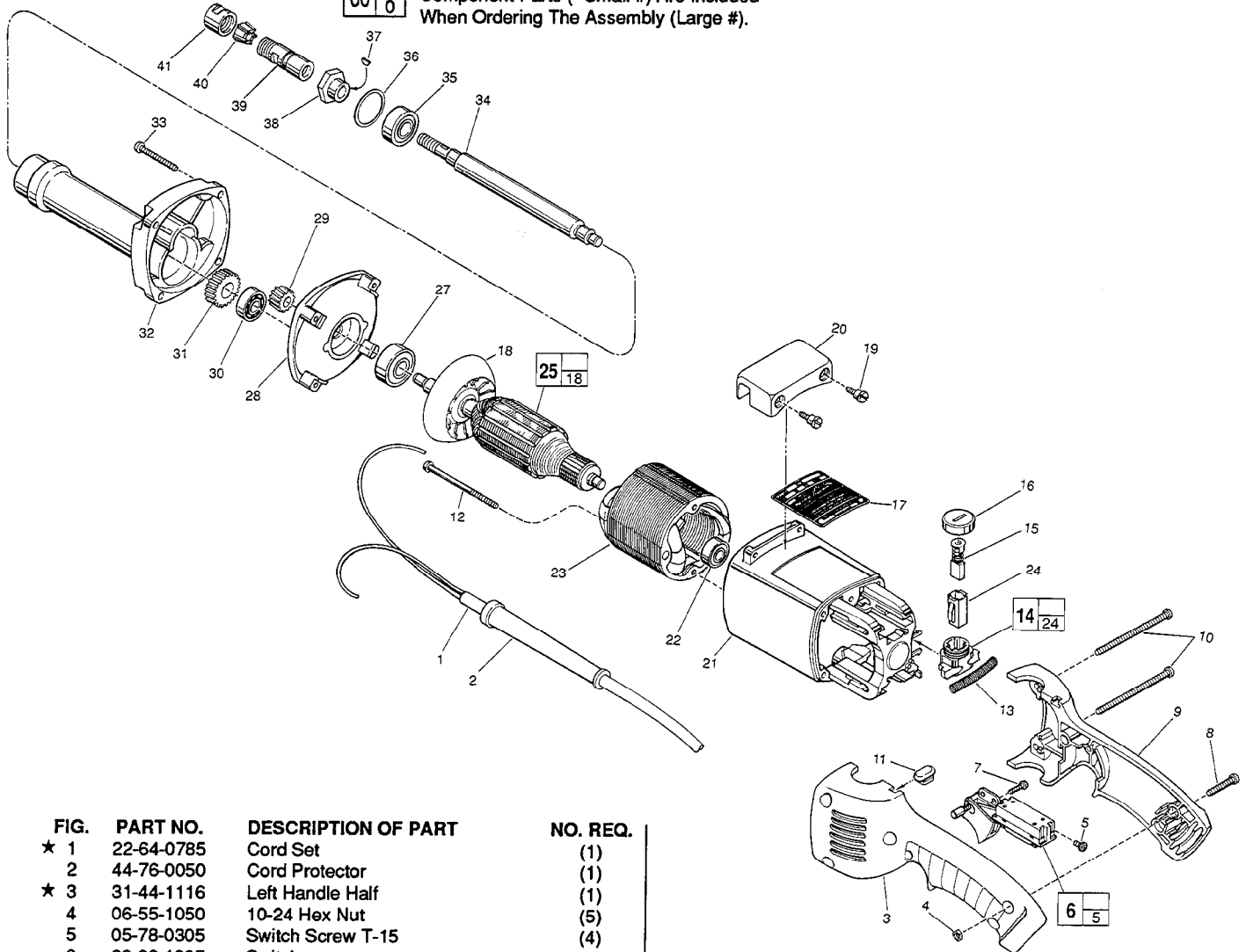
SERVICE PARTS LIST

**BULLETIN NO.
54-22-1043**

| SPECIFY CATALOG NO. AND SERIAL NO. WHEN ORDERING PARTS | | REVISED BULLETIN | DATE |
|--|-------------|---------------------------|---------|
| 2" DIE GRINDER | | 58-01-1042 | Aug.'93 |
| CATALOG NO. | 5196 | WIRING INSTRUCTION | |
| STARTING SERIAL NO. | 675B | 58-01-0301 | |



EXAMPLE:
Component Parts (Small #) Are Included
When Ordering The Assembly (Large #).



| FIG. | PART NO. | DESCRIPTION OF PART | NO. REQ. |
|------|------------|-----------------------------------|----------|
| ★ 1 | 22-64-0785 | Cord Set | (1) |
| 2 | 44-76-0050 | Cord Protector | (1) |
| ★ 3 | 31-44-1116 | Left Handle Half | (1) |
| 4 | 06-55-1050 | 10-24 Hex Nut | (5) |
| 5 | 05-78-0305 | Switch Screw T-15 | (4) |
| 6 | 23-66-1805 | Switch | (1) |
| 7 | 06-82-7409 | 8-16 x 1/2" Pan Hd. Plastite T-20 | (1) |
| 8 | 06-82-2568 | 10-24 x 7/8" Pan Hd. Slit. T-25 | (3) |
| ★ 9 | 31-44-1711 | Right Handle Half | (1) |
| 10 | 06-82-2598 | 10-24 x 2-3/4" Pan Hd. Slit. T-25 | (2) |
| 11 | 42-38-0190 | Bumper | (1) |
| 12 | 06-82-7375 | 8-16 x 2-1/2" Taptite T-20 | (2) |
| 13 | 40-50-7770 | Brush Holder Spring | (2) |
| 14 | 22-22-1325 | Brush Holder Assembly | (2) |
| 15 | 22-18-0680 | Carbon Brush Assembly | (2) |
| 16 | 23-44-0210 | Brush Retaining Screw | (2) |
| ★ 17 | 12-20-0211 | Service Nameplate Kit | (1) |
| 18 | 22-84-0710 | Fan | (1) |
| 19 | 45-04-0720 | Shoulder Screw | (2) |
| 20 | 31-70-0125 | Tool Rest | (1) |
| ★ 21 | 31-50-0555 | Motor Housing | (1) |
| 22 | 02-04-0845 | Ball Bearing | (1) |
| 23 | 18-50-0090 | 120 Volt Field | (1) |
| 24 | 22-20-0660 | Brush Tube | (2) |
| 25 | 16-50-0130 | 120 Volt Armature | (1) |
| 27 | 02-04-1229 | Ball Bearing | (1) |
| 28 | 28-28-1565 | Diaphragm | (1) |
| 29 | 32-02-3020 | Armature Gear | (1) |

| FIG. | PART NO. | DESCRIPTION OF PART | NO. REQ. |
|------|------------|------------------------------|----------|
| 30 | 02-04-0910 | Ball Bearing | (1) |
| 31 | 32-75-3030 | Spindle Gear | (1) |
| 32 | 28-50-6190 | Spindle Housing | (1) |
| 33 | 06-82-7407 | 10-14 x 1-9/16" Pan Hd. T-20 | (4) |
| 34 | 38-50-5320 | Spindle Shaft | (1) |
| 35 | 02-04-1229 | Ball Bearing | (1) |
| 36 | 34-80-2600 | Internal Retaining Ring | (1) |
| 37 | 06-42-0400 | Woodruff Key | (1) |
| 38 | 43-34-0390 | Collet Flange | (1) |
| 39 | 48-68-0040 | 1/4" Collet Body | (1) |
| 40 | 48-66-0975 | 1/4" Collet | (1) |
| 41 | 48-68-0030 | 1/4" Collet Nut | (1) |
| | 49-96-4040 | 1/2" Open End Wrench | (1) |
| | 49-96-4090 | 11/16" Open End Wrench | (1) |
| | 49-96-4075 | 1" Open End Wrench | (1) |

FIG. LUBRICATION
32 3/4 Oz. Type "D" Grease, No. 49-08-4110.



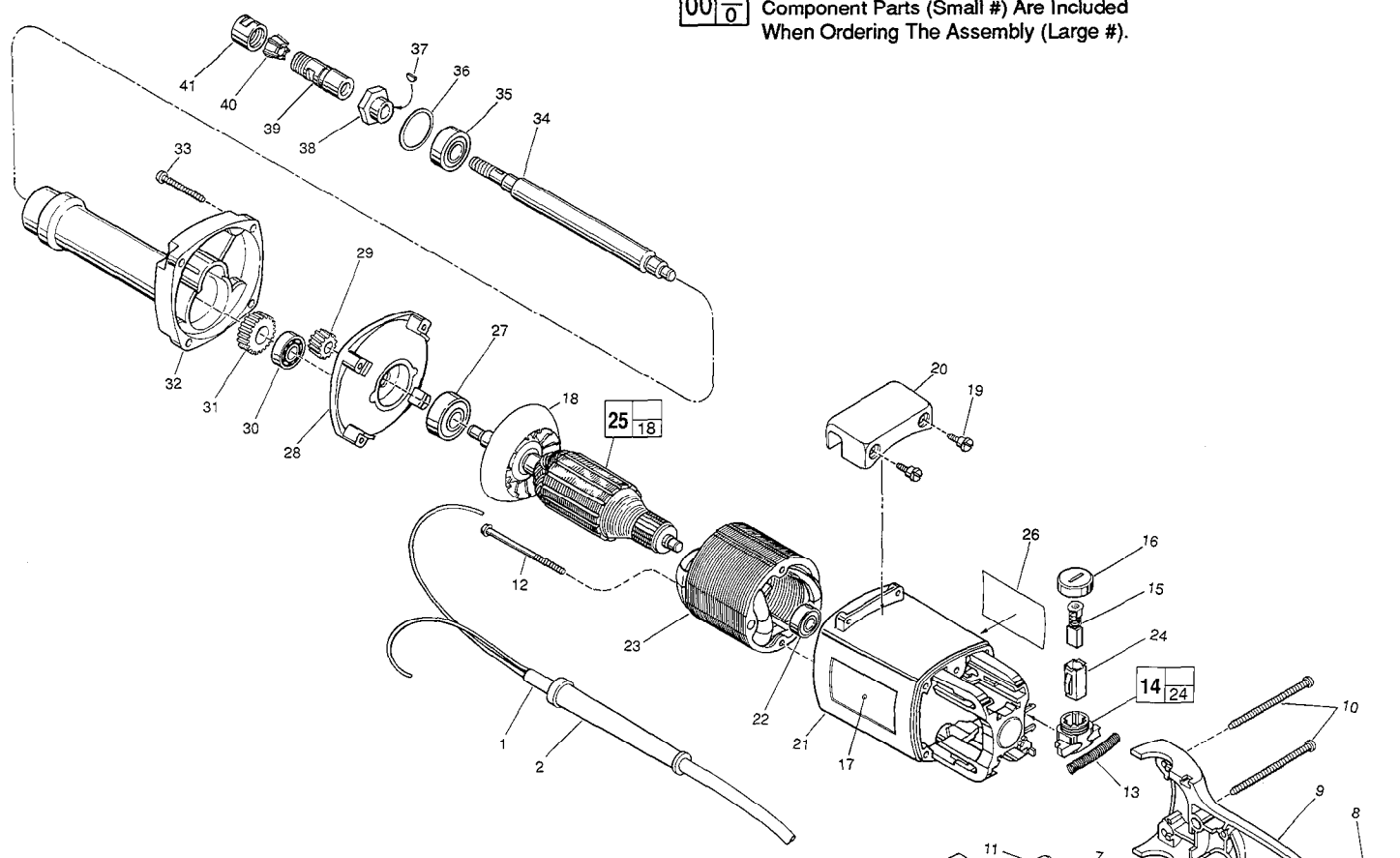
SERVICE PARTS LIST

BULLETIN NO.
54-22-1044

| | | | |
|--|------|--------------------|---------|
| SPECIFY CATALOG NO. AND SERIAL NO. WHEN ORDERING PARTS | | REVISED BULLETIN | DATE |
| 2" DIE GRINDER | | 54-22-1043 | May '97 |
| CATALOG NO. | 5196 | WIRING INSTRUCTION | |
| STARTING SERIAL NO. | 675C | 58-01-0301 | |

00 0

EXAMPLE:
Component Parts (Small #) Are Included
When Ordering The Assembly (Large #).



| FIG. | PART NO. | DESCRIPTION OF PART | NO. REQ. |
|------|------------|-----------------------------------|----------|
| 1 | 22-64-0785 | Cord Set | (1) |
| 2 | 44-76-0050 | Cord Protector | (1) |
| 3 | 31-44-1116 | Left Handle Half | (1) |
| 4 | 06-55-1050 | 10-24 Hex Nut | (5) |
| 5 | 05-78-0305 | Switch Screw T-15 | (4) |
| 6 | 23-66-1805 | Switch | (1) |
| 7 | 06-82-7409 | 8-16 x 1/2" Pan Hd. Plastite T-20 | (1) |
| 8 | 06-82-2568 | 10-24 x 7/8" Pan Hd. Sit. T-25 | (3) |
| 9 | 31-44-1711 | Right Handle Half | (1) |
| 10 | 06-82-2598 | 10-24 x 2-3/4" Pan Hd. Sit. T-25 | (2) |
| 11 | 42-38-0190 | Bumper | (1) |
| 12 | 06-82-7375 | 8-16 x 2-1/2" Taptite T-20 | (2) |
| 13 | 40-50-7770 | Brush Holder Spring | (2) |
| 14 | 22-22-1325 | Brush Holder Assembly | (2) |
| 15 | 22-18-0680 | Carbon Brush Assembly | (2) |
| 16 | 23-44-0210 | Brush Retaining Screw | (2) |
| ★ 17 | 12-20-5200 | Service Nameplate Kit | (1) |
| 18 | 22-84-0710 | Fan | (1) |
| 19 | 45-04-0720 | Shoulder Screw | (2) |
| 20 | 31-70-0125 | Tool Rest | (1) |
| ★ 21 | 31-50-0548 | Motor Housing | (1) |
| 22 | 02-04-0845 | Ball Bearing | (1) |
| 23 | 18-50-0090 | Field | (1) |
| 24 | 22-20-0660 | Brush Tube | (2) |
| 25 | 16-50-0130 | Armature | (1) |
| ★ 26 | 10-98-1815 | Warning Label | (1) |
| 27 | 02-04-1229 | Ball Bearing | (1) |
| 28 | 28-28-1565 | Diaphragm | (1) |
| 29 | 32-02-3020 | Armature Gear | (1) |
| 30 | 02-04-0910 | Ball Bearing | (1) |

| FIG. | PART NO. | DESCRIPTION OF PART | NO. REQ. |
|------|------------|------------------------------|----------|
| 31 | 32-75-3030 | Spindle Gear | (1) |
| 32 | 28-50-6190 | Spindle Housing | (1) |
| 33 | 06-82-7407 | 10-14 x 1-9/16" Pan Hd. T-20 | (4) |
| 34 | 38-50-5320 | Spindle Shaft | (1) |
| 35 | 02-04-1229 | Ball Bearing | (1) |
| 36 | 34-80-2600 | Internal Retaining Ring | (1) |
| 37 | 06-42-0400 | Woodruff Key | (1) |
| 38 | 43-34-0390 | Collet Flange | (1) |
| 39 | 48-68-0040 | 1/4" Collet Body | (1) |
| 40 | 48-66-0975 | 1/4" Collet | (1) |
| ★ 41 | 48-68-0031 | 1/4" Collet Nut | (1) |
| | 49-96-4040 | 1/2" Open End Wrench | (1) |
| | 49-96-4090 | 11/16" Open End Wrench | (1) |
| | 49-96-4075 | 1" Open End Wrench | (1) |

FIG. LUBRICATION
32 3/4 Oz. Type "D" Grease, No. 49-08-4110.



SERVICE PARTS LIST

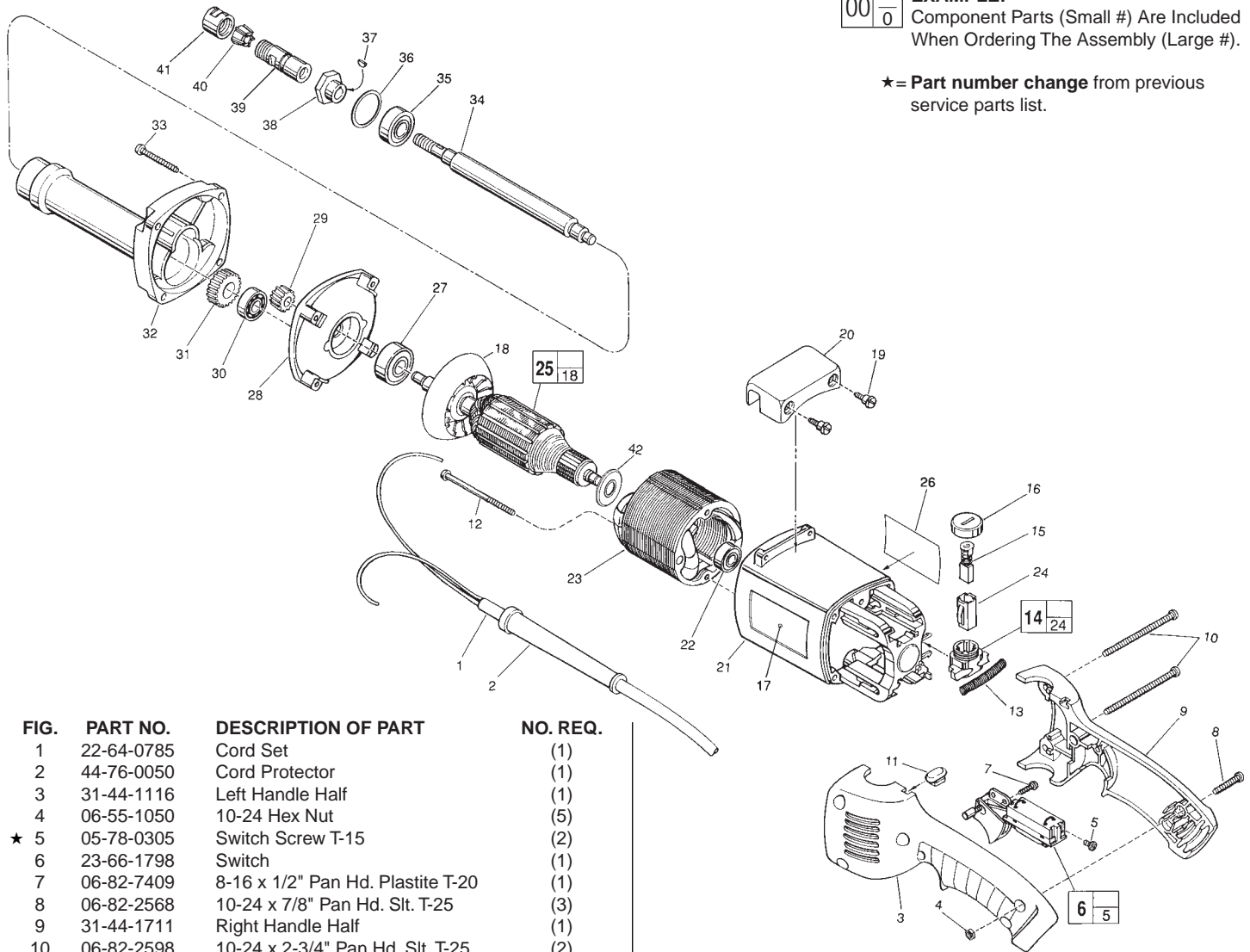
BULLETIN NO.
54-22-1045

| | | | |
|--|------|--------------------|-----------|
| SPECIFY CATALOG NO. AND SERIAL NO. WHEN ORDERING PARTS | | REVISED BULLETIN | DATE |
| 2" DIE GRINDER | | 54-22-1044 | June 2006 |
| CATALOG NO. | 5196 | WIRING INSTRUCTION | |
| STARTING SERIAL NO. | 675D | 58-01-0313 | |

00
0

EXAMPLE:
Component Parts (Small #) Are Included
When Ordering The Assembly (Large #).

★ = Part number change from previous
service parts list.



| FIG. | PART NO. | DESCRIPTION OF PART | NO. REQ. |
|------|----------|--|----------|
| | 1 | 22-64-0785 Cord Set | (1) |
| | 2 | 44-76-0050 Cord Protector | (1) |
| | 3 | 31-44-1116 Left Handle Half | (1) |
| | 4 | 06-55-1050 10-24 Hex Nut | (5) |
| ★ | 5 | 05-78-0305 Switch Screw T-15 | (2) |
| | 6 | 23-66-1798 Switch | (1) |
| | 7 | 06-82-7409 8-16 x 1/2" Pan Hd. Plastite T-20 | (1) |
| | 8 | 06-82-2568 10-24 x 7/8" Pan Hd. Slit. T-25 | (3) |
| | 9 | 31-44-1711 Right Handle Half | (1) |
| | 10 | 06-82-2598 10-24 x 2-3/4" Pan Hd. Slit. T-25 | (2) |
| | 11 | 42-38-0190 Bumper | (1) |
| | 12 | 06-82-7375 8-16 x 2-1/2" Taptite T-20 | (2) |
| | 13 | 40-50-7770 Brush Holder Spring | (2) |
| | 14 | 22-22-1325 Brush Holder Assembly | (2) |
| | 15 | 22-18-0680 Carbon Brush Assembly | (2) |
| | 16 | 23-44-0210 Brush Retaining Screw | (2) |
| | 17 | 12-20-5200 Service Nameplate Kit | (1) |
| | 18 | 22-84-0710 Fan | (1) |
| | 19 | 45-04-0720 Shoulder Screw | (2) |
| | 20 | 31-70-0125 Tool Rest | (1) |
| | 21 | 31-50-0548 Motor Housing | (1) |
| | 22 | 02-04-0845 Ball Bearing | (1) |
| | 23 | 18-50-0090 Field | (1) |
| | 24 | 22-20-0660 Brush Tube | (2) |
| | 25 | 16-50-1130 Armature | (1) |
| | 26 | 10-98-1815 Warning Label | (1) |
| ★ | 27 | 02-04-1860 Ball Bearing | (1) |
| | 28 | 28-28-1565 Diaphragm | (1) |
| | 29 | 32-02-3020 Armature Gear | (1) |
| | 30 | 02-04-0910 Ball Bearing | (1) |
| | 31 | 32-75-3030 Spindle Gear | (1) |
| | 32 | 28-50-6190 Spindle Housing | (1) |
| | 33 | 06-82-7407 10-14 x 1-9/16" Pan Hd. T-20 | (4) |
| | 34 | 38-50-5320 Spindle Shaft | (1) |
| ★ | 35 | 02-04-1860 Ball Bearing | (1) |

| FIG. | PART NO. | DESCRIPTION OF PART | NO. REQ. |
|------|----------|------------------------------------|----------|
| | 36 | 34-80-2600 Internal Retaining Ring | (1) |
| | 37 | 06-42-0400 Woodruff Key | (1) |
| | 38 | 43-34-0390 Collet Flange | (1) |
| | 39 | 48-68-0040 1/4" Collet Body | (1) |
| | 40 | 48-66-0975 1/4" Collet | (1) |
| | 41 | 48-68-0031 1/4" Collet Nut | (1) |
| ★ | 42 | 23-16-1700 Commutator Insulator | (1) |
| | | 49-96-4040 1/2" Open End Wrench | (1) |
| | | 49-96-4090 11/16" Open End Wrench | (1) |
| | | 49-96-4075 1" Open End Wrench | (1) |

FIG. LUBRICATION
★ 32 **Important!** Completely clean out old grease from the spindle housing and replace with 3/4 Oz. Type "Y" Grease, No. 49-08-5270.



SERVICE PARTS LIST

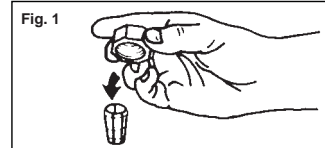
BULLETIN NO.
54-22-1046

| SPECIFY CATALOG NO. AND SERIAL NO. WHEN ORDERING PARTS | | REVISED BULLETIN | DATE |
|--|----------------------------|---|-----------|
| 2" DIE GRINDER | | 54-22-1045 | Apr. 2010 |
| CATALOG NO. | 5196 | WIRING INSTRUCTION 58-01-0314 | |
| | STARTING SERIAL NO. | | |
| | 675E | | |

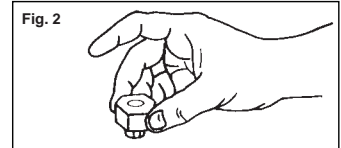
Collets

The collet must be attached to the collet nut before it is put into the collet shaft. Be sure that the size of the collet matches the size of the bit shank being used. If the wrong size bit shank is used, the collet may break. For attaching or detaching the collet nut to the collet, follow the illustrated instructions.

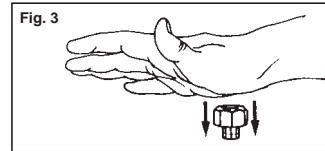
Attaching Collet to Collet Nut



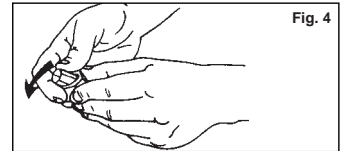
To assemble, place the narrow end of the collet on an even surface. Take the nut and place it over the collet (Fig. 1).



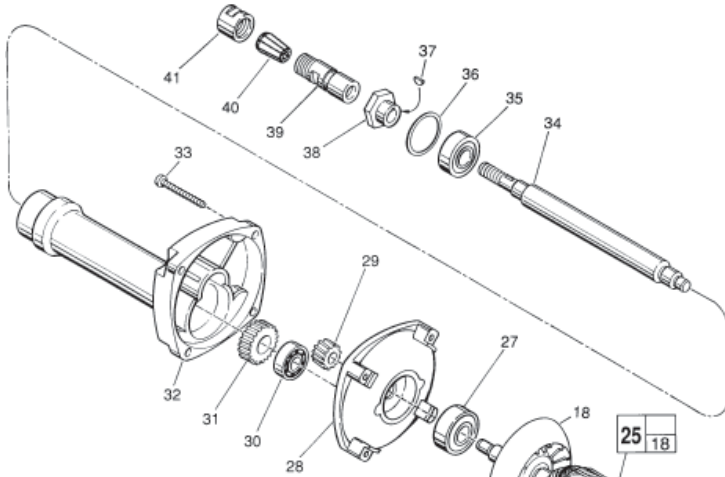
Position nut squarely over collet with the smaller opening of the nut facing up (Fig. 2).



Snap nut and collet together by firmly applying downward pressure into assembly with palm of hand (Fig. 3).

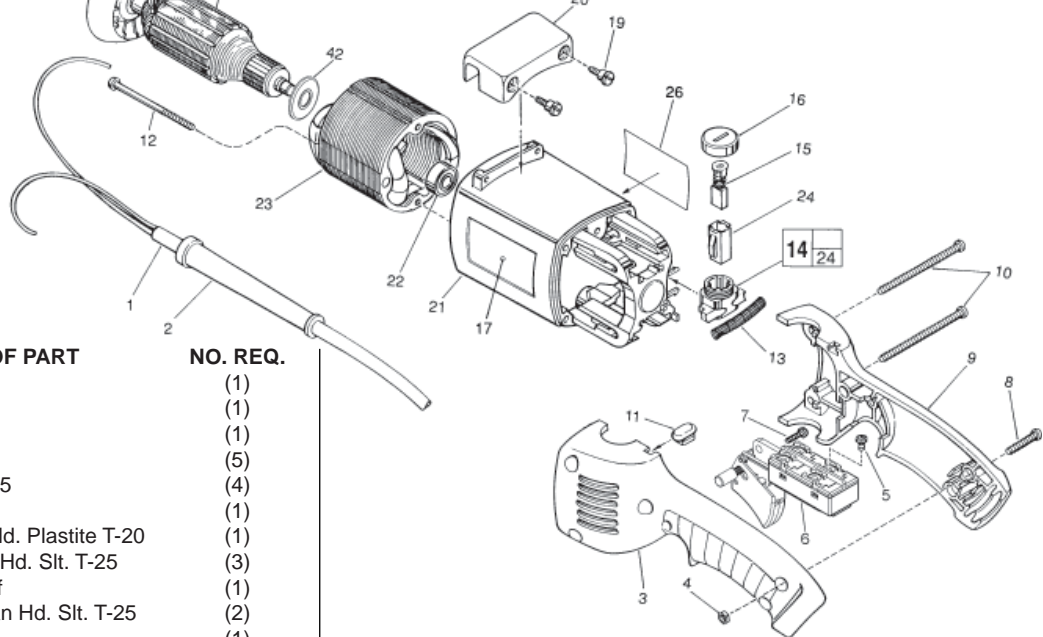


To remove collet from nut, hold nut firmly with one hand and press the collet to one side with the other hand (Fig. 4).



EXAMPLE:
Component Parts (Small #)
Are Included When Ordering
The Assembly (Large #).

★ = Part number change from previous service parts list.



| FIG. | PART NO. | DESCRIPTION OF PART | NO. REQ. |
|------|------------|-----------------------------------|----------|
| 1 | 22-64-0785 | Cord Set | (1) |
| 2 | 44-76-0050 | Cord Protector | (1) |
| ★ 3 | 31-44-1717 | Left Handle Half | (1) |
| 4 | 06-55-1050 | 10-24 Hex Nut | (5) |
| ★ 5 | 05-78-0305 | Switch Screw T-15 | (4) |
| ★ 6 | 23-66-1801 | Switch | (1) |
| 7 | 06-82-7409 | 8-16 x 1/2" Pan Hd. Plastite T-20 | (1) |
| 8 | 06-82-2568 | 10-24 x 7/8" Pan Hd. Slit. T-25 | (3) |
| ★ 9 | 31-44-1718 | Right Handle Half | (1) |
| 10 | 06-82-2598 | 10-24 x 2-3/4" Pan Hd. Slit. T-25 | (2) |
| 11 | 42-38-0190 | Bumper | (1) |
| 12 | 06-82-7375 | 8-16 x 2-1/2" Taptite T-20 | (2) |
| 13 | 40-50-7770 | Brush Holder Spring | (2) |
| 14 | 22-22-1325 | Brush Holder Assembly | (2) |
| 15 | 22-18-0680 | Carbon Brush Assembly | (2) |
| 16 | 23-44-0210 | Brush Retaining Screw | (2) |
| 17 | 12-20-5200 | Service Nameplate Kit | (1) |
| 18 | 22-84-0710 | Fan | (1) |
| 19 | 45-04-0720 | Shoulder Screw | (2) |
| 20 | 31-70-0125 | Tool Rest | (1) |
| 21 | 31-50-0548 | Motor Housing | (1) |
| 22 | 02-04-0845 | Ball Bearing | (1) |
| 23 | 18-50-0090 | Field | (1) |
| 24 | 22-20-0660 | Brush Tube | (2) |
| 25 | 16-50-1130 | Armature | (1) |
| ★ 26 | 10-98-1806 | Warning Label | (1) |
| 27 | 02-04-1860 | Ball Bearing | (1) |
| 28 | 28-28-1565 | Diaphragm | (1) |
| 29 | 32-02-3020 | Armature Gear | (1) |
| 30 | 02-04-0910 | Ball Bearing | (1) |
| 31 | 32-75-3030 | Spindle Gear | (1) |
| 32 | 28-50-6190 | Spindle Housing | (1) |
| 33 | 06-82-7407 | 10-14 x 1-9/16" Pan Hd. T-20 | (4) |

| FIG. | PART NO. | DESCRIPTION OF PART | NO. REQ. |
|------|------------|-------------------------|----------|
| 34 | 38-50-5320 | Spindle Shaft | (1) |
| 35 | 02-04-1860 | Ball Bearing | (1) |
| 36 | 34-80-2600 | Internal Retaining Ring | (1) |
| 37 | 06-42-0400 | Woodruff Key | (1) |
| 38 | 43-34-0390 | Collet Flange | (1) |
| 39 | 48-68-0040 | 1/4" Collet Body | (1) |
| 40 | 48-66-0975 | 1/4" Collet | (1) |
| 41 | 48-68-0031 | 1/4" Collet Nut | (1) |
| 42 | 23-16-1700 | Commutator Insulator | (1) |
| | 49-96-4040 | 1/2" Open End Wrench | (1) |
| | 49-96-4090 | 11/16" Open End Wrench | (1) |
| | 49-96-4075 | 1" Open End Wrench | (1) |

FIG. 32 LUBRICATION
Important! Completely clean out old grease from the spindle housing and replace with 3/4 Oz. Type "Y" Grease, No. 49-08-5270.



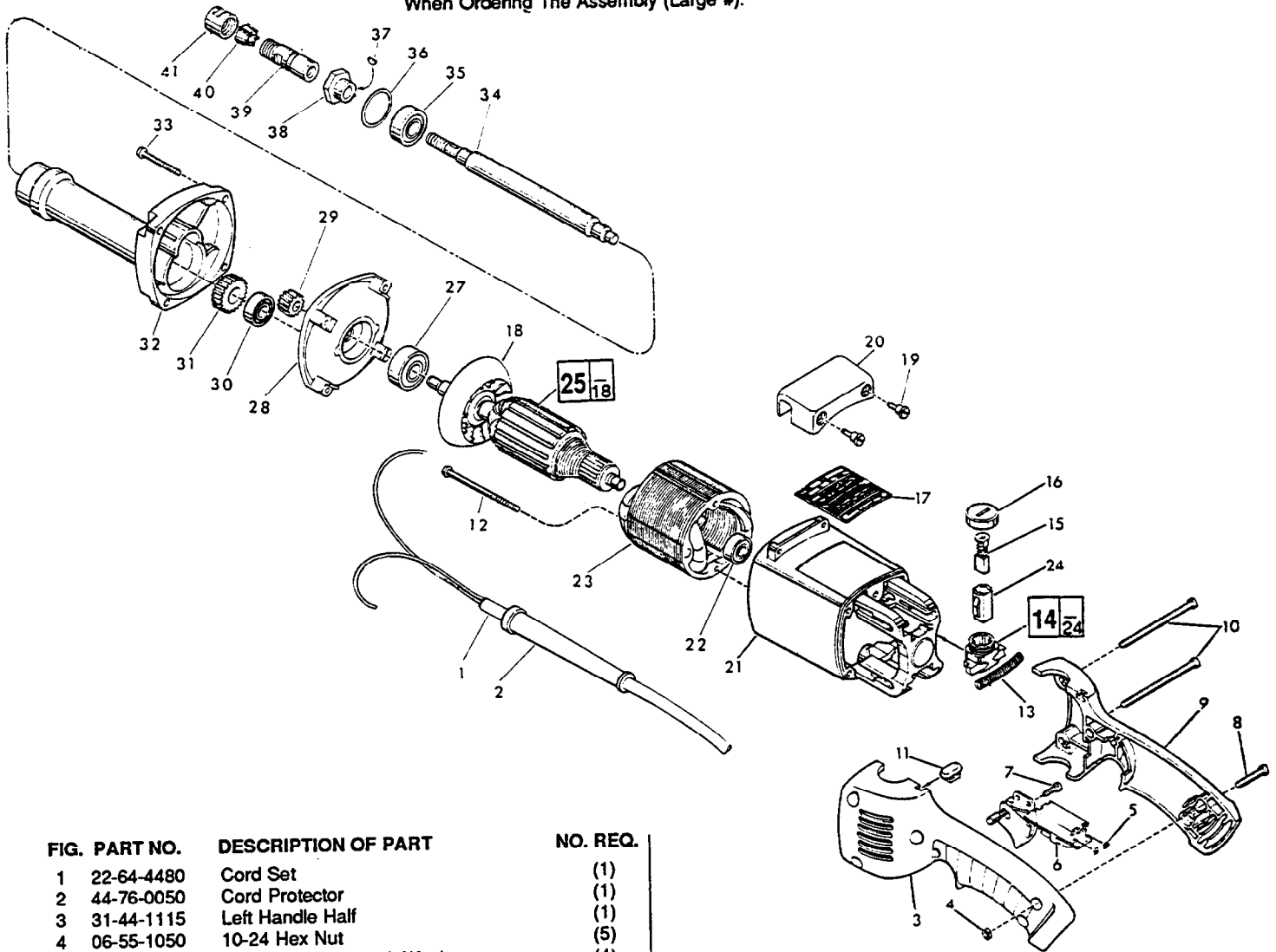
SERVICE PARTS LIST

BULLETIN NO.
55-22-1041

| | | | |
|--|------------------------------|----------------------------------|---------|
| SPECIFY CATALOG NO. AND SERIAL NO. WHEN ORDERING PARTS | | REVISED BULLETIN | DATE |
| 2" DIE GRINDER | | | May '91 |
| CATALOG NO. 5196-2 | STARTING SERIAL NO. 675-1001 | WIRING INSTRUCTION 58-01-0301 | |



EXAMPLE:
Component Parts (Sm#) Are Included
When Ordering The Assembly (Large #).



| FIG. | PART NO. | DESCRIPTION OF PART | NO. REQ. |
|------|------------|---------------------------------------|----------|
| 1 | 22-64-4480 | Cord Set | (1) |
| 2 | 44-76-0050 | Cord Protector | (1) |
| 3 | 31-44-1115 | Left Handle Half | (1) |
| 4 | 06-55-1050 | 10-24 Hex Nut | (5) |
| 5 | 06-97-1800 | No. 6 Int. Tooth Lock Washer | (4) |
| 6 | 23-66-0255 | Switch | (1) |
| 7 | 06-82-7409 | 8-16x1/2 Pan Hd. Plastite Torx Screw | (1) |
| 8 | 06-82-2568 | 10-24 x 7/8" Pan Hd. Slit. Torx Screw | (3) |
| 9 | 31-44-1110 | Right Handle Half | (1) |
| 10 | 06-82-2598 | 10-24x2-3/4" Pan Hd. Slit. Torx Screw | (2) |
| 11 | 42-38-0190 | Bumper | (1) |
| 12 | 06-82-7375 | 8-16 x 2-1/2" Torx Taptite Screw | (2) |
| 13 | 40-50-7770 | Brush Holder Spring | (2) |
| 14 | 22-22-1325 | Brush Holder Assembly | (2) |
| 15 | 22-18-0725 | Carbon Brush Assembly | (2) |
| 16 | 23-44-0210 | Brush Retaining Screw | (2) |
| 18 | 22-84-0710 | Fan | (1) |
| 19 | 45-64-0570 | Shoulder Screw | (2) |
| 20 | 31-70-0125 | Tool Rest | (1) |
| 21 | 31-50-0540 | Motor Housing | (1) |
| 22 | 02-04-0845 | Ball Bearing | (1) |
| 23 | 18-56-0990 | 240 Volt Field | (1) |
| 24 | 22-20-0660 | Brush Tube | (2) |
| 25 | 16-56-0130 | 240 Volt Armature | (1) |
| 27 | 02-04-1230 | Ball Bearing | (1) |
| 28 | 28-28-1565 | Diaphragm | (1) |
| 29 | 32-02-3020 | Armature Gear | (1) |

| FIG. | PART NO. | DESCRIPTION OF PART | NO. REQ. |
|------|------------|------------------------------------|----------|
| 30 | 02-04-0910 | Ball Bearing | (1) |
| 31 | 32-75-3030 | Spindle Gear | (1) |
| 32 | 28-50-6190 | Spindle Housing | (1) |
| 33 | 06-82-7407 | 10-14 x 1-9/16" Pan Hd. Torx Screw | (4) |
| 34 | 38-50-5320 | Spindle Shaft | (1) |
| 35 | 02-04-1230 | Ball Bearing | (1) |
| 36 | 34-80-2600 | Internal Retaining Ring | (1) |
| 37 | 06-42-0400 | Woodruff Key | (1) |
| 38 | 43-34-0390 | Collet Flange | (1) |
| 39 | 48-68-0040 | 1/4" Collet Body | (1) |
| 40 | 48-66-0975 | 1/4" Collet | (1) |
| 41 | 48-68-0030 | 1/4" Collet Nut | (1) |
| | 49-96-4040 | 1/2" Open End Wrench | (1) |
| | 49-96-4090 | 11/16" Open End Wrench | (1) |
| | 49-96-4075 | 1" Open End Wrench | (1) |

FIG. LUBRICATION

32 3/4 Oz. Type "D" Grease, No. 49-08-4110.



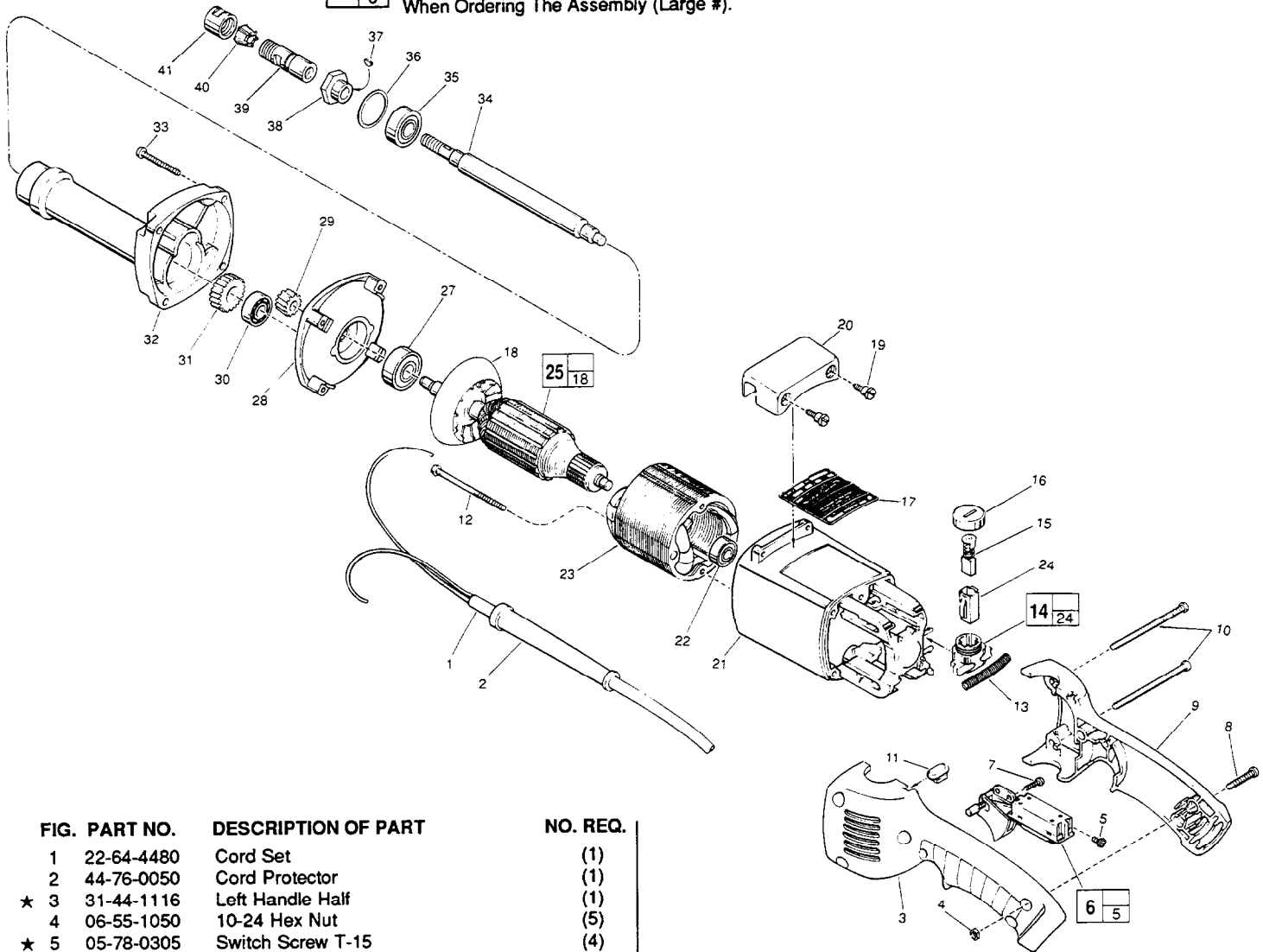
SERVICE PARTS LIST

**BULLETIN NO.
55-22-1042**

| | | | |
|--|---------------------|---|-----------------|
| SPECIFY CATALOG NO. AND SERIAL NO. WHEN ORDERING PARTS | | REVISED BULLETIN 55-22-1041 | DATE Aug.'93 |
| 2" DIE GRINDER | | | |
| CATALOG NO. 5196-2 | STARTING SERIAL NO. | 675A | |
| | | WIRING INSTRUCTION 58-01-0301 | |



EXAMPLE:
Component Parts (Small #) Are Included
When Ordering The Assembly (Large #).



| FIG. | PART NO. | DESCRIPTION OF PART | NO. REQ. |
|------|----------|--|----------|
| | 1 | 22-64-4480 Cord Set | (1) |
| | 2 | 44-76-0050 Cord Protector | (1) |
| ★ | 3 | 31-44-1116 Left Handle Half | (1) |
| | 4 | 06-55-1050 10-24 Hex Nut | (5) |
| ★ | 5 | 05-78-0305 Switch Screw T-15 | (4) |
| ★ | 6 | 23-66-1805 Switch | (1) |
| | 7 | 06-82-7409 8-16 x 1/2" Pan Hd. Plastite T-20 | (1) |
| | 8 | 06-82-2568 10-24 x 7/8" Pan Hd. Slit. T-25 | (3) |
| ★ | 9 | 31-44-1711 Right Handle Half | (1) |
| | 10 | 06-82-2598 10-24 x 2-3/4" Pan Hd. Slit. T-25 | (2) |
| | 11 | 42-38-0190 Bumper | (1) |
| | 12 | 06-82-7375 8-16 x 2-1/2" Taptite T-20 | (2) |
| | 13 | 40-50-7770 Brush Holder Spring | (2) |
| | 14 | 22-22-1325 Brush Holder Assembly | (2) |
| | 15 | 22-18-0725 Carbon Brush Assembly | (2) |
| | 16 | 23-44-0210 Brush Retaining Screw | (2) |
| ★ | 17 | 12-20-0211 Service Nameplate Kit | (1) |
| | 18 | 22-84-0710 Fan | (1) |
| ★ | 19 | 45-04-0720 Shoulder Screw | (2) |
| | 20 | 31-70-0125 Tool Rest | (1) |
| ★ | 21 | 31-50-0555 Motor Housing | (1) |
| | 22 | 02-04-0845 Ball Bearing | (1) |
| | 23 | 18-56-0090 240 Volt Field | (1) |
| | 24 | 22-20-0660 Brush Tube | (2) |
| | 25 | 16-56-0130 240 Volt Armature | (1) |
| ★ | 27 | 02-04-1229 Ball Bearing | (1) |
| | 28 | 28-28-1565 Diaphragm | (1) |
| | 29 | 32-02-3020 Armature Gear | (1) |

| FIG. | PART NO. | DESCRIPTION OF PART | NO. REQ. |
|------|----------|---|----------|
| | 30 | 02-04-0910 Ball Bearing | (1) |
| | 31 | 32-75-3030 Spindle Gear | (1) |
| | 32 | 28-50-6190 Spindle Housing | (1) |
| | 33 | 06-82-7407 10-14 x 1-9/16" Pan Hd. T-25 | (4) |
| | 34 | 38-50-5320 Spindle Shaft | (1) |
| ★ | 35 | 02-04-1229 Ball Bearing | (1) |
| | 36 | 34-80-2600 Internal Retaining Ring | (1) |
| | 37 | 06-42-0400 Woodruff Key | (1) |
| | 38 | 43-34-0390 Collet Flange | (1) |
| | 39 | 48-68-0040 1/4" Collet Body | (1) |
| | 40 | 48-66-0975 1/4" Collet | (1) |
| | 41 | 48-68-0030 1/4" Collet Nut | (1) |
| | | 49-96-4040 1/2" Open End Wrench | (1) |
| | | 49-96-4090 11/16" Open End Wrench | (1) |
| | | 49-96-4075 1" Open End Wrench | (1) |

FIG. LUBRICATION
32 3/4 Oz. Type "D" Grease, No. 49-08-4110.



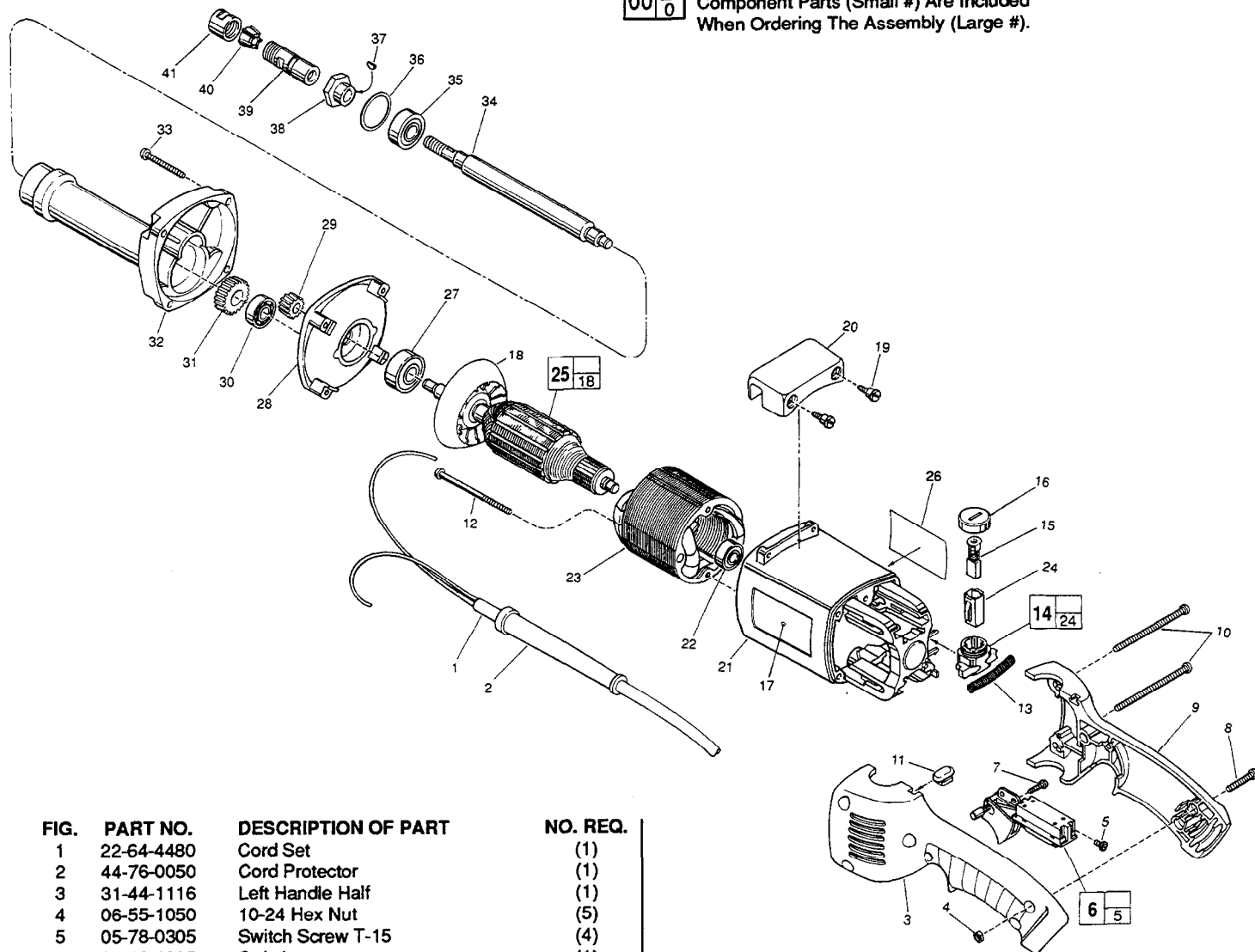
SERVICE PARTS LIST

BULLETIN NO.
55-22-1043

| | | | |
|--|--------|---|-----------------|
| SPECIFY CATALOG NO. AND SERIAL NO. WHEN ORDERING PARTS | | REVISED BULLETIN 55-22-1042 | DATE May '97 |
| 2" DIE GRINDER | | | |
| CATALOG NO. | 5196-2 | STARTING SERIAL NO. | 675B |
| | | WIRING INSTRUCTION 58-01-0301 | |

00
0

EXAMPLE:
Component Parts (Small #) Are Included
When Ordering The Assembly (Large #).



| FIG. | PART NO. | DESCRIPTION OF PART | NO. REQ. |
|------|------------|-----------------------------------|----------|
| 1 | 22-64-4480 | Cord Set | (1) |
| 2 | 44-76-0050 | Cord Protector | (1) |
| 3 | 31-44-1116 | Left Handle Half | (1) |
| 4 | 06-55-1050 | 10-24 Hex Nut | (5) |
| 5 | 05-78-0305 | Switch Screw T-15 | (4) |
| 6 | 23-66-1805 | Switch | (1) |
| 7 | 06-82-7409 | 8-16 x 1/2" Pan Hd. Plastite T-20 | (1) |
| 8 | 06-82-2568 | 10-24 x 7/8" Pan Hd. Slit. T-25 | (3) |
| 9 | 31-44-1711 | Right Handle Half | (1) |
| 10 | 06-82-2598 | 10-24 x 2-3/4" Pan Hd. Slit. T-25 | (2) |
| 11 | 42-38-0190 | Bumper | (1) |
| 12 | 06-82-7375 | 8-16 x 2-1/2" Taptite T-20 | (2) |
| 13 | 40-50-7770 | Brush Holder Spring | (2) |
| 14 | 22-22-1325 | Brush Holder Assembly | (2) |
| 15 | 22-18-0725 | Carbon Brush Assembly | (2) |
| 16 | 23-44-0210 | Brush Retaining Screw | (2) |
| ★ 17 | | Service Nameplate Kit | (1) |
| 18 | 22-84-0710 | Fan | (1) |
| 19 | 45-04-0720 | Shoulder Screw | (2) |
| 20 | 31-70-0125 | Tool Rest | (1) |
| ★ 21 | 31-50-0548 | Motor Housing | (1) |
| 22 | 02-04-0845 | Ball Bearing | (1) |
| 23 | 18-56-0090 | Field | (1) |
| 24 | 22-20-0660 | Brush Tube | (2) |
| ★ 25 | 16-56-1130 | Armature | (1) |
| ★ 26 | 10-98-1815 | Warning Label | (1) |
| 27 | 02-04-1229 | Ball Bearing | (1) |
| 28 | 28-28-1565 | Diaphragm | (1) |
| 29 | 32-02-3020 | Armature Gear | (1) |
| 30 | 02-04-0910 | Ball Bearing | (1) |

| FIG. | PART NO. | DESCRIPTION OF PART | NO. REQ. |
|------|------------|------------------------------|----------|
| 31 | 32-75-3030 | Spindle Gear | (1) |
| 32 | 28-50-6190 | Spindle Housing | (1) |
| 33 | 06-82-7407 | 10-14 x 1-9/16" Pan Hd. T-20 | (4) |
| 34 | 38-50-5320 | Spindle Shaft | (1) |
| 35 | 02-04-1229 | Ball Bearing | (1) |
| 36 | 34-80-2600 | Internal Retaining Ring | (1) |
| 37 | 06-42-0400 | Woodruff Key | (1) |
| 38 | 43-34-0390 | Collet Flange | (1) |
| 39 | 48-68-0040 | 1/4" Collet Body | (1) |
| 40 | 48-66-0975 | 1/4" Collet | (1) |
| ★ 41 | 48-68-0031 | 1/4" Collet Nut | (1) |
| | 49-96-4040 | 1/2" Open End Wrench | (1) |
| | 49-96-4090 | 11/16" Open End Wrench | (1) |
| | 49-96-4075 | 1" Open End Wrench | (1) |

FIG. LUBRICATION
32 3/4 Oz. Type "D" Grease, No. 49-08-4110.

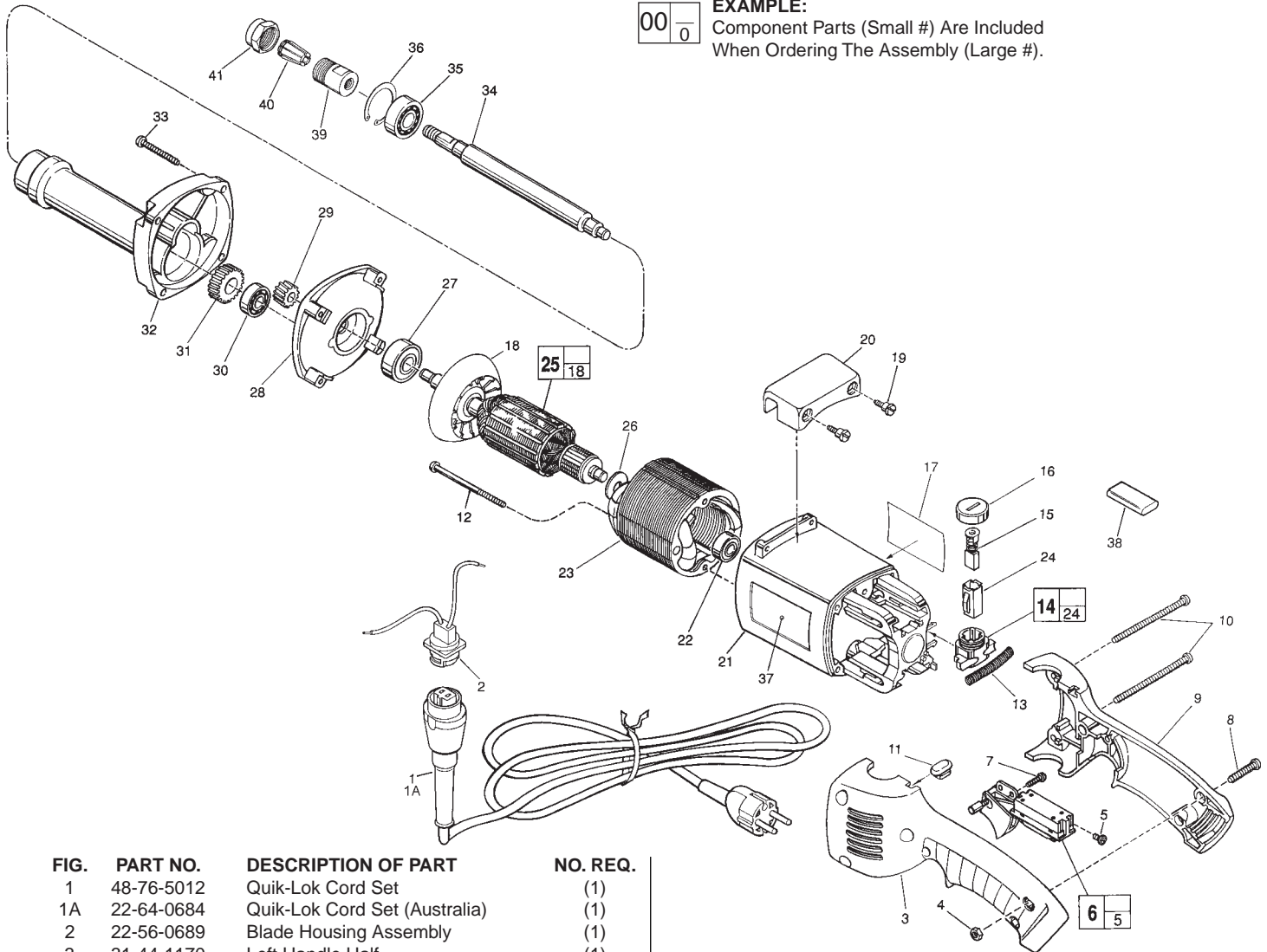


SERVICE PARTS LIST

BULLETIN NO.
55-22-1400

| | | | |
|--|----------------|---|-------------|
| SPECIFY CATALOG NO. AND SERIAL NO. WHEN ORDERING PARTS | | REVISED BULLETIN | DATE |
| 50mm DIE GRINDER | | | June 2006 |
| CATALOG NO. | 5196-50 | STARTING SERIAL NO. | 960A |
| | | WIRING INSTRUCTION 58-03-1750 | |

EXAMPLE:
Component Parts (Small #) Are Included
When Ordering The Assembly (Large #).



| FIG. | PART NO. | DESCRIPTION OF PART | NO. REQ. |
|------|------------|-----------------------------------|----------|
| 1 | 48-76-5012 | Quik-Lok Cord Set | (1) |
| 1A | 22-64-0684 | Quik-Lok Cord Set (Australia) | (1) |
| 2 | 22-56-0689 | Blade Housing Assembly | (1) |
| 3 | 31-44-1170 | Left Handle Half | (1) |
| 4 | 06-55-1050 | 10-24 Hex Nut | (5) |
| 5 | 05-78-0305 | Switch Screw T-15 | (4) |
| 6 | 23-66-1804 | Switch | (1) |
| 7 | 06-82-7409 | 8-16 x 1/2" Pan Hd. Plastite T-20 | (1) |
| 8 | 06-82-2568 | 10-24 x 7/8" Pan Hd. Slit. T-25 | (3) |
| 9 | 31-44-1175 | Right Handle Half | (1) |
| 10 | 06-82-2598 | 10-24 x 2-3/4" Pan Hd. Slit. T-25 | (2) |
| 11 | 42-38-0190 | Bumper | (1) |
| 12 | 06-82-7375 | 8-16 x 2-1/2" Taptite T-20 | (2) |
| 13 | 40-50-7770 | Brush Holder Spring | (2) |
| 14 | 22-22-1325 | Brush Holder Assembly | (2) |
| 15 | 22-18-0725 | Carbon Brush Assembly | (2) |
| 16 | 23-44-0210 | Brush Retaining Screw | (2) |
| 17 | 12-20-5196 | Service Nameplate Kit | (1) |
| 18 | 22-84-0710 | Fan | (1) |
| 19 | 45-04-0720 | Shoulder Screw | (2) |
| 20 | 31-70-0125 | Tool Rest | (1) |
| 21 | 31-50-0548 | Motor Housing | (1) |
| 22 | 02-04-0845 | Ball Bearing | (1) |
| 23 | 18-56-0091 | Field | (1) |
| 24 | 22-20-0660 | Brush Tube | (2) |
| 25 | 16-56-1140 | Armature | (1) |
| ★ 26 | 23-16-1700 | Commutator Insulator | (1) |
| 27 | 02-04-1515 | Ball Bearing | (1) |
| 28 | 28-28-1567 | Diaphragm | (1) |
| 29 | 32-02-3020 | Armature Gear | (1) |

| FIG. REQ. | PART NO. | DESCRIPTION OF PART | NO. |
|-----------|------------|------------------------------|-----|
| 30 | 02-04-0910 | Ball Bearing | (1) |
| 31 | 32-75-3090 | Spindle Gear | (1) |
| 32 | 28-50-6196 | Spindle Housing | (1) |
| 33 | 06-82-7407 | 10-14 x 1-9/16" Pan Hd. T-20 | (4) |
| 34 | 38-50-5321 | Spindle Shaft | (1) |
| 35 | 02-04-1745 | Ball Bearing | (1) |
| 36 | 34-80-2960 | Internal Retaining Ring | (1) |
| 37 | 10-15-5196 | Logo Label | (1) |
| 38 | 22-33-0535 | Suppressor | (1) |
| 39 | 48-68-0050 | Collet Body | (1) |
| 40 | 48-66-0976 | 8mm Collet | (1) |
| | 48-66-0978 | 6mm Collet | (1) |
| 41 | 44-40-0471 | Collet Nut | (1) |
| | 49-96-4050 | 9/16" Open End Wrench | (1) |
| | 49-96-4070 | 7/8" Open End Wrench | (1) |
| | 49-96-4100 | 1-1/4" Open End Wrench | (1) |

FIG. LUBRICATION
32 22 grams of Type "G" Grease, No. 49-08-4140.



SERVICE PARTS LIST

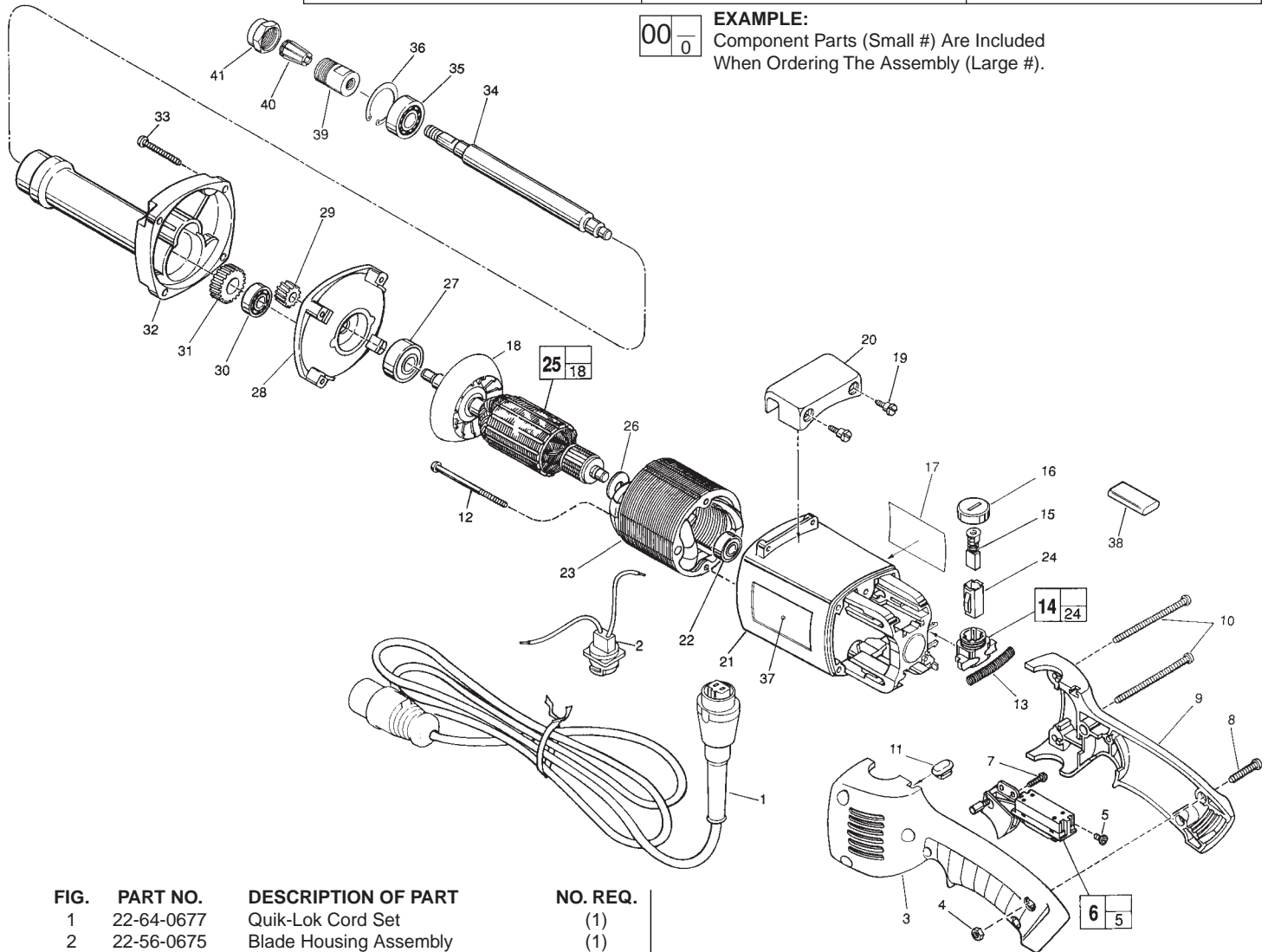
BULLETIN NO.
55-22-8000

| | | | |
|--|----------------|---|-------------|
| SPECIFY CATALOG NO. AND SERIAL NO. WHEN ORDERING PARTS | | REVISED BULLETIN | DATE |
| 50mm DIE GRINDER | | | June 2006 |
| CATALOG NO. | 5196-55 | STARTING SERIAL NO. | A40A |
| | | WIRING INSTRUCTION 58-03-1750 | |

00
0

EXAMPLE:

Component Parts (Small #) Are Included
When Ordering The Assembly (Large #).



| FIG. | PART NO. | DESCRIPTION OF PART | NO. REQ. |
|------|------------|-----------------------------------|----------|
| 1 | 22-64-0677 | Quik-Lok Cord Set | (1) |
| 2 | 22-56-0675 | Blade Housing Assembly | (1) |
| 3 | 31-44-1170 | Left Handle Half | (1) |
| 4 | 06-55-1050 | 10-24 Hex Nut | (5) |
| 5 | 05-78-0305 | Switch Screw T-15 | (4) |
| 6 | 23-66-1804 | Switch | (1) |
| 7 | 06-82-7409 | 8-16 x 1/2" Pan Hd. Plastite T-20 | (1) |
| 8 | 06-82-2568 | 10-24 x 7/8" Pan Hd. Slit. T-25 | (3) |
| 9 | 31-44-1175 | Right Handle Half | (1) |
| 10 | 06-82-2598 | 10-24 x 2-3/4" Pan Hd. Slit. T-25 | (2) |
| 11 | 42-38-0190 | Bumper | (1) |
| 12 | 06-82-7375 | 8-16 x 2-1/2" Taptite T-20 | (2) |
| 13 | 40-50-7770 | Brush Holder Spring | (1) |
| 14 | 22-22-1325 | Brush Holder Assembly | (2) |
| 15 | 22-18-0680 | Carbon Brush Assembly | (2) |
| 16 | 23-44-0210 | Brush Retaining Screw | (2) |
| 17 | 12-20-5196 | Service Nameplate Kit | (1) |
| 18 | 22-84-0710 | Fan | (1) |
| 19 | 45-04-0720 | Shoulder Screw | (2) |
| 20 | 31-70-0125 | Tool Rest | (1) |
| 21 | 31-50-0548 | Motor Housing | (1) |
| 22 | 02-04-0845 | Ball Bearing | (1) |
| 23 | 18-50-1400 | Field | (1) |
| 24 | 22-20-0660 | Brush Tube | (2) |
| 25 | 16-50-1400 | Armature | (1) |
| ★ 26 | 23-16-1700 | Commutator Insulator | (1) |
| 27 | 02-04-1515 | Ball Bearing | (1) |
| 28 | 28-28-1567 | Diaphragm | (1) |
| 29 | 32-02-3020 | Armature Gear | (1) |

| FIG. | PART NO. | DESCRIPTION OF PART | NO. REQ. |
|------|------------|------------------------------|----------|
| 30 | 02-04-0910 | Ball Bearing | (1) |
| 31 | 32-75-3090 | Spindle Gear | (1) |
| 32 | 28-50-6196 | Spindle Housing | (1) |
| 33 | 06-82-7407 | 10-14 x 1-9/16" Pan Hd. T-20 | (4) |
| 34 | 38-50-5321 | Spindle Shaft | (1) |
| 35 | 02-04-1745 | Ball Bearing | (1) |
| 36 | 34-80-2960 | Internal Retaining Ring | (1) |
| 37 | 10-15-5196 | Logo Label | (1) |
| 38 | 22-33-0535 | Suppressor | (1) |
| 39 | 48-68-0050 | Collet Body | (1) |
| 40 | 48-66-0976 | 8mm Collet | (1) |
| | 48-66-0978 | 6mm Collet | (1) |
| 41 | 44-40-0471 | Collet Nut | (1) |
| | 49-96-4050 | 9/16" Open End Wrench | (1) |
| | 49-96-4070 | 7/8" Open End Wrench | (1) |
| | 49-96-4100 | 1-1/4" Open End Wrench | (1) |

FIG. LUBRICATION

32 22 grams of Type "G" Grease, No. 49-08-4140.