



# SERVICE PARTS LIST

**BULLETIN NO.**  
**54-22-1020**

<b>SPECIFY CATALOG NO. AND SERIAL NO. WHEN ORDERING PARTS</b>		REVISED BULLETIN	DATE
<b>D. I. DIE GRINDER</b>			Oct. 2012
<b>CATALOG NO.</b>	<b>5192</b>	<b>STARTING SERIAL NO.</b>	<b>669-1001</b>
		<b>WIRING INSTRUCTION</b> <b>58-01-0308</b>	
<b>CAT. NO.</b>	<b>5192-7</b>	<b>START SER. NO.</b>	<b>669-01001</b>
		<b>BILINGUAL LABEL</b> 10-98-6115	

**EXAMPLE:**  

00	0
----	---

 Component Parts (Small #) Are Included When Ordering The Assembly (Large #).

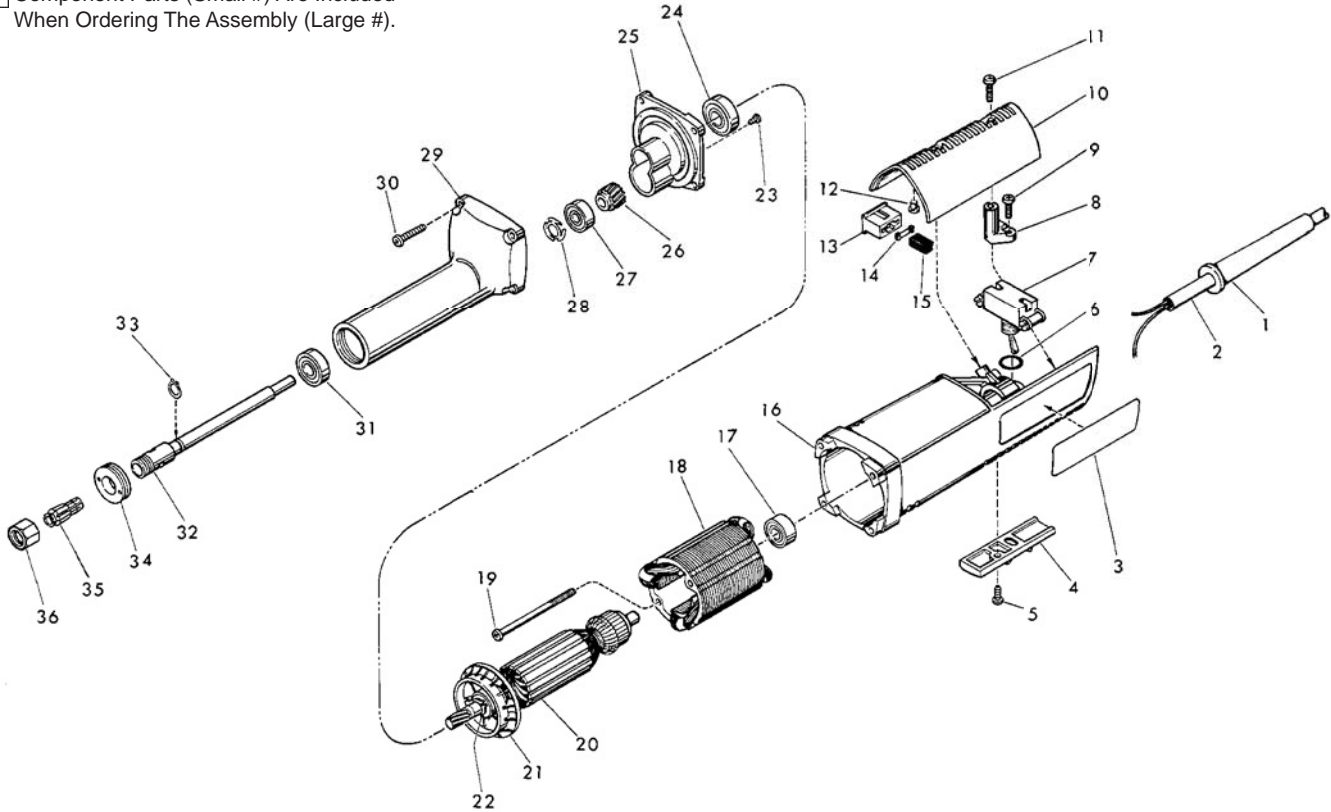


FIG.	PART NO.	DESCRIPTION OF PART	NO. REQ.
1	44-76-0110	Cord Protector	(1)
2	22-64-0215	Cord Set	(1)
3	12-65-0401	Service Nameplate	(1)
	12-65-0403	Service Nameplate - Canadian	(1)
4	31-55-0155	Trigger Cover	(1)
5	06-95-0205	8-16 x 1/2" Pan Hd. Plastite Screw	(1)
6	34-40-4015	O-Ring	(2)
7	23-66-1190	Switch	(1)
8	31-17-0120	Cord Clamp	(1)
9	06-95-0216	8-16 x 5/8" Plastite Screw	(2)
10	31-15-0140	Motor Housing Cover	(1)
	31-15-0290	Motor Housing Cover - Canadian	(1)
11	06-95-0216	8-16 x 5/8" Plastite Screw	(2)
12	42-38-0180	Rubber Bumper	(2)
13	22-20-0450	Brush Holder	(2)
14	23-52-0190	Brush Spring	(2)
15	22-16-0275	Carbon Brush	(2)
16	31-50-0235	Motor Housing	(1)
17	02-04-0845	Ball Bearing	(1)
18	18-07-0020	120 Volt Field	(1)
19	06-82-0218	8-16 x 2-1/2" Pan Hd. Plastite Screw	(2)

FIG.	PART NO.	DESCRIPTION OF PART	NO. REQ.
20	16-07-0025	120 Volt Armature	(1)
21	22-84-0680	Fan	(1)
22	34-60-2345	Ball Brg. Retaining Ring	(1)
23	06-95-0110	6-32 x 5/16" Pan Head Taptite Screw	(2)
24	02-04-1207	Ball Bearing	(1)
25	28-28-1540	Diaphragm	(1)
26	32-75-2880	Spindle Gear	(1)
27	02-04-0845	Ball Bearing	(1)
28	45-88-7550	Finger Washer	(1)
29	28-50-7720	Spindle Housing	(1)
30	06-95-0219	8-16 x 7/8" Pan Hd. Slit. Plastite Screw	(4)
31	02-04-1005	Ball Bearing	(1)
32	38-50-5210	Spindle Shaft	(1)
33	34-60-2340	Ball Bearing Retaining Ring	(1)
34	44-40-0490	Bearing Lock Nut	(1)
35	48-66-0975	1/4" Collet	(1)
36	44-40-0435	Collet Nut	(1)
37	49-96-4040	1/2" Open End Wrench (Not Shown)	(1)
38	49-96-4090	11/16" Open End Wrench (Not Shown)	(1)

**FIG. LUBRICATION**

29 1/4 Oz. Type "G" Grease, No. 49-08-4140.



# SERVICE PARTS LIST

**BULLETIN NO.**  
**54-22-1021**

SPECIFY CATALOG NO. AND SERIAL NO. WHEN ORDERING PARTS		REVISED BULLETIN	DATE
<b>D. I. DIE GRINDER</b>		54-22-1020	Oct. 2012
<b>CATALOG NO.</b>	<b>5192</b>	<b>WIRING INSTRUCTION</b>	
	<b>STARTING SERIAL NO.</b>	<b>58-01-0308</b>	
<b>CAT. NO.</b>	<b>5192-7</b>	<b>START SER. NO.</b>	<b>669-01006</b>
		<b>BILINGUAL LABEL</b>	<b>10-98-6115</b>

**EXAMPLE:**  

00	0
----	---

 Component Parts (Small #) Are Included When Ordering The Assembly (Large #).

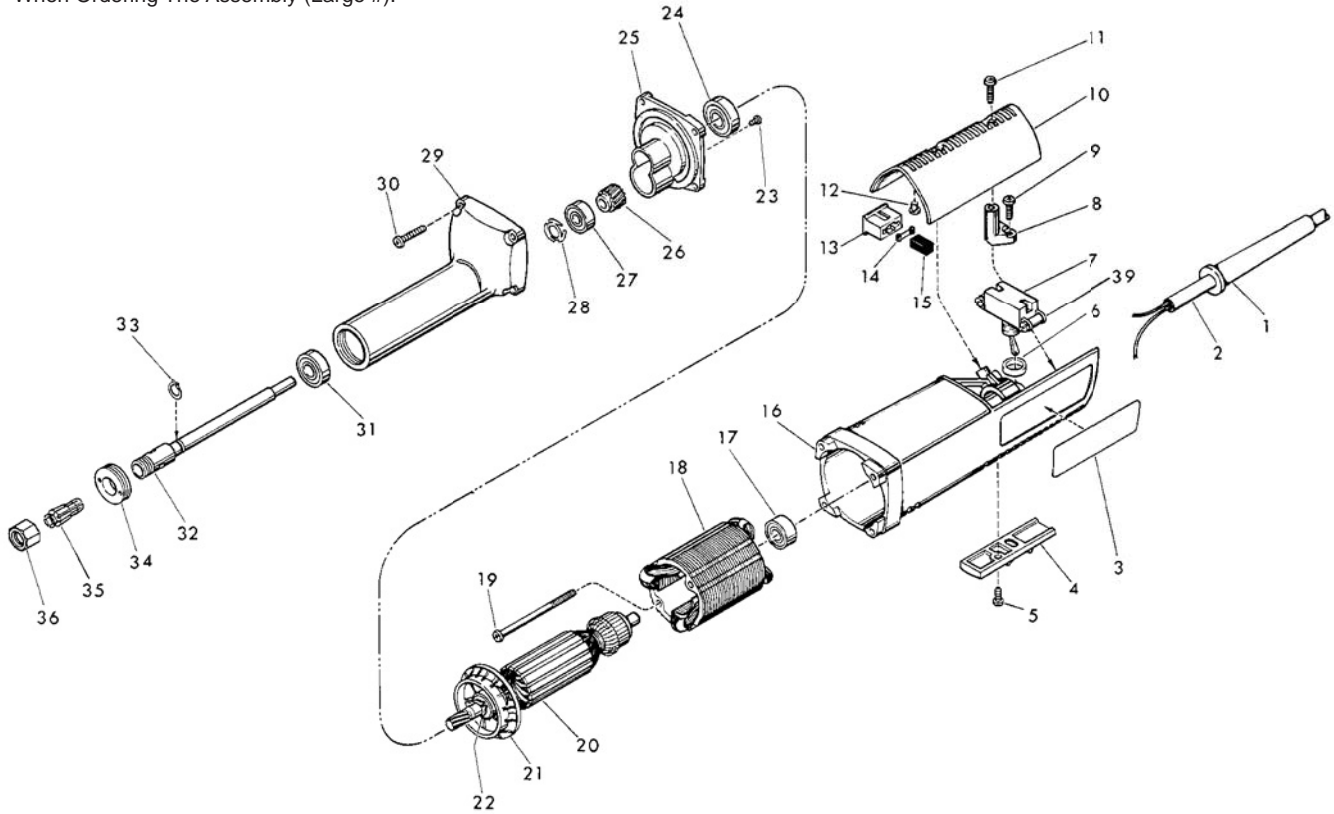


FIG.	PART NO.	DESCRIPTION OF PART	NO. REQ.
1	44-76-0110	Cord Protector	(1)
2	22-64-0215	Cord Set	(1)
3	12-65-0401	Service Nameplate	(1)
	12-65-0403	Service Nameplate - Canadian	(1)
4	31-55-0155	Trigger Cover	(1)
5	06-95-0205	8-16 x 1/2" Pan Hd. Plastite Screw	(1)
★ 6	44-90-4245	Rubber Ring	(1)
7	23-66-1190	Switch	(1)
8	31-17-0120	Cord Clamp	(1)
9	06-95-0216	8-16 x 5/8" Plastite Screw	(2)
10	31-15-0140	Motor Housing Cover	(1)
	31-15-0290	Motor Housing Cover - Canadian	(1)
11	06-95-0216	8-16 x 5/8" Plastite Screw	(2)
12	42-38-0180	Rubber Bumper	(2)
13	22-20-0450	Brush Holder	(2)
14	23-52-0190	Brush Spring	(2)
15	22-16-0275	Carbon Brush	(2)
★ 16	31-50-0420	Motor Housing	(1)
17	02-04-0845	Ball Bearing	(1)
18	18-07-0020	120 Volt Field	(1)
19	06-82-0218	8-16 x 2-1/2" Pan Hd. Plastite Screw	(2)

FIG.	PART NO.	DESCRIPTION OF PART	NO. REQ.
20	16-07-0025	120 Volt Armature	(1)
21	22-84-0680	Fan	(1)
22	34-60-2345	Ball Brg. Retaining Ring	(1)
23	06-95-0110	6-32 x 5/16" Pan Head Taptite Screw	(2)
24	02-04-1207	Ball Bearing	(1)
25	28-28-1540	Diaphragm	(1)
26	32-75-2880	Spindle Gear	(1)
27	02-04-0845	Ball Bearing	(1)
28	45-88-7550	Finger Washer	(1)
29	28-50-7720	Spindle Housing	(1)
30	06-95-0219	8-16 x 7/8" Pan Hd. Slit. Plastite Screw	(4)
31	02-04-1005	Ball Bearing	(1)
32	38-50-5210	Spindle Shaft	(1)
33	34-60-2340	Ball Bearing Retaining Ring	(1)
34	44-40-0490	Bearing Lock Nut	(1)
35	48-66-0975	1/4" Collet	(1)
36	48-68-0030	1/4" Collet Nut	(1)
37	49-96-4040	1/2" Open End Wrench (Not Shown)	(1)
38	49-96-4090	11/16" Open End Wrench (Not Shown)	(1)
39	06-95-0125	Switch Terminal Screw	(2)

**FIG. LUBRICATION**

29 1/4 Oz. Type "G" Grease, No. 49-08-4140.



# SERVICE PARTS LIST

**BULLETIN NO.**  
**54-22-1023**

SPECIFY CATALOG NO. AND SERIAL NO. WHEN ORDERING PARTS		REVISED BULLETIN	DATE
<b>D. I. DIE GRINDER</b>		54-22-1022	Oct. 2012
<b>CATALOG NO.</b>	<b>5192</b>	<b>WIRING INSTRUCTION</b>	
<b>STARTING SERIAL NO.</b>	<b>669-33651</b>	<b>58-01-0306</b>	

**EXAMPLE:**  

00	0
----	---

 Component Parts (Small #) Are Included When Ordering The Assembly (Large #).

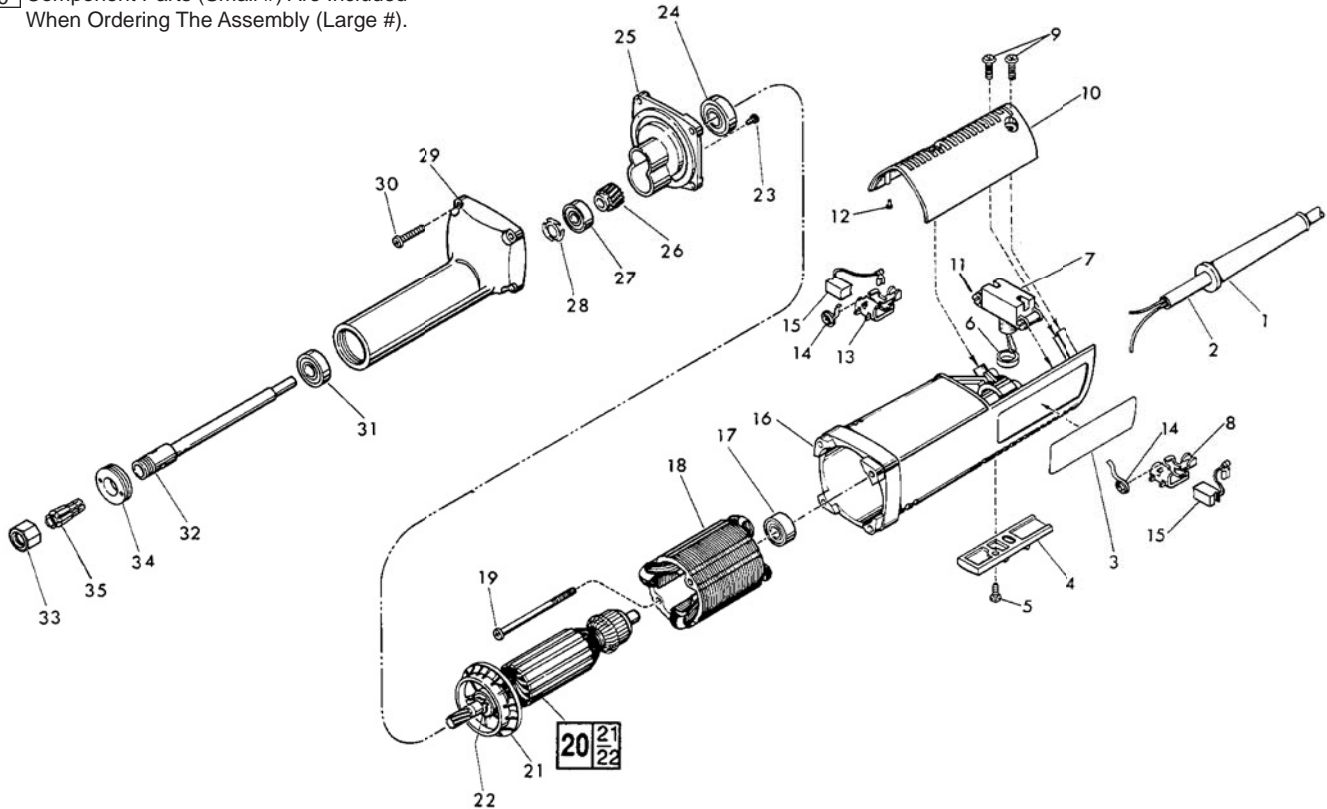


FIG.	PART NO.	DESCRIPTION OF PART	NO. REQ.
★ 1	44-76-0130	Cord Protector	(1)
2	22-64-0215	Cord Set	(1)
3	12-65-0404	Service Nameplate	(1)
4	31-55-0155	Trigger Cover	(1)
★ 5	06-82-7409	8-16 x 1/2" Pan Hd. T-20 Plastite Screw	(1)
6	44-90-4245	Rubber Ring	(1)
7	23-66-1190	Switch	(1)
★ 8	22-20-0691	Left Brush Holder	(1)
★ 9	06-82-7270	8-16 x 5/8" Pan Hd. T-20 Plastite Screw	(3)
★ 10	31-15-0142	Motor Housing Cover	(1)
11	06-95-0125	Switch Terminal Screw	(2)
★ 12	42-38-0181	Rubber Bumper	(2)
★ 13	22-20-0692	Right Brush Holder	(1)
14	23-52-0240	Brush Spring	(2)
15	22-18-0710	Carbon Brush	(2)
★ 16	31-50-0425	Motor Housing	(1)
17	02-04-0845	Ball Bearing	(1)
18	18-07-0100	120 Volt Field	(1)
★ 19	06-82-7375	8-16 x 2-1/2" Pan Hd. Plast. T-20 Screw	(2)

FIG.	PART NO.	DESCRIPTION OF PART	NO. REQ.
20	16-07-0100	120 Volt Armature	(1)
21	22-84-0680	Fan	(1)
★ 22	34-60-0920	Ball Brg. Retaining Ring	(1)
23	06-95-0110	6-32 x 5/16" Pan Head Taptite Screw	(2)
24	02-04-1207	Ball Bearing	(1)
25	28-28-1540	Diaphragm	(1)
26	32-75-2880	Spindle Gear	(1)
27	02-04-0845	Ball Bearing	(1)
28	45-88-7550	Finger Washer	(1)
29	28-50-7720	Spindle Housing	(1)
★ 30	06-82-7299	8-16 x 7/8" Pan Hd. Slit. Plast. T-20 Scr.	(4)
31	02-04-1005	Ball Bearing	(1)
32	38-50-5210	Spindle Shaft	(1)
33	48-68-0030	1/4" Collet Nut	(1)
34	44-40-0490	Bearing Lock Nut	(1)
35	48-66-0975	1/4" Collet	(1)
	49-96-4040	1/2" Open End Wrench (Not Shown)	(1)
	49-96-4090	11/16" Open End Wrench (Not Shown)	(1)

**FIG. LUBRICATION**

29 1/4 Oz. Type "G" Grease, No. 49-08-4140.



# SERVICE PARTS LIST

**BULLETIN NO.**  
**54-22-1024**

SPECIFY CATALOG NO. AND SERIAL NO. WHEN ORDERING PARTS		REVISED BULLETIN	DATE
<b>D. I. DIE GRINDER</b>		54-22-1023	Oct. 2012
<b>CATALOG NO.</b>	<b>5192</b>	<b>WIRING INSTRUCTION</b>	
<b>STARTING SERIAL NO.</b>	<b>669A</b>	<b>58-01-0306</b>	

**EXAMPLE:**  

00	0
----	---

 Component Parts (Small #) Are Included When Ordering The Assembly (Large #).

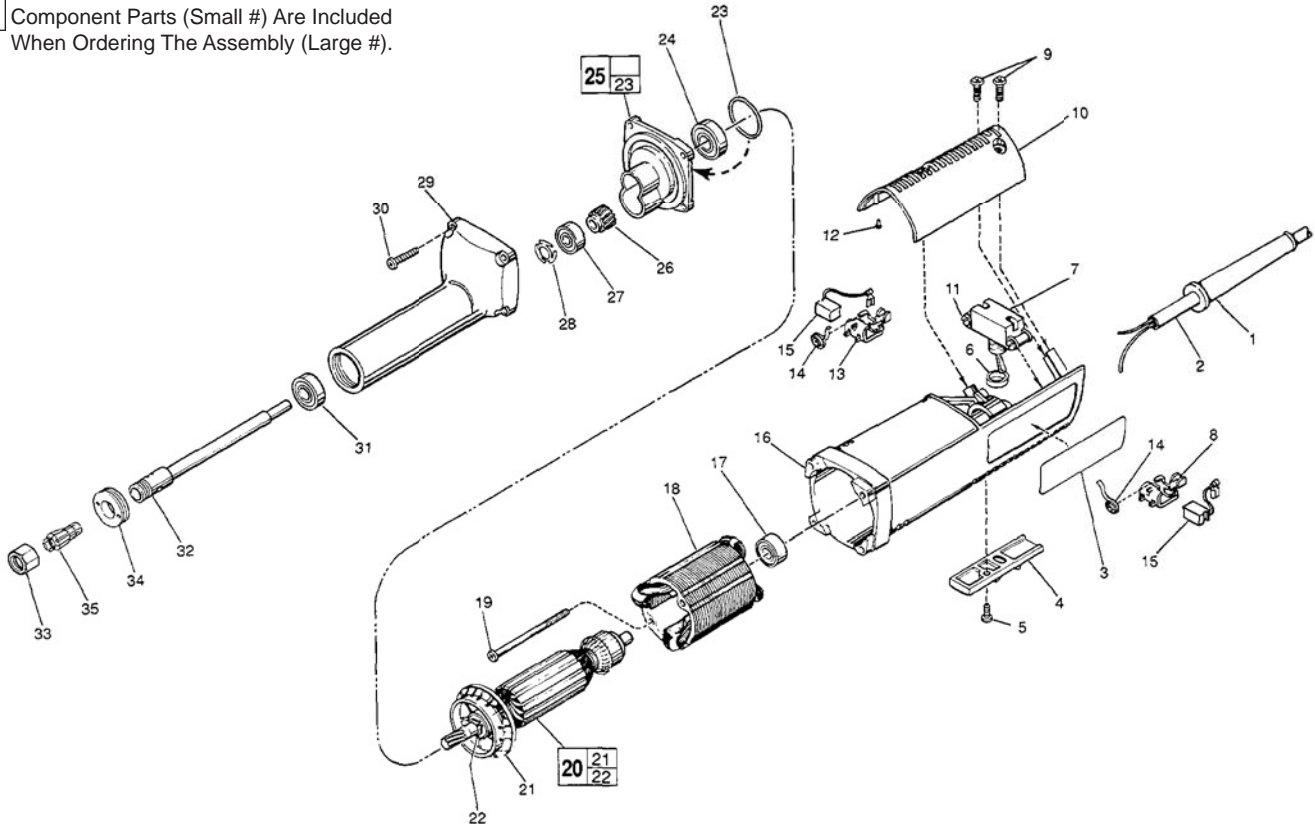


FIG.	PART NO.	DESCRIPTION OF PART	NO. REQ.
1	44-76-0130	Cord Protector	(1)
2	22-64-0215	Cord Set	(1)
★ 3	12-20-0465	Service Nameplate Kit	(1)
4	31-55-0155	Trigger Cover	(1)
5	06-82-7409	8-16 x 1/2" Pan Hd. T-20 Plastite Screw	(1)
6	44-90-4245	Rubber Ring	(1)
7	23-66-1190	Switch	(1)
8	22-20-0691	Left Brush Holder	(1)
9	06-82-7270	8-16 x 5/8" Pan Hd. T-20 Plastite Screw	(3)
10	31-15-0142	Motor Housing Cover	(1)
11	06-95-0125	Switch Terminal Screw	(2)
12	42-38-0181	Rubber Bumper	(2)
13	22-20-0692	Right Brush Holder	(1)
14	23-52-0240	Brush Spring	(2)
15	22-18-0710	Carbon Brush	(2)
16	31-50-0425	Motor Housing	(1)
17	02-04-0845	Ball Bearing	(1)
18	18-07-0100	120 Volt Field	(1)
19	06-82-7375	8-16 x 2-1/2" Pan Hd. Plast. T-20 Screw	(2)

FIG.	PART NO.	DESCRIPTION OF PART	NO. REQ.
20	16-07-0100	120 Volt Armature	(1)
21	22-84-0680	Fan	(1)
22	34-60-0920	Ball Brg. Retaining Ring	(1)
★ 23	34-40-4210	O-Ring	(1)
24	02-04-1207	Ball Bearing	(1)
★ 25	28-28-1905	Diaphragm Assembly	(1)
26	32-75-2880	Spindle Gear	(1)
27	02-04-0845	Ball Bearing	(1)
28	45-88-7550	Finger Washer	(1)
29	28-50-7720	Spindle Housing	(1)
★ 30	06-82-7326	8-16 x 1" Pan Hd. Slit. Plast. T-20 Screw	(4)
31	02-04-1005	Ball Bearing	(1)
32	38-50-5210	Spindle Shaft	(1)
33	48-68-0030	1/4" Collet Nut	(1)
34	44-40-0490	Bearing Lock Nut	(1)
35	48-66-0975	1/4" Collet	(1)
	49-96-4040	1/2" Open End Wrench (Not Shown)	(1)
	49-96-4090	11/16" Open End Wrench (Not Shown)	(1)

**FIG. LUBRICATION**

29 1/4 Oz. Type "G" Grease, No. 49-08-4140.



# SERVICE PARTS LIST

**BULLETIN NO.**  
**54-22-1025**

SPECIFY CATALOG NO. AND SERIAL NO. WHEN ORDERING PARTS		REVISED BULLETIN	DATE
<b>D. I. DIE GRINDER</b>		54-22-1024	Oct. 2012
<b>CATALOG NO.</b>	<b>5192</b>	<b>WIRING INSTRUCTION</b>	
<b>STARTING SERIAL NO.</b>	<b>669B</b>	<b>58-01-0309</b>	

**EXAMPLE:**  

00	0
----	---

 Component Parts (Small #) Are Included When Ordering The Assembly (Large #).

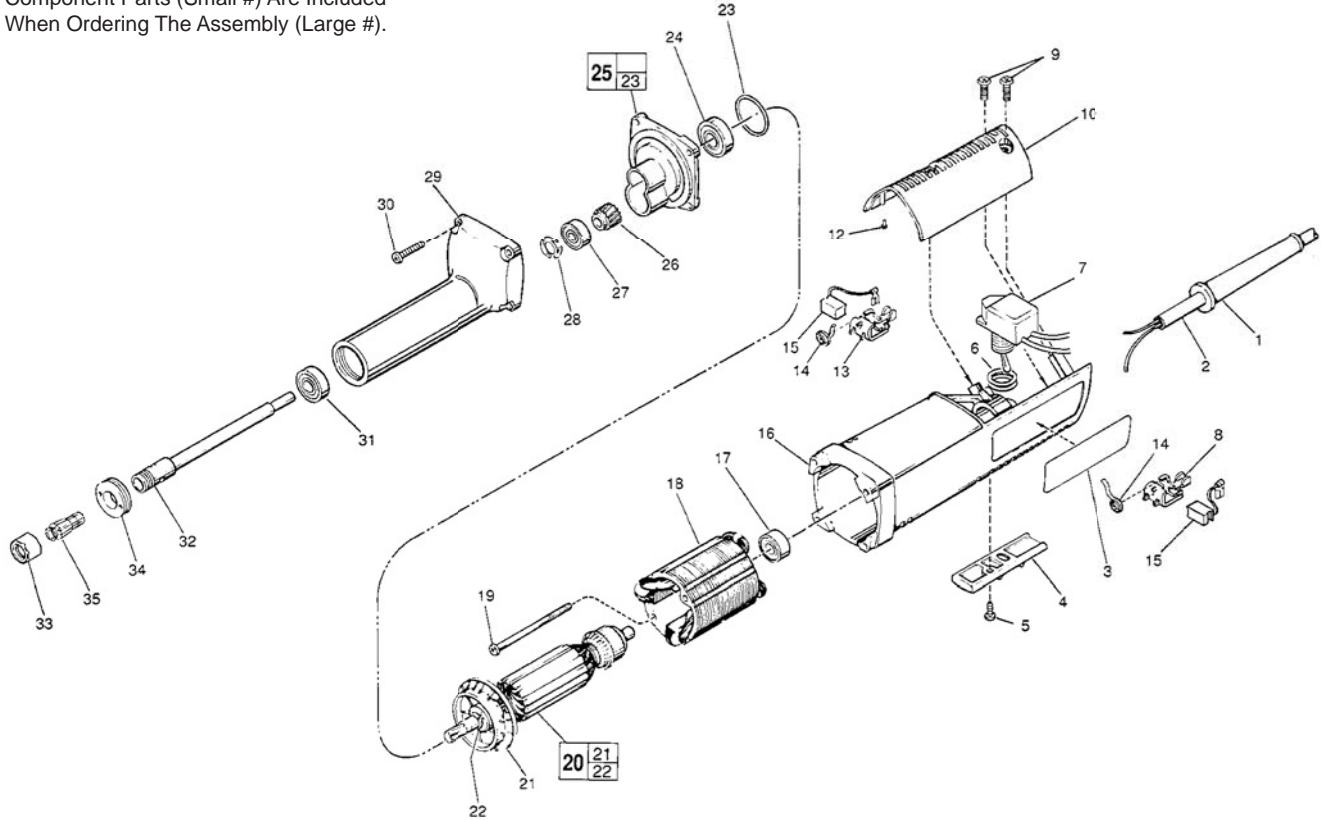


FIG.	PART NO.	DESCRIPTION OF PART	NO. REQ.
	1	44-76-0130 Cord Protector	(1)
	2	22-64-0215 Cord Set	(1)
★	3	12-20-0900 Service Nameplate Kit	(1)
★	4	31-55-0156 Trigger Cover	(1)
	5	06-82-7409 8-16 x 1/2" Pan Hd. T-20 Plastite Screw	(1)
★	6	34-40-4015 O-Ring	(2)
★	7	23-66-2190 Switch	(1)
	8	22-20-0691 Left Brush Holder	(1)
	9	06-82-7270 8-16 x 5/8" Pan Hd. T-20 Plastite Screw	(3)
★	10	31-15-0143 Motor Housing Cover	(1)
	12	42-38-0181 Rubber Bumper	(2)
	13	22-20-0692 Right Brush Holder	(1)
	14	23-52-0240 Brush Spring	(2)
	15	22-18-0710 Carbon Brush	(2)
	16	31-50-0425 Motor Housing	(1)
	17	02-04-0845 Ball Bearing	(1)
	18	18-07-0100 120 Volt Field	(1)
	19	06-82-7375 8-16 x 2-1/2" Pan Hd. Plast. T-20 Screw	(2)

FIG.	PART NO.	DESCRIPTION OF PART	NO. REQ.
	20	16-07-0100 120 Volt Armature	(1)
	21	22-84-0680 Fan	(1)
	22	34-60-0920 Ball Brg. Retaining Ring	(1)
	23	34-40-4210 O-Ring	(1)
	24	02-04-1207 Ball Bearing	(1)
	25	28-28-1905 Diaphragm Assembly	(1)
	26	32-75-2880 Spindle Gear	(1)
	27	02-04-0845 Ball Bearing	(1)
	28	45-88-7550 Finger Washer	(1)
★	29	28-50-7718 Spindle Housing	(1)
	30	06-82-7326 8-16 x 1" Pan Hd. Slit. Plast. T-20 Screw	(4)
	31	02-04-1005 Ball Bearing	(1)
★	32	38-50-5211 Spindle Shaft	(1)
★	33	48-68-0031 1/4" Collet Nut	(1)
	34	44-40-0490 Bearing Lock Nut	(1)
	35	48-66-0975 1/4" Collet	(1)
		49-96-4040 1/2" Open End Wrench (Not Shown)	(1)
		49-96-4090 11/16" Open End Wrench (Not Shown)	(1)

**FIG. LUBRICATION**

29 1/4 Oz. Type "G" Grease, No. 49-08-4140.





# SERVICE PARTS LIST

**BULLETIN NO.**  
**54-22-1026**

SPECIFY CATALOG NO. AND SERIAL NO. WHEN ORDERING PARTS		REVISED BULLETIN	DATE
<b>D. I. DIE GRINDER</b>		54-22-1025	Oct. 2012
<b>CATALOG NO.</b>	<b>5192</b>	<b>WIRING INSTRUCTION</b>	
	<b>STARTING SERIAL NO.</b>	<b>58-01-0309</b>	
	<b>669C</b>		

**EXAMPLE:**  

00	0
----	---

 Component Parts (Small #) Are Included When Ordering The Assembly (Large #).

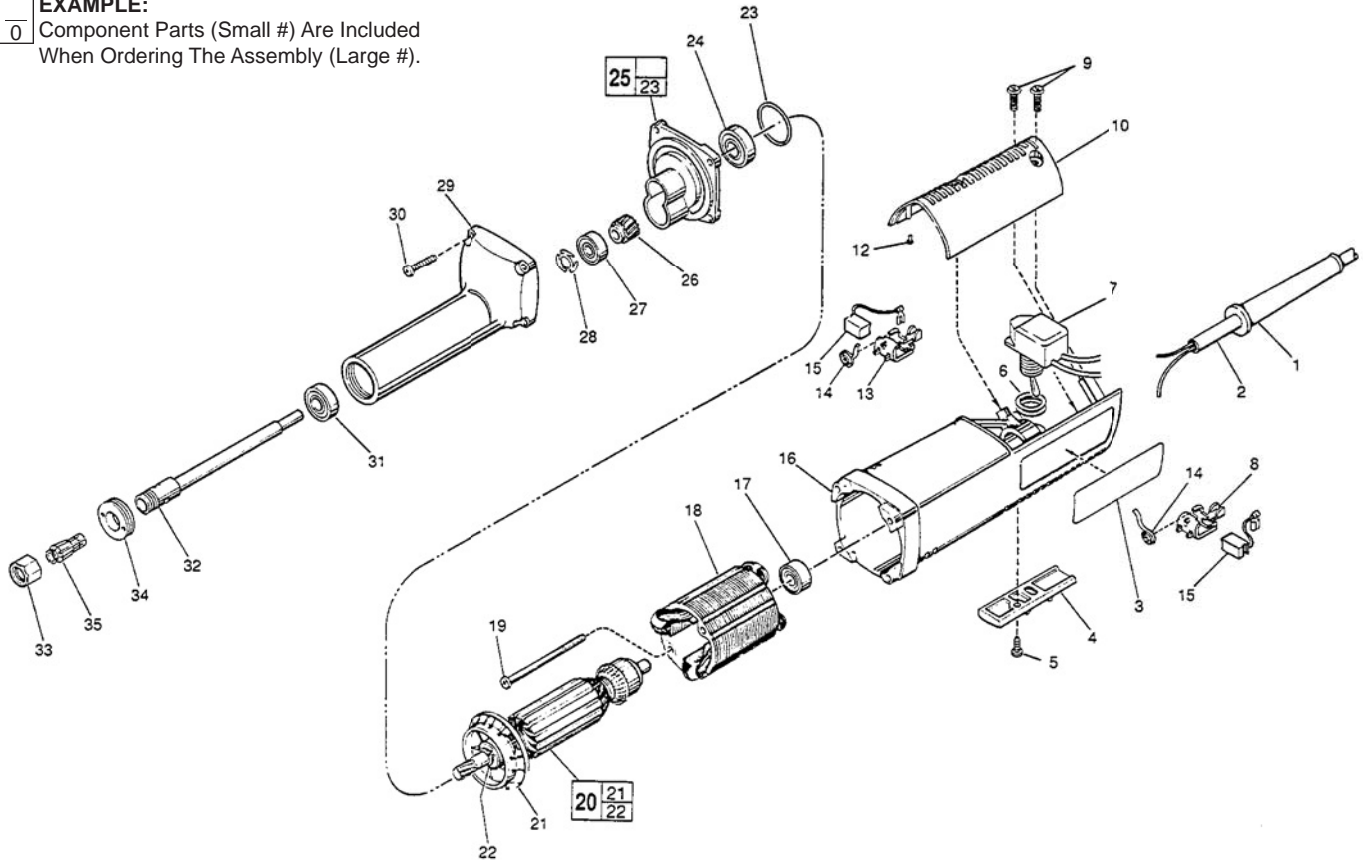


FIG.	PART NO.	DESCRIPTION OF PART	NO. REQ.
1	44-76-0130	Cord Protector	(1)
2	22-64-0215	Cord Set	(1)
3	12-20-0900	Service Nameplate Kit	(1)
4	31-55-0156	Trigger Cover	(1)
5	06-82-7409	8-16 x 1/2" Pan Hd. T-20 Plastite Screw	(1)
6	34-40-4015	O-Ring	(2)
7	23-66-2190	Switch	(1)
8	22-20-0691	Left Brush Holder	(1)
9	06-82-7270	8-16 x 5/8" Pan Hd. T-20 Plastite Screw	(3)
10	31-15-0143	Motor Housing Cover	(1)
12	42-38-0181	Rubber Bumper	(2)
13	22-20-0692	Right Brush Holder	(1)
14	23-52-0240	Brush Spring	(2)
15	22-18-0710	Carbon Brush	(2)
★16	31-50-0426	Motor Housing	(1)
17	02-04-0845	Ball Bearing	(1)
18	18-07-0100	120 Volt Field	(1)
19	06-82-7375	8-16 x 2-1/2" Pan Hd. Plast. T-20 Screw	(2)

FIG.	PART NO.	DESCRIPTION OF PART	NO. REQ.
20	16-07-0100	120 Volt Armature	(1)
21	22-84-0680	Fan	(1)
22	34-60-0920	Ball Brg. Retaining Ring	(1)
23	34-40-4210	O-Ring	(1)
24	02-04-1207	Ball Bearing	(1)
25	28-28-1905	Diaphragm Assembly	(1)
26	32-75-2880	Spindle Gear	(1)
27	02-04-0845	Ball Bearing	(1)
28	45-88-7550	Finger Washer	(1)
29	28-50-7718	Spindle Housing	(1)
★30	06-82-7296	7-18 x 1" Pan Hd. Slit. Plast. T-20 Screw	(4)
31	02-04-1005	Ball Bearing	(1)
32	38-50-5211	Spindle Shaft	(1)
33	48-68-0031	1/4" Collet Nut	(1)
34	44-40-0490	Bearing Lock Nut	(1)
35	48-66-0975	1/4" Collet	(1)
	49-96-4040	1/2" Open End Wrench (Not Shown)	(1)
	49-96-4090	11/16" Open End Wrench (Not Shown)	(1)

**FIG. LUBRICATION**

29 1/4 Oz. Type "G" Grease, No. 49-08-4140.



# SERVICE PARTS LIST

**BULLETIN NO.**  
**54-22-1027**

SPECIFY CATALOG NO. AND SERIAL NO. WHEN ORDERING PARTS			REVISED BULLETIN	DATE
<b>D. I. DIE GRINDER</b>			54-22-1026	Oct. 2012
<b>CATALOG NO.</b>	<b>5192</b>	<b>STARTING SERIAL NO.</b>	<b>WIRING INSTRUCTION</b>	
		<b>669D</b>	<b>58-01-0309</b>	

**EXAMPLE:**



Component Parts (Small #) Are Included When Ordering The Assembly (Large #).

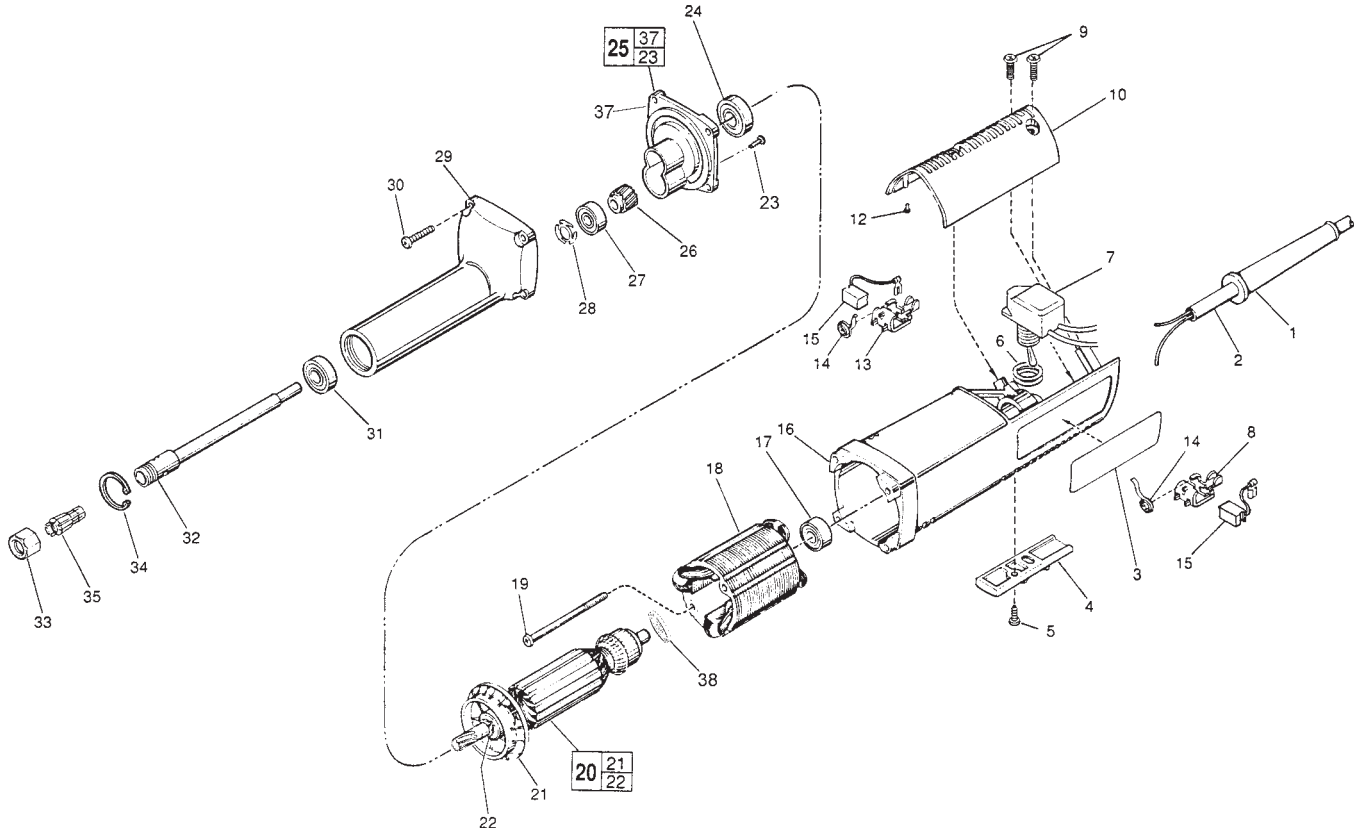


FIG.	PART NO.	DESCRIPTION OF PART	NO. REQ.	FIG.	PART NO.	DESCRIPTION OF PART	NO. REQ.
1	44-76-0130	Cord Protector	(1)	20	16-07-0100	120 Volt Armature	(1)
2	22-64-0215	Cord Set	(1)	21	22-84-0680	Fan	(1)
3	12-20-0900	Service Nameplate Kit	(1)	22	34-60-0920	Ball Brg. Retaining Ring	(1)
4	31-55-0156	Trigger Cover	(1)	★ 23	06-82-5275	Pan Head Screw	(2)
5	06-82-7409	8-16 x 1/2" Pan Hd. Plastite T-20 Screw	(1)	24	02-04-1207	Ball Bearing	(1)
6	34-40-4015	O-Ring	(2)	★ 25	28-28-1906	Diaphragm Service Kit	(1)
7	23-66-2190	Switch	(1)	26	32-75-2880	Spindle Gear	(1)
8	22-20-0691	Left Brush Holder	(1)	27	02-04-0845	Ball Bearing	(1)
9	06-82-7270	8-16 x 5/8" Pan Hd. Slit. Plastite T-20 Scr.	(3)	28	45-88-7550	Finger Washer	(1)
10	31-15-0143	Motor Housing Cover	(1)	★ 29	28-50-7722	Spindle Housing	(1)
12	42-38-0181	Rubber Bumper	(2)	30	06-82-7296	7-18 x 1" Pan Hd. Slit. Plastite T-20 Scr.	(4)
13	22-20-0692	Right Brush Holder	(1)	31	02-04-1005	Ball Bearing	(1)
14	23-52-0240	Brush Spring	(2)	32	38-50-5211	Spindle Shaft	(1)
15	22-18-0710	Carbon Brush	(2)	33	48-68-0031	1/4" Collet Nut	(1)
16	31-50-0426	Motor Housing	(1)	34	34-80-5090	Retaining Ring	(1)
17	02-04-0845	Ball Bearing	(1)	35	48-66-0975	1/4" Collet	(1)
18	18-07-0100	120 Volt Field	(1)	★ 36	28-28-1901	Diaphragm	(1)
19	06-82-7375	8-16 x 2-1/2" Pan Hd. Plastite T-20 Scr.	(2)	★ 38	23-16-1670	Commutator Insulator	(1)
					49-96-4040	1/2" Open End Wrench	(1)
					49-96-4090	11/16" Open End Wrench	(1)

**FIG. LUBRICATION**

★ 29 1/4 Oz. Type "G" Grease, No. 49-08-4140.



# SERVICE PARTS LIST

**BULLETIN NO.**  
**54-22-1028**

SPECIFY CATALOG NO. AND SERIAL NO. WHEN ORDERING PARTS		REVISED BULLETIN	DATE
<b>D. I. DIE GRINDER</b>		54-22-1027	Oct. 2012
<b>CATALOG NO.</b>	<b>5192</b>	<b>WIRING INSTRUCTION</b>	
<b>STARTING SERIAL NO.</b>	<b>669E</b>	<b>58-01-0309</b>	

**EXAMPLE:**  

00	0
----	---

 Component Parts (Small #) Are Included When Ordering The Assembly (Large #).

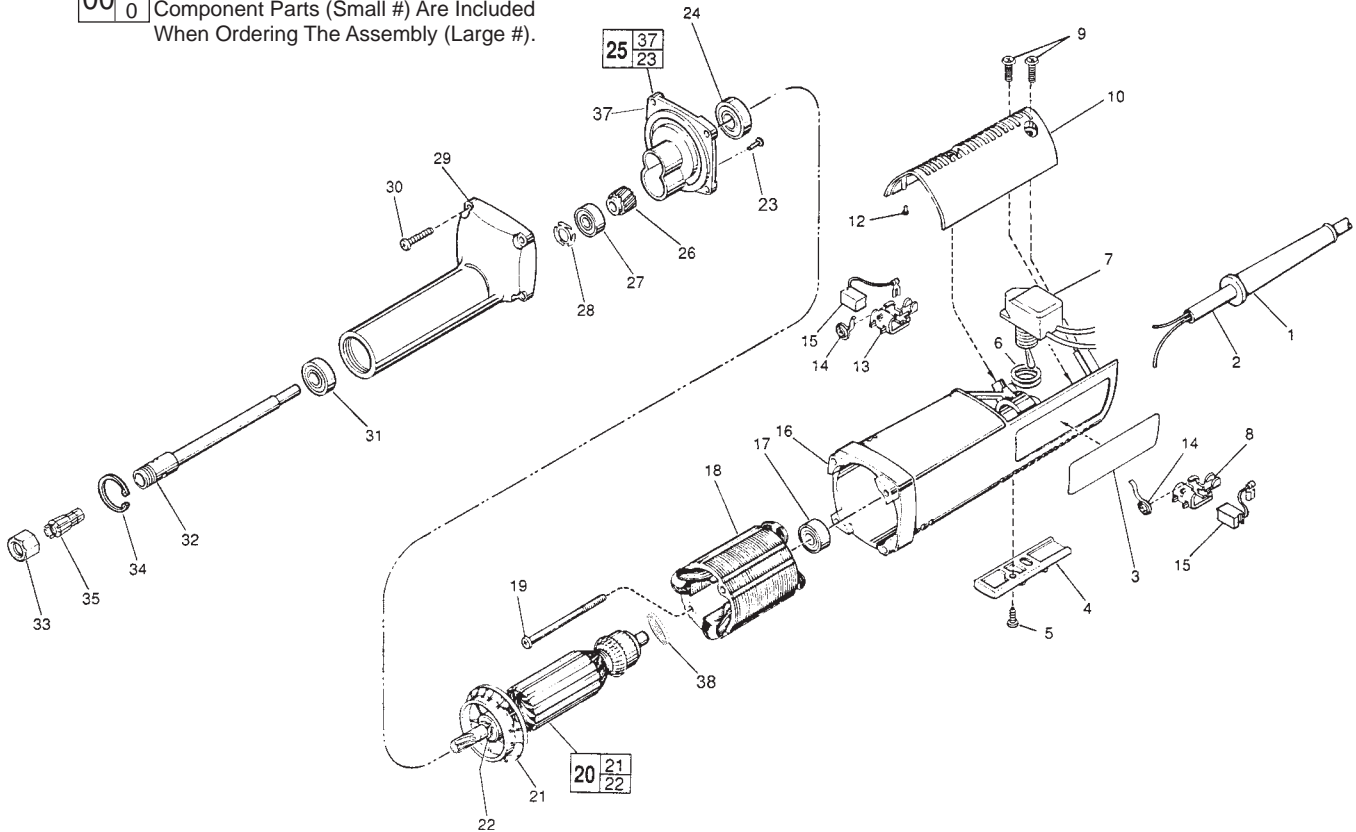
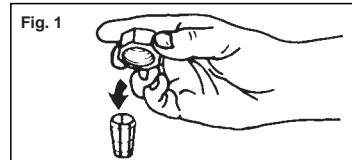


FIG.	PART NO.	DESCRIPTION OF PART	NO. REQ.
1	44-76-0130	Cord Protector	(1)
2	22-64-0215	Cord Set	(1)
3	12-20-0900	Service Nameplate Kit	(1)
4	31-55-0156	Trigger Cover	(1)
5	06-82-7409	8-16 x 1/2" Pan Hd. Plastite T-20 Screw	(1)
6	34-40-4015	O-Ring	(2)
7	23-66-2190	Switch	(1)
8	22-20-0691	Left Brush Holder	(1)
9	06-82-7270	8-16 x 5/8" Pan Hd. Slit. Plastite T-20 Scr.	(3)
10	31-15-0143	Motor Housing Cover	(1)
12	42-38-0181	Rubber Bumper	(2)
13	22-20-0692	Right Brush Holder	(1)
14	23-52-0240	Brush Spring	(2)
15	22-18-0710	Carbon Brush	(2)
16	31-50-0426	Motor Housing	(1)
17	02-04-0845	Ball Bearing	(1)
18	18-07-7100	120 Volt Field	(1)
★ 19	06-82-7430	8-16 x 2-1/8" Pan Hd. Plastite T-20 Scr.	(2)
★ 20	16-10-7100	120 Volt Armature	(1)
21	22-84-0680	Fan	(1)
22	34-60-0920	Ball Brg. Retaining Ring	(1)
23	06-82-5275	Pan Head Screw	(2)
24	02-04-1207	Ball Bearing	(1)
25	28-28-1906	Diaphragm Service Kit	(1)
26	32-75-2880	Spindle Gear	(1)
27	02-04-0845	Ball Bearing	(1)
28	45-88-7550	Finger Washer	(1)
29	28-50-7722	Spindle Housing	(1)
30	06-82-7296	7-18 x 1" Pan Hd. Slit. Plastite T-20 Scr.	(4)
31	02-04-1005	Ball Bearing	(1)
32	38-50-5211	Spindle Shaft	(1)
33	48-68-0031	1/4" Collet Nut	(1)
34	34-80-5090	Retaining Ring	(1)
35	48-66-0975	1/4" Collet	(1)
36	28-28-1901	Diaphragm	(1)

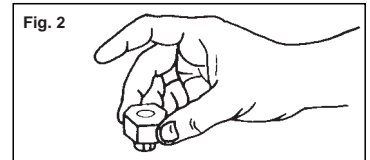
**Collets**

The collet must be attached to the collet nut before it is put into the collet shaft. Be sure that the size of the collet matches the size of the bit shank being used. If the wrong size bit shank is used, the collet may break. For attaching or detaching the collet nut to the collet, follow the illustrated instructions.

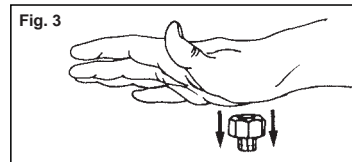
**Attaching Collet to Collet Nut**



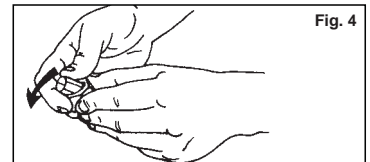
To assemble, place the narrow end of the collet on an even surface. Take the nut and place it over the collet (Fig. 1).



Position nut squarely over collet with the smaller opening of the nut facing up (Fig. 2).



Snap nut and collet together by firmly applying downward pressure into assembly with palm of hand (Fig. 3).



To remove collet from nut, hold nut firmly with one hand and press the collet to one side with the other hand (Fig. 4).

FIG.	PART NO.	DESCRIPTION OF PART	NO. REQ.
38	23-16-1670	Commutator Insulator	(1)
	49-96-4040	1/2" Open End Wrench	(1)
	49-96-4090	11/16" Open End Wrench	(1)

**FIG. LUBRICATION**

29 1/4 Oz. Type "G" Grease, No. 49-08-4140.





# SERVICE PARTS LIST

**BULLETIN NO.**  
**54-22-1260**

SPECIFY CATALOG NO. AND SERIAL NO. WHEN ORDERING PARTS		REVISED BULLETIN	DATE
<b>D. I. DIE GRINDER</b>			Oct. 2012
<b>CATALOG NO.</b>	<b>5194</b>	<b>STARTING SERIAL NO.</b>	<b>803A</b>
			<b>WIRING INSTRUCTION</b> <b>58-01-0306</b>

**EXAMPLE:**  
Component Parts (Small #) Are Included  
When Ordering The Assembly (Large #).

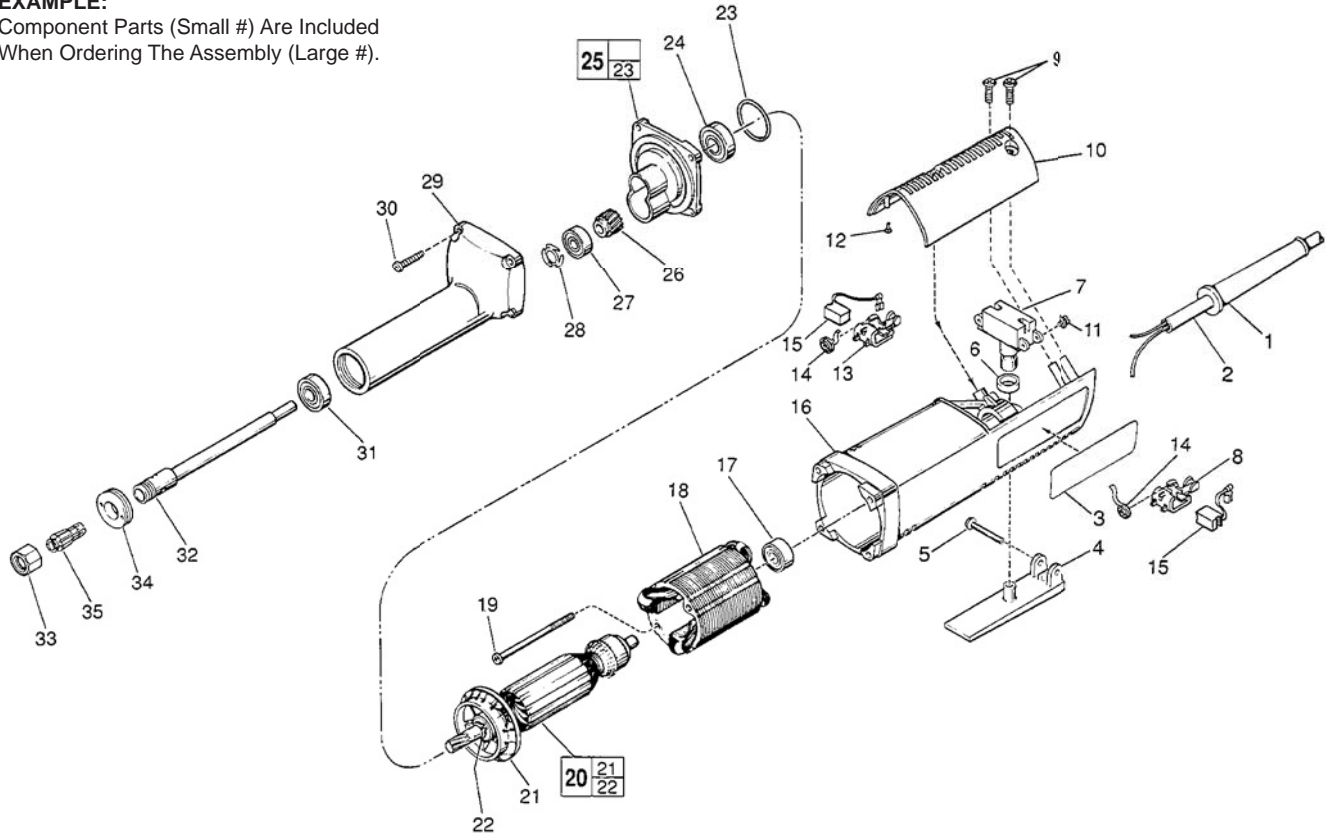


FIG.	PART NO.	DESCRIPTION OF PART	NO. REQ.
1	44-76-0130	Cord Protector	(1)
2	22-64-0215	Cord Set	(1)
3	12-20-0465	Service Nameplate Kit	(1)
4	31-92-0110	Trigger	(1)
5	06-72-0815	Tapered Rivet	(1)
6	44-90-4245	Rubber Ring	(1)
7	23-66-1170	Switch	(1)
8	22-20-0691	Left Brush Holder	(1)
9	06-82-7270	8-16 x 5/8" Pan Hd. T-20 Plastite Screw	(3)
10	31-15-0142	Motor Housing Cover	(1)
11	06-95-0125	Switch Terminal Screw	(2)
12	42-38-0181	Rubber Bumper	(2)
13	22-20-0692	Right Brush Holder	(1)
14	23-52-0240	Brush Spring	(2)
15	22-18-0710	Carbon Brush	(2)
16	31-50-0425	Motor Housing	(1)
17	02-04-0845	Ball Bearing	(1)
18	18-07-0100	120 Volt Field	(1)
19	06-82-7375	8-16 x 2-1/2" Pan Hd. Plast. T-20 Screw	(2)

FIG.	PART NO.	DESCRIPTION OF PART	NO. REQ.
20	16-07-0100	120 Volt Armature	(1)
21	22-84-0680	Fan	(1)
22	34-60-0920	Ball Brg. Retaining Ring	(1)
23	34-40-4210	O-Ring	(1)
24	02-04-1207	Ball Bearing	(1)
25	28-28-1905	Diaphragm Assembly	(1)
26	32-75-2880	Spindle Gear	(1)
27	02-04-0845	Ball Bearing	(1)
28	45-88-7550	Finger Washer	(1)
29	28-50-7720	Spindle Housing	(1)
30	06-82-7326	8-16 x 1" Pan Hd. Slit. Plast. T-20 Screw	(4)
31	02-04-1005	Ball Bearing	(1)
32	38-50-5210	Spindle Shaft	(1)
33	48-68-0030	1/4" Collet Nut	(1)
34	44-40-0490	Bearing Lock Nut	(1)
35	48-66-0975	1/4" Collet	(1)
	49-96-4040	1/2" Open End Wrench (Not Shown)	(1)
	49-96-4090	11/16" Open End Wrench (Not Shown)	(1)

**FIG. LUBRICATION**

29 1/4 Oz. Type "D" Grease, No. 49-08-4110.



# SERVICE PARTS LIST

**BULLETIN NO.**  
**54-22-1261**

SPECIFY CATALOG NO. AND SERIAL NO. WHEN ORDERING PARTS		REVISED BULLETIN	DATE
<b>D. I. DIE GRINDER</b>		54-22-1260	Oct. 2012
<b>CATALOG NO.</b>	<b>5194</b>	<b>WIRING INSTRUCTION</b>	
<b>STARTING SERIAL NO.</b>	<b>803B</b>	<b>58-01-0309</b>	

**EXAMPLE:**  

00	0
----	---

 Component Parts (Small #) Are Included When Ordering The Assembly (Large #).

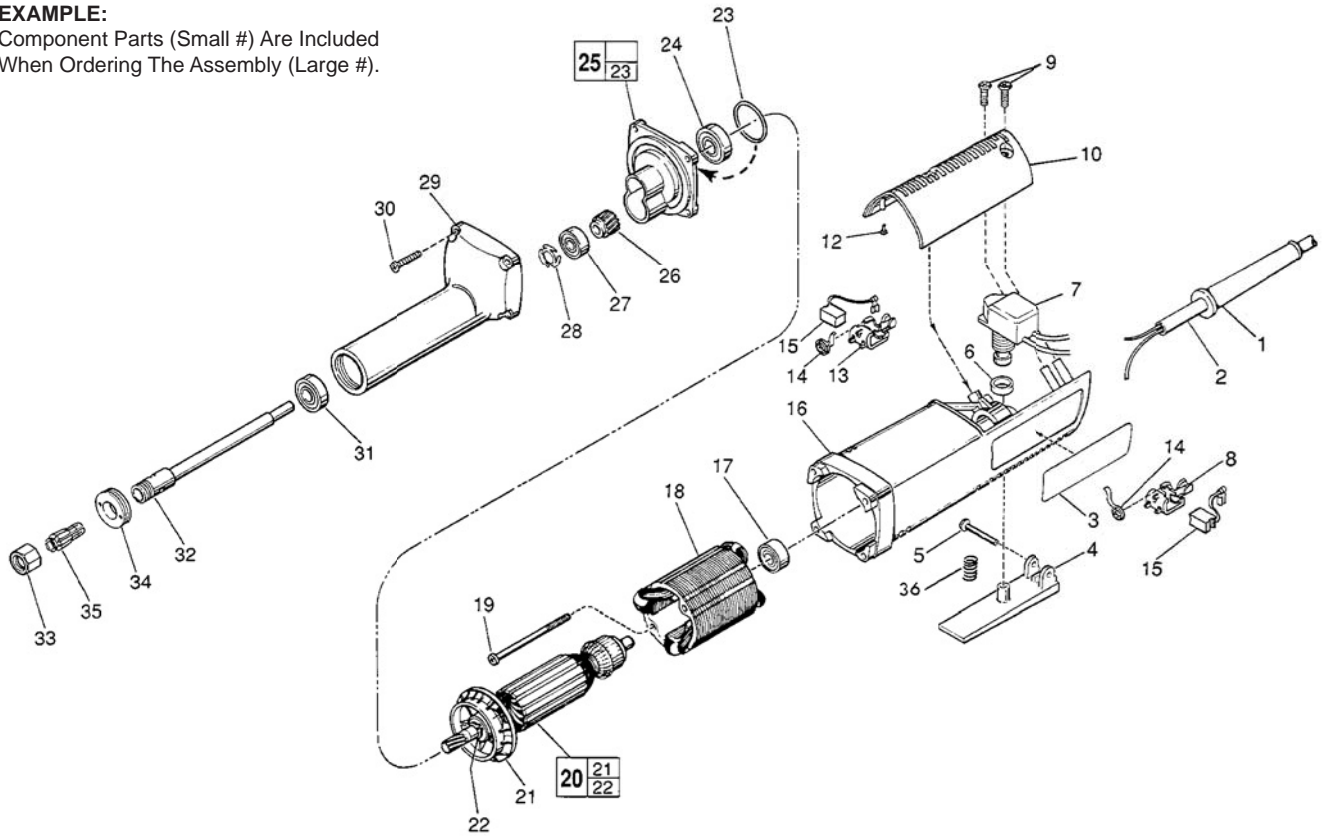


FIG.	PART NO.	DESCRIPTION OF PART	NO. REQ.	FIG.	PART NO.	DESCRIPTION OF PART	NO. REQ.
1	44-76-0130	Cord Protector	(1)	20	16-07-0100	120 Volt Armature	(1)
2	22-64-0215	Cord Set	(1)	21	22-84-0680	Fan	(1)
3	12-20-0465	Service Nameplate Kit	(1)	22	34-60-0920	Ball Brg. Retaining Ring	(1)
4	31-92-0110	Trigger	(1)	23	34-40-4210	O-Ring	(1)
5	06-72-0815	Tapered Rivet	(1)	24	02-04-1207	Ball Bearing	(1)
6	44-90-4245	Rubber Ring	(1)	25	28-28-1905	Diaphragm Assembly	(1)
★ 7	23-66-2170	Switch	(1)	26	32-75-2880	Spindle Gear	(1)
8	22-20-0691	Left Brush Holder	(1)	27	02-04-0845	Ball Bearing	(1)
9	06-82-7270	8-16 x 5/8" Pan Hd. T-20 Plastite Screw	(3)	28	45-88-7550	Finger Washer	(1)
10	31-15-0142	Motor Housing Cover	(1)	29	28-50-7720	Spindle Housing	(1)
12	42-38-0181	Rubber Bumper	(2)	30	06-82-7326	8-16 x 1" Pan Hd. Slit. Plast. T-20 Screw	(4)
13	22-20-0692	Right Brush Holder	(1)	31	02-04-1005	Ball Bearing	(1)
14	23-52-0240	Brush Spring	(2)	32	38-50-5210	Spindle Shaft	(1)
15	22-18-0710	Carbon Brush	(2)	33	48-68-0030	1/4" Collet Nut	(1)
16	31-50-0425	Motor Housing	(1)	34	44-40-0490	Bearing Lock Nut	(1)
17	02-04-0845	Ball Bearing	(1)	35	48-66-0975	1/4" Collet	(1)
18	18-07-0100	120 Volt Field	(1)	★ 36	40-50-1300	Spring	(1)
19	06-82-7375	8-16 x 2-1/2" Pan Hd. Plast. T-20 Screw	(2)		49-96-4040	1/2" Open End Wrench (Not Shown)	(1)
					49-96-4090	11/16" Open End Wrench (Not Shown)	(1)

**FIG. LUBRICATION**  
 29 1/4 Oz. Type "D" Grease, No. 49-08-4110.



# SERVICE PARTS LIST

**BULLETIN NO.**  
**54-22-1262**

SPECIFY CATALOG NO. AND SERIAL NO. WHEN ORDERING PARTS		REVISED BULLETIN	DATE
<b>D. I. DIE GRINDER</b>		54-22-1261	Oct. 2012
<b>CATALOG NO.</b>	<b>5194</b>	<b>WIRING INSTRUCTION</b>	
<b>STARTING SERIAL NO.</b>	<b>803C</b>	<b>58-01-0309</b>	

**EXAMPLE:**  

00	0
----	---

 Component Parts (Small #) Are Included When Ordering The Assembly (Large #).

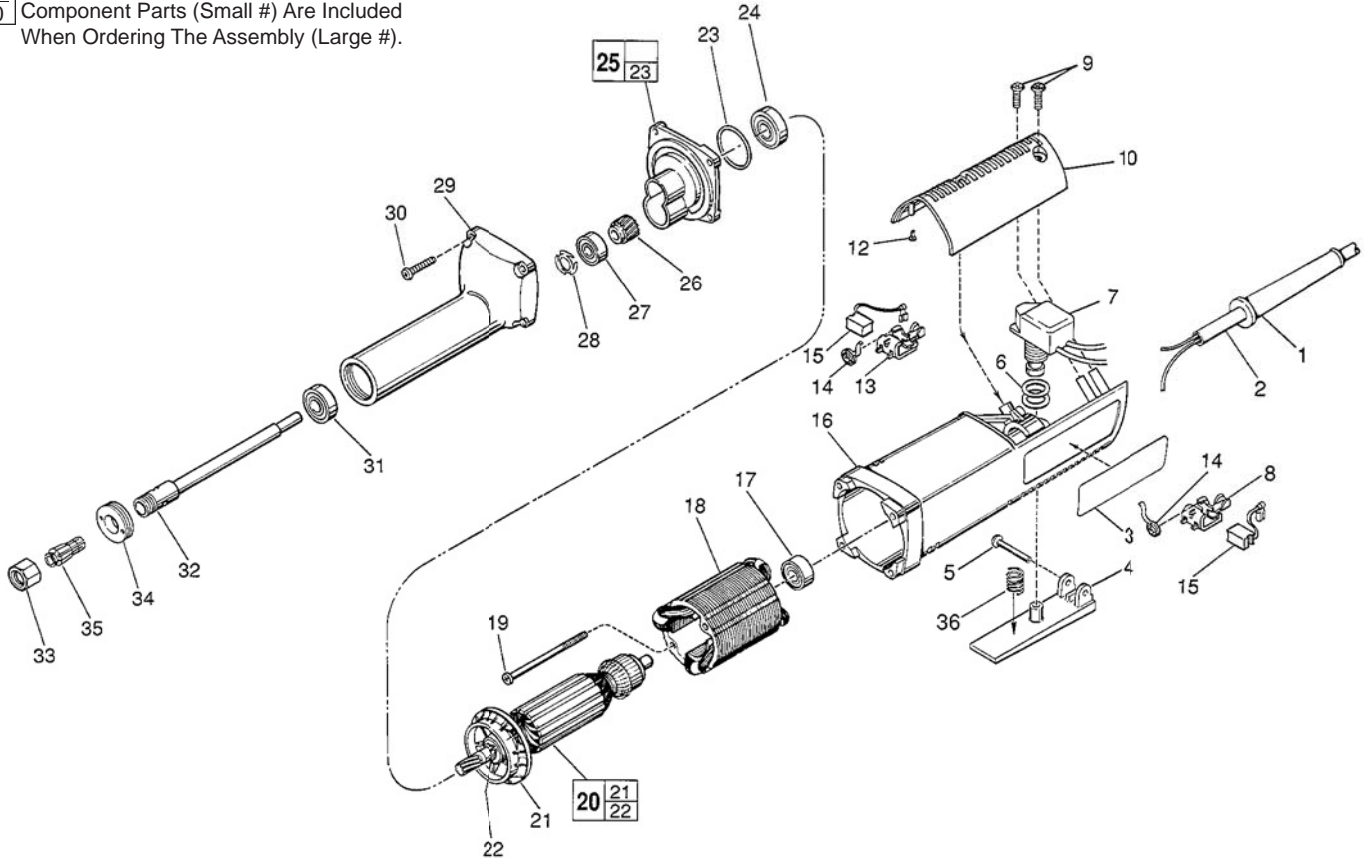


FIG.	PART NO.	DESCRIPTION OF PART	NO. REQ.
	1	Cord Protector	(1)
	2	Cord Set	(1)
★	3	Service Nameplate Kit	(1)
★	4	Trigger	(1)
	5	Tapered Rivet	(1)
★	6	O-Ring	(2)
★	7	Switch	(1)
	8	Left Brush Holder	(1)
	9	8-16 x 5/8" Pan Hd. T-20 Plastite Screw	(3)
★	10	Motor Housing Cover	(1)
	12	Rubber Bumper	(2)
	13	Right Brush Holder	(1)
	14	Brush Spring	(2)
	15	Carbon Brush	(2)
	16	Motor Housing	(1)
	17	Ball Bearing	(1)
	18	120 Volt Field	(1)
	19	8-16 x 2-1/2" Pan Hd. Plast. T-20 Screw	(2)

FIG.	PART NO.	DESCRIPTION OF PART	NO. REQ.
	20	16-07-0100 120 Volt Armature	(1)
	21	22-84-0680 Fan	(1)
	22	34-60-0920 Ball Brg. Retaining Ring	(1)
	23	34-40-4210 O-Ring	(1)
	24	02-04-1207 Ball Bearing	(1)
	25	28-28-1905 Diaphragm Assembly	(1)
	26	32-75-2880 Spindle Gear	(1)
	27	02-04-0845 Ball Bearing	(1)
	28	45-88-7550 Finger Washer	(1)
★	29	28-50-7718 Spindle Housing	(1)
	30	06-82-7326 8-16 x 1" Pan Hd. Slit. Plast. T-20 Screw	(4)
	31	02-04-1005 Ball Bearing	(1)
★	32	38-50-5211 Spindle Shaft	(1)
★	33	48-68-0031 1/4" Collet Nut	(1)
	34	44-40-0490 Bearing Lock Nut	(1)
	35	48-66-0975 1/4" Collet	(1)
	36	40-50-1300 Spring	(1)
	49-96-4040	1/2" Open End Wrench (Not Shown)	(1)
	49-96-4090	11/16" Open End Wrench (Not Shown)	(1)

**FIG. LUBRICATION**

29 1/4 Oz. Type "D" Grease, No. 49-08-4110.



# SERVICE PARTS LIST

**BULLETIN NO.**  
**54-22-1263**

SPECIFY CATALOG NO. AND SERIAL NO. WHEN ORDERING PARTS		REVISED BULLETIN	DATE
<b>D. I. DIE GRINDER</b>		54-22-1262	Oct. 2012
<b>CATALOG NO.</b>	<b>5194</b>	<b>WIRING INSTRUCTION</b>	
<b>STARTING SERIAL NO.</b>	<b>803D</b>	<b>58-01-0309</b>	

**EXAMPLE:**  

00	0
----	---

 Component Parts (Small #) Are Included When Ordering The Assembly (Large #).

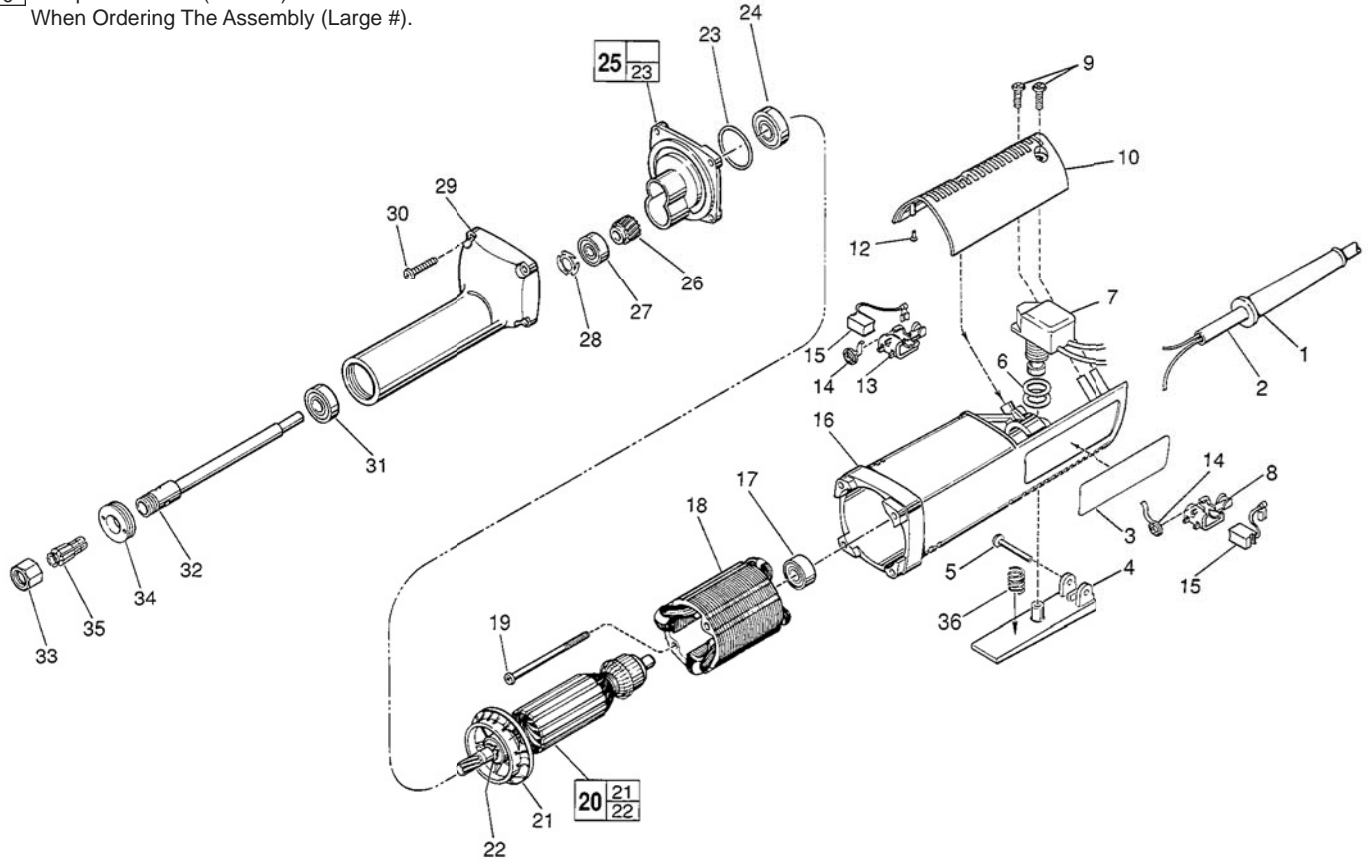


FIG.	PART NO.	DESCRIPTION OF PART	NO. REQ.
1	44-76-0130	Cord Protector	(1)
2	22-64-0215	Cord Set	(1)
3	12-20-0910	Service Nameplate Kit	(1)
4	31-92-0112	Trigger	(1)
5	06-72-0815	Tapered Rivet	(1)
6	34-40-4015	O-Ring	(2)
7	23-66-2171	Switch	(1)
8	22-20-0691	Left Brush Holder	(1)
9	06-82-7270	8-16 x 5/8" Pan Hd. T-20 Plastite Screw	(3)
10	31-15-0143	Motor Housing Cover	(1)
12	42-38-0181	Rubber Bumper	(2)
13	22-20-0692	Right Brush Holder	(1)
14	23-52-0240	Brush Spring	(2)
15	22-18-0710	Carbon Brush	(2)
★16	31-50-0426	Motor Housing	(1)
17	02-04-0845	Ball Bearing	(1)
18	18-07-0100	120 Volt Field	(1)
19	06-82-7375	8-16 x 2-1/2" Pan Hd. Plast. T-20 Screw	(2)

FIG.	PART NO.	DESCRIPTION OF PART	NO. REQ.
20	16-07-0100	120 Volt Armature	(1)
21	22-84-0680	Fan	(1)
22	34-60-0920	Ball Brg. Retaining Ring	(1)
23	34-40-4210	O-Ring	(1)
24	02-04-1207	Ball Bearing	(1)
25	28-28-1905	Diaphragm Assembly	(1)
26	32-75-2880	Spindle Gear	(1)
27	02-04-0845	Ball Bearing	(1)
28	45-88-7550	Finger Washer	(1)
29	28-50-7718	Spindle Housing	(1)
★30	06-82-7296	7-18 x 1" Pan Hd. Slit. Plast. T-20 Screw	(4)
31	02-04-1005	Ball Bearing	(1)
32	38-50-5211	Spindle Shaft	(1)
33	48-68-0031	1/4" Collet Nut	(1)
34	44-40-0490	Bearing Lock Nut	(1)
35	48-66-0975	1/4" Collet	(1)
36	40-50-1300	Spring	(1)
	49-96-4040	1/2" Open End Wrench (Not Shown)	(1)
	49-96-4090	11/16" Open End Wrench (Not Shown)	(1)

**FIG. LUBRICATION**

29 1/4 Oz. Type "D" Grease, No. 49-08-4110.



# SERVICE PARTS LIST

**BULLETIN NO.**  
**54-22-1264**

SPECIFY CATALOG NO. AND SERIAL NO. WHEN ORDERING PARTS		REVISED BULLETIN	DATE
<b>D. I. DIE GRINDER</b>		54-22-1263	Oct. 2012
<b>CATALOG NO.</b>	<b>5194</b>	<b>WIRING INSTRUCTION</b>	
<b>STARTING SERIAL NO.</b>	<b>803E</b>	<b>58-01-0309</b>	

**EXAMPLE:**  

00	0
----	---

 Component Parts (Small #) Are Included  
 When Ordering The Assembly (Large #).

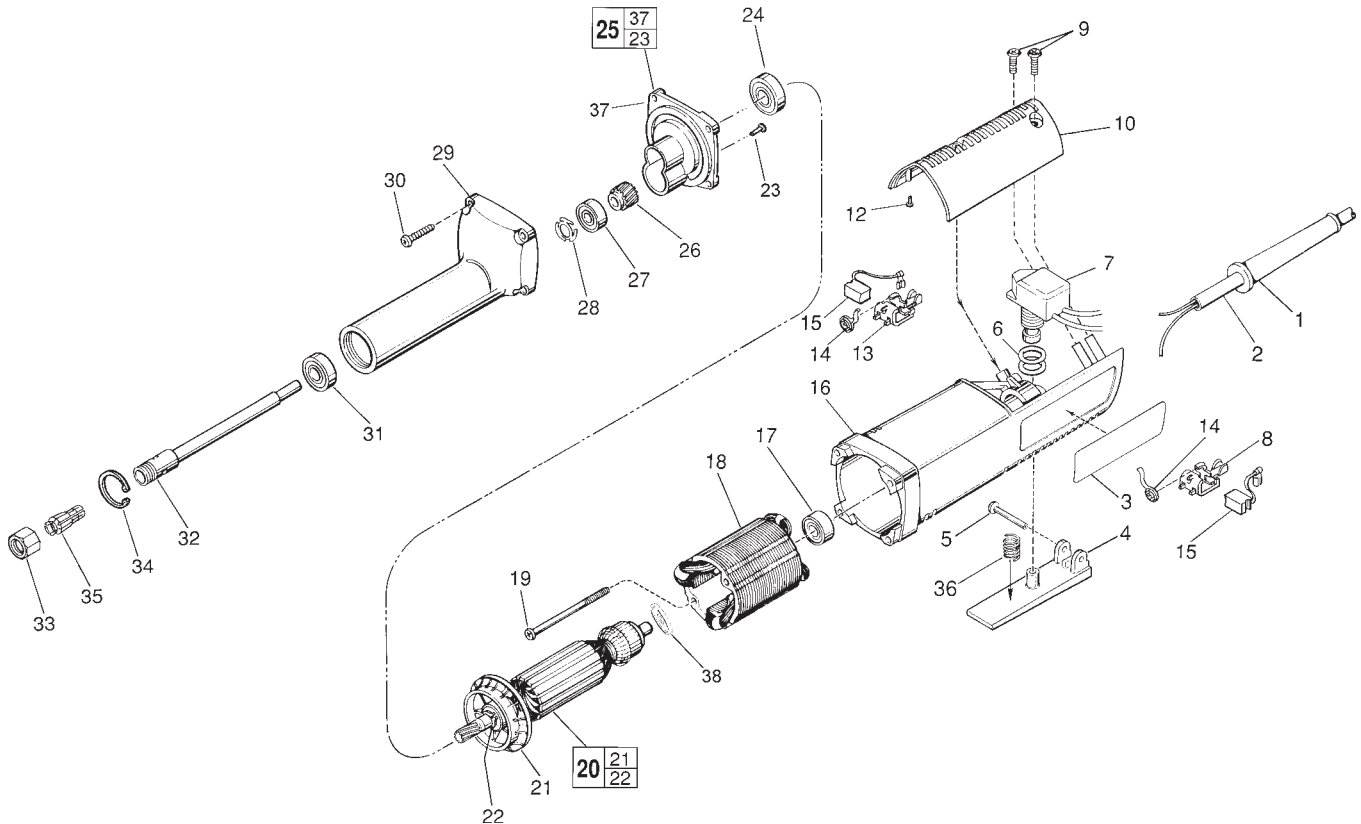


FIG.	PART NO.	DESCRIPTION OF PART	NO. REQ.
1	44-76-0130	Cord Protector	(1)
2	22-64-0215	Cord Set	(1)
3	12-20-0910	Service Nameplate Kit	(1)
4	31-92-0112	Trigger	(1)
5	06-72-0815	Tapered Rivet	(1)
6	34-40-4015	O-Ring	(2)
7	23-66-2171	Switch	(1)
8	22-20-0691	Left Brush Holder	(1)
9	06-82-7270	8-16 x 5/8" Pan Hd. Slit. Plast. T-20	(3)
10	31-15-0143	Motor Housing Cover	(1)
12	42-38-0181	Rubber Bumper	(2)
13	22-20-0692	Right Brush Holder	(1)
14	23-52-0240	Brush Spring	(2)
15	22-18-0710	Carbon Brush	(2)
16	31-50-0426	Motor Housing	(1)
17	02-04-0845	Ball Bearing	(1)
18	18-07-0100	120 Volt Field	(1)
19	06-82-7375	8-16x2-1/2" Pan Hd. Plast. T-20	(2)

FIG.	PART NO.	DESCRIPTION OF PART	NO. REQ.
20	16-07-0100	120 Volt Armature	(1)
21	22-84-0680	Fan	(1)
22	34-60-0920	Ball Brg. Retaining Ring	(1)
★ 23	06-82-5275	Pan Head Screw	(2)
24	02-04-1207	Ball Bearing	(1)
★ 25	28-28-1906	Diaphragm Service Kit	(1)
26	32-75-2880	Spindle Gear	(1)
27	02-04-0845	Ball Bearing	(1)
28	45-88-7550	Finger Washer	(1)
★ 29	28-50-7722	Spindle Housing	(1)
30	06-82-7296	7-18 x 1" Pan Hd. Slit. Plast. T-20	(4)
31	02-04-1005	Ball Bearing	(1)
32	38-50-5211	Spindle Shaft	(1)
33	48-68-0031	1/4" Collet Nut	(1)
★ 34	34-80-5090	Retaining Ring	(1)
35	48-66-0975	1/4" Collet	(1)
36	40-50-1300	Spring	(1)
★ 37	28-28-1901	Diaphragm	(1)
★ 38	23-16-1670	Commutator Insulator	(1)
	49-96-4040	1/2" Open End Wrench	(1)
	49-96-4090	11/16" Open End Wrench	(1)

**FIG. LUBRICATION:**

29 1/4 Oz. Type "G" Grease, No. 49-08-4140.





# SERVICE PARTS LIST

**BULLETIN NO.**  
**54-22-1265**

SPECIFY CATALOG NO. AND SERIAL NO. WHEN ORDERING PARTS		REVISED BULLETIN	DATE
<b>D. I. DIE GRINDER</b>		54-22-1264	Oct. 2012
<b>CATALOG NO.</b>	<b>5194</b>	<b>WIRING INSTRUCTION</b>	
<b>STARTING SERIAL NO.</b>	<b>803F</b>	<b>58-01-0309</b>	

**EXAMPLE:**  

00	0
----	---

 Component Parts (Small #) Are Included When Ordering The Assembly (Large #).

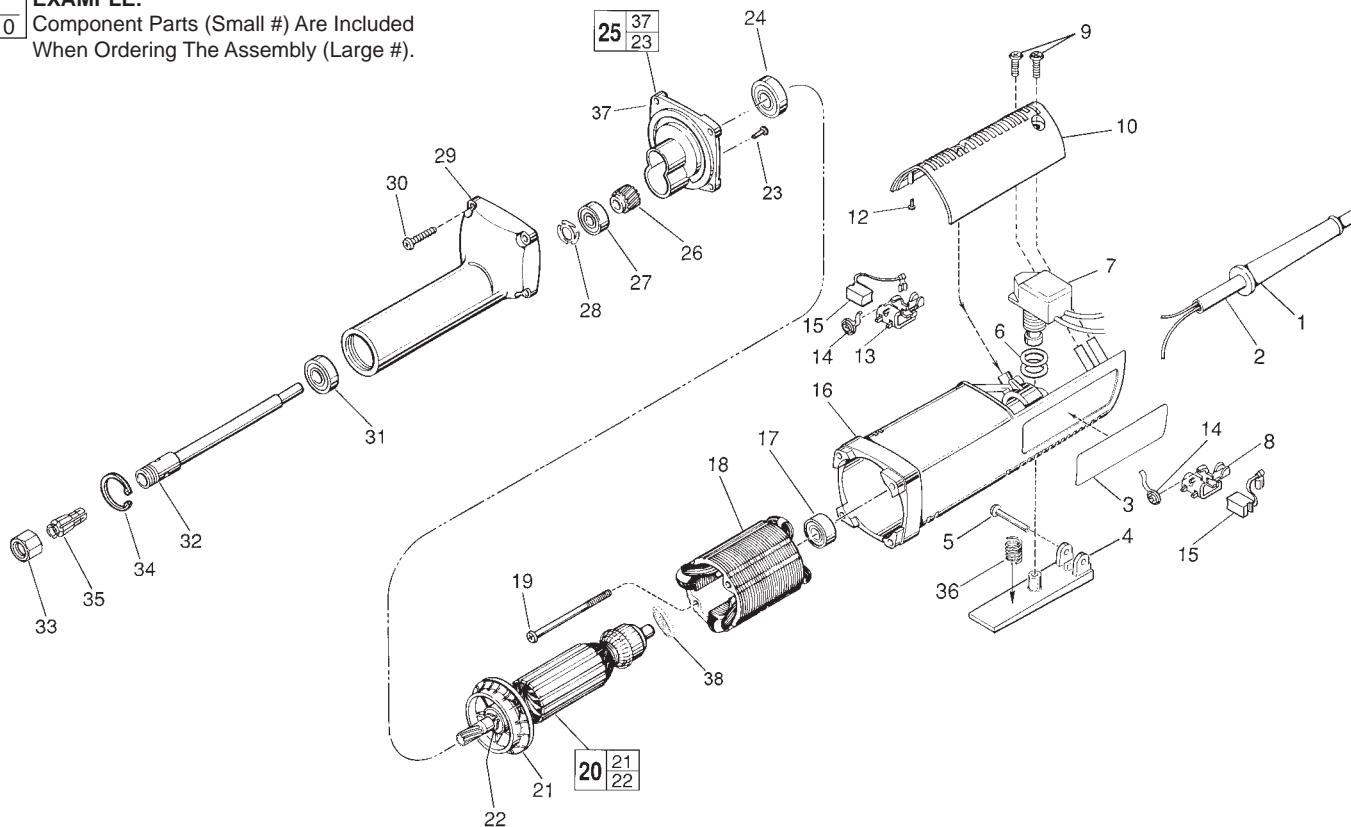
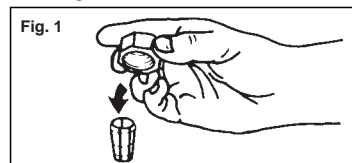


FIG.	PART NO.	DESCRIPTION OF PART	NO. REQ.
1	44-76-0130	Cord Protector	(1)
2	22-64-0215	Cord Set	(1)
3	12-20-0910	Service Nameplate Kit	(1)
4	31-92-0112	Trigger	(1)
5	06-72-0815	Tapered Rivet	(1)
6	34-40-4015	O-Ring	(2)
7	23-66-2171	Switch	(1)
8	22-20-0691	Left Brush Holder	(1)
9	06-82-7270	8-16 x 5/8" Pan Hd. Slit. Plast. T-20	(3)
10	31-15-0143	Motor Housing Cover	(1)
12	42-38-0181	Rubber Bumper	(2)
13	22-20-0692	Right Brush Holder	(1)
14	23-52-0240	Brush Spring	(2)
15	22-18-0710	Carbon Brush	(2)
16	31-50-0426	Motor Housing	(1)
17	02-04-0845	Ball Bearing	(1)
18	18-07-7100	120 Volt Field	(1)
★ 19	06-82-7430	8-16x2-1/8" Pan Hd. Plast. T-20	(2)
★ 20	16-10-7100	120 Volt Armature	(1)
21	22-84-0680	Fan	(1)
22	34-60-0920	Ball Brg. Retaining Ring	(1)
23	06-82-5275	Pan Head Screw	(2)
24	02-04-1207	Ball Bearing	(1)
25	28-28-1906	Diaphragm Service Kit	(1)
26	32-75-2880	Spindle Gear	(1)
27	02-04-0845	Ball Bearing	(1)
28	45-88-7550	Finger Washer	(1)
29	28-50-7722	Spindle Housing	(1)
30	06-82-7296	7-18 x 1" Pan Hd. Slit. Plast. T-20	(4)
31	02-04-1005	Ball Bearing	(1)
32	38-50-5211	Spindle Shaft	(1)
33	48-68-0031	1/4" Collet Nut	(1)
34	34-80-5090	Retaining Ring	(1)
35	48-66-0975	1/4" Collet	(1)
36	40-50-1300	Spring	(1)

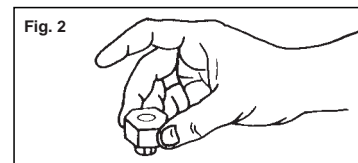
**Collets**

The collet must be attached to the collet nut before it is put into the collet shaft. Be sure that the size of the collet matches the size of the bit shank being used. If the wrong size bit shank is used, the collet may break. For attaching or detaching the collet nut to the collet, follow the illustrated instructions.

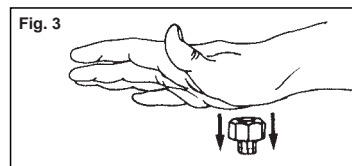
**Attaching Collet to Collet Nut**



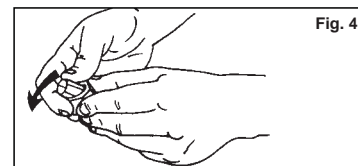
To assemble, place the narrow end of the collet on an even surface. Take the nut and place it over the collet (Fig. 1).



Position nut squarely over collet with the smaller opening of the nut facing up (Fig. 2).



Snap nut and collet together by firmly applying downward pressure into assembly with palm of hand (Fig. 3).



To remove collet from nut, hold nut firmly with one hand and press the collet to one side with the other hand (Fig. 4).

FIG.	PART NO.	DESCRIPTION OF PART	NO. REQ.
37	28-28-1901	Diaphragm	(1)
38	23-16-1670	Commutator Insulator	(1)
	49-96-4040	1/2" Open End Wrench	(1)
	49-96-4090	11/16" Open End Wrench	(1)

**FIG. LUBRICATION:**

29 1/4 Oz. Type "G" Grease, No. 49-08-4140.