



SERVICE PARTS LIST

BULLETIN NO.
54-04-0015

SPECIFY CATALOG NO. AND SERIAL NO. WHEN ORDERING PARTS		REVISED BULLETIN	
M12™ FOUR BAY SEQUENTIAL CHARGER			
CATALOG NO. 48-59-1204	SERIAL NUMBER	G46A	WIRING INSTRUCTION

00
0

EXAMPLE:
Component Parts (Small #) Are Included
When Ordering The Assembly (Large #).

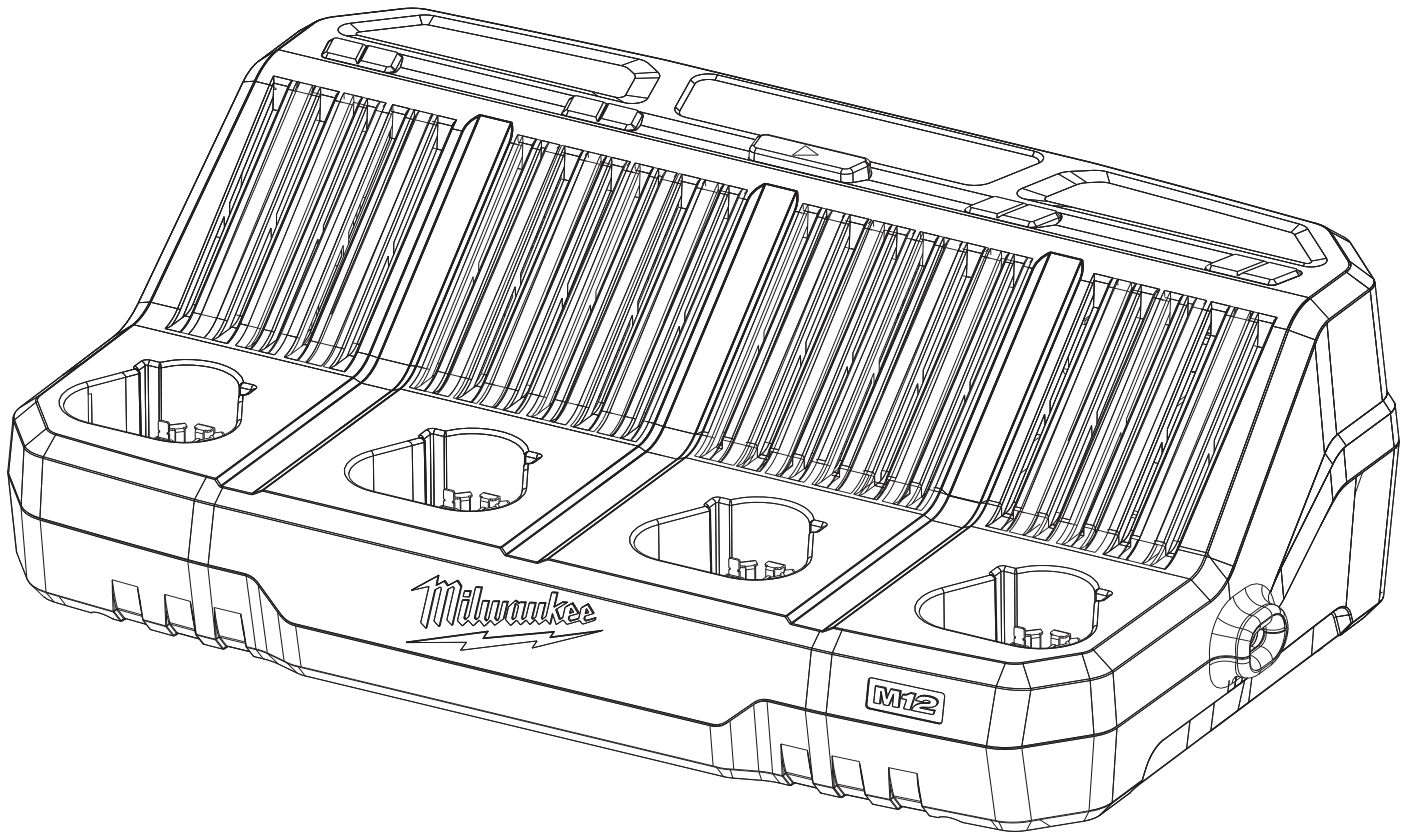


FIG.	PART NO.	DESCRIPTION OF PART	NO. REQ.	FIG.	NOTES
1	12-20-1204	Service Nameplate (Not Shown)	(1)	1	A clean, dry surface is essential for proper performance for any adhesive system. The area intended for application of any adhesive label or nameplate must be prepared by cleaning with isopropyl alcohol. The solvent is to be applied with a clean, lint free applicator and the surface allowed to dry before applying the label or nameplate.



SERVICE PARTS LIST

**BULLETIN NO.
54-04-2400**

SPECIFY CATALOG NO. AND SERIAL NO. WHEN ORDERING PARTS			REVISED BULLETIN
Li-Ion Battery Charger			
CATALOG NO.	48-59-2401	SERIAL NUMBER	B31A
			WIRING INSTRUCTION

EXAMPLE:

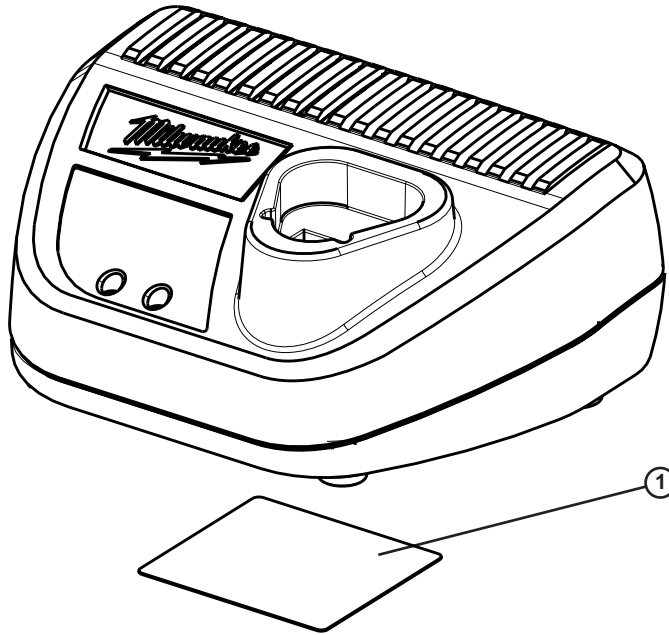
00	0
----	---

Component Parts (Small #)
Are Included When Ordering
The Assembly (Large #).

FIG.	PART NO.	DESCRIPTION OF PART	NO. REQ.
1	12-20-2401	Service Nameplate	(1)

FIG. NOTES

- 1 A clean, dry surface is essential for proper performance for any adhesive system. The area intended for application of any adhesive label or nameplate must be prepared by cleaning with isopropyl alcohol. The solvent is to be applied with a clean, lint free applicator and the surface allowed to dry before applying the label or nameplate.





SERVICE PARTS LIST

BULLETIN NO.
54-04-2405

SPECIFY CATALOG NO. AND SERIAL NO. WHEN ORDERING PARTS			REVISED BULLETIN
AC/DC 12 Volt Battery Charger			
CATALOG NO.	2510-20	SERIAL NUMBER	C02A
			WIRING INSTRUCTION

00 / 0

EXAMPLE:

Component Parts (Small #)
Are Included When Ordering
The Assembly (Large #).

FIG.	PART NO.	DESCRIPTION OF PART	NO. REQ.
1	-----	Housing Bottom	(1)
2	-----	Housing Top	(1)
4	-----	Light Pipe	(2)
5	-----	PCB Assembly	(1)
6	-----	Terminal Board	(1)
7	-----	8-16 x 1" Slit. Plastite T-20 Screw	(4)
8	22-64-1190	AC/DC Power Cord	(1)
9	12-20-2405	Service Nameplate	(1)
10	-----	Charger Label	(1)

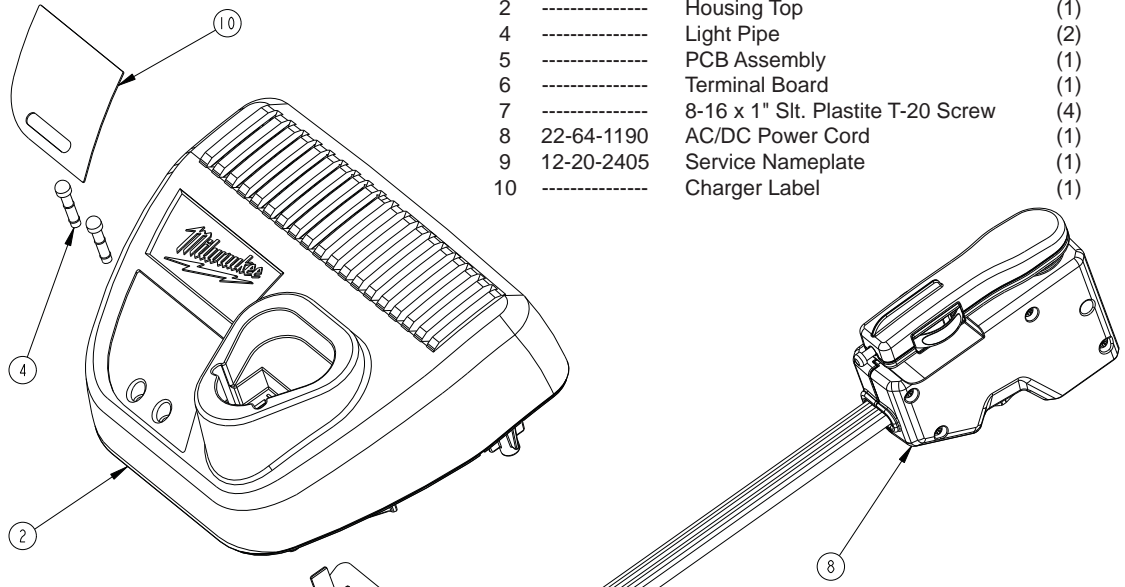
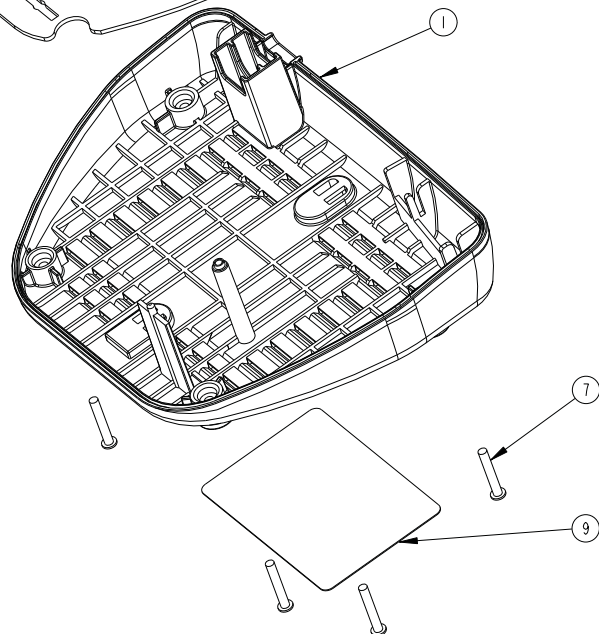
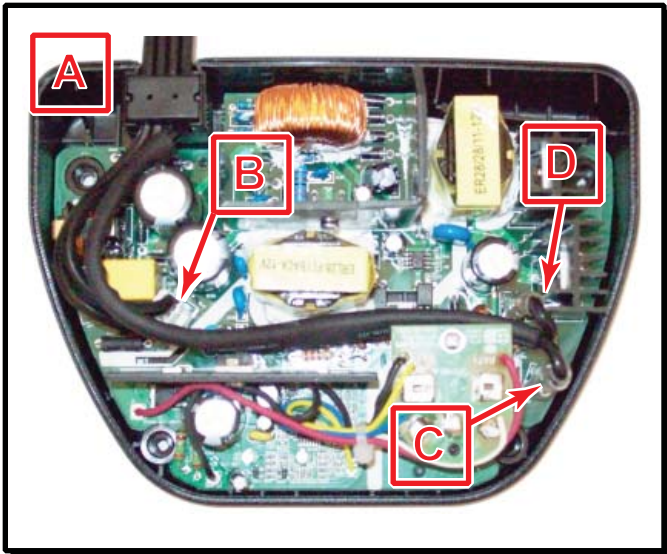


FIG. NOTES

1,9 A clean, dry surface is essential for proper performance for any adhesive system. The area intended for application of any adhesive label or nameplate must be prepared by cleaning with isopropyl alcohol. The solvent is to be applied with a clean, lint free applicator and the surface allowed to dry before applying the label or nameplate.

REPLACING AC/DC POWER CORD:

- Route and connect wires as illustrated below-
- Place molded strain relief block of power cord in rectangular cavity [A] in housing bottom. Seat block completely down.
 - Attach connector block from the two short power cord wires to the pin location on circuit board marked '120 VAC 60Hz' [B].
 - Attach long sleeved wire with larger terminal connector to terminal on circuit board marked '+12V Input' [C].
 - Attach long sleeved wire with smaller terminal connector to terminal marked 'Gnd Input' [D] on circuit board.





SERVICE PARTS LIST

BULLETIN NO.
54-07-2290

SPECIFY CATALOG NO. AND SERIAL NO. WHEN ORDERING PARTS			REVISED BULLETIN
12 VOLT POWER PORT			
CATALOG NO.	2349-20	SERIAL NUMBER	C01A
			WIRING INSTRUCTION

EXAMPLE:
Component Parts (Small #)
Are Included When Ordering
The Assembly (Large #).

00 0

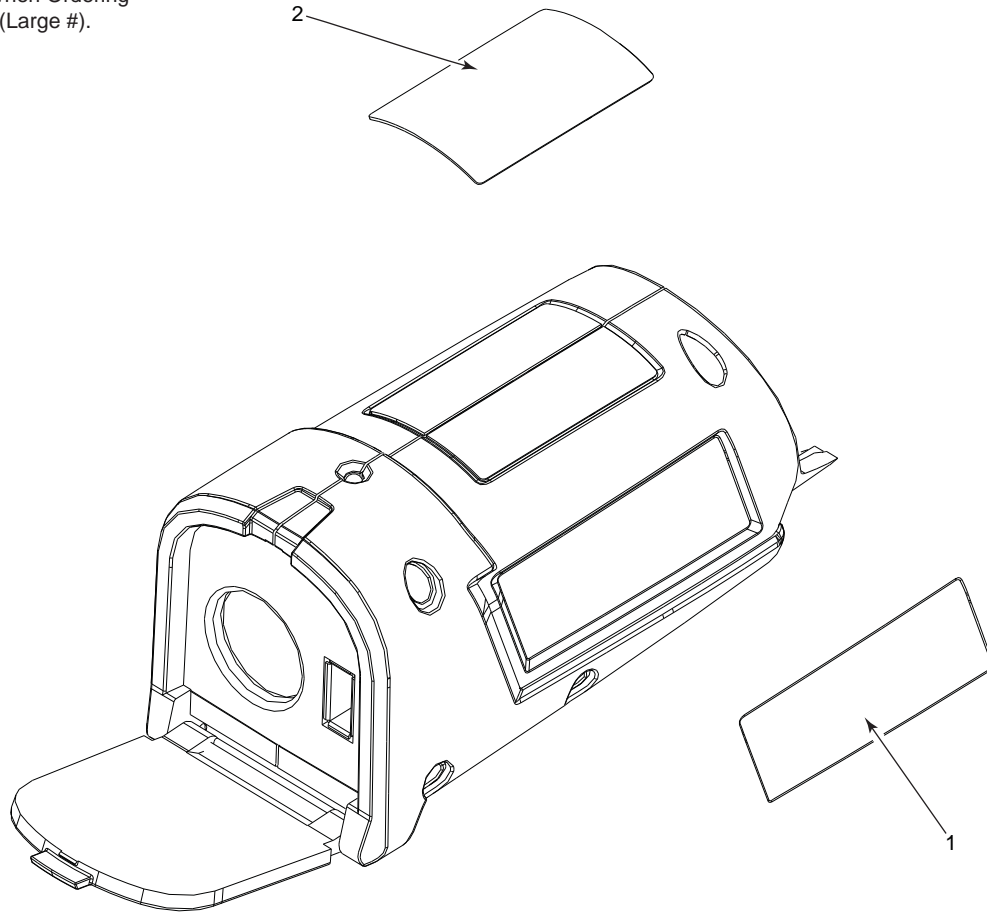


FIG.	PART NO.	DESCRIPTION OF PART	NO. REQ.
1	12-20-2349	Service Nameplate	(1)
2	10-20-1682	Warning Label	(1)

FIG. NOTES
1, 2 A clean, dry surface is essential for proper performance for any adhesive system. The area intended for application of any adhesive label or nameplate must be prepared by cleaning with isopropyl alcohol. The solvent is to be applied with a clean, lint free applicator and the surface allowed to dry before applying the label or name plate.