



SERVICE PARTS LIST

1-1/4" TWO SPEED DRILL

Catalog No. 4292-1

Starting
Serial No. **504-1001**

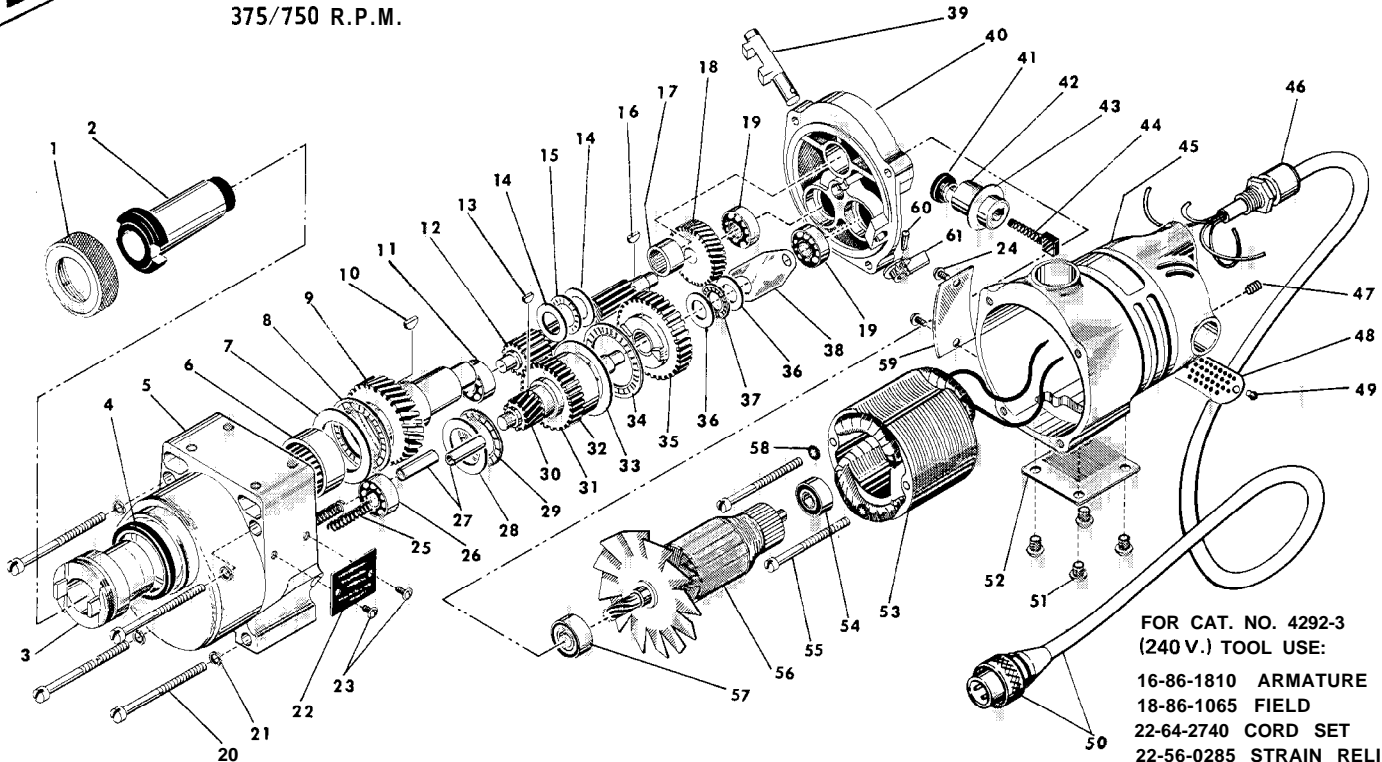
BUL.54-14-4200

REVISED BUL. DATE
June '75

WIRING INSTRUCTIONS
58-01-0371

Specify Catalog and Serial No. when ordering parts

375/750 R.P.M.



FOR CAT. NO. 4292-3
(240 V.) TOOL USE:
16-86-1810 ARMATURE
18-86-1065 FIELD
22-64-2740 CORD SET
22-56-0285 STRAIN RELIEF

FIG.	PART NO.	DESCRIPTION OF PART	NO.REQ.	FIG.	PART NO.	DESCRIPTION OF PART	NO.REQ.
2	45-34-0050 42-52-0050	Taper Socket Cap #3 Taper Socket	(1)	32	32-10-0061	Clutch Gear Assembly	(1)
3	38-50-4651	Spindle	(1)	33	45-88-0530	Thrust Bearing Washer	(1)
4	45-06-0100	Oil Seal	(1)	34	02-80-5000	Thrust Bearing	(1)
5	28-14-1221	Gear Case	(1)	35	32-1 O-0051	Clutch Gear Assembly	(1)
6	02-50-9975	Needle Bearing	(1)	36	45-88-0510	Thrust Bearing Washer	(2)
7	45-88-0530	Thrust Bearing Washer	(1)	37	02-80-1 200	Thrust Bearing	(1)
8	02-80-5000	Thrust Bearing	(1)	38	45-98-0090	Shifting Yoke	(1)
9	32-75-2561	Spindle Gear	(1)	39	30-1 5-0051	Shifting Cam	(1)
10	06-42-2400	Woodruff Key	(1)	40	28-28-1 365	Diaphragm - Includes: Groove Pin	(1)
11	02-04-1 260	Ball Bearing	(1)	41	23-44-0030	Brush Retaining Screw	(2)
12	36-66-3751	Pinion Shaft Assembly	(1)	42	22-22-0015	Brush Holder	(2)
13	06-42-2000	Woodruff Key	(1)	43	23-86-0060	Brush Holder Washer	(2)
14	45-88-0515	Thrust Washer	(2)	44	22-1 8-0055	Carbon Brush	(2)
15	02-80-1 525	Thrust Bearing	(1)	45	28-50-4121	Motor Housing	(1)
16	06-42-1 600	Woodruff Key	(1)	46	22-56-0280	Strain Relief	(1)
17	02-50-4830	Needle Bearing	(1)	47	06-83-2650	1/4-20x3/8 Knr'l. Set Screw	(2)
18	32-40-1 581	Intermediate Gear	(1)	48	44-66-0180	Cover Plate	(1)
19	02-04-1205	Bal I Bearing	(2)	49	06-81-8650	6-32x1/4 Rd. Hd. Sem	(2)
20	06-81-2125	1/4-20x3-1/2 Fil. Hd. Screw	(4)	50	22-64-0740	Cord Set	(1)
21	06-97-3800	Lock Washer	(4)	51	06-81-5000	1/4-20x3/8 Truss Hd. Screw	(4)
22	12-98-2105	Instruction Plate	(1)	52	44-66-0050	Body Cover Plate	(1)
23	06-81-4430	4-40x1/4 Rd. Hd. Screw	(2)	53	18-82-1 070	120 V. Field	(1)
24	06-85-0200	6x1/4 Rd. Hd. Type Z Screw	(2)	54	02-04-1 070	Bal I Bearing	(1)
25	40-50-6300	Shifting Spring	(2)	55	06-81-1 150	1 O-24x3-1/8 Fil. Hd. Screw	(2)
26	02-04-1260	Ball Bearing	(1)	56	16-82-1 781	120 V. Rev. Armature	(1)
27	44-70-0100	Shifting Plunger	(2)	57	02-04-1 265	Ball Bearing	(1)
28	45-88-0520	Thrust Bearing Washer	(1)	58	06-97-2200	Lock Washer	(2)
29	02-80-1 800	Thrust Bearing	(1)	59	12-99-0040	Nameplate	(1)
30	32-60-1 041	Pinion Gear	(1)	60	06-65-0840	1/8x3/4 Groove Pin	(1)
31	36-1 4-0061	Clutch Shaft	(1)	61	28-60-0051	Shift Knob Housing	(1)
				62	12-98-7081	Caution Plate (Not Shown)	(1)



SERVICE PARTS LIST

BULLETIN NO.
54-14-4201

SPECIFY CATALOG NO. AND SERIAL NO. WHEN ORDERING PARTS		REVISED BULLETIN 54-14-4200	DATE May '82
1-1/4" TWO SPEED DRILL		WIRING INSTRUCTION 58-01-0375	
CATALOG NO. 4292-1	STARTING SERIAL NO. 504-3300		
CAT. NO. 4292-6	START SER. NO. 504-3300	BILINGUAL LABEL 10-98-6120	

FOR CAT. NO. 4292-3
(240 V.) TOOL USE:
16-76-0100 ARMATURE
18-76-0070 FIELD
22-64-2740 CORD SET
22-56-0286 STRAIN RELIEF

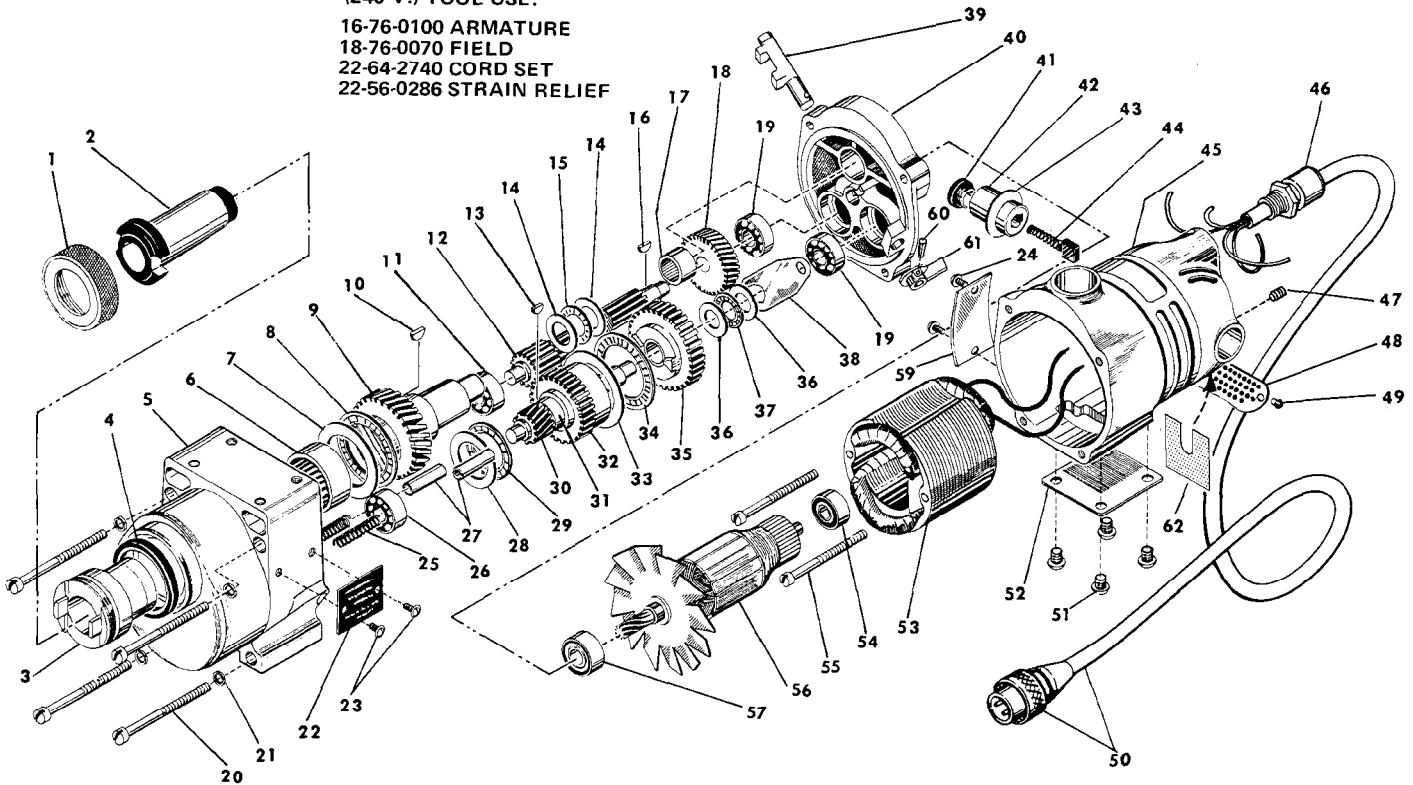


FIG.	PART NO.	DESCRIPTION OF PART	NO. REQ.	FIG.	PART NO.	DESCRIPTION OF PART	NO. REQ.
1	42-52-0050	Taper Socket Cap	(1)	32	32-10-0061	Clutch Gear Assembly	(1)
2	45-34-0050	#3 Taper Socket	(1)	33	45-88-0530	Thrust Bearing Washer	(1)
3	38-50-4651	Spindle	(1)	34	02-80-5000	Thrust Bearing	(1)
4	45-06-0100	Oil Seal	(1)	35	32-10-0051	Clutch Gear Assembly	(1)
5	28-14-1221	Gear Case	(1)	36	45-88-0510	Thrust Bearing Washer	(2)
6	02-50-9975	Needle Bearing	(1)	37	02-80-1200	Thrust Bearing	(1)
7	45-88-0530	Thrust Bearing Washer	(1)	38	45-98-0090	Shifting Yoke	(1)
8	02-80-5000	Thrust Bearing	(1)	39	30-15-0051	Shifting Cam	(1)
9	32-75-2561	Spindle Gear	(1)	40	28-28-1365	Diaphragm - Includes: Groove Pin	(1)
10	06-42-2400	Woodruff Key	(1)	41	23-44-0030	Brush Retaining Screw	(2)
11	02-04-1260	Ball Bearing	(1)	42	22-22-1015	Brush Holder	(2)
12	36-66-3751	Pinion Shaft Assembly	(1)	43	23-86-0060	Brush Holder Washer	(2)
13	06-42-2000	Woodruff Key	(1)	44	22-18-0055	Carbon Brush	(2)
14	45-88-0515	Thrust Washer	(2)	45	28-50-4121	Motor Housing	(1)
15	02-80-1525	Thrust Bearing	(1)	46	22-56-0280	Strain Relief	(1)
16	06-42-1600	Woodruff Key	(1)	47	06-83-2650	1/4-20x3/8 Knrl. Set Screw	(2)
17	02-50-4830	Needle Bearing	(1)	48	44-66-0180	Cover Plate	(1)
18	32-40-1581	Intermediate Gear	(1)	49	06-81-8650	6-32x1/4 Rd. Hd. Sem	(2)
19	02-04-1205	Ball Bearing	(2)	50	22-64-0740	Cord Set	(1)
20	06-81-2125	1/4-20x3-1/2 Fil. Hd. Screw	(4)	51	06-81-5000	1/4-20x3/8 Truss Hd. Screw	(4)
21	06-97-3800	Lock Washer	(4)	52	44-66-0050	Body Cover Plate	(1)
22	12-98-2105	Instruction Plate	(1)	53	18-70-0070	120 V. Field	(1)
23	06-81-4430	4-40x1/4 Rd. Hd. Screw	(2)	54	02-04-1070	Ball Bearing	(1)
24	06-85-0200	6x1/4 Rd. Hd. Type Z Screw	(2)	55	06-81-9190	10-24x2-1/4 Rd. Hd. Sem	(2)
25	40-50-6300	Shifting Spring	(2)	56	16-70-0100	120 V. Rev. Armature	(1)
26	02-04-1260	Ball Bearing	(1)	57	02-04-1260	Ball Bearing	(1)
27	44-70-0100	Shifting Plunger	(2)	58	12-98-7082	Caution Plate (Not Shown)	(1)
28	45-88-0520	Thrust Bearing Washer	(1)	59	12-99-0040	Nameplate	(1)
29	02-80-1800	Thrust Bearing	(1)	60	06-65-0840	1/8x3/4 Groove Pin	(1)
30	32-60-1041	Pinion Gear	(1)	61	28-60-0051	Shift Knob Housing	(1)
31	36-14-0061	Clutch Shaft	(1)	62	23-16-0830	Arc Insulator	(1)

► Omit for Canadian Tools



SERVICE PARTS LIST

BULLETIN NO.
54-14-4202

SPECIFY CATALOG NO. AND SERIAL NO. WHEN ORDERING PARTS		REVISED BULLETIN	DATE
1-1/4" TWO SPEED DRILL		54-14-4201	Sept. '83
CATALOG NO. 4292-1	STARTING SERIAL NO. 504-8500	WIRING INSTRUCTION	
		58-01-0375	
CAT. NO. 4292-6	START SER. NO. 504-8500	BILINGUAL LABEL 10-98-6120	

FOR CAT. NO. 4292-3
(240 V.) TOOL USE:
16-76-0100 ARMATURE
18-76-0070 FIELD
22-64-2740 CORD SET
22-56-0286 STRAIN RELIEF

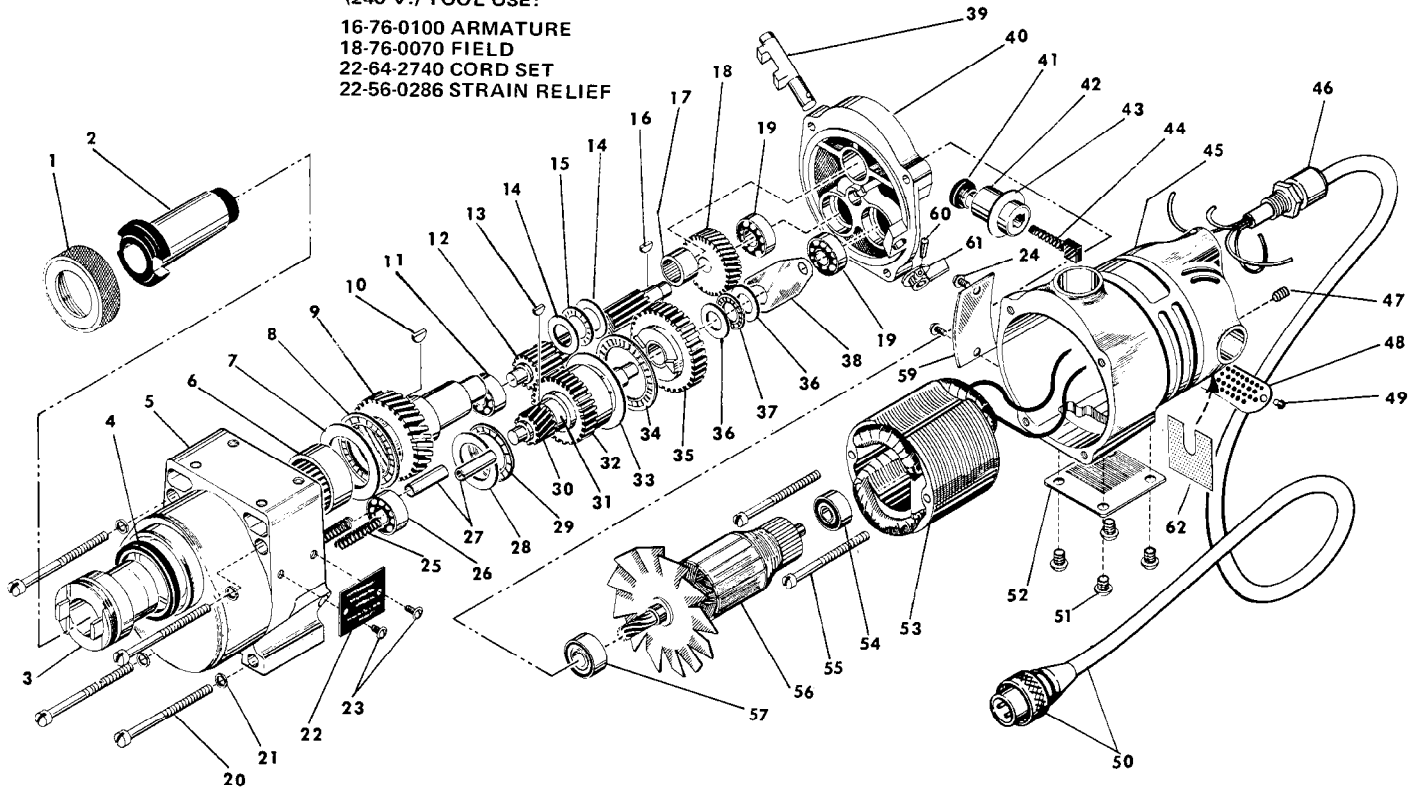


FIG.	PART NO.	DESCRIPTION OF PART	NO. REQ.
1	42-52-0050	Taper Socket Cap	(1)
2	45-34-0050	#3 Taper Socket	(1)
3	38-50-4651	Spindle	(1)
4	45-06-0100	Oil Seal	(1)
★ 5	28-14-1655	Gear Case Assy. (Includes 44-60-0320 Pivot Pin and 06-65-1535 Roll Pin)	(1)
6	02-50-9975	Needle Bearing	(1)
7	45-88-0530	Thrust Bearing Washer	(1)
8	02-80-5000	Thrust Bearing	(1)
9	32-75-2561	Spindle Gear	(1)
10	06-42-2400	Woodruff Key	(1)
11	02-04-1260	Ball Bearing	(1)
12	36-66-3751	Pinion Shaft Assembly	(1)
13	06-42-2000	Woodruff Key	(1)
14	45-88-0515	Thrust Washer	(2)
15	02-80-1525	Thrust Bearing	(1)
16	06-42-1600	Woodruff Key	(1)
17	02-50-4830	Needle Bearing	(1)
18	32-40-1581	Intermediate Gear	(1)
19	02-04-1205	Ball Bearing	(2)
20	06-81-2125	1/4-20x3-1/2 Fil. Hd. Screw	(4)
21	06-97-3800	Lock Washer	(4)
22	12-98-2105	Instruction Plate	(1)
★ 23	06-81-5789	4-40 x 1/4 Pan Hd. Taptite Screw	(2)
24	06-85-0200	6x1/4 Rd. Hd. Type Z Screw	(2)
25	40-50-6300	Shifting Spring	(2)
26	02-04-1260	Ball Bearing	(1)
27	44-70-0100	Shifting Plunger	(2)
28	45-88-0520	Thrust Bearing Washer	(1)
29	02-80-1800	Thrust Bearing	(1)
30	32-60-1041	Pinion Gear	(1)
31	36-14-0061	Clutch Shaft	(1)

FIG.	PART NO.	DESCRIPTION OF PART	NO. REQ.
32	32-10-0061	Clutch Gear Assembly	(1)
33	45-88-0530	Thrust Bearing Washer	(1)
34	02-80-5000	Thrust Bearing	(1)
35	32-10-0051	Clutch Gear Assembly	(1)
36	45-88-0510	Thrust Bearing Washer	(2)
37	02-80-1200	Thrust Bearing	(1)
38	45-98-0090	Shifting Yoke	(1)
★ 39	30-15-0055	Shifting Cam	(1)
40	28-28-1365	Diaphragm - Includes:	
	06-65-0680	Groove Pin	(1)
41	23-44-0030	Brush Retaining Screw	(2)
42	22-22-1015	Brush Holder	(2)
43	23-86-0060	Brush Holder Washer	(2)
44	22-18-0055	Carbon Brush	(2)
45	28-50-4122	Motor Housing (Incl 45-30-0110 BB Rtnng. Slug)	(1)
46	22-56-0280	Strain Relief	(1)
47	06-83-2650	1/4-20x3/8 Knrl. Set Screw	(2)
48	44-66-0180	Cover Plate	(1)
49	06-81-8650	6-32x1/4 Rd. Hd. Sem	(2)
50	22-64-0740	Cord Set	(1)
51	06-81-5000	1/4-20x3/8 Truss Hd. Screw	(4)
52	44-66-0050	Body Cover Plate	(1)
53	18-70-0070	120 V. Field	(1)
54	02-04-1070	Ball Bearing	(1)
55	06-81-9190	10-24x2-1/4 Rd. Hd. Sem	(2)
56	16-70-0100	120 V. Rev. Armature	(1)
57	02-04-1260	Ball Bearing	(1)
▶ 58	12-98-7082	Caution Plate (Not Shown)	(1)
59	12-99-0040	Nameplate	(1)
60	06-65-0840	1/8x3/4 Groove Pin	(1)
★ 61	28-60-0056	Shift Knob	(1)
62	23-16-0835	Arc Insulator	(1)

▶ Omit for Canadian Tools



SERVICE PARTS LIST

BULLETIN NO.
54-14-4203

SPECIFY CATALOG NO. AND SERIAL NO. WHEN ORDERING PARTS		REVISED BULLETIN 54-14-4202	DATE Aug. '87
1-1/4" TWO SPEED DRILL			
CATALOG NO. 4292-1	STARTING SERIAL NO. 504-10560	WIRING INSTRUCTION 58-01-0375	
CAT. NO.	START SER. NO.	BILINGUAL LABEL	

FOR CAT. NO. 4292-3
(240 V.) TOOL USE:
16-76-0100 ARMATURE
18-76-0070 FIELD
22-64-2740 CORD SET
22-56-0286 STRAIN RELIEF

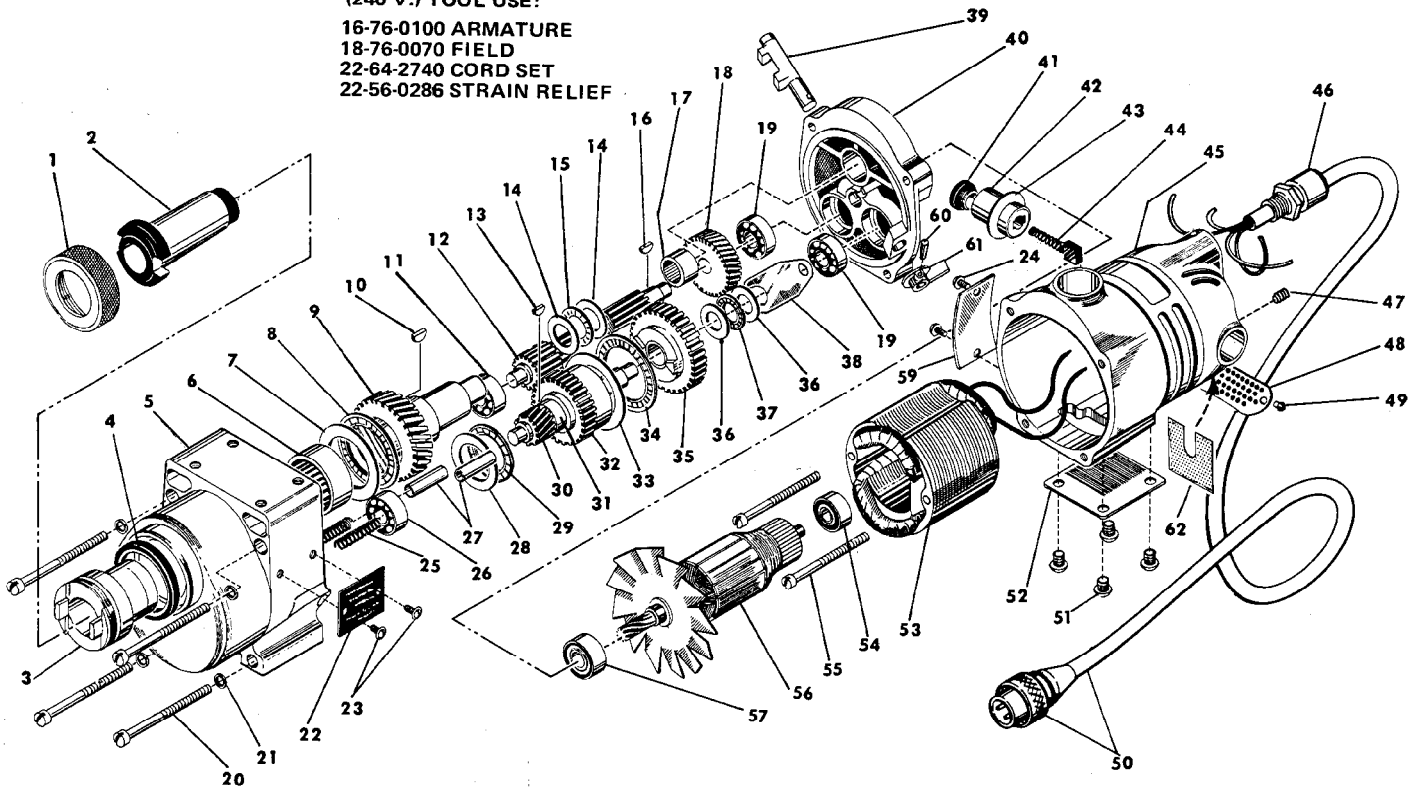


FIG.	PART NO.	DESCRIPTION OF PART	NO. REQ.	FIG.	PART NO.	DESCRIPTION OF PART	NO. REQ.
	1	42-52-0050 Taper Socket Cap	(1)	32	32-10-0061	Clutch Gear Assembly	(1)
	2	45-34-0050 #3 Taper Socket	(1)	33	45-88-0530	Thrust Bearing Washer	(1)
★	3	38-50-5490 Spindle	(1)	34	02-80-5000	Thrust Bearing	(1)
★	4	45-06-0380 Oil Seal	(1)	35	32-10-0051	Clutch Gear Assembly	(1)
★	5	28-14-1880 Gear Case Assy. (Includes 44-60-0320 Pivot Pin and 06-65-1535 Roll Pin)	(1)	36	45-88-0510	Thrust Bearing Washer	(2)
★	6	02-50-9970 Needle Bearing	(1)	37	02-80-1200	Thrust Bearing	(1)
	7	45-88-0530 Thrust Bearing Washer	(1)	38	45-98-0090	Shifting Yoke	(1)
	8	02-80-5000 Thrust Bearing	(1)	39	30-15-0055	Shifting Cam	(1)
	9	32-75-2561 Spindle Gear	(1)	40	28-28-1365	Diaphragm - Includes: Groove Pin	(1)
	10	06-42-2400 Woodruff Key	(1)	41	23-44-0030	Brush Retaining Screw	(2)
★	11	02-04-1205 Ball Bearing	(1)	42	22-22-1015	Brush Holder	(2)
	12	36-66-3751 Pinion Shaft Assembly	(1)	43	23-86-0060	Brush Holder Washer	(2)
	13	06-42-2000 Woodruff Key	(1)	44	22-18-0055	Carbon Brush	(2)
	14	45-88-0515 Thrust Washer	(2)	45	28-50-4122	Motor Housing (Incl 45-30-0110 BB Rtnng. Slug)	(1)
	15	02-80-1525 Thrust Bearing	(1)	46	22-56-0280	Strain Relief	(1)
	16	06-42-1600 Woodruff Key	(1)	47	06-83-2650	1/4-20x3/8 Knrl. Set Screw	(2)
	17	02-50-4830 Needle Bearing	(1)	48	44-66-0180	Cover Plate	(1)
	18	32-40-1581 Intermediate Gear	(1)	49	06-81-8650	6-32x1/4 Rd. Hd. Sem	(2)
	19	02-04-1205 Ball Bearing	(2)	50	22-64-0740	Cord Set	(1)
	20	06-81-2125 1/4-20x3-1/2 Fil. Hd. Screw	(4)	51	06-81-5000	1/4-20x3/8 Truss Hd. Screw	(4)
	21	06-97-3800 Lock Washer	(4)	52	44-66-0050	Body Cover Plate	(1)
	22	12-98-2105 Instruction Plate	(1)	53	18-70-0070	120 V. Field	(1)
	23	06-81-5789 4-40 x 1/4 Pan Hd. Taptite Screw	(2)	54	02-04-1070	Ball Bearing	(1)
	24	06-85-0200 6x1/4 Rd. Hd. Type Z Screw	(2)	55	06-81-9190	10-24x2-1/4 Rd. Hd. Sem	(2)
	25	40-50-6300 Shifting Spring	(2)	56	16-70-0100	120 V. Rev. Armature	(1)
★	26	02-04-1205 Ball Bearing	(1)	57	02-04-1260	Ball Bearing	(1)
	27	44-70-0100 Shifting Plunger	(2)	58	12-98-7082	Caution Plate (Not Shown)	(1)
	28	45-88-0520 Thrust Bearing Washer	(1)	59	12-99-0040	Nameplate	(1)
	29	02-80-1800 Thrust Bearing	(1)	60	06-65-0840	1/8x3/4 Groove Pin	(1)
	30	32-60-1041 Pinion Gear	(1)	61	28-60-0056	Shift Knob	(1)
	31	36-14-0061 Clutch Shaft	(1)	62	23-16-0830	Arc Insulator	(1)



SERVICE PARTS LIST

BULLETIN NO.
54-14-4204

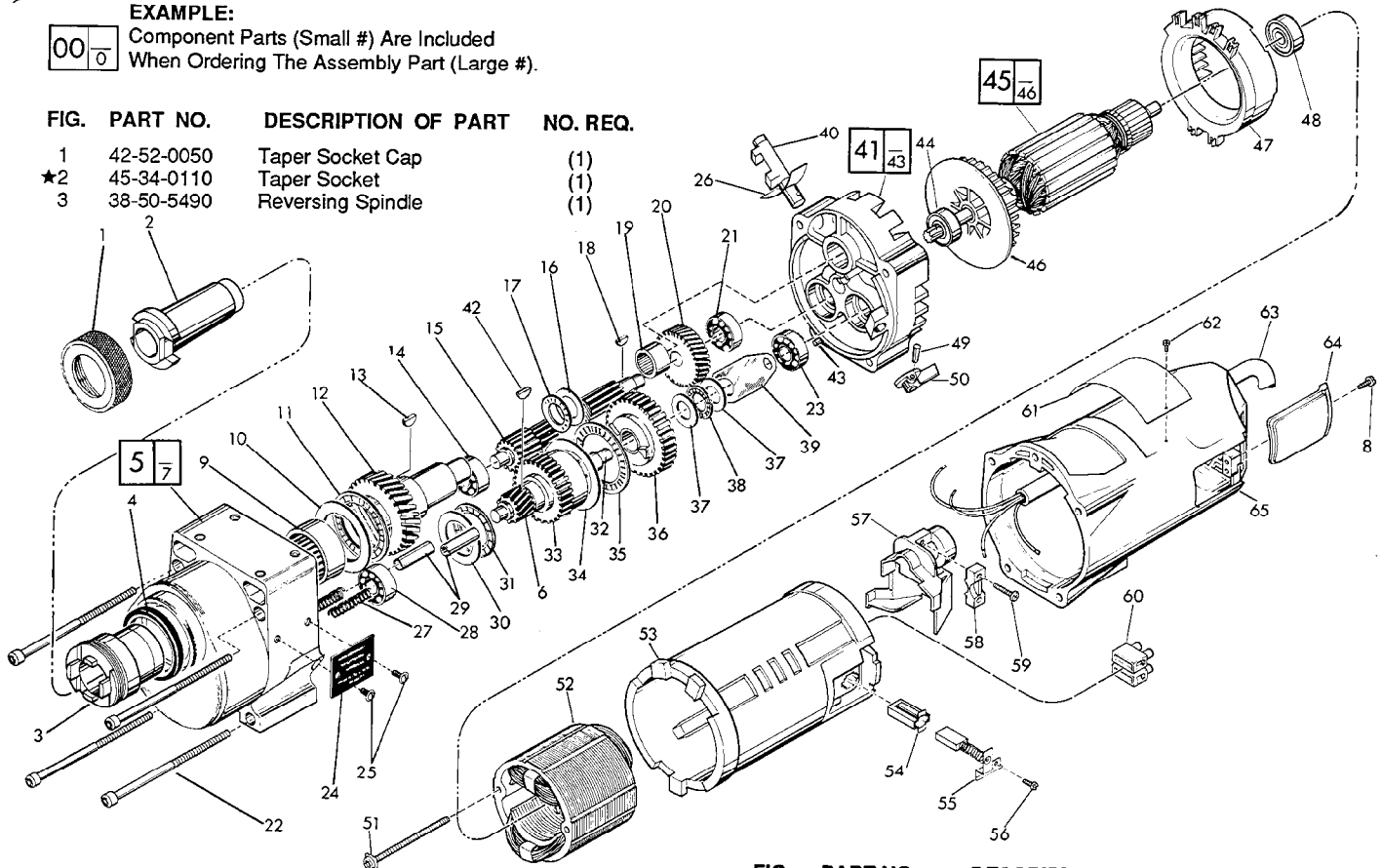
SPECIFY CATALOG NO. AND SERIAL NO. WHEN ORDERING PARTS		REVISED BULLETIN 54-14-4203	DATE Aug. '87
1-1/4" TWO SPEED DRILL		WIRING INSTRUCTION 58-01-0376	
CATALOG NO. 4292-1	STARTING SERIAL NO. 504-11000		

EXAMPLE:

00	0
----	---

 Component Parts (Small #) Are Included
 When Ordering The Assembly Part (Large #).

FIG.	PART NO.	DESCRIPTION OF PART	NO. REQ.
1	42-52-0050	Taper Socket Cap	(1)
★2	45-34-0110	Taper Socket	(1)
3	38-50-5490	Reversing Spindle	(1)



4	45-06-0380	Oil Seal	(1)
5	28-14-1880	Gear Case Assembly	(1)
6	32-60-1041	Pinion Gear	(1)
7	06-65-1535	Roll Pin (Not Shown)	(1)
★8	06-82-7252	8-32x3/8" Pan Slit. Taptite Torx	(2)
9	02-50-9970	Needle Bearing	(1)
10	45-88-0530	Thrust Bearing Washer	(1)
11	02-80-5000	Thrust Bearing	(1)
12	32-75-2561	Spindle Gear	(1)
13	06-42-2400	Woodruff Key	(1)
14	02-04-1205	Ball Bearing	(1)
15	36-66-3751	Pinion Shaft Assembly	(1)
16	45-88-0515	Thrust Washer	(1)
17	02-80-1525	Thrust Bearing	(1)
18	06-42-1600	Woodruff Key	(1)
19	02-50-4830	Needle Bearing	(1)
20	32-40-1581	Intermediate Gear	(1)
21	02-04-1205	Ball Bearing	(1)
★22	06-82-9202	1/4-20x4-1/4" Pan Hd. Taptite Torx	(4)
23	02-04-1205	Ball Bearing	(1)
24	12-98-2105	Instruction Plate	(1)
★25	06-82-5266	4-40x1/4" Pan Hd. Taptite Screw	(2)
★26	45-06-0350	Gear Case Seal	(1)
27	40-50-6300	Shifting Spring	(2)
28	02-04-1205	Ball Bearing	(1)
29	44-70-0100	Shifting Plunger	(2)
30	45-88-0520	Thrust Bearing Washer	(1)
31	02-80-1800	Thrust Bearing	(1)
32	36-14-0061	Pinion Clutch Shaft	(1)
33	32-10-0061	Clutch Gear Assembly	(1)
34	45-88-0530	Thrust Bearing Washer	(1)
35	02-80-5000	Thrust Bearing	(1)
36	32-10-0051	Clutch Gear Assembly	(1)
37	45-88-0510	Thrust Bearing Washer	(2)
38	02-80-1200	Thrust Bearing	(1)
39	45-98-0090	Shifting Yoke	(1)

40	30-15-0055	Shifting Cam	(1)
★41	14-13-0210	Diaphragm Assembly	(1)
42	06-42-2000	Woodruff Key	(1)
★43	06-65-1155	Groove Pin	(1)
★44	02-04-1229	Ball Bearing	(1)
★45	16-70-0375	120 V. D. I. Armature	(1)
★46	22-84-0790	Fan	(1)
★47	42-14-0291	Baffle	(1)
★48	02-04-1041	Ball Bearing	(1)
49	06-65-0840	1/8x3/4 Groove Pin	(1)
50	28-60-0056	Shifting Knob	(1)
★51	06-82-9072	10-24x2-1/8" Pan Sems Torx	(2)
★52	18-70-0320	120 V. Field	(1)
★53	23-16-1410	Insulating Housing	(1)
★54	22-20-0680	Brush Tube	(2)
★55	22-18-0700	Carbon Brush Assembly	(2)
★56	06-82-8835	8-32x5/16" Pan Sems Torx	(2)
★57	22-38-0140	Wire Clamp	(1)
★58	31-17-0200	Cord Clamp	(1)
★59	06-82-7326	8-16x1" Pan Plast. Slit. Torx	(2)
★60	22-56-0470	Terminal Block	(1)
★61	12-15-9040	Nameplate	(1)
62	06-85-0200	Nameplate Screw	(2)
★63	22-64-3050	120 V. Cord and Plug	(1)
★64	22-32-0350	Brush Cover	(2)
★65	28-50-6360	Motor Housing	(1)

FIG. LUBRICATION
 5 12 Oz. Type "E" Grease No. 49-08-4121.
FIG. NOTES
 22 Apply Blue Loctite To Threads.



SERVICE PARTS LIST

BULLETIN NO.
54-14-4205

SPECIFY CATALOG NO. AND SERIAL NO. WHEN ORDERING PARTS

REVISED BULLETIN

DATE

1-1/4" TWO SPEED DRILL

54-14-4204

April'88

CATALOG NO. 4292-1

STARTING SERIAL NO. 504-12100

WIRING INSTRUCTION

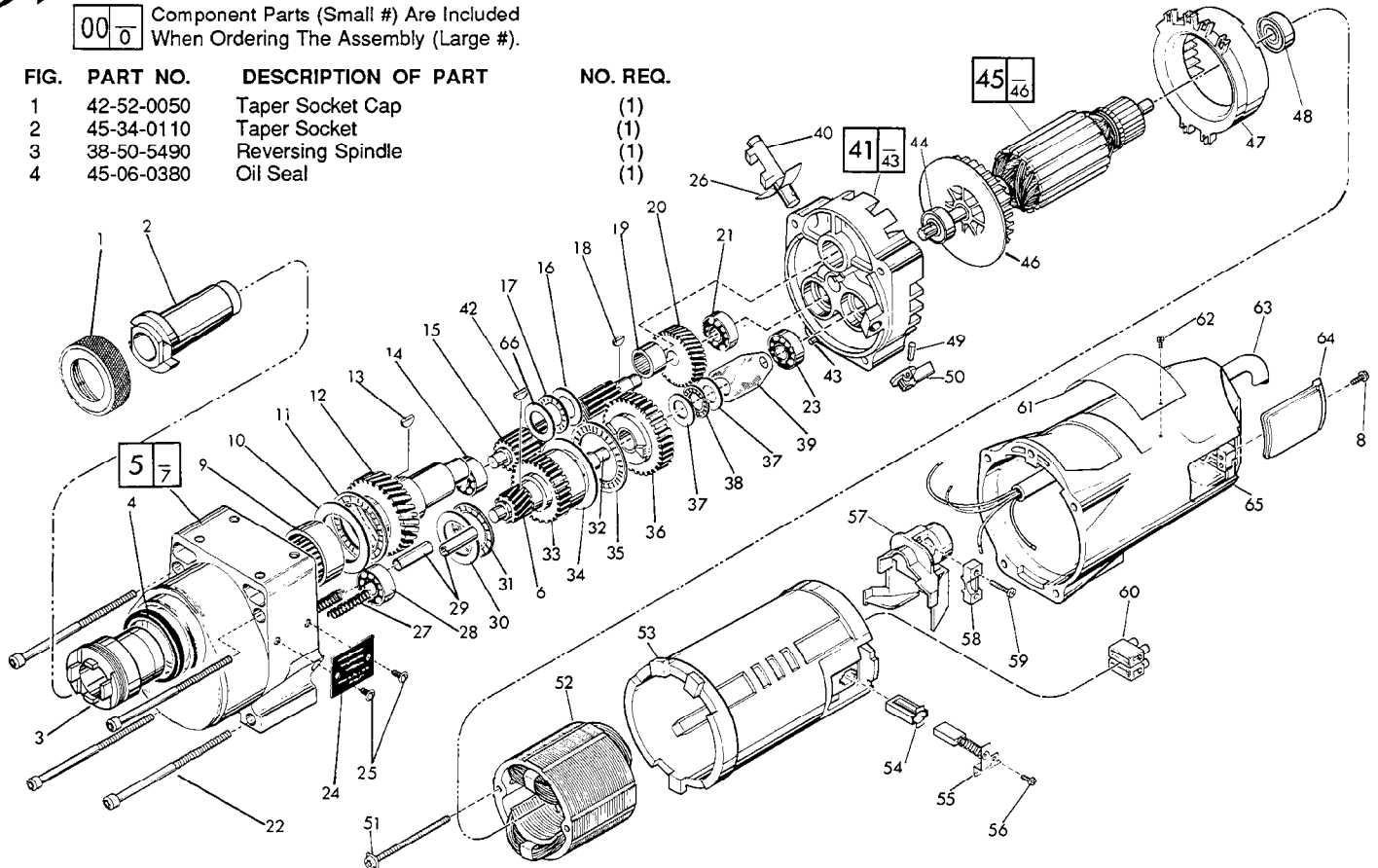
58-01-0376

EXAMPLE:

00 0

Component Parts (Small #) Are Included
When Ordering The Assembly (Large #).

FIG.	PART NO.	DESCRIPTION OF PART	NO. REQ.
1	42-52-0050	Taper Socket Cap	(1)
2	45-34-0110	Taper Socket	(1)
3	38-50-5490	Reversing Spindle	(1)
4	45-06-0380	Oil Seal	(1)



5	28-14-1880	Gear Case Assembly	(1)
6	32-60-1041	Pinion Gear	(1)
7	06-65-1535	Roll Pin (Not Shown)	(1)
8	06-82-7252	8-32x3/8" Pan Slit. Taptite Torx	(2)
9	02-50-9970	Needle Bearing	(1)
10	45-88-0530	Thrust Bearing Washer	(1)
11	02-80-5000	Thrust Bearing	(1)
12	32-75-2561	Spindle Gear	(1)
13	06-42-2400	Woodruff Key	(1)
14	02-04-1205	Ball Bearing	(1)
15	36-66-3751	Pinion Shaft Assembly	(1)
★ 16	45-88-1090	Thrust Washer	(1)
17	02-80-1525	Thrust Bearing	(1)
18	06-42-1600	Woodruff Key	(1)
19	02-50-4830	Needle Bearing	(1)
20	32-40-1581	Intermediate Gear	(1)
21	02-04-1205	Ball Bearing	(1)
22	06-82-9202	1/4-20x4-1/4" Pan Hd. Taptite Torx Scr.	(4)
23	02-04-1205	Ball Bearing	(1)
24	12-98-2105	Instruction Plate	(1)
25	06-82-5266	4-40x1/4" Pan Hd. Taptite Screw	(2)
26	45-06-0350	Gear Case Seal	(1)
27	40-50-6300	Shifting Spring	(2)
28	02-04-1205	Ball Bearing	(1)
29	44-70-0100	Shifting Plunger	(2)
30	45-88-0520	Thrust Bearing Washer	(1)
31	02-80-1800	Thrust Bearing	(1)
32	36-14-0061	Pinion Clutch Shaft	(1)
33	32-10-0061	Clutch Gear Assembly	(1)
34	45-88-0530	Thrust Bearing Washer	(1)
35	02-80-5000	Thrust Bearing	(1)
36	32-10-0051	Clutch Gear Assembly	(1)
37	45-88-0510	Thrust Bearing Washer	(1)
38	02-80-1200	Thrust Bearing	(1)
39	45-98-0090	Shifting Yoke	(1)

FIG.	PART NO.	DESCRIPTION OF PART	NO. REQ.
★ 40	30-15-0056	Shifting Cam	(1)
41	14-13-0210	Diaphragm Assembly	(1)
42	06-42-2000	Woodruff Key	(1)
43	06-65-1155	Groove Pin	(1)
44	02-04-1229	Ball Bearing	(1)
45	16-70-0375	120 V. D. I. Armature	(1)
46	22-84-0790	Fan	(1)
47	42-14-0291	Baffle	(1)
48	02-04-1041	Ball Bearing	(1)
49	06-65-0840	1/8x3/4 Groove Pin	(1)
50	28-60-0056	Shifting Knob	(1)
51	06-82-9072	10-24x2-1/8" Pan Sems Torx Screw	(2)
52	18-70-0320	120 V. Field	(1)
53	23-16-1410	Insulating Housing	(1)
54	22-20-0680	Brush Tube	(2)
★ 55	22-18-0701	Carbon Brush Assembly	(2)
56	06-82-8835	8-32x5/16" Pan Sems Torx Screw	(2)
57	22-38-0140	Wire Clamp	(1)
58	31-17-0200	Cord Clamp	(1)
59	06-82-7326	8-16x1" Pan Plast. Slit. Torx	(2)
60	22-56-0470	Terminal Block	(1)
61	12-15-9040	Nameplate	(1)
62	06-85-0200	Nameplate Screw	(2)
63	22-64-3050	120 V. Cord and Plug	(1)
64	22-32-0350	Brush Cover	(2)
65	28-50-6360	Motor Housing	(1)
★ 66	45-88-1080	Thrust Washer	(1)

FIG. LUBRICATION

5 12 Oz. Type "E" Grease, No. 49-08-4121.

FIG. NOTES

22 Apply Blue Loctite To Threads.



SERVICE PARTS LIST

BULLETIN NO.
54-14-4206

SPECIFY CATALOG NO. AND SERIAL NO. WHEN ORDERING PARTS		REVISED BULLETIN	DATE
1-1/4" TWO SPEED DRILL		54-14-4205	Mar.'94
CATALOG NO. 4292-1	STARTING SERIAL NO. 504A	WIRING INSTRUCTION 58-01-0376	

EXAMPLE:

00 Component Parts (Small #) Are Included
0 When Ordering The Assembly (Large #).

FIG.	PART NO.	DESCRIPTION OF PART	NO. REQ.
1	42-52-0050	Taper Socket Cap	(1)
2	45-34-0110	Taper Socket	(1)
3	38-50-5490	Reversing Spindle	(1)
4	45-06-0380	Oil Seal	(1)

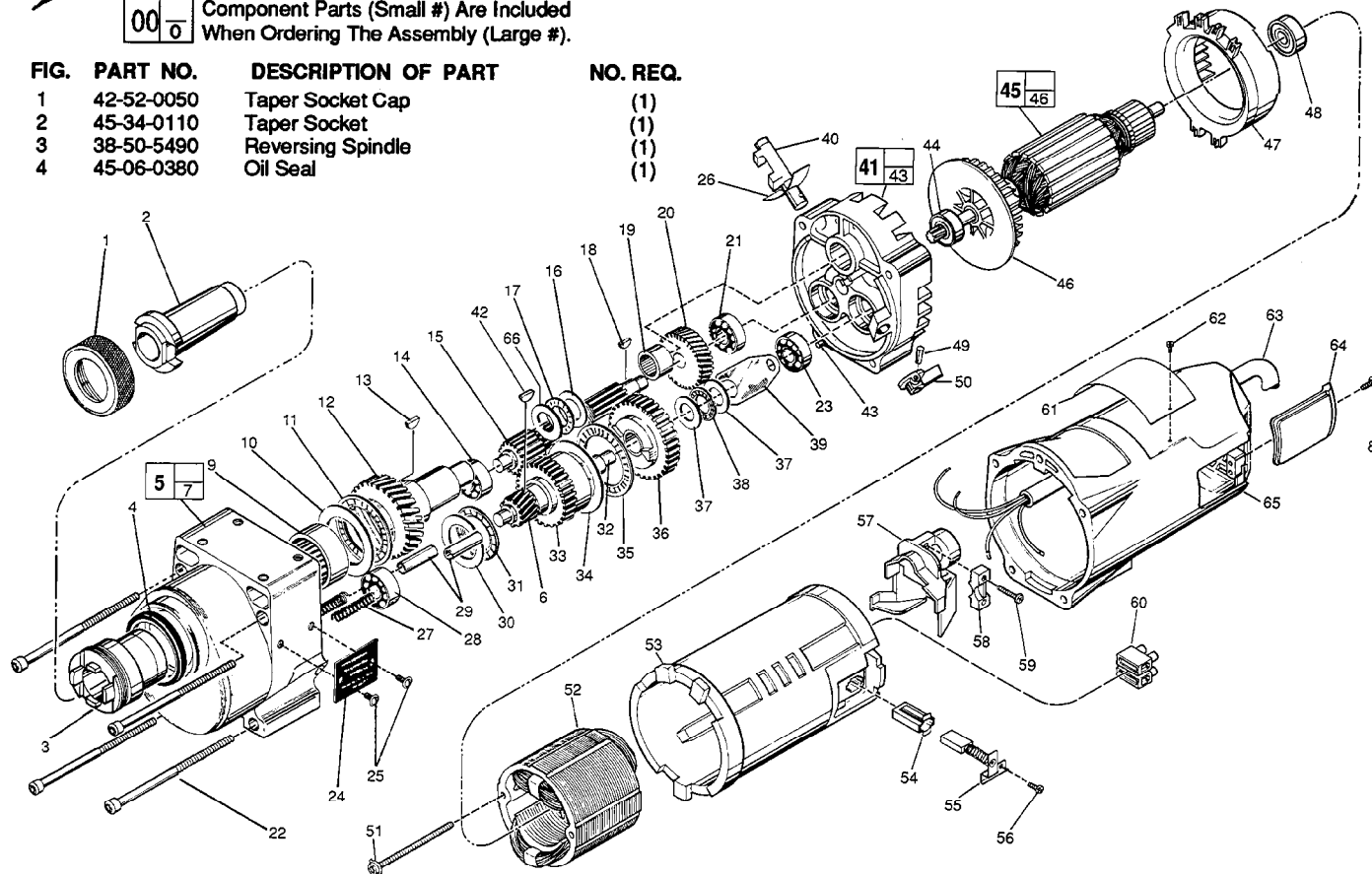


FIG.	PART NO.	DESCRIPTION OF PART	NO. REQ.
5	28-14-1880	Gear Case Assembly	(1)
6	32-60-1041	Pinion Gear	(1)
7	06-65-1535	Roll Pin (Not Shown)	(1)
★ 8	06-82-5316	8-32 x 1/2" Pan Hd. Slit. Taptite T-20	(2)
★ 9	02-50-9976	Needle Bearing	(1)
10	45-88-0530	Thrust Bearing Washer	(1)
11	02-80-5000	Thrust Bearing	(1)
12	32-75-2561	Spindle Gear	(1)
13	06-42-2400	Woodruff Key	(1)
14	02-04-1205	Ball Bearing	(1)
15	36-66-3751	Pinion Shaft Assembly	(1)
16	45-88-1090	Thrust Washer	(1)
17	02-80-1525	Thrust Bearing	(1)
18	06-42-1600	Woodruff Key	(1)
19	02-50-4830	Needle Bearing	(1)
20	32-40-1581	Intermediate Gear	(1)
21	02-04-1205	Ball Bearing	(1)
22	06-82-9202	1/4-20 x 4-1/4" Fillister Taptite T-30	(4)
23	02-04-1205	Ball Bearing	(1)
24	12-98-2105	Instruction Plate	(1)
25	06-82-5266	4-40 x 1/4" Pan Hd. Taptite T-10 Screw	(2)
26	45-06-0350	Gear Case Seal	(1)
27	40-50-6300	Shifting Spring	(2)
28	02-04-1205	Ball Bearing	(1)
29	44-70-0100	Shifting Plunger	(2)
30	45-88-0520	Thrust Bearing Washer	(1)
31	02-80-1800	Thrust Bearing	(1)
32	36-14-0061	Pinion Clutch Shaft	(1)
33	32-10-0061	Clutch Gear Assembly	(1)
34	45-88-0530	Thrust Bearing Washer	(1)
35	02-80-5000	Thrust Bearing	(1)
36	32-10-0051	Clutch Gear Assembly	(1)
37	45-88-0510	Thrust Bearing Washer	(1)
38	02-80-1200	Thrust Bearing	(1)
39	45-98-0090	Shifting Yoke	(1)

FIG.	PART NO.	DESCRIPTION OF PART	NO. REQ.
40	30-15-0056	Shifting Cam	(1)
41	14-13-0210	Diaphragm Assembly	(1)
42	06-42-2000	Woodruff Key	(1)
43	06-65-1155	Groove Pin	(1)
44	02-04-1229	Ball Bearing	(1)
45	16-70-0375	120 V. D. I. Armature	(1)
46	22-84-0790	Fan	(1)
47	42-14-0291	Baffle	(1)
48	02-04-1041	Ball Bearing	(1)
49	06-65-0840	1/8 x 3/4 Groove Pin	(1)
★ 50	25-60-0056	Shifting Knob	(1)
51	06-82-9072	10-24 x 2-1/8" Pan Hd. T-25 Sems	(2)
52	18-70-0320	120 V. Field	(1)
53	23-16-1410	Insulating Housing	(1)
54	22-20-0680	Brush Tube	(2)
55	22-18-0701	Carbon Brush Assembly	(2)
56	06-82-8835	8-32 x 5/16" Pan Hd. T-20 Sems	(2)
57	22-38-0140	Wire Clamp	(1)
58	31-17-0200	Cord Clamp	(1)
59	06-82-7326	8-16 x 1" Pan Hd. Slit. Plast. T-20	(2)
60	22-56-0470	Terminal Block	(1)
★ 61	12-99-1300	Service Nameplate	(1)
★ 62	06-72-0720	Nameplate Rivet	(2)
63	22-64-3050	120 V. Cord and Plug	(1)
64	22-32-0350	Brush Cover	(2)
65	28-50-6360	Motor Housing	(1)
66	45-88-1080	Thrust Washer	(1)

FIG. LUBRICATION

★ 5 17 Oz. Type "J" Grease, No. 49-08-4220.

FIG. NOTES

22 Apply Blue Loctite To Threads.



SERVICE PARTS LIST

BULLETIN NO.
54-14-4207

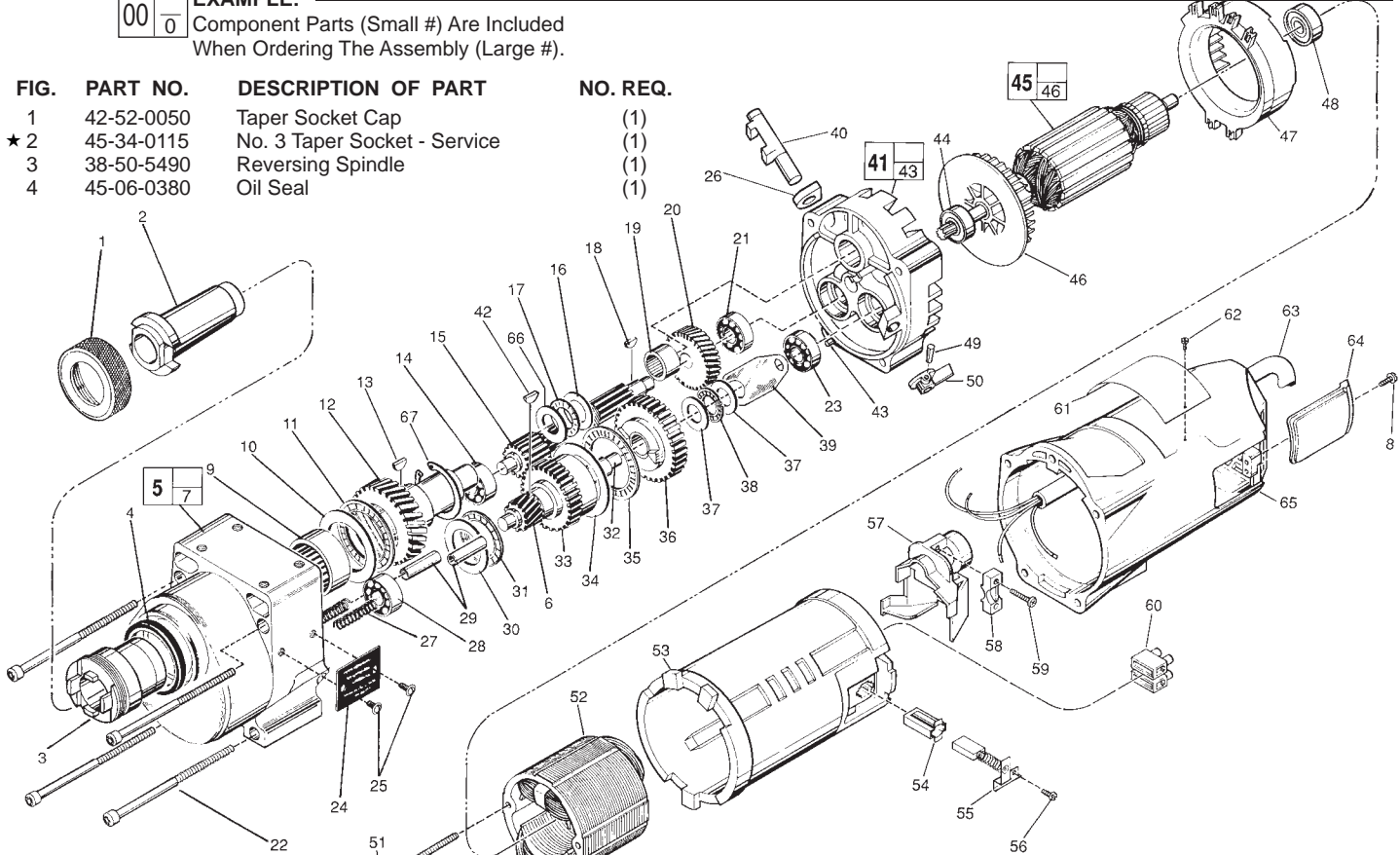
SPECIFY CATALOG NO. AND SERIAL NO. WHEN ORDERING PARTS		REVISED BULLETIN 54-14-4206	DATE July 2011
1-1/4" TWO SPEED DRILL			
CATALOG NO.	4292-1	STARTING SERIAL NO.	504B
		WIRING INSTRUCTION 58-01-0376	

EXAMPLE:

00	0
----	---

 Component Parts (Small #) Are Included
 When Ordering The Assembly (Large #).

FIG.	PART NO.	DESCRIPTION OF PART	NO. REQ.
	42-52-0050	Taper Socket Cap	(1)
★ 2	45-34-0115	No. 3 Taper Socket - Service	(1)
3	38-50-5490	Reversing Spindle	(1)
4	45-06-0380	Oil Seal	(1)



5	28-14-1880	Gear Case Assembly	(1)
6	32-60-1041	Pinion Gear	(1)
7	06-65-1535	Roll Pin (Not Shown)	(1)
8	06-82-5316	8-32 x 1/2" Pan Hd. Slit. Taptite T-20	(2)
9	02-50-9976	Needle Bearing	(1)
10	45-88-0530	Thrust Bearing Washer	(1)
11	02-80-5000	Thrust Bearing	(1)
12	32-75-2561	Spindle Gear	(1)
13	06-42-2400	Woodruff Key	(1)
14	02-04-1205	Ball Bearing	(1)
15	36-66-3751	Pinion Shaft Assembly	(1)
16	45-88-1090	Thrust Washer	(1)
17	02-80-1525	Thrust Bearing	(1)
18	06-42-1600	Woodruff Key	(1)
19	02-50-4830	Needle Bearing	(1)
20	32-40-1581	Intermediate Gear	(1)
21	02-04-1205	Ball Bearing	(1)
22	06-82-9202	1/4-20 x 4-1/4" Fillister Taptite T-30	(4)
23	02-04-1205	Ball Bearing	(1)
24	12-98-2105	Instruction Plate	(1)
25	06-82-5266	4-40 x 1/4" Pan Hd. Taptite T-10 Screw	(2)
★ 26	43-44-0580	Foam Gasket	(1)
27	40-50-6300	Shifting Spring	(2)
28	02-04-1205	Ball Bearing	(1)
29	44-70-0100	Shifting Plunger	(2)
30	45-88-0520	Thrust Bearing Washer	(1)
31	02-80-1800	Thrust Bearing	(1)
32	36-14-0061	Pinion Clutch Shaft	(1)
★ 33	14-29-0055	Gear Kit (Contains Gear and Spacer)	(1)
34	45-88-0530	Thrust Bearing Washer	(1)
35	02-80-5000	Thrust Bearing	(1)
36	32-10-0051	Clutch Gear Assembly	(1)
37	45-88-0510	Thrust Bearing Washer	(1)
38	02-80-1200	Thrust Bearing	(1)
39	45-98-0090	Shifting Yoke	(1)
40	30-15-0056	Shifting Cam	(1)

FIG. 41	14-13-0210	Diaphragm Assembly	(1)
42	06-42-2000	Woodruff Key	(1)
43	06-65-1155	Groove Pin	(1)
44	02-04-1229	Ball Bearing	(1)
45	16-70-0375	120 V. D. I. Armature	(1)
46	22-84-0790	Fan	(1)
47	42-14-0291	Baffle	(1)
48	02-04-1041	Ball Bearing	(1)
49	06-65-0840	1/8 x 3/4 Groove Pin	(1)
50	25-60-0056	Shifting Knob	(1)
51	06-82-9072	10-24 x 2-1/8" Pan Hd. T-25 Sems	(2)
52	18-70-0320	120 V. Field	(1)
53	23-16-1410	Insulating Housing	(1)
54	22-20-0680	Brush Tube	(2)
55	22-18-0701	Carbon Brush Assembly	(2)
56	06-82-8835	8-32 x 5/16" Pan Hd. T-20 Sems	(2)
57	22-38-0140	Wire Clamp	(1)
58	31-17-0200	Cord Clamp	(1)
59	06-82-7326	8-16 x 1" Pan Hd. Slit. Plast. T-20	(2)
60	22-56-0470	Terminal Block	(1)
61	12-99-1300	Service Nameplate	(1)
62	06-72-1720	Nameplate Rivet	(2)
63	22-64-3050	120 V. Cord and Plug	(1)
64	22-32-0350	Brush Cover	(2)
65	28-50-6360	Motor Housing	(1)
66	45-88-1080	Thrust Washer	(1)
★ 67	34-60-0320	Snap Ring	(1)

FIG. LUBRICATION
 5 17 Oz. Type "J" Grease, No. 49-08-4220.
FIG. NOTES
 22 Apply Blue Loctite To Threads.



SERVICE PARTS LIST

1-1/4" TWO SPEED DRILL

Catalog No. 4297-1

Starting Serial No. **505-1001**

Specify Catalog and Serial No. when ordering parts

BUL. 54-14-4300

REVISED BUL. DATE
June '75

WIRING INSTRUCTIONS
58-01-0371

FOR CAT. NO. 4297-3 (240V) TOOLS USE:

- 18-86-1065 FIELD
- 16-86-1810 ARMATURE
- 22-64-2740 CORD SET
- 22-56-0285 STRAIN RELIEF

250/500 R.P.M.

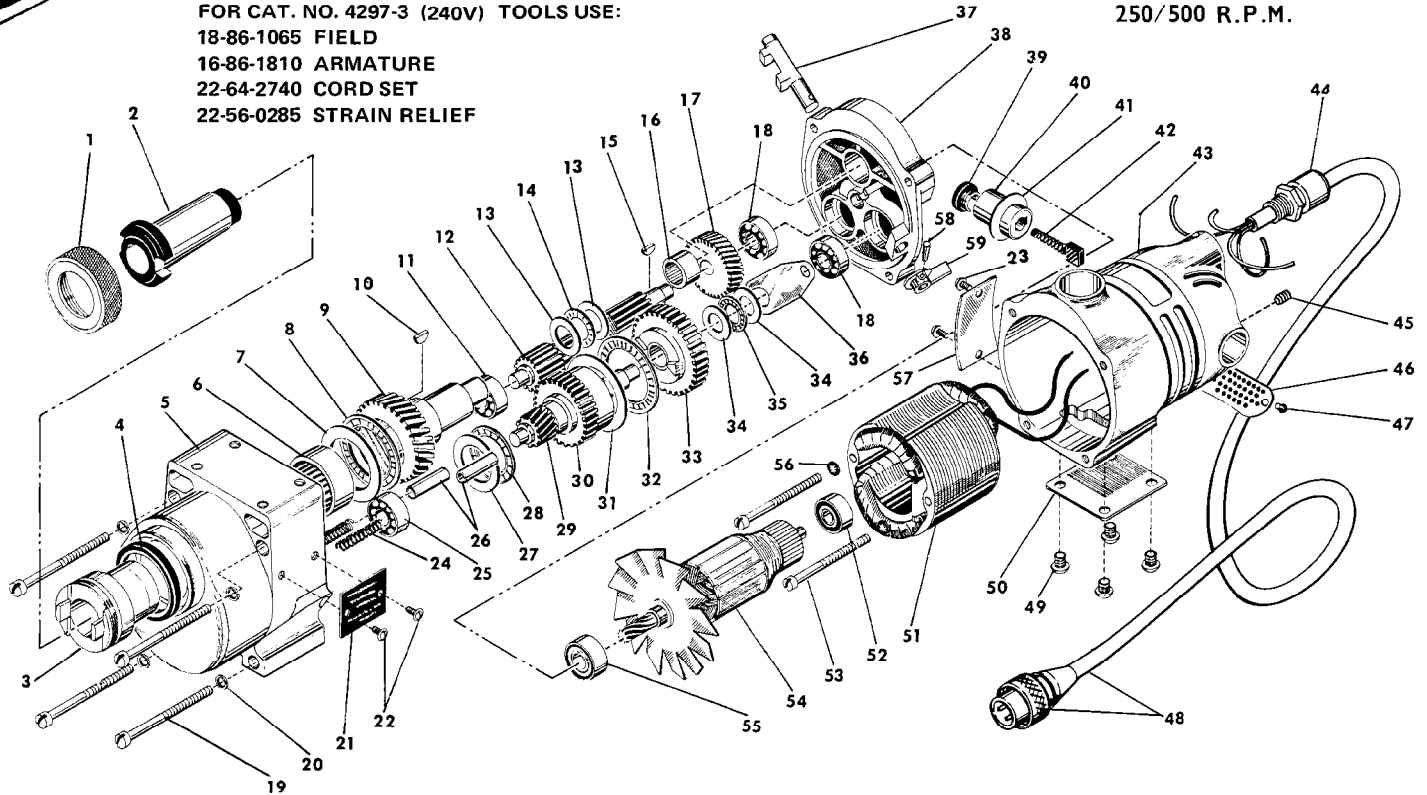


FIG.	PART NO.	DESCRIPTION OF PART	NO. REQ.	FIG.	PART NO.	DESCRIPTION OF PART	NO. REQ.
1	42-52-0050	Taper Socket Cap	(1)	31	45-88-0530	Thrust Bearing Washer	(1)
2	45-34-0050	#3 Taper Socket	(1)	32	02-80-5000	Thrust Bearing	(1)
3	38-50-4651	Spindle	(1)	33	32-10-0051	Clutch Gear Assembly	(1)
4	45-06-0100	Oil Seal	(1)	34	45-88-0510	Thrust Bearing Washer	(2)
5	28-14-1221	Gear Case	(1)	35	02-80-1200	Thrust Bearing	(1)
6	02-50-9975	Needle Bearing	(1)	36	45-98-0090	Shifting Yoke	(1)
7	45-88-0530	Thrust Bearing Washer	(1)	37	30-15-0051	Shifting Cam	(1)
8	02-80-5000	Thrust Bearing	(1)	38	28-28-1365	Diaphragm - Includes:	(1)
9	32-75-2581	Spindle Gear	(1)		06-65-0680	Groove Pin	(1)
10	06-42-2400	Woodruff Key	(1)	39	23-44-0030	Brush Retaining Screw	(2)
11	02-04-1260	Ball Bearing	(1)	40	22-22-0015	Brush Holder	(2)
12	36-66-3751	Pinion Shaft Assembly	(1)	41	23-86-0060	Brush Holder Washer	(2)
13	45-88-0515	Thrust Washer	(2)	42	22-18-0055	Carbon Brush	(2)
14	02-80-1525	Thrust Bearing	(1)	43	28-50-4121	Motor Housing	(1)
15	06-42-1600	Woodruff Key	(1)	44	22-56-0280	Strain Relief	(1)
16	02-50-4830	Needle Bearing	(1)	45	06-83-2650	1/4-20x3/8 Knrl. Set Screw	(2)
17	32-40-1581	Intermediate Gear	(1)	46	44-66-0180	Cover Plate	(1)
18	02-04-1205	Ball Bearing	(2)	47	06-81-8650	6-32x1/4 Rd. Hd. Sem	(2)
19	06-81-2125	1/4-20x3-1/2 Fil. Hd. Screw	(4)	48	22-64-0740	Cord Set	(1)
20	06-97-3800	Lockwasher	(4)	49	06-81-5000	1/4-20x3/8 Truss Hd. Screw	(4)
21	12-98-2105	Instruction Plate	(1)	50	44-66-0050	Body Cover Plate	(1)
22	06-81-4430	4-40x1/4 Rd. Hd. Screw	(2)	51	18-82-1070	120 V. Field	(1)
23	06-85-0200	6x1/4 Rd. Hd. Type Z Screw	(2)	52	02-04-1070	Ball Bearing	(1)
24	40-50-6300	Shifting Spring	(2)	53	06-81-1150	10-24x3-1/8 Fil. Hd. Screw	(2)
25	02-04-1260	Ball Bearing	(1)	54	16-82-1781	120 V. Rev. Armature	(1)
26	44-70-0100	Shifting Plunger	(2)	55	02-04-1265	Ball Bearing	(1)
27	45-88-0520	Thrust Bearing Washer	(1)	56	06-97-2200	Lockwasher	(2)
28	02-80-1800	Thrust Bearing	(1)	57	12-99-0040	Nameplate	(1)
29	36-14-0071	Pinion Clutch Shaft	(1)	58	06-65-0840	1/8x3/4 Groove Pin	(1)
30	32-10-0061	Clutch Gear Assembly	(1)	59	28-60-0051	Shift Knob Housing	(1)
				60	12-98-7081	Caution Plate (Not Shown)	(1)



SERVICE PARTS LIST

BULLETIN NO.
54-14-4301

SPECIFY CATALOG NO. AND SERIAL NO. WHEN ORDERING PARTS		REVISED BULLETIN	DATE
1-1/4" TWO SPEED DRILL		54-14-4300	May '82
CATALOG NO. 4297-1	STARTING SERIAL NO. 505-5600	WIRING INSTRUCTION 58-01-0375	
CAT. NO. 4297-6	START SER. NO. 505-5600	BILINGUAL LABEL 10-98-6120	

FOR CAT. NO. 4297-3 (240V) TOOLS USE:
18-76-0070 FIELD
16-76-0100 ARMATURE
22-64-2740 CORD SET
22-56-0286 STRAIN RELIEF

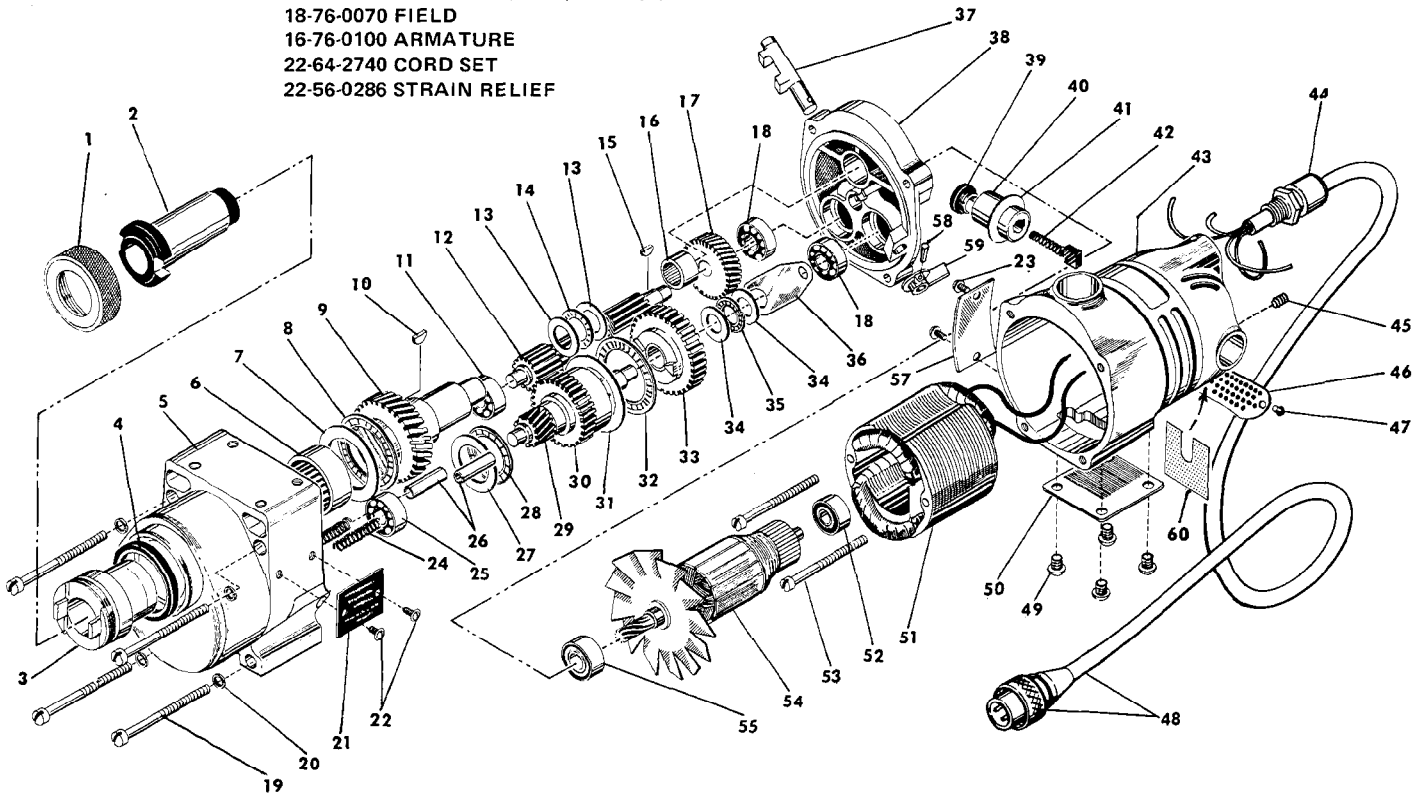


FIG.	PART NO.	DESCRIPTION OF PART	NO. REQ.	FIG.	PART NO.	DESCRIPTION OF PART	NO. REQ.
1	42-52-0050	Taper Socket Cap	(1)	31	45-88-0530	Thrust Bearing Washer	(1)
2	45-34-0050	3 Taper Socket	(1)	32	02-80-5000	Thrust Bearing	(1)
3	38-50-4651	Spindle	(1)	33	32-10-0051	Clutch Gear Assembly	(1)
4	45-06-0100	Oil Seal	(1)	34	45-88-0510	Thrust Bearing Washer	(2)
5	28-14-1221	Gear Case	(1)	35	02-80-1200	Thrust Bearing	(1)
6	02-50-9975	Needle Bearing	(1)	36	45-98-0090	Shifting Yoke	(1)
7	45-88-0530	Thrust Bearing Washer	(1)	37	30-15-0051	Shifting Cam	(1)
8	02-80-5000	Thrust Bearing	(1)	38	28-28-1365	Diaphragm - Includes:	
9	32-75-2581	Spindle Gear	(1)		06-65-0680	Groove Pin	(1)
10	06-42-2400	Woodruff Key	(1)	39	23-44-0030	Brush Retaining Screw	(2)
11	02-04-1260	Ball Bearing	(1)	★ 40	22-22-1015	Brush Holder	(2)
12	36-66-3751	Pinion Shaft Assembly	(1)	41	23-86-0060	Brush Holder Washer	(2)
13	45-88-0515	Thrust Washer	(2)	42	22-18-0055	Carbon Brush	(2)
14	02-80-1525	Thrust Bearing	(1)	43	28-50-4121	Motor Housing	(1)
15	06-42-1600	Woodruff Key	(1)	44	22-56-0280	Strain Relief	(1)
16	02-50-4830	Needle Bearing	(1)	45	06-83-2650	1/4-20x3/8 Knrl. Set Screw	(2)
17	32-40-1581	Intermediate Gear	(1)	46	44-66-0180	Cover Plate	(1)
18	02-04-1205	Ball Bearing	(2)	47	06-81-8650	6-32x1/4 Rd. Hd. Sem	(2)
19	06-81-2125	1/4-20x3-1/2 Fil. Hd. Screw	(4)	48	22-64-0740	Cord Set	(1)
20	06-97-3800	Lockwasher	(4)	49	06-81-5000	1/4-20x3/8 Truss Hd. Screw	(4)
21	12-98-2105	Instruction Plate	(1)	50	44-66-0050	Body Cover Plate	(1)
22	06-81-4430	4-40x1/4 Rd. Hd. Screw	(2)	★ 51	18-70-0070	120 V. Field	(1)
23	06-85-0200	6x1/4 Rd. Hd. Type Z Screw	(2)	52	02-04-1070	Ball Bearing	(1)
24	40-50-6300	Shifting Spring	(2)	★ 53	06-81-9190	10-24x2-1/4 Rd. Hd. Sem	(2)
25	02-04-1260	Ball Bearing	(1)	★ 54	16-70-0100	120 V. Rev. Armature	(1)
26	44-70-0100	Shifting Plunger	(2)	★ 55	02-04-1260	Ball Bearing	(1)
27	45-88-0520	Thrust Bearing Washer	(1)	▶ 56	12-98-7082	Caution Plate (Not Shown)	(1)
28	02-80-1800	Thrust Bearing	(1)	57	12-99-0040	Nameplate	(1)
29	36-14-0071	Pinion Clutch Shaft	(1)	58	06-65-0840	1/8x3/4 Groove Pin	(1)
30	32-10-0061	Clutch Gear Assembly	(1)	59	28-60-0051	Shift Knob Housing	(1)
				★ 60	23-16-0830	Arc Insulator	(1)

▶ Omit for Canadian Tools



SERVICE PARTS LIST

BULLETIN NO.
54-14-4302

SPECIFY CATALOG NO. AND SERIAL NO. WHEN ORDERING PARTS		REVISED BULLETIN 54-14-4301	DATE Sept. '83
1-1/4" TWO SPEED DRILL			
CATALOG NO. 4297-1	STARTING SERIAL NO. 505-14500	WIRING INSTRUCTION 58-01-0375	
CAT. NO. 4297-6	START SER. NO. 505-14500	BILINGUAL LABEL 10-98-6120	

FOR CAT. NO. 4297-3 (240V) TOOLS USE:
18-76-0070 FIELD
16-76-0100 ARMATURE
22-64-2740 CORD SET
22-56-0286 STRAIN RELIEF

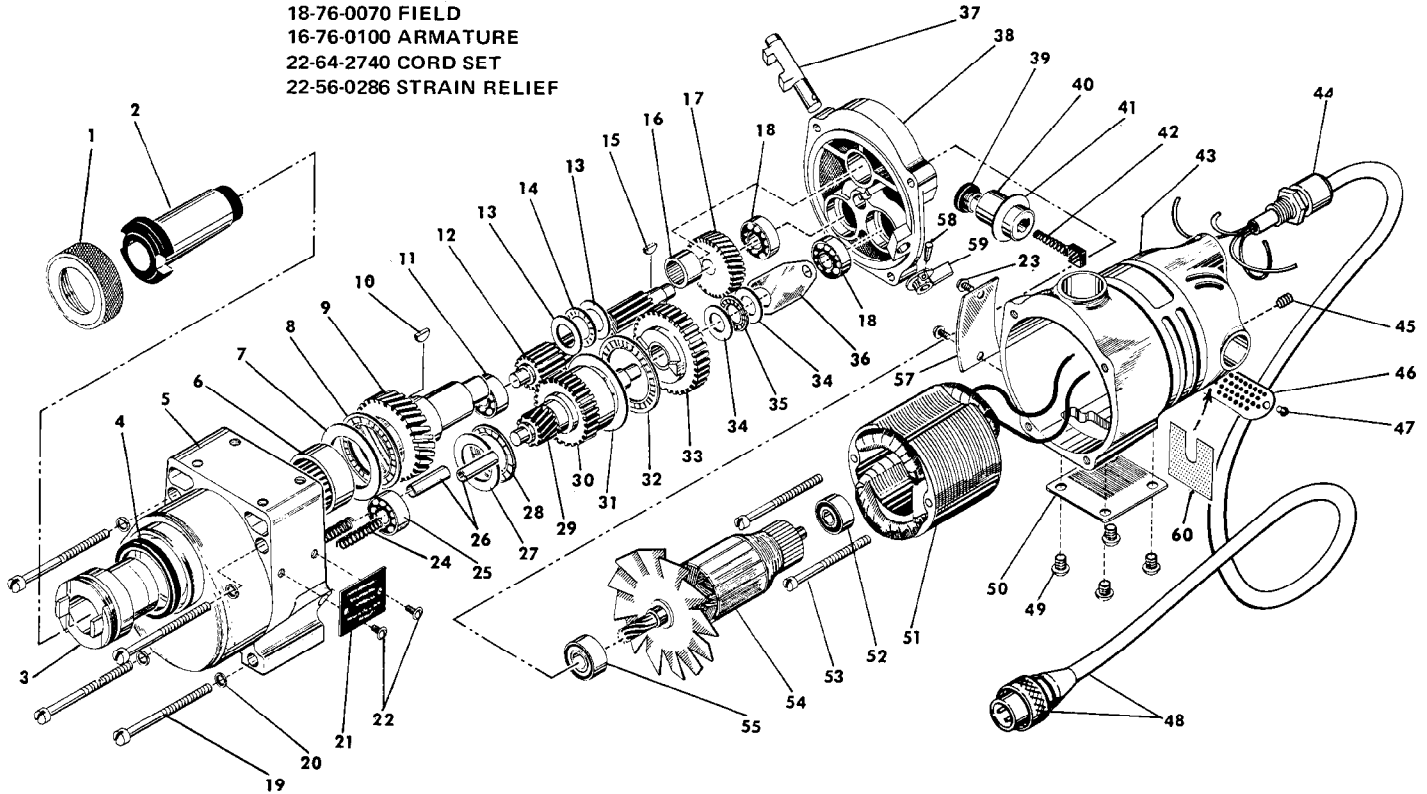


FIG.	PART NO.	DESCRIPTION OF PART	NO. REQ.	FIG.	PART NO.	DESCRIPTION OF PART	NO. REQ.
1	42-52-0050	Taper Socket Cap	(1)	31	45-88-0530	Thrust Bearing Washer	(1)
2	45-34-0050	3 Taper Socket	(1)	32	02-80-5000	Thrust Bearing	(1)
3	38-50-4651	Spindle	(1)	33	32-10-0051	Clutch Gear Assembly	(1)
4	45-06-0100	Oil Seal	(1)	34	45-88-0510	Thrust Bearing Washer	(2)
★ 5	28-14-1655	Gear Case Assy. (Includes 44-60-0320 Pivot Pin and 06-65-1535 Roll Pin)	(1)	35	02-80-1200	Thrust Bearing	(1)
6	02-50-9975	Needle Bearing	(1)	36	45-98-0090	Shifting Yoke	(1)
7	45-88-0530	Thrust Bearing Washer	(1)	★ 37	30-15-0055	Shifting Cam	(1)
8	02-80-5000	Thrust Bearing	(1)	38	28-28-1365	Diaphragm - Includes: 06-65-0680 Groove Pin	(1)
9	32-75-2581	Spindle Gear	(1)	39	23-44-0030	Brush Retaining Screw	(2)
10	06-42-2400	Woodruff Key	(1)	40	22-22-1015	Brush Holder	(2)
11	02-04-1260	Ball Bearing	(1)	41	23-86-0060	Brush Holder Washer	(2)
12	36-66-3751	Pinion Shaft Assembly	(1)	42	22-18-0055	Carbon Brush	(2)
13	45-88-0515	Thrust Washer	(2)	43	28-50-4122	Motor Housing (Incl 45-30-0110 BB Rtnng. Slug)	(1)
14	02-80-1525	Thrust Bearing	(1)	44	22-56-0280	Strain Relief	(1)
15	06-42-1600	Woodruff Key	(1)	45	06-83-2650	1/4-20x3/8 Knrl. Set Screw	(2)
16	02-50-4830	Needle Bearing	(1)	46	44-66-0180	Cover Plate	(1)
17	32-40-1581	Intermediate Gear	(1)	47	06-81-8650	6-32x1/4 Rd. Hd. Sem	(2)
18	02-04-1205	Ball Bearing	(2)	48	22-64-0740	Cord Set	(1)
19	06-81-2125	1/4-20x3-1/2 Fil. Hd. Screw	(4)	49	06-81-5000	1/4-20x3/8 Truss Hd. Screw	(4)
20	06-97-3800	Lockwasher	(4)	50	44-66-0050	Body Cover Plate	(1)
21	12-98-2105	Instruction Plate	(1)	51	18-70-0070	120 V. Field	(1)
★ 22	06-81-5789	4-40 x 1/4 Pan Hd. Taprite Screw	(2)	52	02-04-1070	Ball Bearing	(1)
23	06-85-0200	6x1/4 Rd. Hd. Type Z Screw	(2)	53	06-81-9190	10-24x2-1/4 Rd. Hd. Sem	(2)
24	40-50-6300	Shifting Spring	(2)	54	16-70-0100	120 V. Rev. Armature	(1)
25	02-04-1260	Ball Bearing	(1)	55	02-04-1260	Ball Bearing	(1)
26	44-70-0100	Shifting Plunger	(2)	▶ 56	12-98-7082	Caution Plate (Not Shown)	(1)
27	45-88-0520	Thrust Bearing Washer	(1)	57	12-99-0040	Nameplate	(1)
28	02-80-1800	Thrust Bearing	(1)	58	06-65-0840	1/8x3/4 Groove Pin	(1)
29	36-14-0071	Pinion Clutch Shaft	(1)	★ 59	28-60-0056	Shift Knob	(1)
30	32-10-0061	Clutch Gear Assembly	(1)	60	23-16-0835	Arc Insulator	(1)

▶ Omit for Canadian Tools



SERVICE PARTS LIST

BULLETIN NO.
54-14-4303

SPECIFY CATALOG NO. AND SERIAL NO. WHEN ORDERING PARTS		REVISED BULLETIN 54-14-4302	DATE Aug.'87
1-1/4" TWO SPEED DRILL			
CATALOG NO. 4297-1		STARTING SERIAL NO. 505-17284	
WIRING INSTRUCTION 58-01-0375			
CAT. NO.	START SER. NO.	BILINGUAL LABEL	

FOR CAT. NO. 4297-3 (240V) TOOLS USE:
 18-76-0070 FIELD
 16-76-0100 ARMATURE
 22-64-2740 CORD SET
 22-56-0286 STRAIN RELIEF

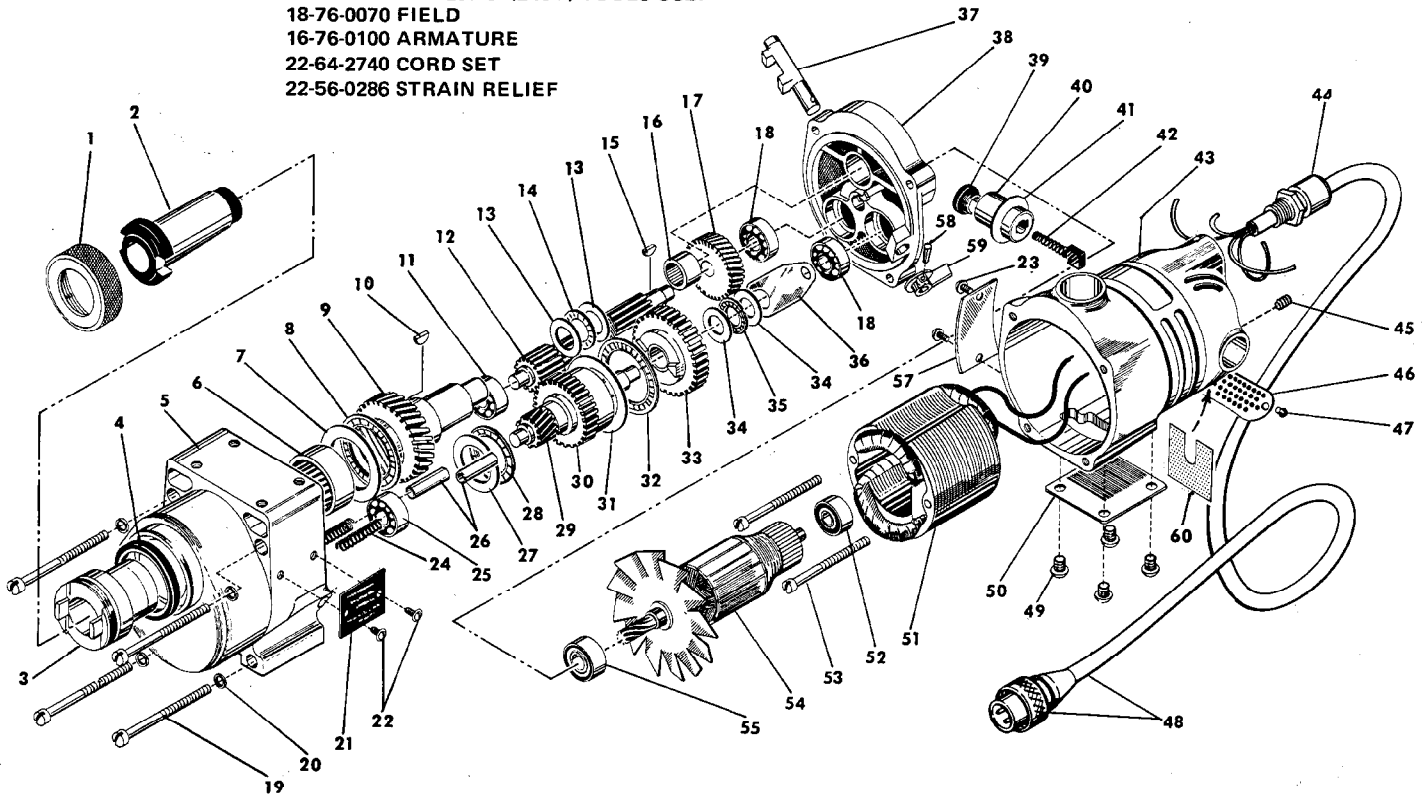


FIG.	PART NO.	DESCRIPTION OF PART	NO. REQ.	FIG.	PART NO.	DESCRIPTION OF PART	NO. REQ.
1	42-52-0050	Taper Socket Cap	(1)	31	45-88-0530	Thrust Bearing Washer	(1)
2	45-34-0050	3 Taper Socket	(1)	32	02-80-5000	Thrust Bearing	(1)
★ 3	38-50-5490	Spindle	(1)	33	32-10-0051	Clutch Gear Assembly	(1)
★ 4	45-06-0380	Oil Seal	(1)	34	45-88-0510	Thrust Bearing Washer	(2)
★ 5	28-14-1830	Gear Case Assy. (Includes 44-60-0320 Pivot Pin and 06-65-1535 Roll Pin)	(1)	35	02-80-1200	Thrust Bearing	(1)
★ 6	02-50-9970	Needle Bearing	(1)	36	45-98-0090	Shifting Yoke	(1)
7	45-88-0530	Thrust Bearing Washer	(1)	37	30-15-0055	Shifting Cam	(1)
8	02-80-5000	Thrust Bearing	(1)	38	28-28-1365	Diaphragm - Includes: Groove Pin	(1)
9	32-75-2581	Spindle Gear	(1)	39	23-44-0030	Brush Retaining Screw	(2)
10	06-42-2400	Woodruff Key	(1)	40	22-22-1015	Brush Holder	(2)
★ 11	02-04-1205	Ball Bearing	(1)	41	23-86-0060	Brush Holder Washer	(2)
12	36-66-3751	Pinion Shaft Assembly	(1)	42	22-18-0055	Carbon Brush	(2)
13	45-88-0515	Thrust Washer	(2)	43	28-50-4122	Motor Housing (Incl 45-30-0110 BB Rtnng. Slug)	(1)
14	02-80-1525	Thrust Bearing	(1)	44	22-56-0280	Strain Relief	(1)
15	06-42-1600	Woodruff Key	(1)	45	06-83-2650	1/4-20x3/8 Knrl. Set Screw	(2)
16	02-50-4830	Needle Bearing	(1)	46	44-66-0180	Cover Plate	(1)
17	32-40-1581	Intermediate Gear	(1)	47	06-81-8650	6-32x1/4 Rd. Hd. Sem	(2)
18	02-04-1205	Ball Bearing	(2)	48	22-64-0740	Cord Set	(1)
19	06-81-2125	1/4-20x3-1/2 Fil. Hd. Screw	(4)	49	06-81-5000	1/4-20x3/8 Truss Hd. Screw	(4)
20	06-97-3800	Lockwasher	(4)	50	44-66-0050	Body Cover Plate	(1)
21	12-98-2105	Instruction Plate	(1)	51	18-70-0070	120 V. Field	(1)
22	06-81-5789	4-40 x 1/4 Pan Hd. Taprite Screw	(2)	52	02-04-1070	Ball Bearing	(1)
23	06-85-0200	6x1/4 Rd. Hd. Type Z Screw	(2)	53	06-81-9190	10-24x2-1/4 Rd. Hd. Sem	(2)
24	40-50-6300	Shifting Spring	(2)	54	16-70-0100	120 V. Rev. Armature	(1)
★ 25	02-04-1205	Ball Bearing	(1)	55	02-04-1260	Ball Bearing	(1)
26	44-70-0100	Shifting Plunger	(2)	56	12-98-7082	Caution Plate (Not Shown)	(1)
27	45-88-0520	Thrust Bearing Washer	(1)	57	12-99-0040	Nameplate	(1)
28	02-80-1800	Thrust Bearing	(1)	58	06-65-0840	1/8x3/4 Groove Pin	(1)
★ 29	36-14-0720	Pinion Clutch Shaft	(1)	59	28-60-0056	Shift Knob	(1)
30	32-10-0061	Clutch Gear Assembly	(1)	60	23-16-0830	Arc Insulator	(1)



SERVICE PARTS LIST

BULLETIN NO.
54-14-4304

SPECIFY CATALOG NO. AND SERIAL NO. WHEN ORDERING PARTS		REVISED BULLETIN 54-14-4303	DATE Aug. '87
1-1/4" TWO SPEED DRILL			
CATALOG NO. 4297-1	STARTING SERIAL NO. 505-17800	WIRING INSTRUCTION 58-01-0376	

EXAMPLE:

00 Component Parts (Small #) Are Included
When Ordering The Assembly Part (Large #).

FIG.	PART NO.	DESCRIPTION OF PART	NO. REQ.
1	42-52-0050	Taper Socket Cap	(1)
★ 2	45-34-0110	Taper Socket	(1)
3	38-50-5490	Reversing Spindle	(1)

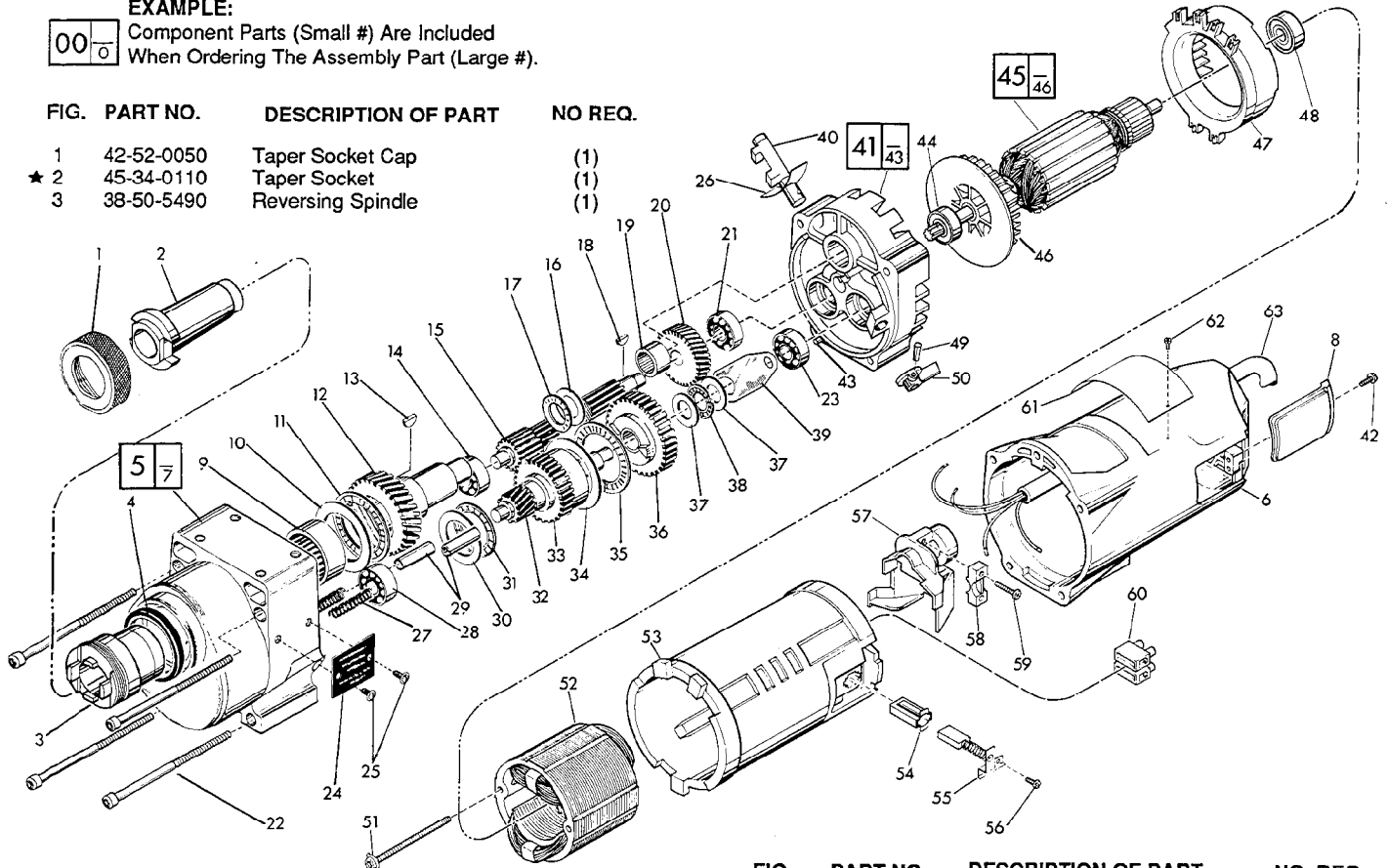


FIG.	PART NO.	DESCRIPTION OF PART	NO. REQ.
4	45-06-0380	Oil Seal	(1)
5	28-14-1880	Gear Case Assembly	(1)
★ 6	28-50-6360	Motor Housing	(1)
7	06-65-1535	Roll Pin (Not Shown)	(1)
★ 8	22-32-0350	Brush Cover	(2)
9	02-50-9970	Needle Bearing	(1)
10	45-88-0530	Thrust Bearing Washer	(1)
11	02-80-5000	Thrust Bearing	(1)
12	32-75-2581	Spindle Gear	(1)
13	06-42-2400	Woodruff Key	(1)
14	02-04-1205	Ball Bearing	(1)
15	36-66-3751	Pinion Shaft Assembly	(1)
16	45-88-0515	Thrust Washer	(1)
17	02-80-1525	Thrust Bearing	(1)
18	06-42-1600	Woodruff Key	(1)
19	02-50-4830	Needle Bearing	(1)
20	32-40-1581	Intermediate Gear	(1)
21	02-04-1205	Ball Bearing	(1)
★ 22	06-82-9202	1/4-20x4-1/4" Pan Hd. Taptite Torx	(4)
23	02-04-1205	Ball Bearing	(1)
24	12-98-2105	Instruction Plate	(1)
★ 25	06-82-5266	4-40x1/4" Pan Hd. Taptite Screw	(2)
★ 26	45-06-0350	Gear Case Seal	(1)
27	40-50-6300	Shifting Spring	(2)
28	02-04-1205	Ball Bearing	(1)
29	44-70-0100	Shifting Plunger	(2)
30	45-88-0520	Thrust Bearing Washer	(1)
31	02-80-1800	Thrust Bearing	(1)
32	36-14-0720	Pinion Clutch Shaft	(1)
33	32-10-0061	Clutch Gear Assembly	(1)
34	45-88-0530	Thrust Bearing Washer	(1)
35	02-80-5000	Thrust Bearing	(1)
36	32-10-0051	Clutch Gear Assembly	(1)
37	45-88-0510	Thrust Bearing Washer	(2)
38	02-80-1200	Thrust Bearing	(1)

FIG.	PART NO.	DESCRIPTION OF PART	NO. REQ.
39	45-98-0090	Shifting Yoke	(1)
40	30-15-0055	Shifting Cam	(1)
★ 41	14-13-0210	Diaphragm Assembly	(1)
★ 42	06-82-7252	8-32x3/8" Pan Hd. Taptite Torx	(2)
★ 43	06-65-1155	Groove Pin	(1)
★ 44	02-04-1229	Ball Bearing	(1)
★ 45	16-70-0375	120 V. D. I. Armature	(1)
★ 46	22-84-0790	Fan	(1)
★ 47	42-14-0291	Baffle	(1)
★ 48	02-04-1041	Ball Bearing	(1)
49	06-65-0840	1/8x3/4 Groove Pin	(1)
50	28-60-0056	Shifting Knob	(1)
★ 51	06-82-9072	10-24x2-1/8" Pan Sems Torx Screw	(2)
★ 52	18-70-0320	120 V. Field	(1)
★ 53	23-16-1410	Insulating Housing	(1)
★ 54	22-20-0680	Brush Tube	(2)
★ 55	22-18-0700	Carbon Brush Assembly	(2)
★ 56	06-82-8835	8-32x5/16" Pan Sems Torx Screw	(2)
★ 57	22-38-0140	Wire Clamp	(1)
★ 58	31-17-0200	Cord Clamp	(1)
★ 59	06-82-7326	8-16x1" Pan Plast. Slit. Torx	(2)
★ 60	22-56-0470	Terminal Block	(1)
★ 61	12-15-9040	Nameplate	(1)
62	06-85-0200	Nameplate Screw	(2)
★ 63	22-64-3050	120 V. Cord and Plug	(1)

FIG. LUBRICATION

5 12 Oz. Type "E" Grease No. 49-08-4121.

FIG. NOTES

22 Apply Blue Loctite To Threads.



SERVICE PARTS LIST

BULLETIN NO.
54-14-4305

SPECIFY CATALOG NO. AND SERIAL NO. WHEN ORDERING PARTS		REVISED BULLETIN	DATE
1-1/4" TWO SPEED DRILL		54-14-4304	Oct. '90
CATALOG NO.	4297-1	WIRING INSTRUCTION 58-01-0376	
STARTING SERIAL NO.	505-20000		

EXAMPLE:

00 $\frac{0}{0}$ Component Parts (Small #) Are Included When Ordering The Assembly (Large #).

FIG.	PART NO.	DESCRIPTION OF PART	NO. REQ.
1	42-52-0050	Taper Socket Cap	(1)
2	45-34-0110	Taper Socket	(1)
3	38-50-5490	Reversing Spindle	(1)
4	45-06-0380	Oil Seal	(1)

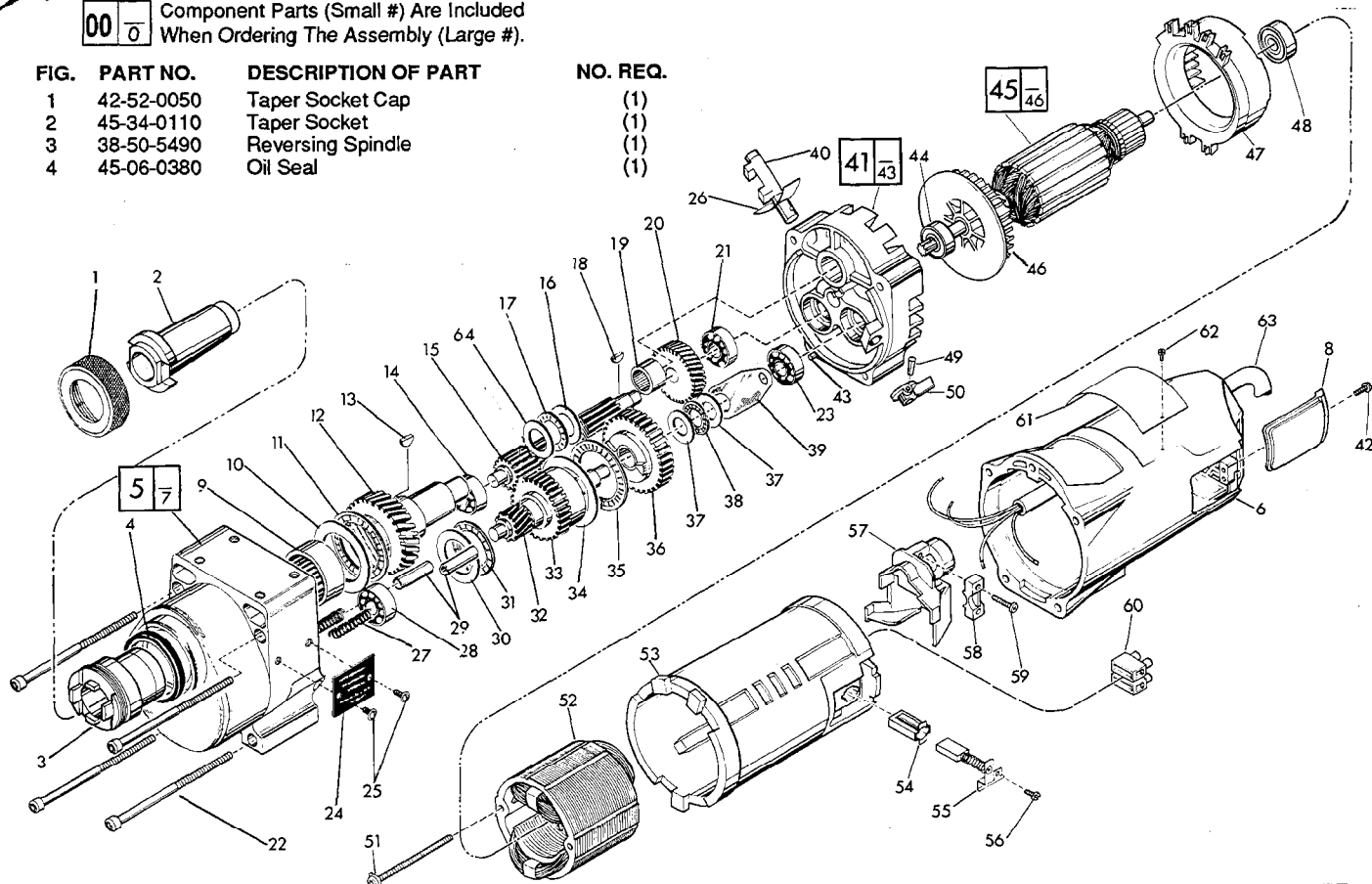


FIG.	PART NO.	DESCRIPTION OF PART	NO. REQ.
5	28-14-1880	Gear Case Assembly	(1)
6	28-50-6360	Motor Housing	(1)
7	06-65-1535	Roll Pin (Not Shown)	(1)
8	22-32-0350	Brush Cover	(2)
9	02-50-9970	Needle Bearing	(1)
10	45-88-0530	Thrust Bearing Washer	(1)
11	02-80-5000	Thrust Bearing	(1)
12	32-75-2581	Spindle Gear	(1)
13	06-42-2400	Woodruff Key	(1)
14	02-04-1205	Ball Bearing	(1)
15	36-66-3751	Pinion Shaft Assembly	(1)
★16	45-88-1090	Thrust Washer	(1)
17	02-80-1525	Thrust Bearing	(1)
18	06-42-1600	Woodruff Key	(1)
19	02-50-4830	Needle Bearing	(1)
20	32-40-1581	Intermediate Gear	(1)
21	02-04-1205	Ball Bearing	(1)
22	06-82-9202	1/4-20x4-1/4" Filister Hd. Taptite Torx	(4)
23	02-04-1205	Ball Bearing	(1)
24	12-98-2105	Instruction Plate	(1)
25	06-82-5266	4-40x1/4" Pan Hd. Taptite Screw	(2)
26	45-06-0350	Gear Case Seal	(1)
27	40-50-6300	Shifting Spring	(2)
28	02-04-1205	Ball Bearing	(1)
29	44-70-0100	Shifting Plunger	(2)
30	45-88-0520	Thrust Bearing Washer	(1)
31	02-80-1800	Thrust Bearing	(1)
32	36-14-0720	Pinion Clutch Shaft	(1)
33	32-10-0061	Clutch Gear Assembly	(1)
34	45-88-0530	Thrust Bearing Washer	(1)
35	02-80-5000	Thrust Bearing	(1)
36	32-10-0051	Clutch Gear Assembly	(1)
37	45-88-0510	Thrust Bearing Washer	(1)
38	02-80-1200	Thrust Bearing	(1)

FIG.	PART NO.	DESCRIPTION OF PART	NO. REQ.
39	45-98-0090	Shifting Yoke	(1)
★40	30-15-0056	Shifting Cam	(1)
41	14-13-0210	Diaphragm Assembly	(1)
42	06-82-7252	8-32x3/8" Pan Hd. Taptite Torx	(2)
43	06-65-1155	Groove Pin	(1)
44	02-04-1229	Ball Bearing	(1)
45	16-70-0375	120 V. D. I. Armature	(1)
46	22-84-0790	Fan	(1)
47	42-14-0291	Baffle	(1)
48	02-04-1041	Ball Bearing	(1)
49	06-65-0840	1/8x3/4 Groove Pin	(1)
50	28-60-0056	Shifting Knob	(1)
51	06-82-9072	10-24x2-1/8" Pan Sems Torx Screw	(2)
52	18-70-0320	120 V. Field	(1)
53	23-16-1410	Insulating Housing	(1)
54	22-20-0680	Brush Tube	(2)
★55	22-18-0701	Carbon Brush Assembly	(2)
56	06-82-8835	8-32x5/16" Pan Sems Torx Screw	(2)
57	22-38-0140	Wire Clamp	(1)
58	31-17-0200	Cord Clamp	(1)
59	06-82-7326	8-16x1" Pan Plast. Sit. Torx	(2)
60	22-56-0470	Terminal Block	(1)
61	12-15-9040	Nameplate	(1)
62	06-85-0200	Nameplate Screw	(2)
63	22-64-3050	120 V. Cord and Plug	(1)
★64	45-88-1080	Thrust Washer	(1)

FIG. LUBRICATION
5 12 Oz. Type "E" Grease, No. 49-08-4121.
FIG. NOTES
22 Apply Blue Loctite To Threads.



SERVICE PARTS LIST

BULLETIN NO.
54-14-4306

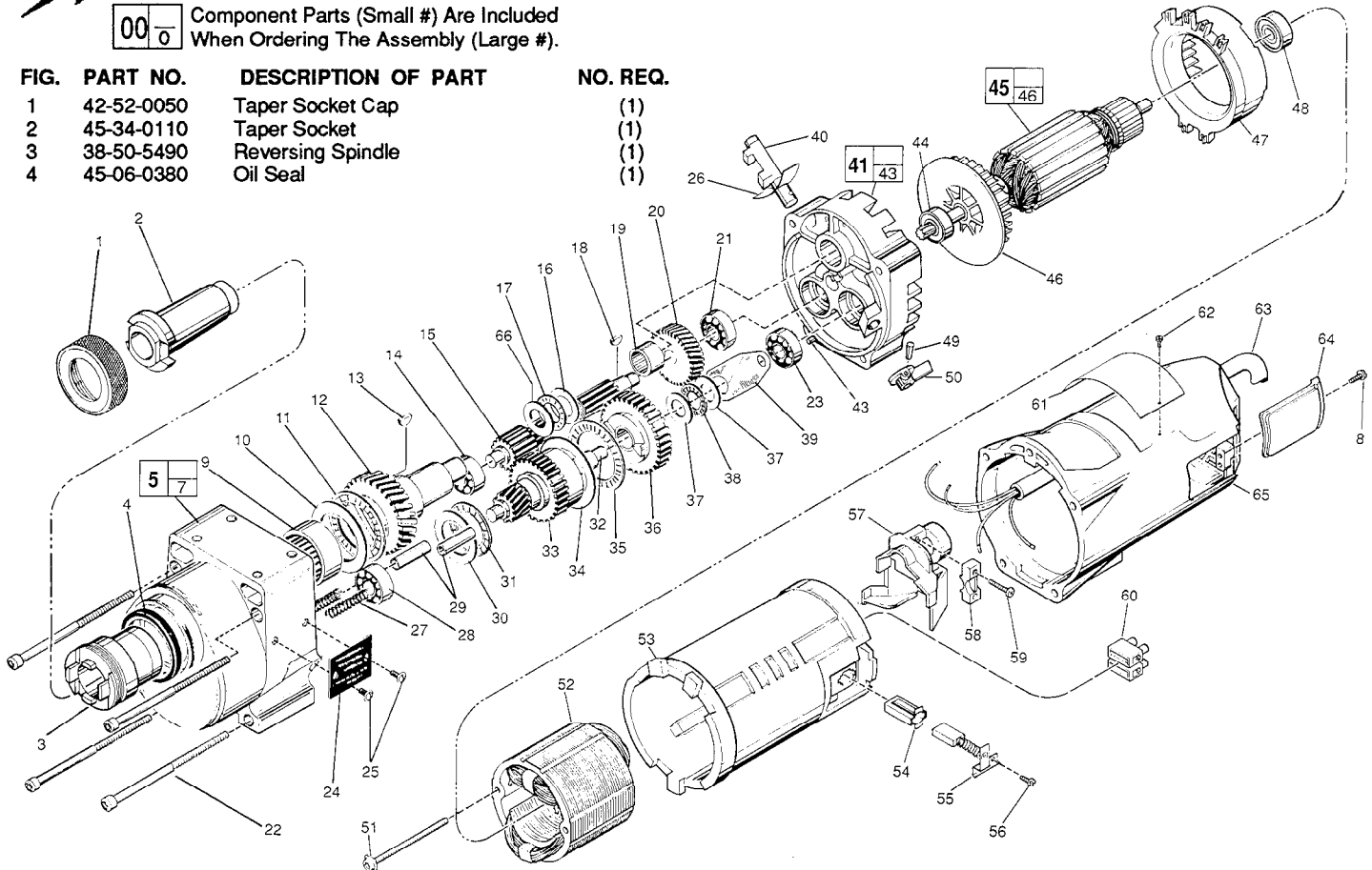
SPECIFY CATALOG NO. AND SERIAL NO. WHEN ORDERING PARTS		REVISED BULLETIN	DATE
1-1/4" TWO SPEED DRILL		54-14-4305	Mar.'94
CATALOG NO. 4297-1	STARTING SERIAL NO. 505A	WIRING INSTRUCTION 58-01-0376	

EXAMPLE:

00	0
----	---

 Component Parts (Small #) Are Included
 When Ordering The Assembly (Large #).

FIG.	PART NO.	DESCRIPTION OF PART	NO. REQ.
1	42-52-0050	Taper Socket Cap	(1)
2	45-34-0110	Taper Socket	(1)
3	38-50-5490	Reversing Spindle	(1)
4	45-06-0380	Oil Seal	(1)



5	28-14-1880	Gear Case Assembly	(1)
7	06-65-1535	Roll Pin (Not Shown)	(1)
★ 8	06-82-5316	8-32 x 1/2" Pan Hd. Slit. Taptite T-20	(2)
★ 9	02-50-9976	Needle Bearing	(1)
10	45-88-0530	Thrust Bearing Washer	(1)
11	02-80-5000	Thrust Bearing	(1)
12	32-75-2581	Spindle Gear	(1)
13	06-42-2400	Woodruff Key	(1)
14	02-04-1205	Ball Bearing	(1)
15	36-66-3751	Pinion Shaft Assembly	(1)
16	45-88-1090	Thrust Washer	(1)
17	02-80-1525	Thrust Bearing	(1)
18	06-42-1600	Woodruff Key	(1)
19	02-50-4830	Needle Bearing	(1)
20	32-40-1581	Intermediate Gear	(1)
21	02-04-1205	Ball Bearing	(1)
22	06-82-9202	1/4-20 x 4-1/4" Fillister Taptite T-30	(4)
23	02-04-1205	Ball Bearing	(1)
24	12-98-2105	Instruction Plate	(1)
25	06-82-5266	4-40 x 1/4" Pan Hd. Taptite T-10 Screw	(2)
26	45-06-0350	Gear Case Seal	(1)
27	40-50-6300	Shifting Spring	(2)
28	02-04-1205	Ball Bearing	(1)
29	44-70-0100	Shifting Plunger	(2)
30	45-88-0520	Thrust Bearing Washer	(1)
31	02-80-1800	Thrust Bearing	(1)
32	36-14-0720	Pinion Clutch Shaft	(1)
33	32-10-0061	Clutch Gear Assembly	(1)
34	45-88-0530	Thrust Bearing Washer	(1)
35	02-80-5000	Thrust Bearing	(1)
36	32-10-0051	Clutch Gear Assembly	(1)
37	45-88-0510	Thrust Bearing Washer	(1)
38	02-80-1200	Thrust Bearing	(1)
39	45-98-0090	Shifting Yoke	(1)

FIG.	PART NO.	DESCRIPTION OF PART	NO. REQ.
40	30-15-0056	Shifting Cam	(1)
41	14-13-0210	Diaphragm Assembly	(1)
43	06-65-1155	Groove Pin	(1)
44	02-04-1229	Ball Bearing	(1)
45	16-70-0375	120 V. D. I. Armature	(1)
46	22-84-0790	Fan	(1)
47	42-14-0291	Baffle	(1)
48	02-04-1041	Ball Bearing	(1)
49	06-65-0840	1/8 x 3/4 Groove Pin	(1)
★ 50	25-60-0056	Shifting Knob	(1)
51	06-82-9072	10-24 x 2-1/8" Pan Hd. T-25 Sems	(2)
52	18-70-0320	120 V. Field	(1)
53	23-16-1410	Insulating Housing	(1)
54	22-20-0680	Brush Tube	(2)
55	22-18-0701	Carbon Brush Assembly	(2)
56	06-82-8835	8-32 x 5/16" Pan Hd. T-20 Sems	(2)
57	22-38-0140	Wire Clamp	(1)
58	31-17-0200	Cord Clamp	(1)
59	06-82-7326	8-16 x 1" Pan Hd. Slit. Plast. T-20	(2)
60	22-56-0470	Terminal Block	(1)
★ 61	12-99-1300	Service Nameplate	(1)
★ 62	06-72-0720	Nameplate Rivet	(2)
63	22-64-3050	120 V. Cord and Plug	(1)
64	22-32-0350	Brush Cover	(2)
65	28-50-6360	Motor Housing	(1)
66	45-88-1080	Thrust Washer	(1)

FIG. LUBRICATION

★ 5 17 Oz. Type "J" Grease, No. 49-08-4220.

FIG. NOTES

22 Apply Blue Loctite To Threads.



SERVICE PARTS LIST

BULLETIN NO.
54-14-4307

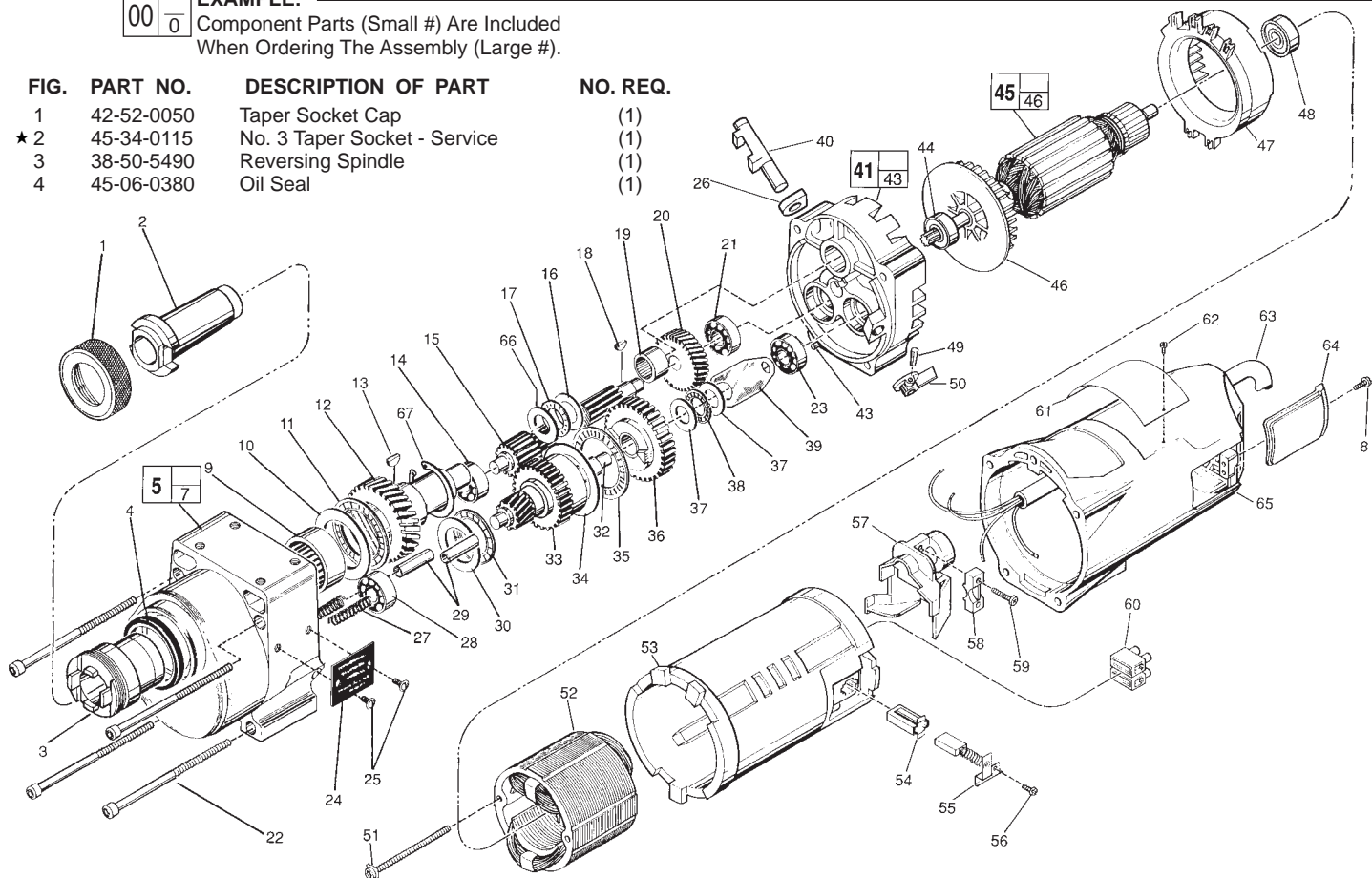
SPECIFY CATALOG NO. AND SERIAL NO. WHEN ORDERING PARTS		REVISED BULLETIN	DATE
1-1/4" TWO SPEED DRILL		54-14-4306	July 2011
CATALOG NO.	4297-1	WIRING INSTRUCTION	
STARTING SERIAL NO.	505B	58-01-0376	

EXAMPLE:

00	0
----	---

 Component Parts (Small #) Are Included
 When Ordering The Assembly (Large #).

FIG.	PART NO.	DESCRIPTION OF PART	NO. REQ.
1	42-52-0050	Taper Socket Cap	(1)
★ 2	45-34-0115	No. 3 Taper Socket - Service	(1)
3	38-50-5490	Reversing Spindle	(1)
4	45-06-0380	Oil Seal	(1)



5	28-14-1880	Gear Case Assembly	(1)
7	06-65-1535	Roll Pin (Not Shown)	(1)
8	06-82-5316	8-32 x 1/2" Pan Hd. Slit. Taptite T-20	(2)
9	02-50-9976	Needle Bearing	(1)
10	45-88-0530	Thrust Bearing Washer	(1)
11	02-80-5000	Thrust Bearing	(1)
12	32-75-2581	Spindle Gear	(1)
13	06-42-2400	Woodruff Key	(1)
14	02-04-1205	Ball Bearing	(1)
15	36-66-3751	Pinion Shaft Assembly	(1)
16	45-88-1090	Thrust Washer	(1)
17	02-80-1525	Thrust Bearing	(1)
18	06-42-1600	Woodruff Key	(1)
19	02-50-4830	Needle Bearing	(1)
20	32-40-1581	Intermediate Gear	(1)
21	02-04-1205	Ball Bearing	(1)
22	06-82-9202	1/4-20 x 4-1/4" Fillister Taptite T-30	(4)
23	02-04-1205	Ball Bearing	(1)
24	12-98-2105	Instruction Plate	(1)
25	06-82-5266	4-40 x 1/4" Pan Hd. Taptite T-10 Screw	(2)
★ 26	43-44-0580	Foam Gasket	(1)
27	40-50-6300	Shifting Spring	(2)
28	02-04-1205	Ball Bearing	(1)
29	44-70-0100	Shifting Plunger	(2)
30	45-88-0520	Thrust Bearing Washer	(1)
31	02-80-1800	Thrust Bearing	(1)
32	36-14-0720	Pinion Clutch Shaft	(1)
★ 33	14-29-0055	Gear Kit (Contains Gear and Spacer)	(1)
34	45-88-0530	Thrust Bearing Washer	(1)
35	02-80-5000	Thrust Bearing	(1)
36	32-10-0051	Clutch Gear Assembly	(1)
37	45-88-0510	Thrust Bearing Washer	(1)
38	02-80-1200	Thrust Bearing	(1)
39	45-98-0090	Shifting Yoke	(1)
40	30-15-0056	Shifting Cam	(1)
41	14-13-0210	Diaphragm Assembly	(1)

43	06-65-1155	Groove Pin	(1)
44	02-04-1229	Ball Bearing	(1)
45	16-70-0375	120 V. D. I. Armature	(1)
46	22-84-0790	Fan	(1)
47	42-14-0291	Baffle	(1)
48	02-04-1041	Ball Bearing	(1)
49	06-65-0840	1/8 x 3/4 Groove Pin	(1)
50	25-60-0056	Shifting Knob	(1)
51	06-82-9072	10-24 x 2-1/8" Pan Hd. T-25 Sems	(2)
52	18-70-0320	120 V. Field	(1)
53	23-16-1410	Insulating Housing	(1)
54	22-20-0680	Brush Tube	(2)
55	22-18-0701	Carbon Brush Assembly	(2)
56	06-82-8835	8-32 x 5/16" Pan Hd. T-20 Sems	(2)
57	22-38-0140	Wire Clamp	(1)
58	31-17-0200	Cord Clamp	(1)
59	06-82-7326	8-16 x 1" Pan Hd. Slit. Plast. T-20	(2)
60	22-56-0470	Terminal Block	(1)
61	12-99-1300	Service Nameplate	(1)
62	06-72-1720	Nameplate Rivet	(2)
63	22-64-3050	120 V. Cord and Plug	(1)
64	22-32-0350	Brush Cover	(2)
65	28-50-6360	Motor Housing	(1)
66	45-88-1080	Thrust Washer	(1)
★ 67	34-60-0320	Snap Ring	(1)

FIG. LUBRICATION
 5 17 Oz. Type "J" Grease, No. 49-08-4220.
FIG. NOTES
 22 Apply Blue Loctite To Threads.