

SERVICE PARTS LIST

3/4" ELECTRIC DRILL

Catalog No. 4262-1

Starting Serial No. 502-1001

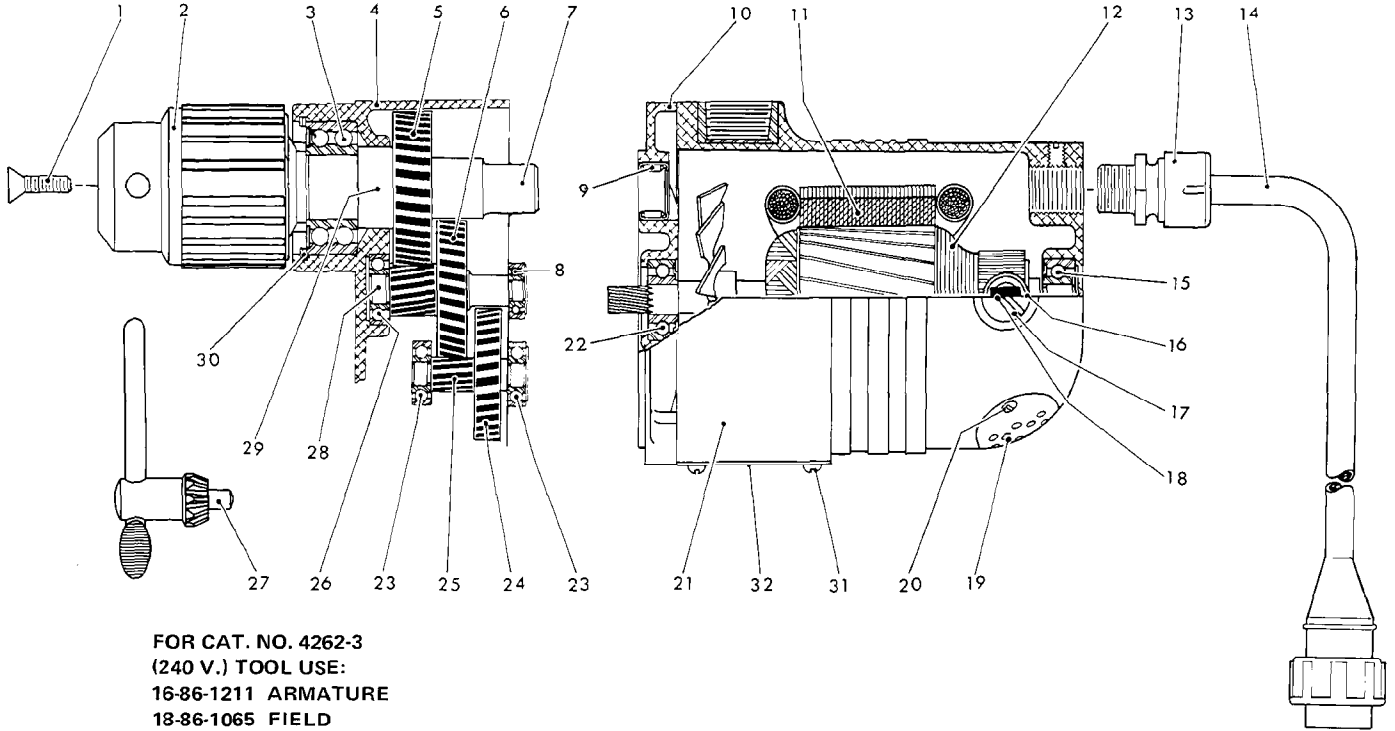
Specify Catalog and Serial No. when ordering parts

400 R.P.M.

BUL. 54-14-2400

REVISED BUL. DATE
June '75

WIRING INSTRUCTIONS
58-01-0371



**FOR CAT. NO. 4262-3
(240 V.) TOOL USE:
16-86-1211 ARMATURE
18-86-1065 FIELD
22-64-2740 CORD SET
22-56-0285 STRAIN RELIEF**

FIG.	PART NO.	DESCRIPTION OF PART	NO.REQ.	FIG.	PART NO.	DESCRIPTION OF PART	NO.REQ.
1	06-81-3100	5/16-18x1 Skt. Hd. Screw	(1)	16	22-22-0015	Brush Holder	(2)
2	48-66-2080	Chuck	(1)	17	23-44-0030	Brush Retaining Screw	(2)
3	02-20-2520	Ball Bearing	(1)	18	22-18-0055	Carbon Brush	(2)
4	28-14-0091	Gear Case	(1)	19	44-66-0180	Cover Plate	(1)
5	32-75-1261	Spindle Gear	(1)	20	06-81-8650	6-32x1/4 Rd. Hd. Sem	(2)
6	32-44-1141	Intermediate Gear	(1)	21	28-50-4121	Motor Housing	(1)
7	38-50-4251	Reversing Spindle	(1)	22	02-04-1140	Ball Bearing	(1)
8	02-04-0820	Ball Bearing	(1)	23	02-04-0910	Ball Bearing	(2)
9	02-50-4820	Needle Bearing	(1)	24	32-42-1201	Intermediate Gear	(1)
10	28-28-0301	Diaphragm - Includes:	(1)	25	36-66-1251	Intermediate Shaft	(1)
	06-65-1205	Groove Pin	(1)	26	02-04-1210	Ball Bearing	(1)
	45-30-0070	Ball Brg. Retaining Slug	(2)	27	48-66-3160	Chuck Key	(1)
11	18-82-1070	120 V. Field	(1)	28	36-66-1301	Intermediate Shaft	(1)
12	16-82-1231	120 V. Rev. Armature	(1)	29	45-36-0080	Spindle Spacer	(1)
13	22-56-0280	Strain Relief	(1)	30	34-80-3800	Retaining Ring	(1)
14	22-64-0740	Cord Set	(1)	31	06-81-5000	1/4-20x3/8 Truss Hd. Screw	(4)
15	02-04-1070	Ball Bearing	(1)	32	44-66-0050	Body Cover Plate	(1)

MISCELLANEOUS PARTS NOT SHOWN

06-81-1975	1/4-20x2-1/4 Fil. Hd. Screw (For Fig. No. 4)	(2)	06-85-0200	6x1/4 Rd. Hd. Type Z (Nameplate Screw)	(2)
06-81-2100	1/4-20x3-1/4 Fil. Hd. Screw (For Fig. No. 4)	(2)	06-83-2650	1/4-20x3/8 Knrl. Set Screw (For Fig. No. 16)	(2)
06-97-3800	Lockwasher (For Fig. No. 4)	(4)	23-86-0060	Brush Holder Washer	(2)
06-81-1150	10-24x3-1/8 Fil. Hd. Screw (For Fig. No. 11)	(2)	06-42-1200	Woodruff Key (For Fig. No. 24)	(1)
06-97-2200	Lockwasher (For Fig. No. 11)	(2)	06-42-2000	Woodruff Key (For Fig. No. 6)	(1)
12-99-0040	Nameplate	(1)	06-42-2400	Woodruff Key (For Fig. No. 5)	(1)
			12-98-7081	Caution Plate	(1)

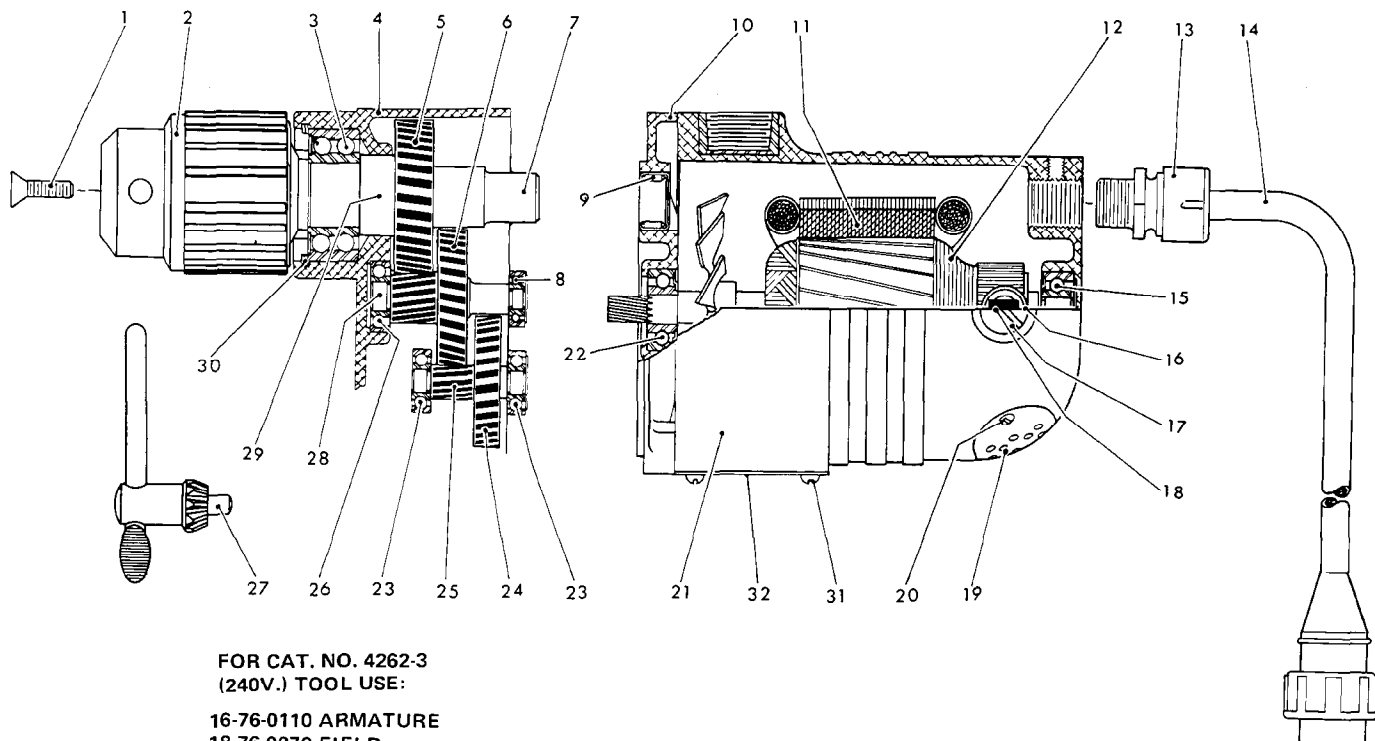


CANADIAN TOOLS →

SERVICE PARTS LIST

**BULLETIN NO.
54-14-2401**

SPECIFY CATALOG NO. AND SERIAL NO. WHEN ORDERING PARTS		REVISED BULLETIN	DATE
3/4" ELECTRIC DRILL		54-14-2400	May '82
CATALOG NO. 4262-1	STARTING SERIAL NO. 502-5000	WIRING INSTRUCTION 58-01-0375	
CAT. NO. 4262-6	START SER. NO. 502-5000	BILINGUAL LABEL 10-98-6120	



FOR CAT. NO. 4262-3
(240V.) TOOL USE:

16-76-0110 ARMATURE
18-76-0070 FIELD
22-64-2740 CORD SET
22-56-0286 STRAIN RELIEF

FIG.	PART NO.	DESCRIPTION OF PART	NO. REQ.	FIG.	PART NO.	DESCRIPTION OF PART	NO. REQ.
	1	06-81-3100 5/16-18x1 Skt. Hd. Screw	(1)		26	02-04-1210 Ball Bearing	(1)
	2	48-66-2080 Chuck	(1)		27	48-66-3160 Chuck Key	(1)
*	3	02-20-2521 Ball Bearing	(1)		28	36-66-1301 Intermediate Shaft	(1)
	4	28-14-0091 Gear Case	(1)		29	45-36-0080 Spindle Spacer	(1)
	5	32-75-1261 Spindle Gear	(1)		30	34-80-3800 Retaining Ring	(1)
	6	32-44-1141 Intermediate Gear	(1)		31	06-81-5000 1/4-20x3/8 Truss Hd. Screw	(4)
	7	38-50-4251 Reversing Spindle	(1)		32	44-66-0050 Body Cover Plate	(1)
	8	02-04-0820 Ball Bearing	(1)	MISCELLANEOUS PARTS NOT SHOWN			
	9	02-50-4820 Needle Bearing	(1)				
10	28-28-0301 Diaphragm - Includes:	(1)					
	06-65-1206 Groove Pin	(1)					
	45-30-0070 Ball Brg. Retaining Slug	(2)					
* 11	18-70-0070 120 V. Field	(1)					
* 12	16-70-0110 120 V. Rev. Armature	(1)					
13	22-56-0280 Strain Relief	(1)					
14	22-64-0740 Cord Set	(1)					
15	02-04-1070 Ball Bearing	(1)					
* 16	22-22-1015 Brush Holder	(2)					
17	23-44-0030 Brush Retaining Screw	(2)					
18	22-18-0055 Carbon Brush	(2)					
19	44-66-0180 Cover Plate	(1)					
20	06-81-8650 6-32x1/4 Rd. Hd. Sem	(1)					
21	28-50-4121 Motor Housing	(2)					
* 22	02-04-1260 Ball Bearing	(1)					
23	02-04-0910 Ball Bearing	(2)					
24	32-42-1201 Intermediate Gear	(1)					
25	36-66-1251 Intermediate Shaft	(1)					
					06-81-1975 1/4-20x2-1/4 Fil. Hd. Screw (For Fig. No. 4)	(2)	
					06-81-2100 1/4-20x3-1/4 Fil. Hd. Screw (For Fig. No. 4)	(2)	
					06-97-3800 Lockwasher (For Fig. No. 4)	(4)	
				*	06-81-9190 10-24x2-1/4 Rd. Hd. Sem (For Fig. No. 11)	(2)	
					12-99-0040 Nameplate	(1)	
					06-85-0200 6x1/4 Rd. Hd. Nameplate Screw	(2)	
					06-83-2650 1/4-20x3/8 Knrl. Set Screw (For Fig. No. 16)	(2)	
					23-86-0060 Brush Holder Washer	(2)	
					06-42-1200 Woodruff Key (For Fig. No. 24)	(1)	
					06-42-2000 Woodruff Key (For Fig. No. 6)	(1)	
					06-42-2400 Woodruff Key (For Fig. No. 5)	(1)	
					12-98-7082 Caution Plate Omit for Canadian Tools	(1)	
				*	23-16-0830 Arc Insulator	(1)	



SERVICE PARTS LIST

BULLETIN NO.
54-14-2402

SPECIFY CATALOG NO. AND SERIAL NO. WHEN ORDERING PARTS		REVISED BULLETIN 54-14-2401	DATE Aug. '87
3/4" ELECTRIC DRILL			
CATALOG NO. 4262-1	STARTING SERIAL NO. 502-17480	WIRING INSTRUCTION 58-01-0375	
CAT. NO.	START SER. NO.	BILINGUAL LABEL	

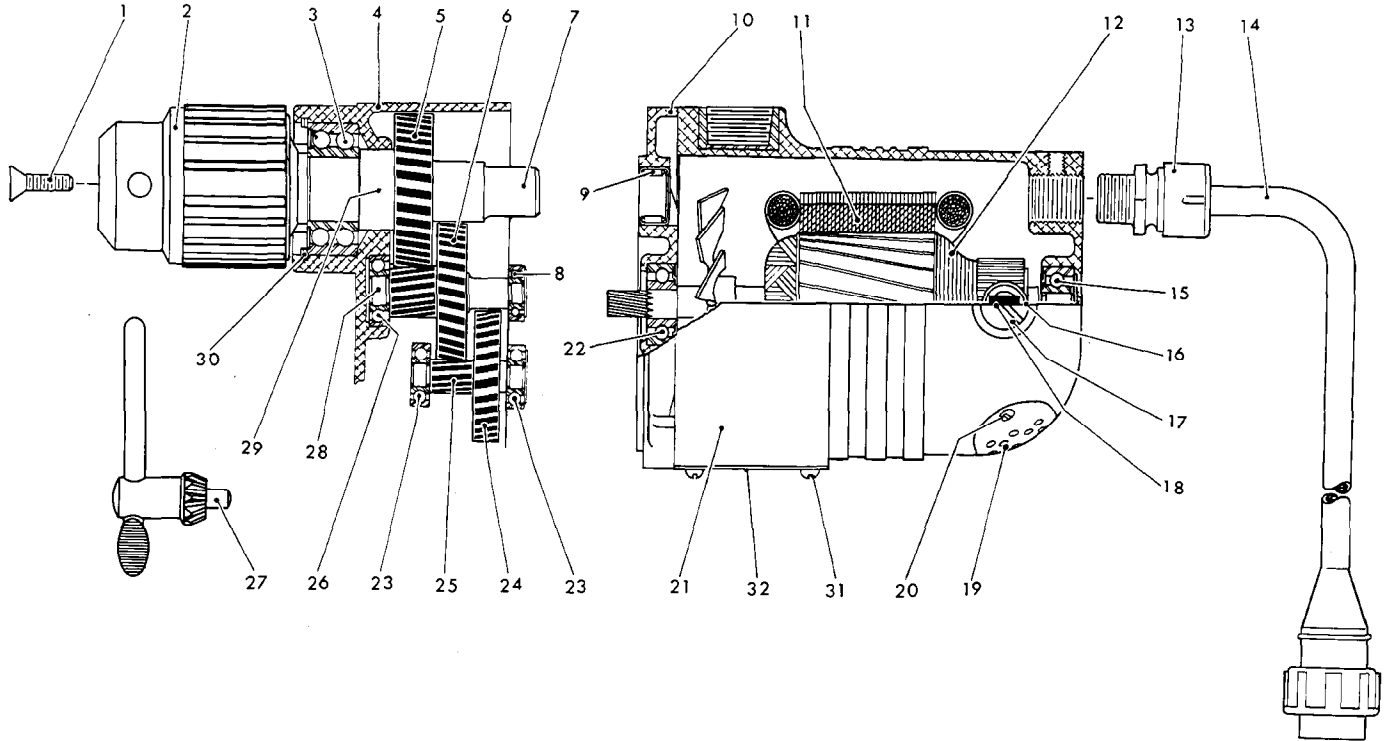


FIG.	PART NO.	DESCRIPTION OF PART	NO. REQ.
	1	06-81-3100 5/16-18x1 Skt. Hd. Screw	(1)
★	2	48-66-2085 Chuck	(1)
	3	02-20-2521 Ball Bearing	(1)
	4	28-14-0091 Gear Case	(1)
	5	32-75-1261 Spindle Gear	(1)
	6	32-44-1141 Intermediate Gear	(1)
★	7	38-50-5480 Reversing Spindle	(1)
	8	02-04-0820 Ball Bearing	(1)
	9	02-50-4820 Needle Bearing	(1)
	10	28-28-0301 Diaphragm - Includes: 06-65-1206 Groove Pin	(1)
		45-30-0070 Ball Brg. Retaining Slug	(2)
	11	18-70-0070 120 V. Field	(1)
	12	16-70-0110 120 V. Rev. Armature	(1)
	13	22-56-0280 Strain Relief	(1)
	14	22-64-0740 Cord Set	(1)
	15	02-04-1070 Ball Bearing	(1)
	16	22-22-1015 Brush Holder	(2)
	17	23-44-0030 Brush Retaining Screw	(2)
	18	22-18-0055 Carbon Brush	(2)
	19	44-66-0180 Cover Plate	(1)
	20	06-81-8650 6-32x1/4 Rd. Hd. Sem	(2)
	21	28-50-4121 Motor Housing	(1)
	22	02-04-1260 Ball Bearing	(1)
	23	02-04-0910 Ball Bearing	(2)
	24	32-42-1201 Intermediate Gear	(1)
	25	36-66-1251 Intermediate Shaft	(1)

FIG.	PART NO.	DESCRIPTION OF PART	NO. REQ.
	26	02-04-1210 Ball Bearing	(1)
	27	48-66-3160 Chuck Key	(1)
	28	36-66-1301 Intermediate Shaft	(1)
	29	45-36-0080 Spindle Spacer	(1)
	30	34-80-3800 Retaining Ring	(1)
	31	06-81-5000 1/4-20x3/8 Truss Hd. Screw	(4)
	32	44-66-0050 Body Cover Plate	(1)

MISCELLANEOUS PARTS NOT SHOWN

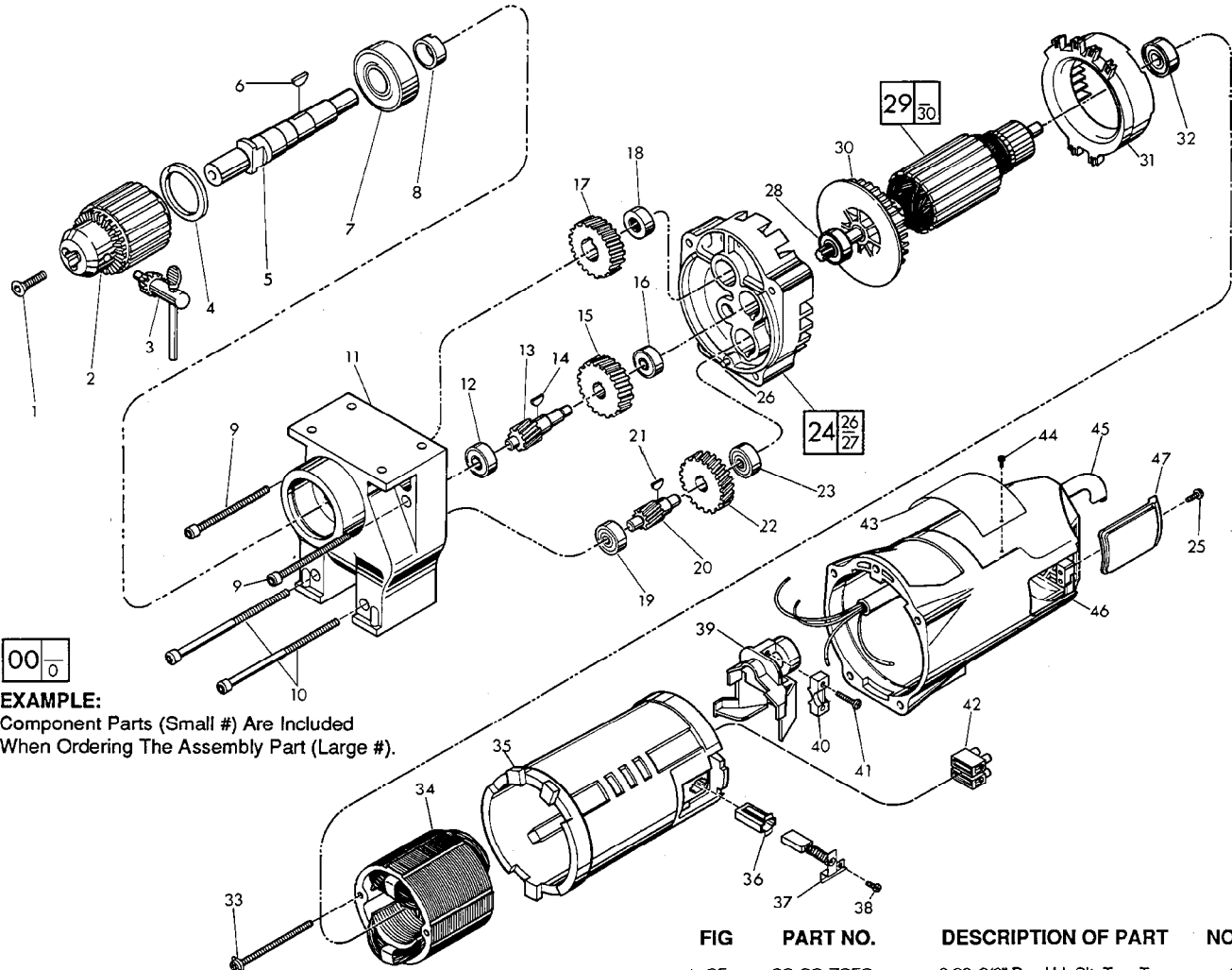
06-81-1975	1/4-20x2-1/4 Fil. Hd. Screw (For Fig. No. 4)	(2)
06-81-2100	1/4-20x3-1/4 Fil. Hd. Screw (For Fig. No. 4)	(2)
06-97-3800	Lockwasher (For Fig. No. 4)	(4)
06-81-9190	10-24x2-1/4 Rd. Hd. Sem (For Fig. No. 11)	(2)
12-99-0040	Nameplate	(1)
06-85-0200	6x1/4 Rd. Hd. Nameplate Screw	(2)
06-83-2650	1/4-20x3/8 Knrl. Set Screw (For Fig. No. 16)	(2)
23-86-0060	Brush Holder Washer	(2)
06-42-1200	Woodruff Key (For Fig. No. 24)	(1)
06-42-2000	Woodruff Key (For Fig. No. 6)	(1)
06-42-2400	Woodruff Key (For Fig. No. 5)	(1)
12-98-7082	Caution Plate	(1)
23-16-0830	Arc Insulator	(1)



SERVICE PARTS LIST

BULLETIN NO.
54-14-2403

SPECIFY CATALOG NO. AND SERIAL NO. WHEN ORDERING PARTS		REVISED BULLETIN 54-14-2402	DATE April'88
3/4" ELECTRIC DRILL			
CATALOG NO. 4262-1	STARTING SERIAL NO. 502-18600	WIRING INSTRUCTION 58-01-0376	



00
0

EXAMPLE:

Component Parts (Small #) Are Included
When Ordering The Assembly Part (Large #).

FIG.	PART NO.	DESCRIPTION OF PART	NO REQ.	FIG.	PART NO.	DESCRIPTION OF PART	NO. REQ.
1	06-81-3100	5/16-18x1" Skt. Hd. Screw	(1)	★ 25	06-82-7252	8-32x3/8" Pan Hd. Slit Tap. Torx	(2)
2	48-66-2085	3/4" Chuck	(1)	★ 26	06-65-1155	Groove Pin	(1)
3	48-66-3160	Chuck Key	(1)	27	45-30-0070	Ball Bearing Retaining Slug (Not Shown)	(2)
4	34-80-3800	Retaining Ring	(1)	★ 28	02-04-1229	Ball Bearing	(1)
5	38-50-5480	Reversing Spindle	(1)	★ 29	16-70-0360	120 V. Armature	(1)
6	06-42-2400	Woodruff Key	(1)	★ 30	22-84-0790	Fan	(1)
7	02-20-2521	Ball Bearing	(1)	★ 31	42-14-0291	Baffle	(1)
8	45-36-0080	Spindle Spacer	(1)	★ 32	02-04-1041	Ball Bearing	(1)
★ 9	06-82-8550	1/4-20x3-1/8" Fil. Taptite Torx Sems	(2)	★ 33	06-82-9072	10-24x2-1/8" Pan Hd. Torx Sems	(2)
★ 10	06-82-9202	1/4-20x4-1/4" Fil. Taptite Torx Sems	(2)	★ 34	18-70-0320	120 V. Field	(1)
11	28-14-0091	Gear Case Assembly	(1)	★ 35	23-16-1410	Insulating Housing	(1)
12	02-04-1210	Ball Bearing	(1)	★ 36	22-20-0680	Brush Tube	(2)
★ 13	36-66-1302	Intermediate Shaft	(1)	★ 37	22-18-0701	Carbon Brush Assembly	(2)
14	06-42-2000	Woodruff Key	(1)	★ 38	06-82-8835	8-32x5/16" Pan Hd. Slit. Torx Sems	(2)
15	32-44-1141	Intermediate Gear	(1)	★ 39	22-38-0140	Wire Trap	(1)
★ 16	02-04-0910	Ball Bearing	(1)	★ 40	31-17-0200	Cord Clamp	(1)
17	32-75-1261	Spindle Gear	(1)	★ 41	06-82-7326	8-16x1" Pan Hd. Plast. Slit. Torx	(2)
18	02-50-4820	Needle Bearing	(1)	★ 42	22-56-0470	Terminal Block	(1)
19	02-04-0910	Ball Bearing	(1)	★ 43	12-15-9040	Service Nameplate	(1)
20	36-66-1251	Intermediate Shaft	(1)	★ 44	06-85-0200	Service Nameplate Screw	(2)
21	06-42-1200	Woodruff Key	(1)	★ 45	22-64-3050	120 V. Cord Set	(1)
22	32-42-1201	Intermediate Gear	(1)	★ 46	28-50-6360	Motor Housing	(1)
23	02-04-0910	Ball Bearing	(1)	★ 47	22-32-0350	Brush Cover	(2)
★ 24	14-13-0250	Diaphragm Assembly	(1)				

FIG. LUBRICATION

11 9-1/2 Oz. Type "E" Grease No. 49-08-4121.

FIG. NOTES

9 & 10 Apply Blue Loctite To Threads.



SERVICE PARTS LIST

BULLETIN NO.
54-14-2404

SPECIFY CATALOG NO. AND SERIAL NO. WHEN ORDERING PARTS			REVISED BULLETIN	DATE
3/4" ELECTRIC DRILL			54-14-2403	Oct. 2000
CATALOG NO.	4262-1	STARTING SERIAL NO.	WIRING INSTRUCTION	
		502A or 502-35638	58-01-0376	

00 0

EXAMPLE:

Component Parts (Small #)
Are Included When Ordering
The Assembly (Large #).

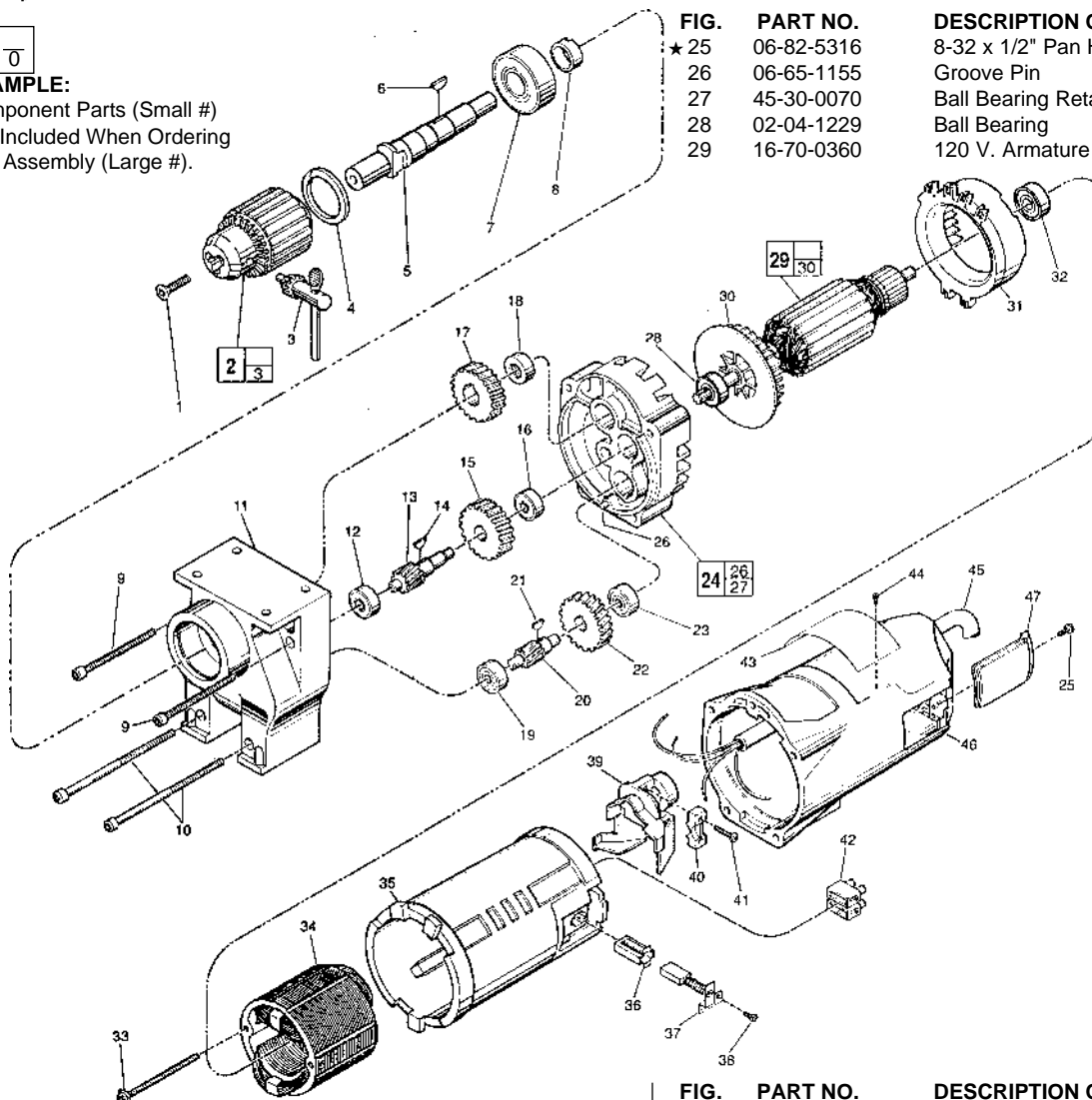


FIG.	PART NO.	DESCRIPTION OF PART	NO REQ.
★ 25	06-82-5316	8-32 x 1/2" Pan Hd. Sl. Tap. T-20	(2)
26	06-65-1155	Groove Pin	(1)
27	45-30-0070	Ball Bearing Retaining Slug (Not Shown)	(2)
28	02-04-1229	Ball Bearing	(1)
29	16-70-0360	120 V. Armature	(1)

FIG.	PART NO.	DESCRIPTION OF PART	NO REQ.
1	06-81-3100	5/16-18 x 1" Skt. Hd. Screw	(1)
2	48-66-2085	3/4" Chuck	(1)
3	48-66-3160	Chuck Key	(1)
4	34-80-3800	Retaining Ring	(1)
5	38-50-5480	Reversing Spindle	(1)
6	06-42-2400	Woodruff Key	(1)
★ 7	02-04-2200	Ball Bearing	(1)
8	45-36-0080	Spindle Spacer	(1)
9	06-82-8550	1/4-20 x 3-1/8" Fil. Taptite T-30 Sems	(2)
10	06-82-9202	1/4-20 x 4-1/4" Fil. Taptite T-30 Sems	(2)
11	28-14-0091	Gear Case Assembly	(1)
12	02-04-1210	Ball Bearing	(1)
13	36-66-1302	Intermediate Shaft	(1)
14	06-42-2000	Woodruff Key	(1)
15	32-44-1141	Intermediate Gear	(1)
16	02-04-0910	Ball Bearing	(1)
17	32-75-1261	Spindle Gear	(1)
18	02-50-4820	Needle Bearing	(1)
19	02-04-0910	Ball Bearing	(1)
20	36-66-1251	Intermediate Shaft	(1)
21	06-42-1200	Woodruff Key	(1)
22	32-42-1201	Intermediate Gear	(1)
23	02-04-0910	Ball Bearing	(1)
24	14-13-0250	Diaphragm Assembly	(1)

FIG.	PART NO.	DESCRIPTION OF PART	NO REQ.
30	22-84-0790	Fan	(1)
31	42-14-0291	Baffle	(1)
32	02-04-1041	Ball Bearing	(1)
33	06-82-9072	10-24 x 2-1/8" Pan Hd. T-25 Sems	(2)
34	18-70-0320	120 V. Field	(1)
35	23-16-1410	Insulating Housing	(1)
36	22-20-0680	Brush Tube	(2)
37	22-18-0701	Carbon Brush Assembly	(2)
38	06-82-8835	8-32 x 5/16" Pan Hd. Sl. T-20 Sems	(2)
39	22-38-0140	Wire Trap	(1)
40	31-17-0200	Cord Clamp	(1)
41	06-82-7326	8-16 x 1" Pan Hd. Plast. Slit. T-20	(2)
42	22-56-0470	Terminal Block	(1)
★ 43	12-99-1300	Service Nameplate	(1)
44	06-85-0200	Service Nameplate Screw	(2)
45	22-64-3050	120 V. Cord Set	(1)
46	28-50-6360	Motor Housing	(1)
47	22-32-0350	Brush Cover	(2)

FIG. LUBRICATION

11 9-1/2 Oz. Type "J" Grease, No. 49-08-4220.

FIG. NOTE

9,10 Apply Blue Loctite To Threads.