



SERVICE PARTS LIST

BULLETIN NO.
54-14-1120

SPECIFY CATALOG NO. AND SERIAL NO. WHEN ORDERING PARTS		REVISED BULLETIN	DATE
1/2" POWER PACK DRILL MOTOR			April '84
CATALOG NO. 4253-1	STARTING SERIAL NO. 587-1001	WIRING INSTRUCTION	
		58-01-0402	
CAT. NO. 4253-6	START SER. NO. 587-1001	BILINGUAL LABEL 10-98-6120	

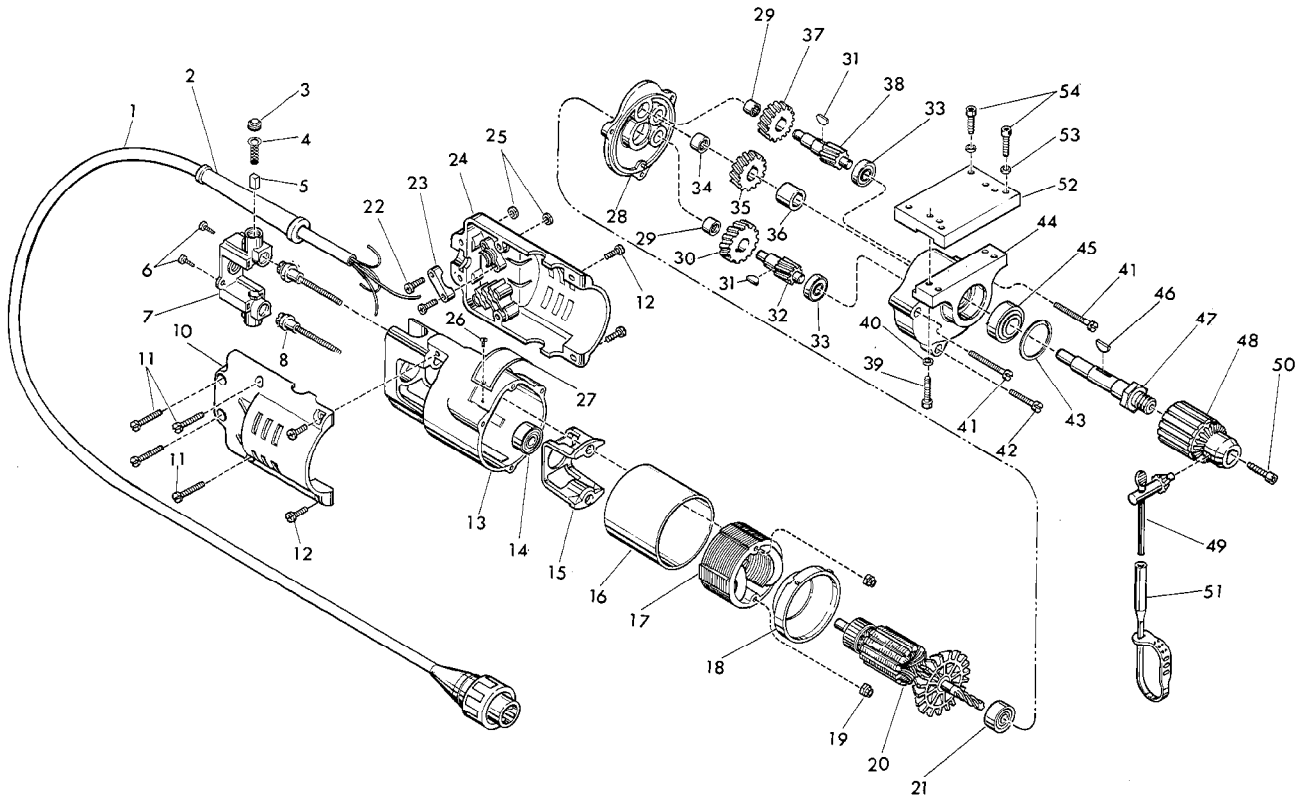


FIG.	PART NO.	DESCRIPTION OF PART	NO. REQ.	FIG.	PART NO.	DESCRIPTION OF PART	NO. REQ.
1	22-64-0760	Cord Set	(1)	30	32-40-1241	Intermediate Gear	(1)
2	44-76-0050	Cord Protector	(1)	31	06-42-0800	Woodruff Key	(2)
3	23-44-0190	Brush Retailing Screw	(2)	32	36-66-2801	Intermediate Shaft	(1)
4	23-52-0160	Brush Spring	(2)	33	02-04-0640	Ball Bearing	(2)
5	22-16-0275	Carbon Brush	(2)	34	02-50-2110	Needle Bearing	(1)
6	06-95-0116	6-32 x 5/8" Pan Hd. Taptite Screw	(2)	35	32-75-2061	Spindle Gear	(1)
7	22-22-1330	Brush Holder Assembly	(1)	36	45-36-0210	Spindle Gear Spacer	(1)
8	06-81-1058	Insulated Field Bolt	(2)	37	32-75-2041	Spindle Gear	(1)
10	31-15-0120	Cover Half	(1)	38	36-66-2901	Intermediate Shaft	(1)
11	06-81-0425	8-32x7/8 Pan Hd Screw	(4)	39	06-75-3090	1/4-20x7/8 Skt Hd Screw	(4)
12	06-95-0700	8-32 x 1/2" Pan Hd. Taptite Screw	(4)	40	06-97-4050	1/4 Lock Washer	(4)
13	28-50-6147	Motor Housing	(1)	41	06-81-6707	8-32x1-7/8 Fil Hd Sem	(2)
14	02-04-0891	Ball Bearing	(1)	42	06-81-6402	8-32x1-1/8 Fil Hd Sem	(1)
15	31-55-0030	Coil Shield	(1)	43	34-80-2500	Retaining Ring	(1)
16	23-16-0456	Field Insulator	(1)	44	28-14-0761	Gear Case	(1)
17	18-30-0100	120V Field	(1)	45	02-04-1560	Ball Bearing	(1)
18	31-05-0050	Baffle	(1)	46	06-42-1600	Woodruff Key	(1)
19	06-57-2975	8-32 Flexlock Nut	(2)	47	38-50-3651	Spindle	(1)
20	16-30-0220	120V Armature	(1)	48	48-66-1360	1/2" Chuck (Includes Fig. No. 49)	(1)
21	02-04-0940	Ball Bearing	(1)	49	48-66-3280	Chuck Key	(1)
22	06-81-4205	6-32x3/4 Phillips Pan Hd Mach Screw	(2)	50	06-75-3150	1/4-20x1 L.H. Skt Hd Cap Screw	(1)
23	31-17-0065	Cord Clamp	(1)	51	48-66-4040	Key Holder	(1)
24	31-15-0121	Cover Half Assembly	(1)	52	42-04-0580	Adaptor Plate	(1)
25	06-55-0825	8-32 Hex Nut	(4)	53	06-97-4050	1/4 Lock Washer	(4)
26	06-85-0200	Nameplate Screw	(2)	54	06-75-3050	1/4-20x3/4 Skt Hd Screw	(4)
27	12-99-0030	Nameplate Blank	(1)	► 55	12-98-7082	Caution Plate (Not Shown)	(1)
28	28-28-0662	Diaphragm (Includes 06-65-0825 Groove Pin)	(1)				
29	02-50-1640	Needle Bearing	(2)				

► Omit for Canadian Tools



SERVICE PARTS LIST

BULLETIN NO.
54-14-1121

SPECIFY CATALOG NO. AND SERIAL NO. WHEN ORDERING PARTS		REVISED BULLETIN 54-14-1120	DATE May '84
1/2" POWER PACK DRILL MOTOR			
CATALOG NO. 4253-1	STARTING SERIAL NO. 587-6000	WIRING INSTRUCTION 58-01-0402	
CAT. NO. 4253-6	START SER. NO. 587-6000	BILINGUAL LABEL 10-98-6120	

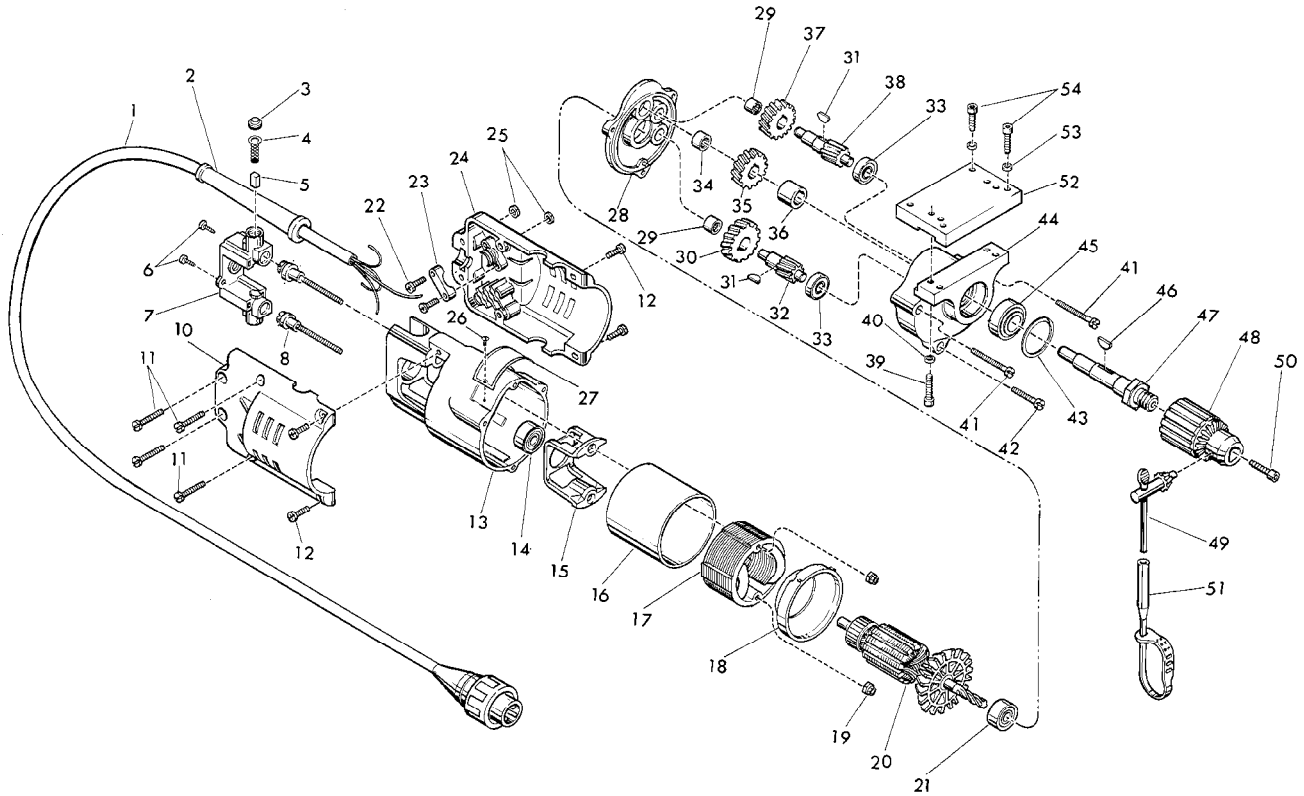


FIG.	PART NO.	DESCRIPTION OF PART	NO. REQ.	FIG.	PART NO.	DESCRIPTION OF PART	NO. REQ.
1	22-64-0760	Cord Set	(1)	30	32-40-1241	Intermediate Gear	(1)
2	44-76-0050	Cord Protector	(1)	31	06-42-0800	Woodruff Key	(2)
3	23-44-0190	Brush Retailing Screw	(2)	32	36-66-2801	Intermediate Shaft	(1)
4	23-52-0160	Brush Spring	(2)	33	02-04-0640	Ball Bearing	(2)
5	22-16-0275	Carbon Brush	(2)	34	02-50-2110	Needle Bearing	(1)
★ 6	06-95-0075	6-32 x 3/8 Trus Hd. Taptite Screw	(2)	35	32-75-2061	Spindle Gear	(1)
7	22-22-1330	Brush Holder Assembly	(1)	36	45-36-0210	Spindle Gear Spacer	(1)
8	06-81-1058	Insulated Field Bolt	(2)	37	32-75-2041	Spindle Gear	(1)
➤ 9	12-98-7082	Caution Plate (Not Shown)	(1)	38	36-66-2901	Intermediate Shaft	(1)
10	31-15-0120	Cover Half	(1)	39	06-75-3090	1/4-20x7/8 Skt Hd Screw	(4)
11	06-81-0425	8-32x7/8 Pan Hd Screw	(4)	40	06-97-4050	1/4 Lock Washer	(4)
12	06-95-0700	8-32 x 1/2" Pan Hd. Taptite Screw	(4)	★ 41	06-95-5270	8-32x1-7/8 Fil Hd Sem	(2)
★ 13	28-50-6201	Motor Housing	(1)	★ 42	06-95-5250	8-32x1-1/8 Fil Hd Sem	(1)
★ 14	02-04-0845	Ball Bearing	(1)	43	34-80-2500	Retaining Ring	(1)
15	31-55-0030	Coil Shield	(1)	44	28-14-0761	Gear Case	(1)
16	23-16-0456	Field Insulator	(1)	45	02-04-1560	Ball Bearing	(1)
17	18-30-0100	120V Field	(1)	46	06-42-1600	Woodruff Key	(1)
18	31-05-0050	Baffle	(1)	47	38-50-3651	Spindle	(1)
19	06-57-2975	8-32 Flexlock Nut	(2)	48	48-66-1360	1/2" Chuck (Includes Fig. No. 49)	(1)
★ 20	16-30-0225	120V Armature	(1)	49	48-66-3280	Chuck Key	(1)
★ 21	02-04-0911	Ball Bearing	(1)	50	06-75-3150	1/4-20x1 L.H. Skt Hd Cap Screw	(1)
22	06-81-4205	6-32x3/4 Phillips Pan Hd Mach Screw	(2)	51	48-66-4040	Key Holder	(1)
23	31-17-0065	Cord Clamp	(1)	52	42-04-0580	Adaptor Plate	(1)
24	31-15-0121	Cover Half Assembly	(1)	53	06-97-4050	1/4 Lock Washer	(4)
25	06-55-0825	8-32 Hex Nut	(4)	54	06-75-3050	1/4-20x3/4 Skt Hd Screw	(4)
26	06-85-0200	Nameplate Screw	(2)				
27	12-99-0030	Nameplate Blank	(1)				
28	28-28-0662	Diaphragm (Includes 06-65-0825 Groove Pin)	(1)				
29	02-50-1640	Needle Bearing	(2)				

➤ Omit for Canadian Tools



SERVICE PARTS LIST

BULLETIN NO.
54-14-1122

SPECIFY CATALOG NO. AND SERIAL NO. WHEN ORDERING PARTS		REVISED BULLETIN 54-14-1121	DATE Sept. '90
1/2" POWER PACK DRILL MOTOR			
CATALOG NO. 4253-1	STARTING SERIAL NO. 587-8100	WIRING INSTRUCTION 58-01-0402	
CAT. NO.	START SER. NO.	BILINGUAL LABEL	

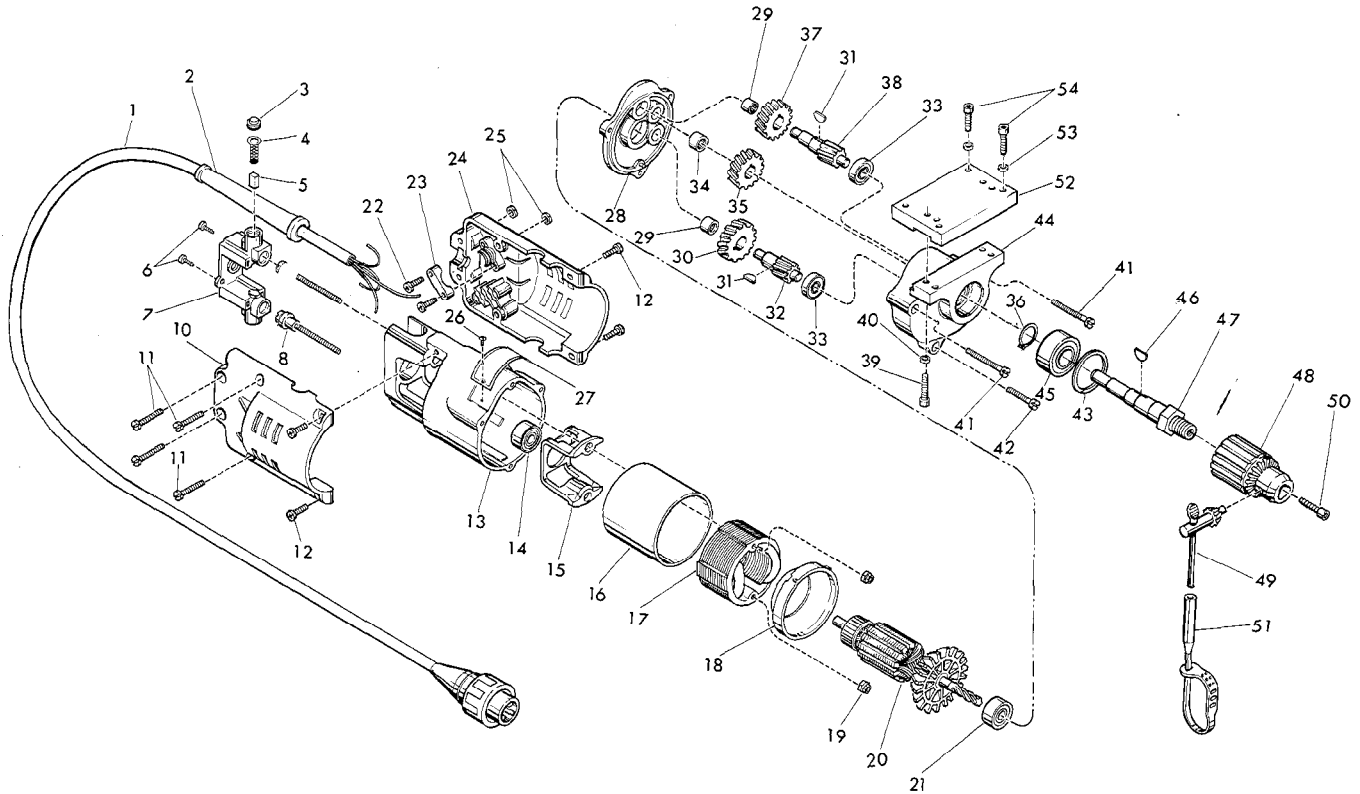


FIG.	PART NO.	DESCRIPTION OF PART	NO. REQ.	FIG.	PART NO.	DESCRIPTION OF PART	NO. REQ.
1	22-64-0760	Cord Set	(1)	30	32-40-1241	Intermediate Gear	(1)
2	44-76-0050	Cord Protector	(1)	31	06-42-0800	Woodruff Key	(2)
3	23-44-0190	Brush Retailing Screw	(2)	32	36-66-2801	Intermediate Shaft	(1)
4	23-52-0160	Brush Spring	(2)	33	02-04-0640	Ball Bearing	(2)
5	22-16-0275	Carbon Brush	(2)	★34	02-50-2440	Needle Bearing	(1)
	06-95-0075	6-32 x 3/8 Trus Hd. Taptite Screw	(2)	35	32-75-2061	Spindle Gear	(1)
	22-22-1330	Brush Holder Assembly	(1)	★36	34-60-1200	Retaining Ring	(1)
	06-81-1058	Insulated Field Bolt	(2)	37	32-75-2041	Spindle Gear	(1)
	12-98-7082	Caution Plate (Not Shown)	(1)	38	36-66-2901	Intermediate Shaft	(1)
10	31-15-0120	Cover Half	(1)	39	06-75-3090	1/4-20x7/8 Skt Hd Screw	(4)
11	06-81-0425	8-32x7/8 Pan Hd Screw	(4)	40	06-97-4050	1/4 Lock Washer	(4)
12	06-95-0700	8-32 x 1/2" Pan. Hd. Taptite Screw	(4)	41	06-95-5270	8-32x1-7/8 Fil Hd Sem	(2)
13	28-50-6201	Motor Housing	(1)	42	06-95-5250	8-32x1-1/8 Fil Hd Sem	(1)
14	02-04-0845	Ball Bearing	(1)	43	34-80-2500	Retaining Ring	(1)
15	31-55-0030	Coil Shield	(1)	44	28-14-0761	Gear Case	(1)
16	23-16-0456	Field Insulator	(1)	★45	02-04-1536	Ball Bearing	(1)
17	18-30-0100	120V Field	(1)	46	06-42-1600	Woodruff Key	(1)
18	31-05-0050	Baffle	(1)	★47	38-50-5470	Spindle	(1)
19	06-57-2975	8-32 Flexlock Nut	(2)	48	48-66-1360	1/2" Chuck (Includes Fig. No. 49)	(1)
20	16-30-0225	120V Armature	(1)	49	48-66-3280	Chuck Key	(1)
21	02-04-0911	Ball Bearing	(1)	50	06-75-3150	1/4-20x1 L.H. Skt Hd Cap Screw	(1)
22	06-81-4205	6-32x3/4 Phillips Pan Hd Mach Screw	(2)	51	48-66-4040	Key Holder	(1)
23	31-17-0065	Cord Clamp	(1)	52	42-04-0580	Adaptor Plate	(1)
24	31-15-0121	Cover Half Assembly	(1)	53	06-97-4050	1/4 Lock Washer	(4)
25	06-55-0825	8-32 Hex Nut	(4)	54	06-75-3050	1/4-20x3/4 Skt Hd Screw	(4)
26	06-85-0200	Nameplate Screw	(2)				
27	12-99-0030	Nameplate Blank	(1)				
28	28-28-0662	Diaphragm (Includes 06-65-0825 Groove Pin)	(1)				
29	02-50-1640	Needle Bearing	(2)				



SERVICE PARTS LIST

BULLETIN NO.
54-14-1123

SPECIFY CATALOG NO. AND SERIAL NO. WHEN ORDERING PARTS				REVISED BULLETIN	DATE
1/2" POWER PACK DRILL MOTOR				54-14-1122	Dec. 2009
CATALOG NO.	4253-1	STARTING SERIAL NO.	587A	WIRING INSTRUCTION 58-01-0402	

00 0

EXAMPLE:
Component Parts (Small #) Are Included
When Ordering The Assembly (Large #).

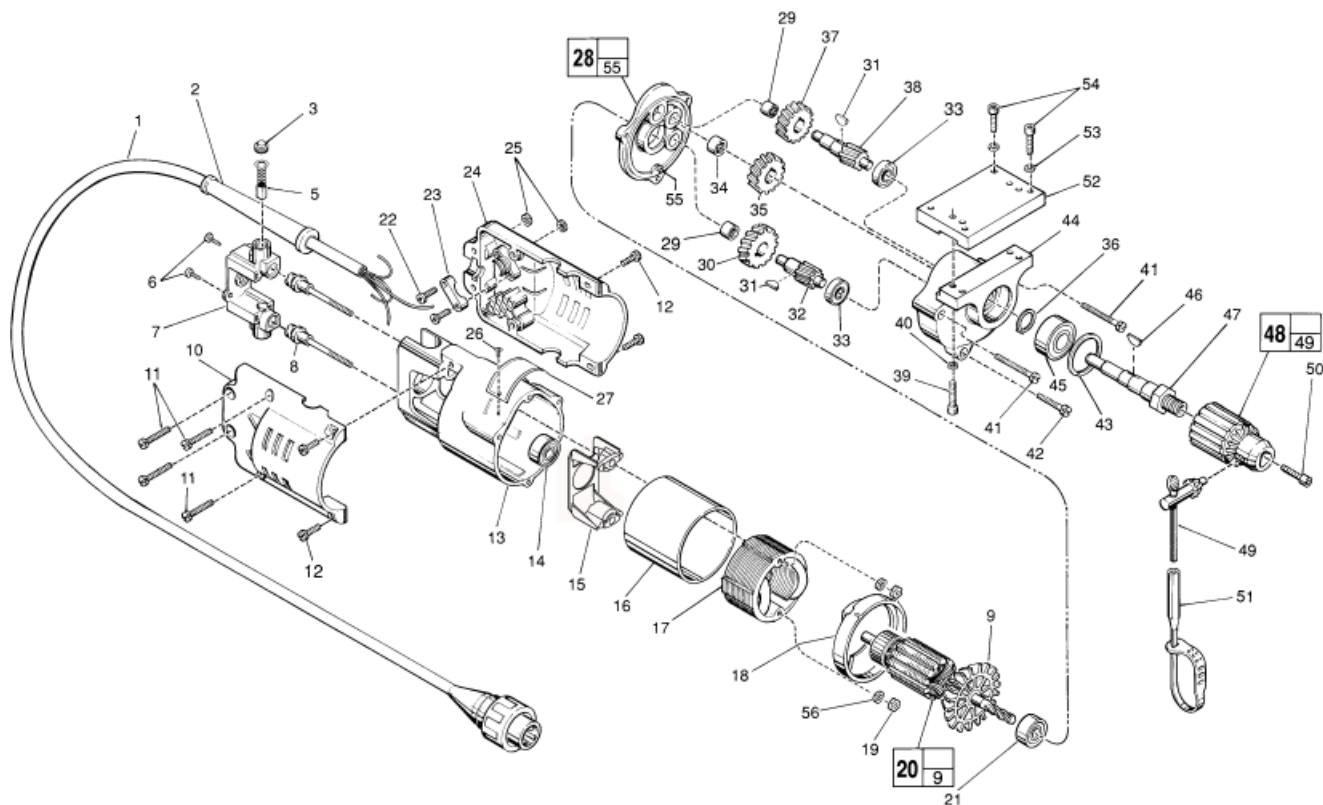


FIG.	PART NO.	DESCRIPTION OF PART	NO. REQ.
	1	22-64-0760 Cord Set	(1)
	2	44-76-0050 Cord Protector	(1)
	3	23-44-0190 Brush Retaining Screw	(2)
★	5	22-18-0910 Carbon Brush Assembly	(2)
	6	06-95-0075 6-32 x 3/8" Truss Hd. Taptite Screw	(2)
★	7	22-22-1380 Brush Holder Assembly	(1)
★	8	06-81-1060 Insulated Field Bolt	(2)
	9	22-84-0531 Fan	(1)
	10	31-15-0120 Cover Half	(1)
	11	06-81-0425 8-32 x 7/8" Pan Hd. Screw	(4)
★	12	06-82-5316 8-32 x 1/2" Pan Hd. Slit. Taptite T-20	(4)
★	13	28-50-6220 Motor Housing	(1)
	14	02-04-0845 Ball Bearing	(1)
★	15	31-55-0190 Coil Shield	(1)
	16	23-16-0456 Field Insulator	(1)
	17	18-30-0100 120 Volt Field	(1)
★	18	31-05-0055 Baffle	(1)
★	19	06-55-0825 8-32 UNC-2B Hex Nut	(2)
	20	16-30-0225 120 Volt Armature	(1)
	21	02-04-0911 Ball Bearing	(1)
	22	06-81-4205 6-32 x 3/4" Pan Hd. Phillips Mach. Scr.	(2)
	23	31-17-0065 Cord Clamp	(1)
	24	31-15-0121 Cover Half Assembly	(1)
	25	06-55-0825 8-32 Hex Nut	(4)
★	26	06-72-1720 Nameplate Rivet	(2)
★	27	12-99-1305 Service Nameplate	(1)
★	28	28-28-0611 Diaphragm	(1)
	29	02-50-1640 Needle Bearing	(2)
	30	32-40-1241 Intermediate Gear	(1)
	31	06-42-0800 Woodruff Key	(2)
	32	36-66-2801 Intermediate Shaft	(1)

FIG.	PART NO.	DESCRIPTION OF PART	NO. REQ.
	33	02-04-0640 Ball Bearing	(2)
	34	02-50-2440 Needle Bearing	(1)
	35	32-75-2061 Spindle Gear	(1)
	36	34-60-1200 Retaining Ring	(1)
	37	32-75-2041 Spindle Gear	(1)
	38	36-66-2901 Intermediate Shaft	(1)
	39	06-75-3090 1/4-20 x 7/8" Socket Hd. Screw	(4)
	40	06-97-4050 1/4" Lockwasher	(4)
★	41	06-82-3210 8-32 x 1-7/8" Fil. Hd. Taptite T-20	(2)
	42	06-95-5250 8-32 x 1-1/8" Fil. Hd. Sems	(1)
	43	34-80-2500 Retaining Ring	(1)
	44	28-14-0761 Gear Case	(1)
	45	02-04-1536 Ball Bearing	(1)
	46	06-42-1600 Woodruff Key	(1)
	47	38-50-5470 Spindle	(1)
	48	48-66-1360 1/2" Chuck	(1)
	49	48-66-3280 Chuck Key	(1)
	50	06-75-3150 1/4-20 x 1" L.H. Skt.Hd. Cap Screw	(1)
	51	48-66-4040 Key Holder	(1)
	52	42-04-0580 Adaptor Plate	(1)
	53	06-97-4050 1/4" Lockwasher	(4)
	54	06-75-3050 1/4-20 x 3/4" Socket Hd. Screw	(4)
	55	06-65-0825 Groove Pin	(1)
★	56	45-88-0765 Nord-Lock Washer	(2)

FIG. LUBRICATION

44 3-1/4 Oz. Type "A" Grease, No. 49-08-0800



SERVICE PARTS LIST

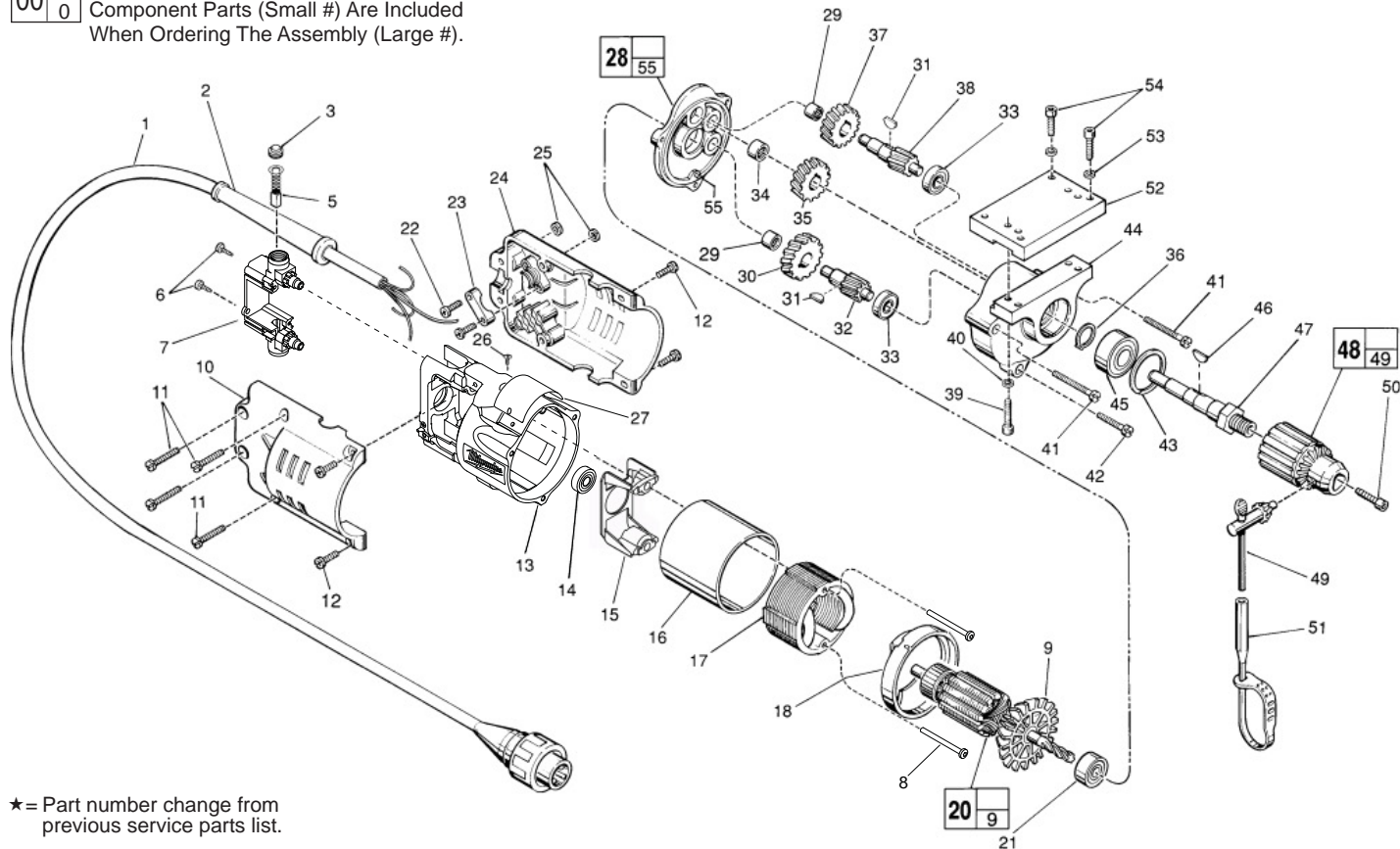
BULLETIN NO.
54-14-1124

SPECIFY CATALOG NO. AND SERIAL NO. WHEN ORDERING PARTS				REVISED BULLETIN	DATE
1/2" POWER PACK DRILL MOTOR				54-14-1123	Mar. 2012
CATALOG NO.	4253-1	STARTING SERIAL NO.	587B	WIRING INSTRUCTION 58-01-0402	

00
0

EXAMPLE:

Component Parts (Small #) Are Included
When Ordering The Assembly (Large #).



★ = Part number change from previous service parts list.

FIG.	PART NO.	DESCRIPTION OF PART	NO. REQ.	FIG.	PART NO.	DESCRIPTION OF PART	NO. REQ.
1	22-64-0760	Cord Set	(1)	33	02-04-0640	Ball Bearing	(2)
2	44-76-0050	Cord Protector	(1)	34	02-50-2440	Needle Bearing	(1)
3	23-44-0190	Brush Retaining Screw	(2)	35	32-75-2061	Spindle Gear	(1)
5	22-18-0910	Carbon Brush Assembly	(2)	36	34-60-1200	Retaining Ring	(1)
6	06-95-0075	6-32 x 3/8" Truss Hd. Taptite Screw	(2)	37	32-75-2041	Spindle Gear	(1)
★ 7	22-22-1381	Brush Holder Assembly	(1)	38	36-66-2901	Intermediate Shaft	(1)
★ 8	06-82-7380	7-18 x 1.875" Pan Hd. Plast. T-20	(2)	39	06-75-3090	1/4-20 x 7/8" Socket Hd. Screw	(4)
9	22-84-0531	Fan	(1)	40	06-97-4050	1/4" Lockwasher	(4)
10	31-15-0120	Cover Half	(1)	41	06-82-3210	8-32 x 1-7/8" Fil. Hd. Taptite T-20	(2)
11	06-81-0425	8-32 x 7/8" Pan Hd. Screw	(4)	42	06-95-5250	8-32 x 1-1/8" Fil. Hd. Sems	(1)
12	06-82-5316	8-32 x 1/2" Pan Hd. Slit. Taptite T-20	(4)	43	34-80-2500	Retaining Ring	(1)
★ 13	28-50-6222	Motor Housing	(1)	44	28-14-0761	Gear Case	(1)
14	02-04-0845	Ball Bearing	(1)	45	02-04-1536	Ball Bearing	(1)
15	31-55-0190	Coil Shield	(1)	46	06-42-1600	Woodruff Key	(1)
16	23-16-0456	Field Insulator	(1)	47	38-50-5470	Spindle	(1)
17	18-30-0100	120 Volt Field	(1)	48	48-66-1360	1/2" Chuck	(1)
18	31-05-0055	Baffle	(1)	49	48-66-3280	Chuck Key	(1)
20	16-30-0225	120 Volt Armature	(1)	50	06-75-3150	1/4-20 x 1" L.H. Skt.Hd. Cap Screw	(1)
21	02-04-0911	Ball Bearing	(1)	51	48-66-4040	Key Holder	(1)
22	06-81-4205	6-32 x 3/4" Pan Hd. Phillips Mach. Scr.	(2)	52	42-04-0580	Adaptor Plate	(1)
23	31-17-0065	Cord Clamp	(1)	53	06-97-4050	1/4" Lockwasher	(4)
24	31-15-0121	Cover Half Assembly	(1)	54	06-75-3050	1/4-20 x 3/4" Socket Hd. Screw	(4)
25	06-55-0825	8-32 Hex Nut	(4)	55	06-65-0825	Groove Pin	(1)
26	06-72-1720	Nameplate Rivet	(2)				
27	12-99-1305	Service Nameplate	(1)				
28	28-28-0611	Diaphragm	(1)				
29	02-50-1640	Needle Bearing	(2)				
30	32-40-1241	Intermediate Gear	(1)				
31	06-42-0800	Woodruff Key	(2)				
32	36-66-2801	Intermediate Shaft	(1)				

FIG. LUBRICATION

44 3-1/4 Oz. Type "A" Grease, No. 49-08-0800