



SERVICE PARTS LIST

BULLETIN NO.
54-46-1300

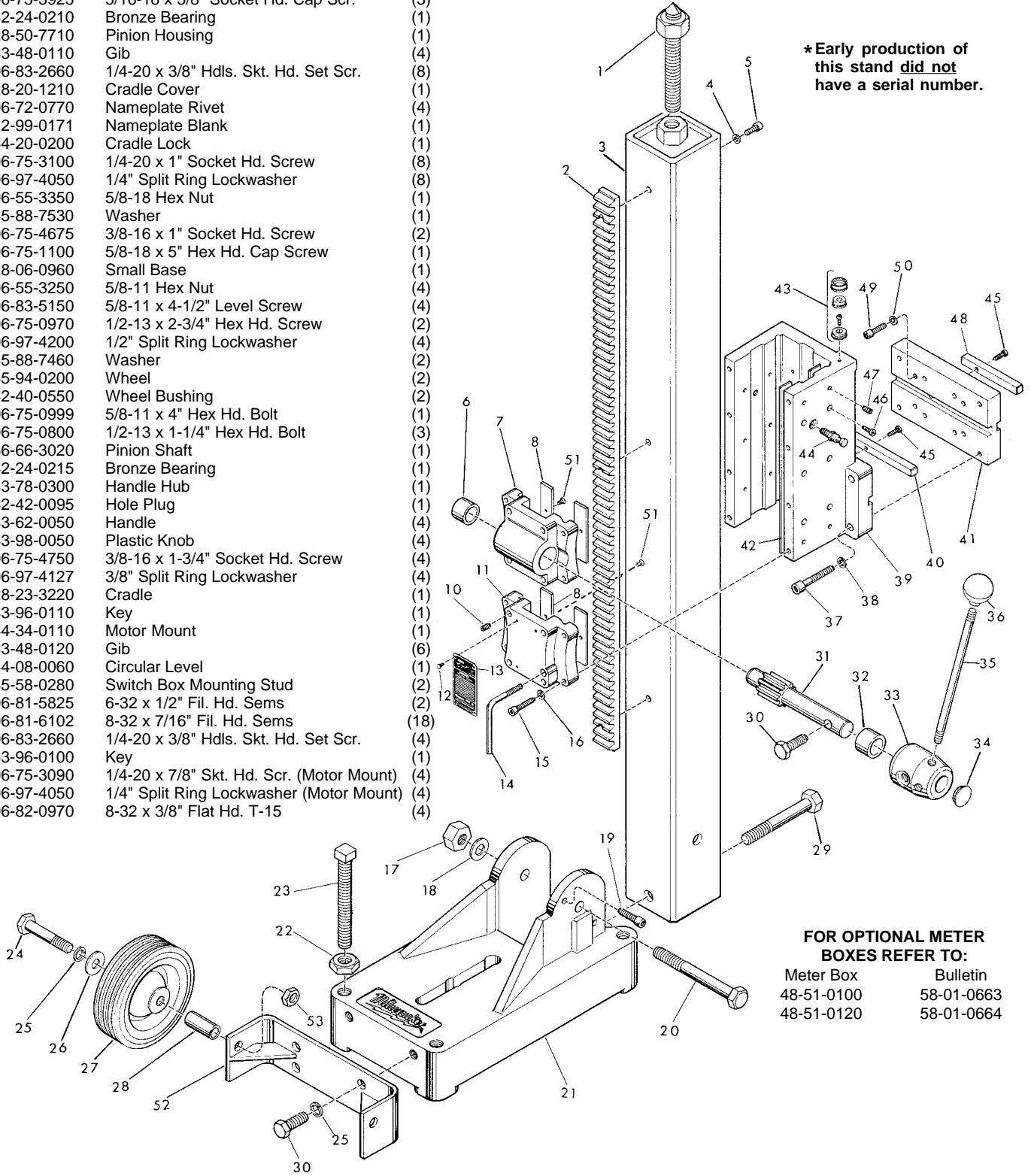
SPECIFY CATALOG NO. AND SERIAL NO. WHEN ORDERING PARTS		REVISED BULLETIN
SMALL BASE DYMORIG		
CATALOG NO. 4125	STARTING SERIAL NO. A10A*	WIRING INSTRUCTION

EXAMPLE:

00 0
Component Parts (Small #) Are Included
When Ordering The Assembly (Large #).

FIG.	PART NO.	DESCRIPTION OF PART	NO. REQ.
1	45-04-0535	Jack Screw Assembly	(1)
2	44-80-0170	Rack	(1)
3	42-78-0090	Column Assembly	(1)
4	06-97-4110	5/16" Split Ring Lockwasher	(3)
5	06-75-3925	5/16-18 x 5/8" Socket Hd. Cap Scr.	(3)
6	42-24-0210	Bronze Bearing	(1)
7	28-50-7710	Pinion Housing	(1)
8	43-48-0110	Gib	(4)
10	06-83-2660	1/4-20 x 3/8" Hdls. Skt. Hd. Set Scr.	(8)
11	28-20-1210	Cradle Cover	(1)
12	06-72-0770	Nameplate Rivet	(4)
13	12-99-0171	Nameplate Blank	(1)
14	44-20-0200	Cradle Lock	(1)
15	06-75-3100	1/4-20 x 1" Socket Hd. Screw	(8)
16	06-97-4050	1/4" Split Ring Lockwasher	(8)
17	06-55-3350	5/8-18 Hex Nut	(1)
18	45-88-7530	Washer	(1)
19	06-75-4675	3/8-16 x 1" Socket Hd. Screw	(2)
20	06-75-1100	5/8-18 x 5" Hex Hd. Cap Screw	(1)
21	28-06-0960	Small Base	(1)
22	06-55-3250	5/8-11 Hex Nut	(4)
23	06-83-5150	5/8-11 x 4-1/2" Level Screw	(4)
24	06-75-0970	1/2-13 x 2-3/4" Hex Hd. Screw	(2)
25	06-97-4200	1/2" Split Ring Lockwasher	(4)
26	45-88-7460	Washer	(2)
27	45-94-0200	Wheel	(2)
28	42-40-0550	Wheel Bushing	(2)
29	06-75-0999	5/8-11 x 4" Hex Hd. Bolt	(1)
30	06-75-0800	1/2-13 x 1-1/4" Hex Hd. Bolt	(3)
31	36-66-3020	Pinion Shaft	(1)
32	42-24-0215	Bronze Bearing	(1)
33	43-78-0300	Handle Hub	(1)
34	42-42-0095	Hole Plug	(1)
35	43-62-0050	Handle	(4)
36	43-98-0050	Plastic Knob	(4)
37	06-75-4750	3/8-16 x 1-3/4" Socket Hd. Screw	(4)
38	06-97-4127	3/8" Split Ring Lockwasher	(4)
39	28-23-3220	Cradle	(1)
40	43-96-0110	Key	(1)
41	44-34-0110	Motor Mount	(1)
42	43-48-0120	Gib	(6)
43	44-08-0060	Circular Level	(1)
44	45-58-0280	Switch Box Mounting Stud	(2)
45	06-81-5825	6-32 x 1/2" Fil. Hd. Sems	(2)
46	06-81-6102	8-32 x 7/16" Fil. Hd. Sems	(18)
47	06-83-2660	1/4-20 x 3/8" Hdls. Skt. Hd. Set Scr.	(4)
48	43-96-0100	Key	(1)
49	06-75-3090	1/4-20 x 7/8" Skt. Hd. Scr. (Motor Mount)	(4)
50	06-97-4050	1/4" Split Ring Lockwasher (Motor Mount)	(4)
51	06-82-0970	8-32 x 3/8" Flat Hd. T-15	(4)

*Early production of this stand did not have a serial number.



FOR OPTIONAL METER BOXES REFER TO:

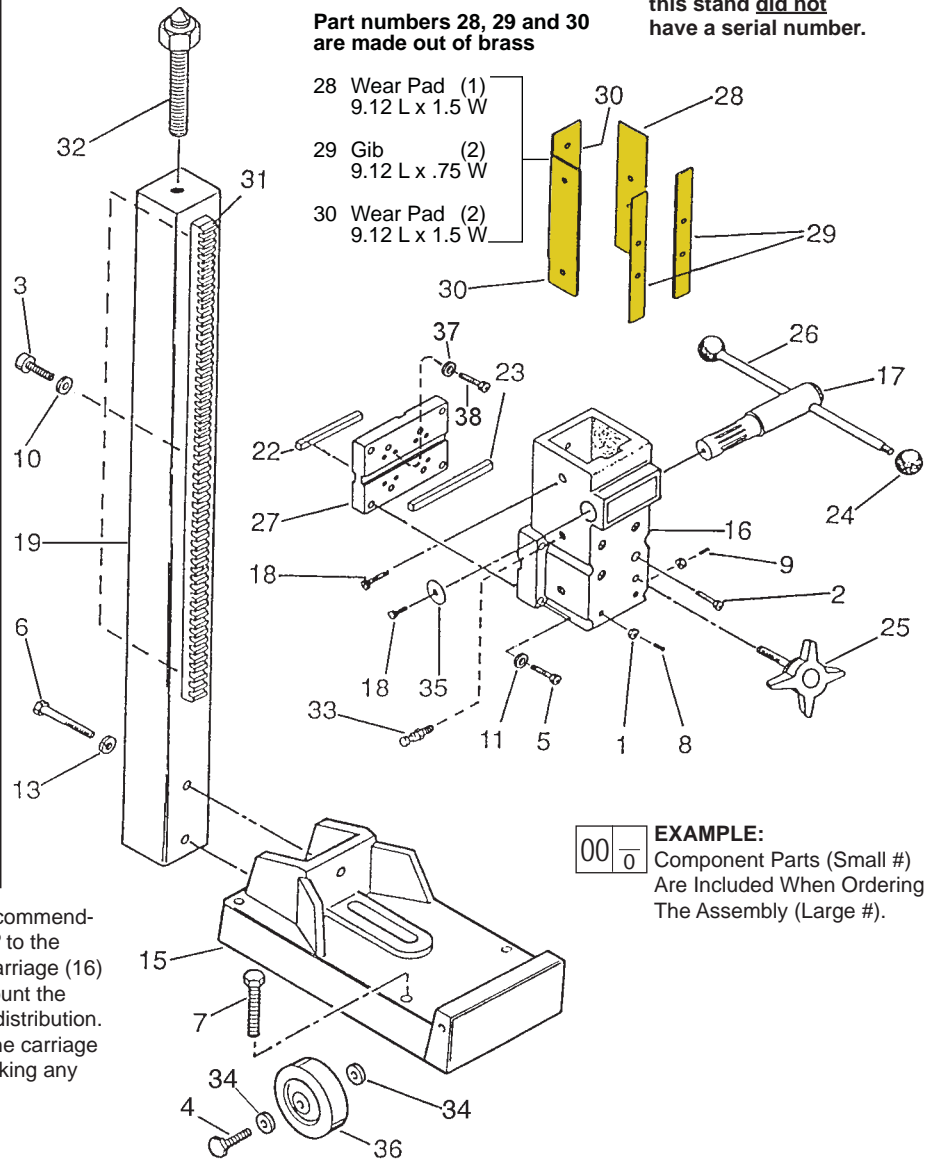
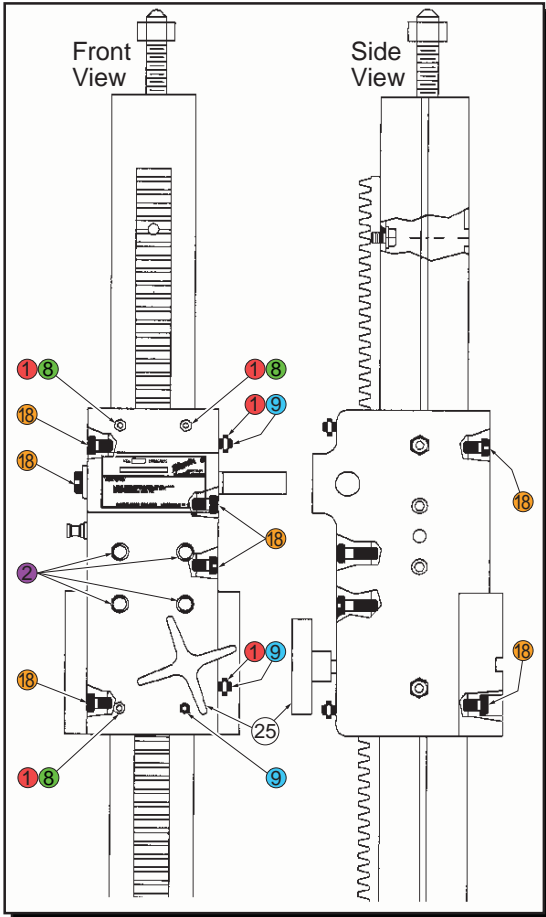
Meter Box	Bulletin
48-51-0100	58-01-0663
48-51-0120	58-01-0664



SERVICE PARTS LIST

BULLETIN NO.
54-46-1325

SPECIFY CATALOG NO. AND SERIAL NO. WHEN ORDERING PARTS			REVISED BULLETIN
SMALL BASE DYMORIG			
CATALOG NO.	4115	STARTING SERIAL NO.	A08A*
			WIRING INSTRUCTION



To properly install Wear Pads and Gibs (28,29,30), it is recommended to clean Fasteners (2,8,9,18) and to apply Red Loctite® to the threads. Once the wear pads and gibs are in place, the Carriage (16) has to be adjusted to the Column (19). It is beneficial to mount the drill motor to the stand for proper carriage/column weight distribution. Carriage Screw (25) can be tightened slightly to prevent the carriage and drill motor from traveling down the column prior to making any screw adjustments.

FIG.	PART NO.	DESCRIPTION OF PART	NO. REQ.	FIG.	PART NO.	DESCRIPTION OF PART	NO. REQ.
1	06-55-1525	1/4-20 Hex Nut	(5)	25	43-98-0525	Carriage Screw	(1)
2	06-75-3050	1/4-20 x 3/4" Socket Hd. Screw	(4)	26	44-10-0365	Bar Handle	(1)
3	06-75-3920	5/16-18 Socket Hd. Screw	(3)	27	44-34-0190	Motor Mount	(1)
4	06-75-0970	1/2" Hex Hd. Cap Screw	(2)	28	44-52-0605	Wear Pad	(1)
5	06-75-5840	3/8-16 Socket Hd. Cap Screw	(4)	* 29	45-52-0665	Gib	(2)
6	06-75-5845	5/8-11 Hex Hd. Cap Screw	(2)	* 30	44-52-0675	Wear Pad	(2)
* 7	06-83-5150	5/8-11 x 4-1/2" Hex Head Cap Screw	(4)	31	44-80-0175	Rack	(1)
8	06-83-6010	1/4-20 x 1-1/2" Set Screw	(3)	32	45-04-0535	Jack Screw Assembly	(1)
9	06-83-6020	1/4-20 x 1" Set Screw	(3)	33	45-58-0280	Mounting Stud	(1)
10	06-97-4110	5/16" Split Ring Lockwasher	(3)	34	45-88-7460	1/2" Flat Washer	(4)
11	06-97-4127	Lockwasher	(4)	35	45-88-8675	Shaft Washer	(1)
13	06-97-4400	5/8" Split Ring Lockwasher	(2)	36	45-94-0135	Wheel	(2)
14	12-99-1310	Nameplate Blank	(1)	* 37	06-97-4050	1/4" Lockwasher	(4)
15	28-06-1110	Small Base	(1)	* 38	06-75-3090	1/4-20 x 7/8" Screw	(4)
* 16	28-23-3415	Carriage	(1)		49-96-0060	1/8" Hex Key	(1)
17	36-66-4620	Pinion Shaft	(1)		49-96-0080	3/16" Hex Key	(1)
18	06-75-2950	1/4-20 x 1/2" Socket Hd. Cap Screw	(7)		49-96-0120	5/16" Hex Key	(1)
19	42-78-0050	Column	(1)				
22	43-96-0200	3/8 x 3/8 x 3" Key	(1)				
23	43-96-0210	3/8 x 3/8 x 5" Key	(1)				
24	43-98-0050	Plastic Knob	(2)				



SERVICE PARTS LIST

BULLETIN NO.
55-46-1325

SPECIFY CATALOG NO. AND SERIAL NO. WHEN ORDERING PARTS		REVISED BULLETIN	
SMALL BASE DYMORIG			
CATALOG NO. 4115-50	STARTING SERIAL NO.	A08A*	
		WIRING INSTRUCTION	

EXAMPLE:



Component Parts (Small #)
Are Included When Ordering
The Assembly (Large #).

***Early production of
this stand did not
have a serial number.**

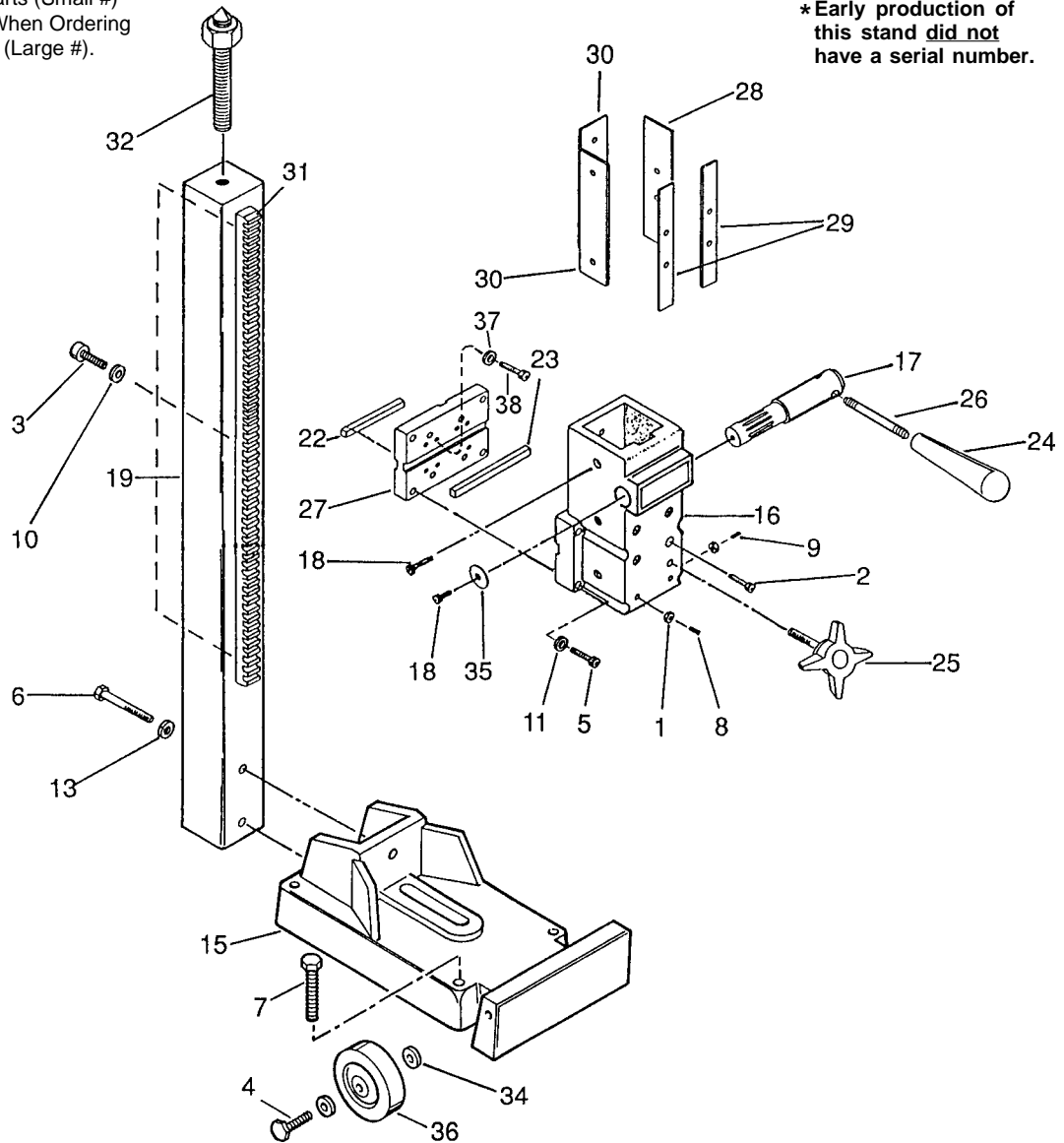


FIG.	PART NO.	DESCRIPTION OF PART	NO. REQ.	FIG.	PART NO.	DESCRIPTION OF PART	NO. REQ.
1	06-55-1525	1/4-20 Hex Nut	(5)	25	43-98-0525	Carriage Screw	(1)
2	06-75-3050	1/4-20 x 3/4" Socket Hd. Screw	(4)	26	44-10-0385	Bar Handle	(3)
3	06-75-3920	5/16-18 Socket Hd. Screw	(3)	27	44-34-0190	Motor Mount	(1)
4	06-75-0970	1/2" Hex Hd. Cap Screw	(2)	28	44-52-0605	Wear Pad	(1)
5	06-75-5840	3/8-16 Socket Hd. Cap Screw	(4)	29	44-52-0665	Gib	(2)
6	06-75-5845	5/8-11 Hex Hd. Cap Screw	(2)	30	44-52-0675	Wear Pad	(2)
★ 7	06-83-5150	5/8-11 x 4-1/2" Hex Head Cap Screw	(4)	31	44-80-0175	Rack	(1)
8	06-83-6010	1/4-20 x 1-1/2" Set Screw	(3)	32	45-04-0535	Jack Screw Assembly	(1)
9	06-83-6020	1/4-20 x 1" Set Screw	(3)	34	45-88-7460	1/2" Flat Washer	(4)
10	06-97-4110	5/16" Split Ring Lockwasher	(3)	35	45-88-8675	Shaft Washer	(1)
11	06-97-4127	Lockwasher	(4)	36	45-94-0135	Wheel	(2)
13	06-97-4400	5/8" Split Ring Lockwasher	(2)	★ 37	06-97-4050	1/4" Lockwasher	(4)
14	12-99-1935	Nameplate Blank	(1)	★ 38	06-75-3090	1/4-20 x 7/8" Screw	(4)
15	28-06-1110	Small Base	(1)		49-96-0060	1/8" Hex Key	(1)
16	28-23-3415	Carriage	(1)		49-96-0080	3/16" Hex Key	(1)
17	36-66-4625	Pinion Shaft	(1)		49-96-0120	5/16" Hex Key	(1)
18	06-75-2950	1/4-20 x 1/2" Socket Hd. Cap Screw	(7)				
19	42-78-0050	Column	(1)				
22	43-96-0200	3/8 x 3/8 x 3" Key	(1)				
23	43-96-0210	3/8 x 3/8 x 5" Key	(1)				
24	43-98-0095	Plastic Knob	(3)				