



SERVICE PARTS LIST

BULLETIN NO.
55-16-0203

SPECIFY CATALOG NO. AND SERIAL NO. WHEN ORDERING PARTS		REVISED BULLETIN 55-16-0202	DATE Oct. '95
TWO SPEED DYMODRILL			
CATALOG NO.	4094-5	STARTING SERIAL NO.	744B
		WIRING INSTRUCTION 58-03-0020	

EXAMPLE:



Component Parts (Small #)
Are Included When Ordering
The Assembly (Large #).

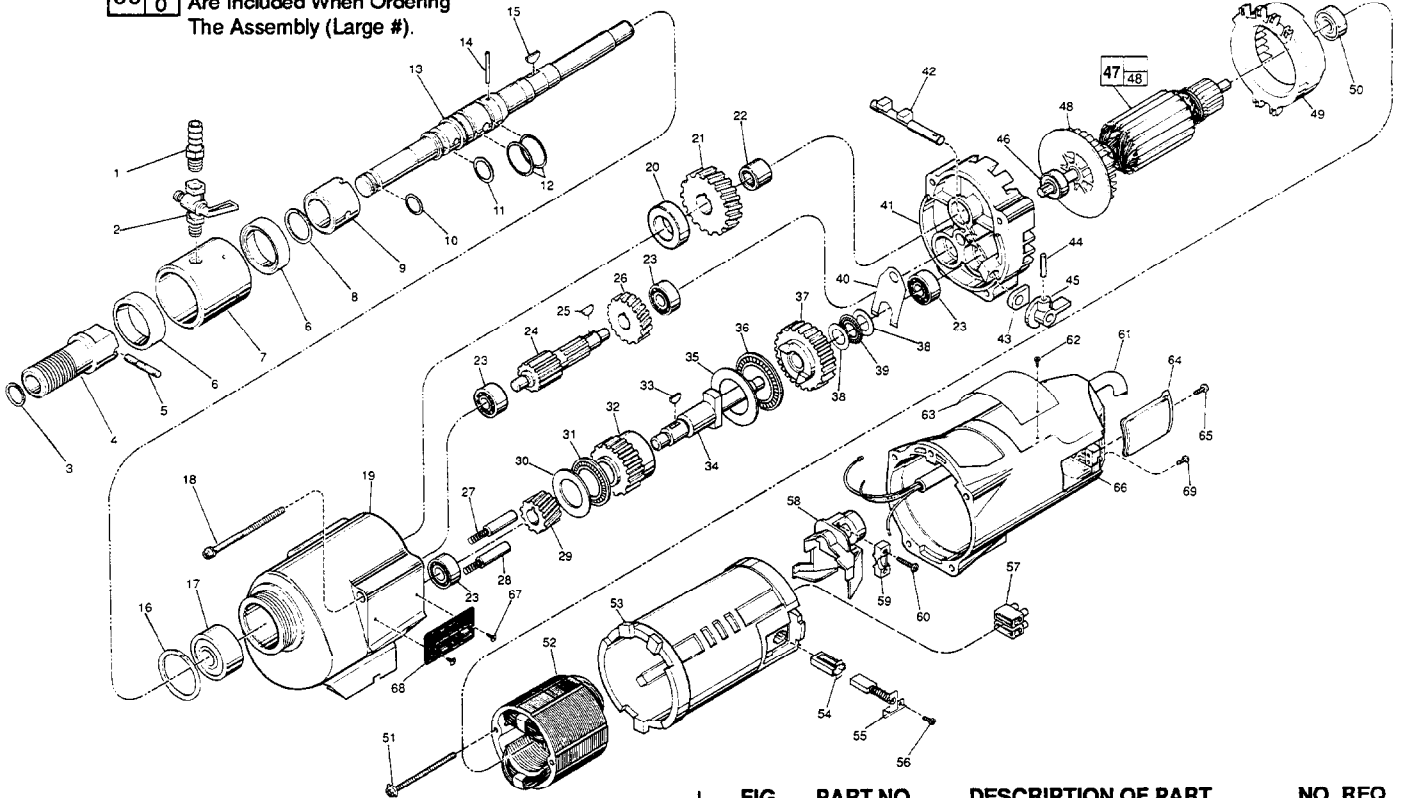


FIG.	PART NO.	DESCRIPTION OF PART	NO. REQ.
1	42-90-0200	Water Hose Fitting	(1)
2	45-80-0060	Shut Off Valve	(1)
3	34-60-1800	Retaining Ring	(1)
4	45-22-0050	Spindle Sleeve	(1)
5	44-60-0065	Shear Pin	(1)
6	45-06-0050	Trostell Seal	(2)
7	43-76-0051	Water Swivel Housing (With 06-83-2430 Scr.)	(1)
8	34-60-2115	Retaining Ring	(1)
9	42-40-0830	Spindle Bushing	(1)
10	34-40-1100	O-Ring	(1)
11	34-40-1200	O-Ring	(1)
12	34-40-1350	O-Ring	(2)
13	38-50-4555	Spindle	(1)
14	06-65-1530	1/8 x 1/2" Roll Pin	(1)
15	06-42-2400	Woodruff Key	(1)
16	34-80-3800	Retaining Ring	(1)
17	02-20-2515	Ball Bearing	(1)
18	06-82-9202	1/4-20 x 4-1/4" Tapitite T-30 Screw	(4)
19	28-14-1870	Gear Case Assy.(Inc. 06-65-1535 Pin)	(1)
20	45-36-1245	Spindle Spacer	(1)
21	32-75-2521	Spindle Gear	(1)
22	02-50-4830	Needle Bearing	(1)
23	02-04-1205	Ball Bearing	(4)
24	36-66-3751	Pinion Shaft Assy.	(1)
25	06-42-1600	Woodruff Key	(1)
26	32-40-1581	Intermediate Gear	(1)
27	40-50-6300	Shifting Spring	(2)
28	44-70-0100	Shifting Plunger	(2)
29	32-60-1041	Pinion Gear	(1)
30	45-88-0520	Thrust Bearing Washer	(1)
31	02-80-1800	Thrust Bearing	(1)
32	32-10-0061	Clutch Gear Assembly	(1)
33	06-42-2000	Woodruff Key	(1)
34	36-14-0061	Clutch Shaft	(1)
35	45-88-0530	Thrust Bearing Washer	(1)
36	02-80-5000	Thrust Bearing	(1)
37	32-10-0051	Clutch Gear Assembly	(1)
38	45-88-0510	Thrust Bearing Washer	(2)
39	02-80-1200	Thrust Bearing	(1)
40	45-98-0090	Shifting Yoke	(1)
41	14-13-0210	Diaphragm Assy.(Inc. 06-65-1155 Pin)	(1)

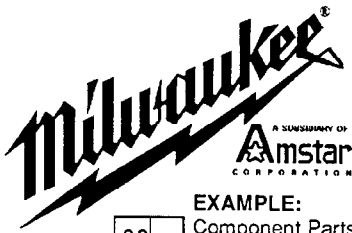
FIG.	PART NO.	DESCRIPTION OF PART	NO. REQ.
42	30-15-0272	Shift Cam	(1)
★ 43	43-44-0580	Foam Gasket	(2)
44	06-65-0840	1/8 x 3/4" Groove Pin	(1)
45	25-60-0056	Shifting Knob	(1)
46	02-04-1229	Ball Bearing	(1)
47	16-76-0325	220 V Armature	(1)
48	22-84-0790	Fan	(1)
49	42-14-0291	Baffle	(1)
50	02-04-1041	Ball Bearing	(1)
51	06-82-9152	10-24 x 2-3/4" Pan Hd. Sem. T-25	(2)
52	18-74-0120	220 V Field	(1)
53	23-16-1410	Motor Insulator	(1)
54	22-20-0680	Brush Tube	(2)
55	22-18-0706	Carbon Brush Assembly	(2)
56	06-82-8835	8-32 x 5/16" Pan Hd. Sem. T-20	(2)
57	22-56-0470	Terminal Block	(1)
58	22-38-0140	Wire Trap	(1)
59	31-17-0200	Cord Clamp	(1)
60	06-82-7326	8-16 x 1" Pan Hd. Plastite T-20	(2)
61	23-37-0150	Control Assy.-Refer to Bull. 58-03-0020	(1)
62	06-72-1720	Service Rivet	(2)
63	12-15-7545	Service Nameplate	(1)
64	22-32-0350	Brush Cover	(2)
65	06-82-5316	8-32 x 1/2" Pan Hd. Slit. Tapitite T-20	(1)
66	28-50-6360	Motor Housing	(2)
67	06-82-5266	4-40 x 1/4" Pan Hd. Tapitite T-10 Scr.	(2)
68	12-98-3060	Instruction Plate	(1)
69	06-95-5200	8-32 x 5/16" Slot Hex Hd. Screw	(1)
	49-96-4700	1-3/8" Open End Wrench	(1)
	49-96-0085	3/16" Socket Wrench	(1)
	49-96-0050	3/32" Socket Wrench	(1)
	45-56-0210	26" Strap and Buckle	(1)

FOR MOUNTING DRILL MOTOR USE:

06-75-3090	1/4-20 x 7/8" Socket Hd. Screw	(4)
06-97-4050	1/4" Split Ring Lock Washer	(4)

FIG. LUBRICATION

19 20 Oz. Type "J" Grease, No. 49-08-4220



SERVICE PARTS LIST

BULLETIN NO.
54-16-4040

SPECIFY CATALOG NO. AND SERIAL NO. WHEN ORDERING PARTS		REVISED BULLETIN	DATE
TWO SPEED DYMODRILL			March '88
CATALOG NO. 4094	STARTING SERIAL NO. 740-1001	WIRING INSTRUCTION 58-01-0930	



EXAMPLE:
Component Parts (Small #)
Are Included When Ordering
The Assembly (Large #).

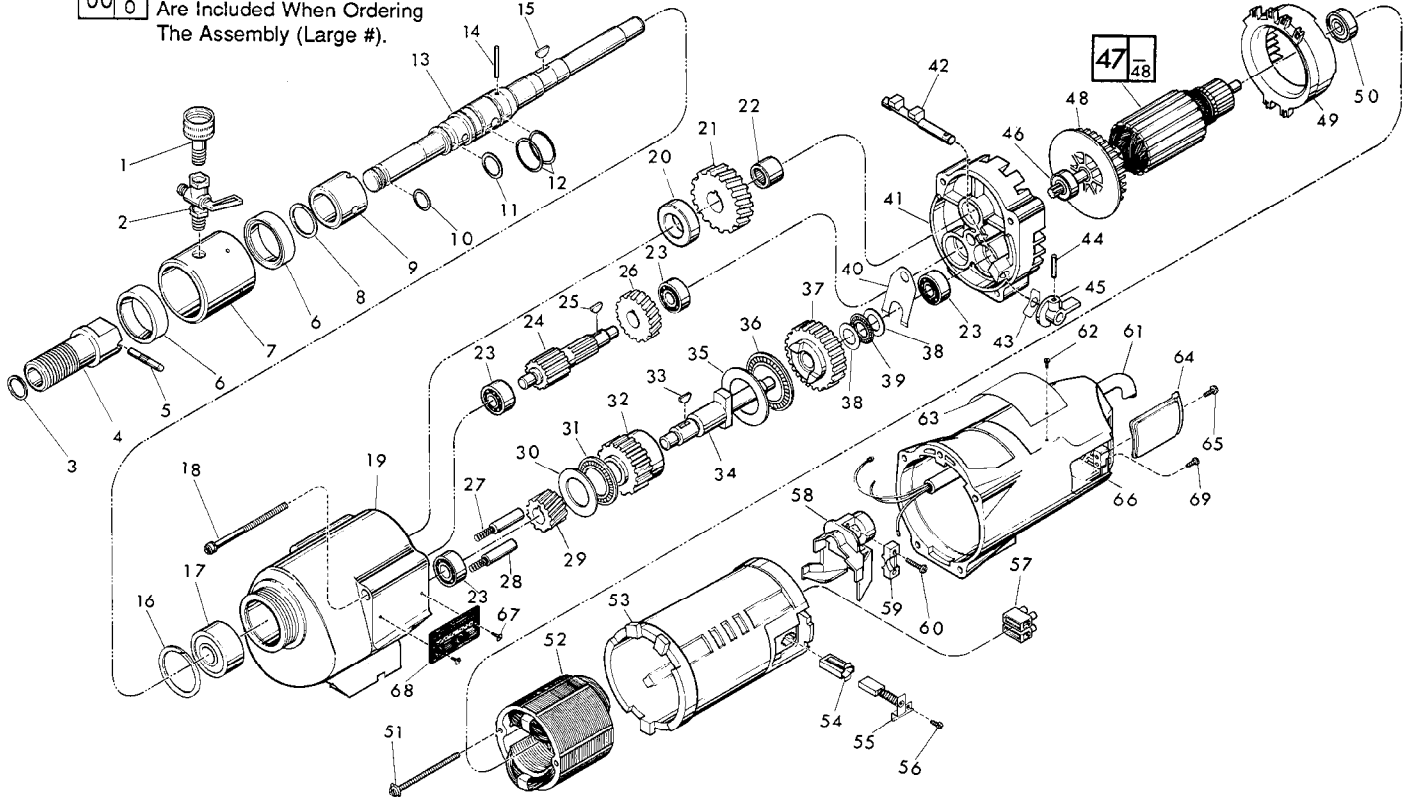


FIG.	PART NO.	DESCRIPTION OF PART	NO. REQ.
1	42-04-0600	Water Hose Adapter	(1)
2	45-80-0060	Shut Off Valve	(1)
3	34-60-1800	Retaining Ring	(1)
4	45-22-0050	Spindle Sleeve	(1)
5	44-60-0031	Shear Pin	(1)
6	45-06-0050	Trostel Seal	(2)
7	43-76-0051	Water Swivel Housing (With 06-83-2430 Scr.)	(1)
8	34-60-2115	Retaining Ring	(1)
9	42-40-0830	Spindle Bushing	(1)
10	34-40-1100	O-Ring	(1)
11	34-40-1200	O-Ring	(1)
12	34-40-1350	O-Ring	(2)
13	38-50-4555	Spindle	(1)
14	06-65-1530	1/8 X 1/2" Roll Pin	(1)
15	06-42-2400	Woodruff Key	(1)
16	34-80-3800	Retaining Ring	(1)
17	02-20-2515	Ball Bearing	(1)
18	06-82-9202	1/4 - 20x4-1/4" Taptite Torx Screw	(4)
19	28-14-1870	Gear Case Assy.(Inc. 06-65-1535 Pin)	(1)
20	45-36-1245	Spindle Spacer	(1)
21	32-75-2521	Spindle Gear	(1)
22	02-50-4830	Needle Bearing	(1)
23	02-04-1205	Ball Bearing	(4)
24	36-66-3751	Pinion Shaft Assy.	(1)
25	06-42-1600	Woodruff Key	(1)
26	32-40-1581	Intermediate Gear	(1)
27	40-50-6300	Shifting Spring	(2)
28	44-70-0100	Shifting Plunger	(2)
29	32-60-1041	Pinion Gear	(1)
30	45-88-0520	Thrust Bearing Washer	(1)
31	02-80-1800	Thrust Bearing	(1)
32	32-10-0061	Clutch Gear Assembly	(1)
33	06-42-2000	Woodruff Key	(1)
34	36-14-0061	Clutch Shaft	(1)
35	45-98-0530	Thrust Bearing Washer	(1)
36	02-80-5000	Thrust Bearing	(1)
37	32-10-0051	Clutch Gear Assembly	(1)
38	45-88-0510	Thrust Bearing Washer	(2)
39	02-80-1200	Thrust Bearing	(1)
40	45-98-0090	Shifting Yoke	(1)

FIG.	PART NO.	DESCRIPTION OF PART	NO. REQ.
41	14-13-0220	Diaphragm Assy.(Inc. 06-65-1155 Pin)	(1)
42	30-15-0272	Shift Cam	(1)
43	45-06-0350	Gear Case Seal	(1)
44	06-65-0840	1/8 x 3/4" Groove Pin	(1)
45	28-60-0056	Shifting Knob	(1)
46	02-04-1229	Ball Bearing	(1)
47	16-70-0320	120 V Armature	(1)
48	22-84-0790	Fan	(1)
49	42-14-0291	Baffle	(1)
50	02-04-1041	Ball Bearing	(1)
51	06-82-9152	10-24x2-3/4" Torx Sem. Screw	(2)
52	18-70-0290	120 V. Field	(1)
53	23-16-1410	Motor Insulator	(1)
54	22-20-0680	Brush Tube	(2)
55	22-18-0702	Carbon Brush Assembly	(2)
56	06-82-8835	8-32x5/16" Pan Torx Sem. Screw	(2)
57	22-56-0470	Terminal Block	(1)
58	22-38-0140	Wire Trap	(1)
59	31-17-0200	Cord Clamp	(1)
60	06-82-7326	8-16x1" Pan Hd. Plastite Torx Screw	(2)
61	22-64-4460	Cord Set (Inc. 23-35-0120 Plug)	(1)
62	06-85-0200	Nameplate Screw	(2)
63	12-15-7020	Nameplate	(1)
64	22-32-0350	Brush Cover	(2)
65	06-82-7252	8-32 x 3/8" Pan Slot Taptite Screw	(2)
66	28-50-6360	Motor Housing	(1)
67	06-82-5266	4-40x1/4" Pan Hd. Taptite Screw	(2)
68	12-98-2100	Instruction Plate	(1)
69	06-95-5200	8-32 x 5/16" Slot Hex Hd. Screw	(1)
	49-96-4700	1-3/8" Open End Wrench	(1)
	45-88-0800	Water Hose Washer(For Fig. No. 1)	(1)

FOR MOUNTING DRILL MOTOR USE:

06-75-3090	1/4-20 x 7/8" Socket Hd. Screw	(4)
06-97-4050	1/4" Split Ring Lock Washer	(4)

FIG. LUBRICATION

19 18 Oz. Type "E" Grease, No. 49-08-4121



SERVICE PARTS LIST

BULLETIN NO.
54-16-4041

SPECIFY CATALOG NO. AND SERIAL NO. WHEN ORDERING PARTS		REVISED BULLETIN	DATE
TWO SPEED DYMODRILL		54-16-4040	Aug. '93
		WIRING INSTRUCTION	
CATALOG NO. 4094	STARTING SERIAL NO. 740A	58-01-0930	

EXAMPLE:
Component Parts (Small #)
Are Included When Ordering
The Assembly (Large #).

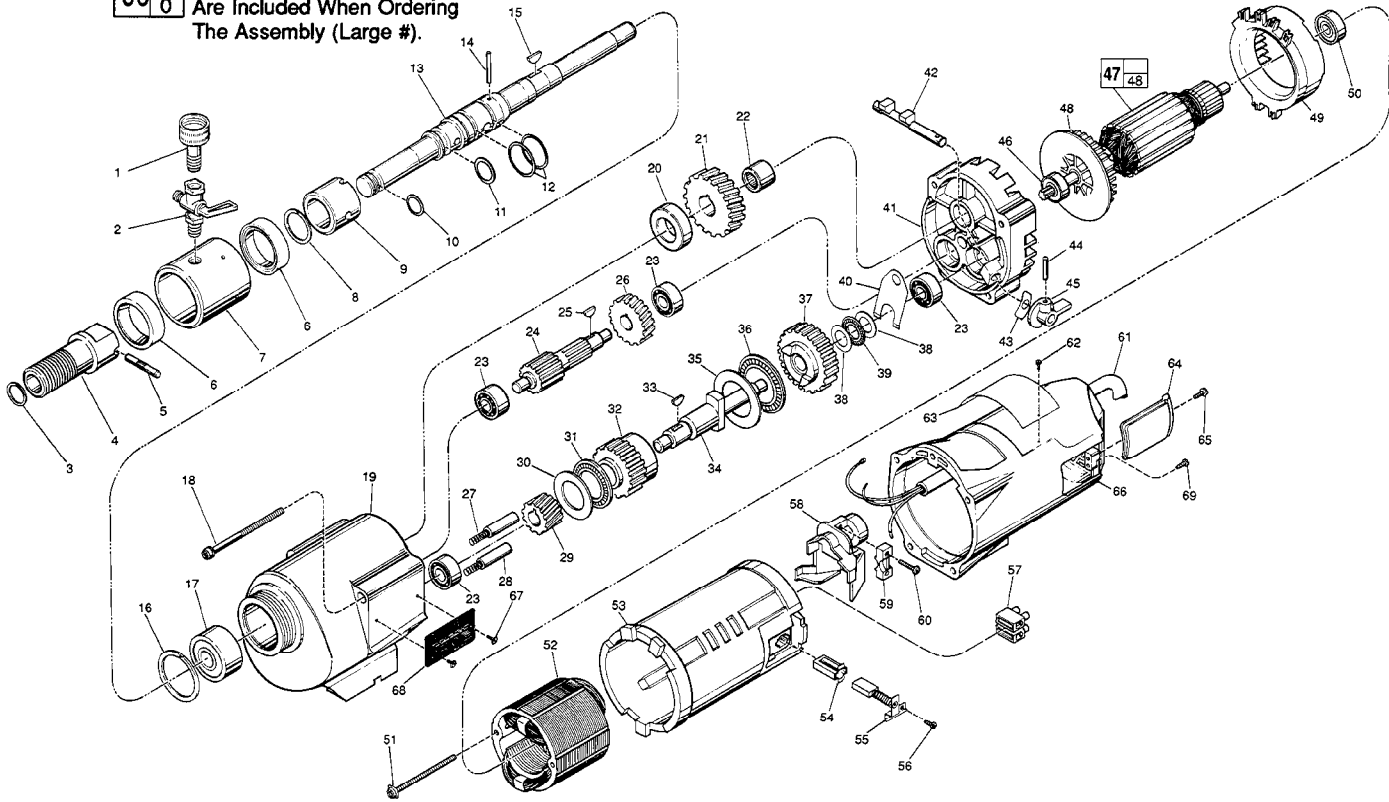


FIG.	PART NO.	DESCRIPTION OF PART	NO. REQ.	FIG.	PART NO.	DESCRIPTION OF PART	NO. REQ.
1	42-04-0600	Water Hose Adapter	(1)	★ 41	14-13-0210	Diaphragm Assy. (Inc. 06-65-1155 Pin)	(1)
2	45-80-0060	Shut Off Valve	(1)	★ 42	30-15-0272	Shift Cam	(1)
3	34-60-1800	Retaining Ring	(1)	43	45-06-0350	Gear Case Seal	(1)
4	45-22-0050	Spindle Sleeve	(1)	44	06-65-0840	1/8 x 3/4" Groove Pin	(1)
★ 5	44-60-0032	Shear Pin	(1)	★ 45	25-60-0056	Shifting Knob	(1)
6	45-06-0050	Trostel Seal	(2)	★ 46	02-04-1229	Ball Bearing	(1)
7	43-76-0051	Water Swivel Housing (With 06-83-2430 Scr.)	(1)	47	16-70-0320	120 V Armature	(1)
8	34-60-2115	Retaining Ring	(1)	48	22-84-0790	Fan	(1)
9	42-40-0830	Spindle Bushing	(1)	49	42-14-0291	Baffle	(1)
10	34-40-1100	O-Ring	(1)	50	02-04-1041	Ball Bearing	(1)
11	34-40-1200	O-Ring	(1)	51	06-82-9152	10-24 x 2-3/4" Pan Hd. Sem. T-25	(2)
12	34-40-1350	O-Ring	(2)	52	18-70-0290	120 V. Field	(1)
13	38-50-4555	Spindle	(1)	53	23-16-1410	Motor Insulator	(1)
14	06-65-1530	1/8 x 1/2" Roll Pin	(1)	54	22-20-0680	Brush Tube	(2)
15	06-42-2400	Woodruff Key	(1)	★ 55	22-18-0702	Carbon Brush Assembly	(2)
16	34-80-3800	Retaining Ring	(1)	56	06-82-8835	8-32 x 5/16" Pan Hd. Sem. T-20	(2)
17	02-20-2515	Ball Bearing	(1)	57	22-56-0470	Terminal Block	(1)
18	06-82-9202	1/4-20 x 4-1/4" Taptite T-30	(4)	58	22-38-0140	Wire Trap	(1)
19	28-14-1870	Gear Case Assy. (Inc. 06-65-1535 Pin)	(1)	59	31-17-0200	Cord Clamp	(1)
20	45-36-1245	Spindle Spacer	(1)	★ 60	06-82-7326	8-16 x 1" Pan Hd. Plastite T-20	(2)
21	32-75-2521	Spindle Gear	(1)	61	22-64-4460	Cord Set (Inc. 23-36-0120 Plug)	(1)
22	02-50-4830	Needle Bearing	(1)	★ 62	06-72-1720	Service Rivet	(2)
23	02-04-1205	Ball Bearing	(4)	★ 63	12-99-1875	Service Nameplate	(1)
24	36-66-3751	Pinion Shaft Assy.	(1)	64	22-32-0350	Brush Cover	(2)
25	06-42-1600	Woodruff Key	(1)	★ 65	06-82-5316	8-32 x 1/2" Pan Hd. Slit. Taptite T-20	(2)
26	32-40-1581	Intermediate Gear	(1)	66	28-50-6360	Motor Housing	(1)
27	40-50-6300	Shifting Spring	(2)	67	06-82-5266	4-40 x 1/4" Pan Hd. Taptite T-10	(2)
28	44-70-0100	Shifting Plunger	(2)	68	12-98-2100	Instruction Plate	(1)
29	32-60-1041	Pinion Gear	(1)	69	06-95-5200	8-32 x 5/16" Slotted Hex Hd. Screw	(1)
30	45-88-0520	Thrust Bearing Washer	(1)		49-96-4700	1-3/8" Open End Wrench	(1)
31	02-80-1800	Thrust Bearing	(1)		45-88-0800	Water Hose Washer (For Fig. No. 1)	(1)
32	32-10-0061	Clutch Gear Assembly	(1)				
33	06-42-2000	Woodruff Key	(1)				
34	36-14-0061	Clutch Shaft	(1)				
35	45-88-0530	Thrust Bearing Washer	(1)				
36	02-80-5000	Thrust Bearing	(1)				
37	32-10-0051	Clutch Gear Assembly	(1)				
38	45-88-0510	Thrust Bearing Washer	(2)				
39	02-80-1200	Thrust Bearing	(1)				
40	45-98-0090	Shifting Yoke	(1)				

FOR MOUNTING DRILL MOTOR USE:
06-75-3090 1/4-20 x 7/8" Socket Hd. Screw (4)
06-97-4050 1/4" Split Ring Lock Washer (4)

FIG. LUBRICATION
★ 19 20 Oz. Type "J" Grease, No. 49-08-4220.



SERVICE PARTS LIST

BULLETIN NO.
54-16-4042

SPECIFY CATALOG NO. AND SERIAL NO. WHEN ORDERING PARTS		REVISED BULLETIN	DATE
TWO SPEED DYMODRILL		54-16-4041	Mar. 2008
CATALOG NO.	4094	WIRING INSTRUCTION	
STARTING SERIAL NO.	740B	58-01-0930	

EXAMPLE:
Component Parts (Small #)
Are Included When Ordering
The Assembly (Large #).

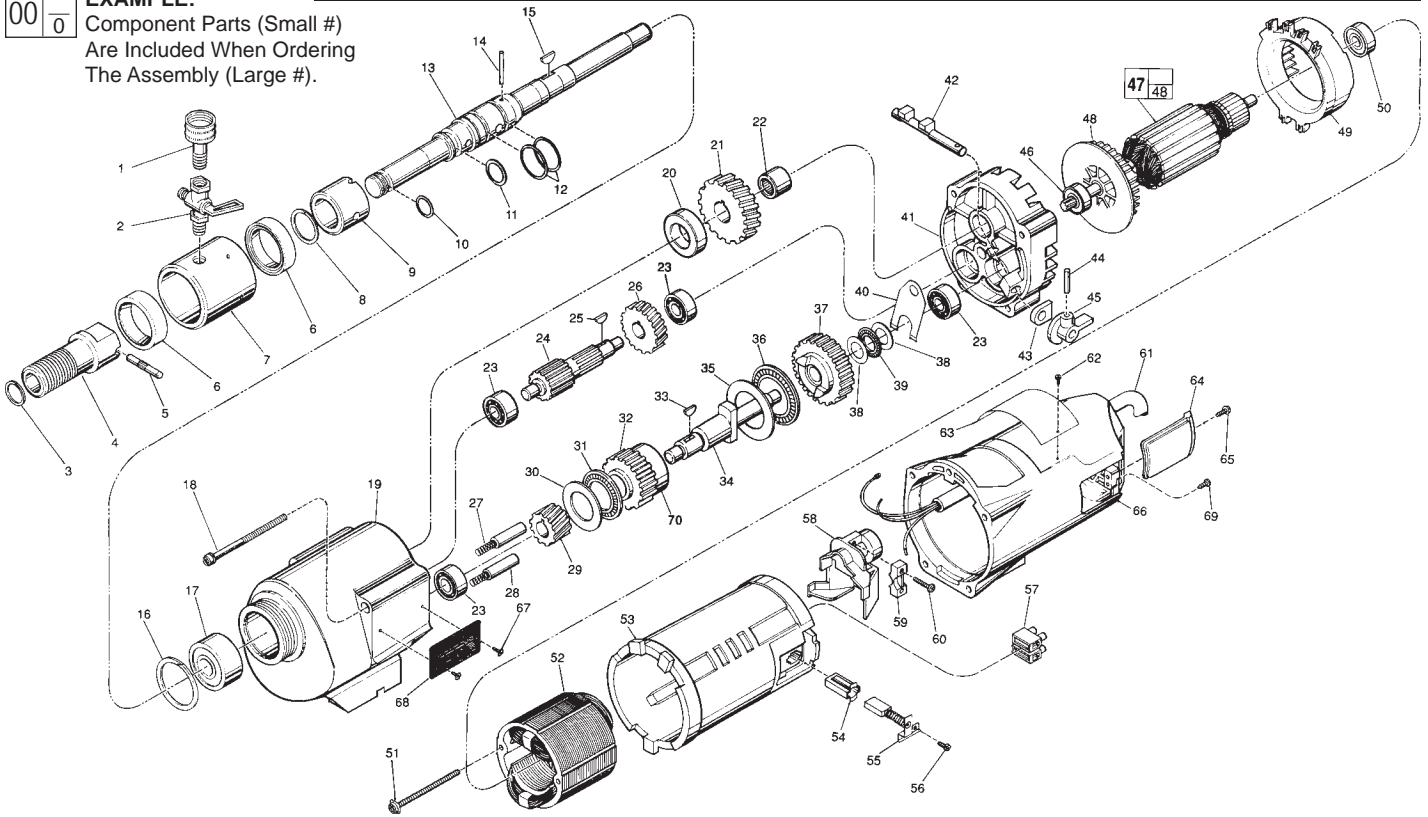


FIG.	PART NO.	DESCRIPTION OF PART	NO. REQ.	FIG.	PART NO.	DESCRIPTION OF PART	NO. REQ.
1	42-04-0600	Water Hose Adapter	(1)	44	06-65-0840	1/8 x 3/4" Groove Pin	(1)
2	45-80-0060	Shut Off Valve	(1)	45	25-60-0056	Shifting Knob	(1)
3	34-60-1800	Retaining Ring	(1)	46	02-04-1229	Ball Bearing	(1)
4	45-22-0050	Spindle Sleeve	(1)	47	16-70-0320	120 V Armature	(1)
5	44-60-0032	Shear Pin	(1)	48	22-84-0790	Fan	(1)
6	45-06-0050	Trostel Seal	(2)	49	42-14-0291	Baffle	(1)
7	43-76-0051	Water Swivel Hsg Incl 06-83-2430 Scr	(1)	50	02-04-1041	Ball Bearing	(1)
8	34-60-2115	Retaining Ring	(1)	51	06-82-9152	10-24 x 2-3/4" Pan Hd. Sem. T-25	(2)
9	42-40-0830	Spindle Bushing	(1)	52	18-70-0290	120 V. Field	(1)
10	34-40-1100	O-Ring	(1)	53	23-16-1410	Motor Insulator	(1)
11	34-40-1200	O-Ring	(1)	54	22-20-0680	Brush Tube	(2)
12	34-40-1350	O-Ring	(2)	55	22-18-0702	Carbon Brush Assembly	(2)
13	38-50-4555	Spindle	(1)	56	06-82-8835	8-32 x 5/16" Pan Hd. Sem.T-20	(2)
14	06-65-1530	1/8 x 1/2" Roll Pin	(1)	57	22-56-0470	Terminal Block	(1)
15	06-42-2400	Woodruff Key	(1)	58	22-38-0140	Wire Trap	(1)
16	34-80-3800	Retaining Ring	(1)	59	31-17-0200	Cord Clamp	(1)
17	02-20-2515	Ball Bearing	(1)	60	06-82-7326	8-16 x 1" Pan Hd. Plastite T-20	(2)
18	06-82-9202	1/4-20 x 4-1/4" Taptite T-30	(4)	★ 61	22-64-0300	Cord Set	(1)
19	28-14-1870	Gear Case Assy. Incl 06-65-1535 Pin	(1)	62	06-72-1720	Service Rivet	(2)
20	45-36-1245	Spindle Spacer	(1)	63	12-99-1875	Service Nameplate	(1)
21	32-75-2521	Spindle Gear	(1)	64	22-32-0350	Brush Cover	(2)
22	02-50-4830	Needle Bearing	(1)	65	06-82-5316	8-32 x 1/2" Pan Hd. Slit. Taptite T-20	(2)
23	02-04-1205	Ball Bearing	(4)	66	28-50-6360	Motor Housing	(1)
24	36-66-3751	Pinion Shaft Assy.	(1)	67	06-82-5266	4-40 x 1/4" Pan Hd. Taptite T-10	(2)
25	06-42-1600	Woodruff Key	(1)	68	12-98-2100	Instruction Plate	(1)
26	32-40-1581	Intermediate Gear	(1)	69	06-95-5200	8-32 x 5/16" Slotted Hex Hd. Screw	(1)
27	40-50-6300	Shifting Spring	(2)	★ 70	45-36-0225	Gear Spacer	(1)
28	44-70-0100	Shifting Plunger	(2)		49-96-4700	1-3/8" Open End Wrench	(1)
29	32-60-1041	Pinion Gear	(1)		45-88-0800	Water Hose Washer (For Fig. No. 1)	(1)
30	45-88-0520	Thrust Bearing Washer	(1)		61-30-0060	Water Seal Jig	(1)
31	02-80-1800	Thrust Bearing	(1)				
★ 32	32-10-0060	Clutch Gear Assembly	(1)				
33	06-42-2000	Woodruff Key	(1)				
34	36-14-0061	Clutch Shaft	(1)				
35	45-88-0530	Thrust Bearing Washer	(1)				
36	02-80-5000	Thrust Bearing	(1)				
37	32-10-0051	Clutch Gear Assembly	(1)				
38	45-88-0510	Thrust Bearing Washer	(2)				
39	02-80-1200	Thrust Bearing	(1)				
40	45-98-0090	Shifting Yoke	(1)				
41	14-13-0210	Diaphragm Assy.(Incl. 06-65-1155 Pin)	(1)				
42	30-15-0272	Shift Cam	(1)				
43	43-44-0580	Foam Gasket	(2)				

FOR MOUNTING DRILL MOTOR USE:
06-75-3090 1/4-20 x 7/8" Socket Hd. Screw (4)
06-97-4050 1/4" Split Ring Lock Washer (4)

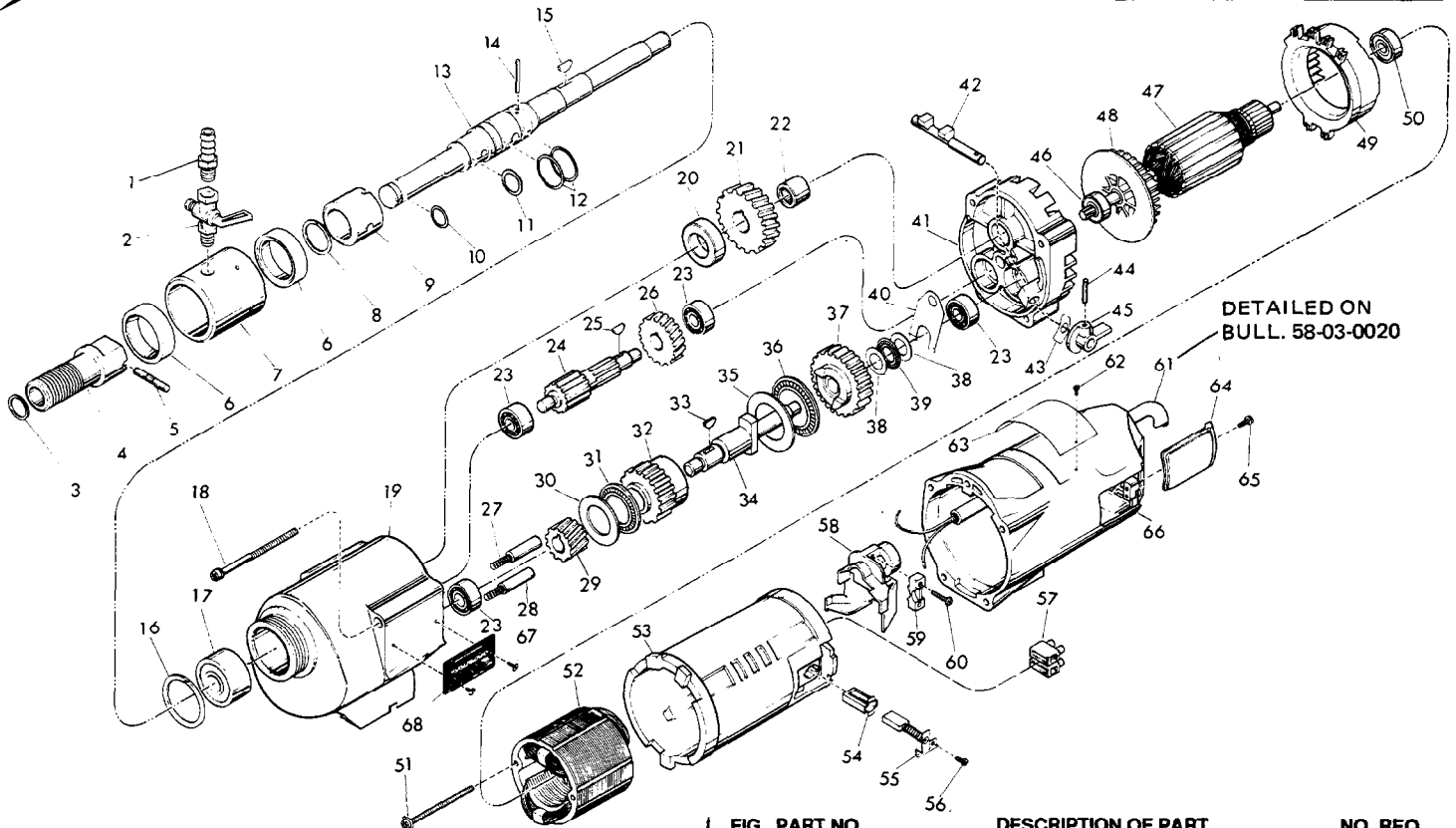
FIG. LUBRICATION
19 20 Oz. Type "J" Grease, No. 49-08-4220.



SERVICE PARTS LIST

BULLETIN NO.
55-16-0200

SPECIFY CATALOG NO. AND SERIAL NO. WHEN ORDERING PARTS		REVISED BULLETIN	DATE
TWO SPEED DYMODRILL			March'88
CATALOG NO. 4094-5	STARTING SERIAL NO. 744-1001	WIRING INSTRUCTION 58-03-0020	



DETAILED ON
BULL. 58-03-0020

FIG. PART NO.	DESCRIPTION OF PART	NO. REQ.
1	42-90-0200 Water Hose Fitting	(1)
2	45-80-0060 Shut Off Valve	(1)
3	34-60-1800 Retaining Ring	(1)
4	45-22-0050 Spindle Sleeve	(1)
5	44-60-0030 Shear Pin	(1)
6	45-06-0050 Trostel Seal	(2)
7	43-76-0051 Water Swivel Housing	(1)
8	34-60-2115 Retaining Ring	(1)
9	42-40-0830 Spindle Bushing	(1)
10	34-40-1100 O-Ring	(1)
11	34-40-1200 O-Ring	(1)
12	34-40-1350 O-Ring	(2)
13	38-50-4555 Spindle	(1)
14	06-65-1530 1/8 x 1/2" Roll Pin	(1)
15	06-42-2400 Woodruff Key	(1)
16	34-80-3800 Retaining Ring	(1)
17	02-20-2515 Ball Bearing	(1)
18	06-82-9202 1/4 - 20 x 4-1/4" Taptite Torx Screw	(4)
19	28-14-1870 Gear Case Assembly (Incl. 06-65-1535 Pin)	(1)
20	45-36-1245 Spindle Spacer	(1)
21	32-75-2521 Spindle Gear	(1)
22	02-50-4830 Needle Bearing	(1)
23	02-04-1205 Ball Bearing	(4)
24	36-66-3751 Pinion Shaft Assy.	(1)
25	06-42-1600 Woodruff Key	(1)
26	32-40-1581 Intermediate Gear	(1)
27	40-50-6300 Shifting Spring	(2)
28	44-70-0100 Shifting Plunger	(2)
29	32-60-1041 Pinion Gear	(1)
30	45-88-0520 Thrust Bearing Washer	(1)
31	02-80-1800 Thrust Bearing	(1)
32	32-10-0061 Clutch Gear Assembly	(1)
33	06-42-2000 Woodruff Key	(1)
34	36-14-0061 Clutch Shaft	(1)
35	45-88-0530 Thrust Bearing Washer	(1)
36	02-80-5000 Thrust Bearing	(1)
37	32-10-0051 Clutch Gear Assembly	(1)
38	45-88-0510 Thrust Bearing Washer	(2)
39	02-80-1200 Thrust Bearing	(1)
40	45-98-0090 Shifting Yoke	(1)
41	14-13-0220 Diaphragm Assy. (Incl. 06-65-1155 Pin)	(1)

FIG. PART NO.	DESCRIPTION OF PART	NO. REQ.
42	30-15-0272 Shift. Cam	(1)
43	45-06-0350 Gear Case Seal	(1)
44	06-65-0840 1/8 x 3/4" Groove Pin	(1)
45	28-60-0056 Shifting Knob	(1)
46	02-04-1230 Ball Bearing	(1)
47	16-76-0320 220V Armature (Incl. Fig. No. 48)	(1)
48	22-84-0790 Fan	(1)
49	42-14-0291 Baffle	(1)
50	02-04-1041 Ball Bearing	(1)
51	06-82-9152 10-24 x 2-3/4" Torx Sem. Screw (See Note)	(2)
52	18-74-0120 220V Field	(1)
53	23-16-1410 Motor Insulator	(1)
54	22-20-0680 Brush Tube	(2)
55	22-18-0705 Carbon Brush Assembly	(2)
56	06-82-8835 8-32 x 5/16" Pan Torx Sem Screw	(2)
57	22-56-0470 Terminal Block	(1)
58	22-38-0140 Wire Trap	(1)
59	31-17-0200 Cord Clamp	(1)
60	06-82-7326 8-16 x 1" Pan Hd. Plastite Torx Screw	(2)
61	23-37-0100 Control Assy. - Refer To Bull. 58-03-0020	(1)
62	06-95-2100 Nameplate - Screw	(2)
63	12-15-4160 Nameplate - Service	(1)
64	22-32-0350 Brush Cover	(2)
65	06-82-7252 8-32 x 3/8" Pan Slot Taptite Screw	(2)
66	28-50-6360 Motor Housing	(1)
67	06-82-5266 4-40 x 1/4" Pan Hd. Taptite Screw	(2)
68	12-98-3060 Instruction Plate	(1)

NOTE: Fig. 51 Apply Type 242 Blue Loctite and Torque To 125 - 150 Lb. In.

06-83-2430	10-32 x 1/4" Set Screw (Not Shown) For Fig. No. 7	(1)
49-96-4090	1-3/8" Open End Wrench (Not Shown)	(1)
49-96-0085	3/16" Hex Wrench (Not Shown)	(1)
49-96-0050	3/32" Hex Wrench (Not Shown)	(1)
45-56-0210	26" Strap & Buckle (Not Shown)	(1)

FOR MOUNTING DRILL MOTOR		
06-75-3090	1/4-20 x 7/8" Socket Hd. Screw	(4)
06-97-4050	1/4" Split Ring Lock Washer	(4)



SERVICE PARTS LIST

BULLETIN NO.
55-16-0201

SPECIFY CATALOG NO. AND SERIAL NO. WHEN ORDERING PARTS		REVISED BULLETIN 55-16-0200	DATE Oct. '89
TWO SPEED DYMODRILL		WIRING INSTRUCTION	
CATALOG NO. 4094-5	STARTING SERIAL NO. 744-4001	58-03-0020	

EXAMPLE:

Component Parts (Small #)
Are Included When Ordering
The Assembly (Large #).

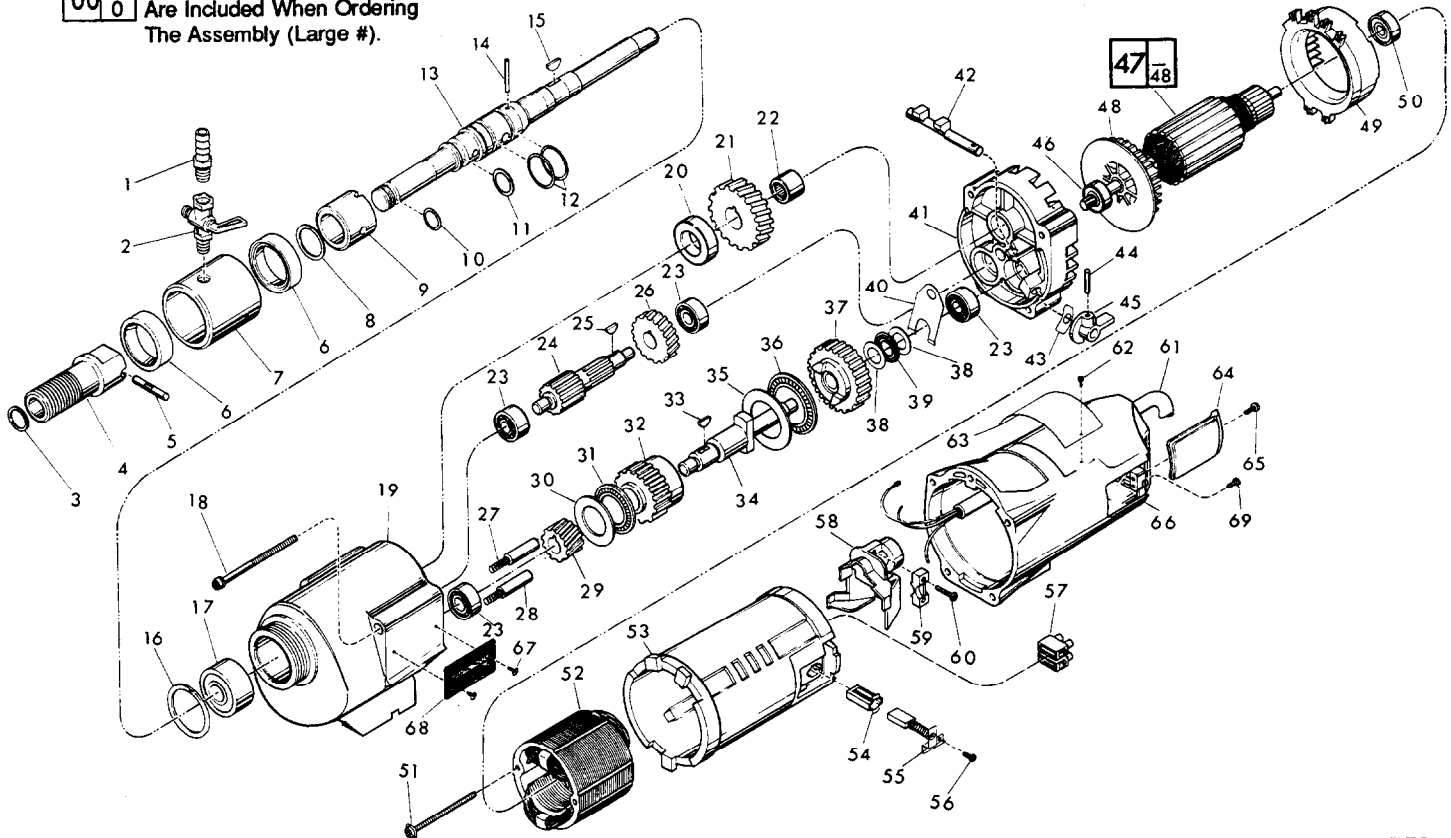


FIG.	PART NO.	DESCRIPTION OF PART	NO. REQ.
	1	42-90-0200 Water Hose Fitting	(1)
	2	45-80-0060 Shut Off Valve	(1)
	3	34-60-1800 Retaining Ring	(1)
	4	45-22-0050 Spindle Sleeve	(1)
★	5	44-60-0031 Shear Pin	(1)
	6	45-06-0050 Trostel Seal	(2)
	7	43-76-0051 Water Swivel Housing (With 06-83-2430 Scr.)	(1)
	8	34-60-2115 Retaining Ring	(1)
	9	42-40-0830 Spindle Bushing	(1)
	10	34-40-1100 O-Ring	(1)
	11	34-40-1200 O-Ring	(1)
	12	34-40-1350 O-Ring	(2)
	13	38-50-4555 Spindle	(1)
	14	06-65-1530 1/8 X 1/2" Roll Pin	(1)
	15	06-42-2400 Woodruff Key	(1)
	16	34-80-3800 Retaining Ring	(1)
	17	02-20-2515 Ball Bearing	(1)
	18	06-82-9202 1/4 - 20x4-1/4" Tapite Torx Screw	(4)
	19	28-14-1870 Gear Case Assy.(Inc. 06-65-1535 Pin)	(1)
	20	45-36-1245 Spindle Spacer	(1)
	21	32-75-2521 Spindle Gear	(1)
	22	02-50-4830 Needle Bearing	(1)
	23	02-04-1205 Ball Bearing	(4)
	24	36-66-3751 Pinion Shaft Assy.	(1)
	25	06-42-1600 Woodruff Key	(1)
	26	32-40-1581 Intermediate Gear	(1)
	27	40-50-6300 Shifting Spring	(2)
	28	44-70-0100 Shifting Plunger	(2)
	29	32-60-1041 Pinion Gear	(1)
	30	45-88-0520 Thrust Bearing Washer	(1)
	31	02-80-1800 Thrust Bearing	(1)
	32	32-10-0061 Clutch Gear Assembly	(1)
	33	06-42-2000 Woodruff Key	(1)
	34	36-14-0061 Clutch Shaft	(1)
	35	45-88-0530 Thrust Bearing Washer	(1)
	36	02-80-5000 Thrust Bearing	(1)
	37	32-10-0051 Clutch Gear Assembly	(2)
	38	45-88-0510 Thrust Bearing Washer	(1)
	39	02-80-1200 Thrust Bearing	(1)
	40	45-96-0090 Shifting Yoke	(1)

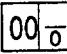
FIG.	PART NO.	DESCRIPTION OF PART	NO. REQ.
	41	14-13-0220 Diaphragm Assy.(Inc. 06-65-1155 Pin)	(1)
★	42	30-15-0272 Shift Cam	(1)
	43	45-06-0350 Gear Case Seal	(1)
	44	06-65-0840 1/8 x 3/4" Groove Pin	(1)
	45	28-60-0056 Shifting Knob	(1)
★	46	02-04-1229 Ball Bearing	(1)
	47	16-76-0320 220 V Armature	(1)
	48	22-84-0790 Fan	(1)
	49	42-14-0291 Baffle	(1)
	50	02-04-1041 Ball Bearing	(1)
	51	06-82-9152 10-24x2-3/4" Torx Sem. Screw	(2)
	52	18-74-0120 220 V Field	(1)
	53	23-16-1410 Motor Insulator	(1)
	54	22-20-0680 Brush Tube	(2)
	55	22-18-0705 Carbon Brush Assembly	(2)
	56	06-82-8835 8-32x5/16" Pan Torx Sem. Screw	(2)
	57	22-56-0470 Terminal Block	(1)
	58	22-38-0140 Wire Trap	(1)
	59	31-17-0200 Cord Clamp	(1)
	60	06-82-7326 8-16x1" Pan Hd. Plastite Torx Screw	(2)
★	61	23-37-0150 Control Assy.-Refer to Bull. 58-03-0020	(1)
	62	06-85-0200 Nameplate Screw	(2)
★	63	12-15-4160 Nameplate	(1)
	64	22-32-0350 Brush Cover	(2)
	65	06-82-7252 8-32 x 3/8" Pan Slot Tapite Screw	(2)
	66	28-50-6360 Motor Housing	(1)
	67	06-82-5266 4-40x1/4" Pan Hd. Tapite Screw	(2)
	68	12-98-3060 Instruction Plate	(1)
★	69	06-95-5200 8-32 x 5/16" Slot Hex Hd. Screw	(1)
		49-96-4700 1-3/8" Open End Wrench	(1)
		49-96-0085 3/16" Socket Wrench	(1)
		49-96-0050 3/32" Socket Wrench	(1)
		45-56-0210 26" Strap and Buckle	(1)
FOR MOUNTING DRILL MOTOR USE:			
		06-75-3090 1/4-20 x 7/8" Socket Hd. Screw	(4)
		06-97-4050 1/4" Split Ring Lock Washer	(4)
FIG.	LUBRICATION		
19	18 Oz. Type "E" Grease, No. 49-08-4121		



SERVICE PARTS LIST

BULLETIN NO.
55-16-0202

SPECIFY CATALOG NO. AND SERIAL NO. WHEN ORDERING PARTS		REVISED BULLETIN	DATE
TWO SPEED DYMODRILL		55-16-0201	Mar.'94
CATALOG NO.	4094-5	WIRING INSTRUCTION	
STARTING SERIAL NO.	744A	58-03-0020	

EXAMPLE:
 Component Parts (Small #)
 Are Included When Ordering
 The Assembly (Large #).

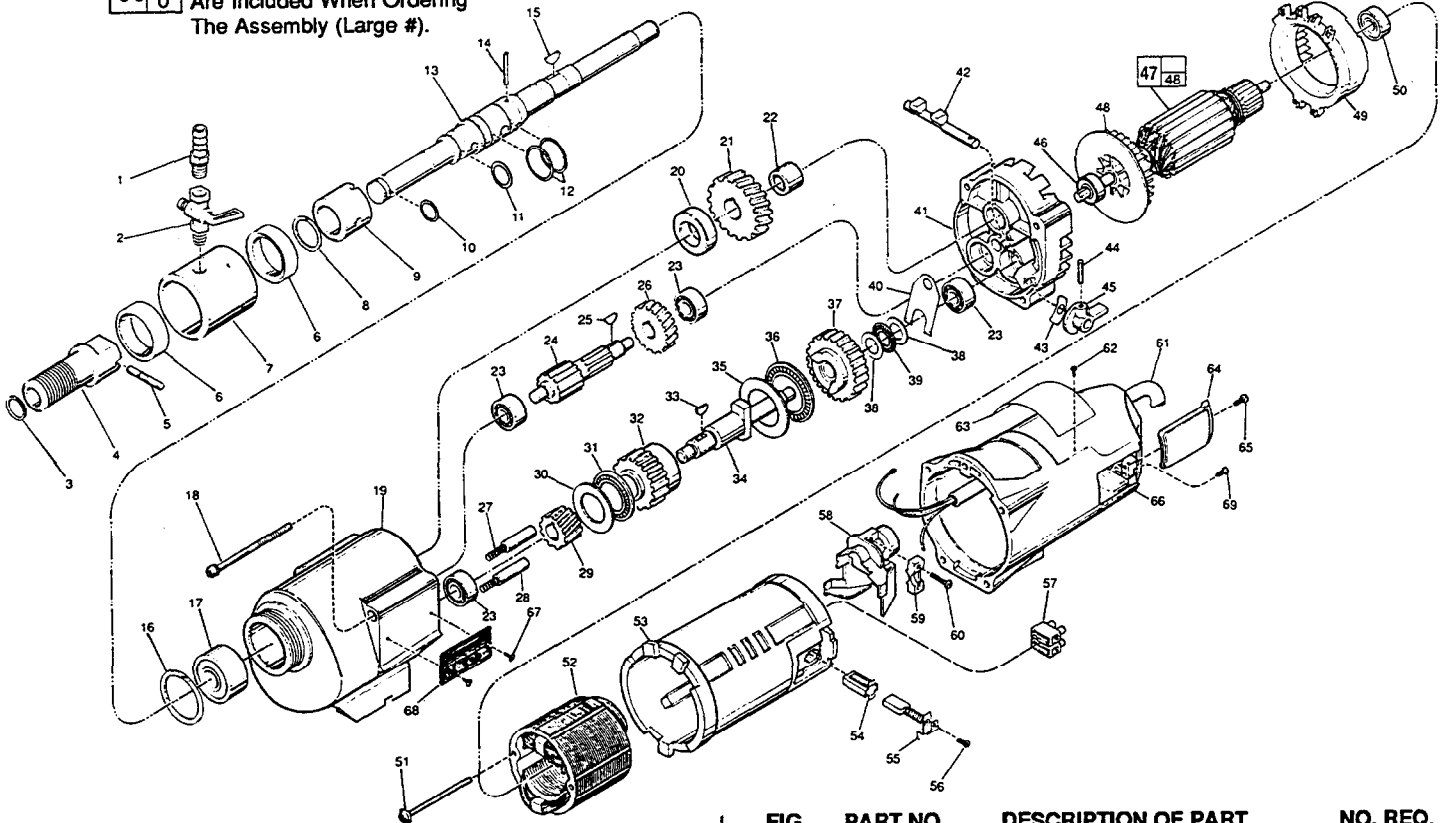


FIG.	PART NO.	DESCRIPTION OF PART	NO. REQ.
1	42-90-0200	Water Hose Fitting	(1)
2	45-80-0060	Shut Off Valve	(1)
3	34-60-1800	Retaining Ring	(1)
4	45-22-0050	Spindle Sleeve	(1)
★ 5	44-60-0065	Shear Pin	(1)
6	45-06-0050	Trostel Seal	(2)
7	43-76-0051	Water Swivel Housing (With 06-83-2430 Scr.)	(1)
8	34-60-2115	Retaining Ring	(1)
9	42-40-0830	Spindle Bushing	(1)
10	34-40-1100	O-Ring	(1)
11	34-40-1200	O-Ring	(1)
12	34-40-1350	O-Ring	(1)
13	38-50-4555	Spindle	(1)
14	06-65-1530	1/8 x 1/2" Roll Pin	(1)
15	06-42-2400	Woodruff Key	(1)
16	34-80-3800	Retaining Ring	(1)
17	02-20-2515	Ball Bearing	(1)
18	06-82-9202	1/4-20 x 4-1/4" Taptite T-30 Screw	(1)
19	28-14-1870	Gear Case Assy.(Inc. 06-65-1535 Pin)	(1)
20	45-36-1245	Spindle Spacer	(1)
21	32-75-2521	Spindle Gear	(1)
22	02-50-4830	Needle Bearing	(1)
23	02-04-1205	Ball Bearing	(1)
24	36-66-3751	Pinion Shaft Assy.	(1)
25	06-42-1600	Woodruff Key	(1)
26	32-40-1581	Intermediate Gear	(1)
27	40-50-6300	Shifting Spring	(2)
28	44-70-0100	Shifting Plunger	(2)
29	32-60-1041	Pinion Gear	(1)
30	45-88-0520	Thrust Bearing Washer	(1)
31	02-80-1800	Thrust Bearing	(1)
32	32-10-0061	Clutch Gear Assembly	(1)
33	06-42-2000	Woodruff Key	(1)
34	36-14-0061	Clutch Shaft	(1)
35	45-88-0530	Thrust Bearing Washer	(1)
36	02-80-5000	Thrust Bearing	(1)
37	32-10-0051	Clutch Gear Assembly	(1)
38	45-88-0510	Thrust Bearing Washer	(1)
39	02-80-1200	Thrust Bearing	(1)
40	45-98-0090	Shifting Yoke	(1)

FIG.	PART NO.	DESCRIPTION OF PART	NO. REQ.
★ 41	14-13-0210	Diaphragm Assy.(Inc. 06-65-1155 Pin)	(1)
42	30-15-0272	Shift Cam	(1)
43	45-06-0350	Gear Case Seal	(1)
44	06-65-0840	1/8 x 3/4" Groove Pin	(1)
★ 45	25-60-0056	Shifting Knob	(1)
46	02-04-1229	Ball Bearing	(1)
★ 47	16-76-0325	220 V Armature	(1)
48	22-84-0790	Fan	(1)
49	42-14-0291	Baffle	(1)
50	02-04-1041	Ball Bearing	(1)
51	06-82-9152	10-24 x 2-3/4" Pan Hd. Sem. T-25	(2)
52	18-74-0120	220 V Field	(1)
53	23-16-1410	Motor Insulator	(1)
54	22-20-0680	Brush Tube	(2)
★ 55	22-18-0706	Carbon Brush Assembly	(2)
56	06-82-8835	8-32 x 5/16" Pan Hd. Sem. T-20	(2)
57	22-56-0470	Terminal Block	(1)
58	22-38-0140	Wire Trap	(1)
59	31-17-0200	Cord Clamp	(1)
60	06-82-7326	8-16 x 1" Pan Hd. Plastite T-20	(2)
61	23-37-0150	Control Assy.-Refer to Bull. 58-03-0020	(1)
★ 62	06-72-1720	Service Rivet	(2)
★ 63	12-15-7545	Service Nameplate	(1)
64	22-32-0350	Brush Cover	(2)
★ 65	06-82-5316	8-32 x 1/2" Pan Hd. Slot Taptite T-20	(1)
66	28-50-6360	Motor Housing	(2)
67	06-82-5266	4-40 x 1/4" Pan Hd. Taptite T-10 Scr.	(2)
68	12-98-3060	Instruction Plate	(1)
69	06-95-5200	8-32 x 5/16" Slot Hex Hd. Screw	(1)
	49-96-4700	1-3/8" Open End Wrench	(1)
	49-96-0085	3/16" Socket Wrench	(1)
	49-96-0050	3/32" Socket Wrench	(1)
	45-56-0210	26" Strap and Buckle	(1)

FOR MOUNTING DRILL MOTOR USE:
 06-75-3090 1/4-20 x 7/8" Socket Hd. Screw (4)
 06-97-4050 1/4" Split Ring Lock Washer (4)

FIG. LUBRICATION
 ★ 19 20 Oz. Type "J" Grease, No. 49-08-4220