

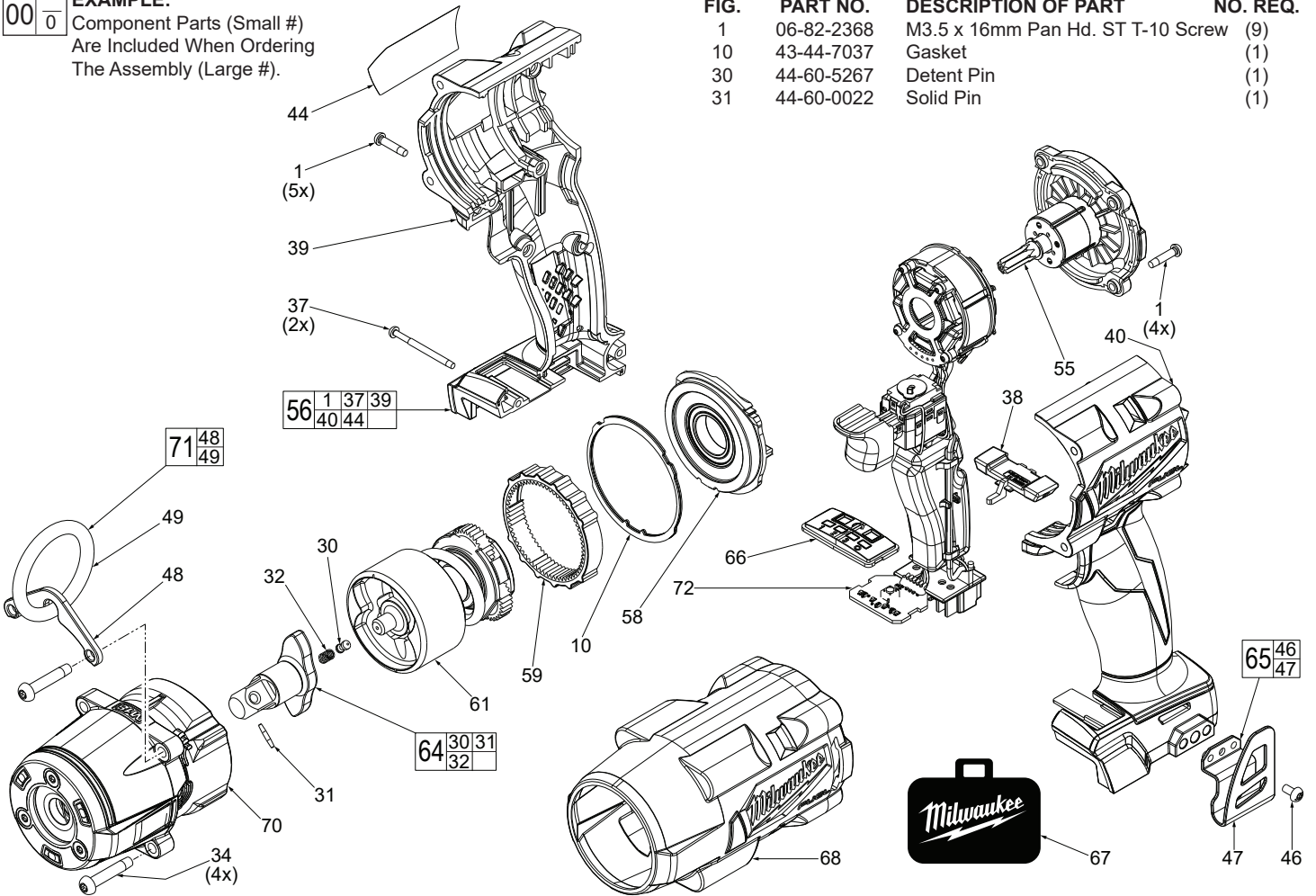


SERVICE PARTS LIST

BULLETIN NO.
54-26-4010

| SPECIFY CATALOG NO. AND SERIAL NO. WHEN ORDERING PARTS | | | REVISED BULLETIN | DATE |
|--------------------------------------------------------|----------|-----------------|--------------------|-----------|
| M18™ FUEL™ 1/2" Mid Torque Impact Wrench w/ Detent Pin | | | | Aug. 2020 |
| CATALOG NO. | 2962P-20 | STARTING SERIAL | WIRING INSTRUCTION | |
| | | L80A | SEE PAGE 2 | |

EXAMPLE:
00 0 Component Parts (Small #)
Are Included When Ordering
The Assembly (Large #).



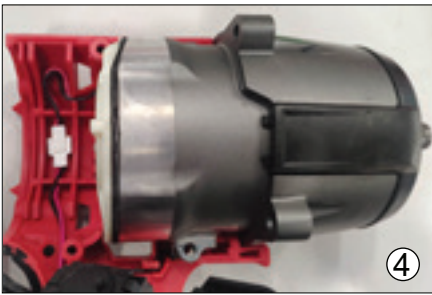
LUBRICATION NOTES:
Type 'J' Grease
No. 49-08-4220, 1 lb. can

NOTE: When servicing, remove 90-95% of the existing grease prior to installing Type 'J'. Original grease may be similar in color but not compatible with 'J'. Prior to reinstalling, clean gear assemblies with a clean, dry cloth. Lightly coat all parts highlighted here with 'J' grease. Apply a greater amount of grease to all internal and external gear teeth.

NOTE: Service Hammer Assembly (60) comes completely pre-lubricated. Do not attempt to disassemble.

Model 2960-20 shown

| FIG. | PART NO. | DESCRIPTION OF PART | NO. REQ. |
|------|------------|-----------------------------------|----------|
| 32 | 40-50-0925 | Detent Spring | (1) |
| 34 | 06-82-2366 | M5 x 26.5mm Pan Hd. ST T-25 Screw | (4) |
| 37 | 06-82-2367 | M3 x 38mm Pan Hd. ST T-10 Screw | (2) |
| 38 | 42-42-2735 | Forward/Reverse Shuttle | (1) |
| 39 | ----- | Right Housing Halve-Cover | (1) |
| 40 | ----- | Left Housing Halve-Support | (1) |
| 44 | 12-20-9100 | Service Nameplate | (1) |
| 46 | 06-82-2500 | 6-32 x 7mm Pan Hd T-15 Screw | (1) |
| 47 | ----- | Belt Hook | (1) |
| 48 | ----- | Tether Stamping | (1) |
| 49 | ----- | Tether Ring | (1) |
| 55 | 16-01-3040 | Rotor Assembly | (1) |
| 56 | 31-44-7007 | Housing Kit | (1) |
| 58 | 44-66-2675 | End Cap Assembly | (1) |
| 59 | 32-65-0385 | Ring Gear | (1) |
| 61 | 14-30-2962 | Hammer Assembly, 1/2" Anvil | (1) |
| 64 | 42-06-2860 | Anvil Assembly, 1/2" DP | (1) |
| 65 | 42-70-0950 | Belt Clip Kit | (1) |
| 66 | 45-24-2854 | Mode Selector Assembly | (1) |
| 67 | 42-55-6375 | Blow Molded Carrying Case | (1) |
| 68 | 49-16-2960 | Rubber Boot, Accessory | (1) |
| 70 | 28-50-2962 | Gearcase Assembly, 1/2" Anvil | (1) |
| 71 | 49-16-2962 | Tether Ring Kit, Accessory | (1) |
| 72 | 14-20-6548 | Electronics Assembly, 1/2" | (1) |



1. Install the HV (ground) terminal being sure the clip is inserted in housing cavity. Place ground wire in wire channel and route as shown.
2. Place gearcase assembly in housing half and secure with two gearcase screws.
3. Install the PCBA in housing half. Place mode selector assembly as shown.
4. Join the connector of shadowless LED assembly with connector on electronics assembly. Route wires in traps as shown.
5. Place into housing half the remaining components of the electronics assembly (stator, on-off switch and forward/reverse shuttle).
6. Install the housing cover onto the housing support. Secure housing halves with screws. Secure gearcase assembly to housing assembly with remaining two screws.

Not shown:
Install rotor assembly onto rear of housing assembly and secure with four screws.

As an aid to reassembly, take notice of wire routing and position in wire guides and traps while dismantling tool.

Be sure that all components of electronics kit are seated firmly and squarely in the handle recesses.

Avoid pinched wires, be sure that all wires and sleeves are pressed completely down in wire guides and traps.

Prior to securing the handle cover onto the handle support, be sure that there are no interferences.

Before installing the battery, check for proper functionality of shuttle and triggers.

Install battery and depress switch trigger to assure tool is operating properly.