



SERVICE PARTS LIST

BULLETIN NO.
54-26-2860

SPECIFY CATALOG NO. AND SERIAL NO. WHEN ORDERING PARTS		REVISED BULLETIN	DATE
M18™ FUEL™ ONE KEY™ 1" Square Impact Wrench			Mar. 2019
CATALOG NO.	2867-20	STARTING SERIAL NO.	K04A
			WIRING INSTRUCTION See Page 3

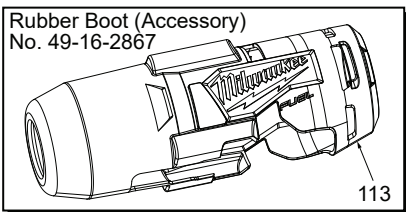
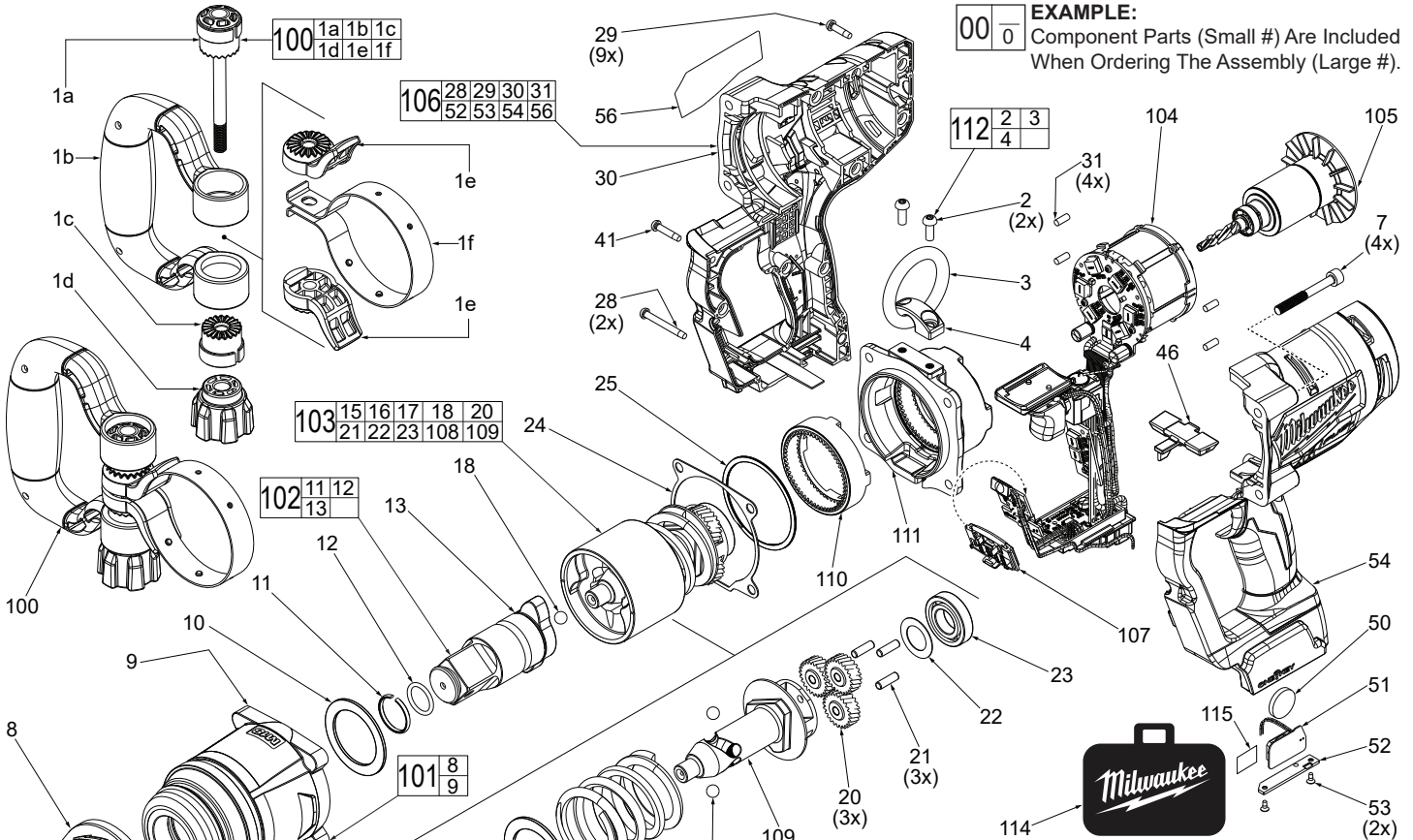
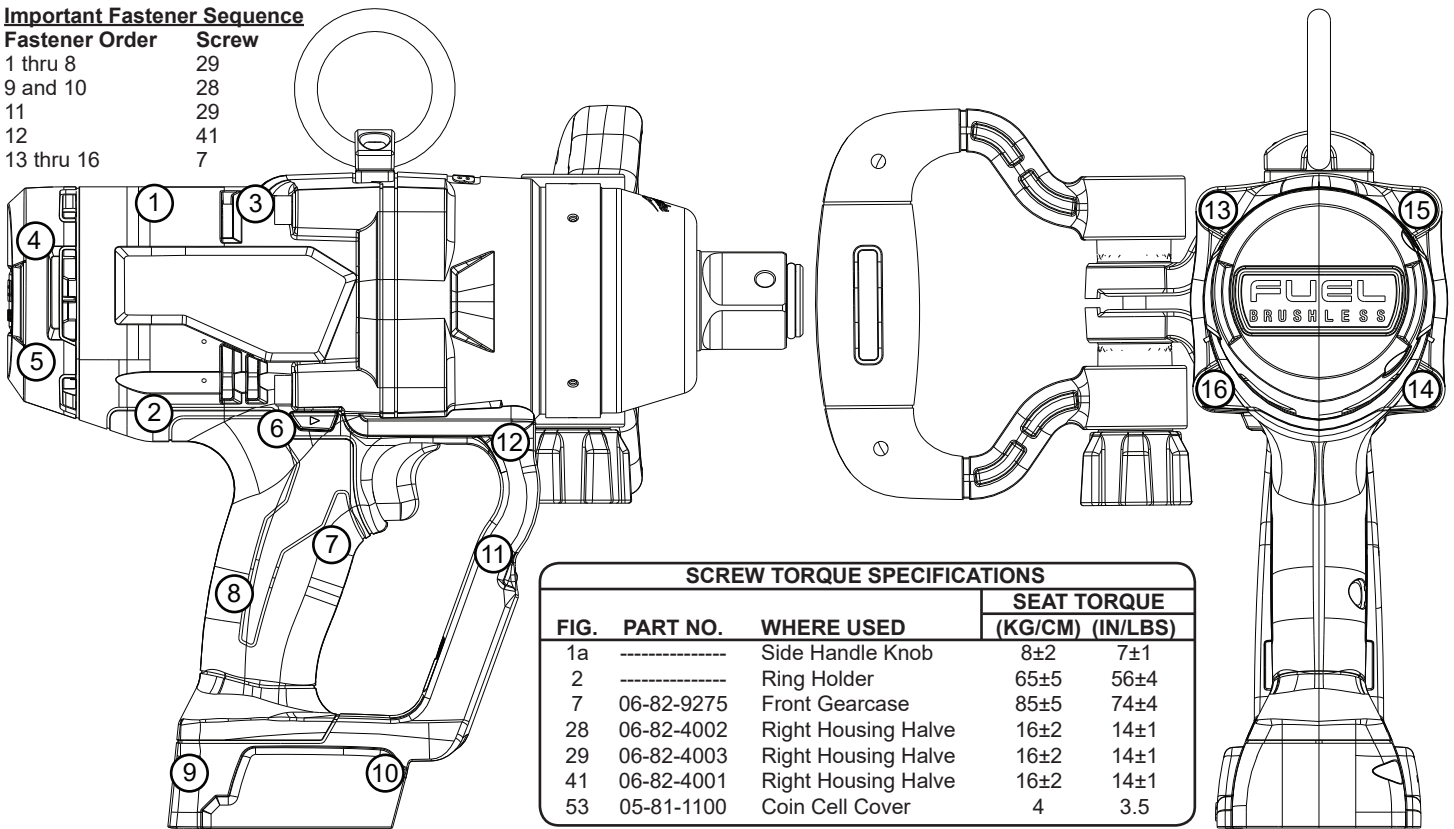


FIG.	PART NO.	DESCRIPTION OF PART	NO. REQ.
1a	-----	Top Handle Top Cap with Insert Bolt	(1)
1b	43-62-2867	Side Handle Grip	(1)
1c	-----	Side Handle Jaw	(1)
1d	-----	Side Handle Knob with Insert Nut	(1)
1e	-----	Side Handle Clamp	(2)
1f	-----	Side Handle Band	(1)
2	-----	M5 x 13mm Pan Hd. T-25 Mach. Screw	(2)
3	-----	Ring	(1)
4	-----	Ring Holder	(1)
7	06-82-9275	M6 x 50mm Cap Hd. Hex Recess Scr.	(4)
8	42-38-9001	Gearcase Boot	(1)
9	-----	Front Gearcase	(1)
10	45-88-1001	Washer	(1)
11	44-90-9001	Hog Ring	(1)
12	34-40-2867	O-Ring	(1)
13	-----	1" Square Drive Anvil	(1)
15	02-02-2050	Steel Ball	(31)
16	45-88-5116	Washer	(1)
17	40-50-4052	Spring	(1)
18	02-02-3003	Steel Ball	(3)
20	32-62-0700	Planet Gear	(3)

FIG.	PART NO.	DESCRIPTION OF PART	NO. REQ.
21	44-60-1960	Planet Gear Pin	(3)
22	45-88-2020	Washer	(1)
23	02-04-0032	Ball Bearing	(1)
24	43-44-8002	Gasket	(1)
25	34-60-5002	Retaining Ring	(1)
28	06-82-4002	M4 x 35mm Pan Hd. ST T-20 Screw	(2)
29	06-82-4003	M4 x 16mm Pan Hd. ST T-20 Screw	(9)
30	-----	Right Housing Halve - Cover	(1)
31	45-30-0255	Rubber Cushion	(4)
41	06-82-4001	M4 x 22mm Pan Hd. ST T-20 Screw	(1)
46	45-24-8001	Forward / Reverse Shuttle	(1)
50	50-11-0020	3V Coin Cell Battery (CR 2032)	(1)
51	22-09-0015	Coin Cell PCBA	(1)
52	31-15-0011	Coin Cell Cover	(1)
53	05-81-1100	M2.6 x 6mm ST Phillips Screw	(2)
54	-----	Housing Halve Left - Support	(1)
56	12-20-0130	Service Nameplate	(1)
100	14-34-6004	Side Handle Assembly	(1)
101	14-30-2867	Front Gearcase Assembly	(1)
102	42-06-2867	1" Square Drive Anvil Assembly	(1)
103	14-30-2008	Hammer/Camshaft Assembly	(1)
104	14-20-2867	Electronics Assembly	(1)
105	16-01-2867	Rotor Assembly	(1)
106	31-44-2004	Housing Assembly	(1)
107	45-24-2867	Mode Selector Assembly	(1)
108	43-81-2867	1" Hammer	(1)
109	36-10-0002	Camshaft	(1)
110	32-65-0375	Ring Gear	(1)
111	44-66-2867	Rear Gearcase	(1)
112	14-46-2867	Ring Holder Assembly	(1)
113	49-16-2867	Rubber Boot	(1)
114	48-55-3560	Contractors Bag	(1)
115	44-52-0006	Foam Pad	(1)

Important Fastener Sequence

Fastener Order	Screw
1 thru 8	29
9 and 10	28
11	29
12	41
13 thru 16	7

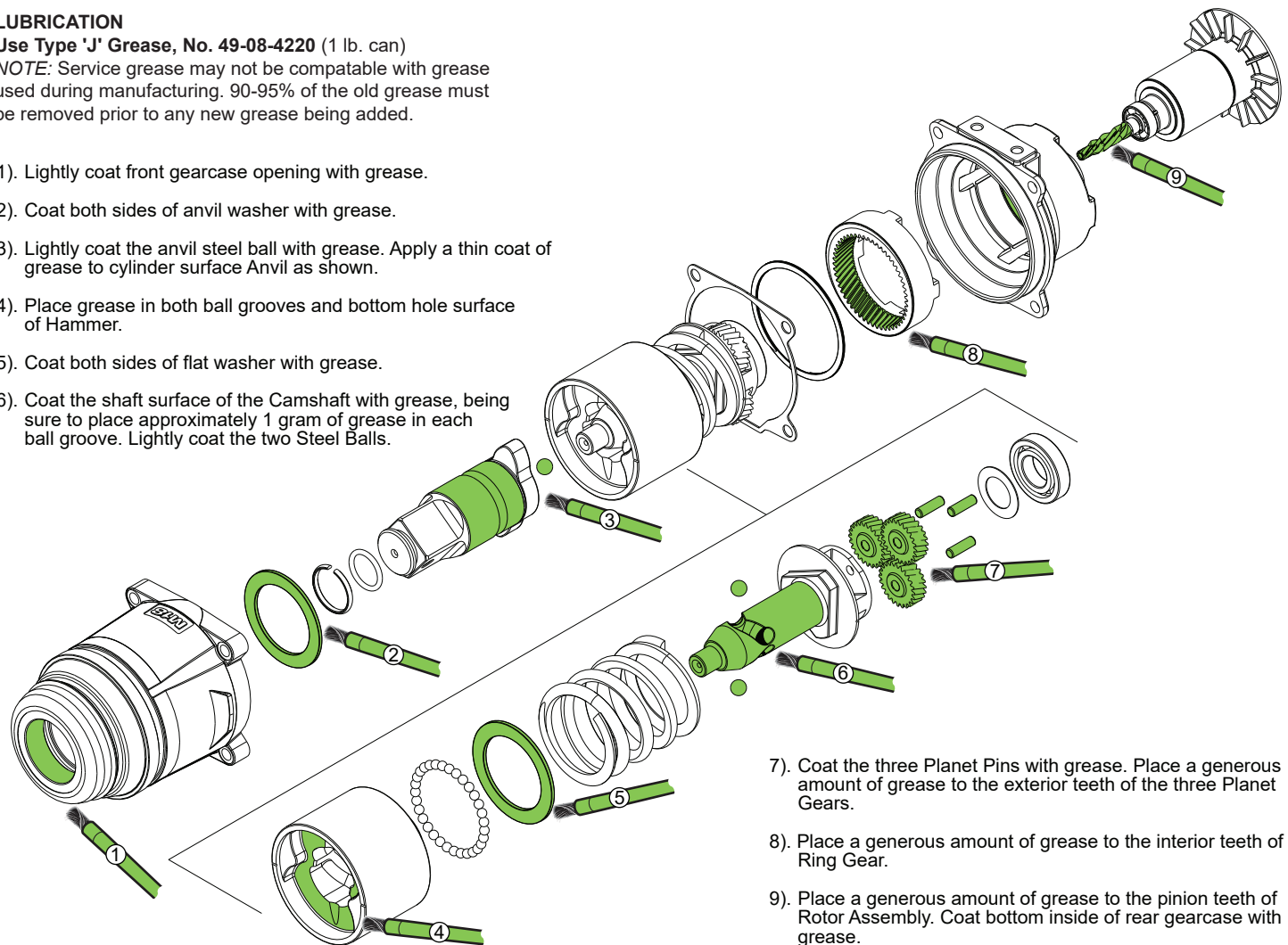


LUBRICATION

Use Type 'J' Grease, No. 49-08-4220 (1 lb. can)

NOTE: Service grease may not be compatible with grease used during manufacturing. 90-95% of the old grease must be removed prior to any new grease being added.

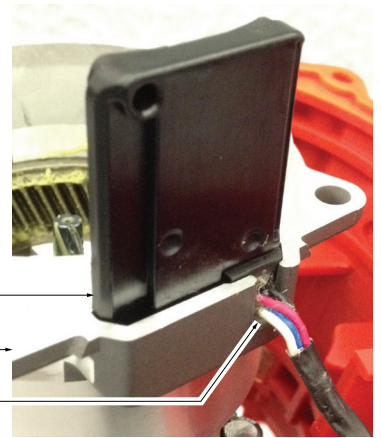
- 1). Lightly coat front gearcase opening with grease.
- 2). Coat both sides of anvil washer with grease.
- 3). Lightly coat the anvil steel ball with grease. Apply a thin coat of grease to cylinder surface Anvil as shown.
- 4). Place grease in both ball grooves and bottom hole surface of Hammer.
- 5). Coat both sides of flat washer with grease.
- 6). Coat the shaft surface of the Camshaft with grease, being sure to place approximately 1 gram of grease in each ball groove. Lightly coat the two Steel Balls.



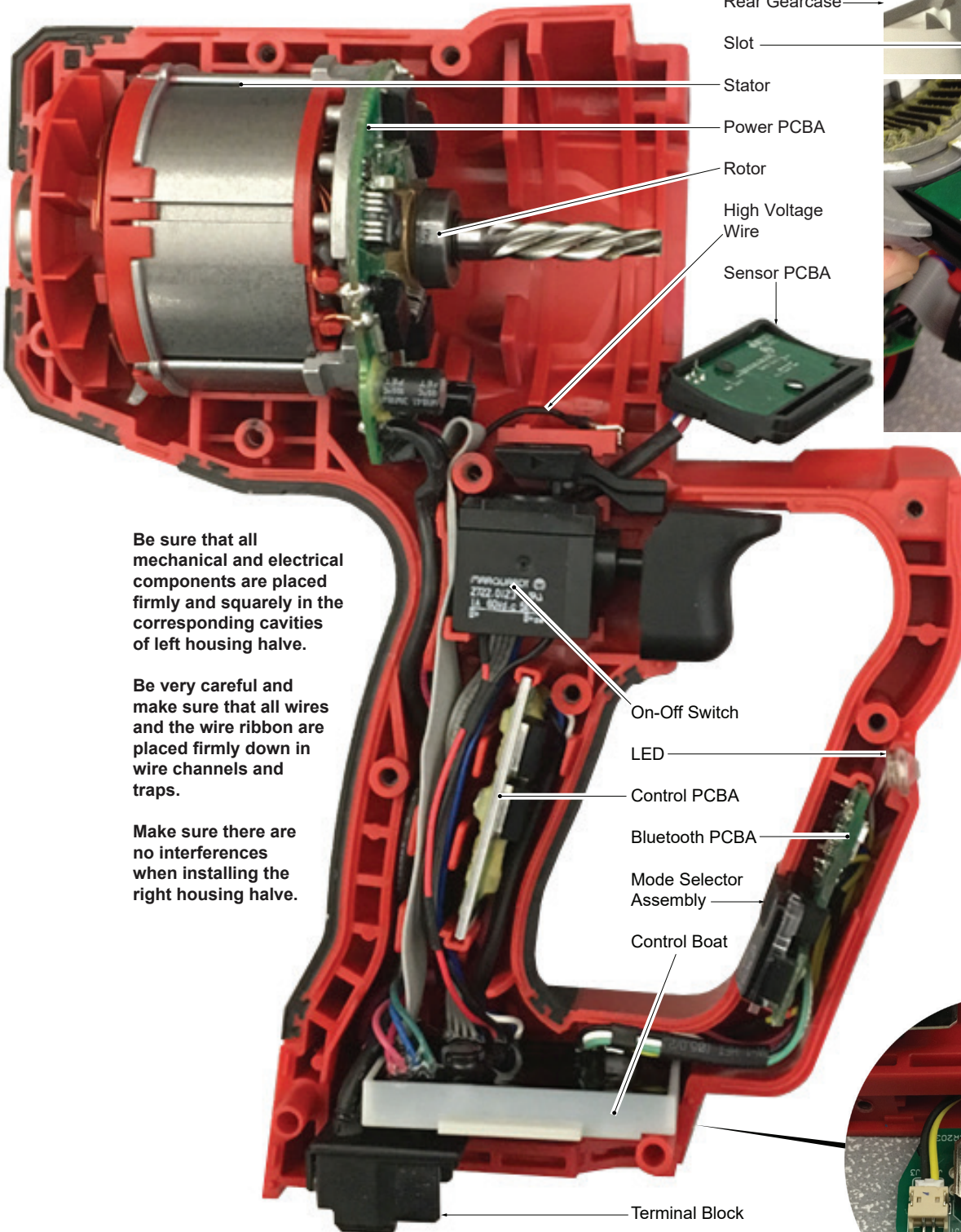
WIRING

Prior to installing the electronics assembly in left housing half, Sensor PCBA must be installed in bottom cavity of front and rear gearcase assemblies. Orient PCBA so wires can be inserted through slot in the bottom of rear gearcase as shown.

With PCBA squarely and firmly seated, place gasket onto rear gear case. Install gear/hammer/anvil mechanisms in front gearcase assembly. Carefully place those assemblies into and onto the rear gearcase, trapping the PCBA inside.



- Sensor PCBA
- Rear Gearcase
- Slot
- Stator
- Power PCBA
- Rotor
- High Voltage Wire
- Sensor PCBA



Be sure that all mechanical and electrical components are placed firmly and squarely in the corresponding cavities of left housing half.

Be very careful and make sure that all wires and the wire ribbon are placed firmly down in wire channels and traps.

Make sure there are no interferences when installing the right housing half.

- On-Off Switch
- LED
- Control PCBA
- Bluetooth PCBA
- Mode Selector Assembly
- Control Boat
- Terminal Block
- Coin Cell PCBA Assembly with Coin Cell Battery

