



SERVICE PARTS LIST

BULLETIN NO.
54-26-2870

SPECIFY CATALOG NO. AND SERIAL NO. WHEN ORDERING PARTS		REVISED BULLETIN
M18™ Brushless 1/4" Hex Impact Driver (1 Speed)		
CATALOG NO.	2850-20	STARTING SERIAL NO.
		J55A

EXAMPLE:
 00 0 Component Parts (Small #)
 Are Included When Ordering
 The Assembly (Large #).

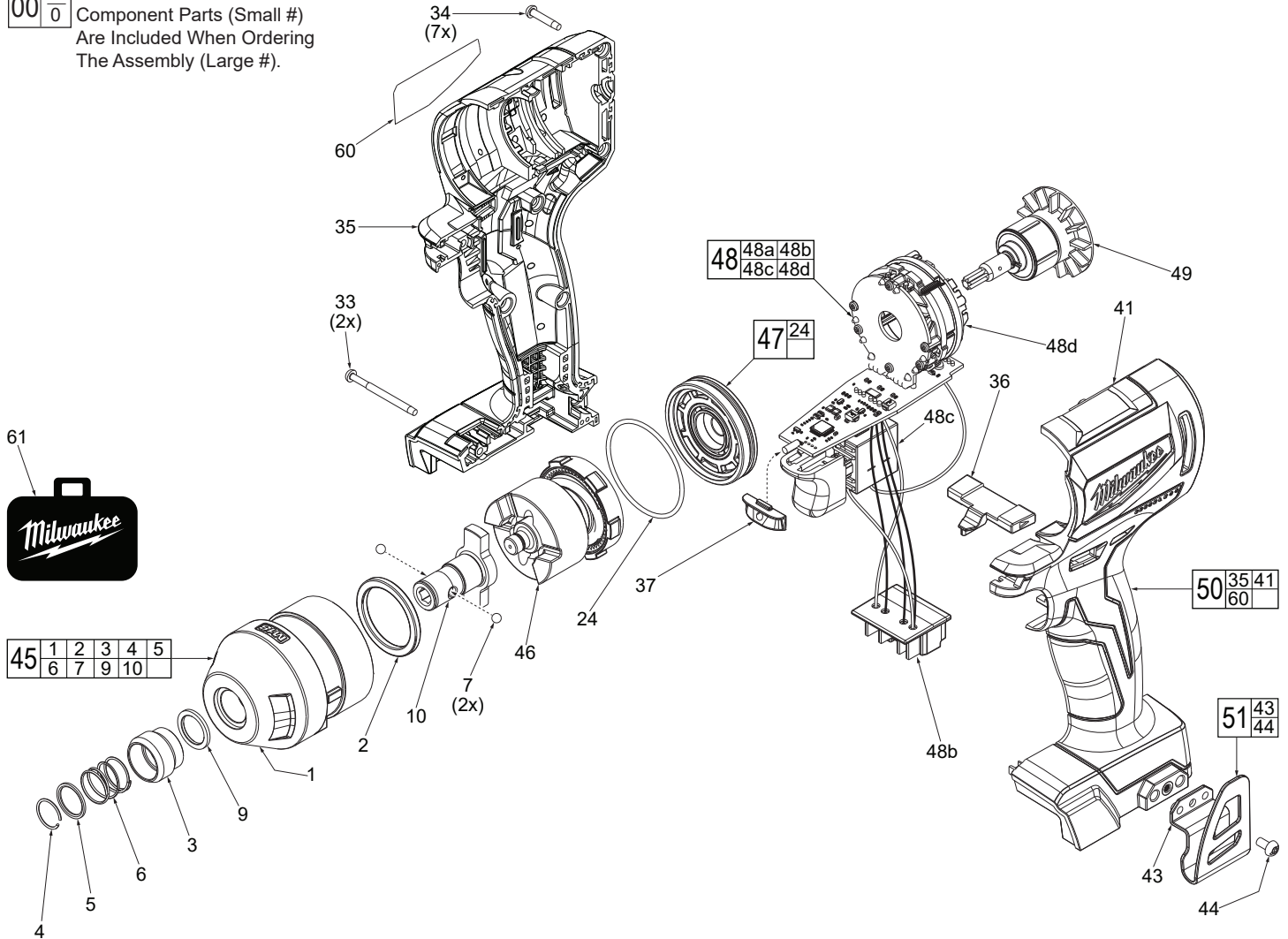


FIG.	PART NO.	DESCRIPTION OF PART	NO. REQ.
1	-----	Front Gear Case	(1)
2	45-88-2653	Front Gear Case Washer	(1)
3	42-76-0019	Sleeve	(1)
4	34-60-0005	Retaining Ring	(1)
5	45-88-2026	Washer	(1)
6	40-50-0056	Spring	(1)
7	02-02-1100	Steel Ball	(2)
9	45-88-1547	Washer	(1)
10	42-06-2805	Anvil	(1)
24	34-40-0595	O-Ring	(1)
33	06-82-2367	M3 x 38mm Pan Hd. ST T-10 Screw	(2)
34	006-82-6351	M3 x 16mm Pan Hd. ST T-10 Screw	(7)
35	-----	Right Handle Halve - Cover	(1)
36	45-24-0260	Shuttle	(1)
37	23-28-0400	LED Lens	(1)
41	-----	Left Handle Halve - Support	(1)
43	-----	Belt Clip	(1)
44	06-82-2500	6-32 x 5/16 Slit. Pan Hd. T-15 Mach. Sc.	(1)
45	14-30-2807	Gearcase/Anvil Assembly	(1)
46	14-30-2805	Gear Box Impacting Assembly	(1)
47	44-66-2680	End Cap Assembly	(1)
48	14-20-2815	Electronics Assembly	(1)
48b	-----	Battery Terminal Connector Block	(1)
48c	-----	On-Off Switch	(1)
48d	-----	Stator/Main PCBA	(1)
49	16-01-2830	Rotor Assembly	(1)
50	31-44-2862	Handle Housing Kit	(1)
51	42-70-0950	Belt Clip Kit	(1)
60	12-20-4107	Service Nameplate	(1)
61	42-55-4002	Carrying Case, Standard Equipment	(1)

FIG.	PART NO.	DESCRIPTION OF PART	NO. REQ.
62	10-20-4107	Warning Label (Not Shown)	(1)

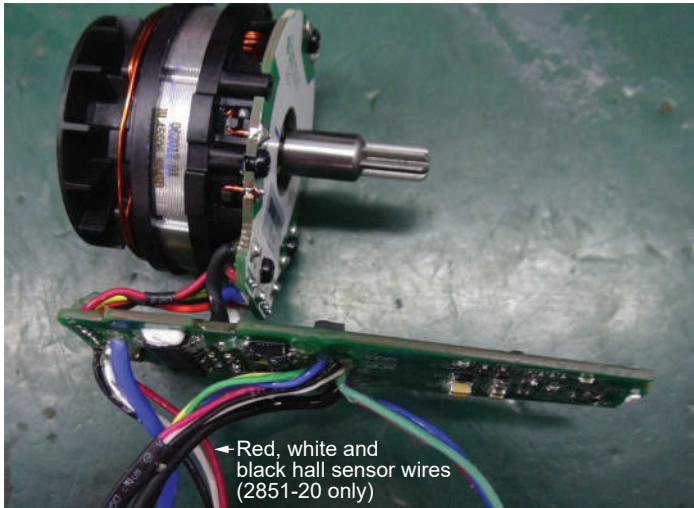
FIG. LUBRICATION

Use Type 'J' Grease, No. 49-08-4220 (1 lb. can)

Service grease may not be compatible with grease used during manufacturing. 90-95% of the old grease must be removed prior to any new grease being added.

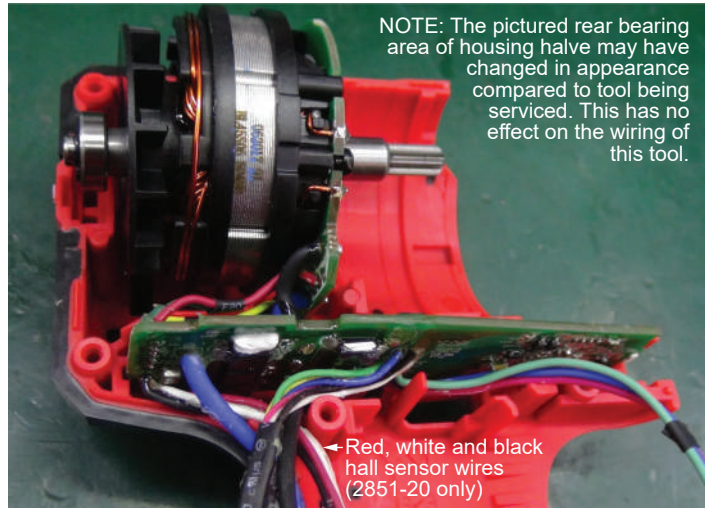
- 10 Lightly coat front washer surface of anvil with grease, place a dab in the ball cavities of anvil.
- 45 Coat inside of bushing inside front gearcase with grease.
- 46 **NOTE:** Do not wash impact assembly. Use a clean, dry cloth to wipe away any excess grease or contamination.
- 46 Lightly coat the I.D. of the ring gear and the center of the planet gears of impacting assembly with grease.
- 49 Coat pinion of rotor assembly with grease.

WIRING INSTRUCTIONS- one of two



← Red, white and black hall sensor wires (2851-20 only)

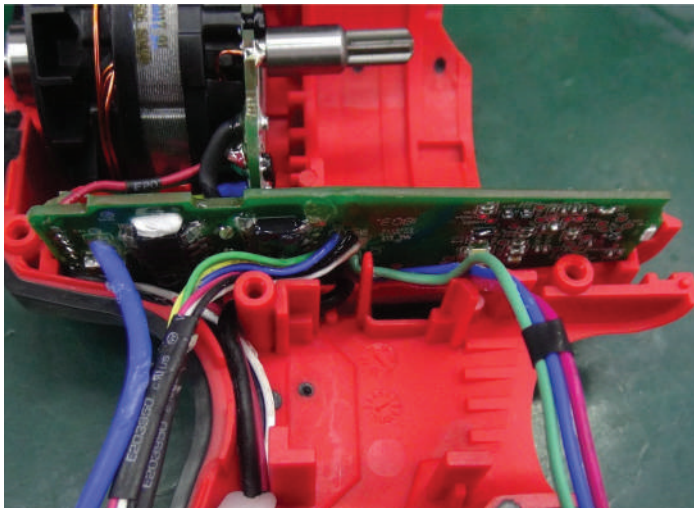
STEP 1: Carefully insert rotor into stator. Arrange wires as shown above. Note the red, white and black wires to the back of PCBA are connected to the hall sensor, model 2851-20 only. 2850-20 won't have the hall sensor.



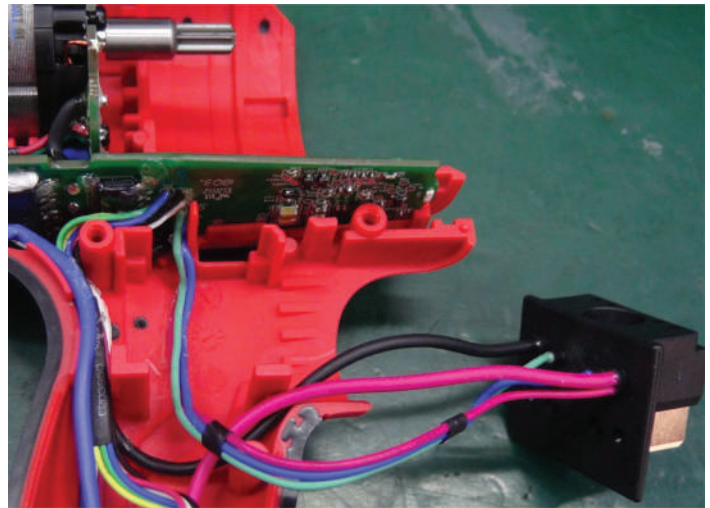
NOTE: The pictured rear bearing area of housing half may have changed in appearance compared to tool being serviced. This has no effect on the wiring of this tool.

← Red, white and black hall sensor wires (2851-20 only)

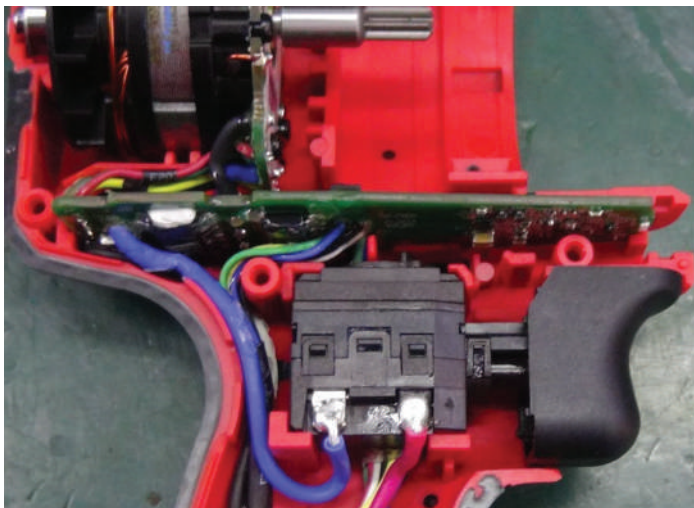
STEP 2: Place rotor/stator and PCBA firmly and squarely in cavities of left housing half. Arrange wires as shown above.



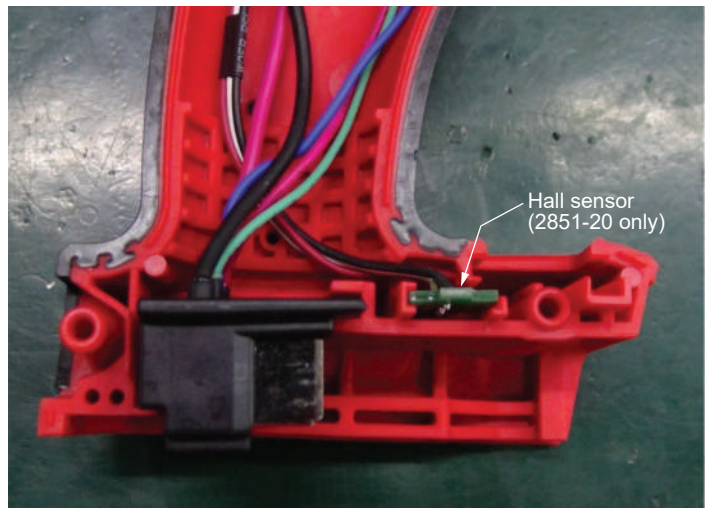
STEP 3: Separate and organize wires as shown above. For the 2851-20, place three hall sensor wires in bottom of housing half behind on-off switch cavity. Place black battery terminal wire over those three wires.



STEP 4: Route remaining wires as shown, over the wires from step 3 behind the switch cavity and through the bottom of switch cavity prior to installing on-off switch.



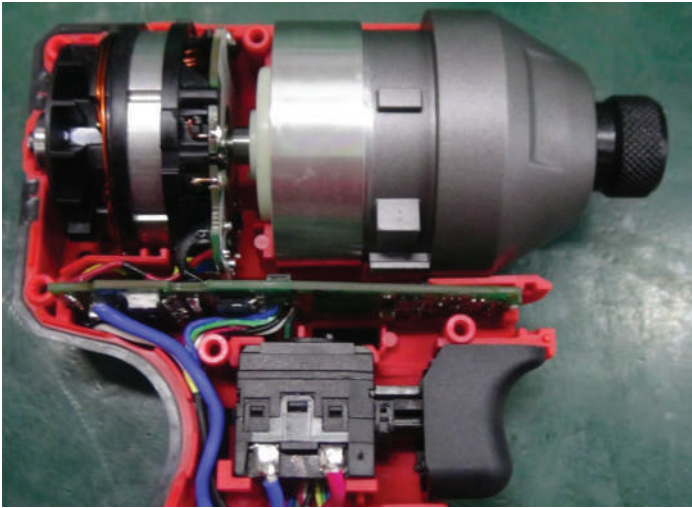
STEP 5: Place on-off switch firmly and squarely in cavity of left housing half. Be sure all previously placed wires are still captured in properly in wire traps and channels.



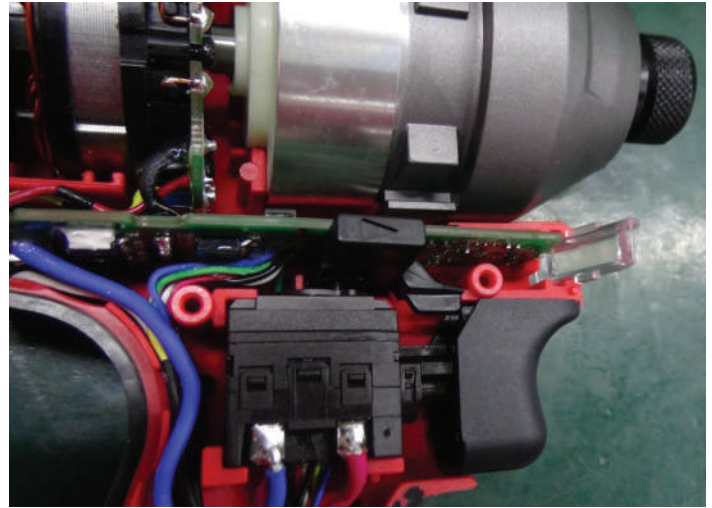
Hall sensor (2851-20 only)

STEP 6: Place battery terminal block and hall sensor firmly and squarely in cavity of left housing half. Be sure to capture hall sensor wires in trap as shown, model 2851-20 only.

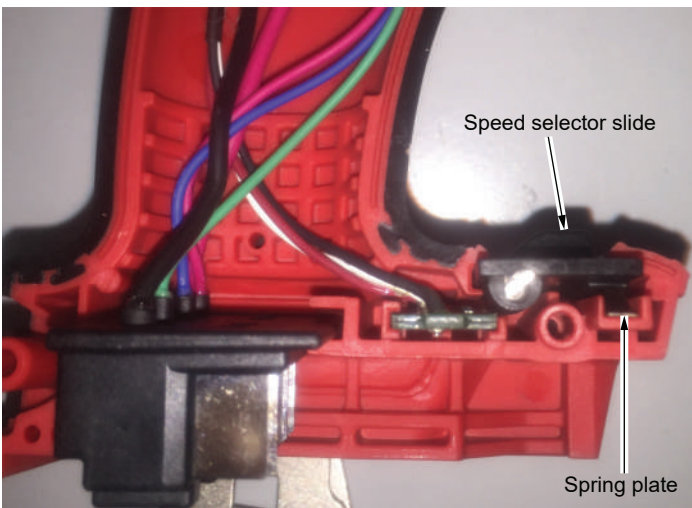
WIRING INSTRUCTIONS- two of two



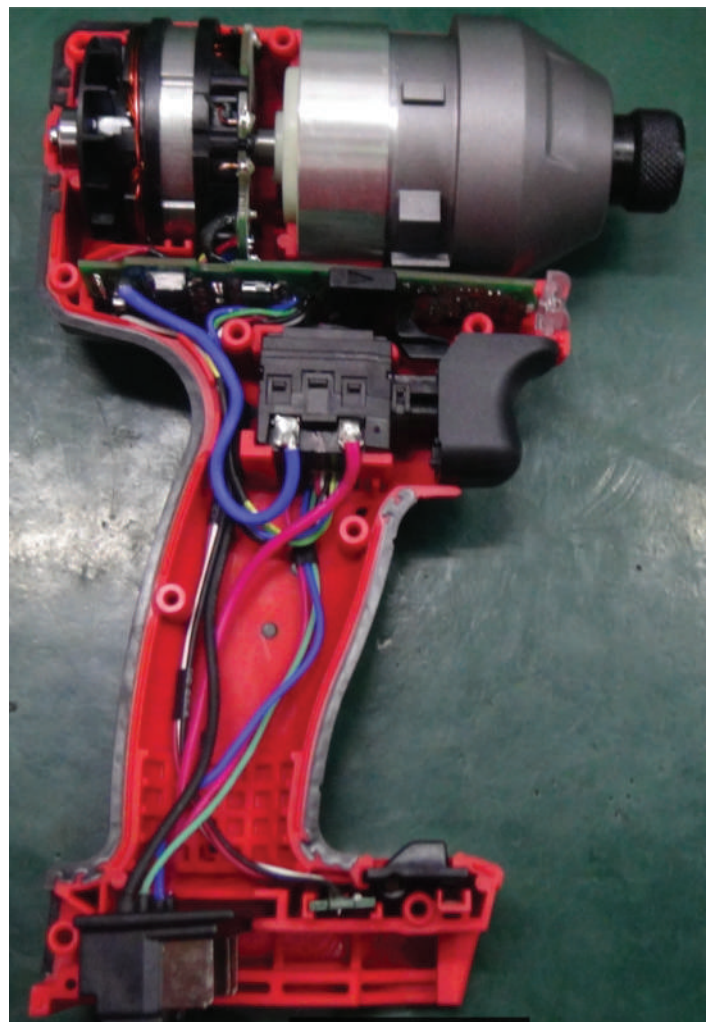
STEP 7: Assemble gear box/impact assembly onto rotor pinion. Be sure gear box, rotor and stator are firmly and squarely seated in left housing half and that the rotor fan has movement.



STEP 8: Install shuttle onto on-off switch being sure that top switch tab is captured in the bottom cavity of shuttle. Check for proper shuttle and switch functionality. Install LED lens into housing half recess.



STEP 9: Install spring plate and speed selector slide into left housing half.



STEP 10: Check that all elements of electronics assembly are seated properly and that all wires are pressed completely down in wire traps and channels.

Carefully install right housing half-cover onto left housing half-support. Watch for pinched wires. Secure with nine housing half screws.

Check functionality of shuttle and on-off switch (and speed selector slide on the 2851-20) before installing battery.